

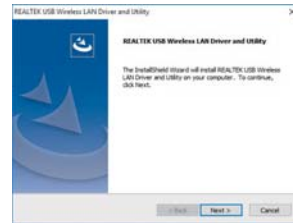
Quick Installation

Wireless USB Adapter

V1.0

1

1.2 Click "Next" to process the installation.

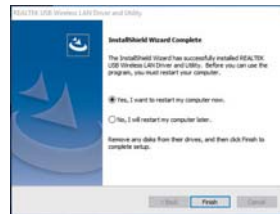


1.3 Installing the driver.

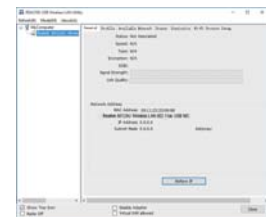


3

1.4 Click "Finish" to complete the installation.



1.5 Click the wireless utility.

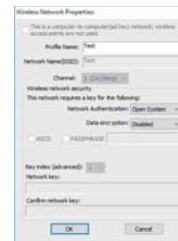


4

1.6 Click "Available Network" menu to search for the nearby wireless access points.

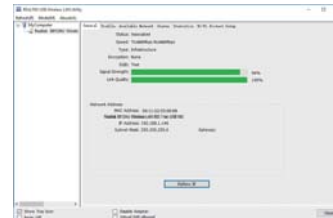


1.7 Input the network key if the wireless access point requires. Then Click "OK".



5

1.8 The wireless connection now is established.



Chater2: FQA

2.1 What are the factors that impact web speed?

Internet speed varies depending on the speed of the connection, hardware supporting the connection, computer condition and network demands. Strains on the network or hardware, such as heavy use or outdated parts, slows down the speed of surfing the web. Even on a secured network, connecting with multiple devices, such as smartphones, computers and gaming networks, can slow down the connection. High traffic on the Internet provider's system or on specific websites can also reduce Internet speed.

6

2.2 The connection is unstable and the speed is slow

If the signal is unstable, please kindly check if there are obstacles between the adapter and router. For dual band wifi adapter, we would suggest establishing your wireless connection on the less interference 5G bands, because there are too many wireless devices work on 2.4GHz bands. If you use this adapter on a desktop, we would suggest you plug it in the front port of your computer (Better in the direction of the router to gain signal strength).

2.3 Can this adapter create wifi network?

In AP mode it will create wifi signal, but the condition is your PC need to connect the network by Cable.

Chater3: Maintenance

3.1 Please keep the product away from water and humid environment to guarantee its normal performance.

3.2 Protect it against hazardous substances(such as acids, alkalis, etc.)

3.3 Please don't directly expose the adapter to the sunlight or excessive heat.

7

Chater1: Driver Installation

Note:

1. A dual band wireless ac router is required if you want to establish high speed 5G connection.

2. While the range of 5GHz is typically less than 2.4GHz, but the 5GHz band is significantly less congested and faster. So if your dongle is near with your router, you will get stronger signal with lighting speed on 5GHz band. But if the distance between the dongle and router is too long, you may have better signal on 2.4GHz band.

Software installation is basically same for Windows/Linux/Mac OS. In the following we will take installation in Windows XP as an example. Please install the driver first before plugging the adapter into your PC.

1.1 Put the mini CD on the CD room, then the auto installation window will pop up. Click Windows, the driver will run automatically. Double click "Setup.exe" in the software CD and manually install the driver when auto-run doesn't run.



2

Warranty Card

Customer Name		Telephone	
Address		E-mail	
Model No.		Date of Purchase	



8

MADE IN CHINA

Warning:

This device complies with Part 15 of the FCC Rules. Operation is subject to the following two conditions: (1) this device may not cause harmful interference, and (2) this device must accept any interference received, including interference that may cause undesired operation.

changes or modifications not expressly approved by the party responsible for compliance could void the user's authority to operate the equipment.

NOTE: This equipment has been tested and found to comply with the limits for a Class B digital device, pursuant to Part 15 of the FCC Rules. These limits are designed to provide reasonable protection against harmful interference in a residential installation. This equipment generates, uses and can radiate radio frequency energy and, if not installed and used in accordance with the instructions, may cause harmful interference to radio communications. However, there is no guarantee that interference will not occur in a particular installation. If this equipment does cause harmful interference to radio or television reception, which can be determined by turning the equipment off and on, the user is encouraged to try to correct the interference by one or more of the following measures:

- Reorient or relocate the receiving antenna.
 - Increase the separation between the equipment and receiver.
 - Connect the equipment into an outlet on a circuit different from that to which the receiver is connected.
 - Consult the dealer or an experienced radio/TV technician for help.
- NOTE: This device and its antenna(s) must not be co-located or operation in conjunction with any other antenna or transmitter

RF Exposure Statement

To maintain compliance with FCC's RF Exposure guidelines, This equipment should be installed and operated with minimum distance of 5mm the radiator your body. This device and its antenna(s) must not be co-located or operation in conjunction with any other antenna or transmitter