



LINPA WORLD

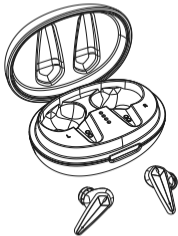
# User Manual

Bluetooth Wireless Earbuds TWS003

## Connection

---

Pair with Your Device :



**Bluetooth**<sup>®</sup>

**Linpa T03**<sup>®</sup>

---

Choose "TWS003"

Taking the earbuds from the charging case, the main unit light flashes white and red. The secondary lights off.

---

Connected

The LED light off

---

### Tips:

- The earbuds will turn off automatically if there is no connection within 5 minutes after power on.
- The earbuds will automatically turn off if there is no playback within 30 minutes after pairing.
- The earbuds will turn off automatically within 5 minutes when turn off the device Bluetooth after paring.



## Pairing issues

---

The left and right sides can be used separately.

When one side works, how do I switch my earbuds from single mode to stereo mode?

Step 1->: Put them back to the case.

Step 2->: Delete "TWS003" from Bluetooth menu on your device, if your device has been connected "TWS003" .

Step 3->: Taking the earbuds from the charging case, both earbuds turn on, the main LED flashes red and white, Double-click any earbud, the two earbuds will be forced to pair. After the two earbuds are successfully paired, the secondary light turns off and the main unit LED flashes red and white.

Step 4->: After the earbuds is successfully connected to the device, the left and right lights off.

Step 5->: If prompted, enter code "0000".

## Controls

### Music

Short press	Play/pause songs
Double click(Left)	Previous track
Double click(Right)	Next track

### Calling

Press	Answer/End Call
Long press 2 seconds	Reject the call
Long press 1 second	Reject third party calls
Double click	Connect a new call while retaining the current call
Three-party call	Double-click to switch between the second party and the third party, and there is a 'didi' prompt when switching calls.

## Activate Siri/Other Voice Control Software

Connected to your phone/device

Long press for 2 seconds  
and other voice assistants

---

## Turn On/Off

Take the earbuds from the charging case,  
it will automatically turn on. Or manually  
press 3s in the off state.

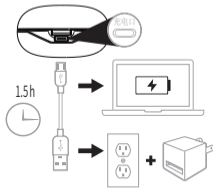
White lights flash 3 times

---

Long press 5 seconds




Red lights flash 3 times

## Charging



- ① Please check the power adaptor if it is 5V with good quality. [Please don't use 6v, 9v, or 12v chargers to avoid the risk of burning the chip]
- ② Clean the thimble and contacts with alcohol to ensure that the headphone charging contact is conductive.

### Earbud status indicator

	Red light flashes once every 1S	Low battery
	LED steady red	Charging
	LED light off	Fully charged



## FAQ

---

**Q: The sound quality of the headphones is not good?**

A: For all of the headphone products, they need a period of use to get better sound quality. Some components, such as diaphragm unit, transistors, integrated circuits, and capacitance, and can be stabilized after a period of use.

**Q: Why cannot synchronize the volume?**

A: Our products are mainly compatible with iPhone, Samsung, and other mainstream mobile phones, Due to too many Android systems, our headsets cannot match all types of Android systems. If the volume cannot synchronize, please manually adjust the volume on the phone or computer.

**Q: How to keep clear calls?**

A: When using with a phone call, please turn the volume to the maximum to avoid making calls in noisy environments, such as subways and buses. These places will affect the signal connection and stability of the earbuds.

**Q: How to deal with the stuck signal of the earphone?**

A: The Bluetooth headphones use the 2.4G frequency band. When it encounters wifi and the base station signal environment is complex, it will automatically switch to the most suitable frequency band. To avoid the frequency hopping, Please use your mobile phone as close as possible to the headphones.

## Attention

---

- Do not store the earphone in extreme temperature (under 0°C or over 45°C).
- Do not use this earphone during a thunderstorm to avoid irregular function and increased risk of electric shock.
- Do not use harsh chemicals or strong detergents to clean the earbuds.
- Keep the earbuds dry

### Maintenance:

Since our product has a built-in battery, and the battery itself has power consumption issues, please make sure to charge the headset and charging box once a week to prevent the protection board from protecting itself and causing the battery to run low.



## Specifications

---

Model: TWS003

Standby Time: One year

Talk/Playing Time: 30 hours (50% volume)

Bluetooth Standard: V5.0

Frequency Range: 2.402GHz-2.48GHz

Operating Range: 33 feet/10 meters (No obstacles)

Earphone Battery/Charging Case: 45mah/350mah

Charging Time (Earphones/Charging Case) : 1 hour/1.5 hours

FCC ID: 2AKZ8-TWS003

changes or modifications not expressly approved by the party responsible for compliance could void the user's authority to operate the equipment.

This equipment has been tested and found to comply with the limits for a Class B digital device, pursuant to Part 15 of the FCC Rules. These limits are designed to provide reasonable protection against harmful interference in a residential installation. This equipment generates, uses and can radiate radio frequency energy and, if not installed and used in accordance with the instructions, may cause harmful interference to radio communications. However, there is no guarantee that interference will not occur in a particular installation.

If this equipment does cause harmful interference to radio or television reception, which can be determined by turning the equipment off and on, the user is encouraged to try to correct the interference by one or more of the following measures:

- Reorient or relocate the receiving antenna.
- Increase the separation between the equipment and receiver.
- Connect the equipment into an outlet on a circuit different from that to which the receiver is connected.
- Consult the dealer or an experienced radio/TV technician for help.

This equipment complies with FCC radiation exposure limits set forth for an uncontrolled environment. This transmitter must not be co-located or operating in conjunction with any other antenna or transmitter.