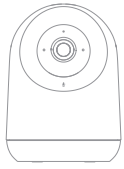


SwitchBot Pan/Tilt Cam 2K User Manual

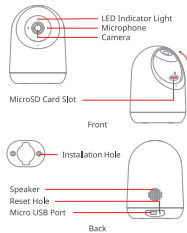


Please read this user manual carefully before using your device.

Package Contents



List of Components



Specifications

Product Name: SwitchBot Pan/Tilt Cam 2K
Model: W3101100
Power Input: 5 V= 2 A
Video Resolution: 2K
Image Compression: H.264
Field of View: 100° diagonal
Storage: Supports up to 256 GB microSD card, FAT32 format.
Operating Temperature: -15 °C to 45 °C (5 °F to 113 °F)
Operating Humidity: ≤95 % RH
Network Connectivity: 802.11b/g/n, 2.4 GHz

Instructions

Add Device to the SwitchBot App
Connect the device to a power supply. The light indicator on the camera will flash red when power is connected.



Download and install the SwitchBot app
Download the SwitchBot app on App Store or Google Play Store.



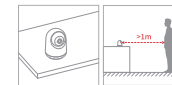
- Add the camera.
- Open our app, create a SwitchBot account or sign in directly if you already have one.
- Put the camera closer to the router and ensure that the camera is powered on.
- Tap "+" at the top right of the Home page, find the Pan/Tilt Cam 2K icon and select, then follow the instructions to add your camera.

Precautions

1. When letting your camera scan the QR code on your phone to access the internet, please make sure that your phone screen is brighter than the surrounding environment.
2. Make sure the anti-sub function of your Wi-Fi is turned off. Turning on this function may lead to a connection failure.
3. Please make sure your camera is connected to a 802.11b/g/n, 2.4GHz, IPv4 wireless network.

How to Install

① Put on a table



③ Install on a ceiling or wall

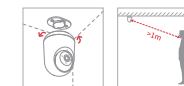
Attach the sticker to a ceiling/wall surface you want to install on.



Then install the base at the place of the sticker.



Attach the camera firmly on the base.

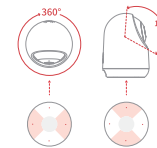


If you are installing the camera on a ceiling, go to Pan/Tilt Cam 2K > Settings > Basic Settings in the app and turn on the Flip Screen function.

Features

1. Pan-Tilt Control

Pan-Tilt Control consists of vertical and horizontal control. The vertical visual angle is 115° and horizontal visual angle is 360°. You may control its direction and view images from different angles remotely via the app.



2. Motion Detection

When Motion Detection is turned on, Pan/Tilt/ Cam 2K will take a photo and record a video (requires a memory card and Recording to be turned on) of any moving object detected and send you notifications (requires Allow Notifications to be turned on).

3. Motion Tracking

When Motion Tracking is turned on, Pan/Tilt/ Cam 2K will follow the objects as they move, and rotate horizontally or vertically to keep them in the middle of the screen. It will also take a photo and record a video of the event (requires a memory card and Recording to be turned on).

4. Third-Party Integration

Pan/Tilt/ Cam 2K can connect to Amazon Alexa and Google Assistant for voice control. After adding the device, please ensure your phone has a normal network connection. Go to Pan/Tilt/ Cam 2K - Settings -> Cloud Services in the app and link the third-party services to your SwitchBot account.



5. Night Vision

When Night Vision is turned on, Pan/Tilt/ Cam 2K will turn on infrared light and change the video to black and white. You can set this mode as Auto, so when the camera senses the surrounding is dark, Night Vision will auto turn on for you to see the dark scene more clearly.

6. Privacy Mode

When Privacy Mode is turned on, Pan/Tilt/ Cam 2K will enter hibernation and the camera lens will rotate to the inside. You will not be able to watch live videos via the app and features related to images like Motion Detection/Tracking will also be disabled.

Resetting Factory Settings

Find the reset hole, hold down the reset button at the bottom with the reset pin for around 5 seconds until you hear a prompt tone. Now your camera has been reset and is ready for network reconfiguration.



LED Indicator Light

Table with 3 columns: LED Indicator Light, Description, and Status. Rows include: Red (Stays lit up - Device starting), Red (Flashes rapidly (0.25 s/ flash) - Ready to configure Wi-Fi), Green (Flashes slowly (1.5 s/ flash) - Connecting to Wi-Fi router), Green (Flashes rapidly (0.25 s/ flash) - Connected to Wi-Fi router and now connecting to the internet), Green (Stays lit up - Device is online), Red (Flashes rapidly alternately (0.25 s/ flash) - Connected to Wi-Fi router but failed to connect to the internet), Green (Flashes slowly alternately (1.5 s/ flash) - Error in network connection).

Return & Refund Policy

This product has a three-year warranty which begins from date of purchase. Should the following situations occur, your warranty and/or your eligibility for a return or refund may not be valid. Warranty expires, Intended damage or abuse, Inappropriate storage (including dropping or soaking in water), Unauthorized modifying or repair of product, Natural wear of product, Natural disasters.

Contact & Support

Setup and Troubleshooting: support@switch-bot.com
Support Email: support@wandertechlabs.com
Feedback: If you have any concerns or problems when using our products, please send feedback via our app through the Profile -> Feedback page.

Safety Information

- This camera is for indoor use only. Keep the device away from water, fire, humid or hot environments. Unplug this device if there is lightning storms or when unused for a long period. Do not attempt to disassemble, repair, or modify the device. Do not use damaged charger or USB cable to charge the device. Do not use any other chargers apart from those recommended. Do not use in places where wireless devices are not allowed. Adapter shall be installed near the equipment and shall be easily accessible.

CE Warning

To comply with RF exposure requirements, a minimum separation distance of 20 cm must be maintained between the user's body and the device, including the antenna. Use only the supplied or an approved antenna. This device is in compliance with the essential requirements and other relevant provisions of directive 2014/53/EU. All essential radio test suites have been carried out. CE DECLARATION: Hereby, Woan Technology (Shenzhen) Co., Ltd. declares that the radio equipment type W3101100 is in compliance with Directive 2014/53/EU. The full text of the EU declaration of conformity is available at the following internet address: support@switch-bot.com. UKCA DECLARATION: Hereby, Woan Technology (Shenzhen) Co., Ltd. declares that the radio equipment type W3101100 is in compliance with UK Radio Equipment Regulations (SI 2017/7206). The full text of the UK declaration of conformity is available at the following internet address: support@switch-bot.com. This product can be used in EU member states and UK.

FCC Warning

This device complies with Part 15 of the FCC Rules. Operation is subject to the following two conditions: (1) This device may not cause harmful interference, including interference that may cause undesired operation. NOTE: This equipment has been tested and found to comply with the limits for a Class B digital device, pursuant to part 15 of the FCC Rules. These limits are designed to provide reasonable protection against harmful interference in a residential installation. This equipment generates uses and can radiate

radio frequency energy and, if not installed and used in accordance with the instructions, may cause harmful interference to radio communications. However, there is no guarantee that interference will not occur in a particular installation. If this equipment does cause harmful interference to radio or television reception, which can be determined by turning the equipment off and on, the user is encouraged to try to correct the interference by one or more of the following measures: Reorient or relocate the receiving antenna. Increase the separation between the equipment and receiver. Connect the equipment into an outlet on a circuit different from that to which the receiver is connected. Consult the dealer or an experienced radio/TV technician for help. NOTE: The manufacturer is not responsible for any radio or TV interference caused by unauthorized modifications to this equipment. Such modifications could void the user's authority to operate the equipment. FCC Radiation Exposure Statement This equipment complies with FCC radiation exposure limits set forth for an uncontrolled environment. This equipment should be installed and operated with minimum distance 20 cm between the radiator and your body.

KCC Warning

반송파차폐 선언: Woan Technology (Shenzhen) Co., Ltd.
제품명/모델명: SwitchBot Pan/Tilt Cam 2K/W3101100
제조자/총판: 우안디지탈테크놀로지(주) (우안디지탈) W3101100
제조자 및 제조국가: Woan Technology (Shenzhen) Co., Ltd / China
제조년월: 2022.07
인증번호: 1486804W093101100
이 문서는 보호성이 있으므로 통신보안에 위협되는 서빙의 통찰을 글자 그대로 공유 중

NCC Warning

取得無線證明之低功率射頻器材，非經核准，公司、商號或廠商不得私自修改其規格，或以不當或未經設計之特性及功能。
使用無線射頻器材之產品不得影響飛航安全及干擾合法通信；若發現干擾現象時，應立即停用，並改善至無干擾行為方准繼續使用。前述合法通信，指依電信管理法規定作業之無線電通信。
無線電射頻器材須符合技術法規及工業、科學及醫療用電磁輻射性安全規範之標準。