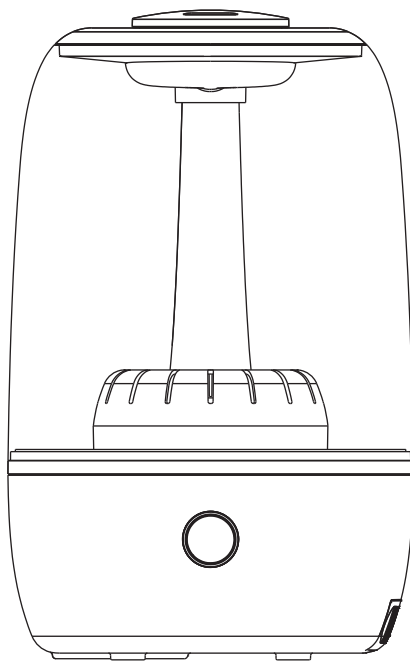
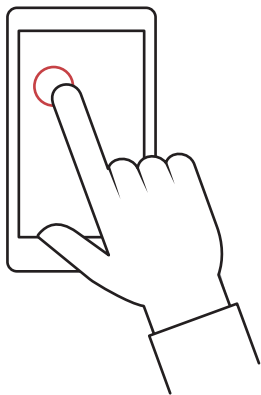


www.switch-bot.com

If you have any questions regarding the use of this humidifier, please check our FAQ page first: <https://www.switch-bot.com/helparticles>.
For further assistance, kindly submit feedback in the SwitchBot App (preferred) or contact us via email: support@wondertechlabs.com.

SwitchBot Smart Humidifier

User Manual



SAFETY INSTRUCTIONS

Warning

This product is compliant with all relevant electromagnetic field standards and is, when handled as described in the User Manual, safe to use. Therefore, always read the instructions in this User's Guide carefully before using the device, and save it for later use.

- The humidifier is intended for indoor use only. Do not operate the humidifier outdoors.
- Always ensure that there is water in the water tank before operating the humidifier.
- Use only clean, cool water to fill the water tank.
- Place the humidifier on a smooth, level, waterproof surface that is elevated off the ground.
- Do not install the humidifier near children, walls, furniture or electrical appliances.
- Always handle the humidifier with dry hands to avoid electric shock.
- Do not operate the humidifier with a damaged cord or plug.
- Unplug the humidifier when not in use.
- Do not cover the mist outlet on the humidifier or insert objects into the mist outlet.
- Never scrape transducer on your own.
- Do not leave the humidifier in a closed room as the air could become saturated and leave condensation on walls or furniture.
- Leave room door partially open when the humidifier is being operated.
- This product is not a toy. Do not allow children to play with it.
- Keep this User Manual for future reference.

Important Guidelines for Installing Humidifier

- Use of other 2.4 GHz products, such as other wireless networks, Bluetooth® systems or microwave ovens may cause interference with this product. Keep the humidifier away from these types of products, or turn them off if they appear to be causing interference.

SPECIFICATION

Name	Smart Humidifier
Model	W0801800
Power Input	100-240V~50/60Hz
Tank Capacity	3.5L
Mist Rate	$\geq 200\text{mL/h}$
Total Power	24W
Size	180×180×295mm

LIMITED WARRANTY

This product is warranted to be free from manufacturing defects under normal use and conditions for 1 year. The warranty will be invalid if the unit is damaged by accident, improper repair or failure to follow safety instructions provided with the product. This warranty does not apply to normal wear and tear or commercial use.

You can't transfer the warranty to subsequent owners of the product. Liability under this warranty is limited to repair or replacement. In no event shall liability exceed the purchase price paid by the purchaser of the product.

Under no circumstances shall there be liability for any loss - direct, indirect or incidental - or consequential damage arising out of, or in connection with the use of this product.

For the most up-to-date warranty information and instruction, please visit our website.
www.switch-bot.com

FCC WARNING

This device complies with part 15 of the FCC Rules. Operation is subject to the following two conditions: (1) This device may not cause harmful interference, and (2) this device must accept any interference received, including interference that may cause undesired operation. Any Changes or modifications not expressly approved by the party responsible for compliance could void the user's authority to operate the equipment. This equipment has been tested and found to comply with the limits for a Class B digital device, pursuant to part 15 of the FCC Rules. These limits are designed to provide reasonable protection against harmful interference in a residential installation. This equipment generates uses and can radiate radio frequency energy and, if not installed and used in accordance with the instructions, may cause harmful interference to radio communications. However, there is no guarantee that interference will not occur in a particular installation. If this equipment does cause harmful interference to radio or television reception, which can be determined by turning the equipment off and on, the user is encouraged to try to correct the interference by one or more of the following measures:

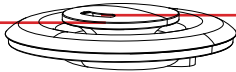
- Reorient or relocate the receiving antenna.
- Increase the separation between the equipment and receiver.
- Connect the equipment into an outlet on a circuit different from that to which the receiver is connected.
- Consult the dealer or an experienced radio/TV technician for help. The device has been evaluated to meet general RF exposure requirement. The device can be used in portable exposure condition without restriction.

FCC RF exposure statement:

The equipment complies with FCC Radiation exposure limit set forth for uncontrolled environment. This equipment should be installed and operated with minimum distance 20cm between the radiator and your body.

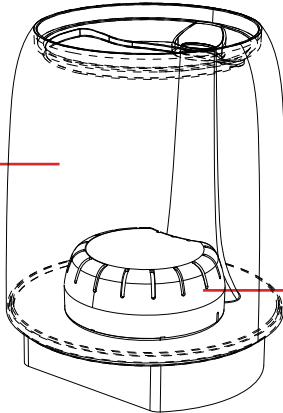
PARTS

Tank Lid



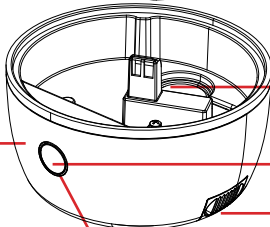
Mist Outlet

Tank



Humidification Filter

Base

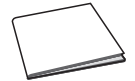


Transducer

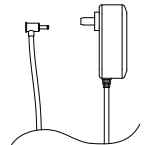
Touch Button

Essential Oil Tray

Indicator Light



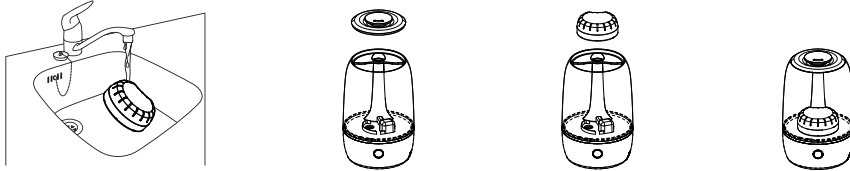
User Manual



Power Adapter

OPERATION AND USE

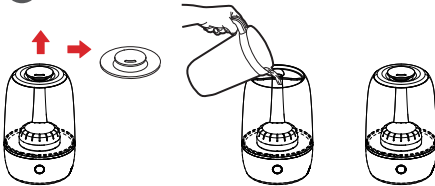
1. Rinse the humidification filter under a slowly running tap for half a minute. Then assemble the filter round the filter support on the tank bottom.



2. Refill water

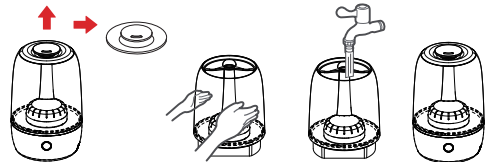
There are two ways to refill water, just go with your preferred one.

1



- (1) Remove the tank lid.
- (2) Fill the water tank with cold tap water directly until the water reaches the maximum water indication level. You can observe the water level through the transparent water tank.
- (3) Place the tank lid back onto the tank.

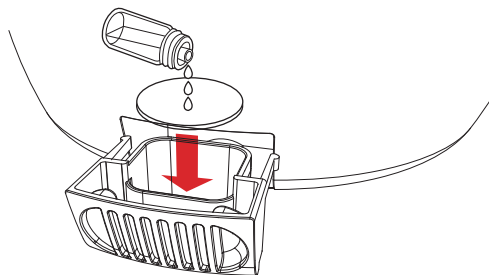
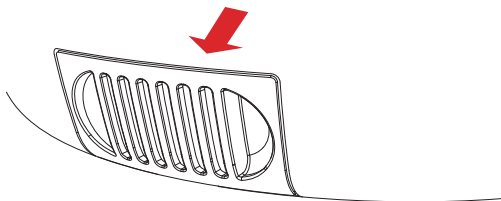
2



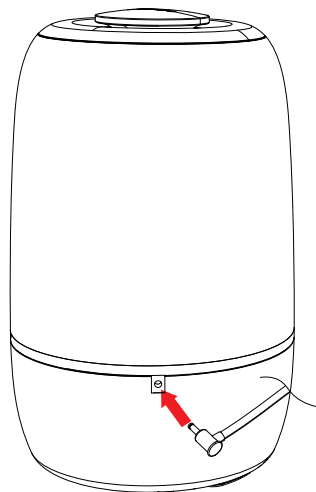
- (1) Remove the tank lid.
- (2) Take out the water tank by holding it at both sides.
- (3) You can observe the water level through the transparent water tank. Fill the water tank with cold tap water until the water reaches the maximum water indication level.
- (4) Place the tank and tank lid back onto the base.

Optional: Add a few drops of your favorite essential oil to the pad in the tray. (Oil not included)

Warning: DO NOT add oils or other additives directly into the water tank. Add only to the pad in the tray. Oils added to the tank will damage the tank and the whole unit. Any use of such additives in the tank will void the manufacture's warranty.

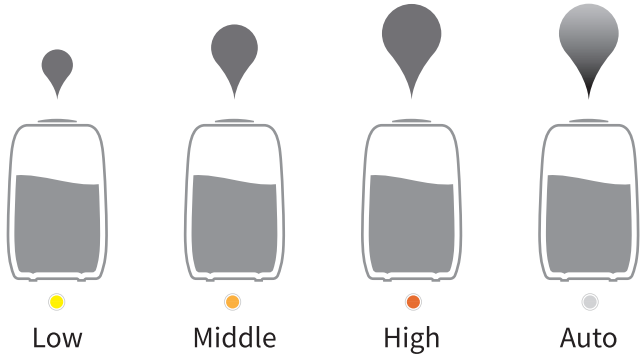
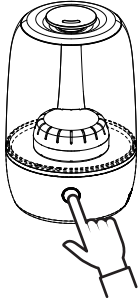


3. Insert the DC connector to the base then plug in the power adapter. The humidifier is powered on after a beep.



Manually Control

Press the touch button to set to your desired mode.



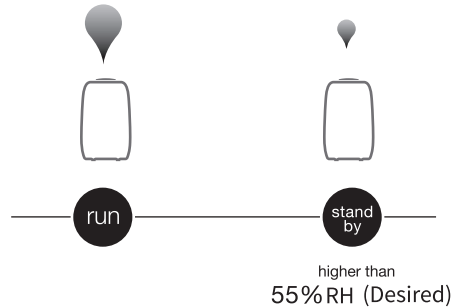
Do not operate the humidifier without water in the water tank.



Out of water

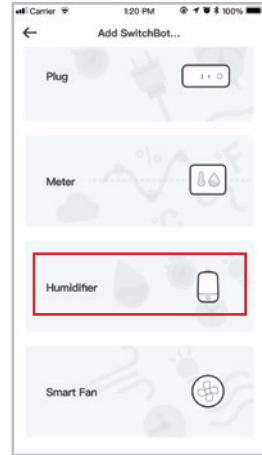
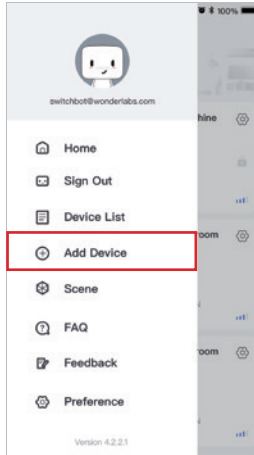
How AUTO Mode Works

If no mist is being emitted on auto mode, it means the humidity in the room is already balanced between 40-55% RH.



Smartphone Control

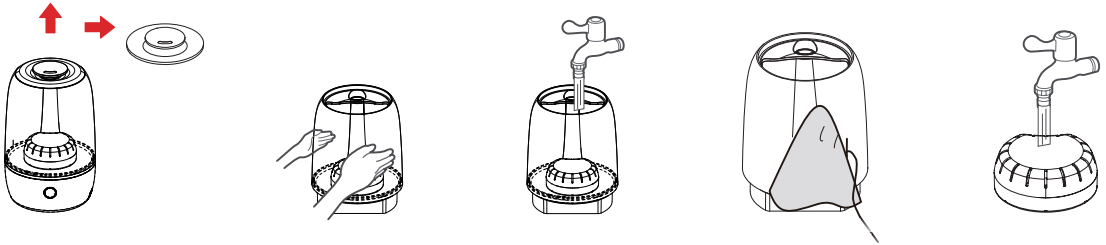
Launch the SwitchBot App downloaded from your app store. Add the Humidifier from the left side menu, and follow the app instructions.



Clean the Water Tank

Clean the water tank every week to keep it hygienic.

1. Remove the tank lid, take out the water tank and the filter.
2. Fill the water tank for 1/3 with water.
3. Add some mild washing-up liquid to the water in the water tank.
4. Clean the inside of the water tank with a soft clean cloth.
5. Empty the water tank into a sink.



Clean the Base of the Humidifier

Regularly clean the inside and outside of the humidifier to prevent dust from collecting.

1. Always unplug the humidifier before you clean it.
2. Wipe away dust with a soft dry cloth from the base of the humidifier.
3. Clean the air inlet and the air outlet with a soft dry cloth.

Never use abrasive, aggressive, or flammable cleaning agents such as bleach or alcohol to clean any part of the humidifier.

FCC Statement

1. This device complies with Part 15 of the FCC Rules. Operation is subject to the following two conditions:

(1) This device may not cause harmful interference.

(2) This device must accept any interference received, including interference that may cause undesired operation.

2. Changes or modifications not expressly approved by the party responsible for compliance could void the user's authority to operate the equipment.

NOTE:

This equipment has been tested and found to comply with the limits for a Class B digital device, pursuant to Part 15 of the FCC Rules. These limits are designed to provide reasonable protection against harmful interference in a residential installation.

This equipment generates uses and can radiate radio frequency energy and, if not installed and used in accordance with the instructions, may cause harmful interference to radio communications. However, there is no guarantee that interference will not occur in a particular installation. If this equipment does cause harmful interference to radio or television reception, which can be determined by turning the equipment off and on, the user is encouraged to try to correct the interference by one or more of the following measures:

Reorient or relocate the receiving antenna.

Increase the separation between the equipment and receiver.

Connect the equipment into an outlet on a circuit different from that to which the receiver is connected.

Consult the dealer or an experienced radio/TV technician for help.

FCC RF Radiation Exposure Statement

This equipment complies with FCC radiation exposure limits set forth for an uncontrolled environment. To comply with FCC RF Exposure compliance requirements, this grant is applicable to only Mobile Configurations. The antennas used for the transmitter must be installed to provide a separation distance of at least 20cm from all persons and must not be co-located or operating in conjunction with any other antenna or transmitter.