

品名：RFMTA34071AIMLB401

1. Explanation of part number :

RF	MTA	3407	1A	I	M	L	B	4	01
Type Code	Product Code	Dimension (Unit: mm)	Cable Length (unit: cm)	Connector Brand	Type of Connector	Application	Project status	Wire Diameter	Project
RF Device	MTA: Metal Antenna	Per 2 digits of length, width e.g.:3407 Length 34mm, Width 7.8mm	2 digits for cable length e.g.:1A Cable Length:150cm	A: N C:MCX D:IPEX III E: IPEX IV F: IPEX A13 H: Hirose I: IPEX M: MMCX S: SMA T: TNC U:MURATA N: None	A: Reverse Female B: Reverse Male F: Female M: Male N: None	0: 0GHz 3: 3GHz 5: 5GHz 6: 6GHz A: 2.4GHz ISM band B: GSM 900/1800 dual band G: GPS band L: 2.4/5.2/5.8 GHz tri-band N: NFC T: LTE band W: WCDMA band	B: MP T:During Test X: Pile Run	0:None 1:Ø0.81 3:Ø1.13 4:Low LossØ1.13 6:RG316 7:Ø1.37 8:RG178	01-99 series number

2. Electrical Specification :

Item	Specification
Working Frequency Range	2.4 ~ 2.5 / 5.15 ~ 5.85 GHz
Return Loss	-10 dB(Max)
VSWR	2 max.
Gain	-3.04 dBi@2.4 ~ 2.5 GHz -2.31 dBi@5.15 ~ 5.85 GHz
Polarization	Linear
Radiation Pattern	Omni-directional
Impedance	50Ω

UNLESS OTHER SPECIFIED TOLERANCES ON :
 X = N/A X.X = N/A X.XX = N/A
 ANGLES = N/A HOLEDIA = N/A



INPAQ TECHNOLOGY CO., LTD.

SCALE : N/A UNIT : mm
 DRAWN BY : 李欣樺 CHECKED BY : 詹惠雯
 DESIGNED BY : 林育帆 APPROVED BY : 陳振榮

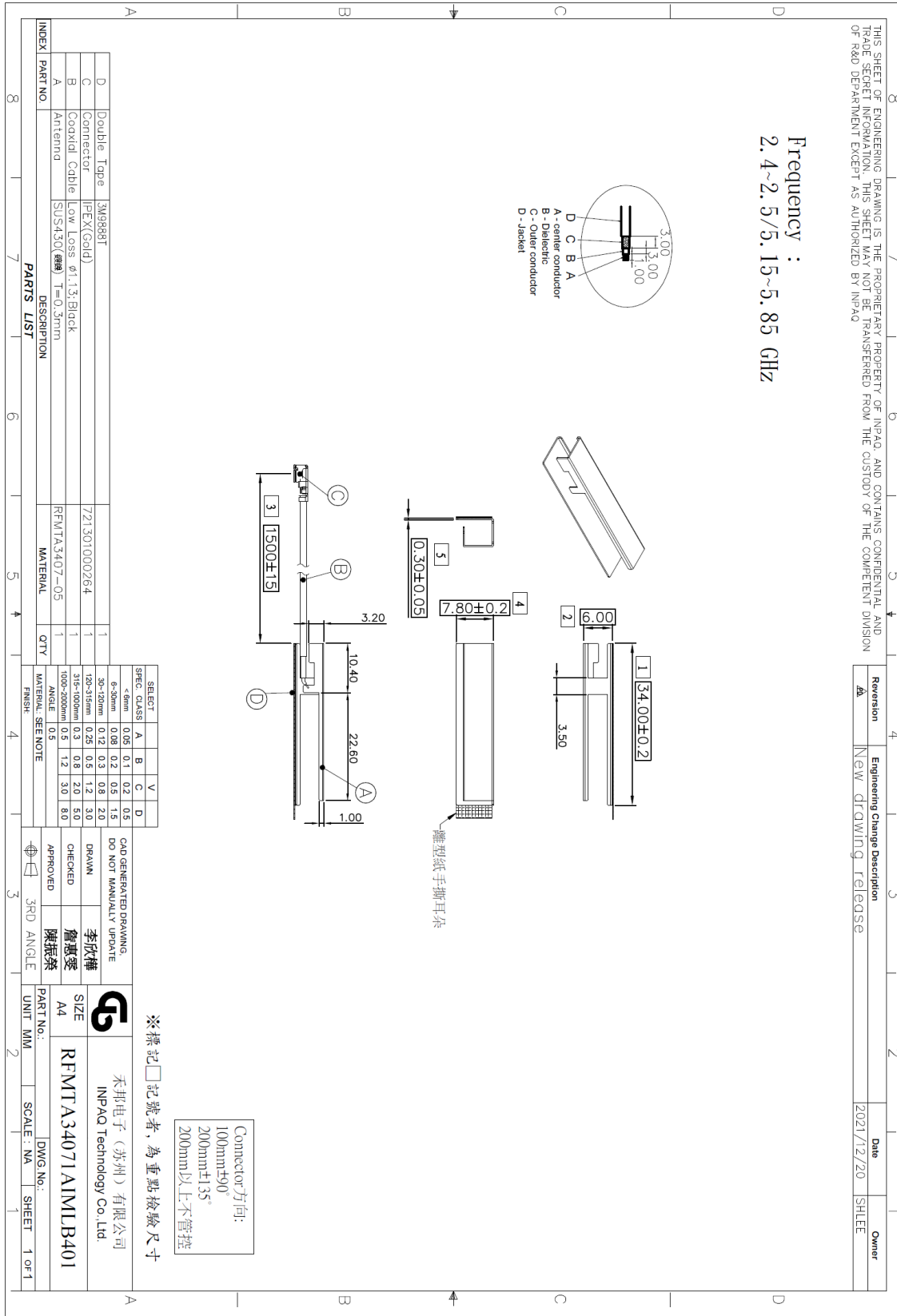
THIS DRAWINGS AND SPECIFICATIONS ARE THE PROPERTY OF INPAQ TECHNOLOGY CO.,LTD.AND SHALL NOT BE REPRODUCED OR USED AS THE BASIS FOR THE MANUFACTURE OR SALE OF APPARATUS OR DEVICES WITHOUT PERMISSION


TITLE : RFMTA34071AIMLB401

DOCUMENT NO.

SPEC REV.
P0

3. Antenna Drawing :



UNLESS OTHER SPECIFIED TOLERANCES ON : X=N/A X.X=N/A X.XX=N/A ANGLES=N/A HOLEDIA=N/A		 INPAQ TECHNOLOGY CO., LTD.
SCALE : N/A	UNIT : mm	
DRAWN BY : 李欣樺	CHECKED BY : 詹惠愛	THIS DRAWINGS AND SPECIFICATIONS ARE THE PROPERTY OF INPAQ TECHNOLOGY CO.,LTD.AND SHALL NOT BE REPRODUCED OR USED AS THE BASIS FOR THE MANUFACTURE OR SALE OF APPARATUS OR DEVICES WITHOUT PERMISSION
DESIGNED BY : 林育帆	APPROVED BY : 陳振榮	
TITLE : RFMTA34071A1MLB401		DOCUMENT NO.
		SPEC REV. P0