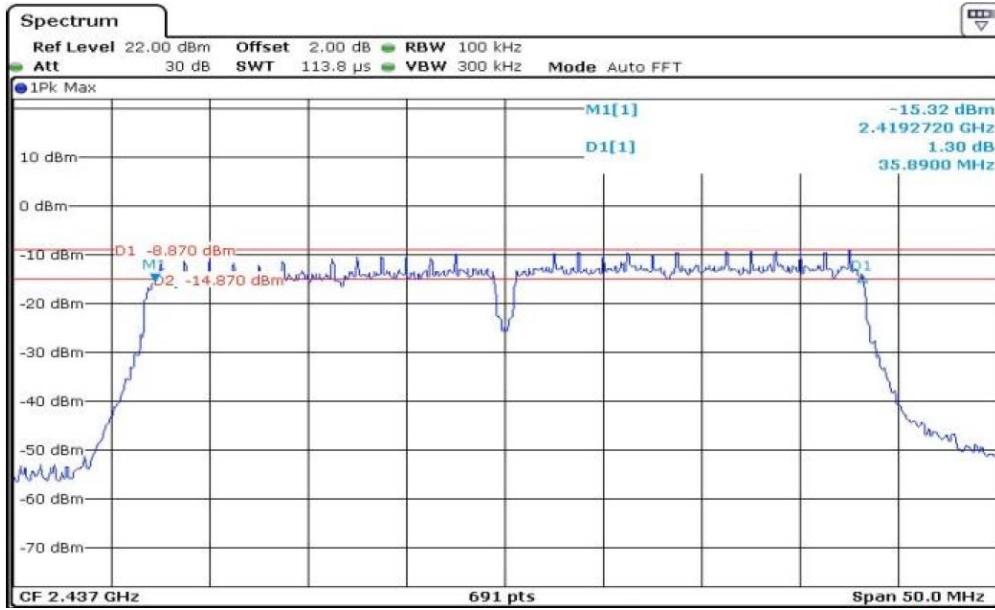
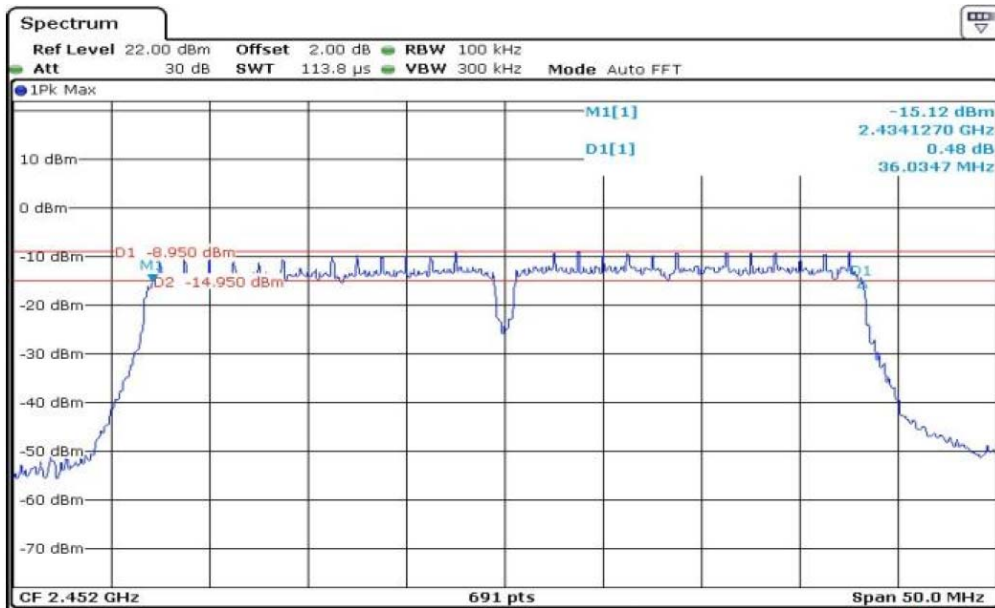




802.11n-HT40 Middle Channel



802.11n-HT40 High Channel





10 Maximum Peak Output Power

Test Requirement : FCC CFR47 Part 15 Section 15.247

Test Method : ANSI C63.10:2013

Test Limit : Regulation 15.247 (b)(3), For systems using digital modulation in the 902-928 MHz, 2400-2483.5 MHz, and 5725-5850 MHz bands: 1 Watt. As an alternative to a peak power measurement, compliance with the one Watt limit can be based on a measurement of the maximum conducted output power.

10.1 Test Procedure

1. The testing follows the Measurement Procedure of FCC KDB No. 558074 DTS D01 Meas. Guidance v04 section 9.1.2 PKPM1 Peak Power meter method.
2. The RF output of EUT was connected to the power meter by RF cable and attenuator. The path loss was compensated to the results for each measurement.
3. Set to the maximum power setting and enable the EUT transmit continuously.
4. Measure the conducted output power and record the results in the test report.

10.2 Test Result

Modulation	Maximum Peak Output Power (dBm)			Limit
	Low Channel	Middle Channel	High Channel	
802.11b	16.78	16.54	17.04	1W(30dBm)
802.11g	15.15	15.03	15.26	1W(30dBm)
802.11n-HT20	13.18	13.36	13.40	1W(30dBm)
802.11-HT40	13.29	13.28	13.27	1W(30dBm)



PRECISE TESTING

11 Power Spectral density

- Test Requirement : FCC CFR47 Part 15 Section 15.247
- Test Method : ANSI C63.10:2013
- Test Limit : Regulation 15.247(f) The power spectral density conducted from the intentional radiator to the antenna due to the digital modulation operation of the hybrid system, with the frequency hopping operation turned off, shall not be greater than 8 dBm in any 3 kHz band during any time interval of continuous transmission.

11.1 Test Procedure

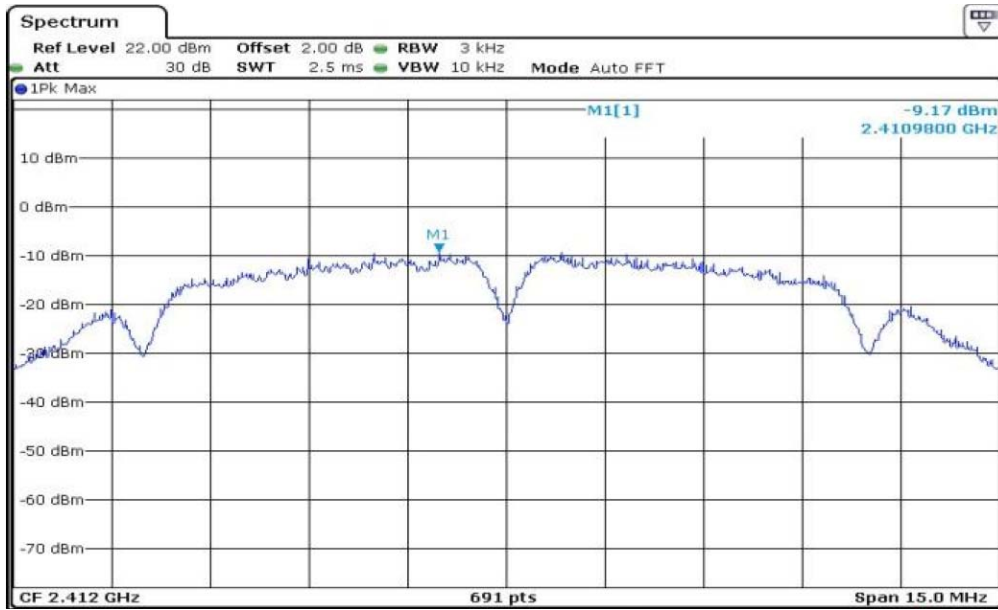
1. Remove the antenna from the EUT and then connect a low RF cable from the antenna port to the spectrum.
2. Set the spectrum analyzer: RBW = 3kHz. VBW = 10kHz, Span = 1.5 times the DTS channel bandwidth(6 dB bandwidth). Sweep = auto; Detector Function = Peak. Trace = Max hold.
3. Allow the trace to stabilize. Use the marker-delta function to determine the separation between the peaks of the adjacent channels. The limit is specified in one of the subparagraphs of this Section Submit this plot.

11.2 Test Result

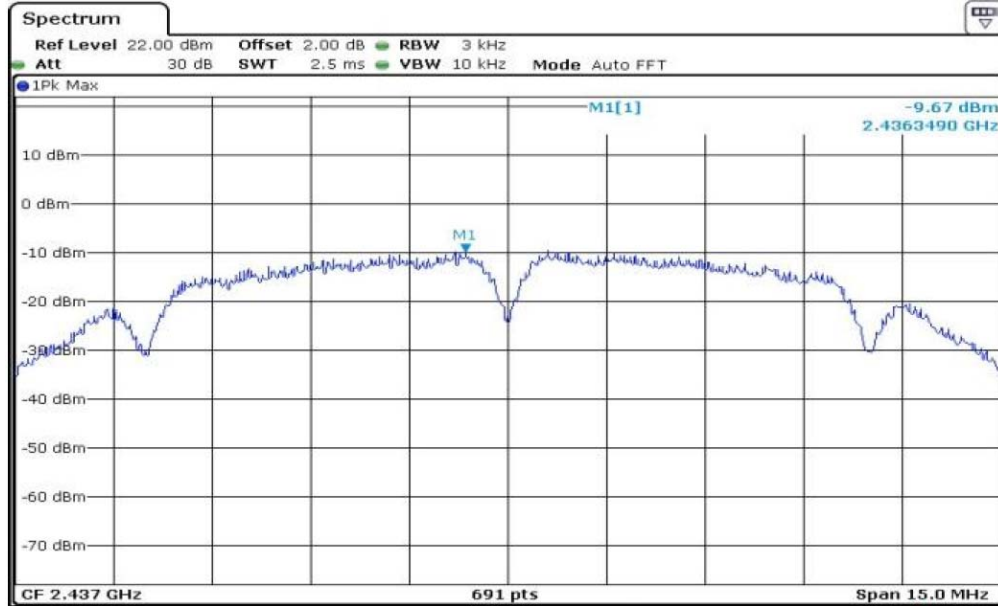
Modulation	Power Spectral density (dBm/3kHz)			Limit
	Low Channel	Middle Channel	High Channel	
802.11b	-9.17	-9.67	-8.00	8dBm/3kHz
802.11g	-17.05	-18.17	-18.17	8dBm/3kHz
802.11n-HT20	-20.03	-20.35	-19.94	8dBm/3kHz
802.11n-HT40	-21.78	-21.86	-21.73	8dBm/3kHz



802.11b Low Channel

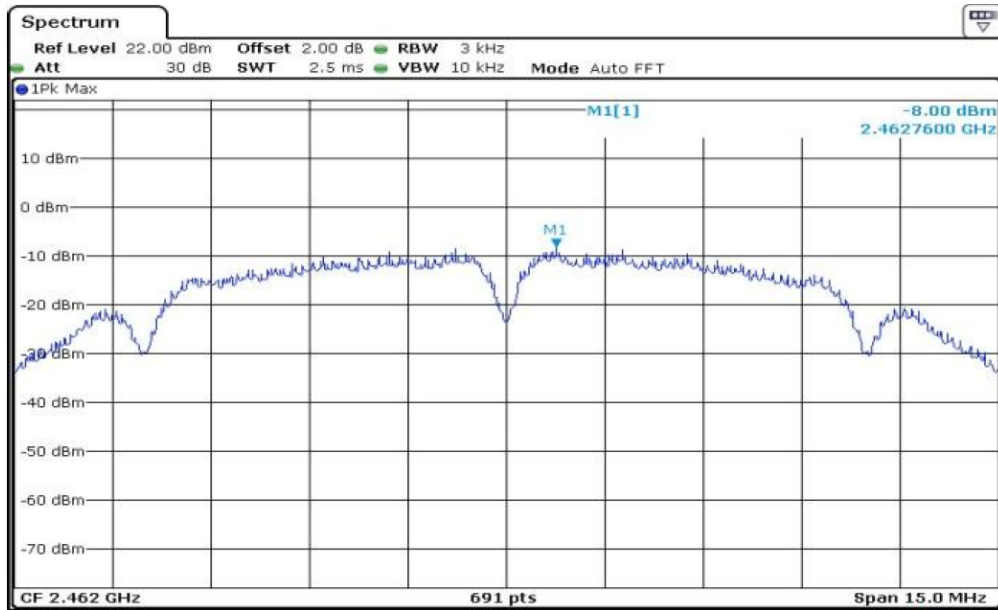


802.11b Middle Channel

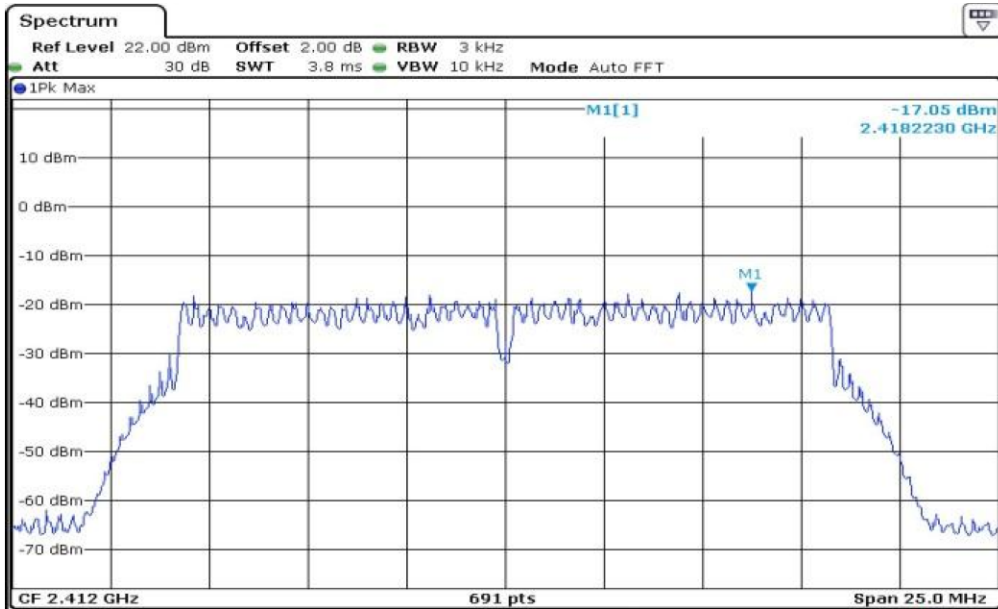




802.11b High Channel

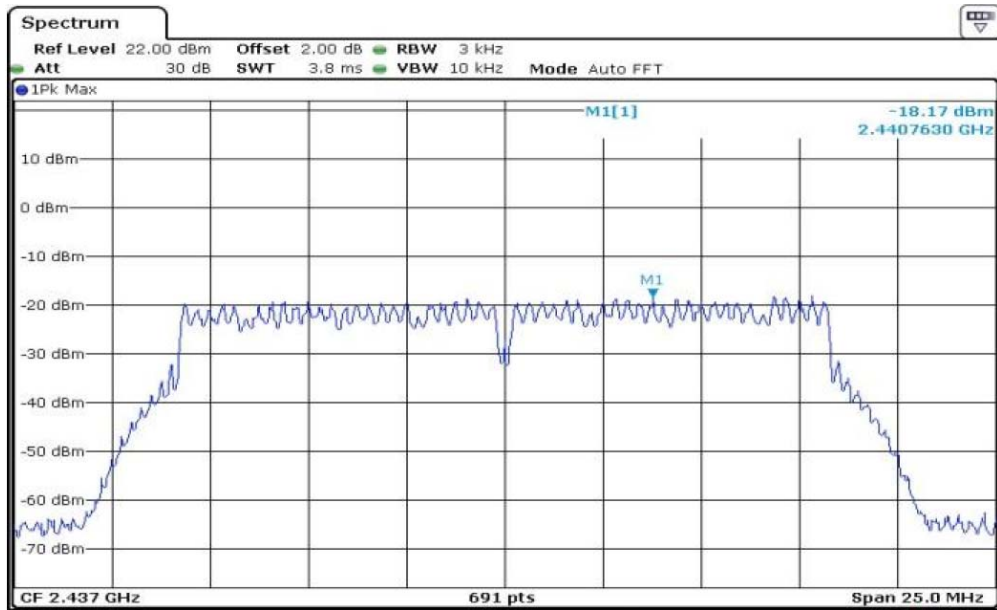


802.11g Low Channel

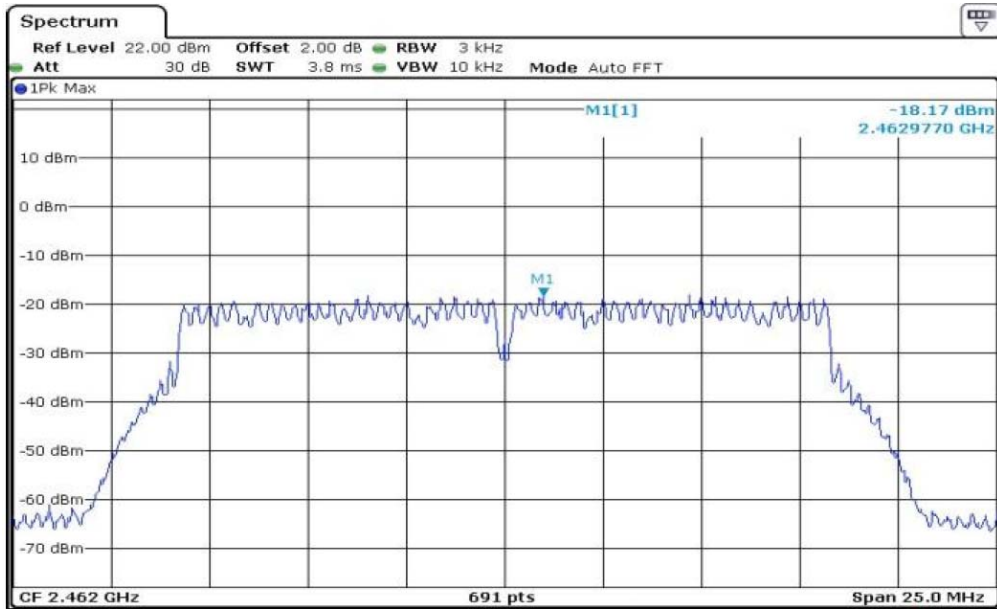




802.11g Middle Channel

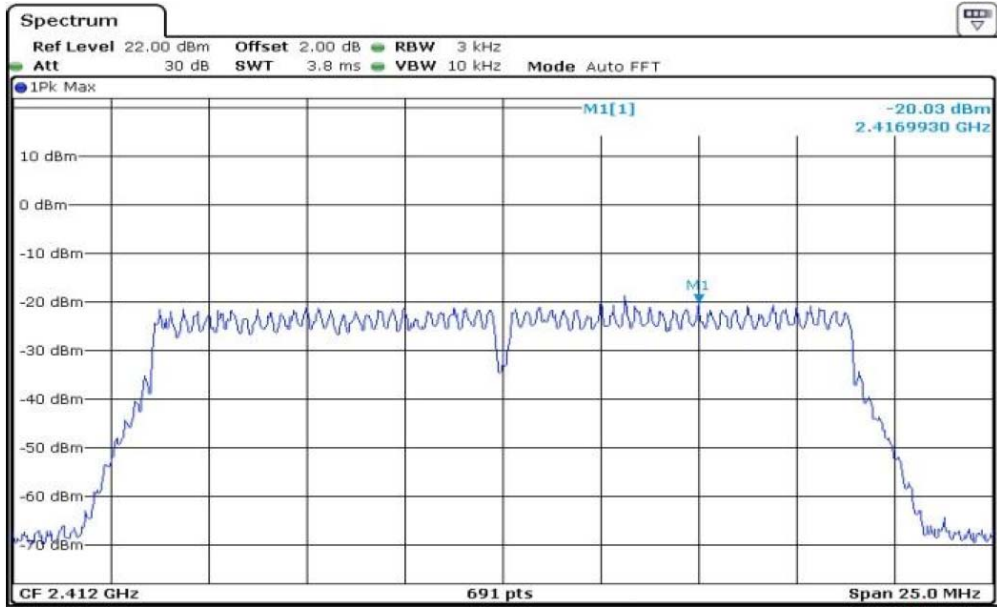


802.11g High Channel

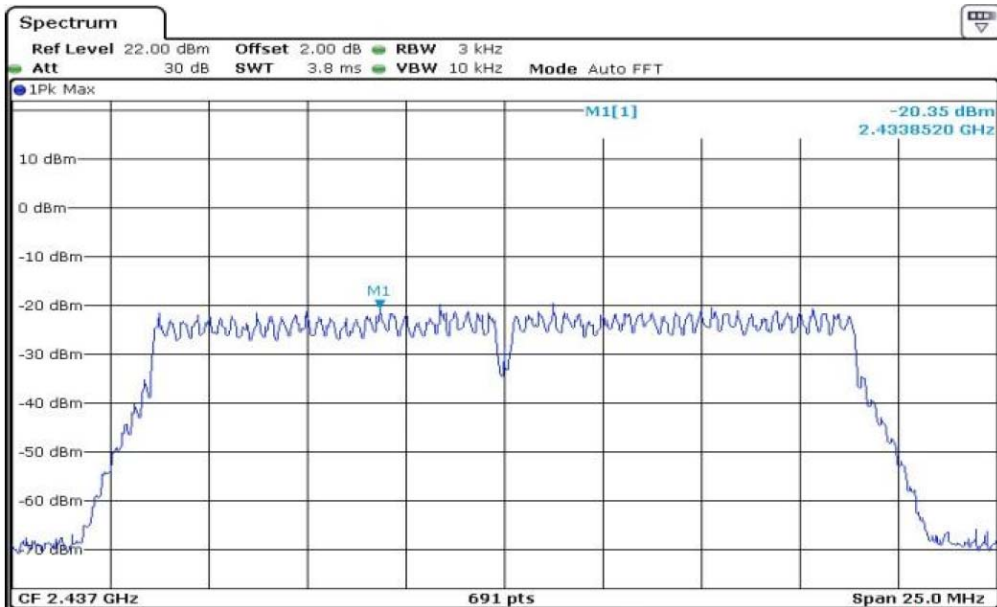




802.11n-HT20 Low Channel

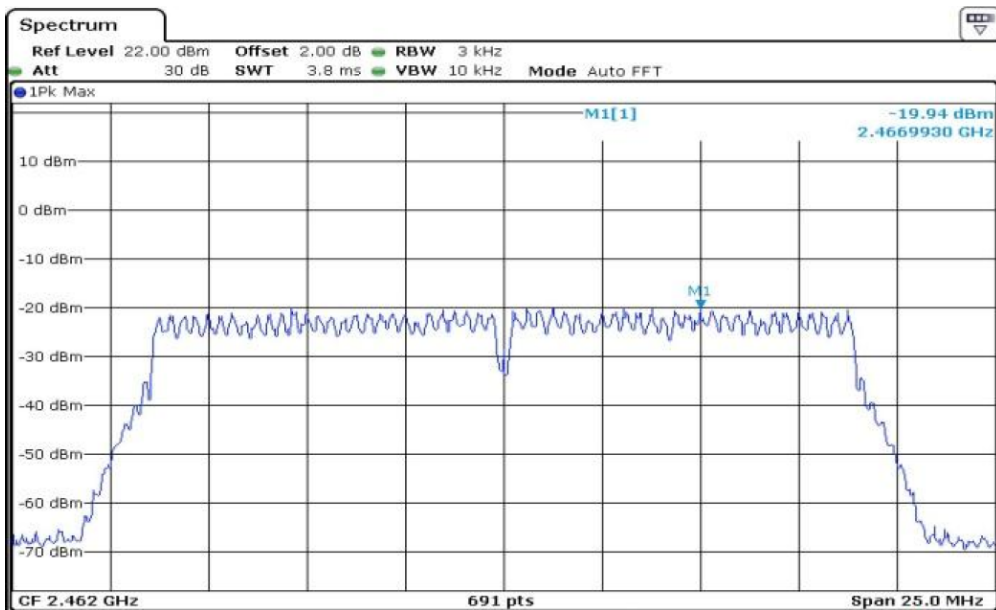


802.11n-HT20 Middle Channel

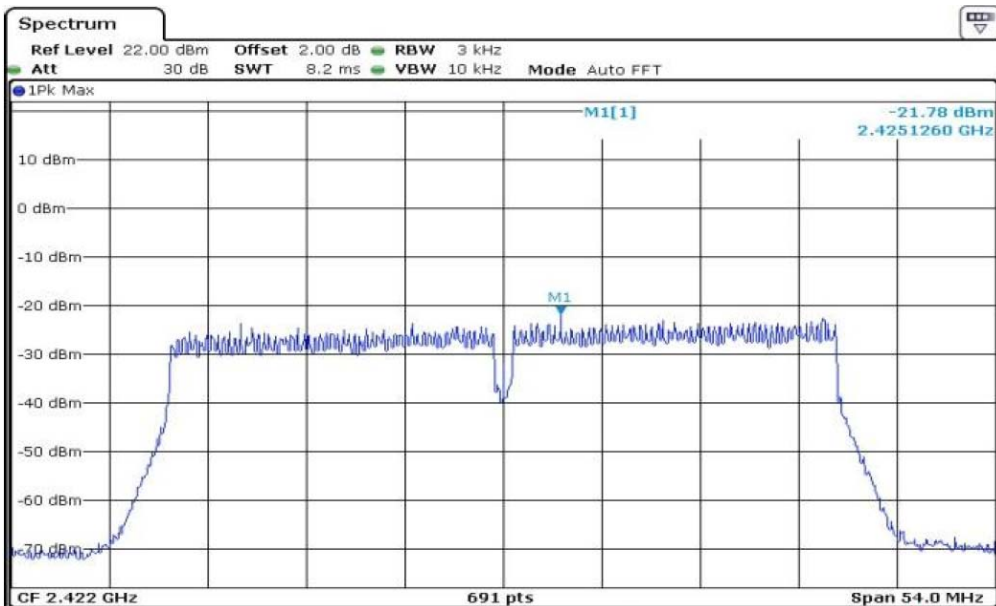




802.11n-HT20 High Channel

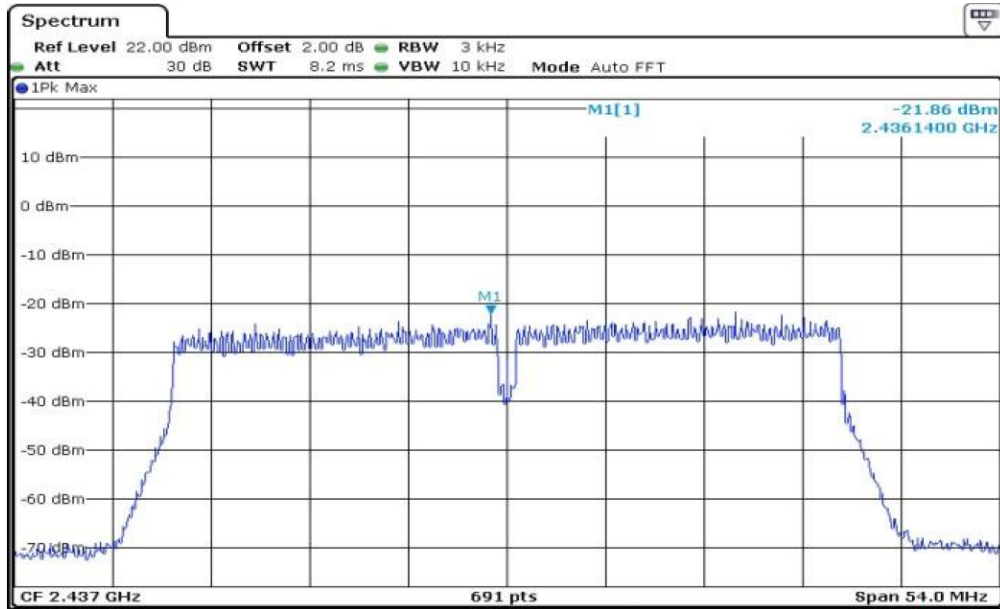


802.11n-HT40 Low Channel

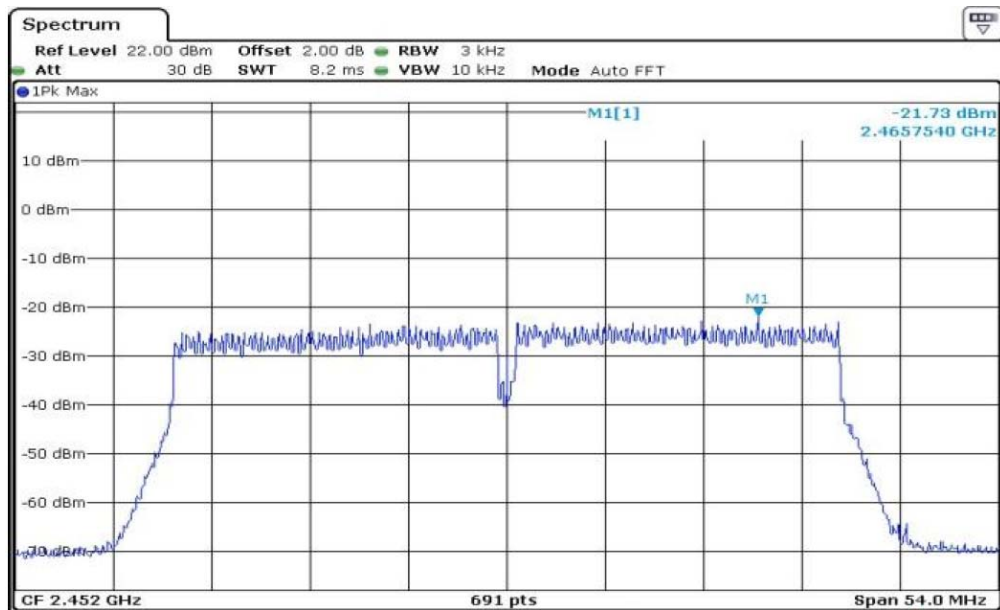




802.11n-HT40 Middle Channel



802.11n-HT40 High Channel





PRECISE TESTING

Report No.: PTC18070523201E-FC01

12 Antenna Application

12.1 Antenna Requirement

For intentional device, according to FCC 47 CFR Section 15.203, an intentional radiator shall be designed to ensure that no antenna other than that furnished by the responsible party shall be used with the device. And according to FCC 47 CFR Section 15.247 (b), if transmitting antennas of directional gain greater than 6dBi are used, the power shall be reduced by the amount in dB that the directional gain of the antenna exceeds 6dBi.

12.2 Result

The EUT'S antenna, permanent attached antenna, is internal antenna. The antenna's gain is 3dBi and meets the requirement.

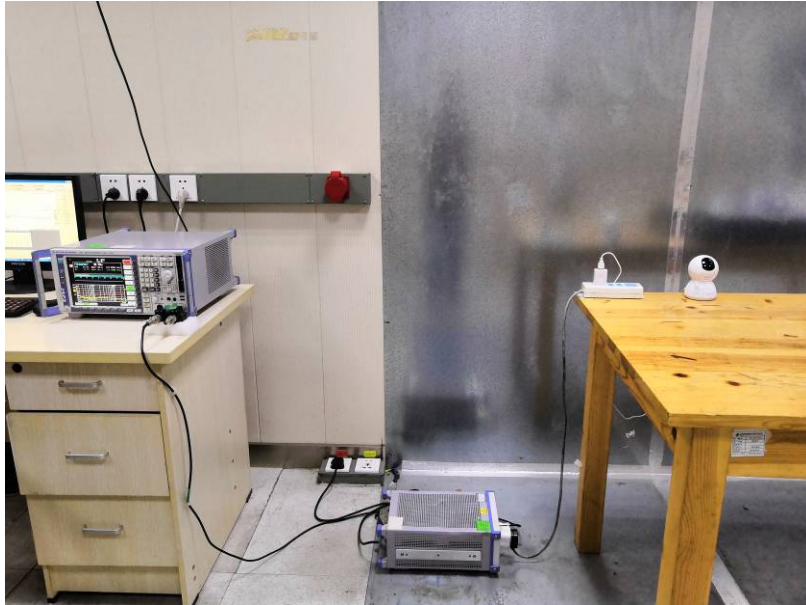


PRECISE TESTING

Report No.: PTC18070523201E-FC01

13 Test Setup

Conducted Emissions



Radiated Spurious Emissions From 30MHz-1000MHz





PRECISE TESTING

Report No.: PTC18070523201E-FC01

Test frequency from 1GHz-18GHz



Test frequency from 18GHz-25GHz

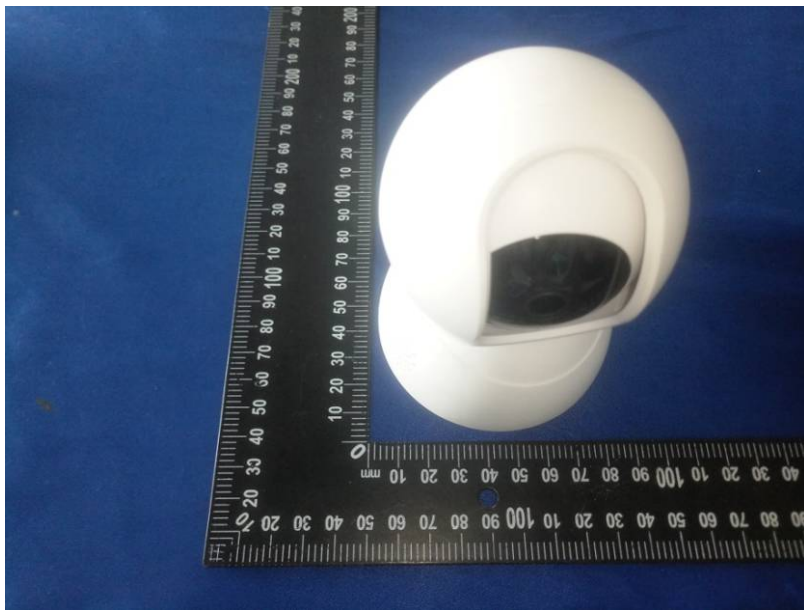




PRECISE TESTING

Report No.: PTC18070523201E-FC01

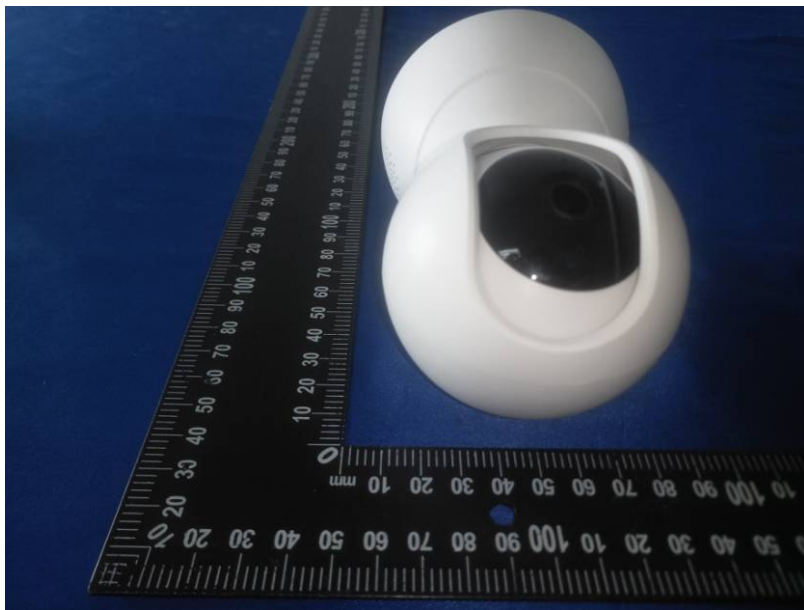
14 EUT Photos





PRECISE TESTING

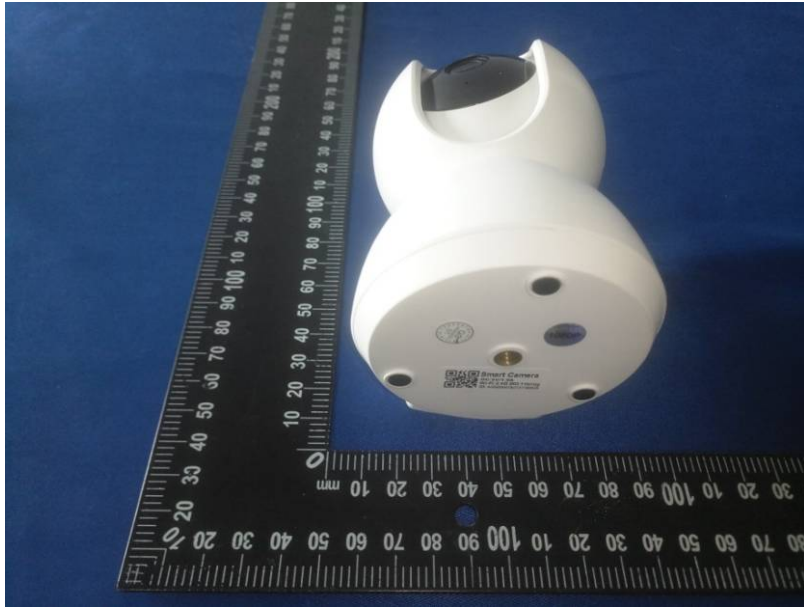
Report No.: PTC18070523201E-FC01





PRECISE TESTING

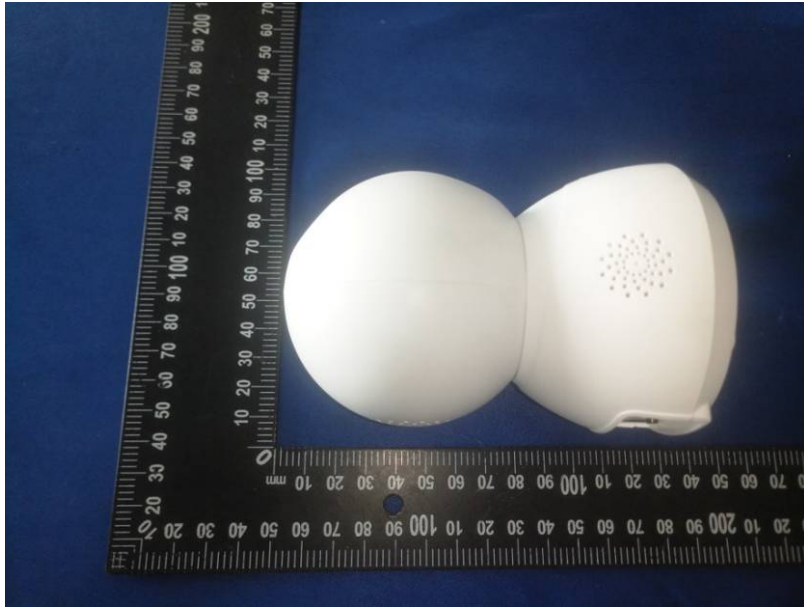
Report No.: PTC18070523201E-FC01





PRECISE TESTING

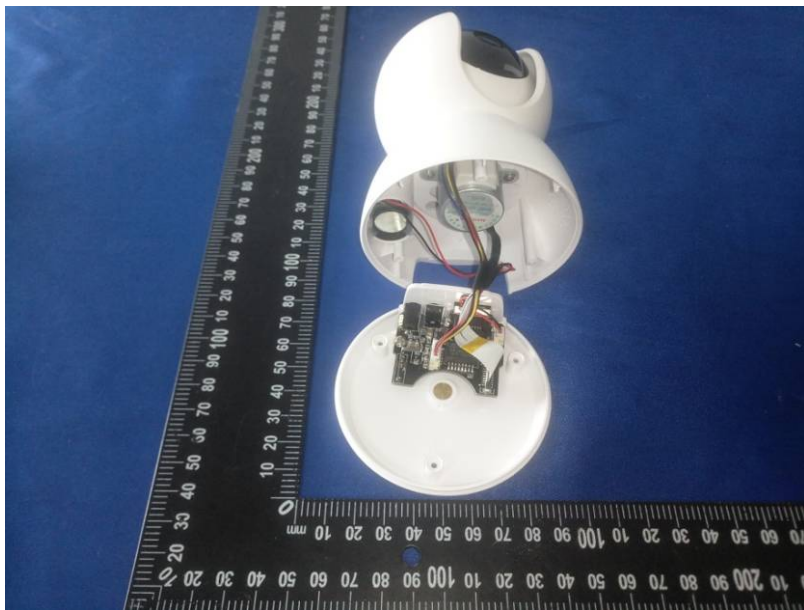
Report No.: PTC18070523201E-FC01





PRECISE TESTING

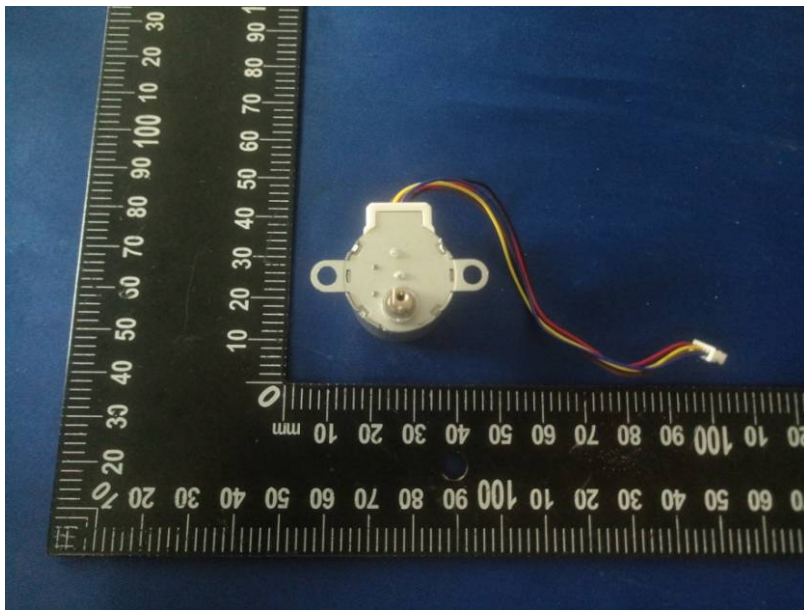
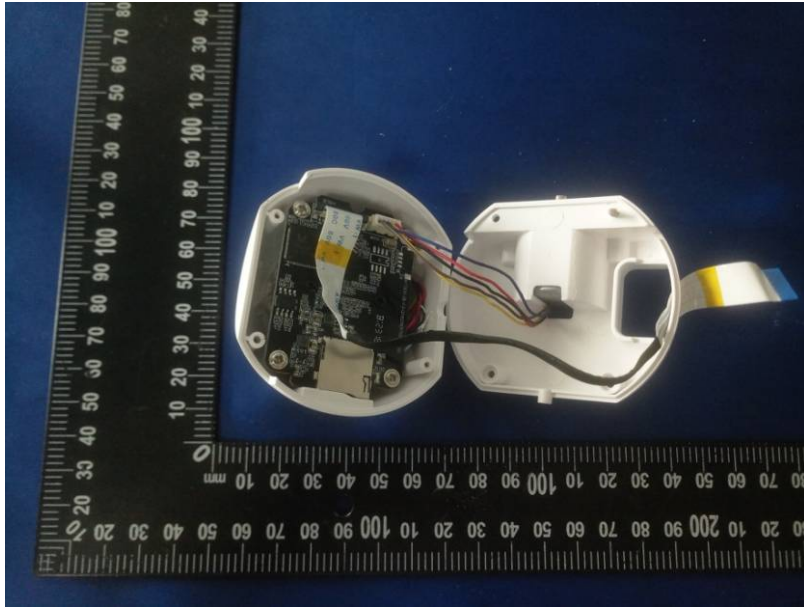
Report No.: PTC18070523201E-FC01





PRECISE TESTING

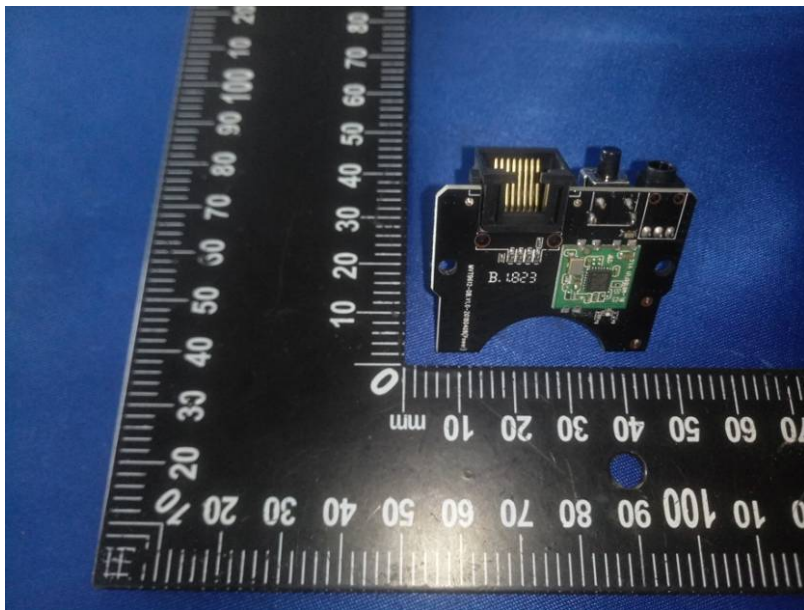
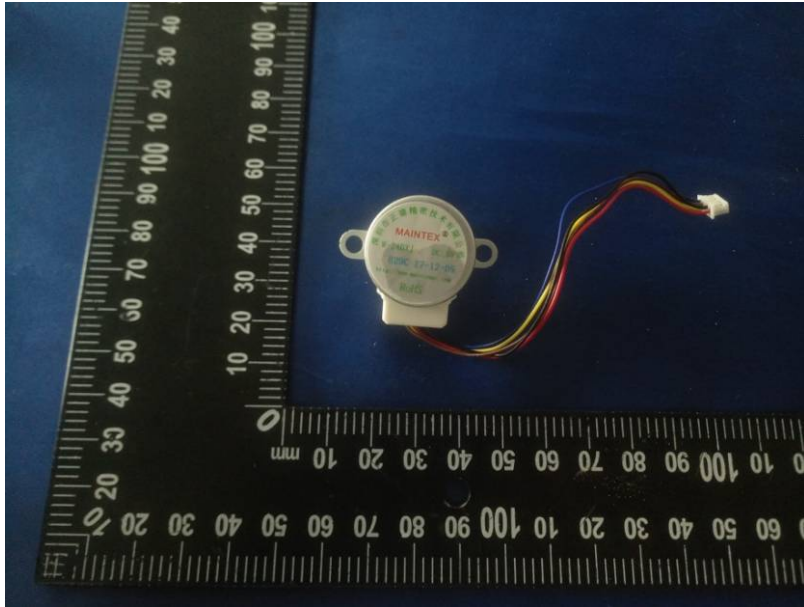
Report No.: PTC18070523201E-FC01





PRECISE TESTING

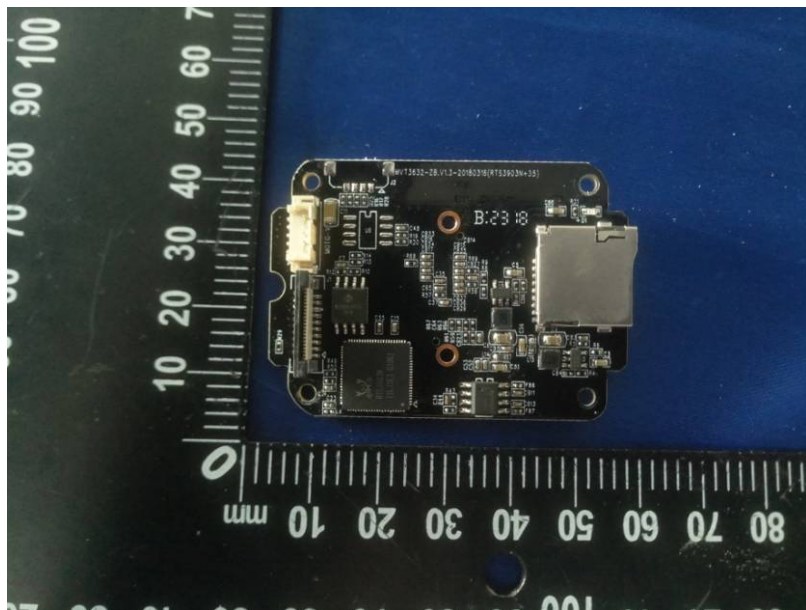
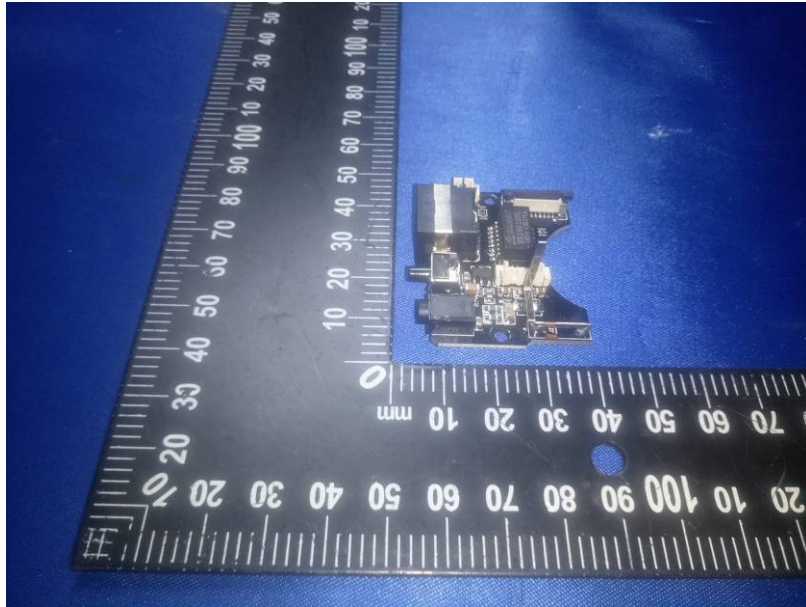
Report No.: PTC18070523201E-FC01





PRECISE TESTING

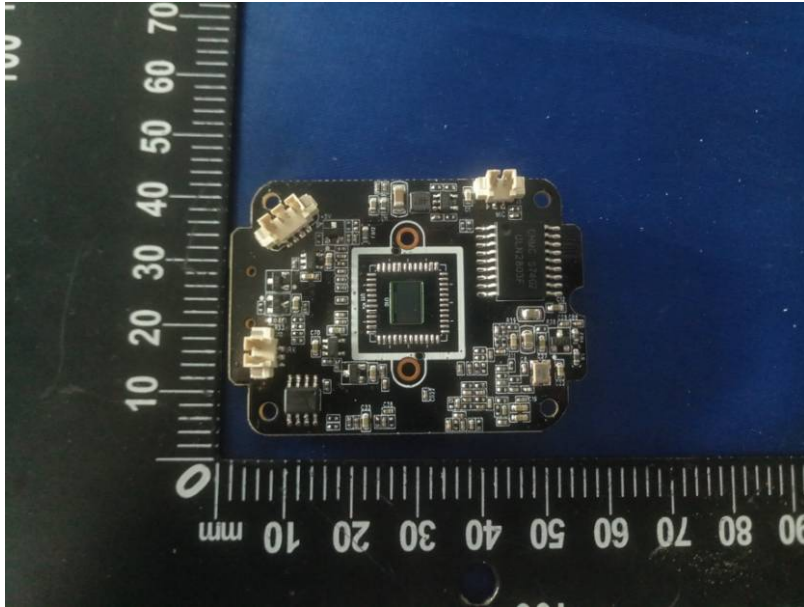
Report No.: PTC18070523201E-FC01





PRECISE TESTING

Report No.: PTC18070523201E-FC01





PRECISE TESTING

Report No.: PTC18070523201E-FC01



*****THE END REPORT*****