



# Quick Guide for Watching

## 1. Software installation & download and install APP for smart phones

 Search "V380" in the App Store install app  
 Search "V380" in Google play install app



## 2. User registration / login

## 3. Configuration and watch

### Mode 1: WIFI Smartlink

Devices which support Smartlink configuration can issue a voice prompt "waiting for wifi smartlink configuration". The default setting of Other devices like outdoor cameras is AP Hotspot Mode and it can be configured according to "AP Quick Configuration" or "Hotspot Configuration".

### Important Note:

- The WIFI Camera default Mode is: WIFI smart Link
- If you want to change the WIFI router, you need to reset the WIFI Camera: Push the WIFI Camera "Reset" button for 10 seconds (some model PTZ Camera's reset button at the Bottom of the Camera), then the Camera will restore the default setting.
- You can set the Camera to work as the independent Access Point(Hotspot) by push the "reset" button on the camera for 1-2 seconds if the Camera smartlink mode, or change the mode by APP's "Network setting"



1

Plan to configure

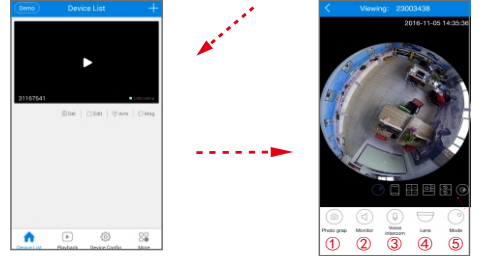
Please enter the name and password of the device router

First, user should make sure that the Mobile phone has already connected to the proper WIFI router Access point

Step 1: Click the "WIFI Smart Link" Menu, the ui show as below picture:

Step 2: Input the Access point Router's password (make sure that its SSID is correct) and click the "Next" button

After you done that, the WIFI Camera will try to connect the Access Point Router with the SSID and password you have inputed. The process will take 30-60 seconds after the WIFI Camera connect the WIFI Access Point router successfully the WIFI Camera ID will be added to the device list. Last, you can click the item on the device list, then you can see the live video



- ① Image capture
- ② Sound monitoring
- ③ Voice intercom
- ④ Lens direction
- ⑤ Image mode

2

### Mode 2: AP mode configuration

WLAN

1. Open the phone WIFI, Hot spots of connection equipment(MV\* is a hot spot at the beginning).

2. On APP, click "Add networking equipment"

Add device

Device ID: Please enter device ID

User name: admin

Password: Please enter password

LAN search

Confirm and

3. Click on the "local search", search out the equipment after clicking "add selected equipment", click "add equipment, equipment configuration and network settings, check the "station mode", select the WIFI router, and fill in the router's WIFI password, and save, hear the voice prompt routing connection equipment complete the "complete configuration"

3

### Mode 3: Quick AP config (this mode can not be supported by iPhone, iPhone users have to connect the camera AP by manual)

WIFI Smart Link

Search for device

With AP Mode selected, please click "Device Unlinked" on your app, click "AP Quick Setup" and the device will be appeared. (Because the default setting of outdoor cameras is AP Hotspot Mode, please long-press the Reset key to activate AP Hotspot Mode.)

Quick configuration

3. Click on the "local search", search out the equipment after clicking "add selected equipment", click "add equipment, equipment configuration and network settings, check the "station mode", select the WIFI router, and fill in the router's WIFI password, and save, hear the voice prompt routing connection equipment complete the "complete configuration"

4

## 4. Video playback

Playback

Choose device: 31322982

Record Type: All Record

Select Date: 2016-09-07

Start Time: 00:00

End Time: 23:59

Search File

Recording File List

Search the record files

The record files

Video playback

2016-11-05 14:52:19

Record playback

playback mode

progress bar

sound

next

stop/play

screenshot

5

## 5. Device settings

Device information settings

Choose device: 23003438

Network settings

Recording settings

Time settings

Alarm settings

Device Password

Static IP configuration

Device Upgrade

After choosing device, you can configure it. The introduction to various functions is as follows

- 1. Network Setting:** AP mode and station mode can be interchanged; AP mode: Set the Camera work as a independent Access Point(Hotpot). (The wifi camera work as a WIFI Access Point, the prefix is "MV", ex: "MV31000000") Station mode: Set the Camera work as wifi station, the camera will connect the wifi router you selected and you can access you camera by internet
- 2. Record Setting:** automatic record: continuous recording; record-on-alarm: record with alarm event; audio record: record the sound; record resolution: standard-definition(VGA), high-definition(720P/960P) (choose high-definition record, with big record files and short storage time in memory card)
- 3. Alarm & Prompt:** disarm switch: close or Open the alarm; voice maser switch: master switch for all voice prompts; alarm voice prompts: switch for movement alarm voice; voice language: enable the voice prompts
- 4. Date & Time:** able to adjust time of device;
- 5. User Management:** able to modify the username and password of camera

6

### 6. Static IP configuration:

Equipment can be static IP is set to manual configuration or automatic configuration

### 7. Version information:

able to obtain information of device system and hardware

1. Network Setting

2. Record Setting

3. Alarm & Prompt

4. User Management

5. Static IP Configuration

6. Detect update

7

## 6. More functions

More functions

13302096978

Mobile phone alarm notice setting

View, to share, delete pictures, view, delete the video

Server Area Selection

Check device configuration instruction and FAQs

Setting the APP's password

Update latest version of APP automatically online

## 7. Modify and delete

Device List

- Delete: able to delete one device entry individually
- Edit: able to modify ID number, username and password of the device (if you enter error username and password, you can modify it here directly, rather than adding another device entry)
- Arm: Protection, removal of equipment can be
- Megs: playback the snap picture
- Long press the device ID to proceed bulk deletions (On the android mobile phones do not support this operation)

8

This device complies with Part 15 of the FCC rules. Operation is subject to the following two conditions: 1) this device may not cause harmful interference, and 2) this device must accept any interference received, including interference that may cause undesired operation.

Note: This equipment has been tested and found to comply with the limits for a Class B digital device, pursuant to part 15 of the FCC Rules. These limits are designed to provide reasonable protection against harmful interference in a residential installation. This equipment generates, uses and can radiate radio frequency energy and, if not installed and used in accordance with the instructions, may cause harmful interference to radio communications. However, there is no guarantee that interference will not occur in a particular installation. If this equipment does cause harmful interference to radio or television reception, which can be determined by turning the equipment off and on, the user is encouraged to try to correct the interference by one or more of the following measures:

- Reorient or relocate the receiving antenna.
- Increase the separation between the equipment and receiver.
- Connect the equipment into an outlet on a circuit different from that to which the receiver is connected.
- Consult the dealer or an experienced radio/TV technician for help.

Caution: Changes or modifications not expressly approved by the party responsible for compliance could void the user's authority to operate the equipment.