

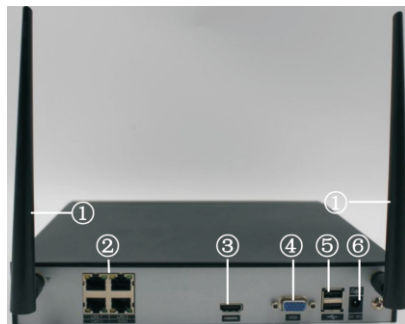


# WIFI NVR Kit Quick Start

Version 1.0.0  
JF TECH(Co.,Ltd)



NVR Front-end panel



NVR Rear panel

## 1 Statement

This guide is applicable for WIFI NVR(Network Video Recorder) kit, only give a quick start for WIFI NVR/IPC wireless connection and some basic settings in NVR. For more information, please download NVR and IPC manual from our website.

## 2 Interface Introductions



Network Camera Pigtail

NO	Definition	NO	Definition	NO	Definition
1	WIFI antenna	2	Network port (3xLAN&1xWan)	3	HDMI output
4	VGA output	5	USB	6	DC12V input

**Note: among network ports②, Wan port is used for NVR to be connected with wide area network and the other three ports are used for connecting to network cameras. The ports cannot be misused.**

NO	Definition	NO	Definition	NO	Definition
1	Network interface	2	DC12V input	3	Tarpaulin

## 3 Boot Up

### 3.1 HDD installation (skip this step if storage is not necessary.)



①Loosen the screw, disassemble the cover



②Install the hard disk and tighten the screw



③Connect the HDD with data and power cable



④Cover the machine, tighten the screw

**Note: Professional surveillance HDD like WD、Seagate is advised.**

### 3.2 Wiring

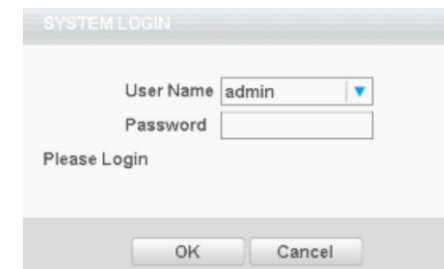
Connect to power with the matched adapter in the kit, NVR boots up, and then connect to monitor, network cable and mouse according to interface introductions.

**Note:**

- 1.Use matched power adapter to avoid abnormal situation or damage.
- 2.Shut down power switch(some series might have power switches).

### 3.3 Login in

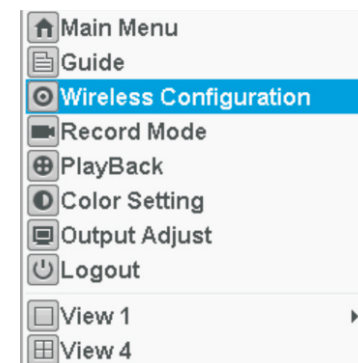
Before operating and setting, users must login and the system provides the corresponding functions with the user purview. There are two user settings. The names are admin and guest without password. The login page is as below. Please change password as soon as you log in.



## 4 WIFI Configuration

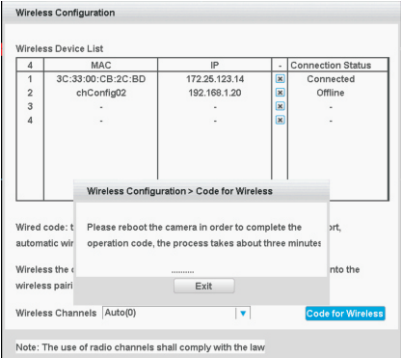
### 4.1 WIFI code matching

When NVR boots up, right click the mouse display the shortcut menu, enter **【Wireless Configuration】**



Connect the front camera by clicking **【WIFI code matching】** at the bottom right corner. If the camera has succeeded to be connected, its information will be showed in the WIFI devices list.

**Notes: After kicking “WIFI Code Matching” button, please cut off the power of network camera and restart it.**



4.2 Wired code matching

Connect the network camera into WAN PORT of NVR via network cable, it will also perform code matching automatically and add it to the NVR channel. After code matching, unplug the cable, the camera will be connected with NVR via WIFI.

5 Network Settings

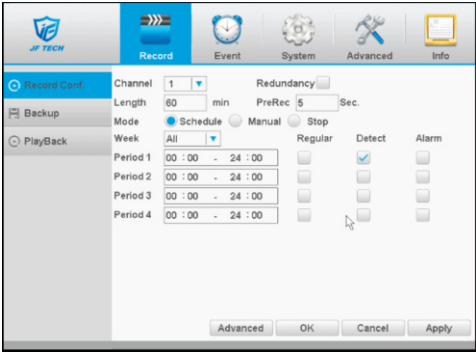
Go to **【Main Menu】 > 【Network】**, as follows:



IP address of NVR must share the same network segment with the router, and conform to its IP instead of conflicting with other IP to ensure the device access to network. You can also use“obtain an IP address automatically” so that NVR can get a dynamic IP(router is needed to have DHCP service).

6 Record Settings (HDD necessary)

- 6.1 Boot up the NVR, when accessing to the disk for the first time, the system will prompt format disk; Please format disk.
- 6.2 Go to **【Main Menu】 > 【Record Conf.】** to do record settings
- Note: At least one read-write disk is needed for normal recording.**



Channel	Corresponding channel number
Redundancy	Double backup the file
Length	Video time length:1min-120min
Mode	Schedule/Manual/Stop
Period	Time section of common recording
Videotype	Regular/Detect /Alarm

7 Playback

- There are two ways for you to active **【Playback】** option
- 1.In shortcut menu
- 2. **【Main Menu】 > 【Record】 > 【Playback】**
- Note: The HDD must be set as read-write or read-only state.

The playback interface is as follows:



1. Playback control	2. Time display	3. Synchronous
4. Video type	5. Time schedule options	6. Search by time/switch mode
7. Channel Selection	8. Date selection	9. Read/Write type selection

**【Playback control】** See detail in below chart

Button	Function	Button	Function
	Play/Pause		Backward play
	Slow play		Fast Rewind
	Previous frame		Next frame
	Previous file		Next file
	Loop		Full screen
	Edit		Start / End Clip
	Clip vid@ backup		

**Note:**  
**This quick start guide is for reference only. Slight difference may be found in the user interface.**  
**All the designs and software here are subject to change without prior written notice.**  
**All trademarks and registered trademarks mentioned are the properties of their respective owners.**  
**If there is any uncertainty or controversy, please refer to the final explanation of us.**  
**Please visit our website or contact your local retailer for more information.**

FCC Statement

This equipment has been tested and found to comply with the limits for a Class B digital device, pursuant to part 15 of the FCC rules. These limits are designed to provide reasonable protection against harmful interference in a residential installation.

This equipment generates, uses and can radiate radio frequency energy and, if not installed and used in accordance with the instructions, may cause harmful interference to radio communications.

However, there is no guarantee that interference will not occur in a particular installation. If this equipment does cause harmful interference to radio or television reception, which can be determined by turning the equipment off and on, the user is encouraged to try to correct the interference by one or more of the following measures:

- Reorient or relocate the receiving antenna.
- Increase the separation between the equipment and receiver.
- Connect the equipment into an outlet on a circuit different from that to which the receiver is connected.
- Consult the dealer or an experienced radio/TV technician for help.

To assure continued compliance, any changes or modifications not expressly approved by the party.

Responsible for compliance could void the user’s authority to operate this equipment. (Example- use only shielded interface cables when connecting to computer or peripheral devices).

This equipment complies with Part 15 of the FCC Rules. Operation is subject to the following two conditions:

- (1) This device may not cause harmful interference, and
- (2) This device must accept any interference received, including interference that may cause undesired operation.

FCC Radiation Exposure Statement:

The equipment complies with FCC Radiation exposure limits set forth for uncontrolled environment. This equipment should be installed and operated with minimum distance 20cm between the radiator and your body.