

Wireless Network Camera

Quick start

V 17.1

Hangzhou Jufeng Technology Co.,Ltd.

FCC Statement

This equipment has been tested and found to comply with the limits for a Class B digital device, pursuant to part 15 of the FCC rules. These limits are designed to provide reasonable protection against harmful interference in a residential installation.

This equipment generates, uses and can radiate radio frequency energy and, if not installed and used in accordance with the instructions, may cause harmful interference to radio communications.

However, there is no guarantee that interference will not occur in a particular installation. If this equipment does cause harmful interference to radio or television reception, which can be determined by turning the equipment off and on, the user is encouraged to try to correct the interference by one or more of the following measures:

- Reorient or relocate the receiving antenna.
- Increase the separation between the equipment and receiver.
- Connect the equipment into an outlet on a circuit different from that to which the receiver is connected.
- Consult the dealer or an experienced radio/TV technician for help.

To assure continued compliance, any changes or modifications not expressly approved by the party.

Responsible for compliance could void the user's authority to operate this equipment. (Example- use only shielded interface cables when connecting to computer or peripheral devices).

This equipment complies with Part 15 of the FCC Rules. Operation is subject to the following two conditions:

- (1) This device may not cause harmful interference, and
- (2) This device must accept any interference received, including interference that may cause undesired operation.

FCC Radiation Exposure Statement:

The equipment complies with FCC Radiation exposure limits set forth for uncontrolled environment. This equipment should be installed and operated with minimum distance 20cm between the radiator and your body.

1 Product appearance

Please open the packaging box and check whether the damaged or missing items.



Name	Number
Network camera	1
Quick start	1
Certificate	1



Accessories may vary depending on the product type

3 Interface function introduction

Number	Interface	Name
1	LAN	Ethernet port
2	POWER	DC 12V

Guarantee Card

Explain :

1.warranty period due to product defects or failure caused by itself, please contact the dealer or the company after-sales service.

2. the following circumstances are not within the scope of warranty:

- can't produce valid warranty certificate and invoice or receipt
- product failure or damage caused by human factors,.
- failure or damage caused by maintenance, modification, disassembly of the company authorized by the company.
- products beyond the warranty period.

Name : _____ TEL : _____

Address : _____

Dealer : _____ Contacts : _____

TEL : _____ Date : _____

Please take good care of the warranty card, thank you for using the company's products!

User notes

Please read the instructions carefully before use, thank you for purchasing this product.

Be careful :

When using this product, please modify the user password, so as not to be stolen by criminals.

Do not install the equipment in the damp, dust, Please install the device in a well ventilated place.

Please use and store in the allowable temperature and humidity range, do not disassemble the equipment.

Special statement:

Please refer to the kind of product, the manual is for reference only.

The specification will be updated in real time according to the product, no further notice.

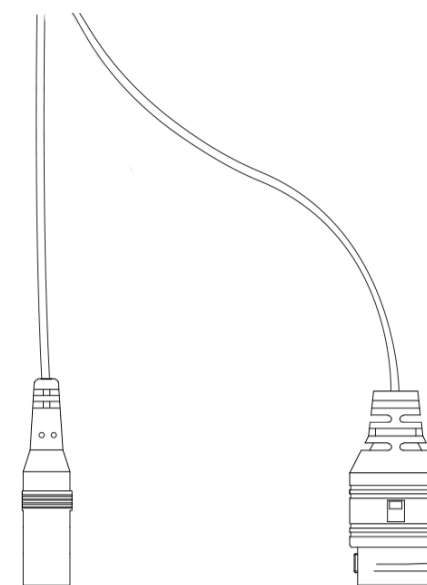


www.jufenginfo.com

For more information please visit the official website'

2 Interface description

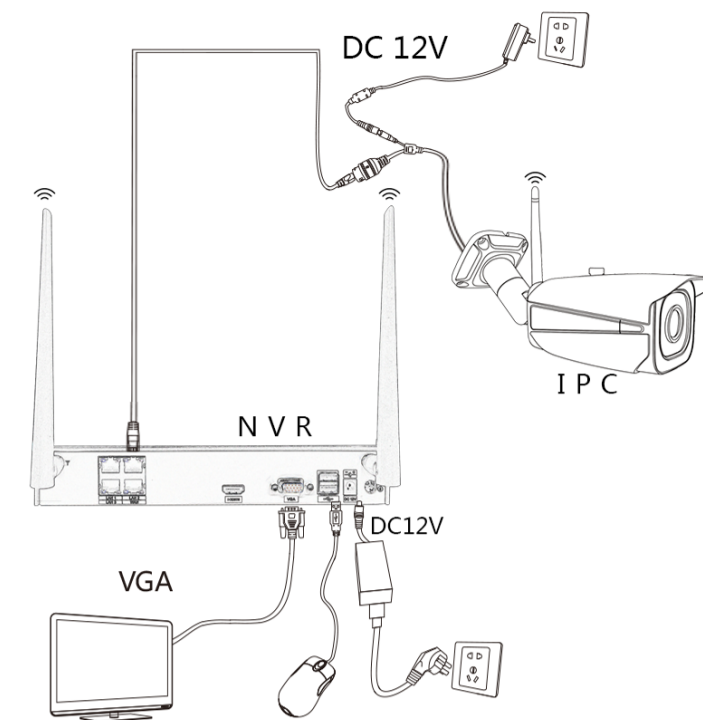
- The picture is only a reference, please refer to the actual products.



1

2

4 Connection sketch



After power on, the system starts and automatically connects the wireless IPC

5 Network configuration

All cameras are unified for the factory IP address default: 192.168.1.10, according to the actual situation, modify the IP address.

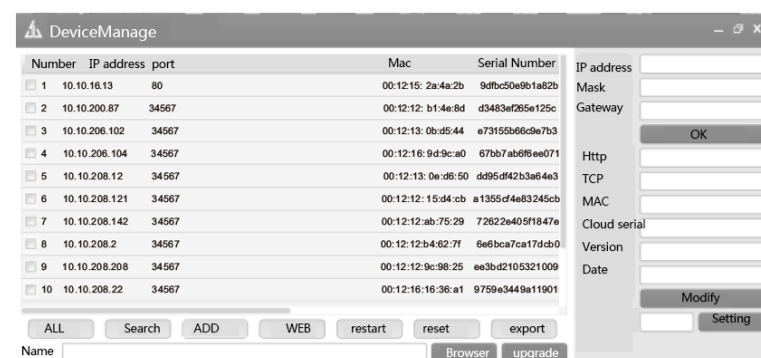
5.1 Modify IP address

Use the 『DeviceManage』 tool to get and modify the IP address. You can also log on to the WEB side, modify the IP through the network parameter configuration.

Step one:

Log on to the official website, 『service support』 -> 『Download Center』 -> 『supporting software download』 -> 『other tools to download』 -> 『DeviceManage』 download the installation package, according to the prompts to install the software.

Step two: open [DeviceManage], click [search]



Step three:

check the camera in the left IP IP to modify the list, click on the right [] consistent with local PC automatically modify the IP, can also choose to modify the IP camera hook, planned IP on the right side of the IP address, subnet mask, gateway input.

Step four:

modify the IP after the single [modify] to confirm that the modified IP.

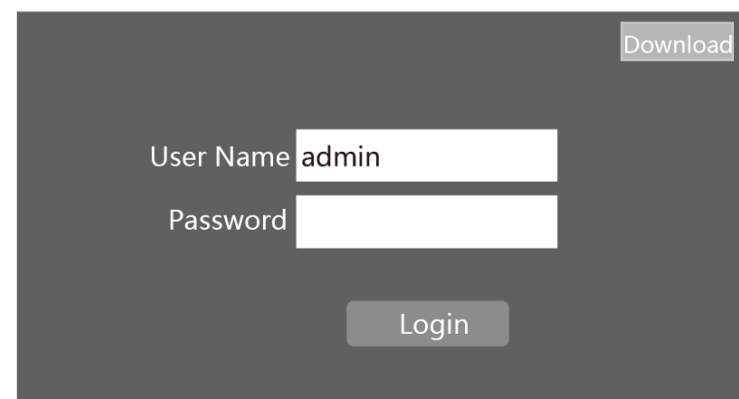
5.2 WEB login

Step one:

open the IE browser, enter the camera IP address in the address bar

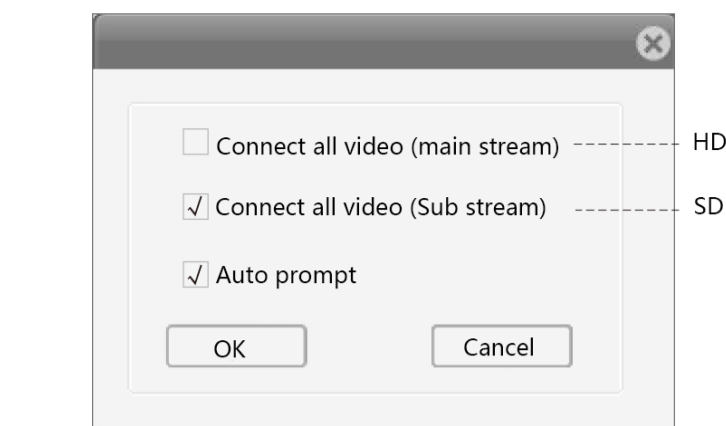
Step two:

click the download controls, according to the prompts to install plug-ins, and then enter the user name and password login



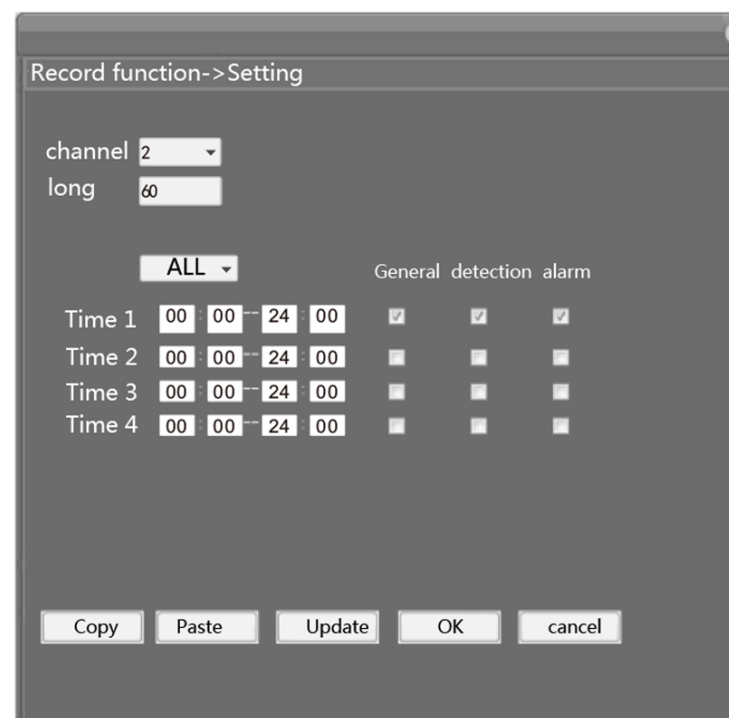
⚠ Network camera factory default administrator user name is 『admin』, the password is empty

Step three: select a good stream click [OK]

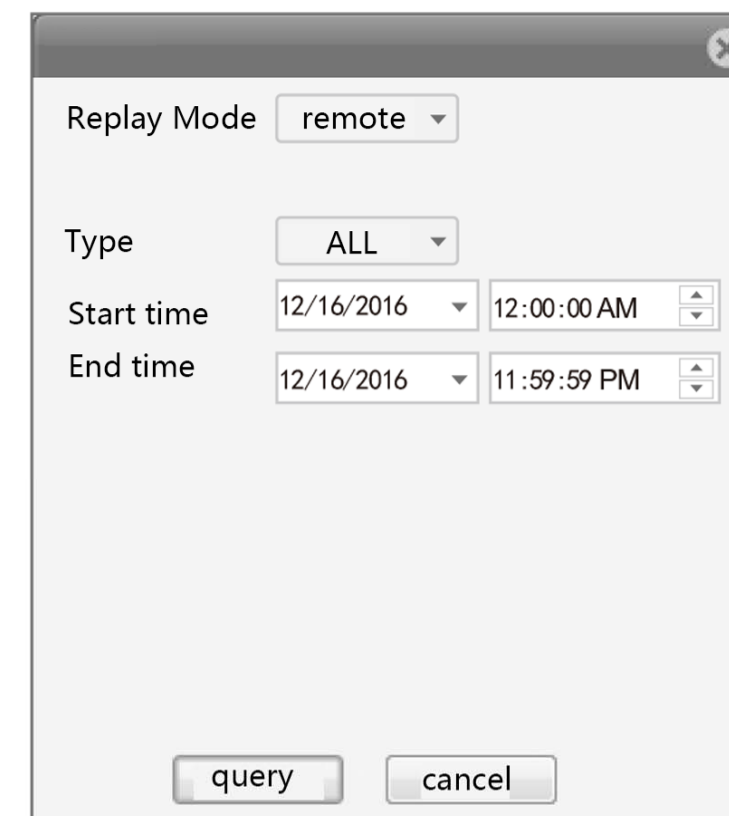


6 Record Setting

Click [main menu] -> [Record function] -> [Setting], the interface is as follows:



7 Replay



8 Services and software

In order to facilitate the use of users, we have developed a computer client, mobile client, cloud services and other ancillary services and software to achieve video viewing and manage.



VMS Client

Log on to the official website of 『service support』 -> 『Download Center』 -> 『supporting software download』 -> 『PC software』 -> 『VMS』 download the latest version of the video management system 『VMS』.



Mobile monitor

Scan the QR code on the package, download [JFeye] application. Apple user login APP Store, search keywords [JFeye], download and install.



Cloud platform

Login cloud service website: cloud.jufenginfo.com

Science & Technology.
Make Life Better.



Hotline : 400-855-3199