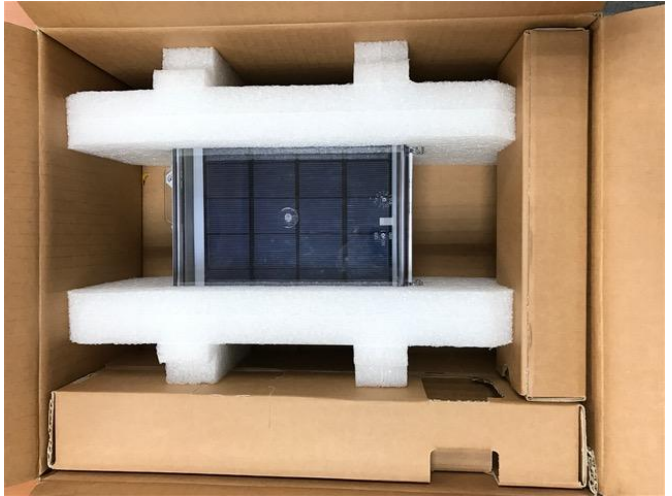


# Aquadlink Monitoring Device User's Manual

**contents**

1	Packaging Appearance.....	2
2	Product .....	3
3	Installation Notes.....	5
4	External antenna installation instruction and applicable antennas.....	6
5	Federal Communication Commission Interference Statement.....	8

## 1 Packaging Appearance



## 2 Product

### Host



QAM300-DE-S0W-001

Aquadlink monitoring device

Model NO. : QAM300-DE-S0W-001

Product Spec.

Solar cell panel : 5V/4.2W

Battery : 3.2V/12AH

Size : 220mmX230mmX100mm

Communication interface : 802.11a/b/g/n

Sensor interface : RS485 with 5V supply

Case material : PC

### Extension cord



1P to 3P extension cord(Female to Female)

Sensors



pH sensor



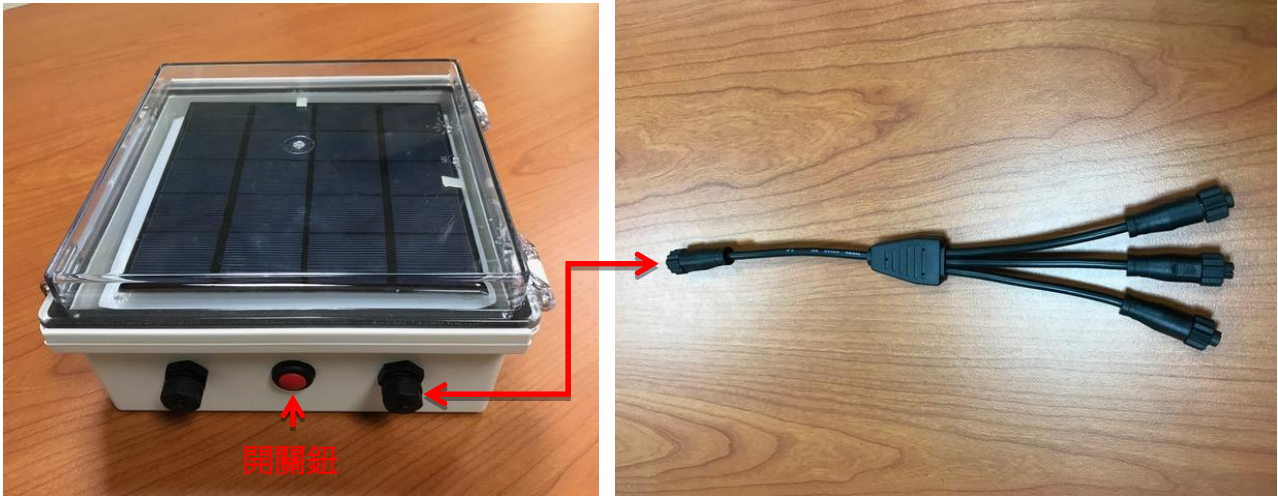
DO sensor



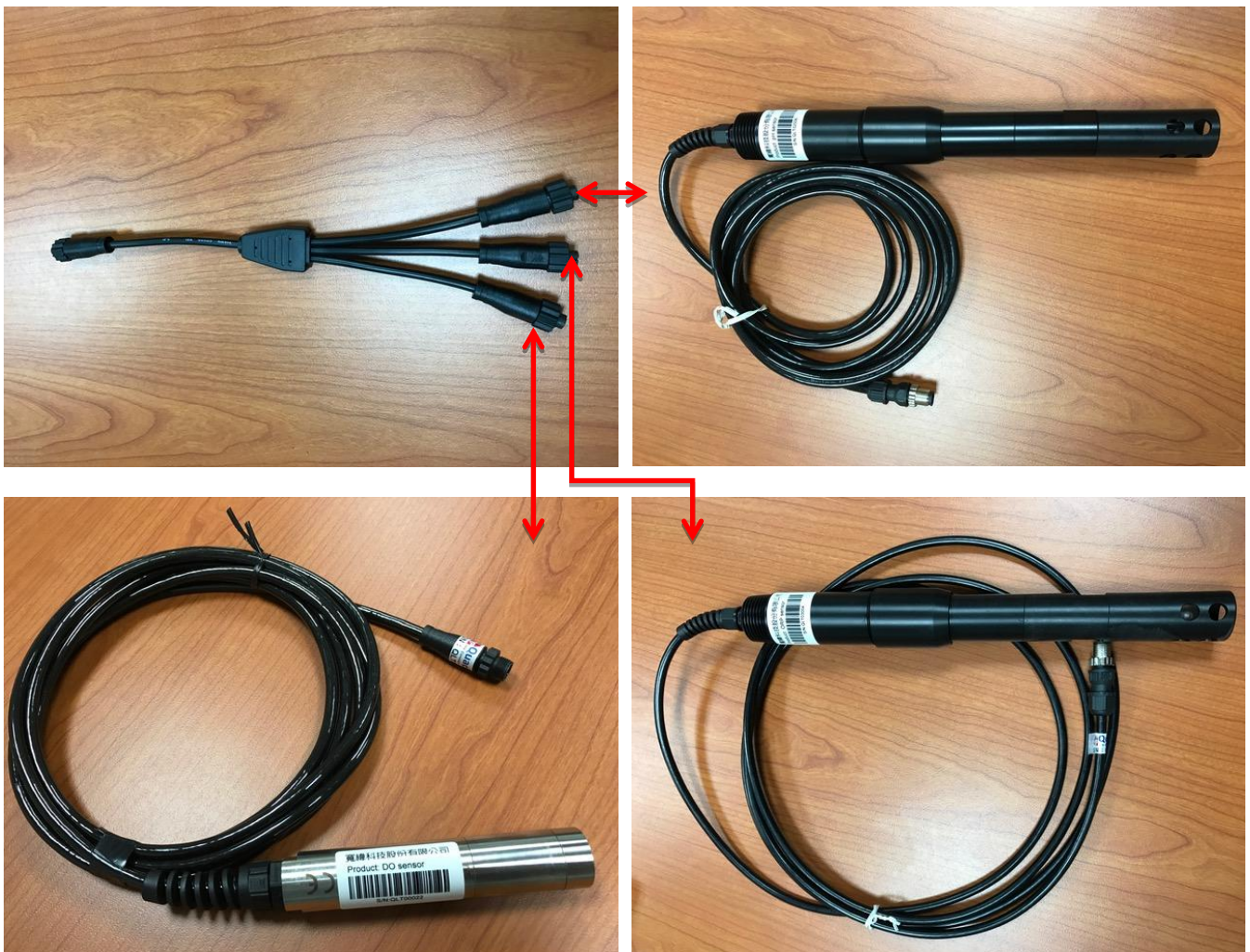
ORP sensor

### 3 Installation Notes

First you connect 1P to 3P extension cord to the QAM300DE.

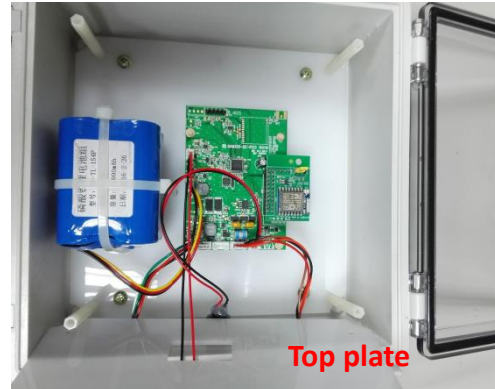
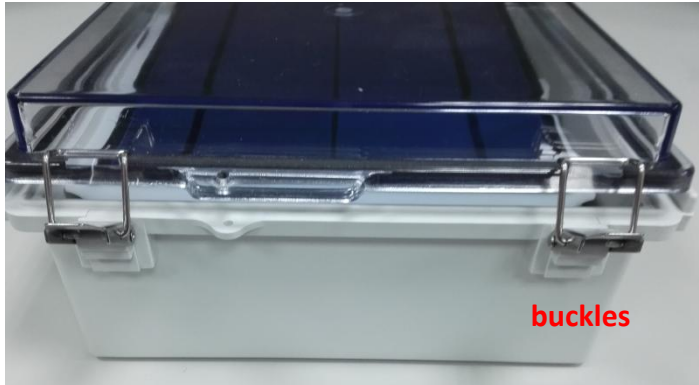


Then you lock the pH sensor, DO sensor, ORP sensors and push the red start button.

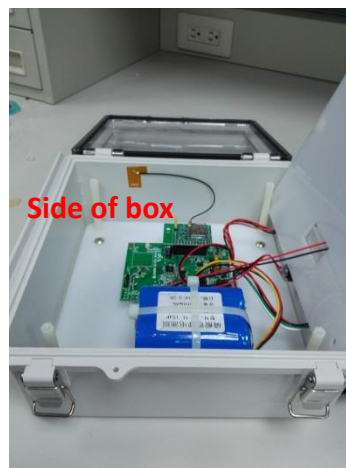
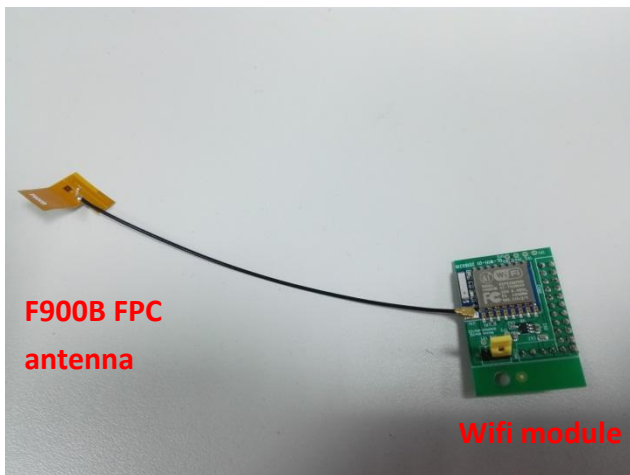


#### 4 External antenna installation instruction and applicable antennas

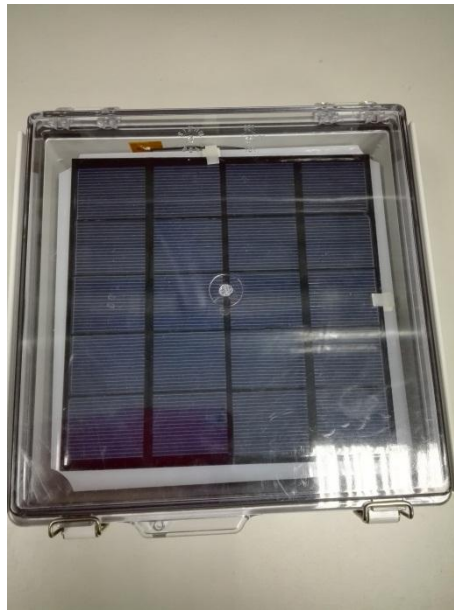
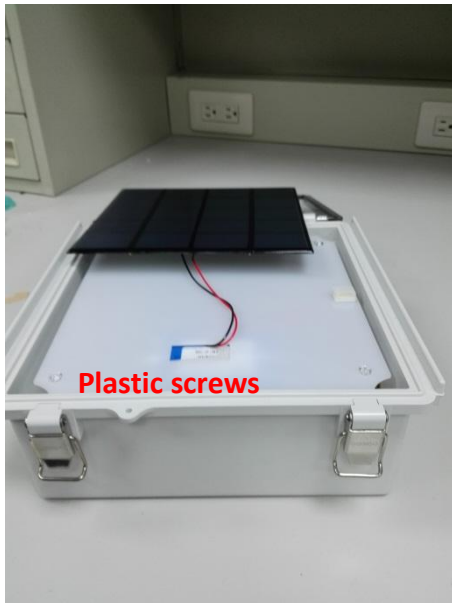
First you unlock the buckles and remove the top plate.



Second you take the wifi module down and lock the external antenna via i-pex connector. Then you paste the fpc antenna on the side of box and plug in the wifi module with the pin headers.



Finally you lock the plastic screws with the top plate and lock the buckles.



Applicable antennas

Antenna NO.	Model	Antenna Net Gain (dBi)	Frequency Range (GHz)	Antenna Type	Connector Type	Cable Length (mm)
1	F900B	-9.01	2.4~2.4835	PIFA	I-pex (MHF)	130
2	NA	-21.1	2.4~2.4835	Chip	NA	NA



## 5 Federal Communication Commission Interference Statement

This device complies with Part 15 of the FCC Rules. Operation is subject to the following two conditions: (1) This device may not cause harmful interference, and (2) this device must accept any interference received, including interference that may cause undesired operation.

This equipment has been tested and found to comply with the limits for a Class B digital device, pursuant to Part 15 of the FCC Rules. These limits are designed to provide reasonable protection against harmful interference in a residential installation. This equipment generates, uses and can radiate radio frequency energy and, if not installed and used in accordance with the instructions, may cause harmful interference to radio communications. However, there is no guarantee that interference will not occur in a particular installation. If this equipment does cause harmful interference to radio or television reception, which can be determined by turning the equipment off and on, the user is encouraged to try to correct the interference by one of the following measures:

- Reorient or relocate the receiving antenna.
- Increase the separation between the equipment and receiver.
- Connect the equipment into an outlet on a circuit different from that to which the receiver is connected.
- Consult the dealer or an experienced radio/TV technician for help.

FCC Caution: Any changes or modifications not expressly approved by the party responsible for compliance could void the user's authority to operate this equipment.

This transmitter must not be co-located or operating in conjunction with any other antenna or transmitter.

**FOR MOBILE DEVICE USAGE (>20cm/low power)**

Radiation Exposure Statement:

This equipment complies with FCC radiation exposure limits set forth for an uncontrolled environment. This equipment should be installed and operated with minimum distance 20cm between the radiator & your body.

**FOR COUNTRY CODE SELECTION USAGE (WLAN DEVICES)**

Note: The country code selection is for non-US model only and is not available to all US model. Per FCC regulation, all WiFi product marketed in US must fixed to US operation channels only.