

|  |                                  |
|--|----------------------------------|
|  | <h1>Technical Documentation</h1> |
|--|----------------------------------|

**PRD\_7150200A Internal Photos**

|               |                    |
|---------------|--------------------|
| <b>FCC ID</b> | <b>2AKUFSSTA30</b> |
|---------------|--------------------|

**Publication History**

| <b>Version</b> | <b>Date</b>  | <b>Modification description</b> |
|----------------|--------------|---------------------------------|
| 01             | July 6, 2021 | Creation of the document        |

# Technical Documentation

## Internal Photos



PRD\_7150200A integrated in the PF48 Helmer.

Doors of the PC4200 open

# Technical Documentation

## Internal Photos



PRD\_7150200A without drawer

# Technical Documentation

## Internal Photos



PRD\_7150200A without drawer, satellites, and front device

# Technical Documentation

## Internal Photos



Satellite top



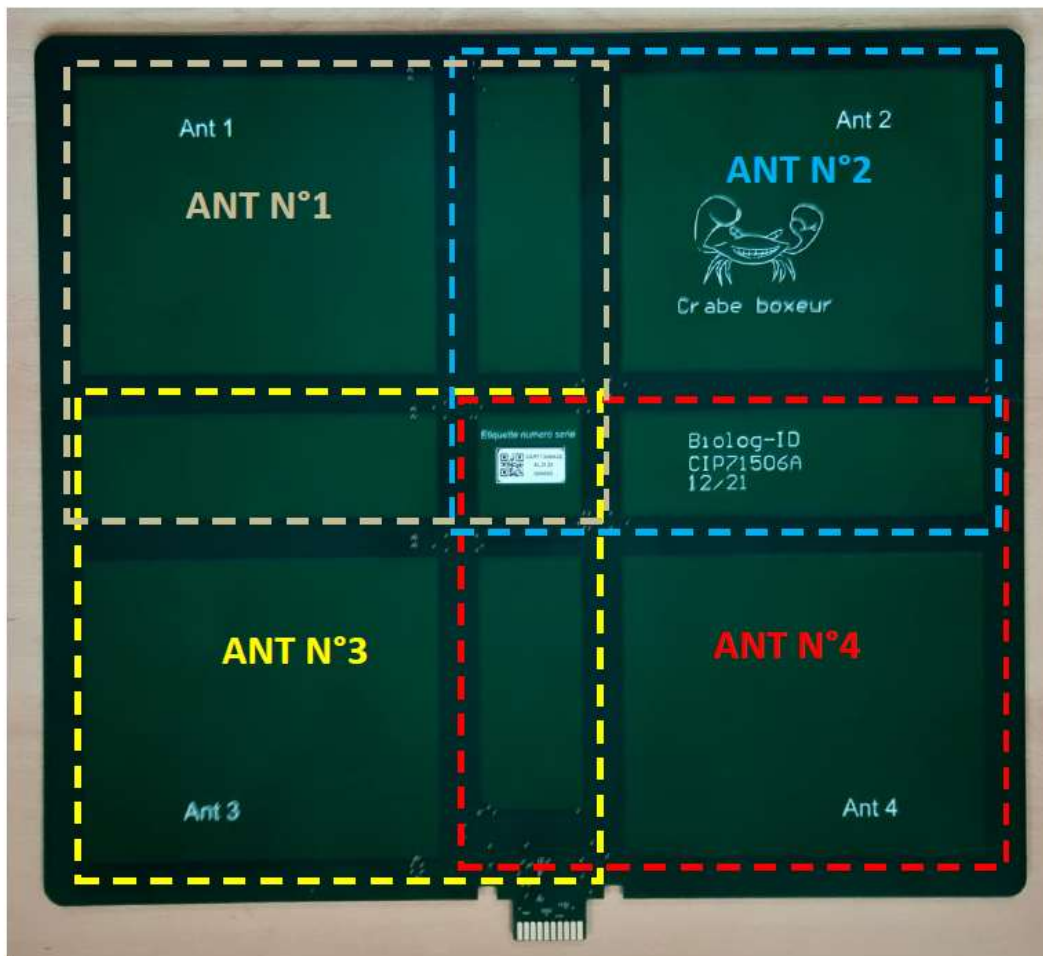
Satellite bottom without lexan (plastic adhesive)

Satellite

# Technical Documentation

## Internal Photos

Representation of the 4 antennas on the satellite

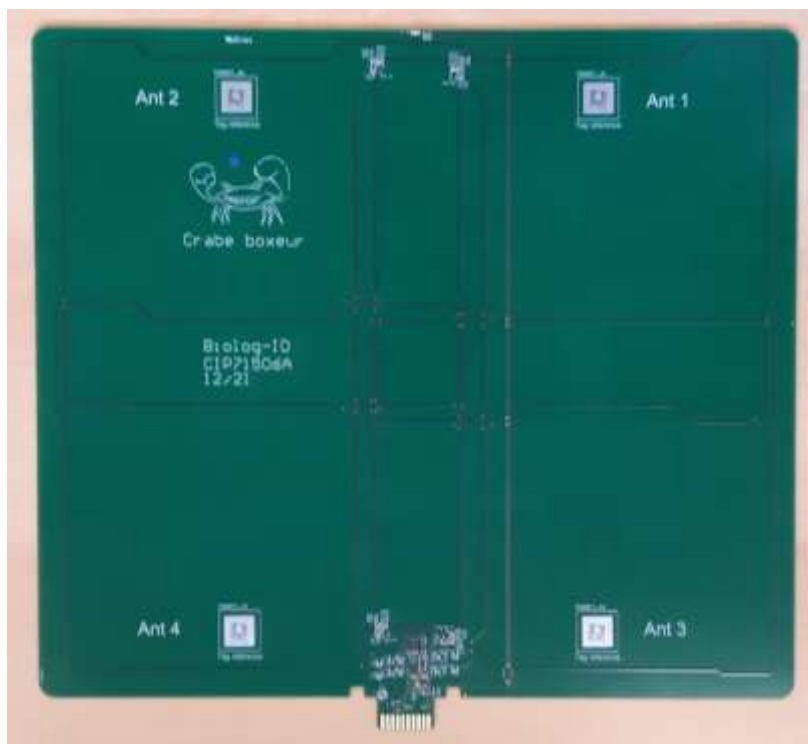


Central Board: CAR\_71506A  
& CAR\_71506B

Satellite

# Technical Documentation

## Internal Photos



CAR 71506A (antenna board) Top and Bottom

# Technical Documentation

## Internal Photos

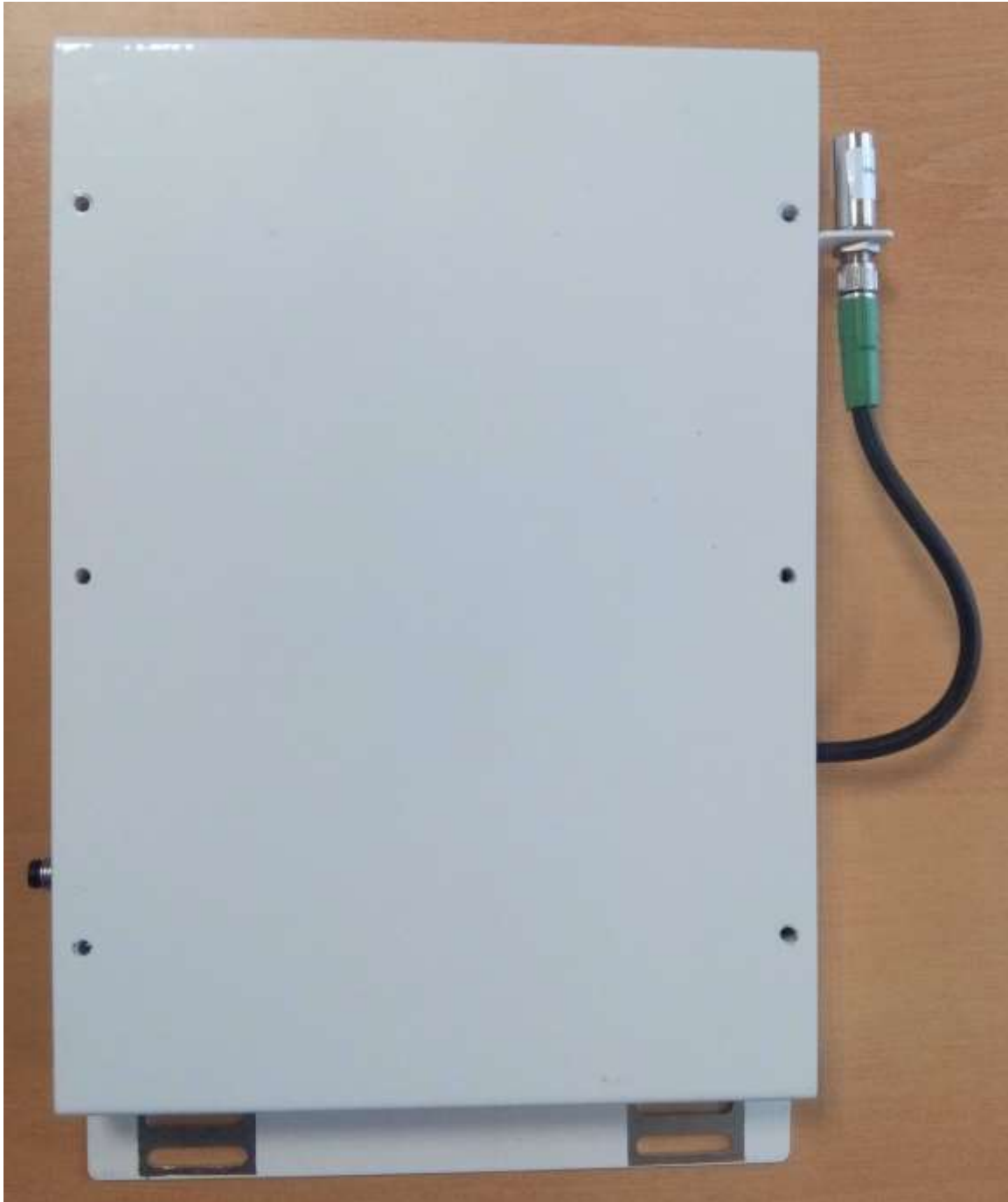


CAR71502A in Box bottom view



# Technical Documentation

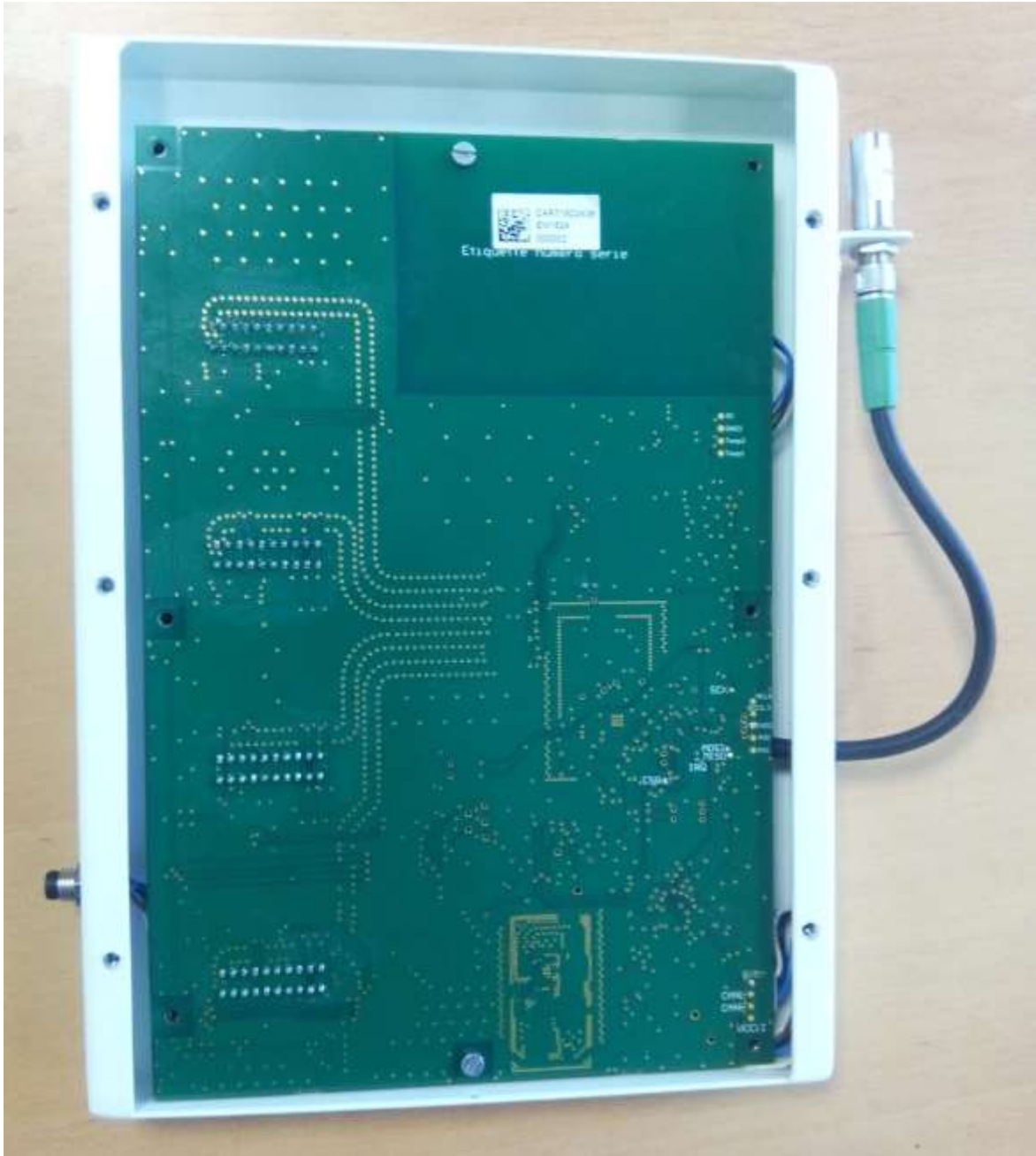
## Internal Photos



CAR71502A in Box top view

# Technical Documentation

## Internal Photos



CAR71502A in Box top view

# Technical Documentation

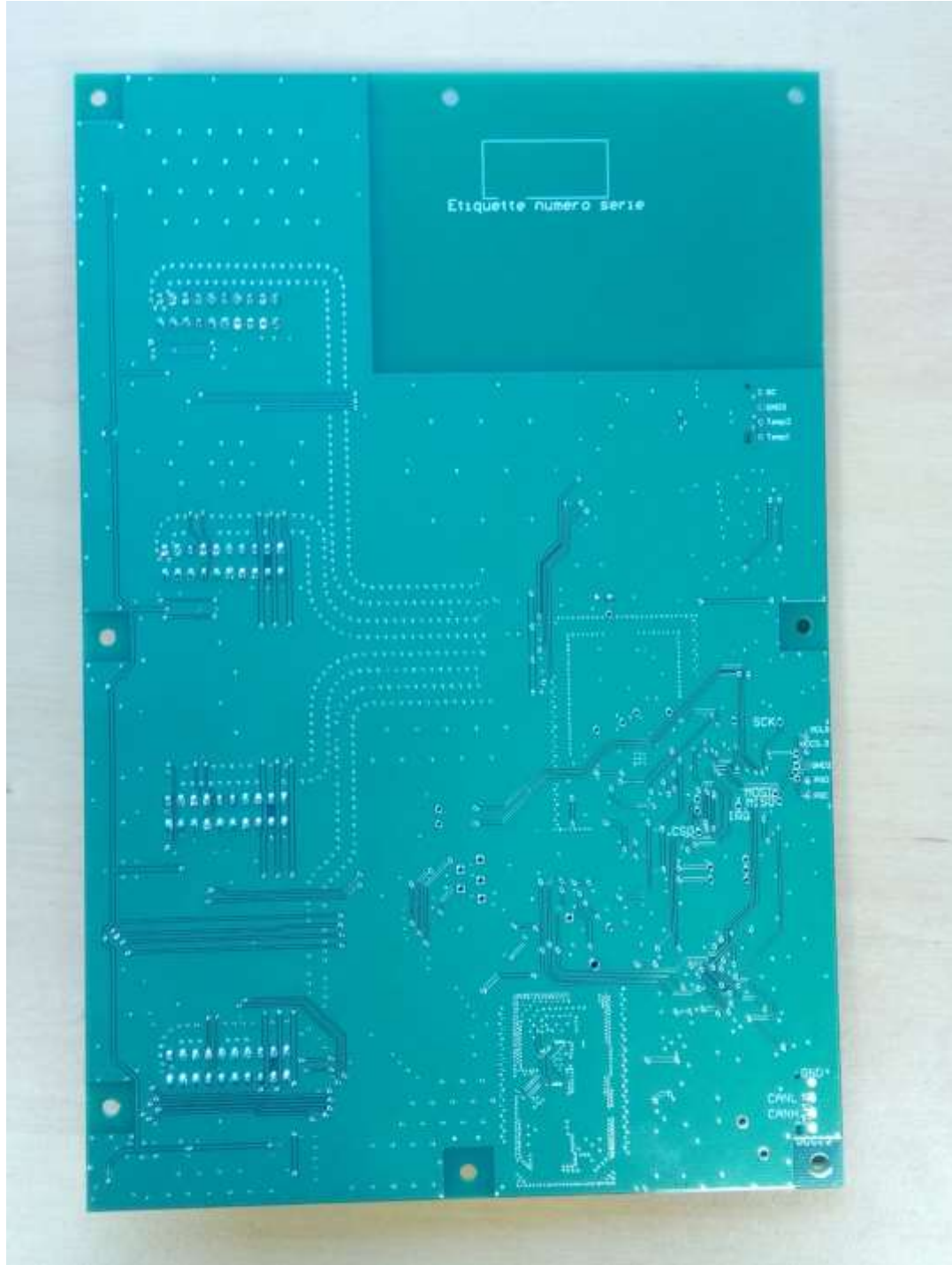
## Internal Photos



CAR 715 02A06 (RFID) Top

# Technical Documentation

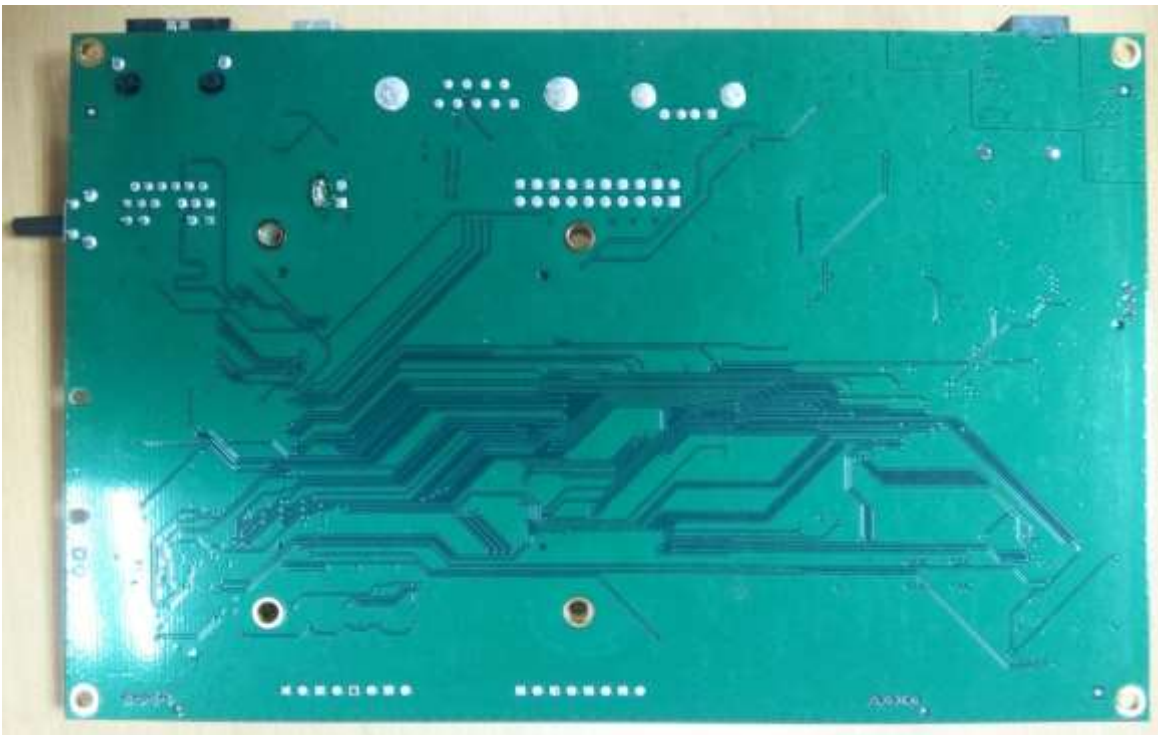
## Internal Photos



CAR 715 02A06 (RFID) Bottom

# Technical Documentation

## Internal Photos



CAR\_71301A Top and bottom