

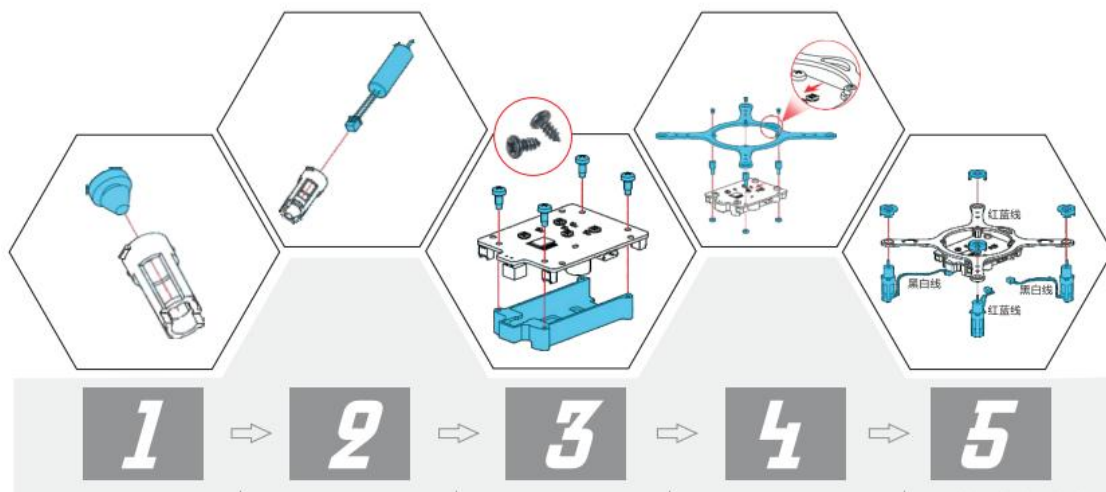
# LiteBee user manual

## Part 1: Detailed list

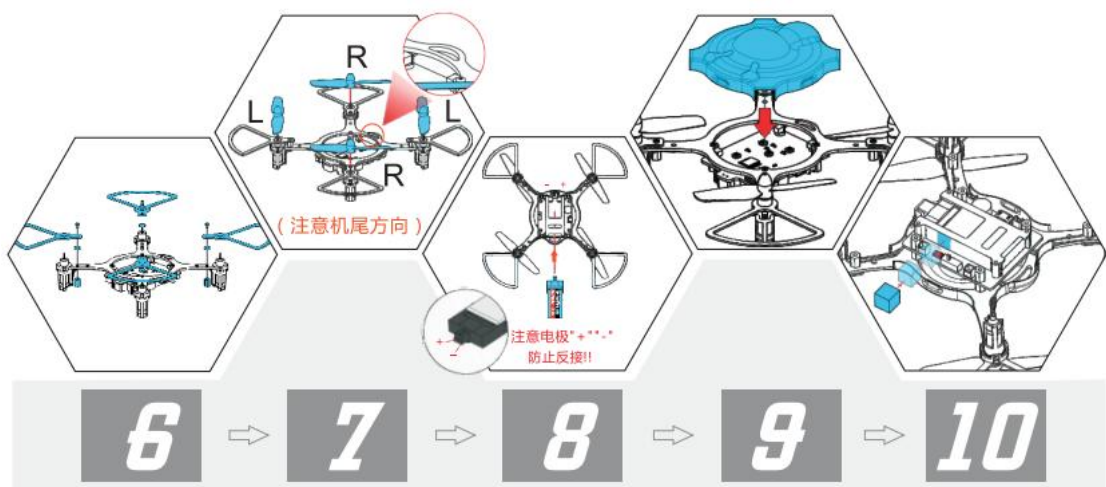


- 1 x Flight Controller
- 1 x RC Controller
- 1 x High-impact Carbon Fiber Frame
- 3 x Paintable Cover
- 1 x High C-Rate Lipo Battery
- 6 x 720 Brush motors
- 4 x ABS Propeller of high quality
- 6 x Self-lock motor base
- 1 x USB Cable
- 1 x Cross Screwdriver
- 1 x Kit of Screw and Aluminum Column
- 1 x charging cable
- 1 x Manual

## Part 2: Assembly process



1. Assemble bumper
2. Insert motor into Self-lock motor base, please note power line should through motor low side.
3. Flight controller power connector should be superimposed with battery bulge part, and use cross screwdriver to fix battery compartment by 4pcs self-tapping screws.
4. Use screws and nuts to fix flight controller and carbon fiber frame.  
(Remark: please note that correspondence between flight controller and carbon fiber frame)
5. Use motor through round hole of carbon fiber frame and make motor cover locked with self-lock motor base. Please note position and color of motors.



6. Use screws and nuts to fix propeller protection cover, as picture 6.

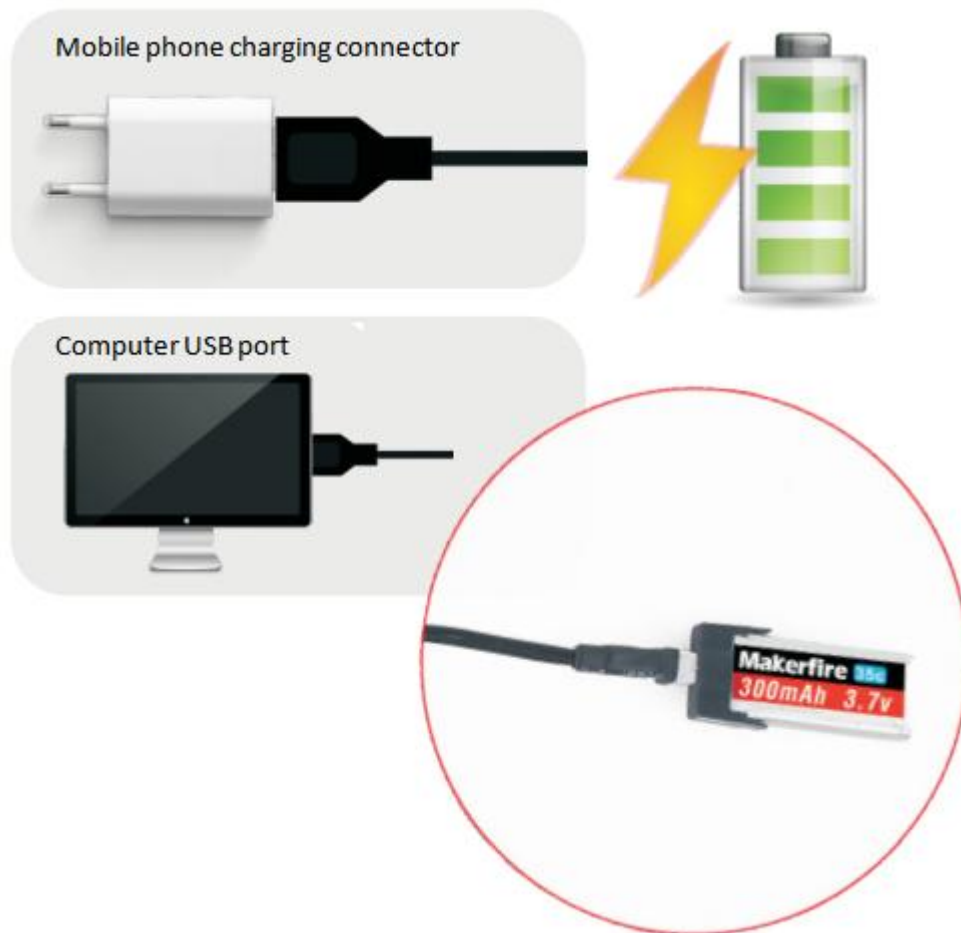
7. Assemble R & L ABS propeller according to corresponding position of motors.  
(Remark: please note direction of drone tail )
8. Insert battery into battery cover according to socket direction.
9. Assemble paintable cover to carbon fiber frame
10. Fix sponge on the battery cover by double-sided adhesive tape  
(Remark: please don't glue on the metal barometer)

### Part 3: Remote controller frequency pairing operation



1. Open remote controller, push right joystick into top right corner, press button K1 for 1S to 2S, then three light (white/blue/red) will be at twinkling status.
2. Open drone power switch, please pay attention to blue light's twinkling status and twink two times more than other red/white light. it prove frequency pairing success.
3. Restart remote controller.

## Part 4: Battery charging



### Two battery charging method:

1. Use professional USB Lipo battery charging cable
2. Use mobile phone charging connector or computer USB port to charge.

### Charging status indicator light:

Quick flashes: battery at high current charging status

Slow flashes: battery at low current charging status

Indicator light: charge complete.

Remarque:

In order to ensure safety, please use good quality battery charger.

Forbid no people watch during battery charging.

Please take down battery when charge complete.

**FCC Statement**

This device complies with part 15 of the FCC Rules. Operation is subject to the following two conditions:

(1) This device may not cause harmful interference, and (2) this device must accept any interference received, including interference that may cause undesired operation.

Any Changes or modifications not expressly approved by the party responsible for compliance could void the user's authority to operate the equipment.

Note: This equipment has been tested and found to comply with the limits for a Class B digital device, pursuant to part 15 of the FCC Rules. These limits are designed to provide reasonable protection against harmful interference in a residential installation. This equipment generates uses and can radiate radio frequency energy and, if not installed and used in accordance with the instructions, may cause harmful interference to radio communications. However, there is no guarantee that interference will not occur in a particular installation. If this equipment does cause harmful interference to radio or television reception, equipment generates, uses and can radiate radio frequency energy and, if not installed and used in accordance with the instructions, may cause harmful interference to radio communications. However, there is no guarantee that interference will not occur in a particular installation. If this equipment does cause harmful interference to radio or television reception,

- Reorient or relocate the receiving antenna.
- Increase the separation between the equipment and receiver.
- Connect the equipment into an outlet on a circuit different from that to which the receiver is connected.
- Consult the dealer or an experienced radio/TV technician for help.

**FCC RF Radiation Exposure Statement**

The device has been evaluated to meet general RF exposure requirement. The device can be used in portable exposure condition without restriction.