

2.4GWIFI

DUT: TU43

Communication System: 802.11b ; Frequency: 2437 MHz;Duty Cycle: 1:1

Medium: H2450 Medium parameters used: $f = 2437$ MHz; $\sigma = 1.776$ S/m; $\epsilon_r = 40.424$; $\rho = 1000$ kg/m³

Ambient Temperature : 22.6 °C; Liquid Temperature : 22.3 °C

DASY5 Configuration:

- Probe: EX3DV4 - SN3970; ConvF(8.06, 8.06, 8.06); Calibrated: 2023/5/17;
- Sensor-Surface: 4mm (Mechanical Surface Detection)
- Electronics: DAE4 Sn1418; Calibrated: 2023/4/25
- Phantom: ELI v5.0; Type: QDOVA002AA; Serial: TP:1231
- Measurement SW: DASY52, Version 52.8 (7); SEMCAD X Version 14.6.10 (7164)

Front/Area Scan (8x13x1): Measurement grid: dx=15mm, dy=15mm

Maximum value of SAR (measured) = 0.0798 W/kg

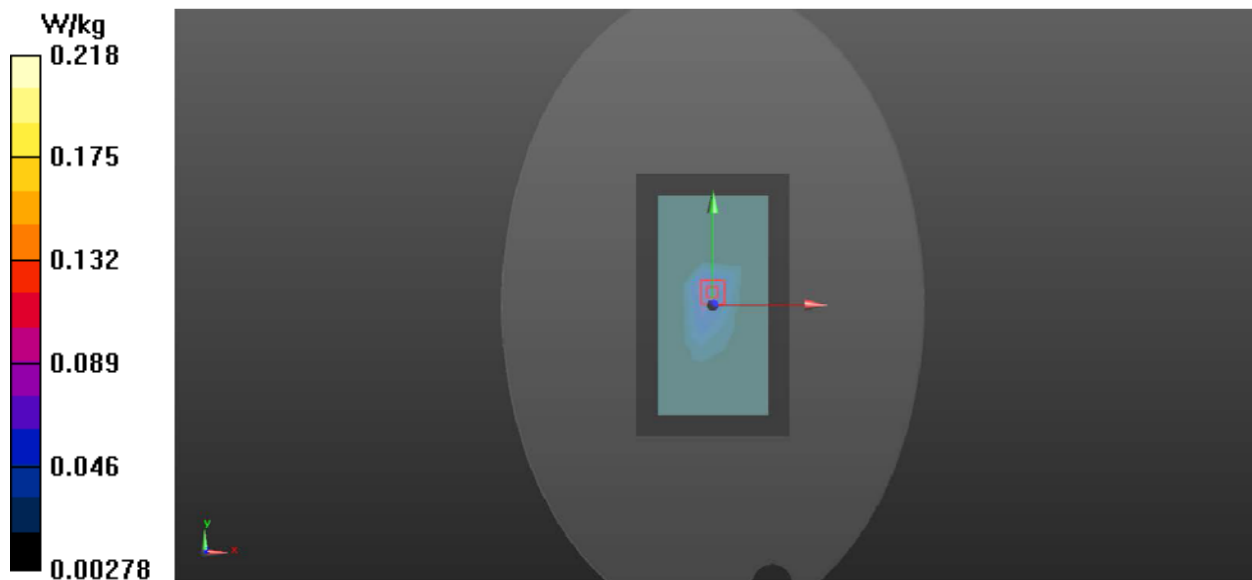
Front/Zoom Scan (7x7x7)/Cube 0: Measurement grid: dx=5mm, dy=5mm, dz=5mm

Reference Value = 8.381 V/m; Power Drift = 0.07 dB

Peak SAR (extrapolated) = 0.446 W/kg

SAR(1 g) = 0.195 W/kg; SAR(10 g) = 0.079 W/kg

Maximum value of SAR (measured) = 0.218 W/kg



file:///D:/Project/Report%20Directory/2023/10/ENS2308110214W010%20GAODE%20TL430%20FCC/2.4GWIFI-1/2.4GWIFI-1.htm[2023/10/12 14:59:54]