

System Check_H5250

DUT: Dipole 5GHzV2;Type:D5GHzV2; SN:1169

Communication System: CW; Frequency: 5250 MHz;Duty Cycle: 1:1

Medium: H5G Medium parameters used: $f = 5250$ MHz; $\sigma = 4.69$ S/m; $\epsilon_r = 36.84$; $\rho = 1000$ kg/m³

Ambient Temperature : 22.2 °C; Liquid Temperature : 21.9 °C

DASY5 Configuration:

- Probe: EX3DV4 - SN3970; ConvF(5.85, 5.85, 5.85); Calibrated: 2023/5/17;
- Sensor-Surface: 2mm (Mechanical Surface Detection)
- Electronics: DAE4 Sn1418; Calibrated: 2023/4/25
- Phantom: ELI v5.0; Type: QDOVA002AA; Serial: TP:1231
- Measurement SW: DASY52, Version 52.8 (7); SEMCAD X Version 14.6.10 (7164)

Pin=100mW/Area Scan (7x9x1): Interpolated grid: dx=10.00 mm, dy=10.00 mm

Maximum value of SAR (interpolated) = 21.7 W/kg

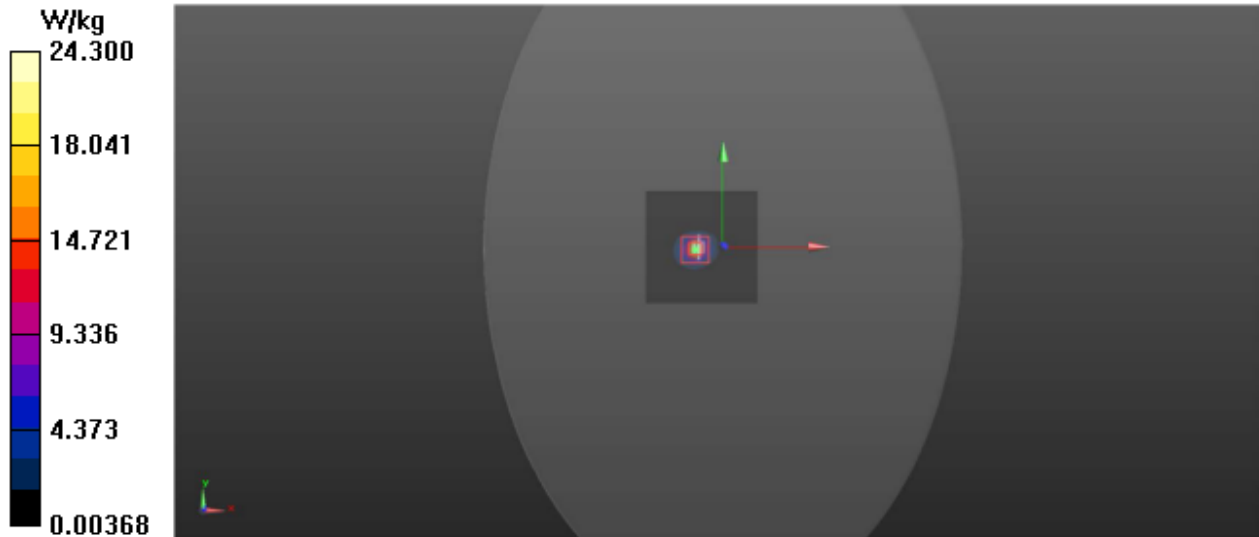
Pin=100mW/Zoom Scan (8x8x13)/Cube 0: Measurement grid: dx=4mm, dy=4mm, dz=2mm

Reference Value = 57.167 V/m; Power Drift = 0.19 dB

Peak SAR (extrapolated) = 35.8 W/kg

SAR(1 g) = 7.69W/kg; SAR(10 g) = 2.17 W/kg

Maximum value of SAR (measured) = 24.3 W/kg



System Check_H5750

DUT: Dipole 5GHzV2;Type:D5GHzV2; SN:1169

Communication System: CW; Frequency: 5750 MHz;Duty Cycle: 1:1

Medium: H5G Medium parameters used: $f = 5750$ MHz; $\sigma = 5.392$ S/m; $\epsilon_r = 35.619$; $\rho = 1000$ kg/m³

Ambient Temperature : 22.5 °C; Liquid Temperature : 22.2 °C

DASY5 Configuration:

- Probe: EX3DV4 - SN3970; ConvF(5.2, 5.2, 5.2); Calibrated: 2023/5/17;
- Sensor-Surface: 2mm (Mechanical Surface Detection)
- Electronics: DAE4 Sn1418; Calibrated: 2023/4/25
- Phantom: ELI v5.0; Type: QDOVA002AA; Serial: TP:1231
- Measurement SW: DASY52, Version 52.8 (7); SEMCAD X Version 14.6.10 (7164)

Pin=100mW/Area Scan (7x9x1): Interpolated grid: dx=10.00 mm, dy=10.00 mm

Maximum value of SAR (interpolated) = 20.6 W/kg

Pin=100mW/Zoom Scan (8x8x13)/Cube 0: Measurement grid: dx=4mm, dy=4mm, dz=2mm

Reference Value = 50.784 V/m; Power Drift = 0.05 dB

Peak SAR (extrapolated) = 35.0 W/kg

SAR(1 g) = 7.53 W/kg; SAR(10 g) = 2.12 W/kg

Maximum value of SAR (measured) = 21.5 W/kg

