



COMMATECH

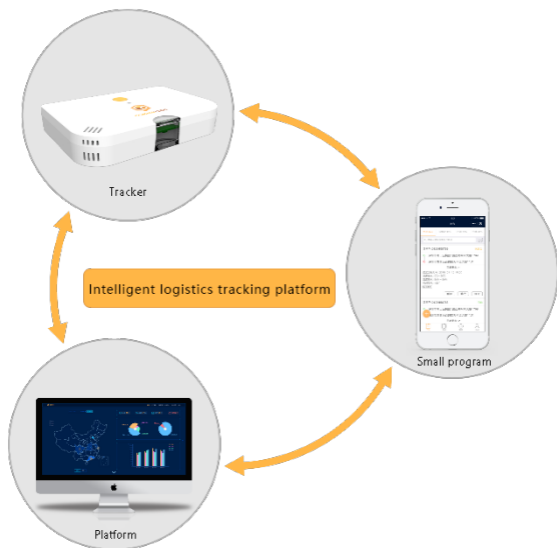
Smart logistics traceability platform user guide **Smart Tracker**

Introduction

Smart Tracker is the latest logistics traceability equipment of Shenzhen comma Technology Co., Ltd. The device is developed on the basis of GPRS technology, and integrates sensor modules such as temperature, humidity, light perception, vibration and GPS/ Beidou positioning module. It is suitable for the field of warehousing and logistics such as constant temperature warehouse environmental monitoring, zero load goods

tracing, cold chain transportation, medical transportation and so on. Through the seamless docking of equipment and comma intelligence logistics traceability platform, the real-time and full range tracing of the position of order / vehicle / goods in the logistics field, environment state, unbox state, delivery time and so on is realized.

Shenzhen comma technology Co., Ltd.
info@smartcomma.com

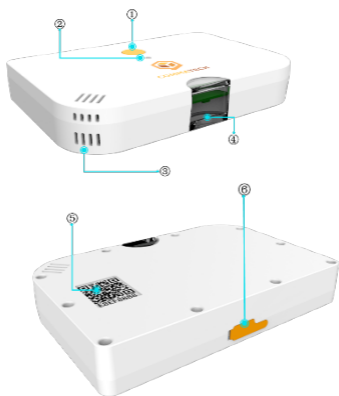


一、About equipment

Smart Tracker is a multi-functional logistics traceability equipment developed based on GPRS transmission technology. The equipment integrated temperature, humidity, light sense, vibration and other sensing functions and GPS/ Beidou dual mode positioning function, suitable for zero load goods traceability, vehicle tracing, cold chain logistics traceability, medical logistics traceability and many other logistics scenes.

Smart Tracker can easily monitor the real-time position of goods and vehicles and all kinds of sensor data through the docking with the intelligent logistics traceability platform, so as to achieve efficient and visual logistics control. At the same time, the intelligent logistics traceability platform provides Open API, which can be connected with the enterprise's own WMS, TMS and other systems.

1. Introduction and functional description of the appearance



Functional interpretation of various parts of equipment

Mark	Name	Meaning
①	Power query button	Press to check the power of the device
②	Electric indicator lamp	It is used to indicate the power of the device. Explain in detail the meaning of the device indicator.
③	Temperature and Humidity sensor	For collecting environmental temperature and humidity information
④	Light sensor	To collect light sense information
⑤	Equipment SN	Unique identification code for equipment
⑥	USB interface	For equipment updating and equipment charging

Interpretation of the meaning of equipment indicator

LED	Meaning
Green	battery level > 70%
Yellow	$70\% \geq \text{battery level} \geq 30\%$
RED	battery level $\leq 30\%$, need to be recharged

2、Charging description

Connect to the Smart Tracker USB port with standard Micro USB interface and connect the charger to charge.

Interpretation of the meaning of charging indicator

Equipment	In charging	full
Smart Tracker	Red LED on	Green LED on

3、Product parameters

Smart Tracker Product parameters

Product name	Smart Tracker
Dimension	120×80×20mm
Weight	186g
Standby Power	20 uA type
Battery	3800mAh Polymer cryogenic battery
Endurance time	90days(15 minutes upload interval)
Location interval	Minimum 1 minutes, remotely configured
positioning accuracy	GNSS accuracy 1-10m , base station positioning accuracy depends on the density of the base station
Protection grade	IP54 level
Fall grade	Free fall of 1.5 meters of cement ground
operating temperature	-30°C ~ +60°C

4、 Packing detail

Name	Quantity
Smart Tracker	1
Certificate	1
Warranty card	1
User guide	1

二、 On the traceability platform of intelligent logistics

Smart Tracker needs to be used with the smart logistics traceability platform. You need to use the account and password login platform I opened for you to experience a complete logistics traceability service. If you do not have an account, please contact our salesperson or call our telephone number to open account for you.

Intelligent logistics traceability platform web site : <https://www.56nbiot.com>

Smart logistics traceability platform use Handbook URL link:

<https://www.56nbiot.com/usermanual.pdf>

Or please scan the below two-dimensional code to get:



三、 About API

The intelligent logistics traceability platform provides standard API interface for users to connect retrospective functions to the enterprise own information system. If you need relevant information and technical support, please contact our sales staff.

四、 Maintenance service

- 1、 Smart Tracker mainframe is free for 1 years. Human factors and non natural disasters are excepted.
- 2、 The warranty period for batteries and other accessories is half a year.
- 3、 Maintenance cycle: within 15 working days after receiving the equipment, the repair is completed and sent back (excluding postage).

Disclaimer: :

Thank you for choosing Smart Tracker and smart logistics traceability platform. Please be sure to carefully read all the contents of this guide before using this product to ensure that you are fully aware of how to use this product in a safe, reasonable and effective way. After reading, please keep this guide properly for the convenience of inspection next time.

Do not dismantle the terminal by yourself or tear the sealing label on the terminal. Otherwise, we will not guarantee or replace the equipment.

The pictures in this guide are for reference only, subject to change without notice. Please take the actual product as the criterion. For the improvement and renewal of this product, we reserve the right to change the guide without notice at any time.

All the information contained in this guide is protected by copyright. We reserve all rights, without any written permission, and no unit or individual shall, in any way or reason, carry out any form of excerpt, copy, or binding with other products in any form or part of this document.

The products described in this guide may include software that is entitled to copyright by our company or third parties. Unless the relevant rights holder permits, any unit or individual can not copy, distribute, modify, excerpt, decompile, disassemble, decrypt, reverse engineering, lease, transfer in any form, in any form. And other violations of software copyright.

We have the final interpretation of this statement.

FCC WARNING

This device complies with part 15 of the FCC Rules. Operation is subject to the following two conditions: (1) this device may not cause harmful

interference, and (2) this device must accept any interference received, including interference that may cause undesired operation.

Any changes or modifications not expressly approved by the party responsible for compliance

could void the user's authority to operate the equipment.

NOTE: This equipment has been tested and found to comply with the limits for a Class B digital device, pursuant to Part 15 of the FCC Rules. These limits are designed to provide reasonable protection against harmful interference in a residential installation. This equipment generates, uses and can radiate radio frequency energy and, if not installed and used in accordance with the instructions, may cause harmful interference to radio communications. However, there is no guarantee that interference will not occur in a particular installation.

If this equipment does cause harmful interference to radio or television reception,

which can be determined by turning the equipment off and on, the user is encouraged to try to correct the interference by one or more of the following measures:

- Reorient or relocate the receiving antenna.
- Increase the separation between the equipment and receiver.
- Connect the equipment into an outlet on a circuit different from that to which the receiver is connected.
- Consult the dealer or an experienced radio/TV technician for help.

To maintain compliance with FCC's RF Exposure guidelines, This equipment should be installed and operated with minimum distance between 20cm the radiator your body: Use only the supplied antenna.

FCC ID: 2AKTB-SMARTTRACKER

www.smartcomma.com



RoHS

