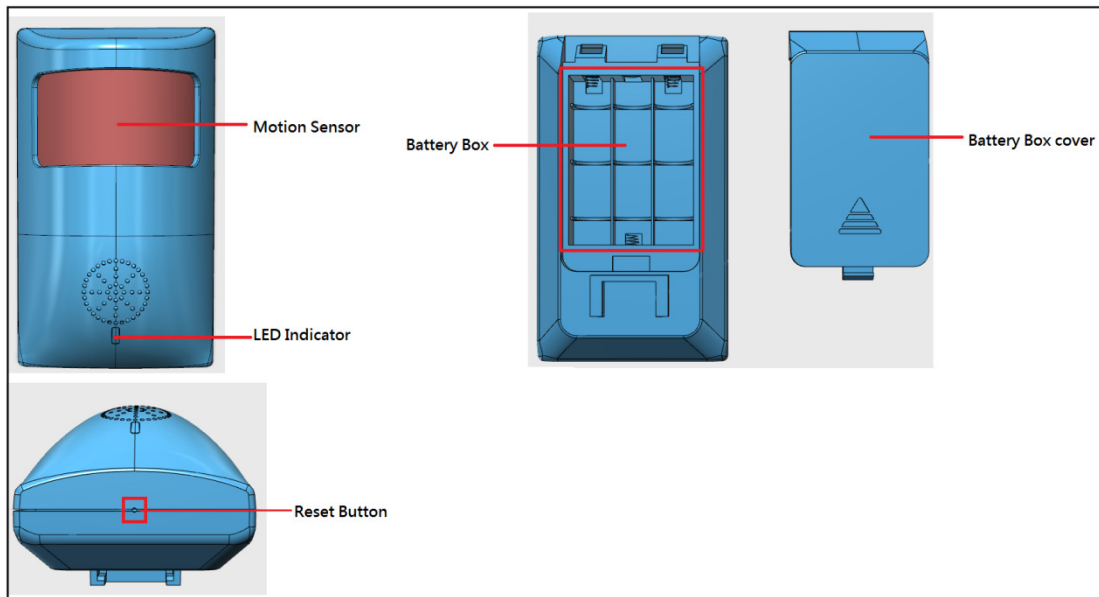


PIR-TH-01 User Manual



PIR sensor overview

App Setup

To install SmartiBlue app

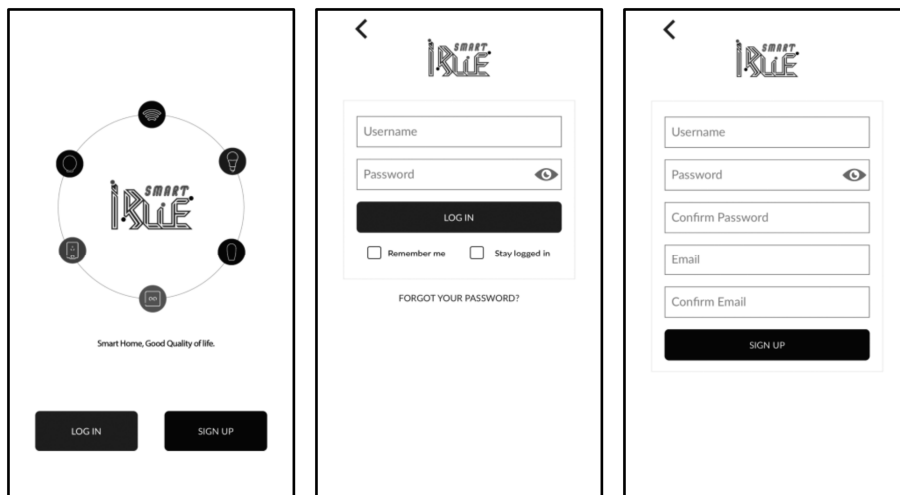


SmartiBlue
Smart iBlue Technology Limited

Step 1:

Download the SmartiBlue app from App Store[®] or Google Play[™].

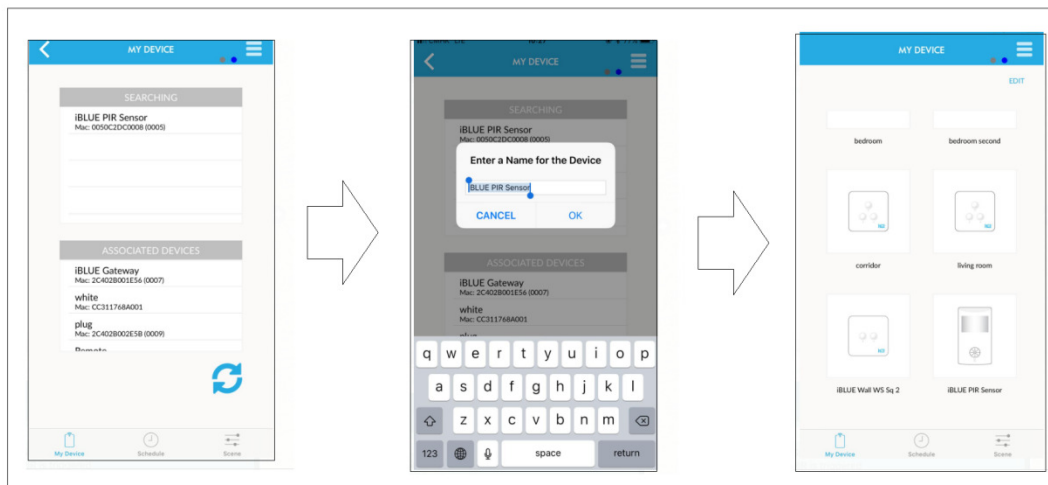
Step 2: Log into your SmartiBlue account, or sign up a new account by following the instruction in the app.



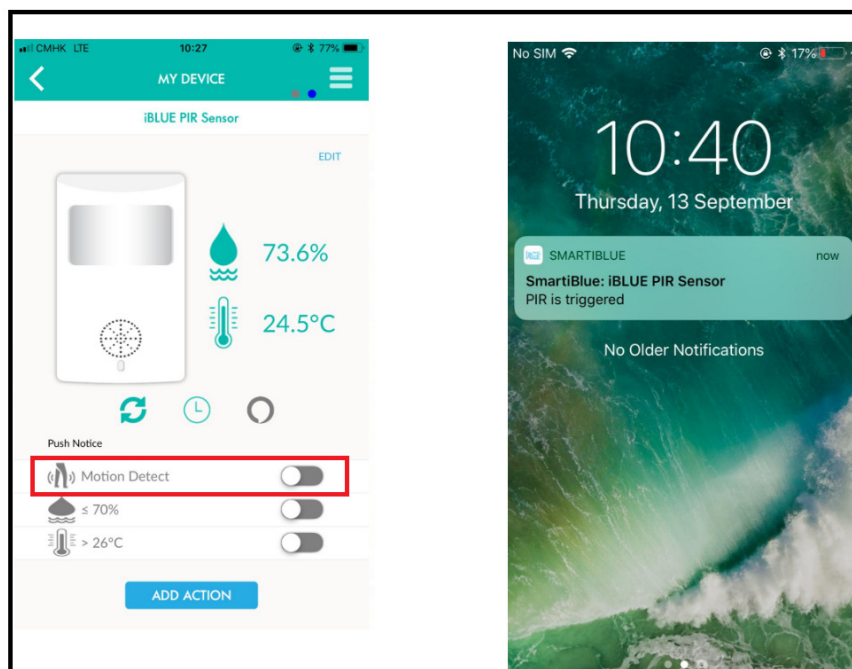
PIR install

Step 1: Insert 3xAAA battery to battery box

Step 2: The small LED indicator at the front will blink steadily, waiting to be associated with your mobile device.



Step3: Open the “SmartiBlue app” and complete the association process. The light becomes solid red when the sensor associated successfully. The notice would be popped out to indicate that the association process is finished.



Step4: Turn on the motion detect, a push notice will be provided if someone pass by the sensor.

PIR Specification

Model No: PIR-TH-01

Input: DC 4.5V by battery

Temperature: 0 to 40 (Operating), -20 to 65 (Storage) Humidity: 1

0% to 90% Non-condensing (Operating), 5% to 90% Non-condensing (Storage)

Operating frequency: 2402-2480MHz

Note

This device complies with part 15 of the FCC Rules. Operation is subject to the following two conditions:

(1) This device may not cause harmful interference, and (2) this device must accept any interference received, including interference that may cause undesired operation.

Note: This equipment has been tested and found to comply with the limits for a Class B digital device, pursuant to part 15 of the FCC Rules. These limits are designed to provide reasonable protection against harmful interference in a residential installation.

This equipment generates, uses and can radiate radio frequency energy and, if not installed and used in accordance with the instructions, may cause harmful interference to radio communications. However, there is no guarantee that interference will not occur in a particular installation. If this equipment does cause harmful interference to radio or television reception, which can be determined by turning the equipment off and on, the user is encouraged to try to correct the interference by one or more of the following measures:

- Reorient or relocate the receiving antenna.
- Increase the separation between the equipment and receiver.
- Connect the equipment into an outlet on a circuit different from that to which the receiver is connected.
- Consult the dealer or an experienced radio/TV technician for help.

Note: The Grantee is not responsible for any changes or modifications not expressly approved by the party responsible for compliance. such modifications could void the user's authority to operate the equipment.

To maintain compliance with FCC's RF exposure guidelines, this equipment should be installed and operated with a minimum distance of 20cm between the radiator and your body.