

# Universal Remote User Manual

## Safety

Please read all of the safety and operating instructions before using your device:

1. Do not open the device or attempt to repair or service it.
2. Use the device in a dry location, and avoid placing it in a humid environment.
3. Do not submerge the device in liquid or attempt to clean it with liquids or solvents.  
To clean the device, disconnect from the power and use a damp towel.
4. This device should only be used indoors.

## Specification

Model No: IRC-01

Input: DC 5V/1A

Temperature: 0°C to 40°C (Operating), -20°C to 65°C (Storage)

Humidity: 10% to 90% Non-condensing (Operating), 5% to 90% Non-condensing (Storage)

Operating frequency: 2400~2483.5MHz

Max. transmit power: -0.2dBm

## System Requirement

- An e-email account (required to register for Smart iBlue app)
- Mobile device and tablet with iOS 7.0 or above, Android 4.4 or above, Bluetooth 4.0 or above

## How to install Smart iBlue app

To find and install Smart iBlue app for iOS:

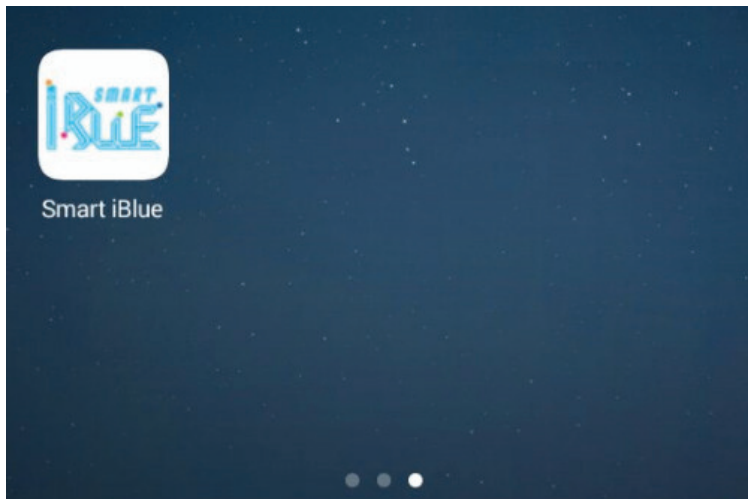
1. On your mobile device, open App Store.
2. Tap the Search icon.
3. Enter Smart iBlue in the search field.
4. Select Smart iBlue in the search results to go to the app page.
5. Follow the standard installation procedure.

The procedure to find and install Smart iBlue app for Android is similar

## App Instruction:

Step 1:

Download 'Smart iBlue' app from the App Store (iPhone, iPad, or iPod touch) or Google Play (Android). Once 'Smart iBlue' app is installed, launch the app.



Step 2:

Log into your 'Smart iBlue' account. If you don't have one, sign up for a free account by clicking-'Sign up'. Then follow the instruction to create account.

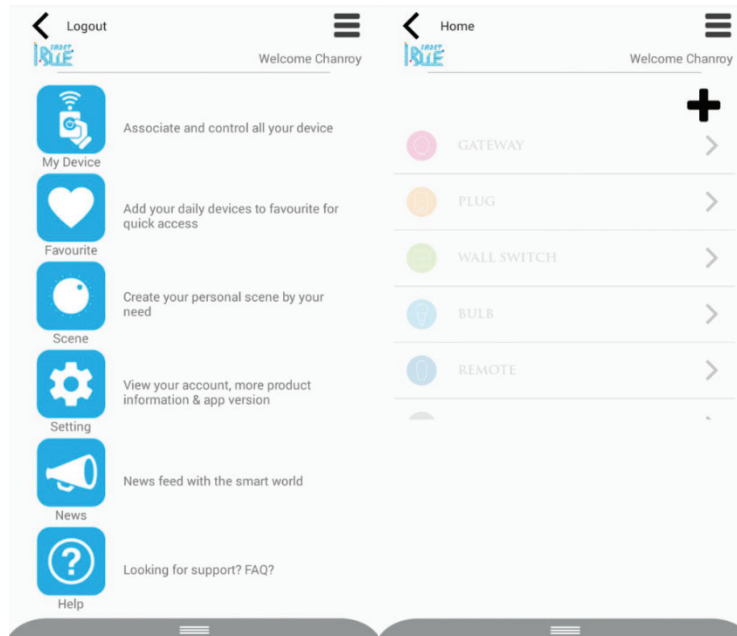


Step 3:

Plug the Universal Remote to power outlet via cable for power supply, the small LED light at the bottom will flash blue steadily, waiting to be associated with your device.

Step 4:

Select-‘My Device’, tap ‘+’ icon

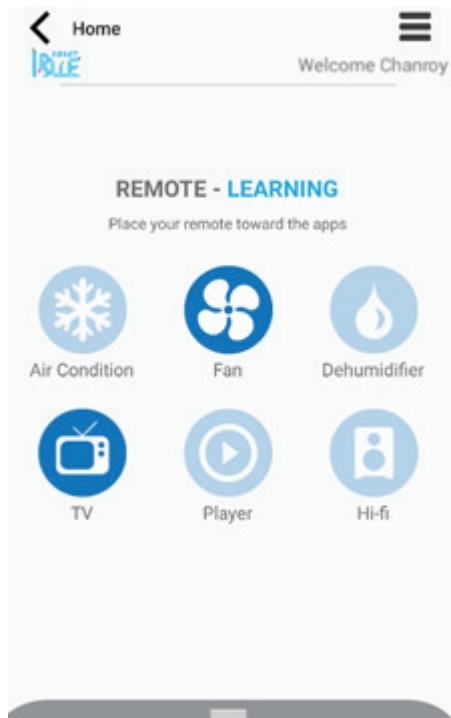


The ‘Search Device’ page will appear. Tap-‘Search Device’ to search the remote and tap ‘add’ to associate or tap ‘Scan QR Code’ on the device to associate.

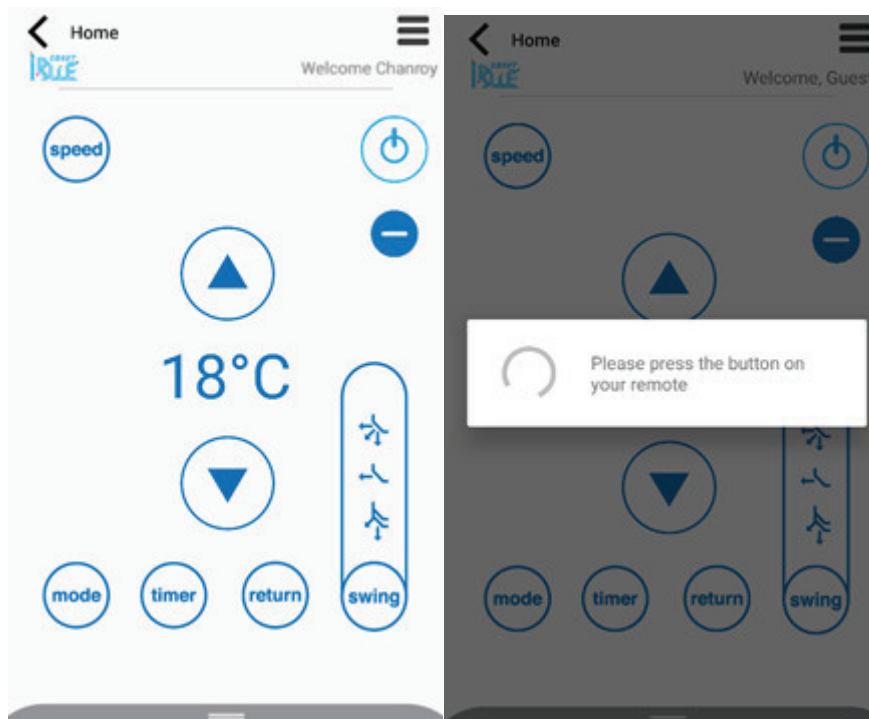
The small LED light at the front will flash blue quickly when associating, the plug will show on the ‘Associated Devices’ list if associated successfully. Tap the ‘return’ symbol which on the top left corner to ‘Home’

Step 5:

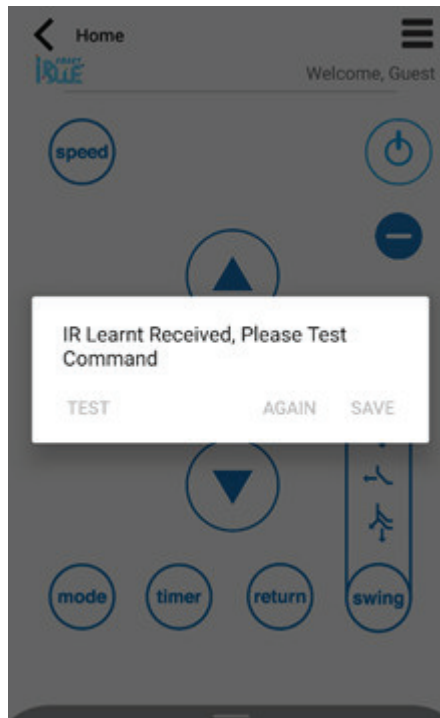
Select 'My Device' and you will see the 'REMOTE' in darkened color. It means you have successfully associated the Universal Remote. Now you can tap the 'REMOTE' to enter the control panel. Select the home appliance you would like to control





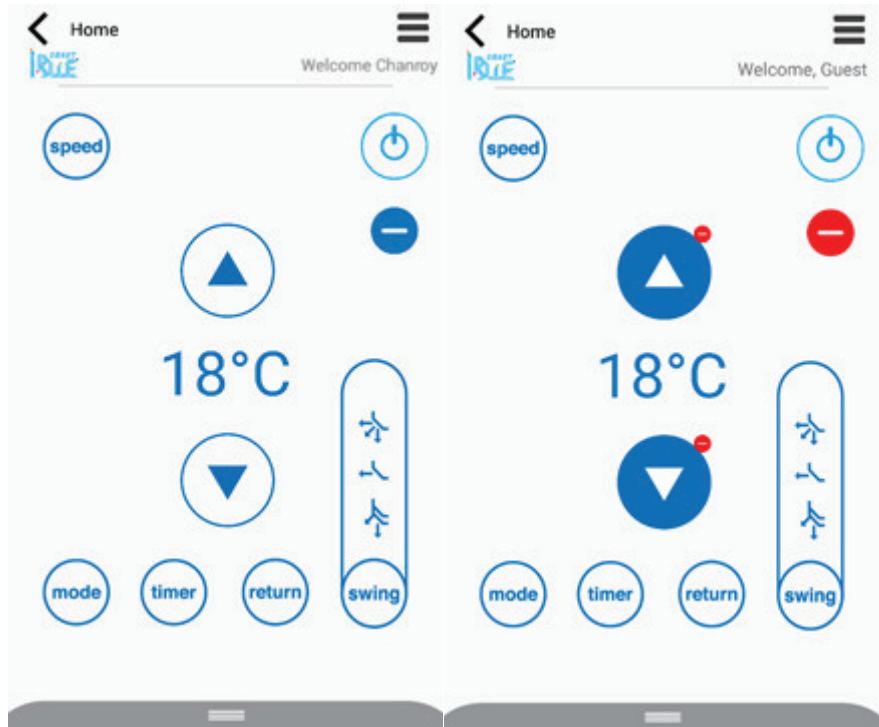
Press the button you want to learn, and press the button on your remote.



A message will be pop out if learnt successfully



If you want to delete the button, press  and press the button, you will see the background of button turns white. Then you can press  again and re-learn the button.

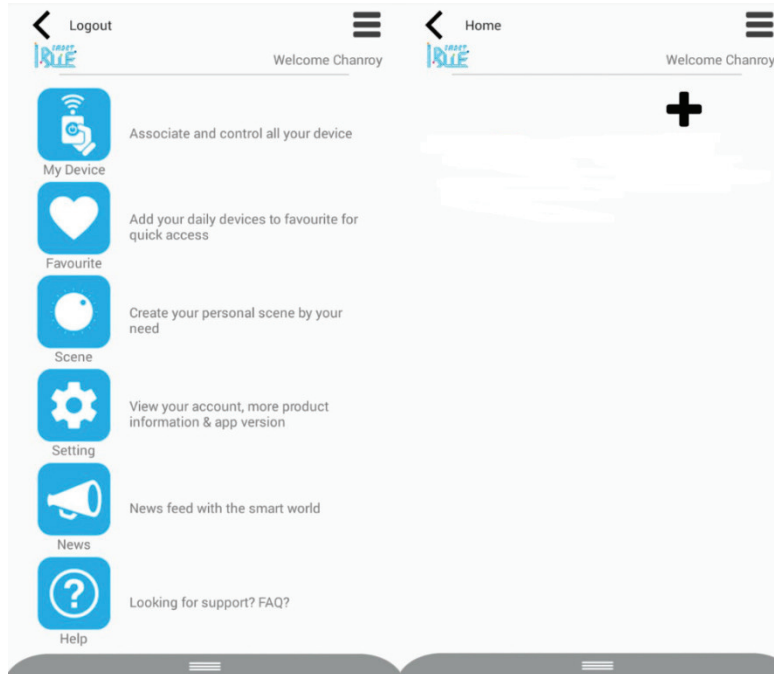



Your Universal remote has been set up.

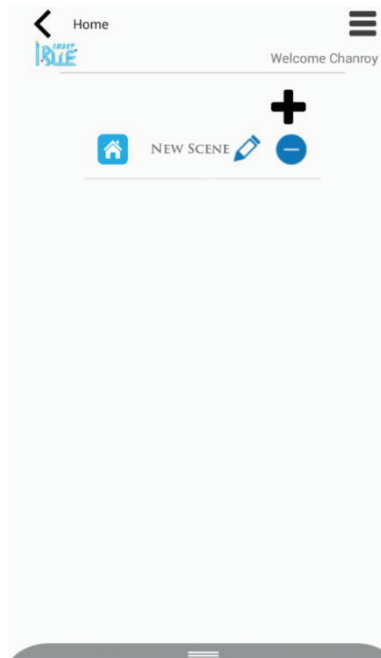
Scene mode:

Step 1:



Select 'Scene' and tap '+' to create a scene.

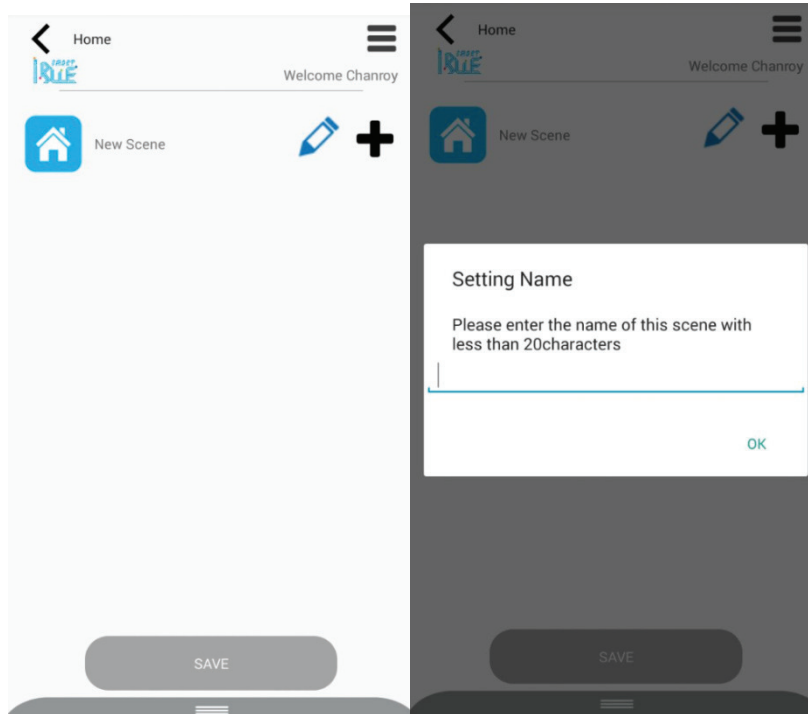


You will see a new scene and tap the  to create your scene.



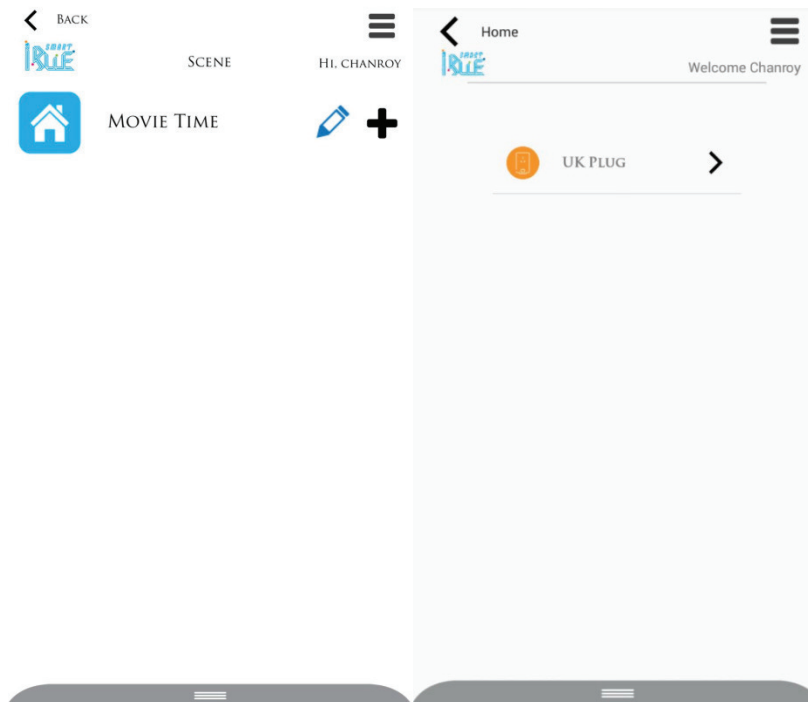
### Step 2:

After entering to the scene, tap  to edit name or press the  to change the icon.



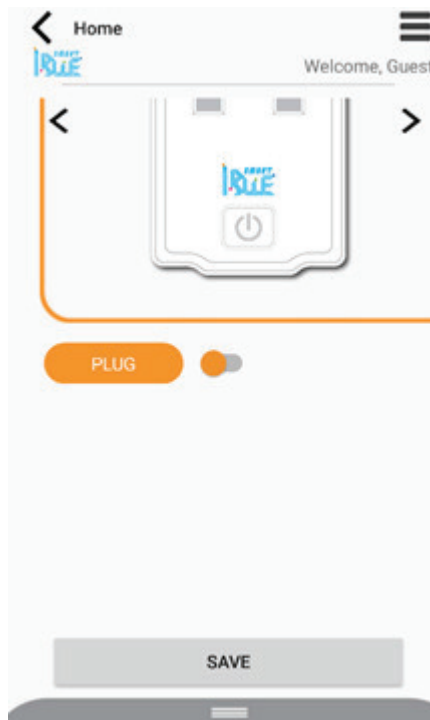
### Step 3:

Tap '+' to add device to the scene, associated devices will be on the list.

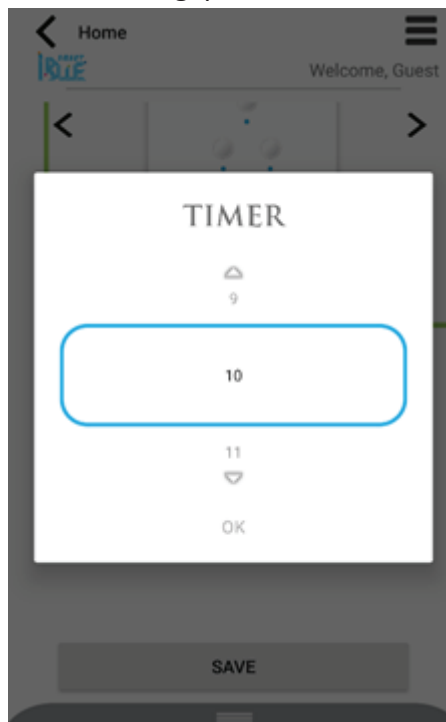




Select the device and action you would like to add and save.



Set the time gap to activate between devices (unit per sec.)



Step 4:

After adding your devices, press save and your personal scene will be created.

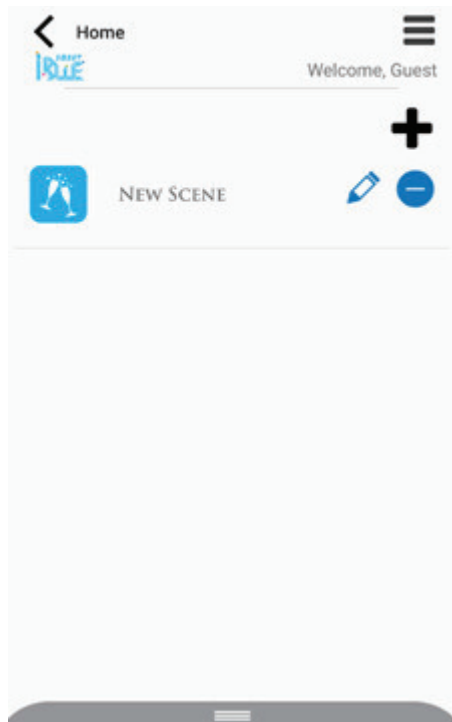


If you want to edit the devices setting from the scene, just press to edit or remove, then save.



Step 5:

Press to let your scene begins.



Please go to [www.smartiblue.com](http://www.smartiblue.com) for more details and support.

FCC ID: 2AKSEIRC-01

This device complies with Part 15 of the FCC Rules. Operation is subject to the following two conditions:

- (1) This device may not cause harmful interference, and
- (2) This device must accept any interference received, including interference that may cause undesired operation.

- **Caution:** The user is cautioned that changes or modifications not expressly approved by the party responsible for compliance could void the user's authority to operate the equipment.
  
- **NOTE:** This equipment has been tested and found to comply with the limits for a Class B digital device, pursuant to Part 15 of the FCC Rules. These limits are designed to provide reasonable protection against harmful interference in a residential installation. This equipment generates uses and can radiate radio frequency energy and, if not installed and used in accordance with the instructions, may cause harmful interference to radio communications. However, there is no guarantee that interference will not occur in a particular installation.
  
- If this equipment does cause harmful interference to radio or television reception, which can be determined by turning the equipment off and on, the user is encouraged to try to correct the interference by one or more of the following measures:
  - Reorient or relocate the receiving antenna.
  - Increase the separation between the equipment and receiver.
  - Connect the equipment into an outlet on a circuit different from that to which the receiver is connected.
  - Consult the dealer or an experienced radio/TV technician for help.

FCC Radiation Exposure Statement:

- This equipment complies with FCC radiation exposure limits set forth for an uncontrolled environment.
- This transmitter must not be co-located or operating in conjunction with any other antenna or transmitter.