

# Gateway User Manual

## Safety

Please read all of the safety and operating instructions before using your device:

1. Do not open the device or attempt to repair or service it.
2. Use the device in a dry location, and avoid placing it in a humid environment.
3. Do not submerge the device in liquid or attempt to clean it with liquids or solvents.  
To clean the device, disconnect from the power and use a damp towel.
4. This device should only be used indoors.

## Specification

Model No: GWL-01

Input: DC 5V/1A

Temperature: 0°C to 40°C (Operating), -20°C to 65°C (Storage)

Humidity: 10% to 90% Non-condensing (Operating), 5% to 90% Non-condensing (Storage)

Operating frequency: 2400~2483.5MHz

Max. transmit power: -2.7dBm

## System Requirement

- A router (with WPS button is recommended)
- A broadband Internet connection
- An e-mail account (required to register for Smart iBlue app)
- Mobile device and tablet with iOS 7.0 or above, Android 4.4 or above, Bluetooth 4.0 or above

## How to install Smart iBlue app

To find and install Smart iBlue app for iOS:

1. On your mobile device, open App Store.
2. Tap the Search icon.
3. Enter Smart iBlue in the search field.
4. Select Smart iBlue in the search results to go to the app page.
5. Follow the standard installation procedure.

The procedure to find and install Smart iBlue app for Android is similar

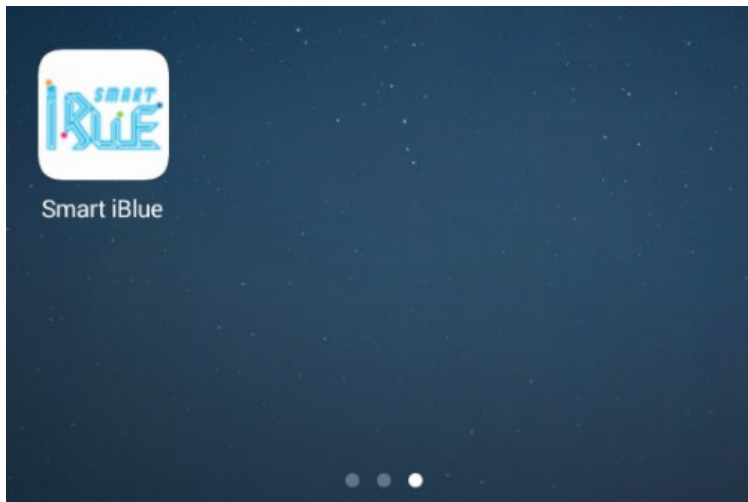
## **Gateway set up:**

1. Connect the USB power cable, check if the indicator is on, will flash red steadily, waiting for association.
2. Plug in the network cable from the router to the Gateway.

## App Instruction:

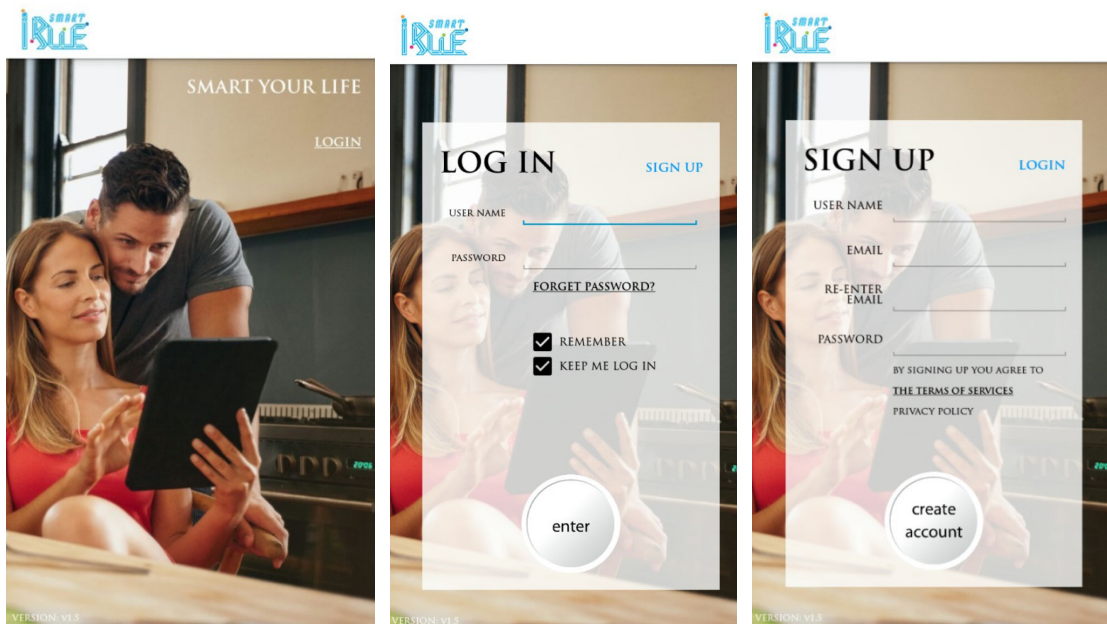
Step 1:

Download 'Smart iBlue' app from the App Store (iPhone, iPad, or iPod touch) or Google Play (Android). Once 'Smart iBlue' app is installed, launch the app.



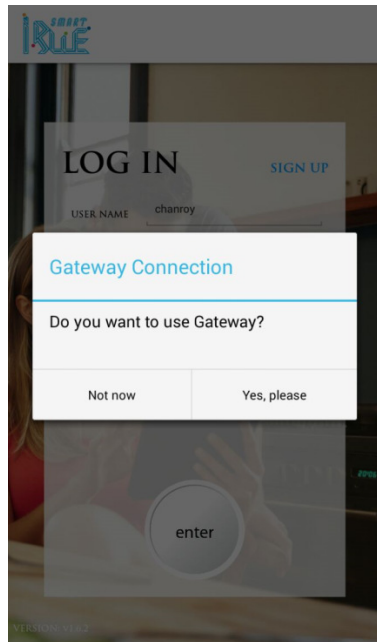
Step 2:

Log into your 'Smart iBlue' account. If you don't have one, sign up for a free account by clicking-'Sign up'. Then follow the instruction to create account.



Step 3:

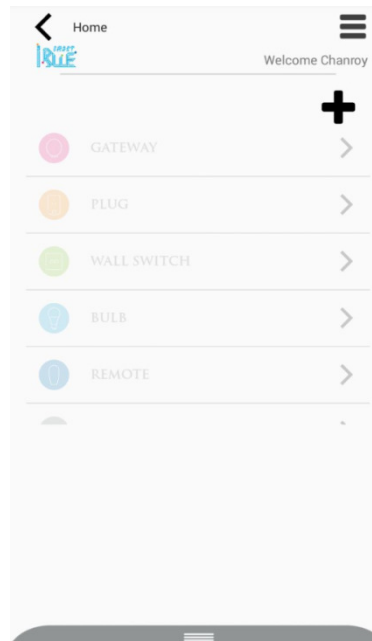
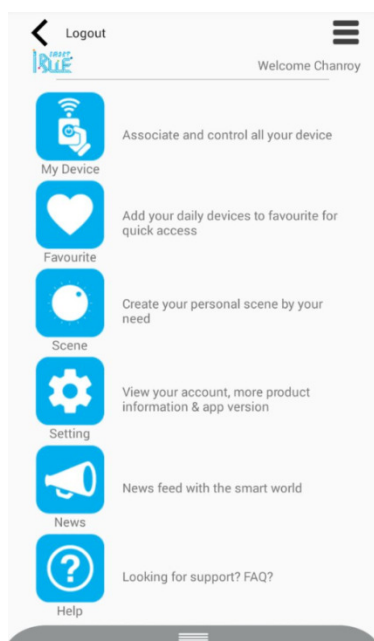
2 options will pop out when you logging in- Gateway & non-Gateway mode



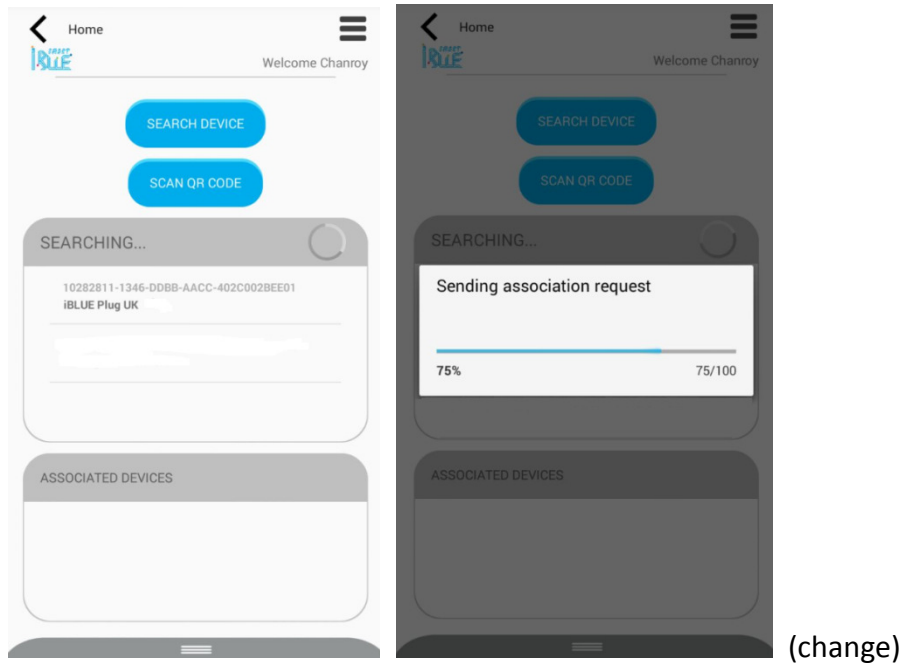
Choose non-Gateway mode to associate device

Step 4:

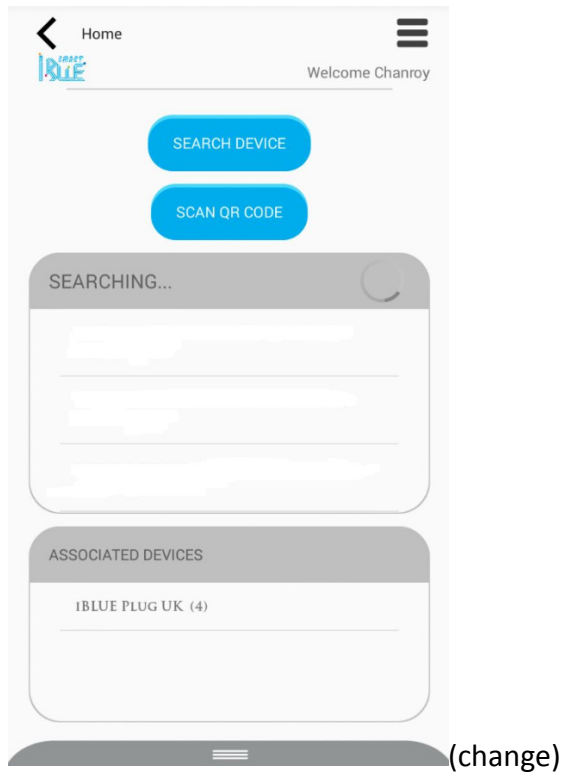
Select 'My Device', tap '+' icon.



The 'Search Device' page will appear. Tap-'Search Device' to search the gateway and tap 'add' to associate or tap 'Scan QR Code' on the device to associate.



The small LED light will flash red quickly when associating, the gateway will show on the 'Associated Devices' list if associated successfully. Tap the 'return' symbol which on the top left corner to 'Home'.



**Step 5:**

Select 'My Device' and you will see the 'GATEWAY' in darken color. It means you have successfully associated the Gateway. Now you can go back to the login in page and enter gateway mode as shown in step 3. You can control your devices from outside now.

**Please go to [www.smartiblue.com](http://www.smartiblue.com) for more details and support.**

FCC ID: 2AKSEGWL-01

This device complies with Part 15 of the FCC Rules. Operation is subject to the following two conditions:

- (1) This device may not cause harmful interference, and
- (2) This device must accept any interference received, including interference that may cause undesired operation.

- **Caution:** The user is cautioned that changes or modifications not expressly approved by the party responsible for compliance could void the user's authority to operate the equipment.
  
- **NOTE:** This equipment has been tested and found to comply with the limits for a Class B digital device, pursuant to Part 15 of the FCC Rules. These limits are designed to provide reasonable protection against harmful interference in a residential installation. This equipment generates uses and can radiate radio frequency energy and, if not installed and used in accordance with the instructions, may cause harmful interference to radio communications. However, there is no guarantee that interference will not occur in a particular installation.
  
- If this equipment does cause harmful interference to radio or television reception, which can be determined by turning the equipment off and on, the user is encouraged to try to correct the interference by one or more of the following measures:
  - Reorient or relocate the receiving antenna.
  - Increase the separation between the equipment and receiver.
  - Connect the equipment into an outlet on a circuit different from that to which the receiver is connected.
  - Consult the dealer or an experienced radio/TV technician for help.

FCC Radiation Exposure Statement:

- This equipment complies with FCC radiation exposure limits set forth for an uncontrolled environment.
- This transmitter must not be co-located or operating in conjunction with any other antenna or transmitter.