

12. SAR Test Data

GSM850

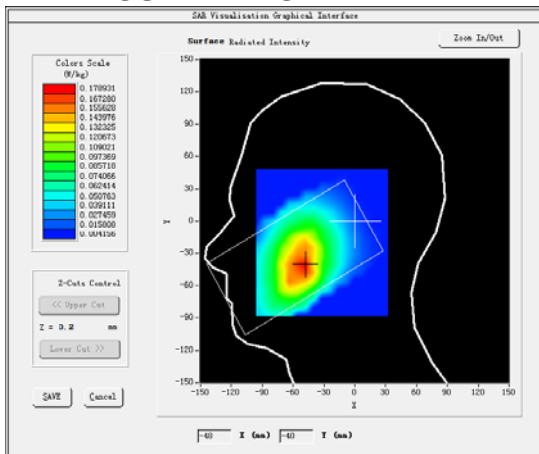
MEASUREMENT 1

Middle Band SAR (Channel 190):

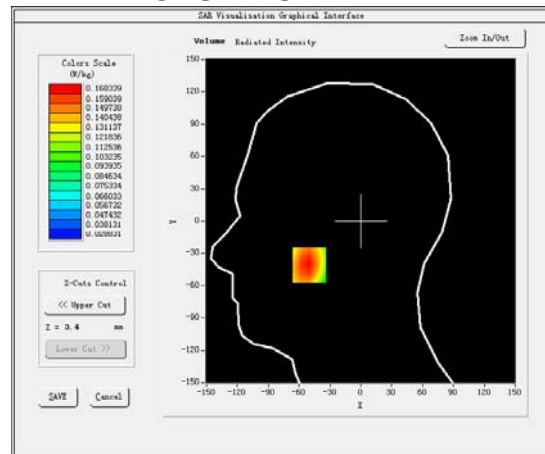
Date: 05/06/2017

Frequency (MHz)	836.600000
Relative permittivity (real part)	41.417760
Relative permittivity (imaginary part)	18.129852
Conductivity (S/m)	0.874923
Variation (%)	1.000000
Crest Factor:	8.3
Probe Conversion factor	5.50
E-Field Probe:	SSE5 (SN 07/15 EP248)
Area Scan	<u>dx=8mm dy=8mm, h= 5.00 mm</u>
ZoomScan	<u>5x5x7, dx=8mm dy=8mm</u> <u>dz=5mm, Complete/ndx=8mm dy=8mm, h=</u> <u>5.00 mm</u>
Phantom	<u>Left head</u>
Device Position	<u>Cheek</u>
Band	<u>GSM850(voice)</u>

SURFACE SAR



VOLUME SAR



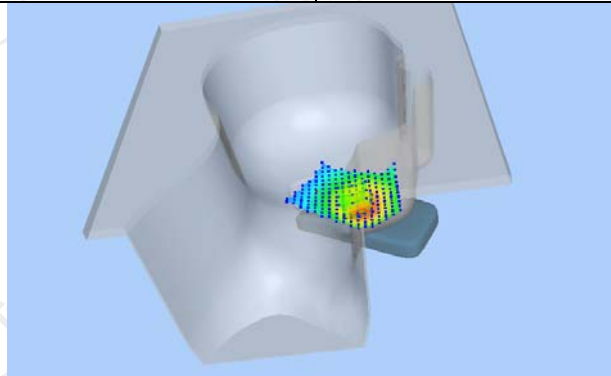
Maximum location: X=-50.00, Y=-41.00 SAR Peak: 0.20 W/kg

SAR 10g (W/Kg)

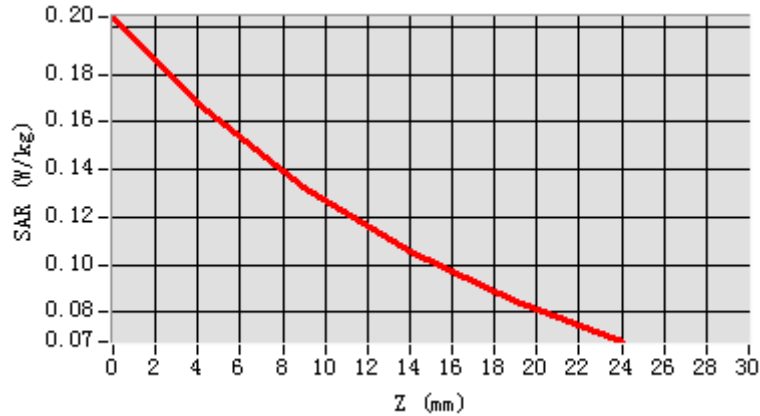
0.124077

SAR 1g (W/Kg)

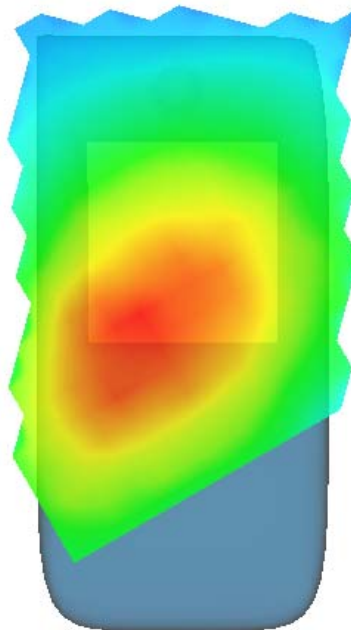
0.163612



Z (mm)	0.00	4.00	9.00	14.00	19.00
SAR (W/Kg)	0.2042	0.1683	0.1326	0.1055	0.0847



Hot spot position



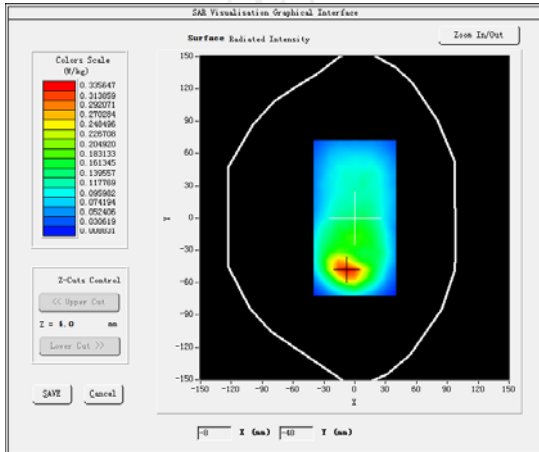
MEASUREMENT 2

Middle Band SAR (Channel 190):

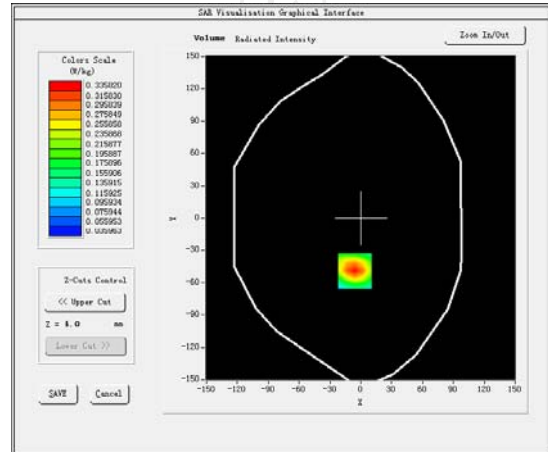
Date: 05/06/2017

Frequency (MHz)	836.600000
Relative permittivity (real part)	55.242077
Relative permittivity (imaginary part)	21.378187
Conductivity (S/m)	0.940253
Variation (%)	-2.980000
Crest Factor:	8.3
Probe Conversion factor	5.65
E-Field Probe:	SSE5 (SN 07/15 EP248)
Area Scan	<u>dx=8mm dy=8mm, h= 5.00 mm</u>
ZoomScan	<u>5x5x7, dx=8mm dy=8mm</u> <u>dz=5mm, Complete/ndx=8mm dy=8mm, h=</u> <u>5.00 mm</u>
Phantom	<u>Validation plane</u>
Device Position	<u>Body back(5mm)</u>
Band	<u>GSM850(Voice)</u>

SURFACE SAR



VOLUME SAR



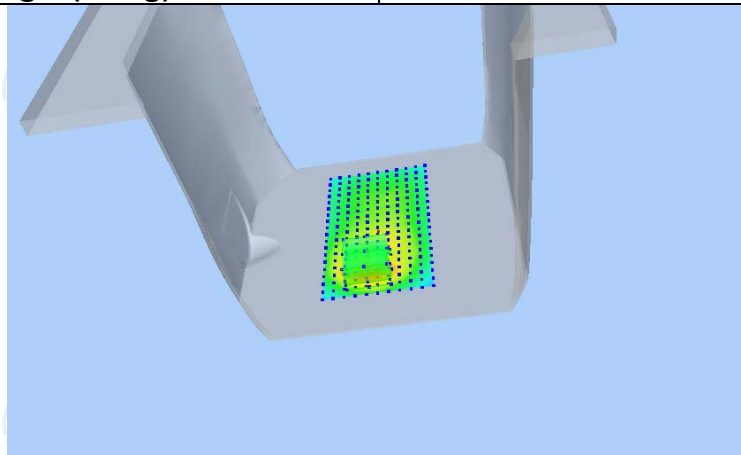
Maximum location: X=-6.00, Y=-49.00 SAR Peak: 0.51 W/kg

SAR 10g (W/Kg)

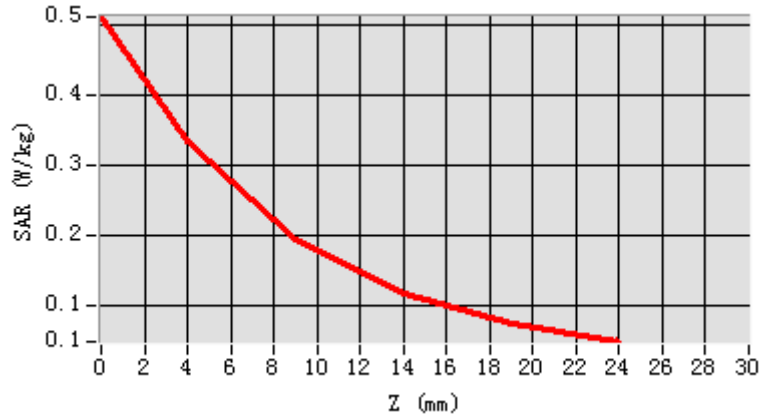
0.179771

SAR 1g (W/Kg)

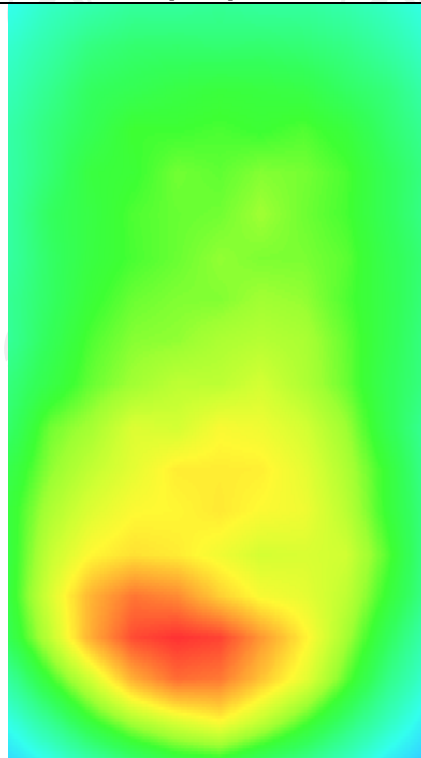
0.315400



Z (mm)	0.00	4.00	9.00	14.00	19.00
SAR (W/Kg)	0.5112	0.3358	0.1964	0.1181	0.0761



Hot spot position



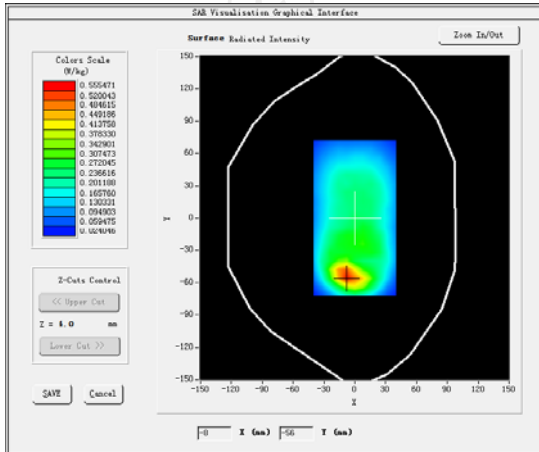
MEASUREMENT 3

Middle Band SAR (Channel 190):

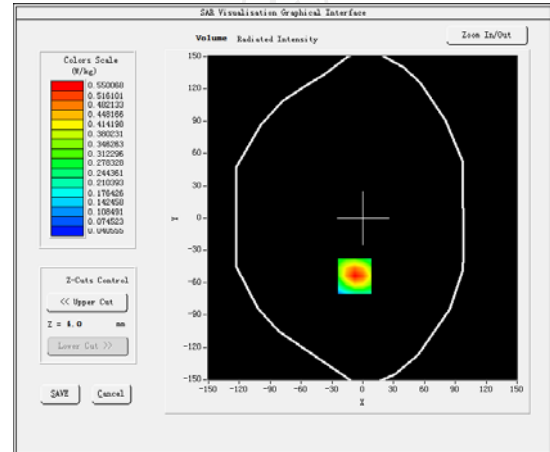
Date: 05/06/2017

Frequency (MHz)	836.600000
Relative permittivity (real part)	55.242077
Relative permittivity (imaginary part)	21.378187
Conductivity (S/m)	0.940253
Variation (%)	0.930000
Crest Factor:	2.0
Probe Conversion factor	5.65
E-Field Probe:	SSE5 (SN 07/15 EP248)
Area Scan	<u>dx=8mm dy=8mm, h= 5.00 mm</u>
ZoomScan	<u>5x5x7, dx=8mm dy=8mm</u> <u>dz=5mm, Complete/ndx=8mm dy=8mm, h=</u> <u>5.00 mm</u>
Phantom	<u>Validation plane</u>
Device Position	<u>Body back(5mm)</u>
Band	<u>GSM850(GPRS 4slot)</u>

SURFACE SAR



VOLUME SAR



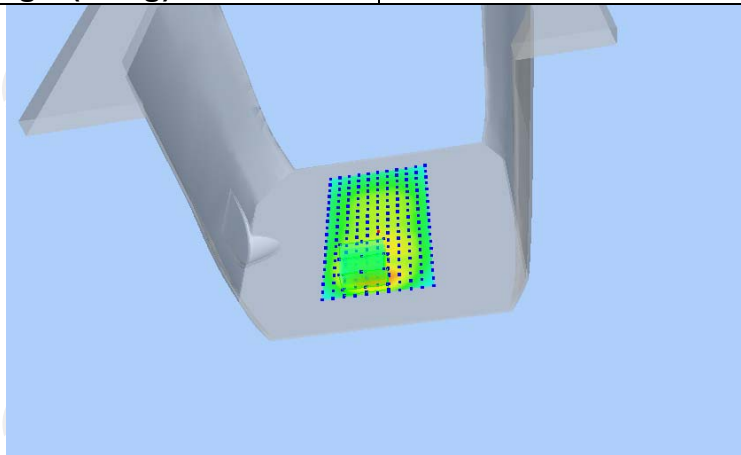
Maximum location: X=-8.00, Y=-54.00 SAR Peak: 0.86 W/kg

SAR 10g (W/Kg)

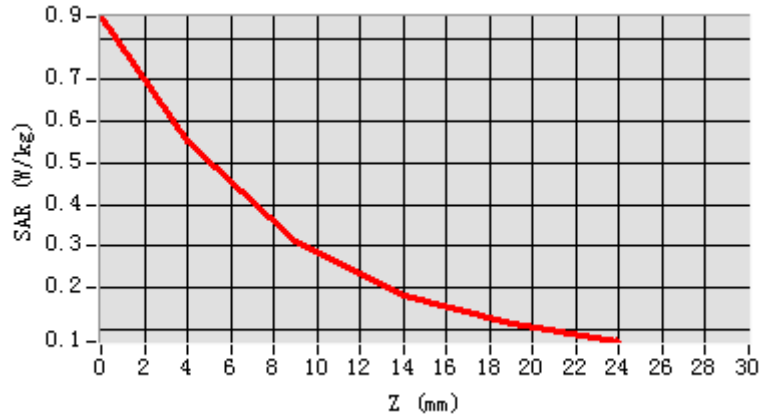
0.285624

SAR 1g (W/Kg)

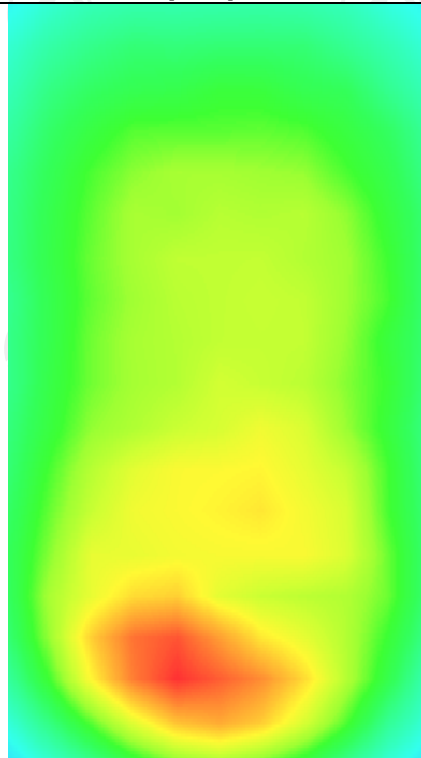
0.519420



Z (mm)	0.00	4.00	9.00	14.00	19.00
SAR (W/Kg)	0.8524	0.5501	0.3122	0.1805	0.1109



Hot spot position



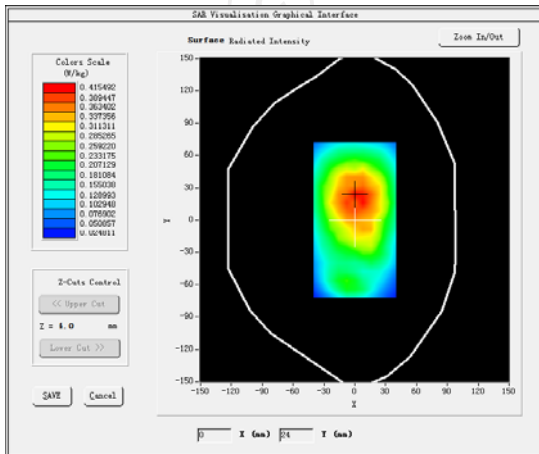
MEASUREMENT 4

Middle Band SAR (Channel 190):

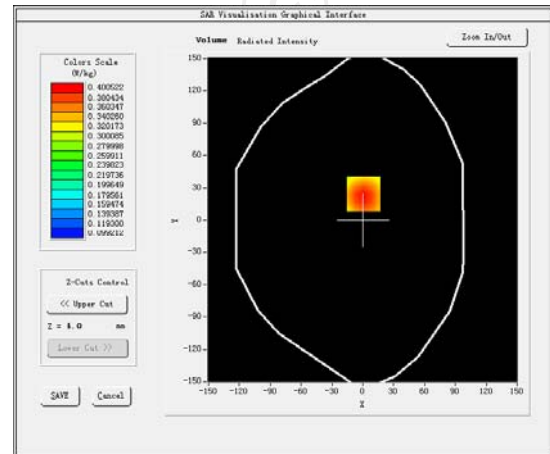
Date: 05/06/2017

Frequency (MHz)	836.600000
Relative permittivity (real part)	55.242077
Relative permittivity (imaginary part)	21.378187
Conductivity (S/m)	0.940253
Variation (%)	0.770000
Crest Factor:	2.0
Probe Conversion factor	5.65
E-Field Probe:	SSE5 (SN 07/15 EP248)
Area Scan	<u>dx=8mm dy=8mm, h= 5.00 mm</u>
ZoomScan	<u>5x5x7, dx=8mm dy=8mm</u> <u>dz=5mm, Complete/ndx=8mm dy=8mm, h=</u> <u>5.00 mm</u>
Phantom	<u>Validation plane</u>
Device Position	<u>Body back(10mm)</u>
Band	<u>GSM850(GPRS 4slot hotspot)</u>

SURFACE SAR



VOLUME SAR



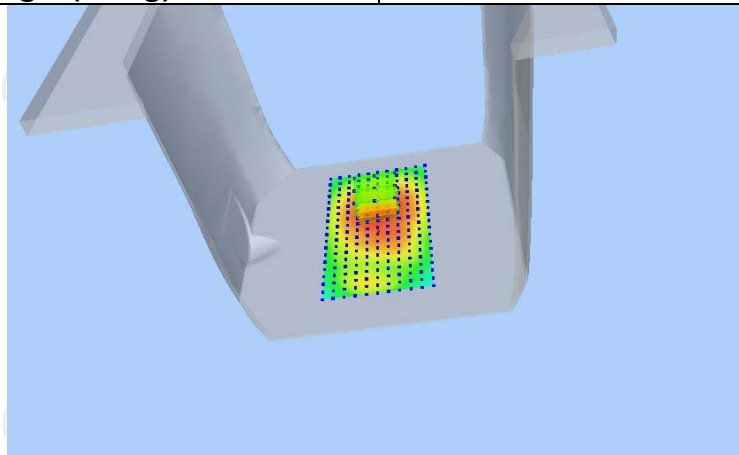
Maximum location: X=1.00, Y=24.00 SAR Peak: 0.53 W/kg

SAR 10g (W/Kg)

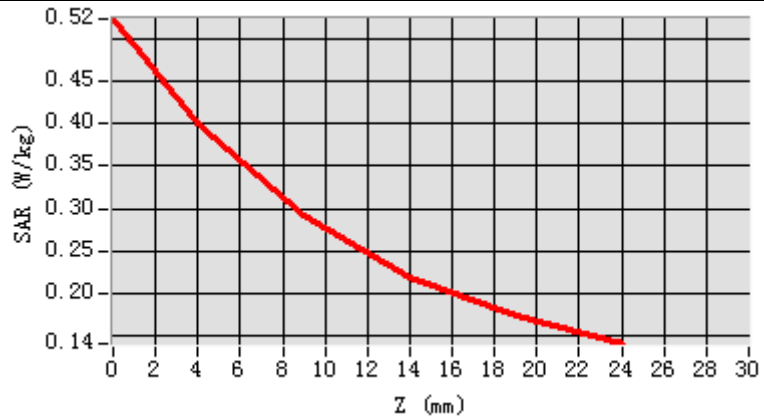
0.280015

SAR 1g (W/Kg)

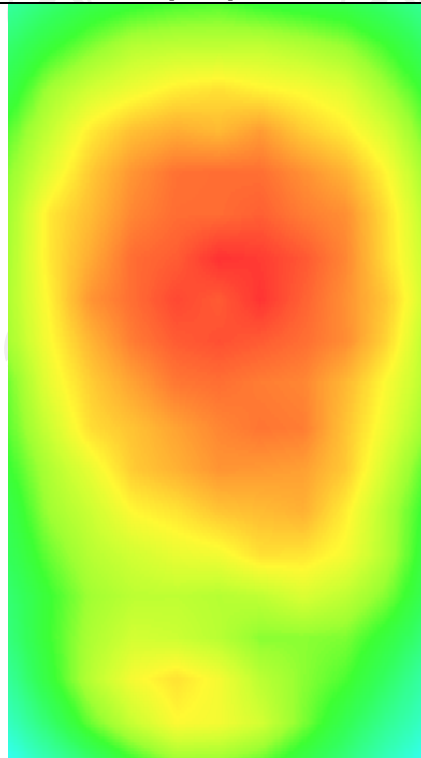
0.388336



Z (mm)	0.00	4.00	9.00	14.00	19.00
SAR (W/Kg)	0.5229	0.4005	0.2912	0.2199	0.1743



Hot spot position



GSM1900

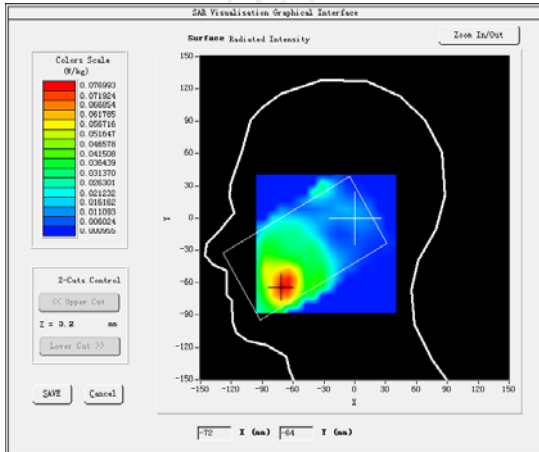
MEASUREMENT 1

Higher Band SAR (Channel 810):

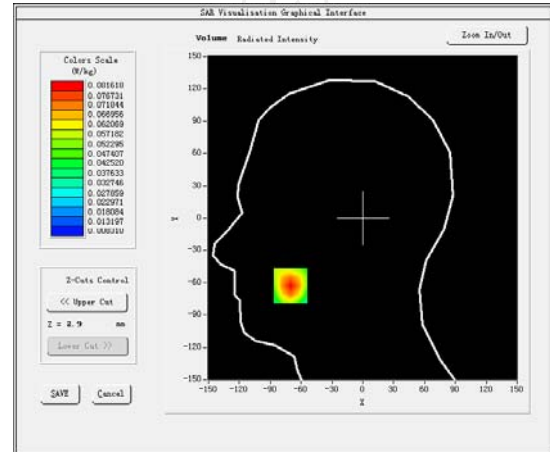
Date: 07/06/2017

Frequency (MHz)	1909.80000
Relative permittivity (real part)	39.076721
Relative permittivity (imaginary part)	12.607061
Conductivity (S/m)	1.380609
Variation (%)	3.330000
Crest Factor	8.3
Probe Conversion factor	4.85
E-Field Probe:	SSE5 (SN 07/15 EP248)
Area Scan	<u>dx=8mm dy=8mm, h= 5.00 mm</u>
ZoomScan	<u>5x5x7, dx=8mm dy=8mm</u> <u>dz=5mm, Complete/ndx=8mm dy=8mm, h=</u> <u>5.00 mm</u>
Phantom	<u>Right head</u>
Device Position	<u>Cheek</u>
Band	<u>GSM1900(voice)</u>

SURFACE SAR



VOLUME SAR



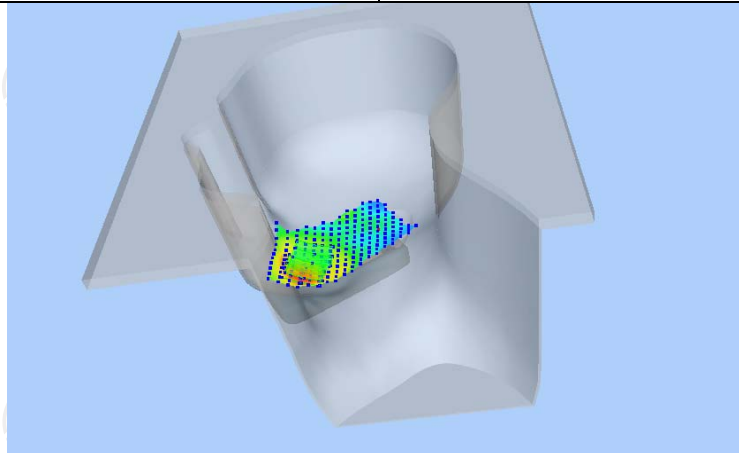
Maximum location: X=-70.00, Y=-63.00 SAR Peak: 0.11 W/kg

SAR 10g (W/Kg)

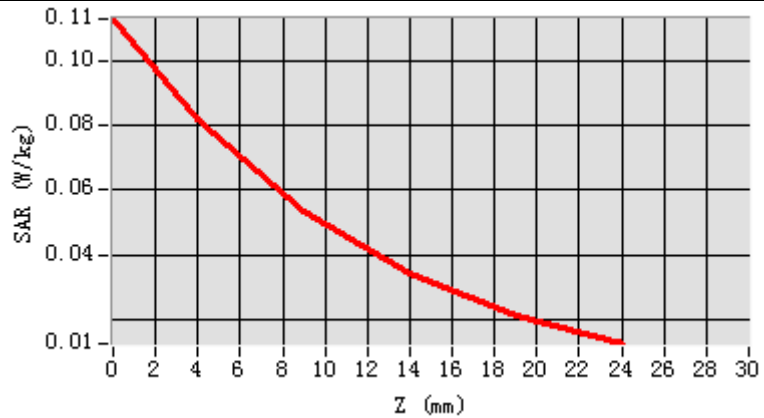
0.056881

SAR 1g (W/Kg)

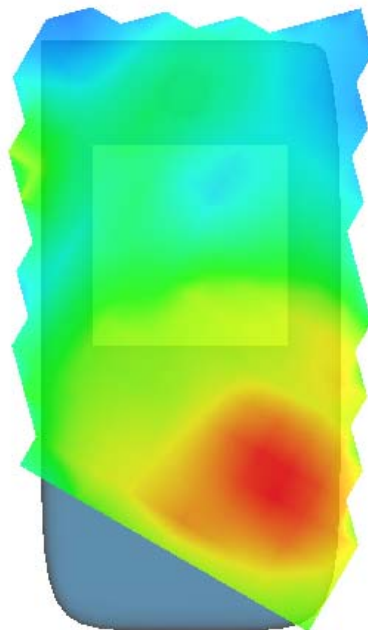
0.096799



Z (mm)	0.00	4.00	9.00	14.00	19.00
SAR (W/Kg)	0.1128	0.0816	0.0534	0.0343	0.0216



Hot spot position



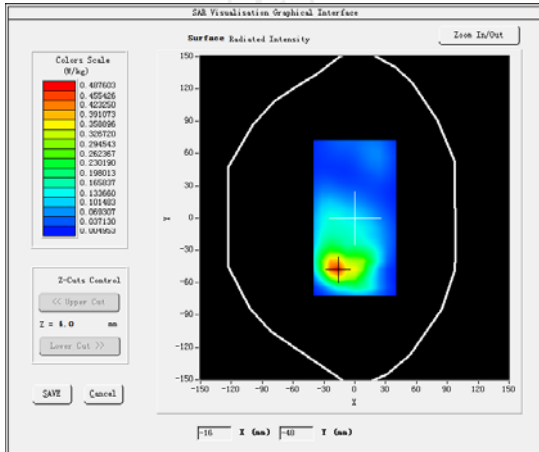
MEASUREMENT 2

Higher Band SAR (Channel 810):

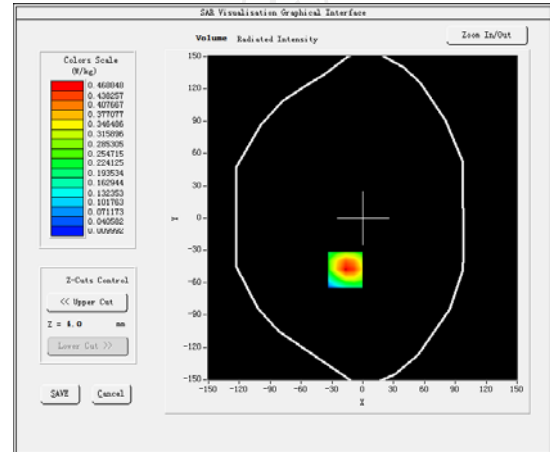
Date: 07/06/2017

Frequency (MHz)	1909.80000
Relative permittivity (real part)	53.291001
Relative permittivity (imaginary part)	14.232400
Conductivity (S/m)	1.530295
Variation (%)	-0.020000
Crest Factor	8.3
Probe Conversion factor	5.01
E-Field Probe:	SSE5 (SN 07/15 EP248)
Area Scan	<u>dx=8mm dy=8mm, h= 5.00 mm</u>
ZoomScan	<u>5x5x7, dx=8mm dy=8mm</u> <u>dz=5mm, Complete/ndx=8mm dy=8mm, h=</u> <u>5.00 mm</u>
Phantom	<u>Validation plane</u>
Device Position	<u>Body back(5mm)</u>
Band	<u>GSM1900(voice)</u>

SURFACE SAR



VOLUME SAR



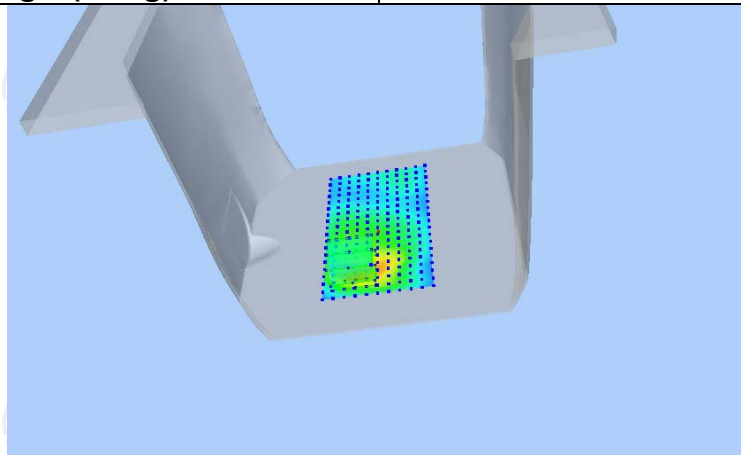
Maximum location: X=-17.00, Y=-48.00 SAR Peak: 0.72 W/kg

SAR 10g (W/Kg)

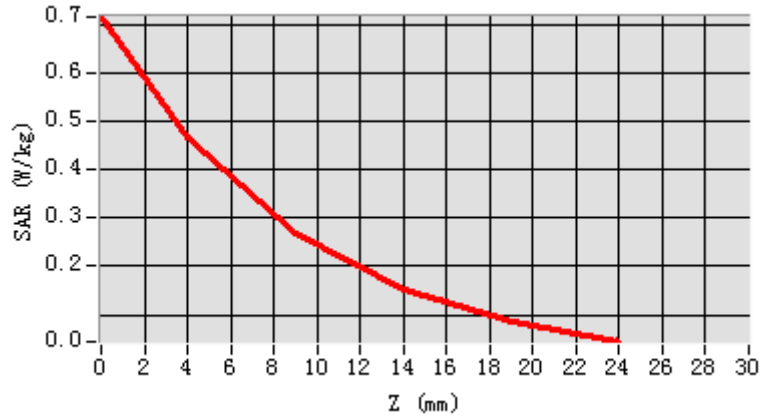
0.245017

SAR 1g (W/Kg)

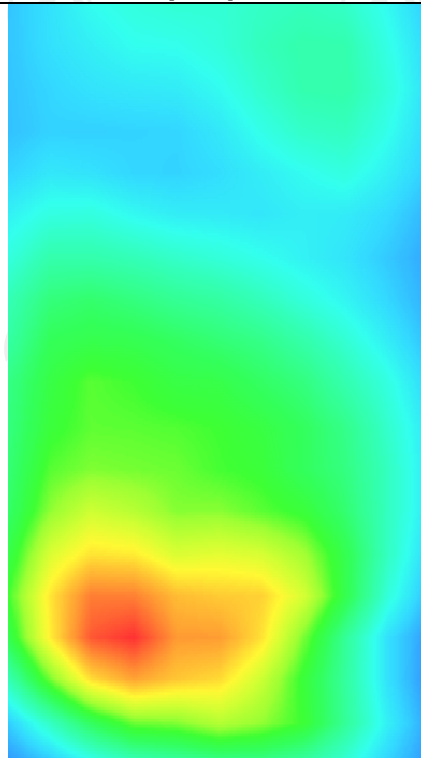
0.443334



Z (mm)	0.00	4.00	9.00	14.00	19.00
SAR (W/Kg)	0.7152	0.4688	0.2683	0.1512	0.0852



Hot spot position



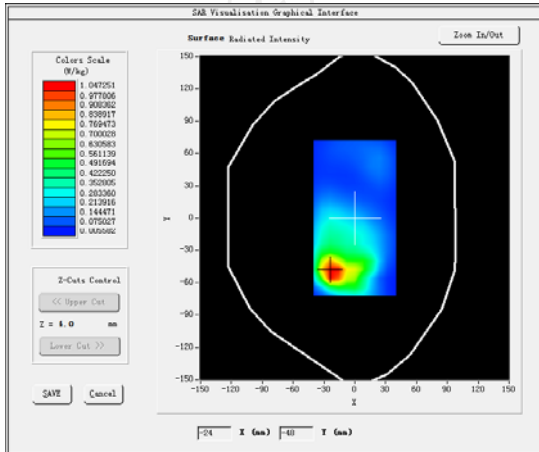
MEASUREMENT 3

Lower Band SAR (Channel 512):

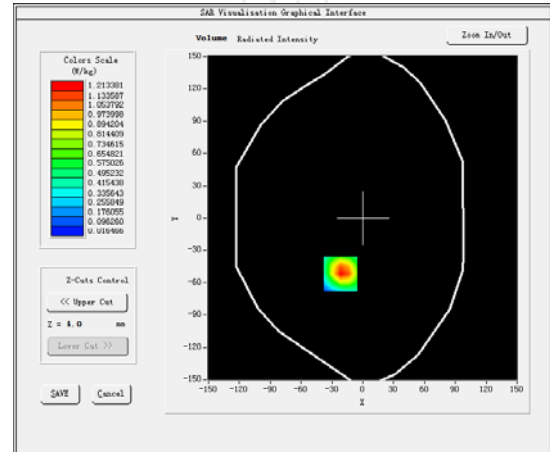
Date: 07/06/2017

Frequency (MHz)	1850.199951
Relative permittivity (real part)	53.341022
Relative permittivity (imaginary part)	14.232220
Conductivity (S/m)	1.486495
Variation (%)	-1.810000
Crest Factor	2.0
Probe Conversion factor	5.01
E-Field Probe:	SSE5 (SN 07/15 EP248)
Area Scan	<u>dx=8mm dy=8mm, h= 5.00 mm</u>
ZoomScan	<u>5x5x7, dx=8mm dy=8mm</u> <u>dz=5mm, Complete/ndx=8mm dy=8mm, h=</u> <u>5.00 mm</u>
Phantom	<u>Validation plane</u>
Device Position	<u>Body back(5mm)</u>
Band	<u>GSM1900(GPRS 4slot)</u>

SURFACE SAR



VOLUME SAR



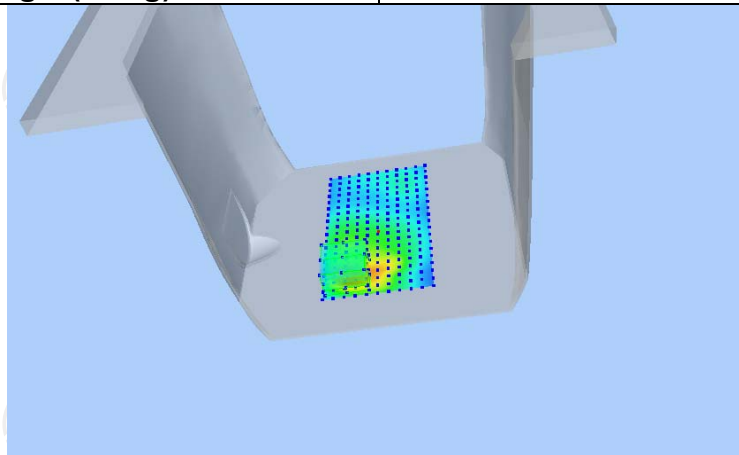
Maximum location: X=-22.00, Y=-52.00 SAR Peak: 2.08 W/kg

SAR 10g (W/Kg)

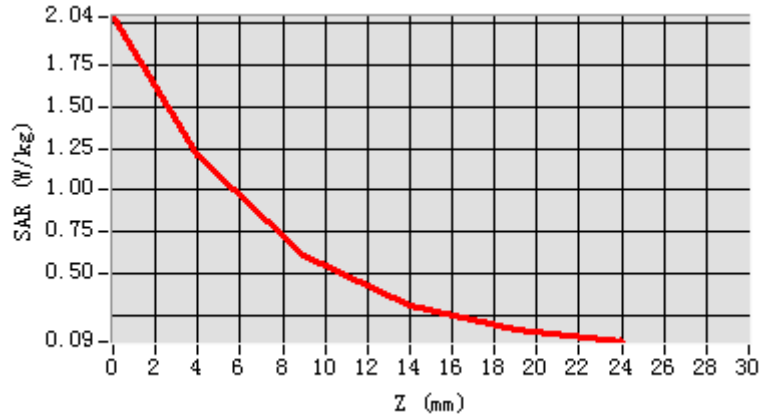
0.575532

SAR 1g (W/Kg)

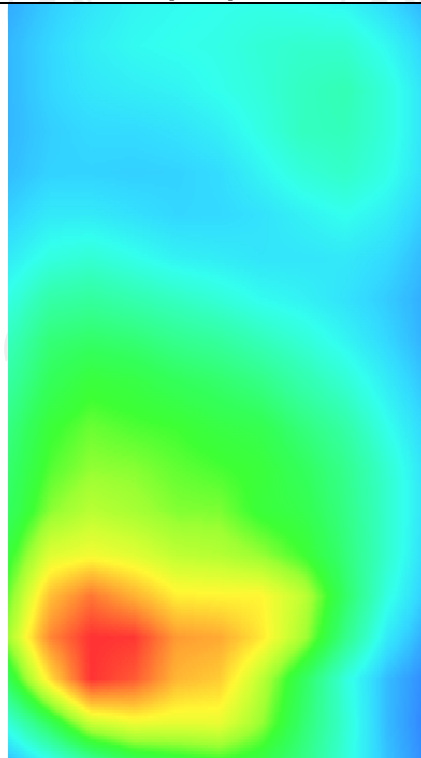
1.045772



Z (mm)	0.00	4.00	9.00	14.00	19.00
SAR (W/Kg)	2.0400	1.2134	0.6062	0.3028	0.1625



Hot spot position



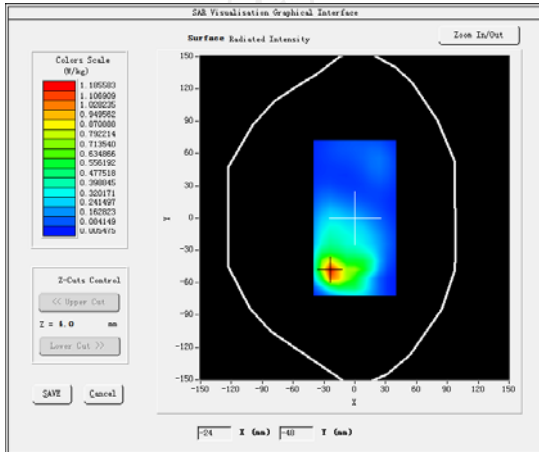
MEASUREMENT 4-repeated

Lower Band SAR (Channel 512):

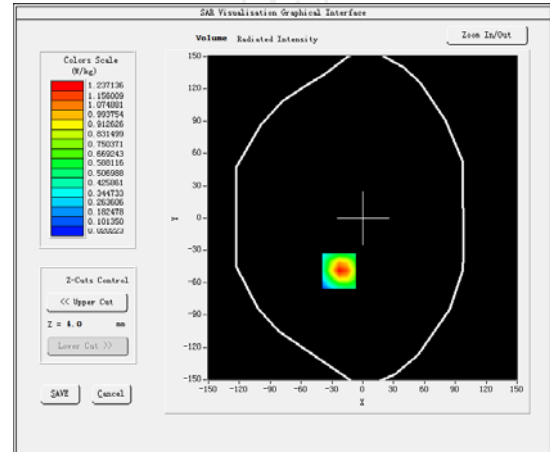
Date: 07/06/2017

Frequency (MHz)	1850.199951
Relative permittivity (real part)	53.341022
Relative permittivity (imaginary part)	14.232220
Conductivity (S/m)	1.486495
Variation (%)	-0.780000
Crest Factor	2.0
Probe Conversion factor	5.01
E-Field Probe:	SSE5 (SN 07/15 EP248)
Area Scan	<u>dx=8mm dy=8mm, h= 5.00 mm</u>
ZoomScan	<u>5x5x7, dx=8mm dy=8mm</u> <u>dz=5mm, Complete/ndx=8mm dy=8mm, h=</u> <u>5.00 mm</u>
Phantom	<u>Validation plane</u>
Device Position	<u>Body back(5mm)</u>
Band	<u>GSM1900(GPRS 4slot)</u>

SURFACE SAR



VOLUME SAR



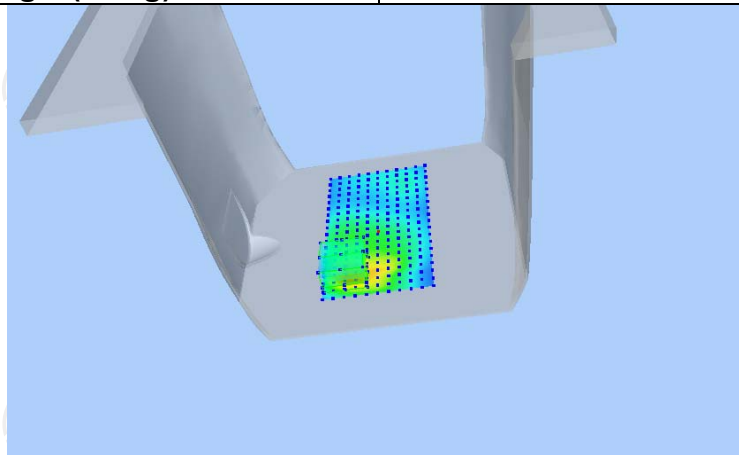
Maximum location: X=-23.00, Y=-49.00 SAR Peak: 2.05 W/kg

SAR 10g (W/Kg)

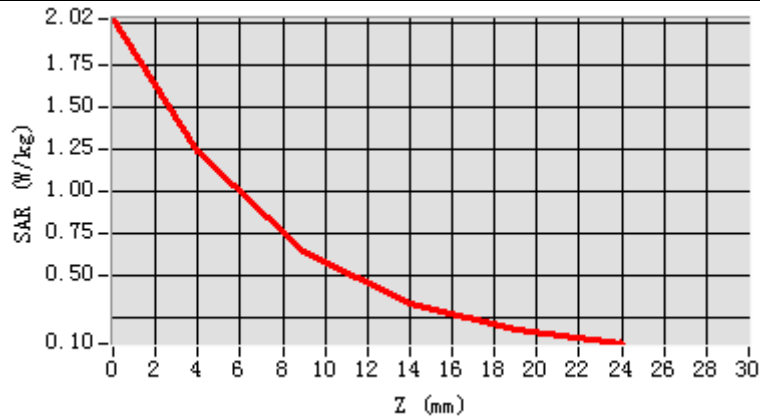
0.578785

SAR 1g (W/Kg)

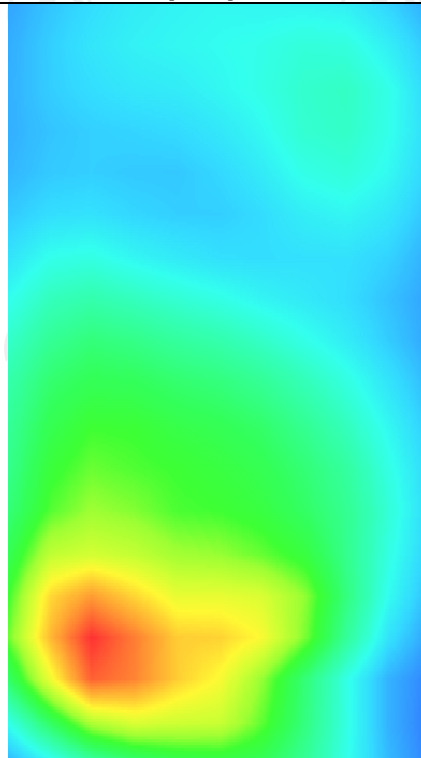
1.054243



Z (mm)	0.00	4.00	9.00	14.00	19.00
SAR (W/Kg)	2.0218	1.2371	0.6443	0.3346	0.1826



Hot spot position



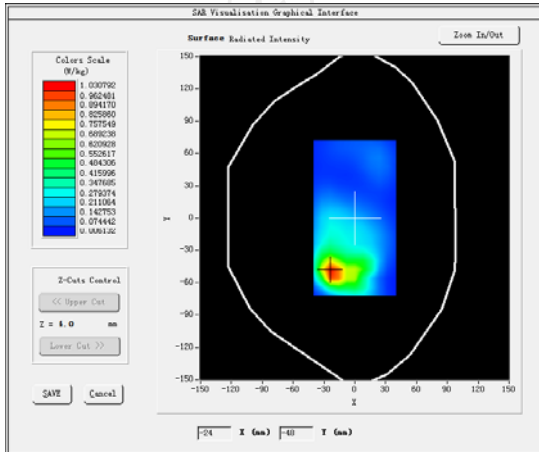
MEASUREMENT 5

Middle Band SAR (Channel 661):

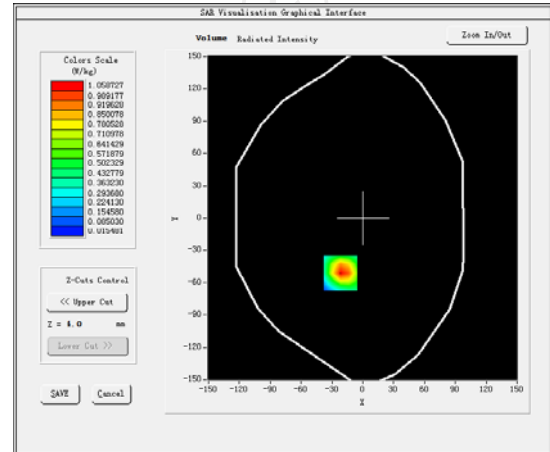
Date: 07/06/2017

Frequency (MHz)	1880.000000
Relative permittivity (real part)	53.320121
Relative permittivity (imaginary part)	14.225400
Conductivity (S/m)	1.500251
Variation (%)	-0.760000
Crest Factor	2.0
Probe Conversion factor	5.01
E-Field Probe:	SSE5 (SN 07/15 EP248)
Area Scan	<u>dx=8mm dy=8mm, h= 5.00 mm</u>
ZoomScan	<u>5x5x7, dx=8mm dy=8mm</u> <u>dz=5mm, Complete/ndx=8mm dy=8mm, h=</u> <u>5.00 mm</u>
Phantom	<u>Validation plane</u>
Device Position	<u>Body back(5mm)</u>
Band	<u>GSM1900(GPRS 4slot)</u>

SURFACE SAR



VOLUME SAR



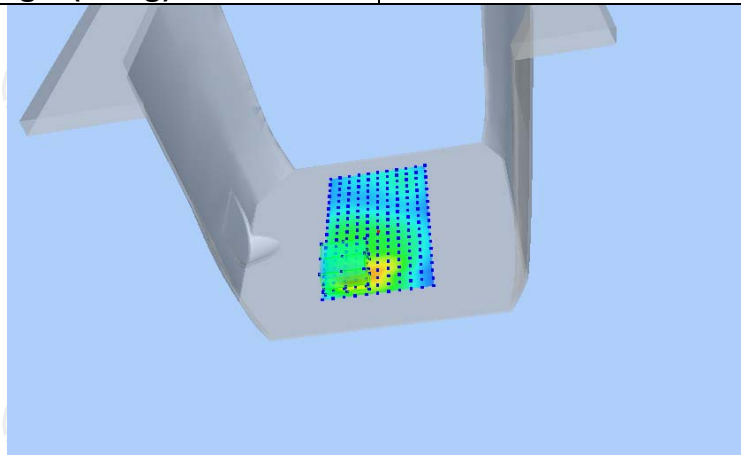
Maximum location: X=-22.00, Y=-51.00 SAR Peak: 1.78 W/kg

SAR 10g (W/Kg)

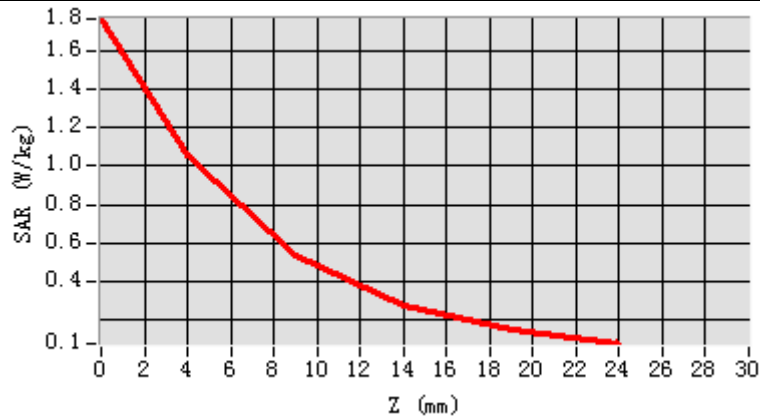
0.497182

SAR 1g (W/Kg)

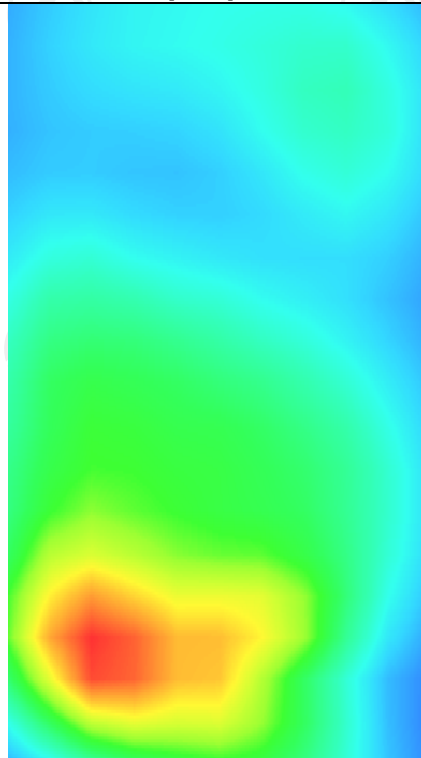
0.989377



Z (mm)	0.00	4.00	9.00	14.00	19.00
SAR (W/Kg)	1.7621	1.0587	0.5368	0.2717	0.1464



Hot spot position



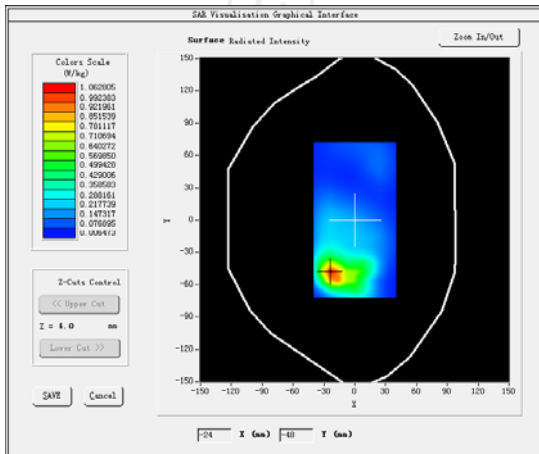
MEASUREMENT 6

Higher Band SAR (Channel 810):

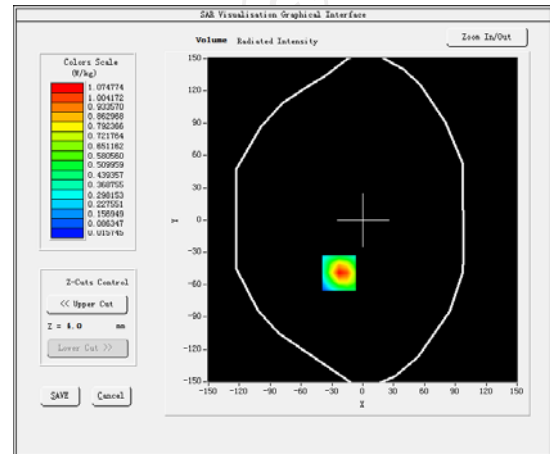
Date: 07/06/2017

Frequency (MHz)	1909.80000
Relative permittivity (real part)	53.291001
Relative permittivity (imaginary part)	14.232400
Conductivity (S/m)	1.530295
Variation (%)	-0.900000
Crest Factor	2.0
Probe Conversion factor	5.01
E-Field Probe:	SSE5 (SN 07/15 EP248)
Area Scan	<u>dx=8mm dy=8mm, h= 5.00 mm</u>
ZoomScan	<u>5x5x7, dx=8mm dy=8mm</u> <u>dz=5mm, Complete/ndx=8mm dy=8mm, h=</u> <u>5.00 mm</u>
Phantom	<u>Validation plane</u>
Device Position	<u>Body back(5mm)</u>
Band	<u>GSM1900(GPRS 4slot)</u>

SURFACE SAR



VOLUME SAR



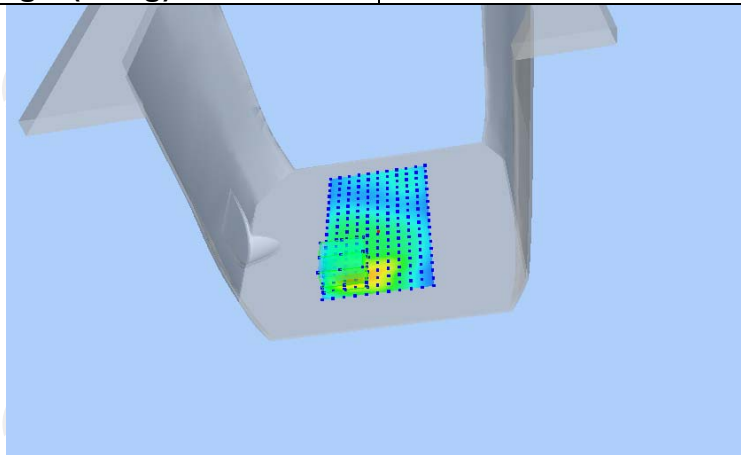
Maximum location: X=-23.00, Y=-49.00 SAR Peak: 1.78 W/kg

SAR 10g (W/Kg)

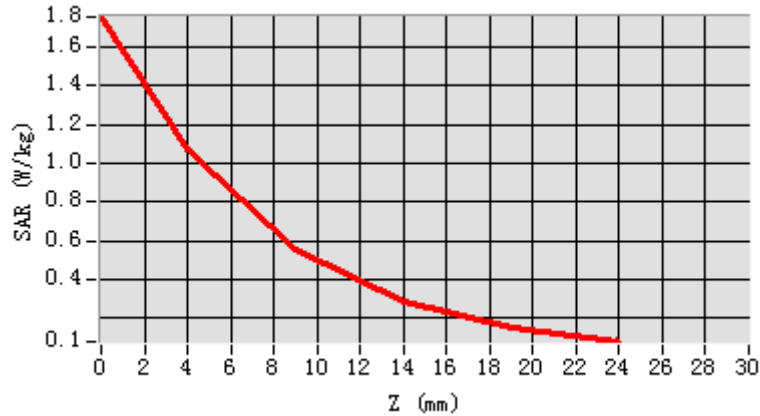
0.500886

SAR 1g (W/Kg)

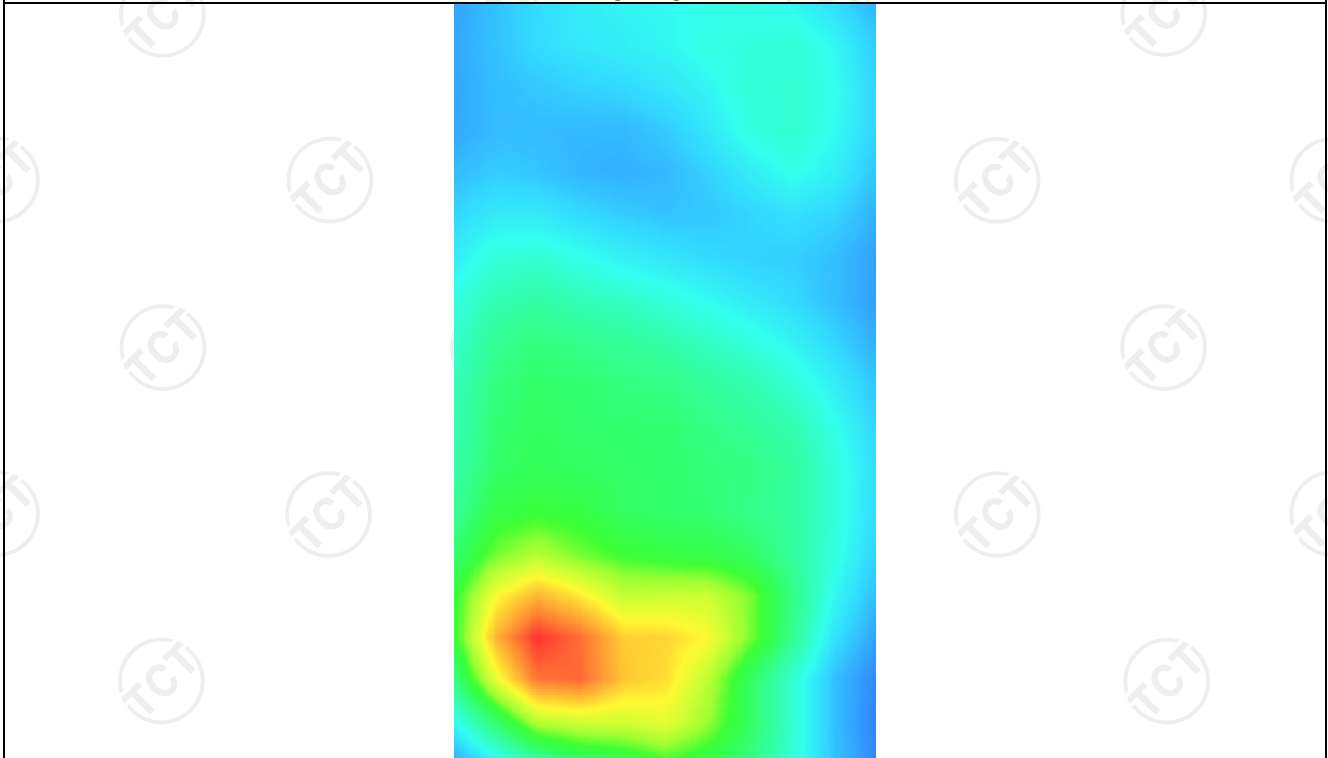
1.008281



Z (mm)	0.00	4.00	9.00	14.00	19.00
SAR (W/Kg)	1.7563	1.0748	0.5588	0.2884	0.1551



Hot spot position



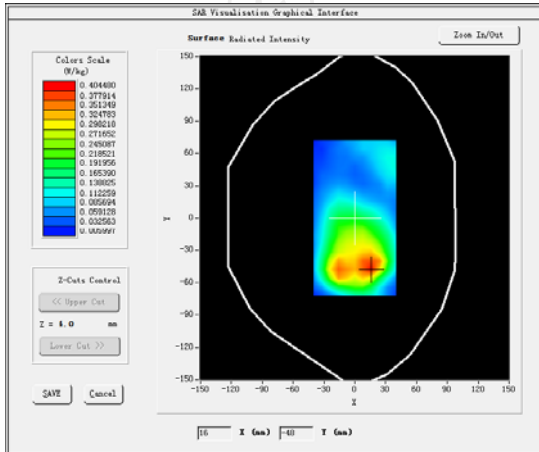
MEASUREMENT 7

Higher Band SAR (Channel 810):

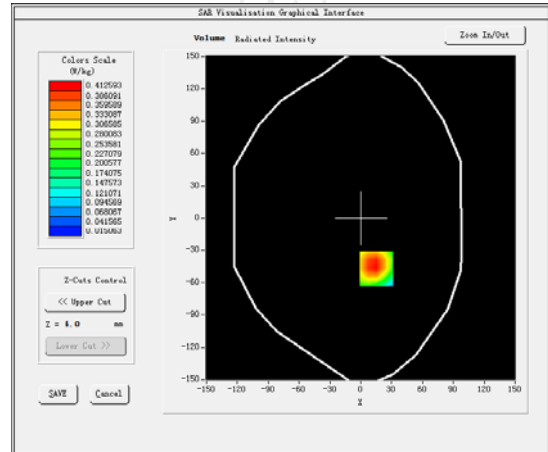
Date: 07/06/2017

Frequency (MHz)	1909.80000
Relative permittivity (real part)	50.741001
Relative permittivity (imaginary part)	14.232400
Conductivity (S/m)	1.486495
Variation (%)	-2.070000
Crest Factor	2.0
Probe Conversion factor	5.01
E-Field Probe:	SSE5 (SN 07/15 EP248)
Area Scan	<u>dx=8mm dy=8mm, h= 5.00 mm</u>
ZoomScan	<u>5x5x7, dx=8mm dy=8mm</u> <u>dz=5mm, Complete/ndx=8mm dy=8mm, h=</u> <u>5.00 mm</u>
Phantom	<u>Validation plane</u>
Device Position	<u>Body back(10mm)</u>
Band	<u>GSM1900(GPRS 4slot hotspot)</u>

SURFACE SAR



VOLUME SAR



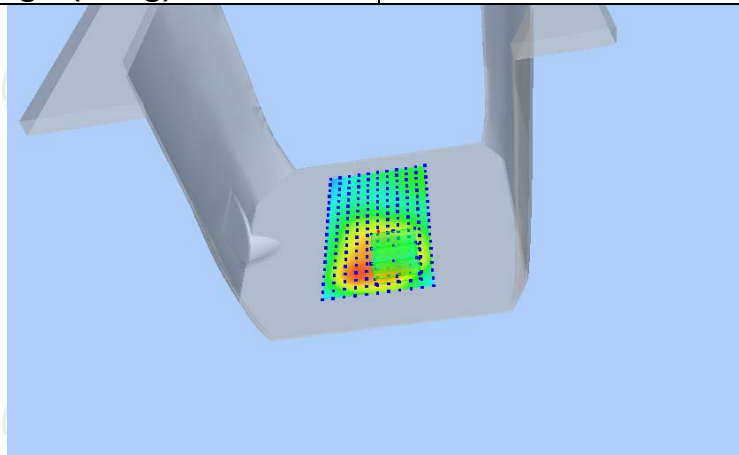
Maximum location: X=15.00, Y=-47.00 SAR Peak: 0.62 W/kg

SAR 10g (W/Kg)

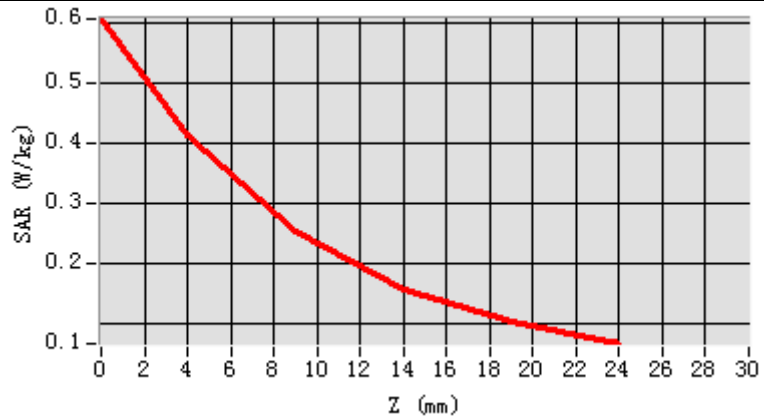
0.235534

SAR 1g (W/Kg)

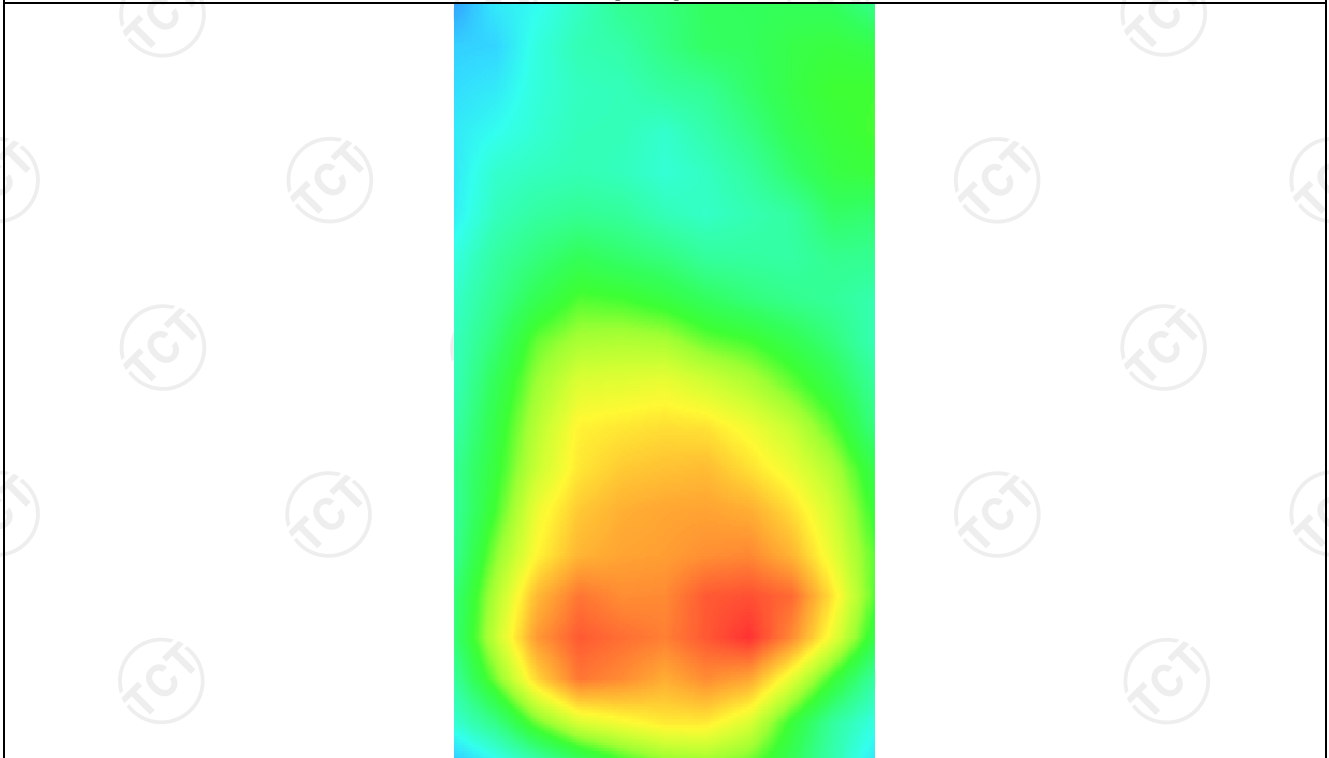
0.421378



Z (mm)	0.00	4.00	9.00	14.00	19.00
SAR (W/Kg)	0.6071	0.4126	0.2520	0.1566	0.1016



Hot spot position



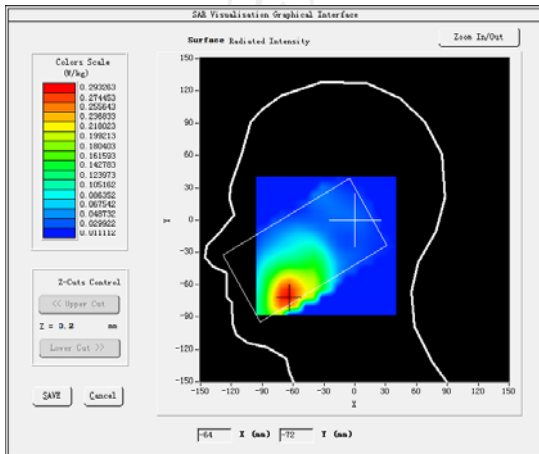
WCDMA Band II
MEASUREMENT 1

Middle Band SAR (Channel 9400):

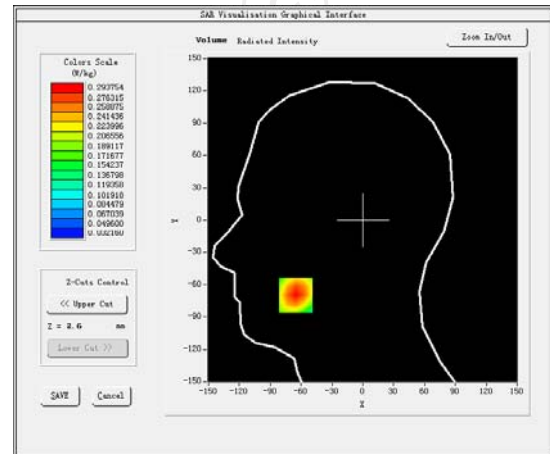
Date: 06/06/2017

Frequency (MHz)	1880.000000
Relative permittivity (real part)	39.076721
Relative permittivity (imaginary part)	12.607061
Conductivity (S/m)	1.350609
Variation (%)	-3.430000
Crest Factor	1.0
Probe Conversion factor	4.85
E-Field Probe:	SSE5 (SN 07/15 EP248)
Area Scan	<u>dx=8mm dy=8mm, h= 5.00 mm</u>
ZoomScan	<u>5x5x7, dx=8mm dy=8mm</u> <u>dz=5mm, Complete/ndx=8mm dy=8mm, h=</u> <u>5.00 mm</u>
Phantom	<u>Right head</u>
Device Position	<u>Cheek</u>
Band	<u>BAND1 WCDMA2100</u>

SURFACE SAR



VOLUME SAR



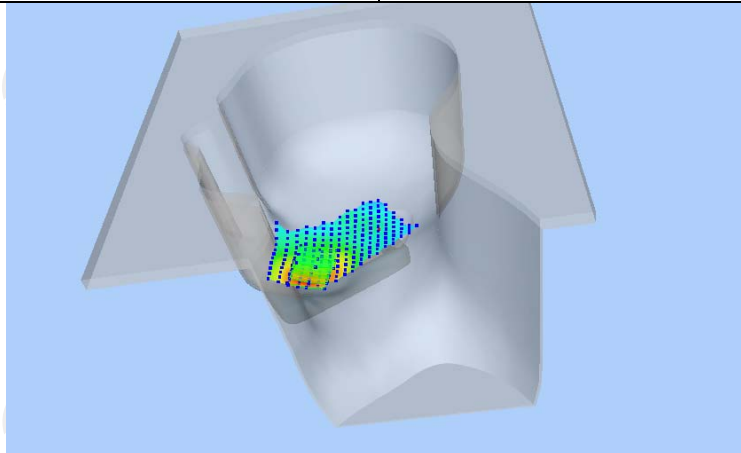
Maximum location: X=-65.00, Y=-70.00 SAR Peak: 0.45 W/kg

SAR 10g (W/Kg)

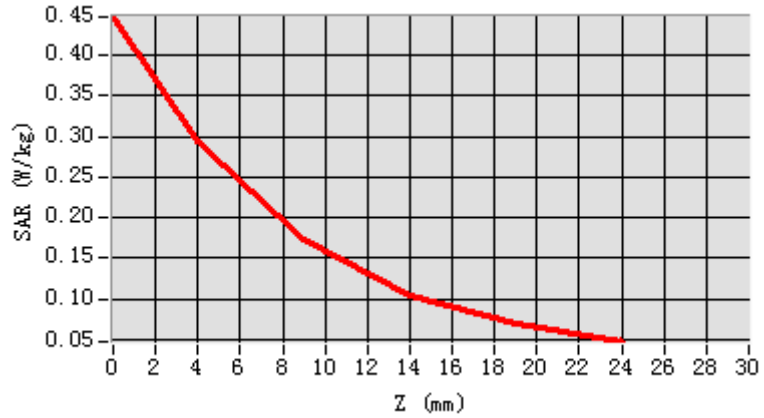
0.167407

SAR 1g (W/Kg)

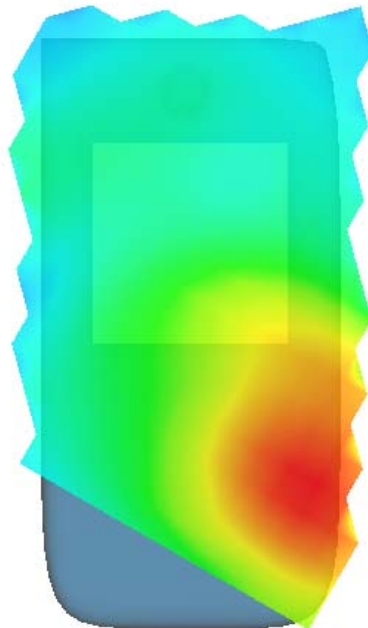
0.279262



Z (mm)	0.00	4.00	9.00	14.00	19.00
SAR (W/Kg)	0.4474	0.2938	0.1723	0.1049	0.0692



Hot spot position



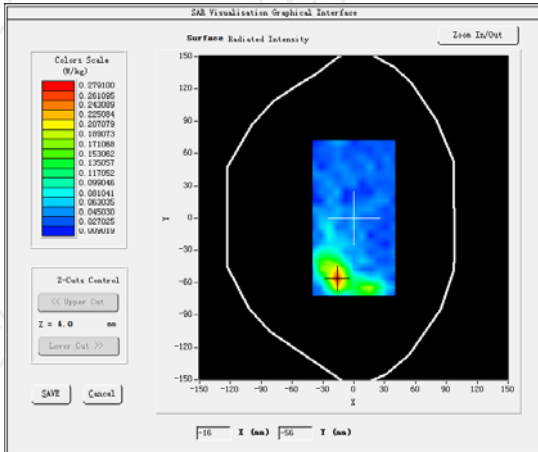
MEASUREMENT 2

Middle Band SAR (Channel 9400):

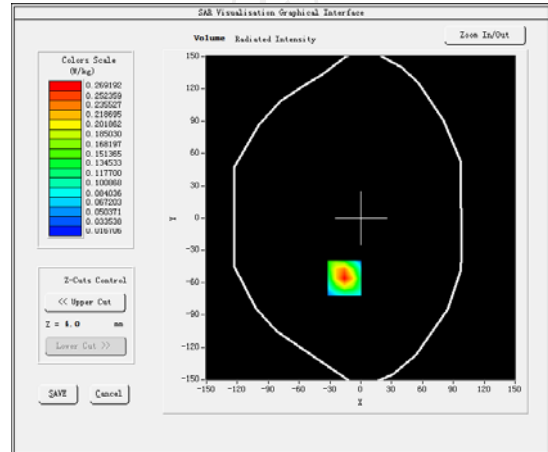
Date: 06/06/2017

Frequency (MHz)	1880.000000
Relative permittivity (real part)	53.320121
Relative permittivity (imaginary part)	14.225400
Conductivity (S/m)	1.500251
Variation (%)	2.750000
Crest Factor	1.0
Probe Conversion factor	5.01
E-Field Probe:	SSE5 (SN 07/15 EP248)
Area Scan	<u>dx=8mm dy=8mm, h= 5.00 mm</u>
ZoomScan	<u>5x5x7,dx=8mm dy=8mm</u> <u>dz=5mm,Complete/ndx=8mm dy=8mm, h=</u> <u>5.00 mm</u>
Phantom	<u>Validation plane</u>
Device Position	<u>Body back(5mm)</u>
Band	<u>BAND1 WCDMA2100</u>

SURFACE SAR



VOLUME SAR



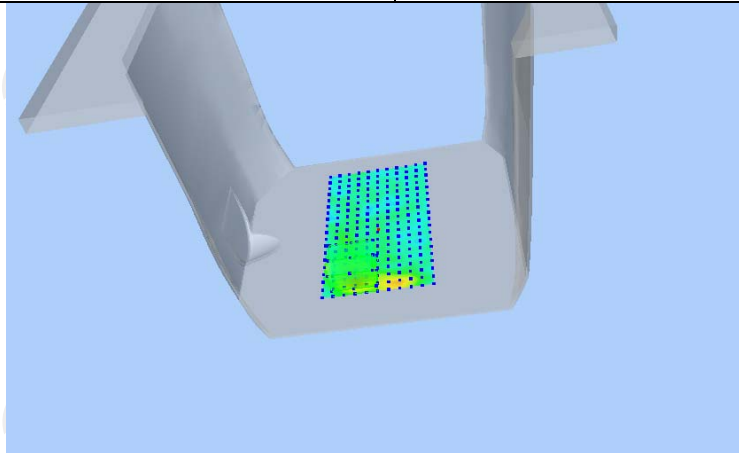
Maximum location: X=-16.00, Y=-56.00 SAR Peak: 0.46 W/kg

SAR 10g (W/Kg)

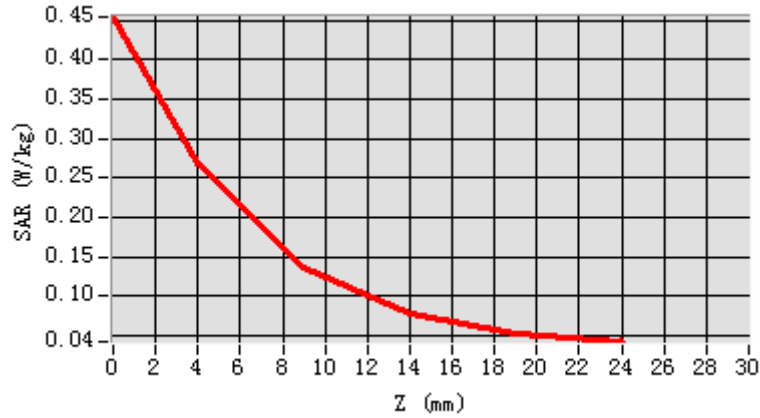
0.132135

SAR 1g (W/Kg)

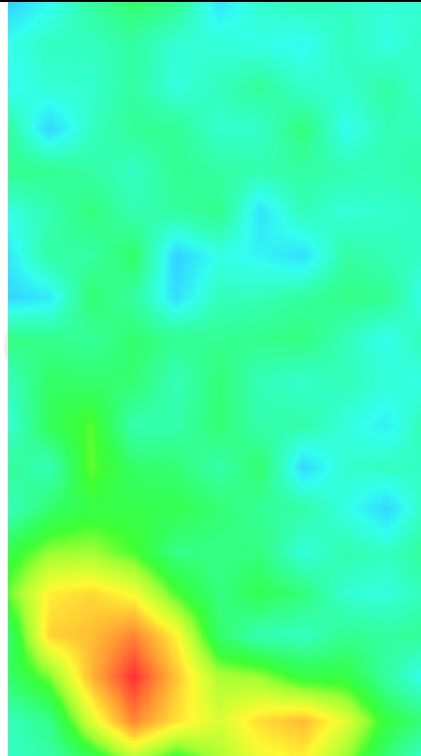
0.251197



Z (mm)	0.00	4.00	9.00	14.00	19.00
SAR (W/Kg)	0.4545	0.2692	0.1380	0.0773	0.0533



Hot spot position



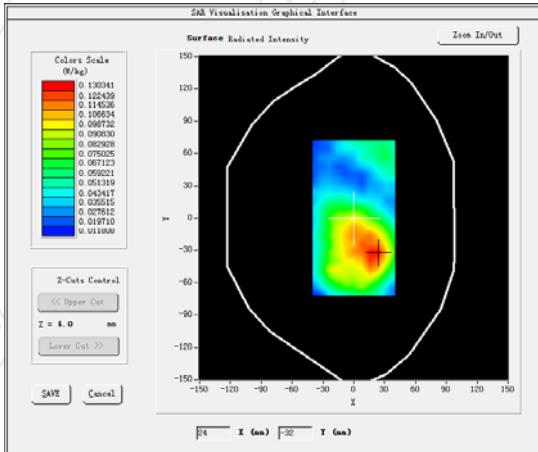
MEASUREMENT 3

Middle Band SAR (Channel 9400):

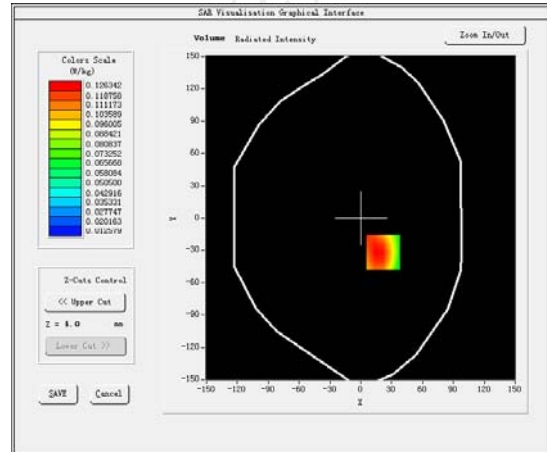
Date: 06/06/2017

Frequency (MHz)	1880.000000
Relative permittivity (real part)	53.320121
Relative permittivity (imaginary part)	14.225400
Conductivity (S/m)	1.500251
Variation (%)	0.990000
Crest Factor	1.0
Probe Conversion factor	5.01
E-Field Probe:	SSE5 (SN 07/15 EP248)
Area Scan	<u>dx=8mm dy=8mm, h= 5.00 mm</u>
ZoomScan	<u>5x5x7, dx=8mm dy=8mm</u> <u>dz=5mm, Complete/ndx=8mm dy=8mm, h=</u> <u>5.00 mm</u>
Phantom	<u>Validation plane</u>
Device Position	<u>Body back(10mm)</u>
Band	<u>BAND1 WCDMA2100(hotspot)</u>

SURFACE SAR



VOLUME SAR



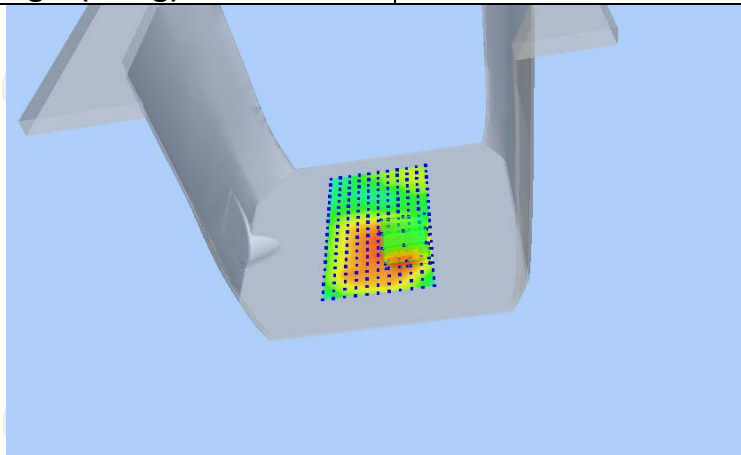
Maximum location: X=22.00, Y=-32.00 SAR Peak: 0.17 W/kg

SAR 10g (W/Kg)

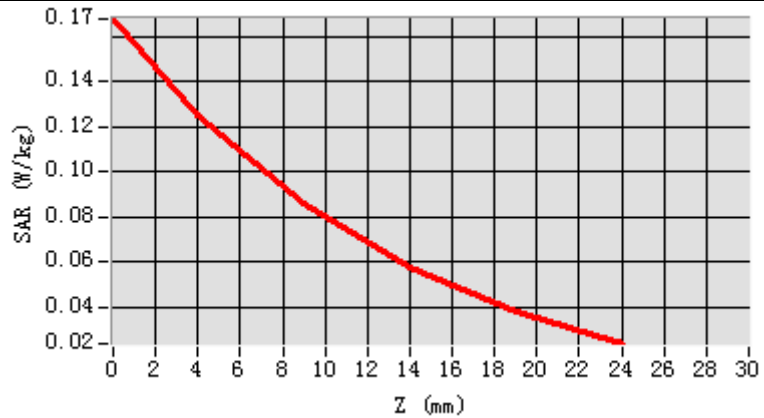
0.081222

SAR 1g (W/Kg)

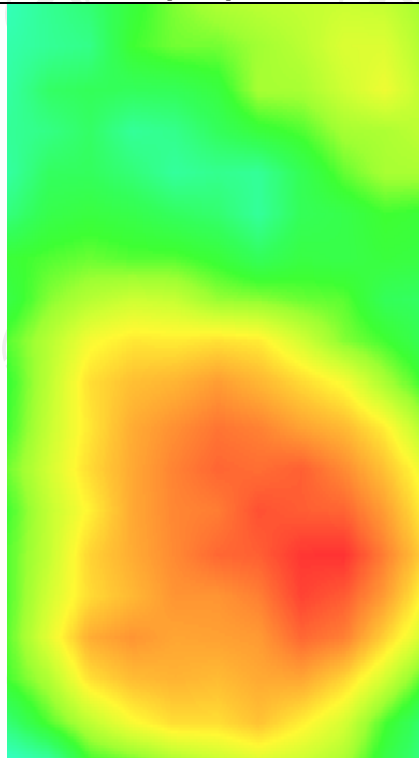
0.122504



Z (mm)	0.00	4.00	9.00	14.00	19.00
SAR (W/Kg)	0.1677	0.1255	0.0859	0.0580	0.0385



Hot spot position



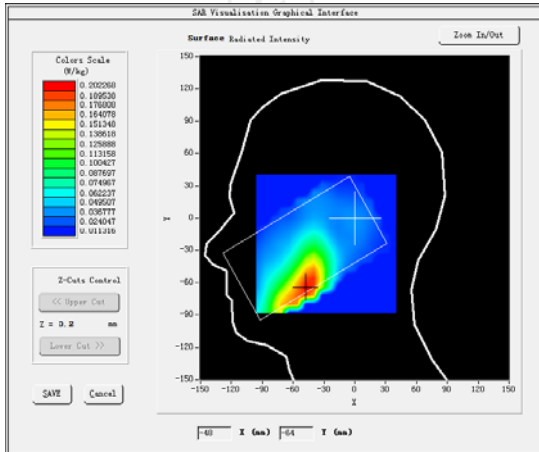
WCDMA Band IV
MEASUREMENT 1

Middle Band SAR (Channel 1413):

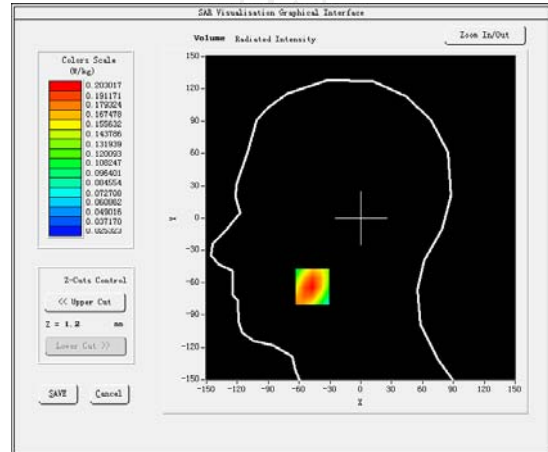
Date: 07/06/2017

Frequency (MHz)	1732.600000
Relative permittivity (real part)	39.076721
Relative permittivity (imaginary part)	12.607061
Conductivity (S/m)	1.337609
Variation (%)	0.350000
Crest Factor	1.0
Probe Conversion factor	4.86
E-Field Probe:	SSE5 (SN 07/15 EP248)
Area Scan	<u>dx=8mm dy=8mm, h= 5.00 mm</u>
ZoomScan	<u>5x5x7, dx=8mm dy=8mm</u> <u>dz=5mm, Complete/ndx=8mm dy=8mm, h=</u> <u>5.00 mm</u>
Phantom	<u>Right head</u>
Device Position	<u>Cheek</u>
Band	<u>BAND1 WCDMA2100</u>

SURFACE SAR



VOLUME SAR



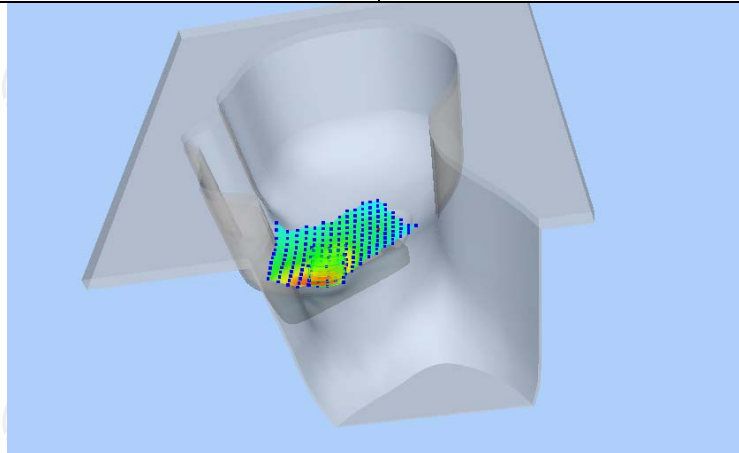
Maximum location: X=-47.00, Y=-64.00 SAR Peak: 0.27 W/kg

SAR 10g (W/Kg)

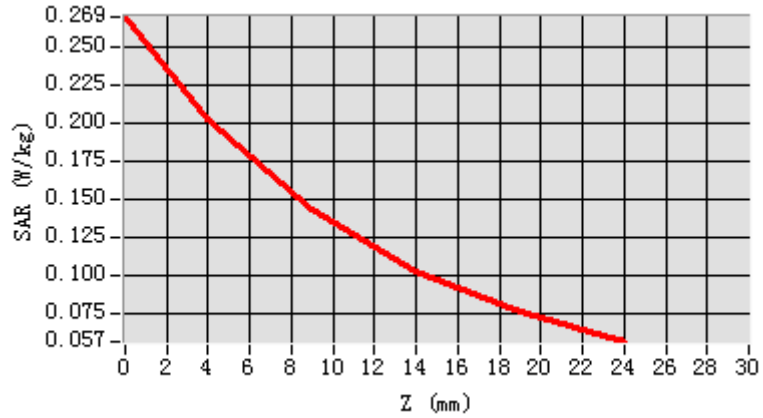
0.128218

SAR 1g (W/Kg)

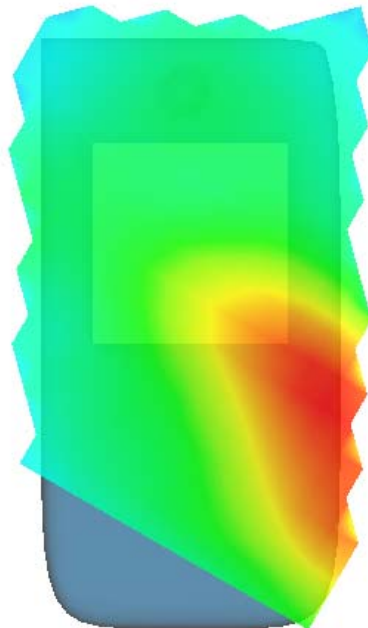
0.193355



Z (mm)	0.00	4.00	9.00	14.00	19.00
SAR (W/Kg)	0.2691	0.2030	0.1433	0.1033	0.0768



Hot spot position



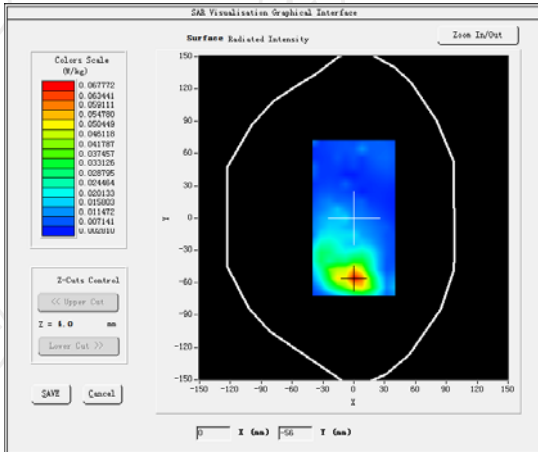
MEASUREMENT 2

Middle Band SAR (Channel 1413):

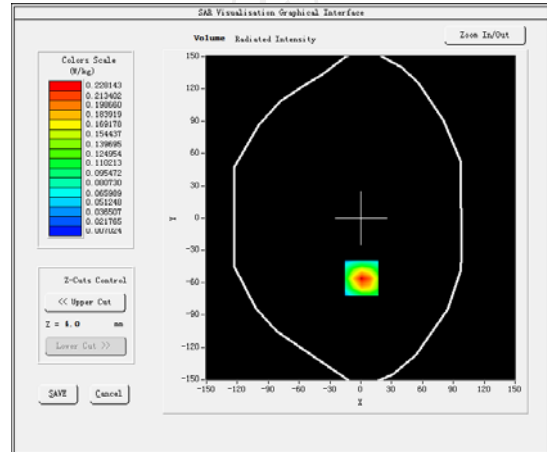
Date: 07/06/2017

Frequency (MHz)	1732.600000
Relative permittivity (real part)	50.741001
Relative permittivity (imaginary part)	14.232400
Conductivity (S/m)	1.486495
Variation (%)	1.410000
Crest Factor	1.0
Probe Conversion factor	5.05
E-Field Probe:	SSE5 (SN 07/15 EP248)
Area Scan	<u>dx=8mm dy=8mm, h= 5.00 mm</u>
ZoomScan	<u>5x5x7, dx=8mm dy=8mm</u> <u>dz=5mm, Complete/ndx=8mm dy=8mm, h=</u> <u>5.00 mm</u>
Phantom	<u>Validation plane</u>
Device Position	<u>Body back(5mm)</u>
Band	<u>BAND1 WCDMA2100</u>

SURFACE SAR



VOLUME SAR



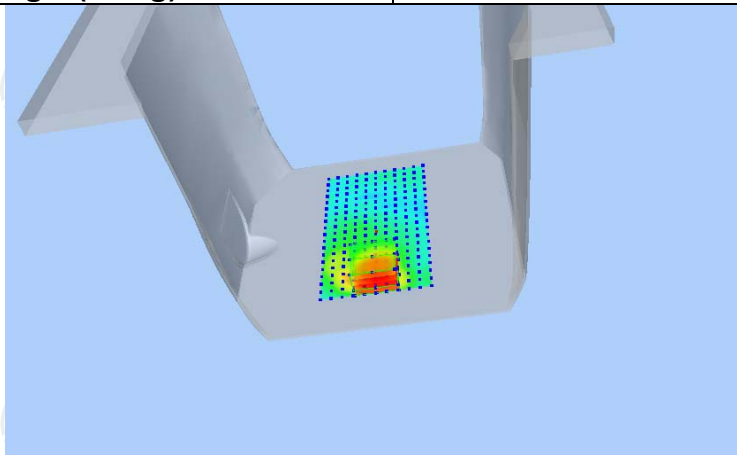
Maximum location: X=1.00, Y=-56.00 SAR Peak: 0.33 W/kg

SAR 10g (W/Kg)

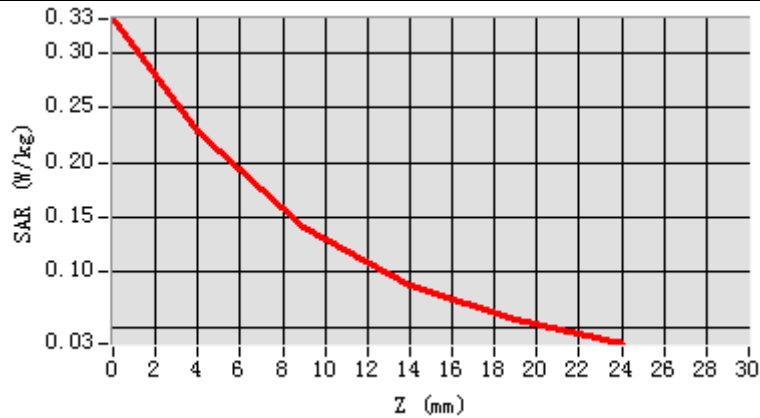
0.117148

SAR 1g (W/Kg)

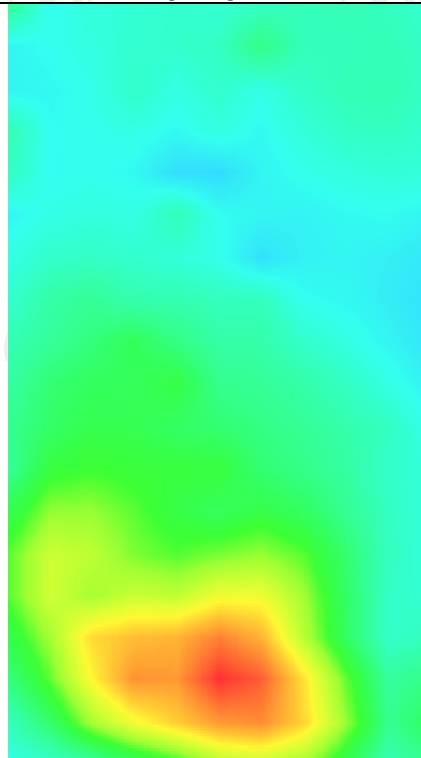
0.211292



Z (mm)	0.00	4.00	9.00	14.00	19.00
SAR (W/Kg)	0.3310	0.2281	0.1413	0.0880	0.0560



Hot spot position



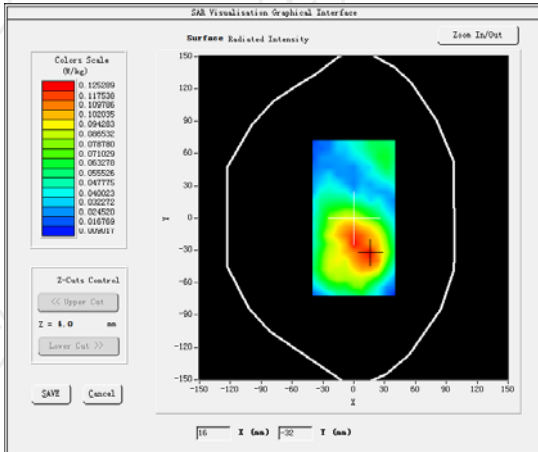
MEASUREMENT 3

Middle Band SAR (Channel 1413):

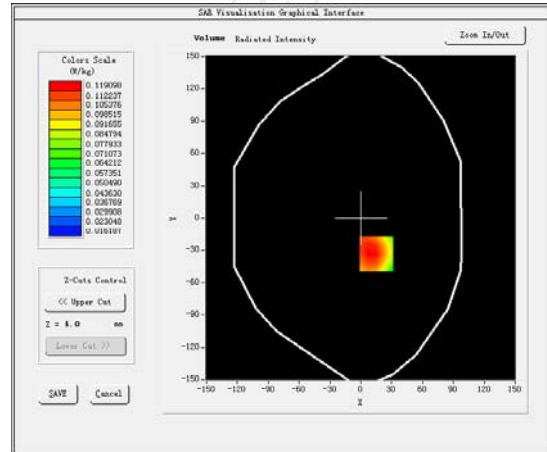
Date: 07/06/2017

Frequency (MHz)	1732.600000
Relative permittivity (real part)	50.741001
Relative permittivity (imaginary part)	14.232400
Conductivity (S/m)	1.486495
Variation (%)	-2.110000
Crest Factor	1.0
Probe Conversion factor	5.05
E-Field Probe:	SSE5 (SN 07/15 EP248)
Area Scan	<u>dx=8mm dy=8mm, h= 5.00 mm</u>
ZoomScan	<u>5x5x7, dx=8mm dy=8mm</u> <u>dz=5mm, Complete/ndx=8mm dy=8mm, h=</u> <u>5.00 mm</u>
Phantom	<u>Validation plane</u>
Device Position	<u>Body back(10mm)</u>
Band	<u>BAND1 WCDMA2100(hotspot)</u>

SURFACE SAR



VOLUME SAR



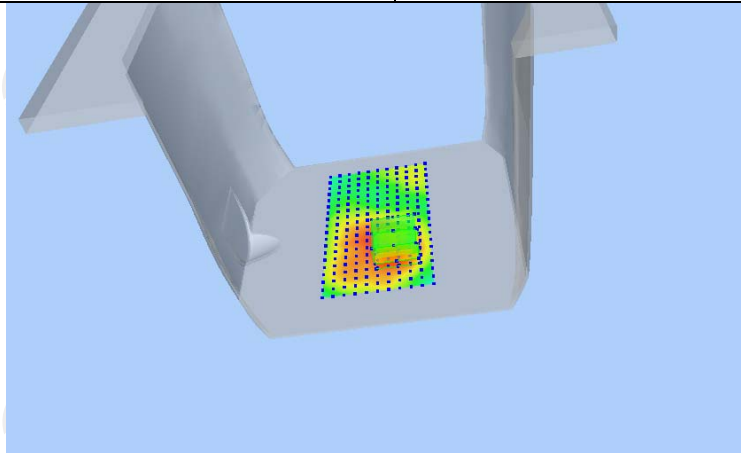
Maximum location: X=15.00, Y=-33.00 SAR Peak: 0.15 W/kg

SAR 10g (W/Kg)

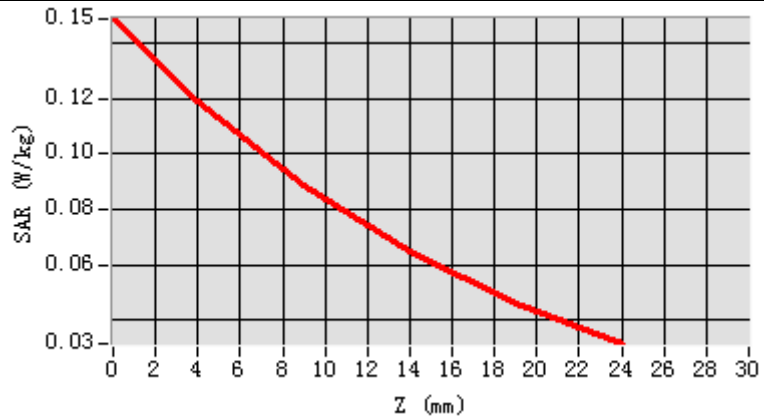
0.080209

SAR 1g (W/Kg)

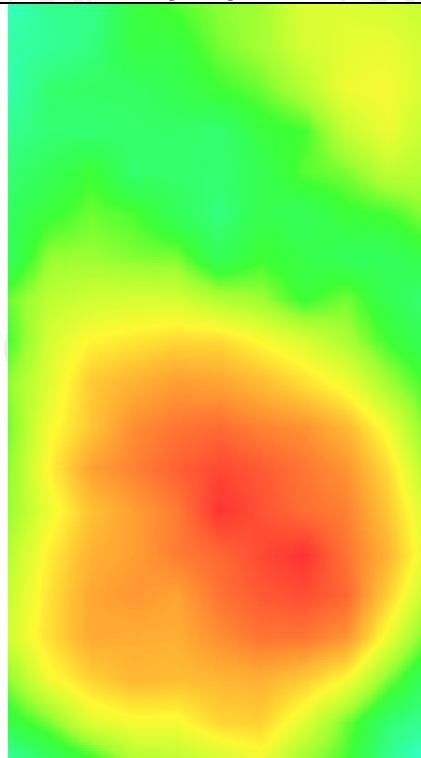
0.115722



Z (mm)	0.00	4.00	9.00	14.00	19.00
SAR (W/Kg)	0.1486	0.1186	0.0883	0.0646	0.0462



Hot spot position



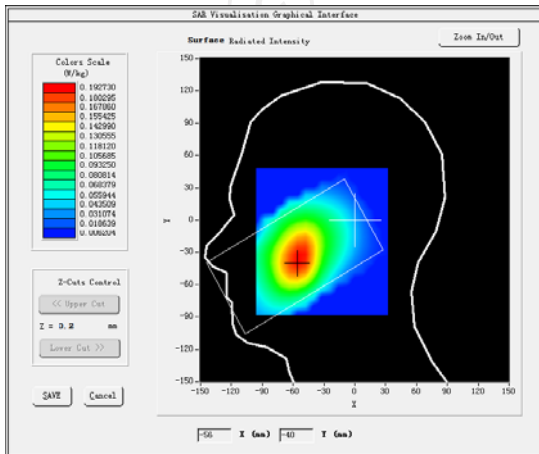
WCDMA Band V
MEASUREMENT 1

Middle Band SAR (Channel 4182):

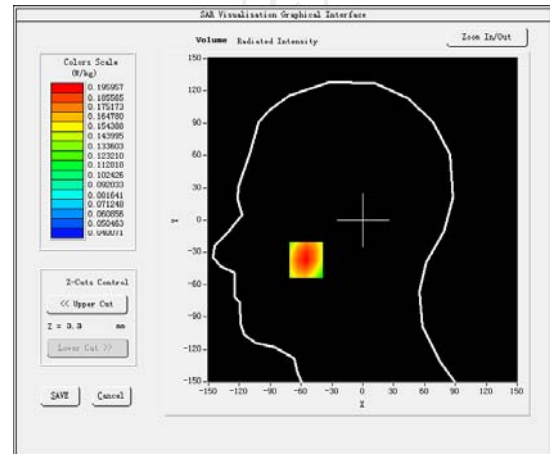
Date: 05/05/2017

Frequency (MHz)	836.600000
Relative permittivity (real part)	41.417760
Relative permittivity (imaginary part)	18.129852
Conductivity (S/m)	0.874923
Variation (%)	0.660000
Crest Factor:	1.0
Probe Conversion factor	5.50
E-Field Probe:	SSE5 (SN 07/15 EP248)
Area Scan	<u>dx=8mm dy=8mm, h= 5.00 mm</u>
ZoomScan	<u>5x5x7, dx=8mm dy=8mm</u> <u>dz=5mm, Complete/ndx=8mm dy=8mm, h=</u> <u>5.00 mm</u>
Phantom	<u>Left head</u>
Device Position	<u>Cheek</u>
Band	<u>BAND5 WCDMA850</u>

SURFACE SAR



VOLUME SAR



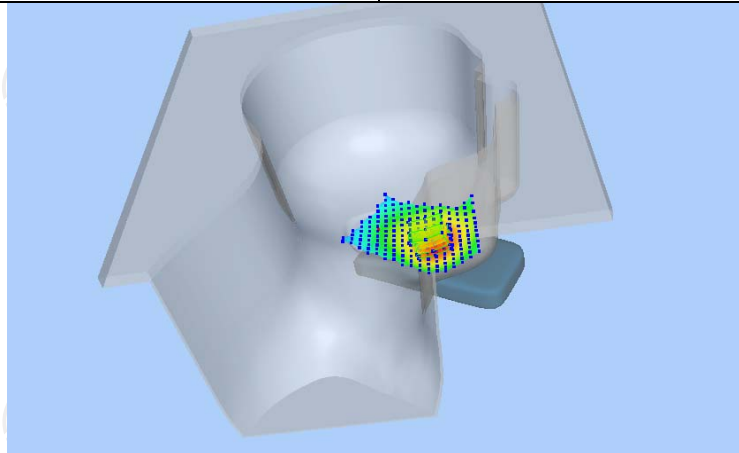
Maximum location: X=-55.00, Y=-37.00 SAR Peak: 0.24 W/kg

SAR 10g (W/Kg)

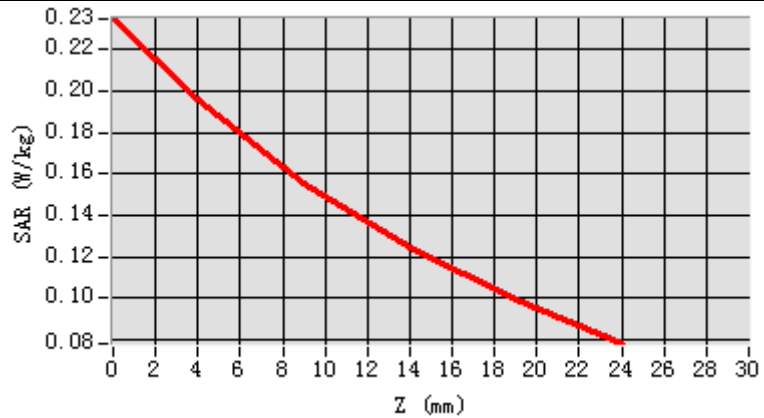
0.140475

SAR 1g (W/Kg)

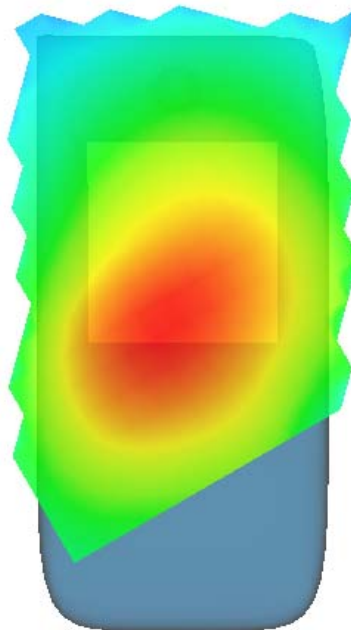
0.188721



Z (mm)	0.00	4.00	9.00	14.00	19.00
SAR (W/Kg)	0.2350	0.1960	0.1559	0.1243	0.0992



Hot spot position



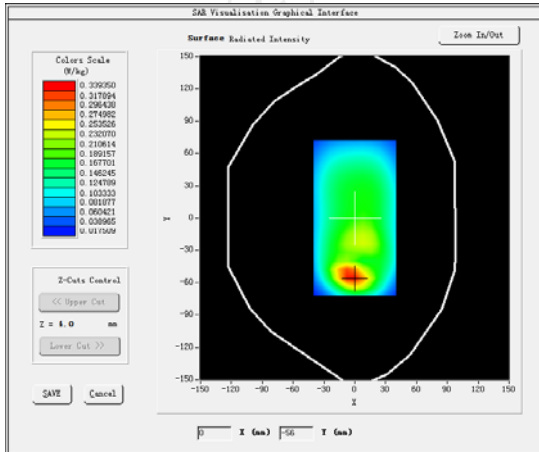
MEASUREMENT 2

Middle Band SAR (Channel 4182):

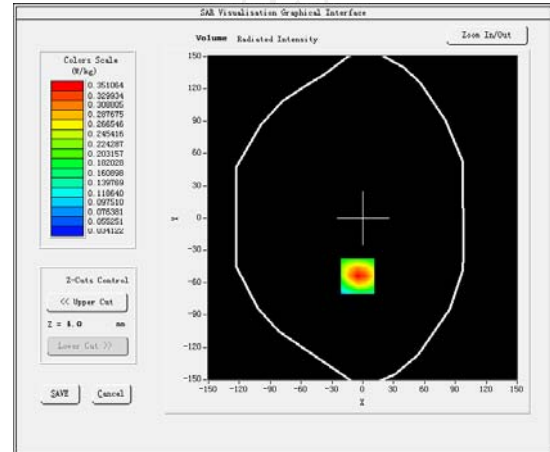
Date: 05/05/2017

Frequency (MHz)	836.400024
Relative permittivity (real part)	55.242077
Relative permittivity (imaginary part)	21.378187
Conductivity (S/m)	0.940253
Variation (%)	0.110000
Crest Factor:	1.0
Probe Conversion factor	5.65
E-Field Probe:	SSE5 (SN 07/15 EP248)
Area Scan	<u>dx=8mm dy=8mm, h= 5.00 mm</u>
ZoomScan	<u>5x5x7, dx=8mm dy=8mm</u> <u>dz=5mm, Complete/ndx=8mm dy=8mm, h=</u> <u>5.00 mm</u>
Phantom	<u>Validation plane</u>
Device Position	<u>Body back(5mm)</u>
Band	<u>BAND5 WCDMA850</u>

SURFACE SAR



VOLUME SAR



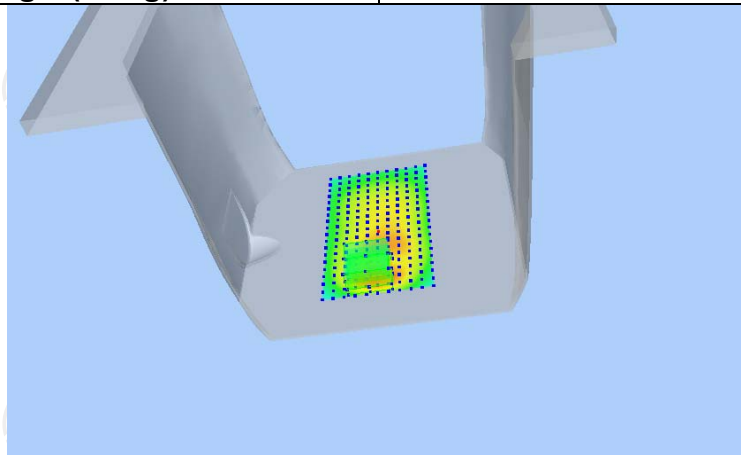
Maximum location: X=-5.00, Y=-54.00 SAR Peak: 0.53 W/kg

SAR 10g (W/Kg)

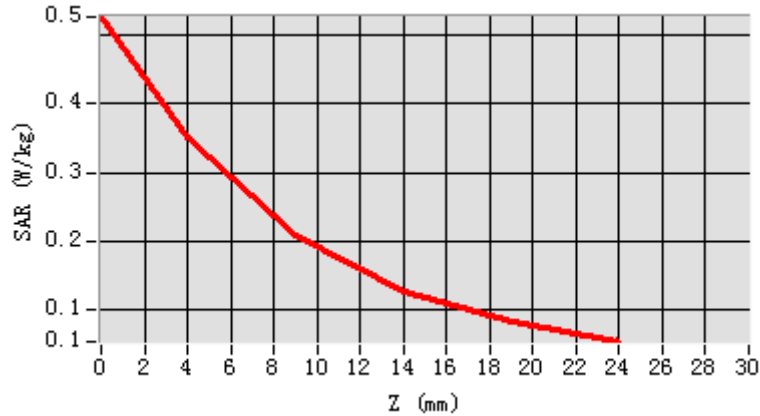
0.190772

SAR 1g (W/Kg)

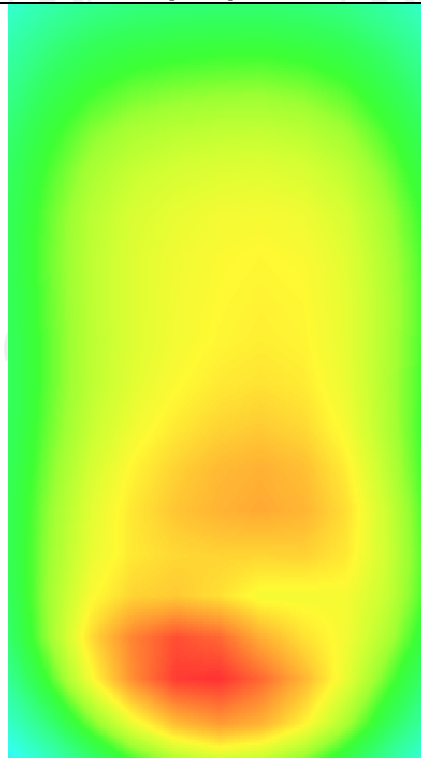
0.331372



Z (mm)	0.00	4.00	9.00	14.00	19.00
SAR (W/Kg)	0.5258	0.3511	0.2097	0.1282	0.0829



Hot spot position



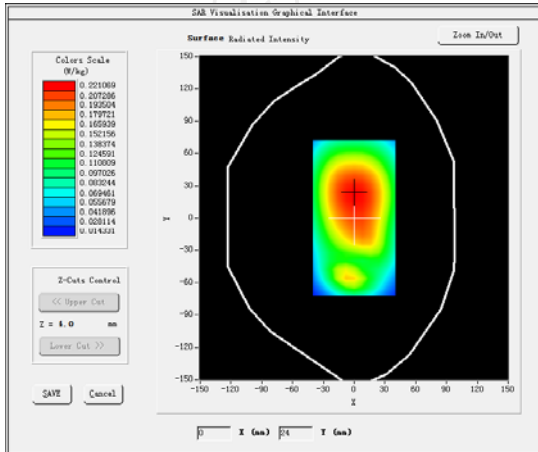
MEASUREMENT 3

Middle Band SAR (Channel 4182):

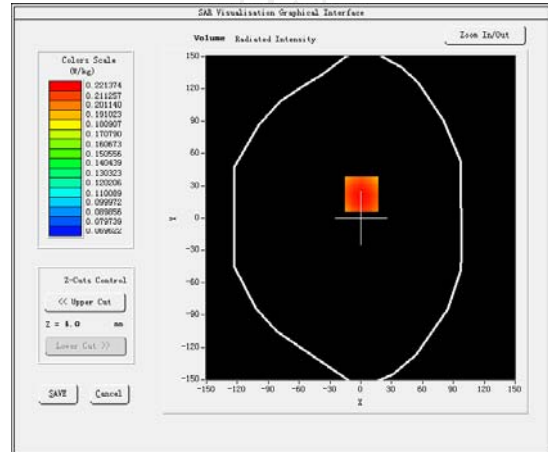
Date: 05/05/2017

Frequency (MHz)	836.400024
Relative permittivity (real part)	55.242077
Relative permittivity (imaginary part)	21.378187
Conductivity (S/m)	0.940253
Variation (%)	0.420000
Crest Factor:	1.0
Probe Conversion factor	5.65
E-Field Probe:	SSE5 (SN 07/15 EP248)
Area Scan	<u>dx=8mm dy=8mm, h= 5.00 mm</u>
ZoomScan	<u>5x5x7, dx=8mm dy=8mm</u> <u>dz=5mm, Complete/ndx=8mm dy=8mm,</u> <u>h= 5.00 mm</u>
Phantom	<u>Validation plane</u>
Device Position	<u>Body back(10mm)</u>
Band	<u>BAND5 WCDMA850(hotspot)</u>

SURFACE SAR



VOLUME SAR



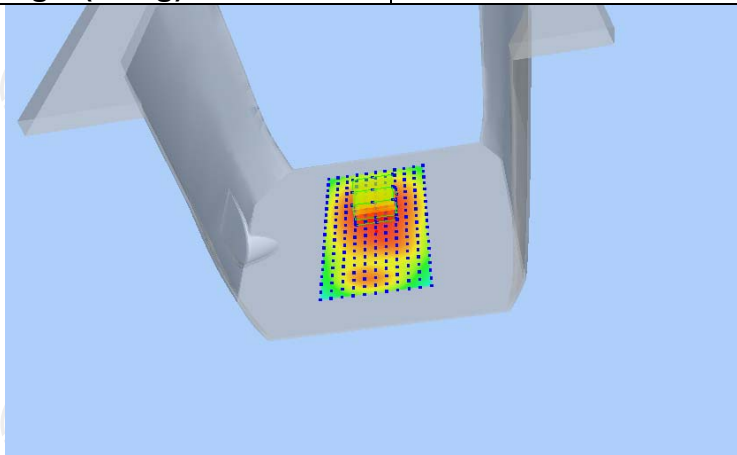
Maximum location: X=1.00, Y=22.00 SAR Peak: 0.26 W/kg

SAR 10g (W/Kg)

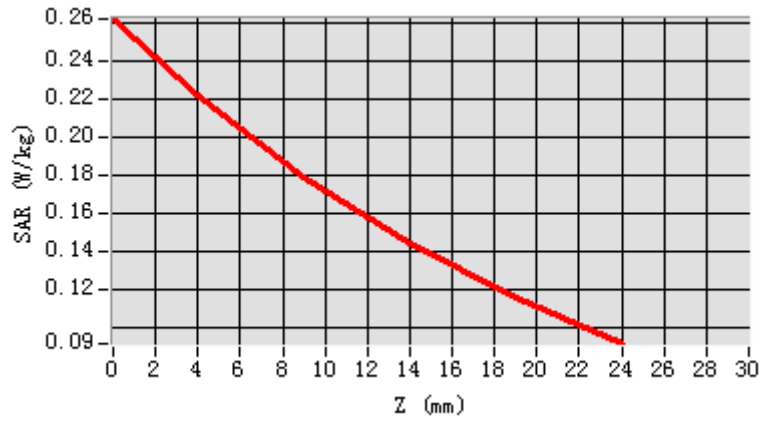
0.168199

SAR 1g (W/Kg)

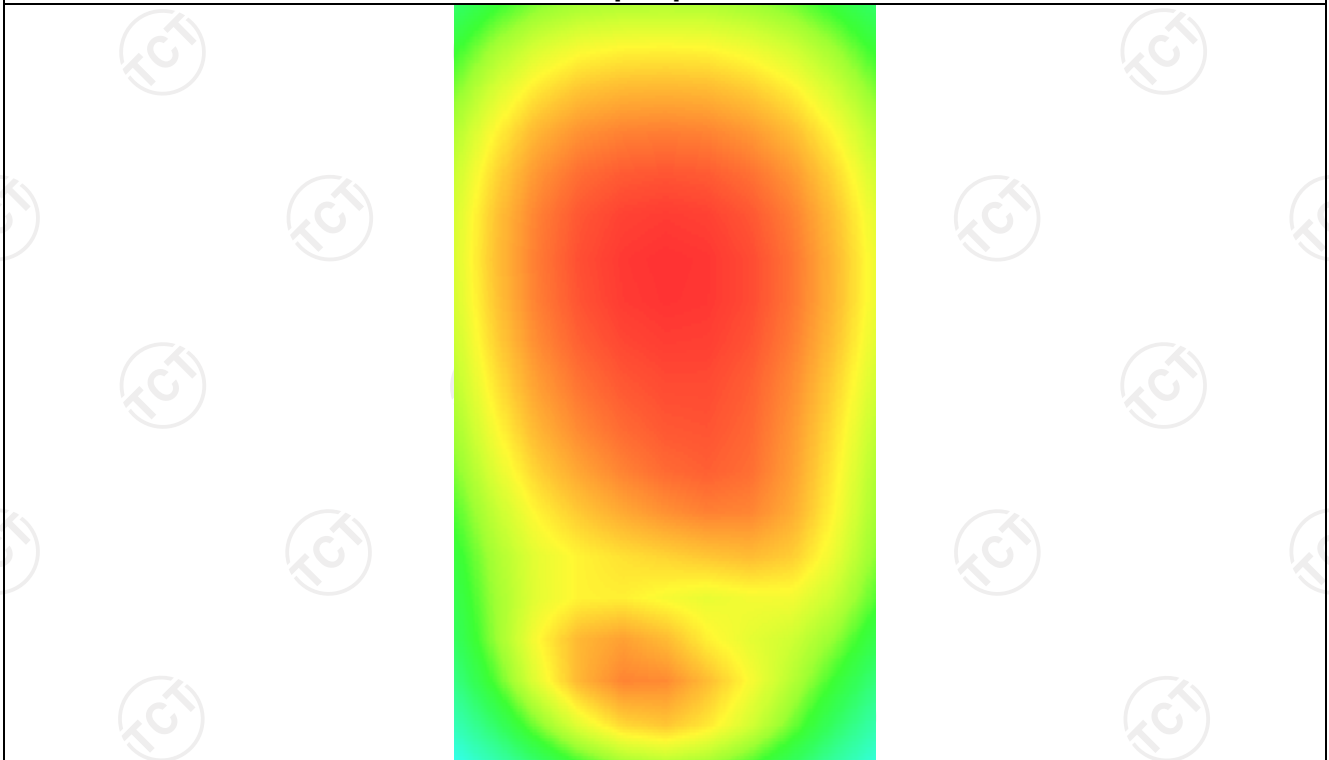
0.216306



Z (mm)	0.00	4.00	9.00	14.00	19.00
SAR (W/Kg)	0.2616	0.2214	0.1790	0.1443	0.1159



Hot spot position



LTE Band 2

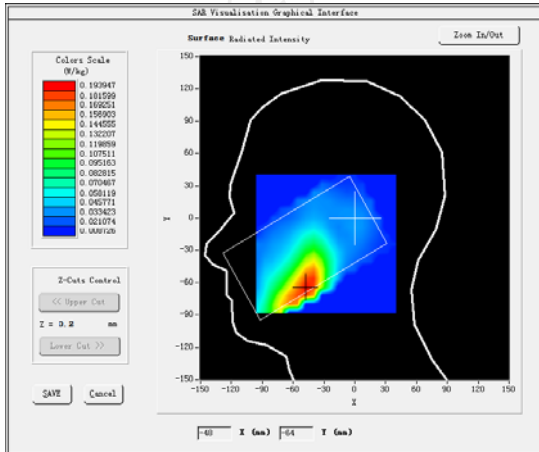
MEASUREMENT 1

Middle Band SAR (Channel 19100):

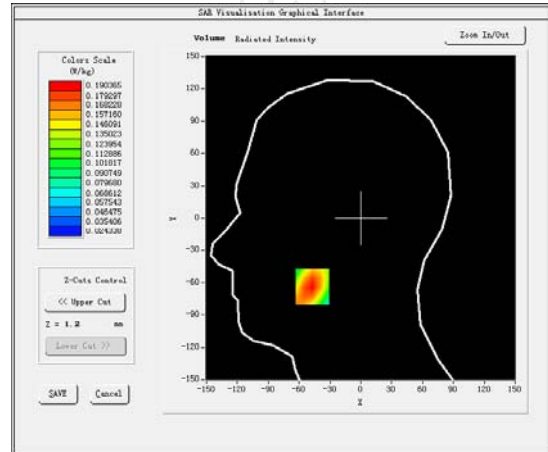
Date: 07/06/2017

Frequency (MHz)	1900.000000
Relative permittivity (real part)	39.076721
Relative permittivity (imaginary part)	12.607061
Conductivity (S/m)	1.367609
Variation (%)	0.430000
Crest Factor	1.0
Probe Conversion factor	4.85
E-Field Probe:	SSE5 (SN 07/15 EP248)
Area Scan	<u>dx=8mm dy=8mm, h= 5.00 mm</u>
ZoomScan	<u>5x5x7, dx=8mm dy=8mm</u> <u>dz=5mm, Complete/ndx=8mm dy=8mm, h=</u> <u>5.00 mm</u>
Phantom	<u>Right head</u>
Device Position	<u>Cheek</u>
Band	<u>LTE band 2 (50 RB#25)</u>

SURFACE SAR



VOLUME SAR



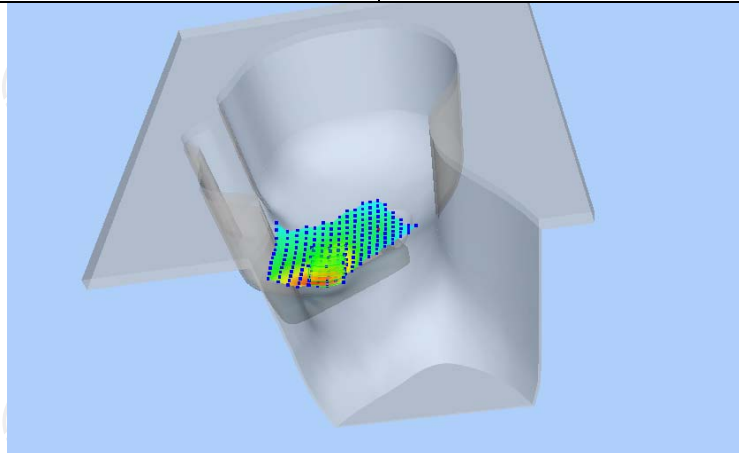
Maximum location: X=-47.00, Y=-64.00 SAR Peak: 0.25 W/kg

SAR 10g (W/Kg)

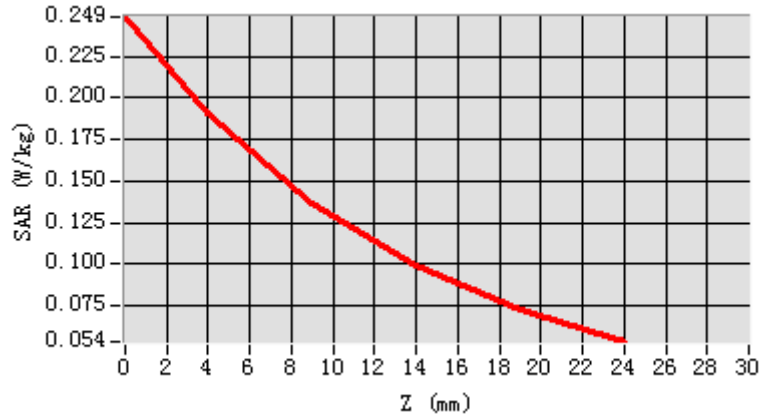
0.121009

SAR 1g (W/Kg)

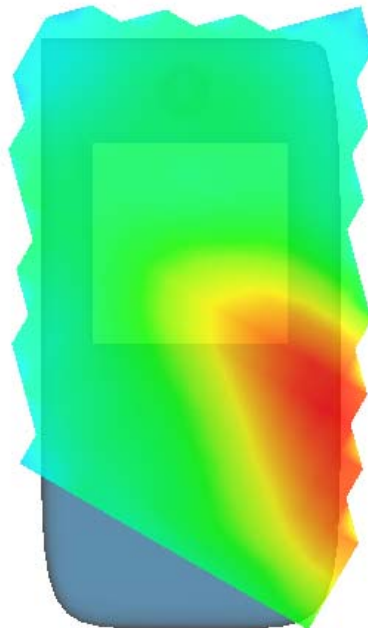
0.181344



Z (mm)	0.00	4.00	9.00	14.00	19.00
SAR (W/Kg)	0.2486	0.1904	0.1364	0.0990	0.0731



Hot spot position



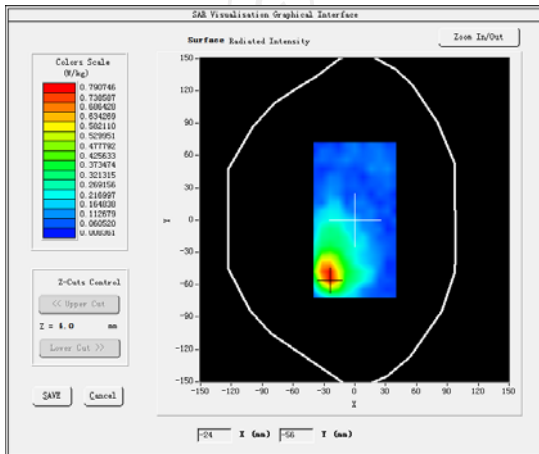
MEASUREMENT 2

Middle Band SAR (Channel 19100):

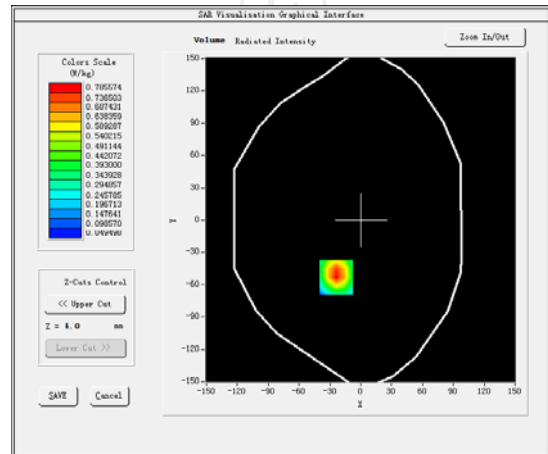
Date: 07/07/2017

Frequency (MHz)	1900.000000
Relative permittivity (real part)	53.309999
Relative permittivity (imaginary part)	14.329440
Conductivity (S/m)	1.510354
Variation (%)	-4.050000
Crest Factor	1.0
Probe Conversion factor	5.01
E-Field Probe:	SSE5 (SN 07/15 EP248)
Area Scan	<u>dx=8mm dy=8mm, h= 5.00 mm</u>
ZoomScan	<u>5x5x7, dx=8mm dy=8mm</u> <u>dz=5mm, Complete/ndx=8mm dy=8mm, h=</u> <u>5.00 mm</u>
Phantom	<u>Validation plane</u>
Device Position	<u>Body back(5mm)</u>
Band	<u>LTE band 2 (50 RB#25)</u>

SURFACE SAR



VOLUME SAR



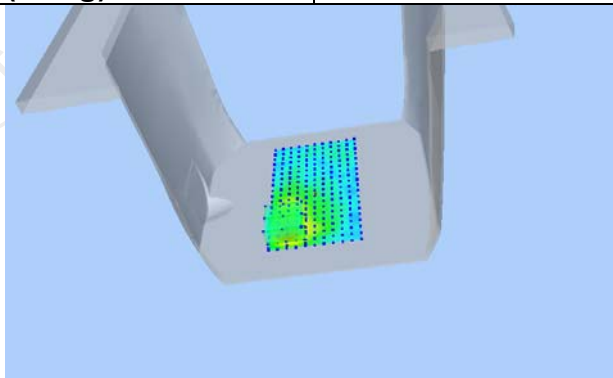
Maximum location: X=-24.00, Y=-53.00 SAR Peak: 1.25 W/kg

SAR 10g (W/Kg)

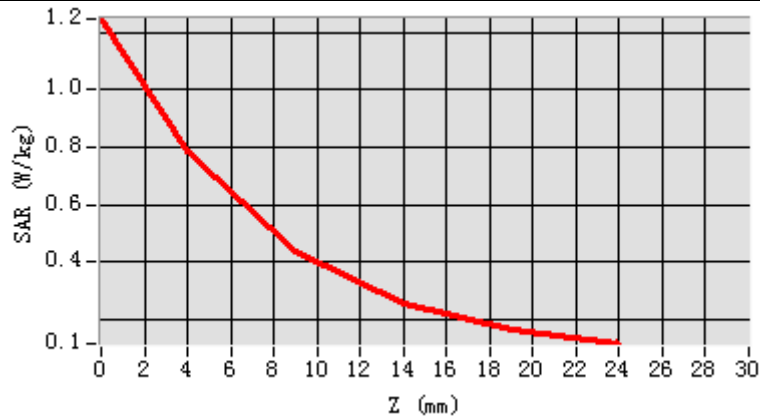
0.412616

SAR 1g (W/Kg)

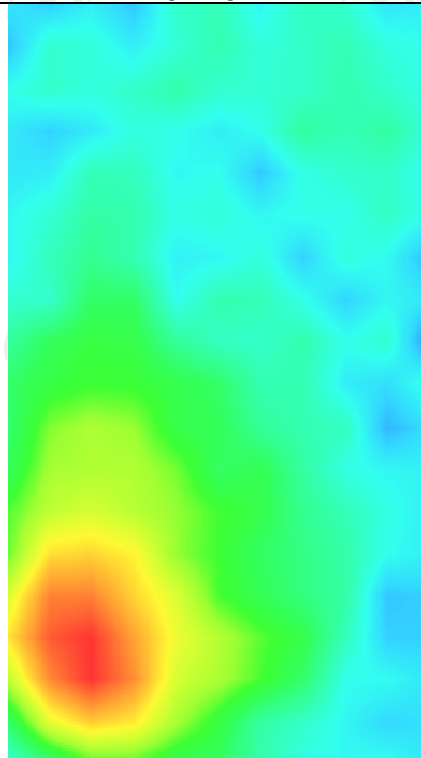
0.743271



Z (mm)	0.00	4.00	9.00	14.00	19.00
SAR (W/Kg)	1.2462	0.7856	0.4360	0.2537	0.1653



Hot spot position



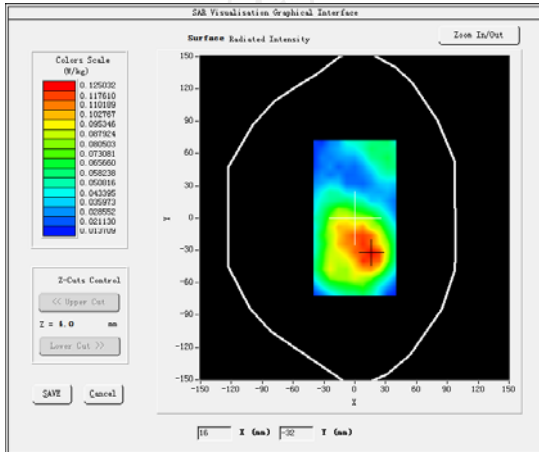
MEASUREMENT 3

Middle Band SAR (Channel 19100):

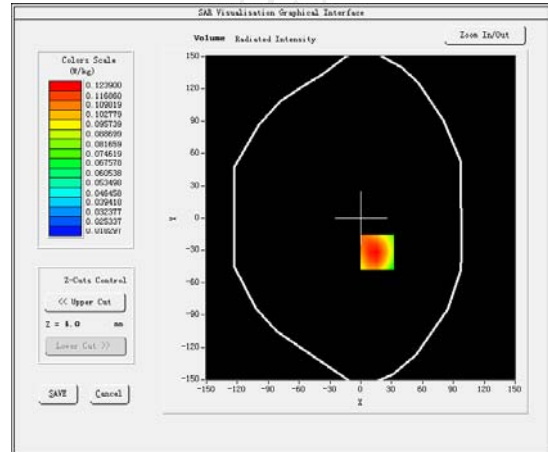
Date: 07/06/2017

Frequency (MHz)	1904.500000
Relative permittivity (real part)	53.309999
Relative permittivity (imaginary part)	14.329440
Conductivity (S/m)	1.510354
Variation (%)	4.540000
Crest Factor	1.0
Probe Conversion factor	5.01
E-Field Probe:	SSE5 (SN 07/15 EP248)
Area Scan	<u>dx=8mm dy=8mm, h= 5.00 mm</u>
ZoomScan	<u>5x5x7, dx=8mm dy=8mm</u> <u>dz=5mm, Complete/ndx=8mm dy=8mm, h=</u> <u>5.00 mm</u>
Phantom	<u>Validation plane</u>
Device Position	<u>Body back (hotspot 10mm)</u>
Band	<u>LTE band 2 (50 RB#25)</u>

SURFACE SAR



VOLUME SAR



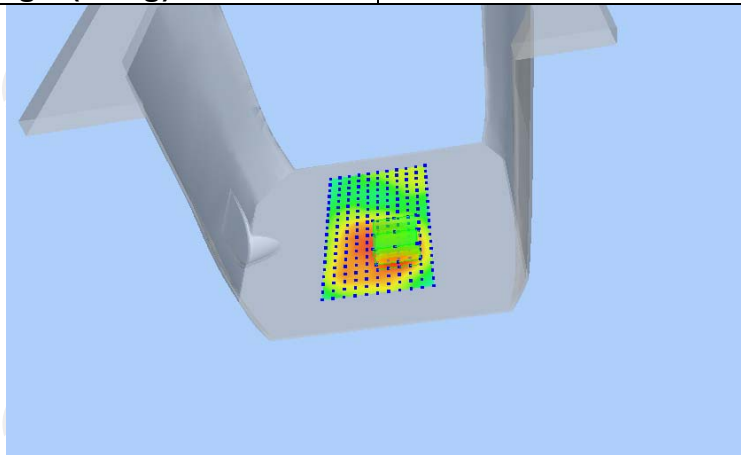
Maximum location: X=16.00, Y=-32.00 SAR Peak: 0.17 W/kg

SAR 10g (W/Kg)

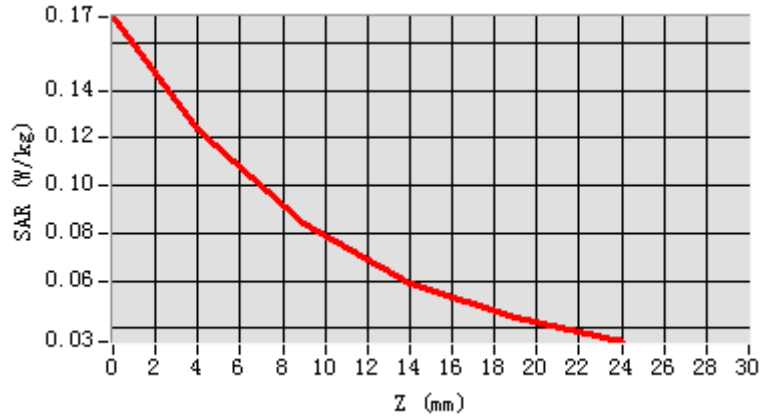
0.079652

SAR 1g (W/Kg)

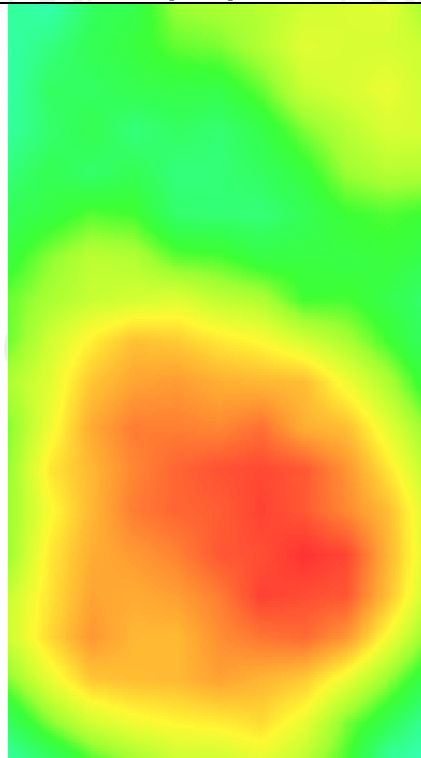
0.141303



Z (mm)	0.00	4.00	9.00	14.00	19.00
SAR (W/Kg)	0.1707	0.1239	0.0839	0.0593	0.0445



Hot spot position



LTE Band 4

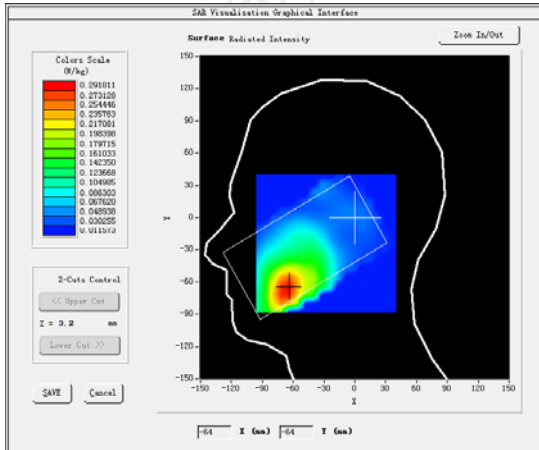
MEASUREMENT 1

Lower Band SAR (Channel 20050):

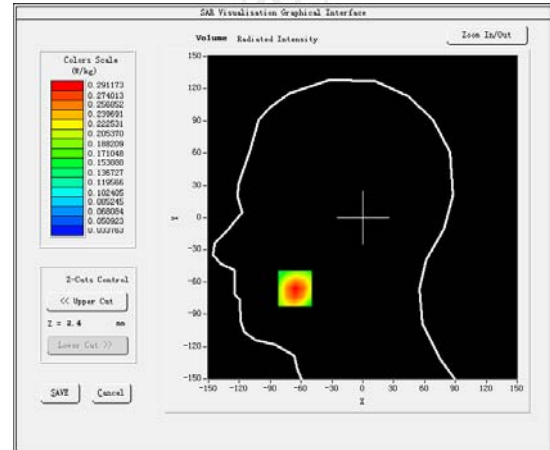
Date: 06/07/2016

Frequency (MHz)	1720.000000
Relative permittivity (real part)	39.101249
Relative permittivity (imaginary part)	12.468850
Conductivity (S/m)	1.350792
Variation (%)	1.360000
Crest Factor	1.0
Probe Conversion factor	4.38
E-Field Probe:	SSE5 (SN 07/15 EP248)
Area Scan	<u>dx=8mm dy=8mm, h= 5.00 mm</u>
ZoomScan	<u>5x5x7, dx=8mm dy=8mm</u> <u>dz=5mm, Complete/ndx=8mm dy=8mm, h=</u> <u>5.00 mm</u>
Phantom	<u>Right head</u>
Device Position	<u>Cheek</u>
Band	<u>LTE band 4(50RB#25)</u>

SURFACE SAR



VOLUME SAR



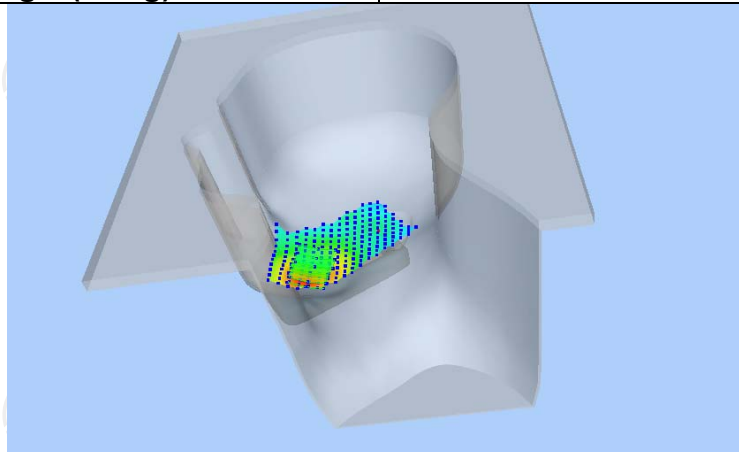
Maximum location: X=-66.00, Y=-66.00 SAR Peak: 0.49 W/kg

SAR 10g (W/Kg)

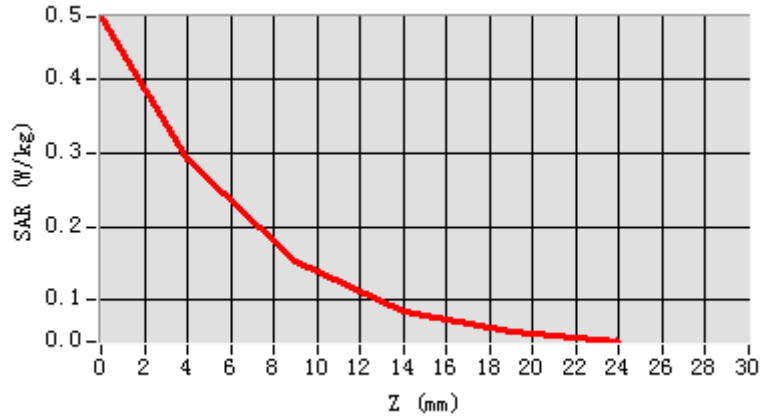
0.160885

SAR 1g (W/Kg)

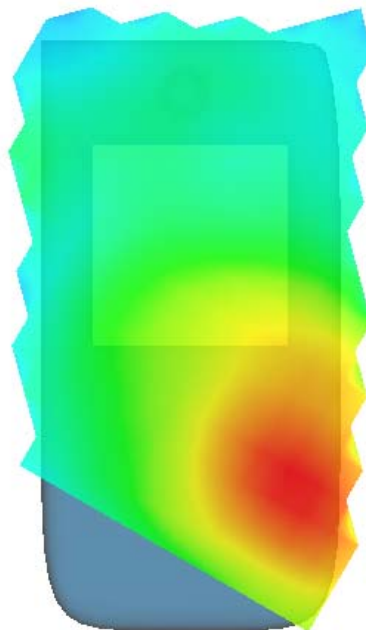
0.278256



Z (mm)	0.00	4.00	9.00	14.00	19.00
SAR (W/Kg)	0.4843	0.2912	0.1520	0.0854	0.0573



Hot spot position



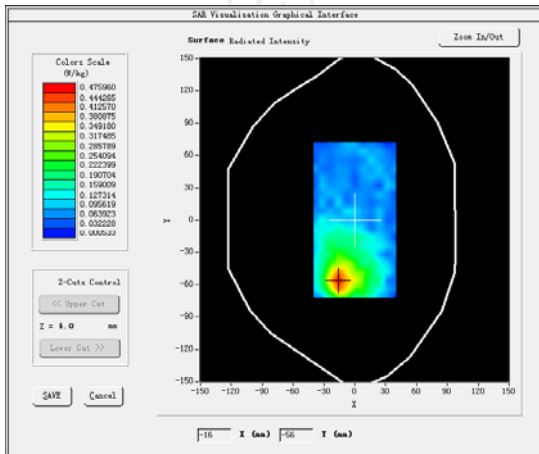
MEASUREMENT 2

Lower Band SAR (Channel 20050):

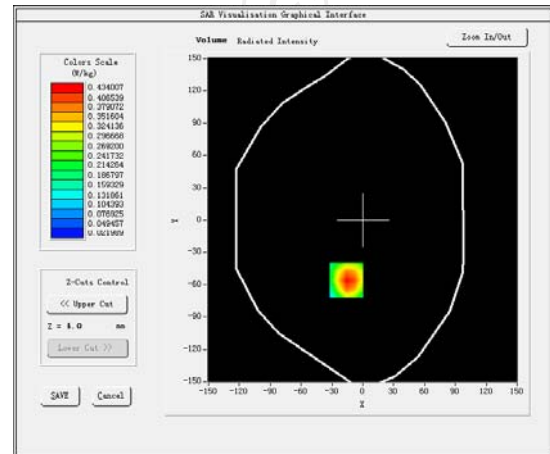
Date: 06/07/2017

Frequency (MHz)	1720.000000
Relative permittivity (real part)	53.321249
Relative permittivity (imaginary part)	12.468850
Conductivity (S/m)	1.502592
Variation (%)	-2.820000
Crest Factor	1.0
Probe Conversion factor	4.52
E-Field Probe:	SSE5 (SN 07/15 EP248)
Area Scan	<u>dx=8mm dy=8mm, h= 5.00 mm</u>
ZoomScan	<u>5x5x7, dx=8mm dy=8mm</u> <u>dz=5mm, Complete/ndx=8mm dy=8mm, h=</u> <u>5.00 mm</u>
Phantom	<u>Validation plane</u>
Device Position	<u>Body back(5mm)</u>
Band	<u>LTE band 4(50RB#25)</u>

SURFACE SAR



VOLUME SAR



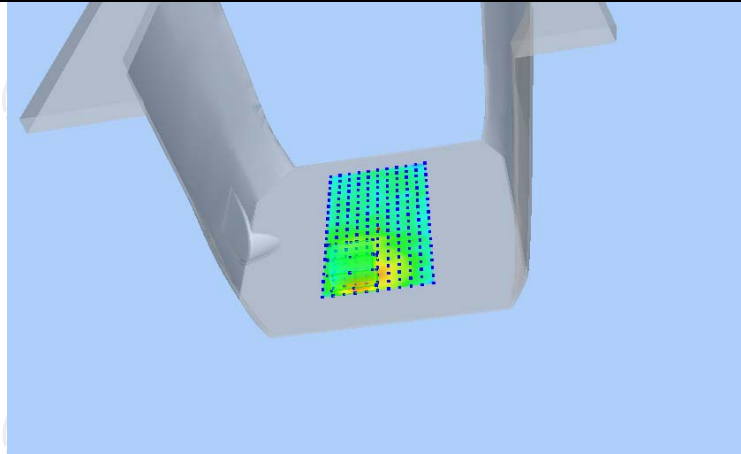
Maximum location: X=-16.00, Y=-56.00 SAR Peak: 0.68 W/kg

SAR 10g (W/Kg)

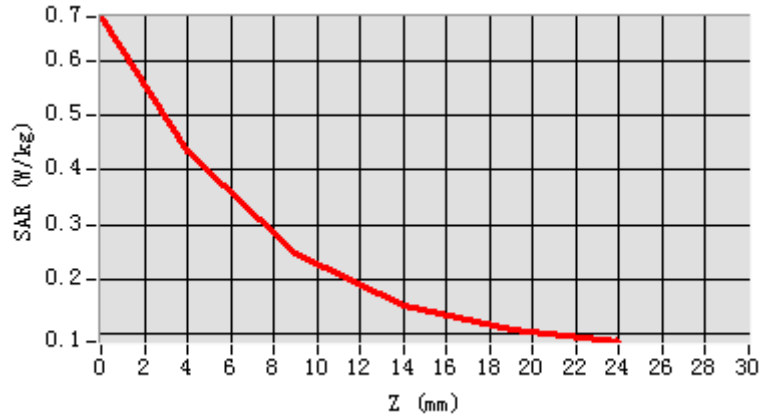
0.239251

SAR 1g (W/Kg)

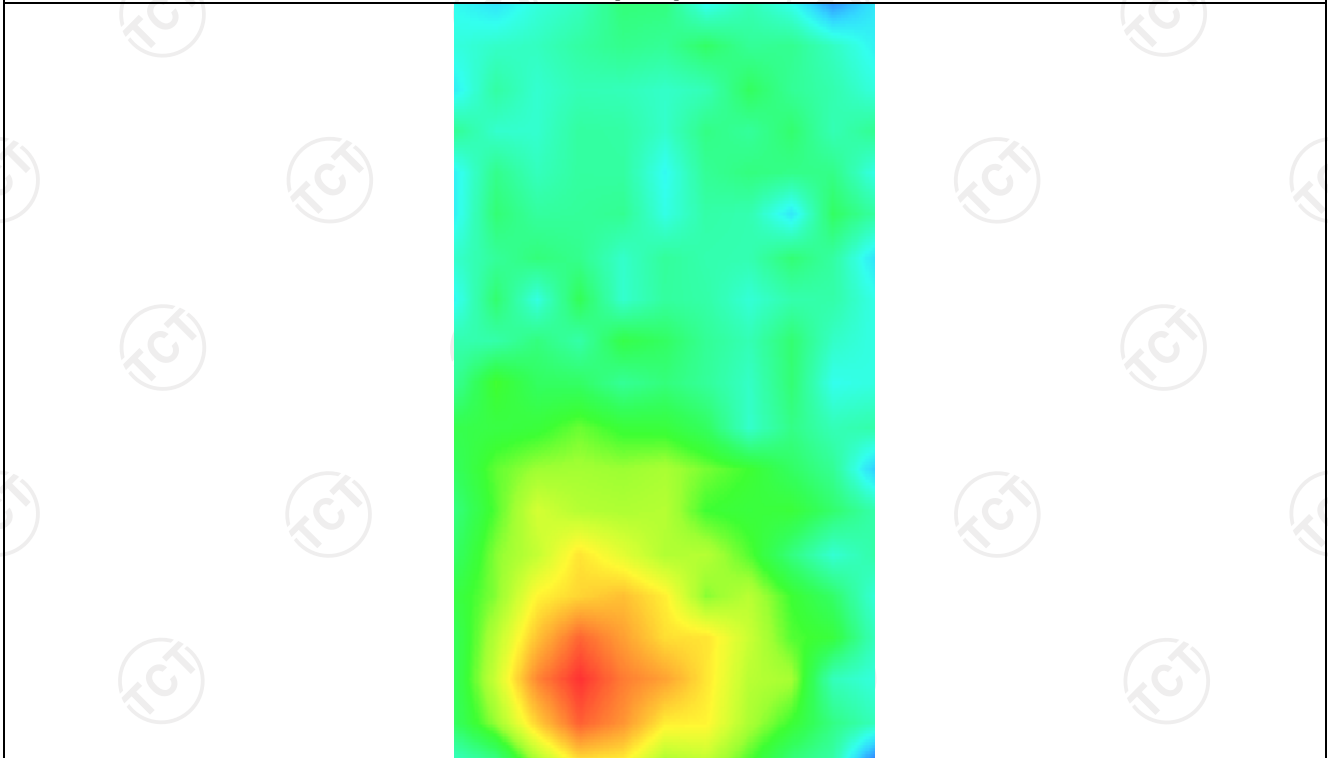
0.411845



Z (mm)	0.00	4.00	9.00	14.00	19.00
SAR (W/Kg)	0.6825	0.4340	0.2469	0.1515	0.1076



Hot spot position



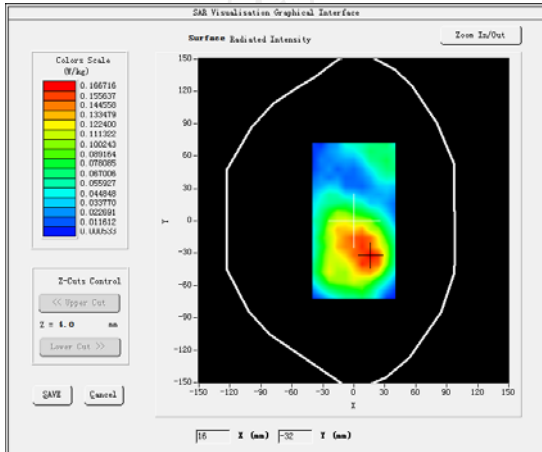
MEASUREMENT 3

Lower Band SAR (Channel 20050):

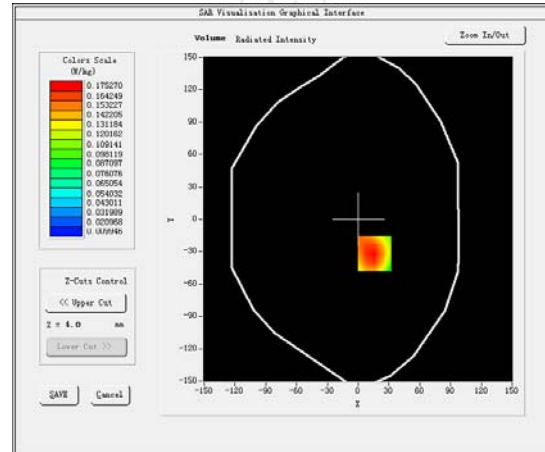
Date: 06/07/2016

Frequency (MHz)	1720.000000
Relative permittivity (real part)	53.321249
Relative permittivity (imaginary part)	12.468850
Conductivity (S/m)	1.502592
Variation (%)	2.620000
Crest Factor	1.0
Probe Conversion factor	4.52
E-Field Probe:	SSE5 (SN 07/15 EP248)
Area Scan	<u>dx=8mm dy=8mm, h= 5.00 mm</u>
ZoomScan	<u>5x5x7, dx=8mm dy=8mm</u> <u>dz=5mm, Complete/ndx=8mm dy=8mm, h=</u> <u>5.00 mm</u>
Phantom	<u>Validation plane</u>
Device Position	<u>Body back (hotspot 10mm)</u>
Band	<u>LTE band 4(50RB)</u>

SURFACE SAR



VOLUME SAR



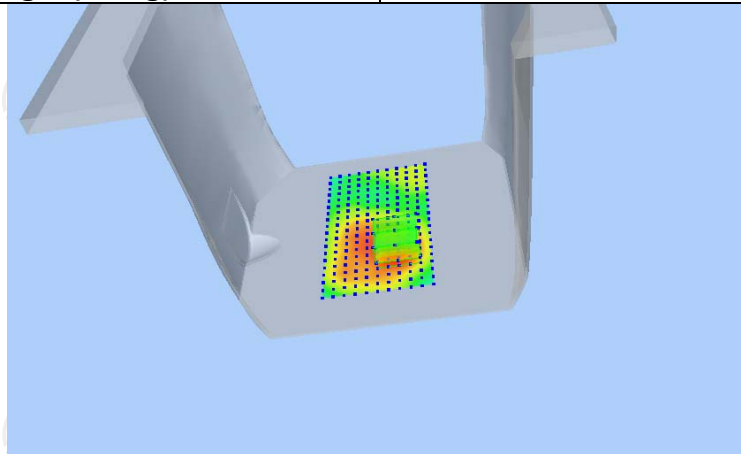
Maximum location: X=16.00, Y=-32.00 SAR Peak: 0.31 W/kg

SAR 10g (W/Kg)

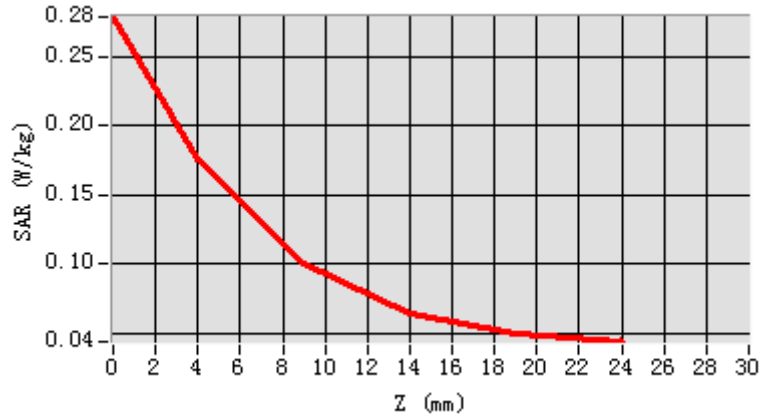
0.095847

SAR 1g (W/Kg)

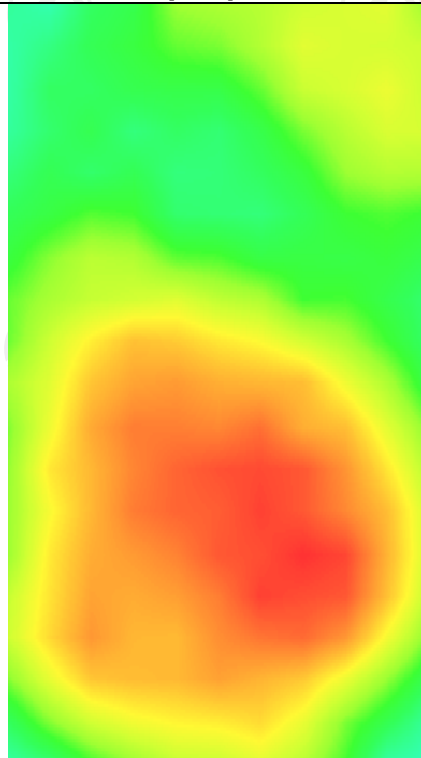
0.170227



Z (mm)	0.00	4.00	9.00	14.00	19.00
SAR (W/Kg)	0.2785	0.1753	0.0997	0.0636	0.0494



Hot spot position



WLAN 2.4

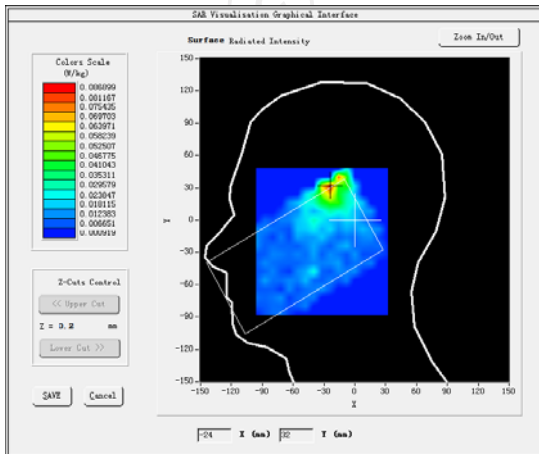
MEASUREMENT 1

Middle Band SAR (Channel 6):

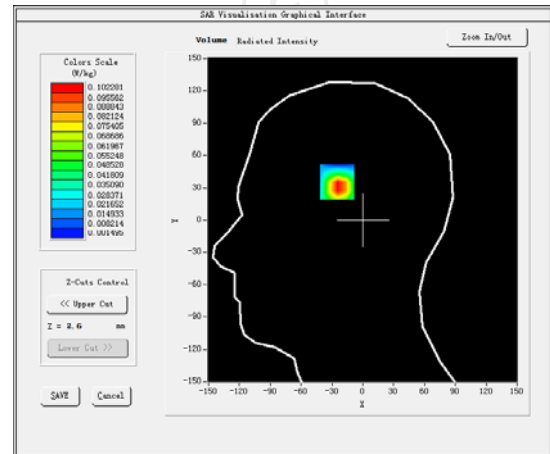
Date: 08/06/2017

Frequency (MHz)	2437.000000
Relative permittivity (real part)	37.851613
Relative permittivity (imaginary part)	13.546980
Conductivity (S/m)	1.814111
Variation (%)	4.520000
Crest Factor	1.0
Probe Conversion factor	4.58
E-Field Probe:	SSE5 (SN 07/15 EP248)
Area Scan	<u>dx=8mm dy=8mm, h= 5.00 mm</u>
ZoomScan	<u>5x5x7, dx=8mm dy=8mm</u> <u>dz=5mm, Complete/ndx=8mm dy=8mm, h=</u> <u>5.00 mm</u>
Phantom	<u>Right head</u>
Device Position	<u>Cheek</u>
Band	<u>IEEE 802.11b ISM</u>

SURFACE SAR



VOLUME SAR



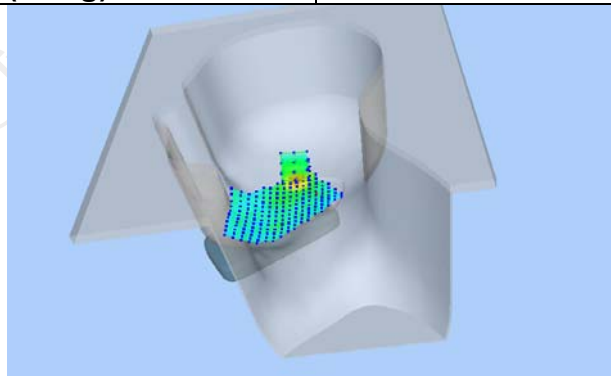
Maximum location: X=-25.00, Y=40.00 SAR Peak: 0.18 W/kg

SAR 10g (W/Kg)

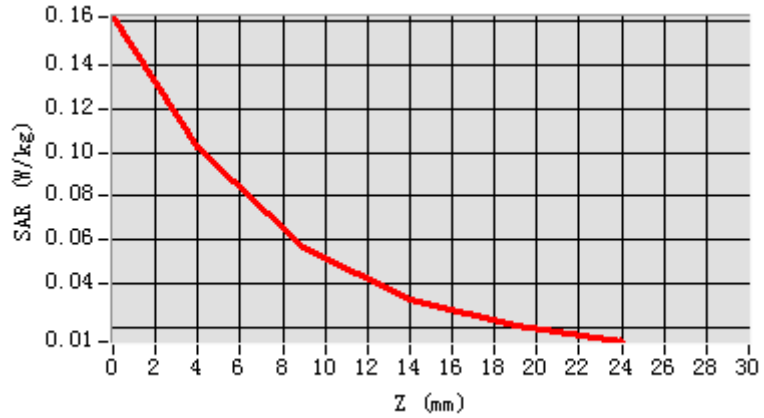
0.051603

SAR 1g (W/Kg)

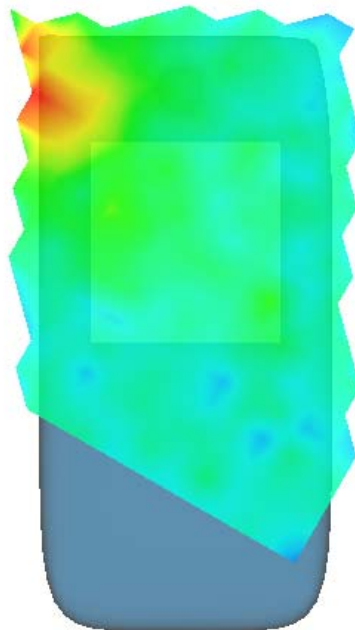
0.104020



Z (mm)	0.00	4.00	9.00	14.00	19.00
SAR (W/Kg)	0.1619	0.1023	0.0567	0.0325	0.0205



Hot spot position



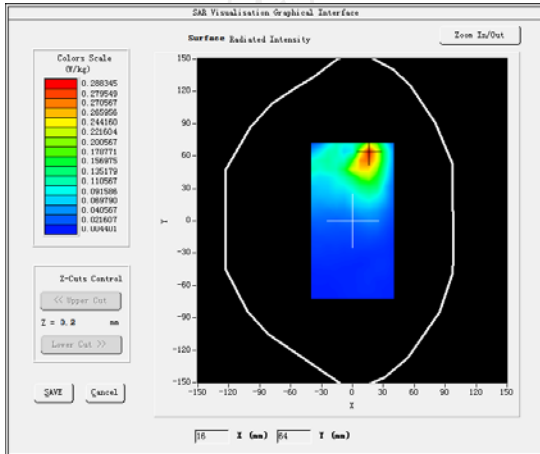
MEASUREMENT 2

Middle Band SAR (Channel 6):

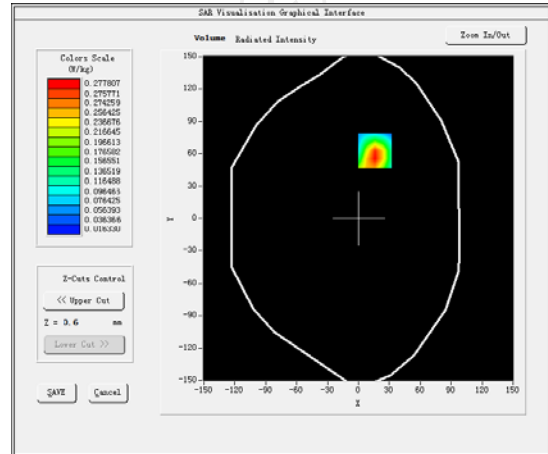
Date: 01/09/2016

Frequency (MHz)	243700000
Relative permittivity (real part)	54.630667
Relative permittivity (imaginary part)	14.318444
Conductivity (S/m)	1.982536
Variation (%)	-0.560000
Crest Factor	1.0
Probe Conversion factor	4.70
E-Field Probe:	SSE5 (SN 07/15 EP248)
Area Scan	<u>dx=8mm dy=8mm, h= 5.00 mm</u>
ZoomScan	<u>5x5x7, dx=8mm dy=8mm</u> <u>dz=5mm, Complete/ndx=8mm dy=8mm, h=</u> <u>5.00 mm</u>
Phantom	Validation plane
Device Position	Body back(5mm)
Band	<u>IEEE 802.11b ISM</u>

SURFACE SAR



VOLUME SAR



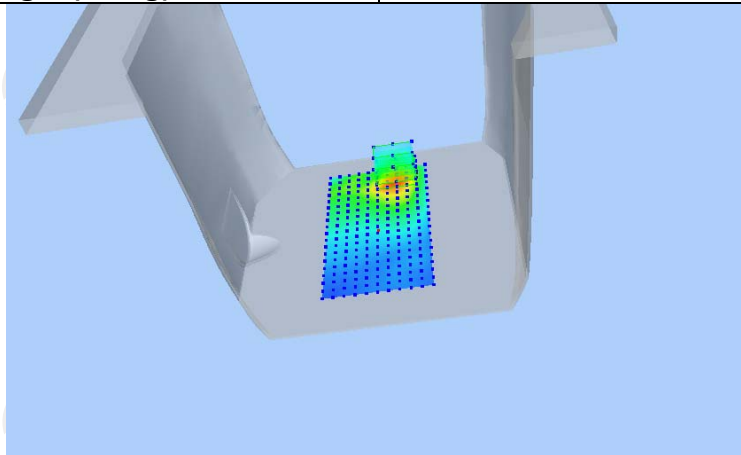
Maximum location: X=16.00, Y=63.00 SAR Peak: 0.29 W/kg

SAR 10g (W/Kg)

0.114444

SAR 1g (W/Kg)

0.140409



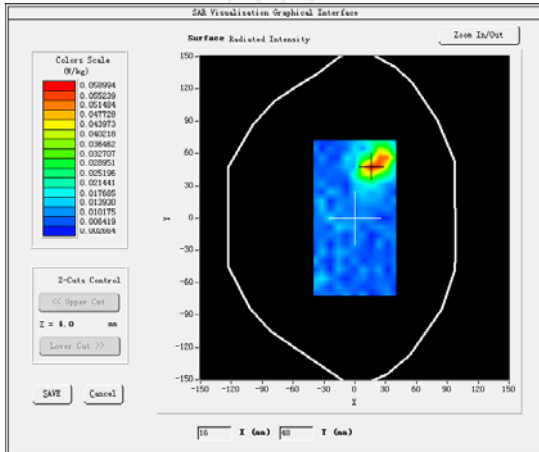
MEASUREMENT 3

Middle Band SAR (Channel 6):

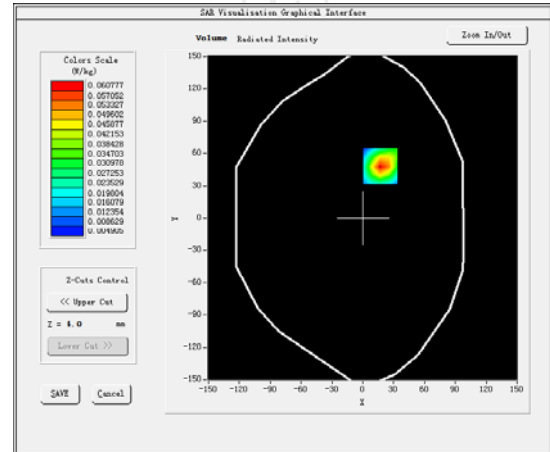
Date: 01/09/2016

Frequency (MHz)	2437.000000
Relative permittivity (real part)	54.630667
Relative permittivity (imaginary part)	14.318444
Conductivity (S/m)	1.982536
Variation (%)	-0.950000
Crest Factor	1.0
Probe Conversion factor	4.70
E-Field Probe:	SSE5 (SN 07/15 EP248)
Area Scan	<u>dx=8mm dy=8mm, h= 5.00 mm</u>
ZoomScan	<u>5x5x7, dx=8mm dy=8mm</u> <u>dz=5mm, Complete/ndx=8mm dy=8mm, h=</u> <u>5.00 mm</u>
Phantom	Validation plane
Device Position	Body back(10mm)
Band	<u>IEEE 802.11b ISM</u>

SURFACE SAR



VOLUME SAR



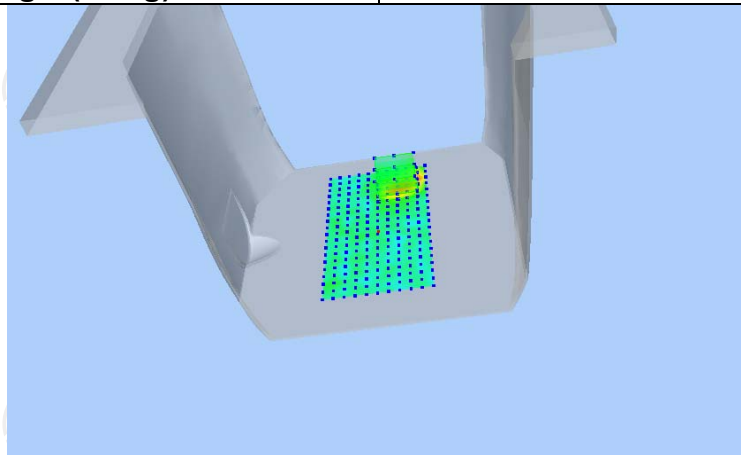
Maximum location: X=17.00, Y=48.00 SAR Peak: 0.10 W/kg

SAR 10g (W/Kg)

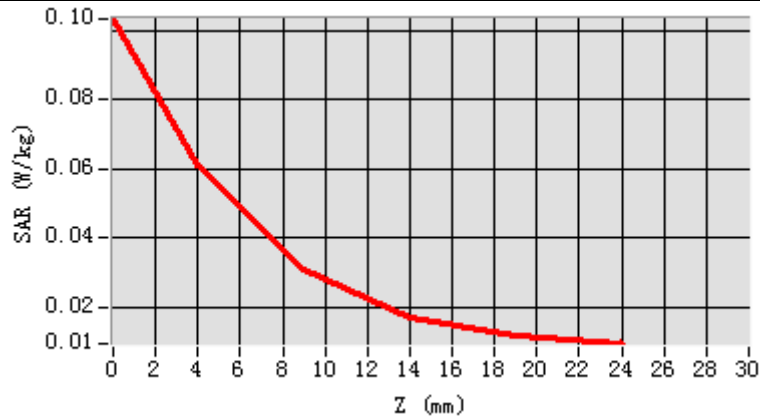
0.040642

SAR 1g (W/Kg)

0.078531



Z (mm)	0.00	4.00	9.00	14.00	19.00
SAR (W/Kg)	0.1034	0.0608	0.0308	0.0170	0.0116



Hot spot position

