

Appendix A: EUT Photos



Liquid depth



The Body Liquid of 835MHz (15.4cm)



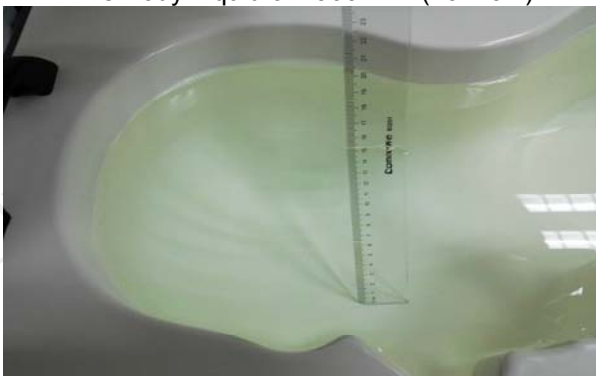
The Body Liquid of 1800MHz (15.2 cm)



The Body Liquid of 1900MHz (16.4 cm)



The Body Liquid of 2450MHz (15.3cm)



The Head Liquid of 835MHz (15.3cm)



The Head Liquid of 1800MHz (15.2cm)

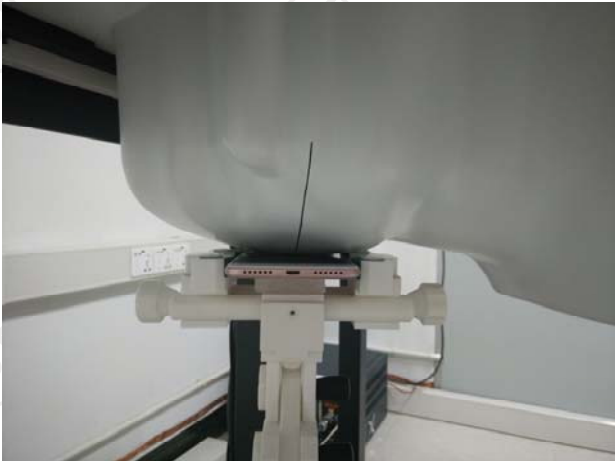


The Head Liquid of 1900MHz (15.5cm)

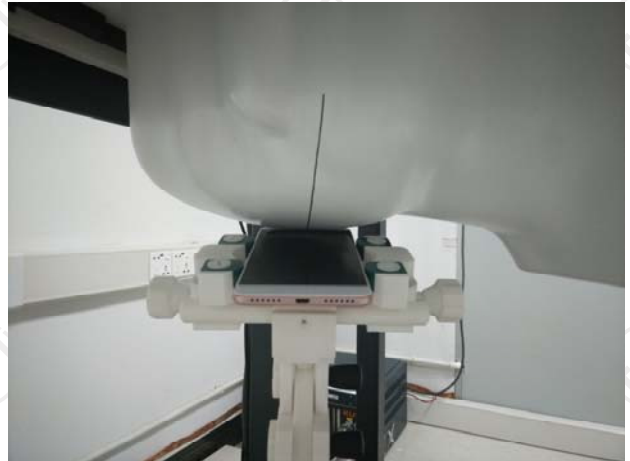


The Head Liquid of 2450MHz (15.6cm)

Appendix B: Test Setup Photos



Right Cheek



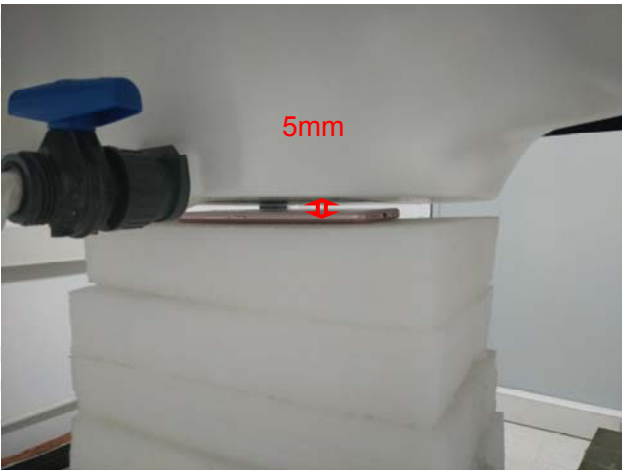
Right Tilted



Left Cheek



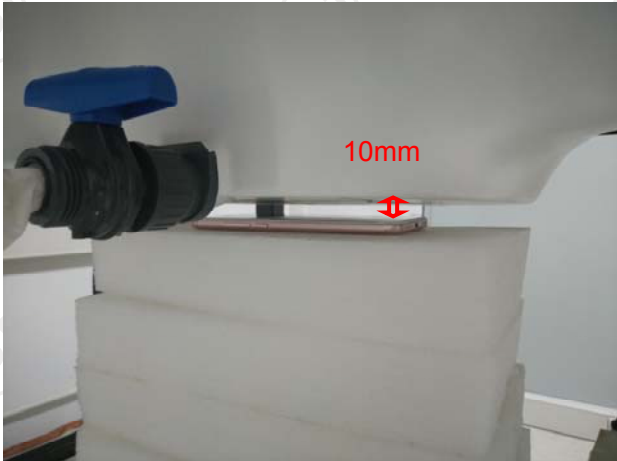
Left Tilted



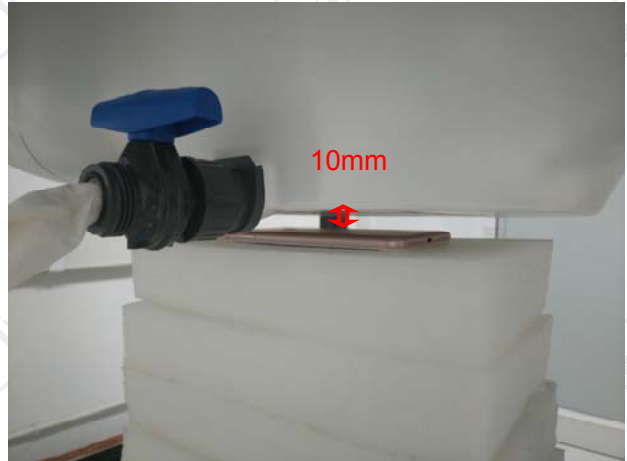
Body worn – Front (5mm)



Body worn – Back (5mm)



Hotspot Front (10mm)



Hotspot Back (10mm)



Hotspot Top (10mm)



Hotspot Bottom (10mm)



Hotspot Right (10mm)



Hotspot Left (10mm)