

## 12. SAR Test Data

GSM850

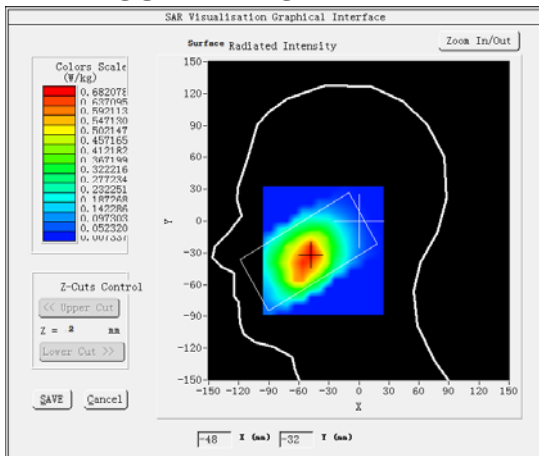
### MEASUREMENT 1

Middle Band SAR (Channel 190):

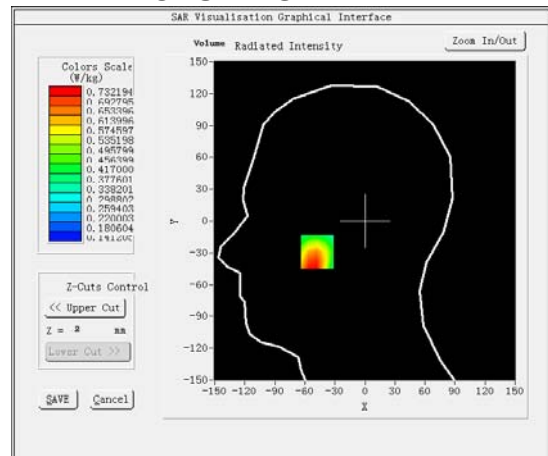
Date: 07/08/2017

Frequency (MHz)	836.600000
Relative permittivity (real part)	41.417760
Relative permittivity (imaginary part)	18.129852
Conductivity (S/m)	0.874923
Variation (%)	-0.250000
Crest Factor:	8.3
Probe Conversion factor	5.50
E-Field Probe:	SSE5 (SN 07/15 EP248)
Area Scan	<u>dx=8mm dy=8mm, h= 5.00 mm</u>
ZoomScan	<u>5x5x7, dx=8mm dy=8mm</u> <u>dz=5mm, Complete/ndx=8mm dy=8mm, h=</u> <u>5.00 mm</u>
Phantom	<u>Left head</u>
Device Position	<u>Cheek</u>
Band	<u>GSM850(voice)</u>

#### SURFACE SAR



#### VOLUME SAR



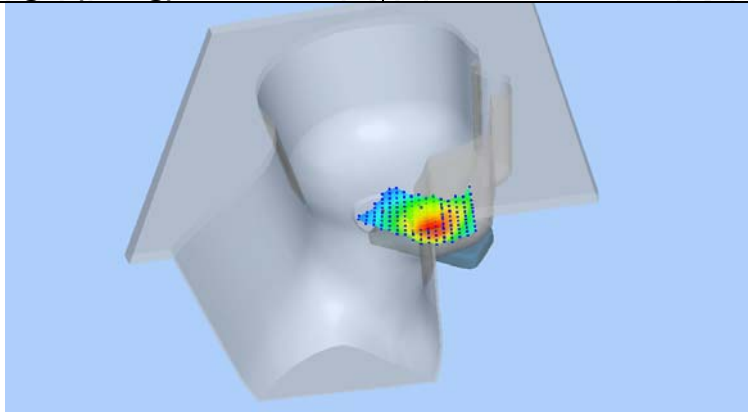
Maximum location: X=-48.00, Y=-29.00 SAR Peak: 0.89 W/kg

SAR 10g (W/Kg)

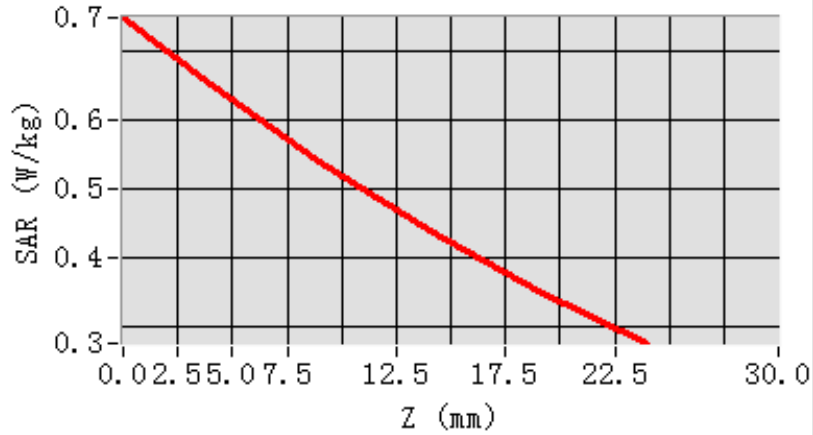
0.523943

SAR 1g (W/Kg)

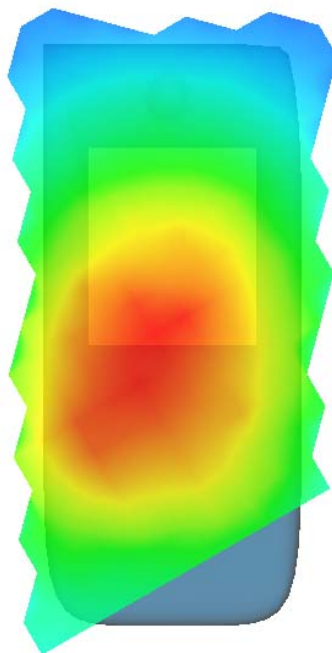
0.715164



Z (mm)	0.00	4.00	9.00	14.00	19.00
SAR (W/Kg)	0.7469	0.6486	0.5374	0.4387	0.3516



**Hot spot position**



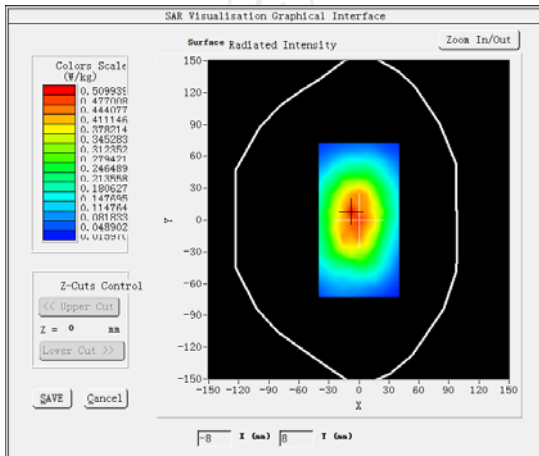
**MEASUREMENT 2**

Middle Band SAR (Channel 190):

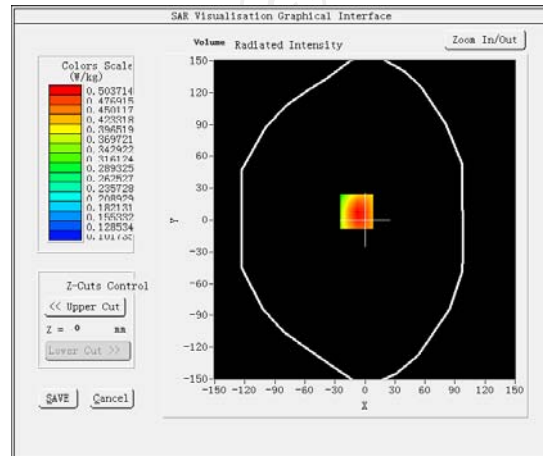
Date: 07/08/2017

Frequency (MHz)	836.600000
Relative permittivity (real part)	55.242077
Relative permittivity (imaginary part)	21.378187
Conductivity (S/m)	0.940253
Variation (%)	2.480000
Crest Factor:	8.3
Probe Conversion factor	5.65
E-Field Probe:	SSE5 (SN 07/15 EP248)
Area Scan	<u>dx=8mm dy=8mm, h= 5.00 mm</u>
ZoomScan	<u>5x5x7, dx=8mm dy=8mm</u> <u>dz=5mm, Complete/ndx=8mm dy=8mm, h=</u> <u>5.00 mm</u>
Phantom	<u>Validation plane</u>
Device Position	<u>Body back(15mm)</u>
Band	<u>GSM850(Voice)</u>

**SURFACE SAR**



**VOLUME SAR**



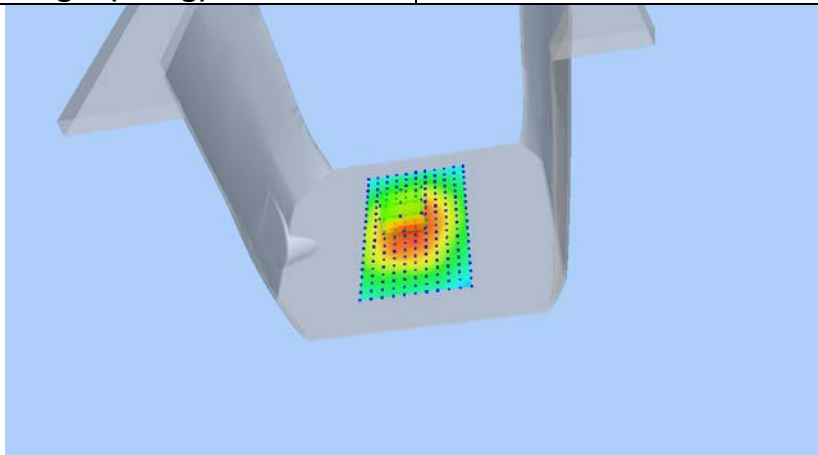
Maximum location: X=-8.00, Y=8.00 SAR Peak: 0.67 W/kg

SAR 10g (W/Kg)

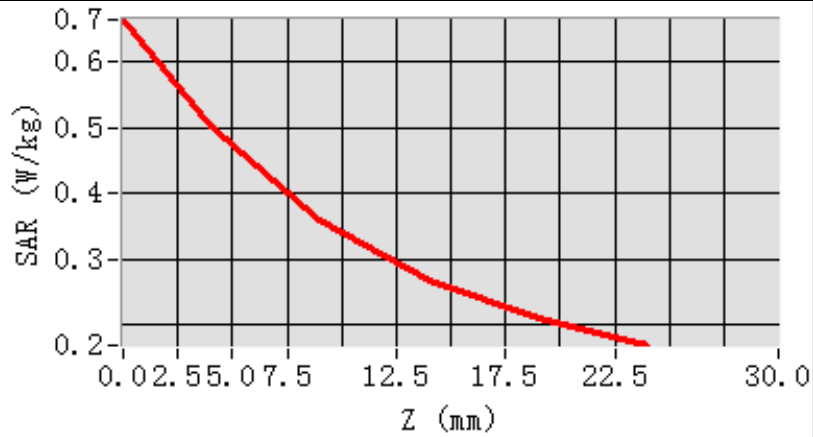
0.359978

SAR 1g (W/Kg)

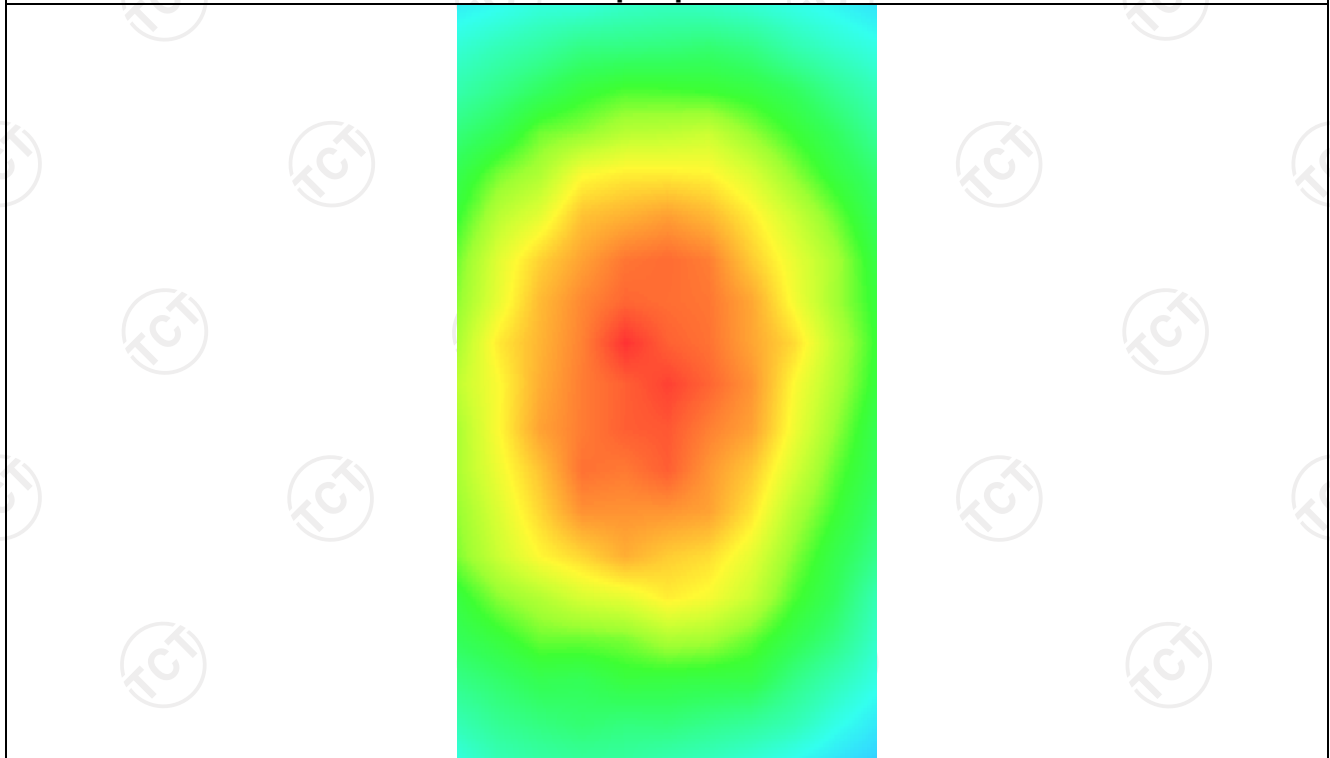
0.499459



Z (mm)	0.00	4.00	9.00	14.00	19.00
SAR (W/Kg)	0.6649	0.5037	0.3609	0.2687	0.2104



Hot spot position



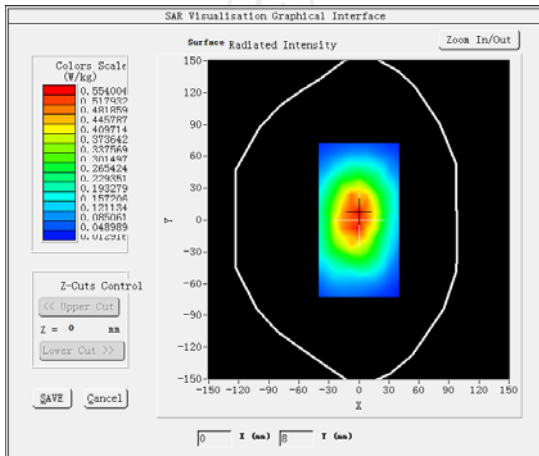
**MEASUREMENT 3**

Middle Band SAR (Channel 190):

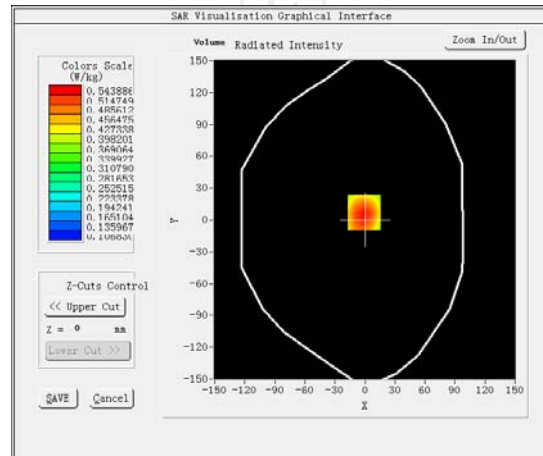
Date: 07/08/2017

Frequency (MHz)	836.600000
Relative permittivity (real part)	55.242077
Relative permittivity (imaginary part)	21.378187
Conductivity (S/m)	0.940253
Variation (%)	-2.120000
Crest Factor:	2.0
Probe Conversion factor	5.65
E-Field Probe:	SSE5 (SN 07/15 EP248)
Area Scan	<u>dx=8mm dy=8mm, h= 5.00 mm</u>
ZoomScan	<u>5x5x7, dx=8mm dy=8mm</u> <u>dz=5mm, Complete/ndx=8mm dy=8mm, h=</u> <u>5.00 mm</u>
Phantom	<u>Validation plane</u>
Device Position	<u>Body back(15mm)</u>
Band	<u>GSM850(GPRS 4slot)</u>

**SURFACE SAR**



**VOLUME SAR**



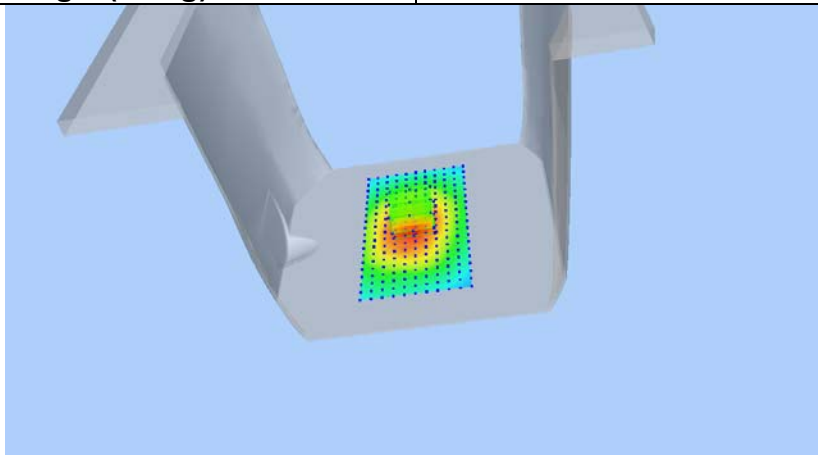
Maximum location: X=-1.00, Y=7.00 SAR Peak: 0.72 W/kg

SAR 10g (W/Kg)

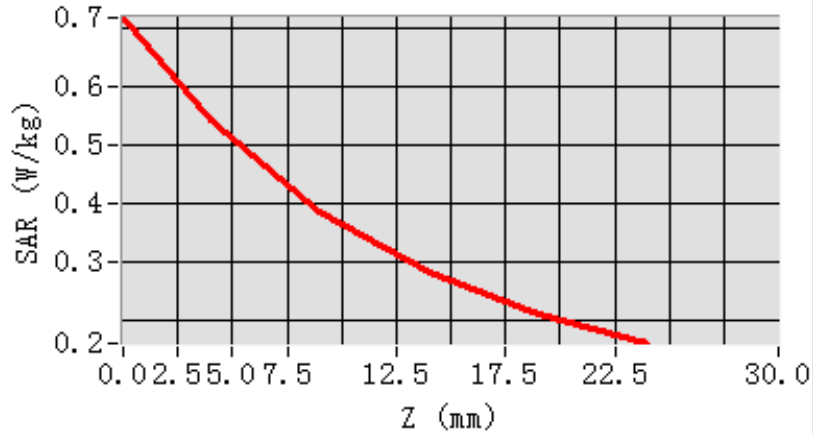
0.369773

SAR 1g (W/Kg)

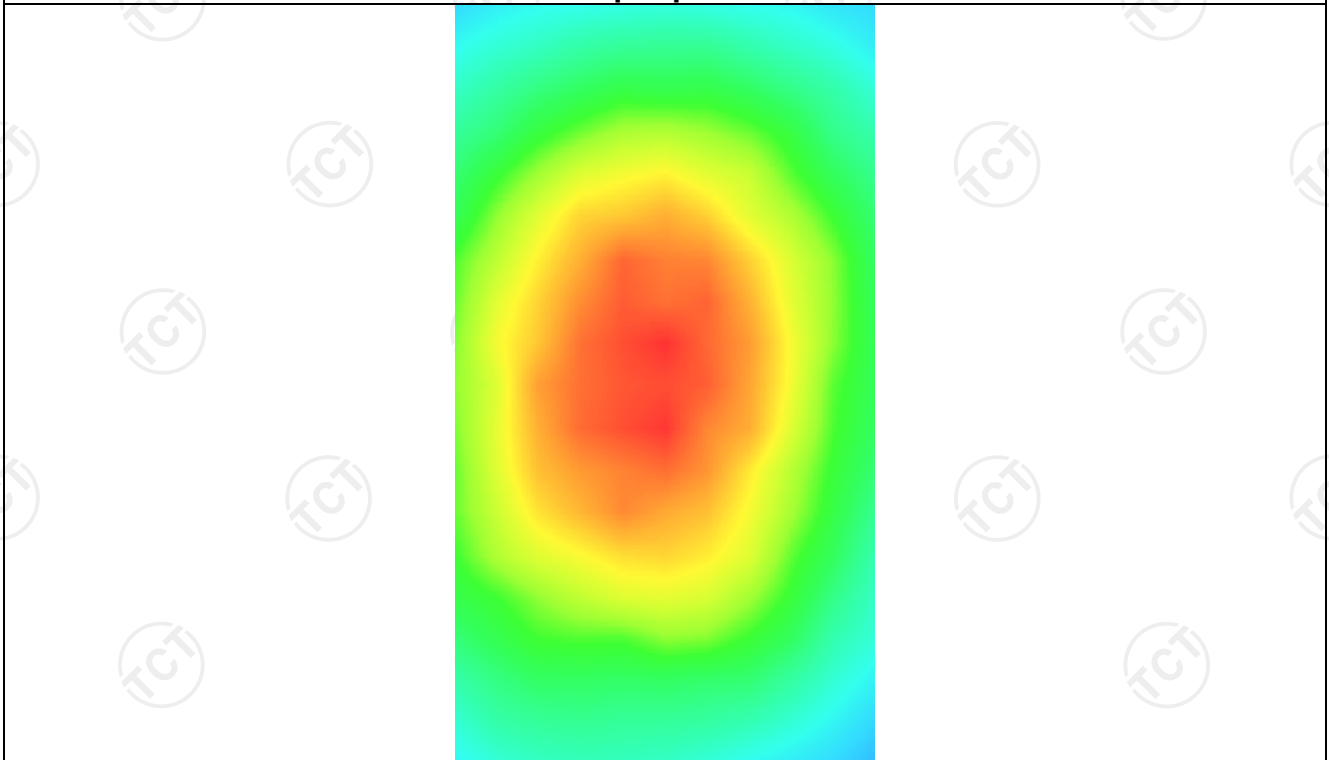
0.534158



Z (mm)	0.00	4.00	9.00	14.00	19.00
SAR (W/Kg)	0.7184	0.5439	0.3861	0.2806	0.2107



Hot spot position



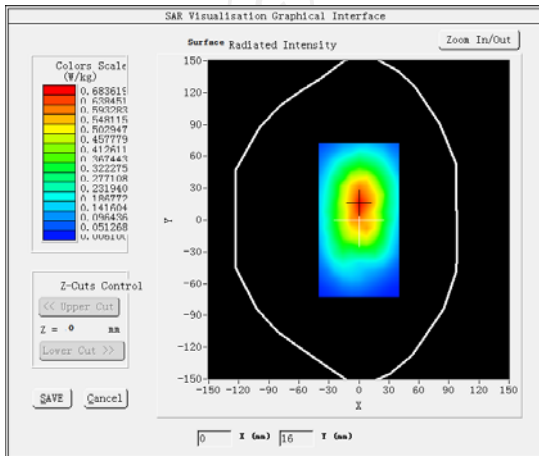
**MEASUREMENT 4**

Lower Band SAR (Channel 128):

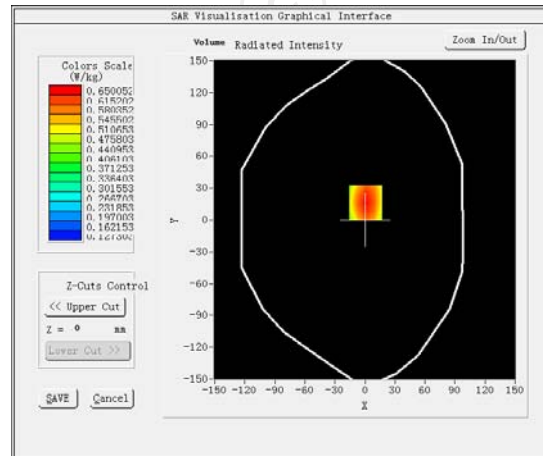
Date: 07/08/2017

<b>Frequency (MHz)</b>	824.200012
<b>Relative permittivity (real part)</b>	55.242077
<b>Relative permittivity (imaginary part)</b>	21.378187
<b>Conductivity (S/m)</b>	0.940253
<b>Variation (%)</b>	-2.280000
<b>Crest Factor:</b>	2.0
<b>Probe Conversion factor</b>	5.65
<b>E-Field Probe:</b>	SSE5 (SN 07/15 EP248)
<b>Area Scan</b>	<u>dx=8mm dy=8mm, h= 5.00 mm</u>
<b>ZoomScan</b>	<u>5x5x7, dx=8mm dy=8mm</u> <u>dz=5mm, Complete/ndx=8mm dy=8mm, h=</u> <u>5.00 mm</u>
<b>Phantom</b>	<u>Validation plane</u>
<b>Device Position</b>	<u>Body back(10mm)</u>
<b>Band</b>	<u>GSM850(GPRS 4slot hotspot)</u>

**SURFACE SAR**



**VOLUME SAR**



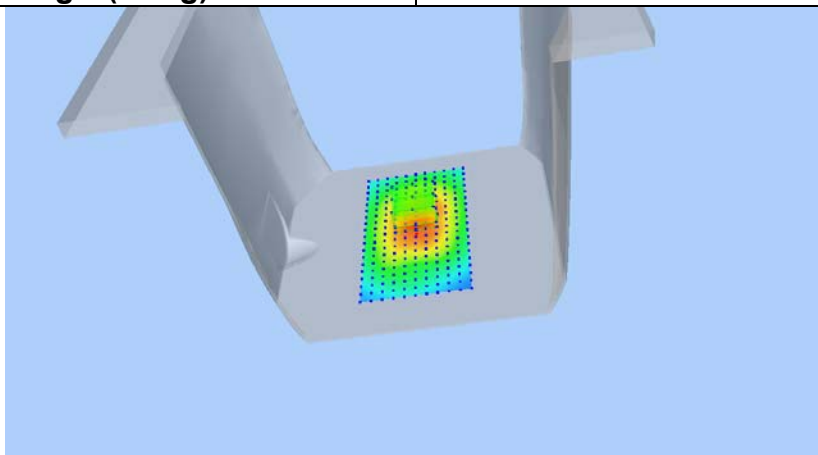
**Maximum location: X=1.00, Y=16.00 SAR Peak: 0.84 W/kg**

**SAR 10g (W/Kg)**

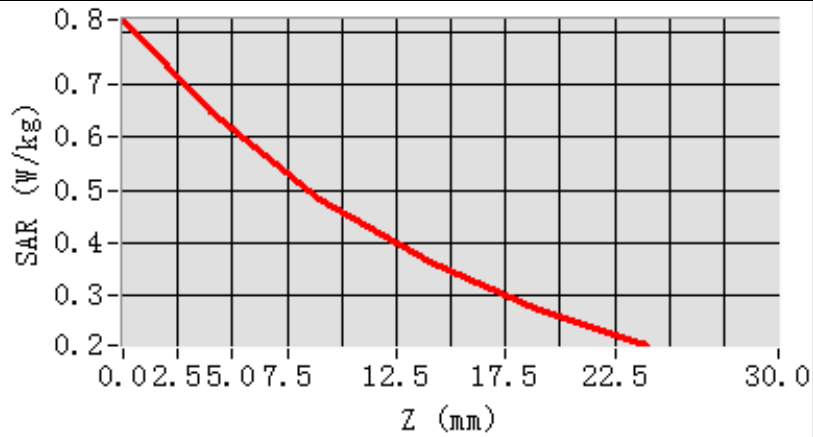
0.445128

**SAR 1g (W/Kg)**

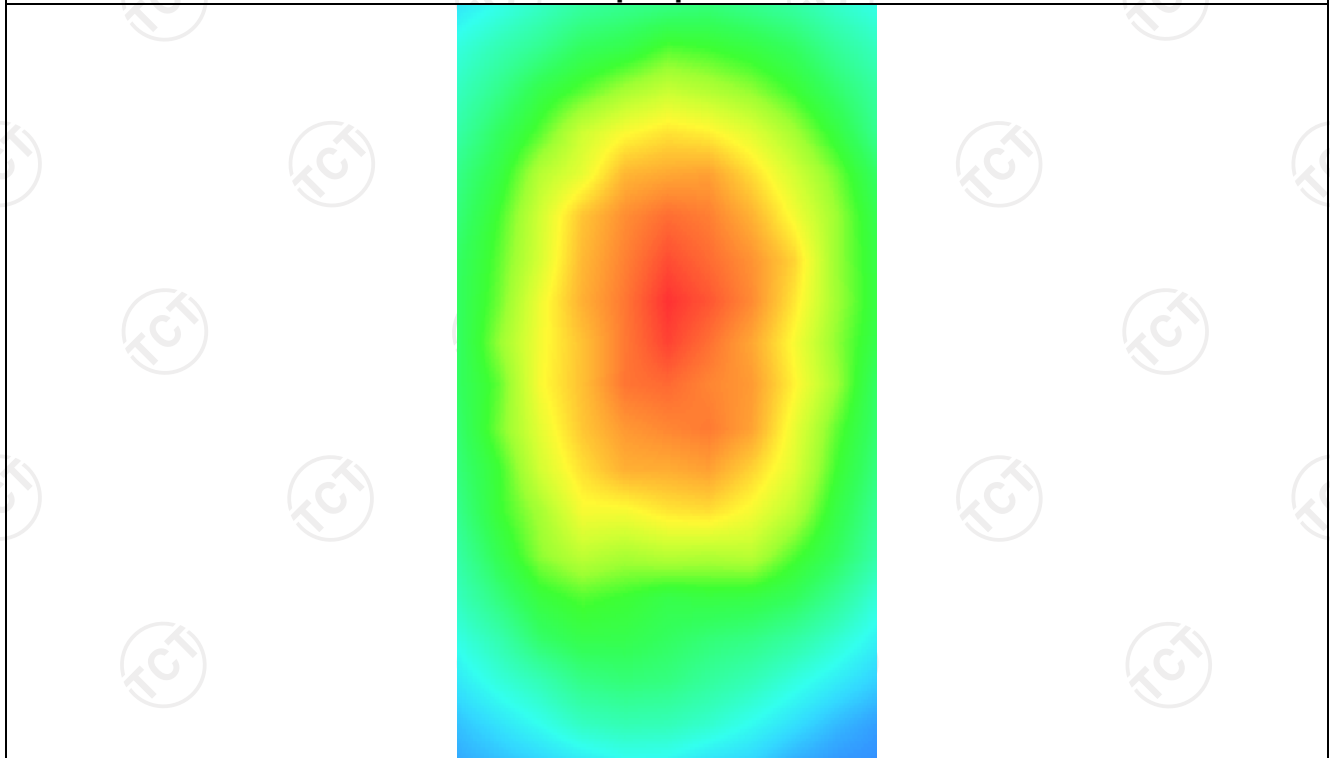
0.636977



Z (mm)	0.00	4.00	9.00	14.00	19.00
SAR (W/Kg)	0.8232	0.6501	0.4838	0.3630	0.2750



Hot spot position





GSM1900

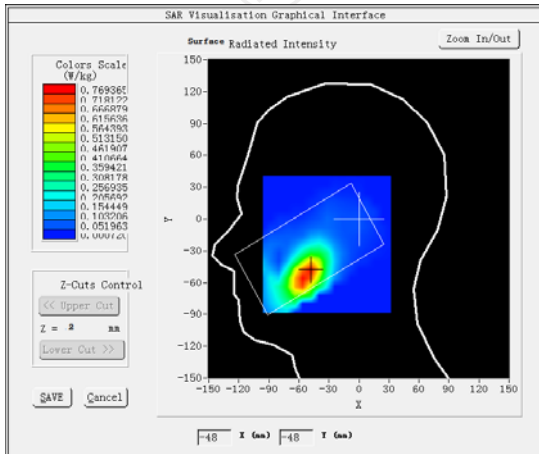
**MEASUREMENT 1**

Middle Band SAR (Channel 661):

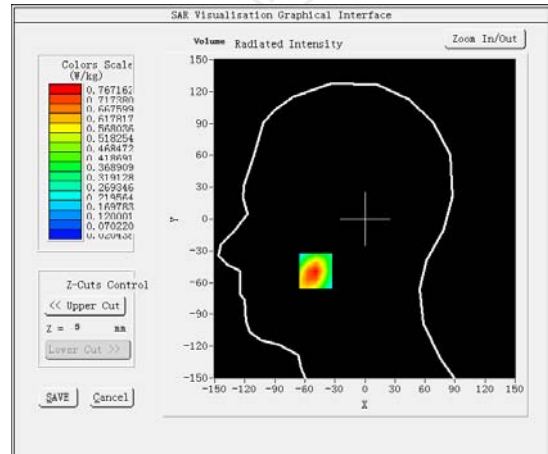
Date: 07/09/2017

<b>Frequency (MHz)</b>	1880.000000
<b>Relative permittivity (real part)</b>	39.102121
<b>Relative permittivity (imaginary part)</b>	12.607061
<b>Conductivity (S/m)</b>	1.350209
<b>Variation (%)</b>	-2.410000
<b>Crest Factor</b>	8.3
<b>Probe Conversion factor</b>	4.85
<b>E-Field Probe:</b>	SSE5 (SN 07/15 EP248)
<b>Area Scan</b>	<u>dx=8mm dy=8mm, h= 5.00 mm</u>
<b>ZoomScan</b>	<u>5x5x7, dx=8mm dy=8mm</u> <u>dz=5mm, Complete/ndx=8mm dy=8mm, h=</u> <u>5.00 mm</u>
<b>Phantom</b>	<u>Right head</u>
<b>Device Position</b>	<u>Cheek</u>
<b>Band</b>	<u>GSM1900(voice)</u>

**SURFACE SAR**



**VOLUME SAR**



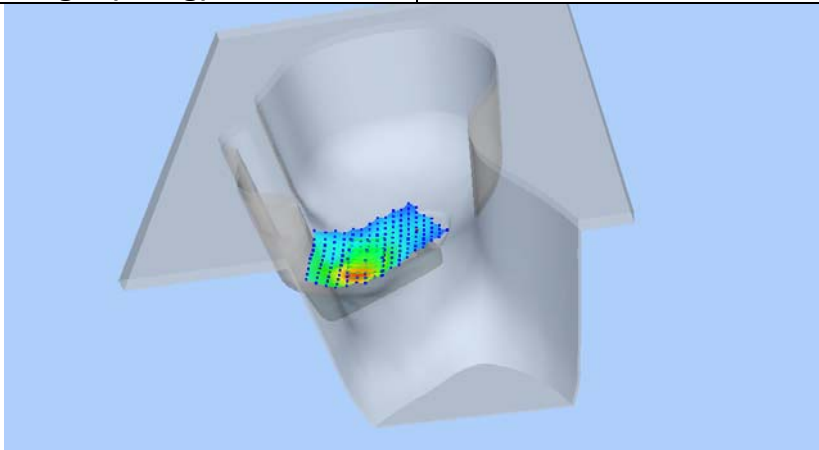
**Maximum location: X=-49.00, Y=-49.00 SAR Peak: 1.11 W/kg**

**SAR 10g (W/Kg)**

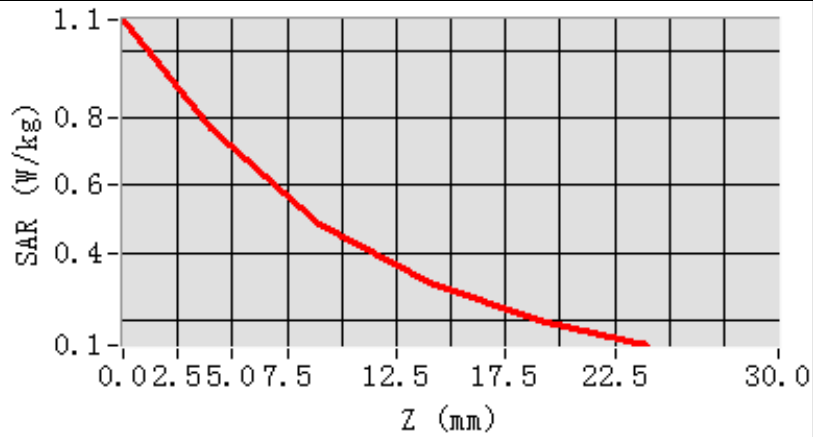
0.419648

**SAR 1g (W/Kg)**

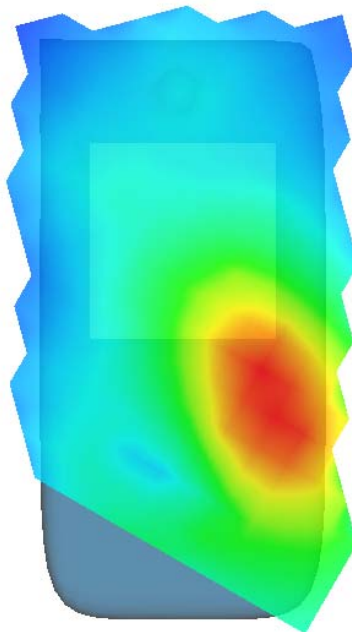
0.726036



Z (mm)	0.00	4.00	9.00	14.00	19.00
SAR (W/Kg)	1.0908	0.7672	0.4880	0.3114	0.2017



**Hot spot position**



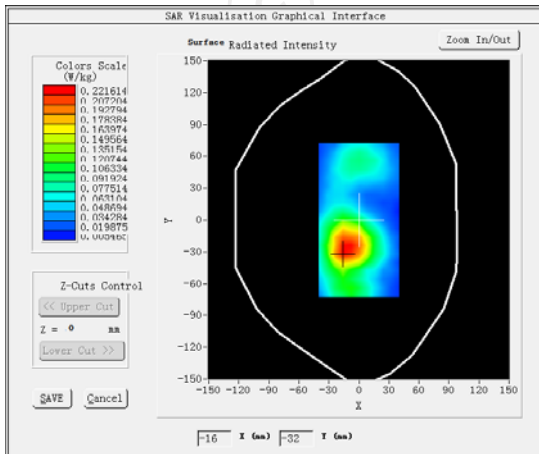
**MEASUREMENT 2**

Middle Band SAR (Channel 661):

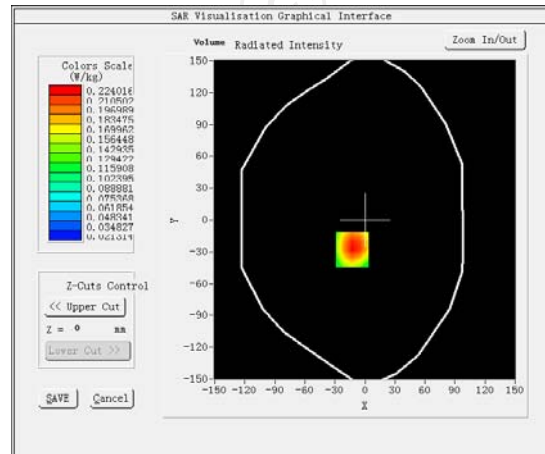
Date: 07/09/2017

Frequency (MHz)	1880.000000
Relative permittivity (real part)	53.320141
Relative permittivity (imaginary part)	14.232400
Conductivity (S/m)	1.503255
Variation (%)	-0.750000
Crest Factor	8.3
Probe Conversion factor	5.01
E-Field Probe:	SSE5 (SN 07/15 EP248)
Area Scan	<u>dx=8mm dy=8mm, h= 5.00 mm</u>
ZoomScan	<u>5x5x7, dx=8mm dy=8mm</u> <u>dz=5mm, Complete/ndx=8mm dy=8mm, h=</u> <u>5.00 mm</u>
Phantom	<u>Validation plane</u>
Device Position	<u>Body back(15mm)</u>
Band	<u>GSM1900(voice)</u>

**SURFACE SAR**



**VOLUME SAR**



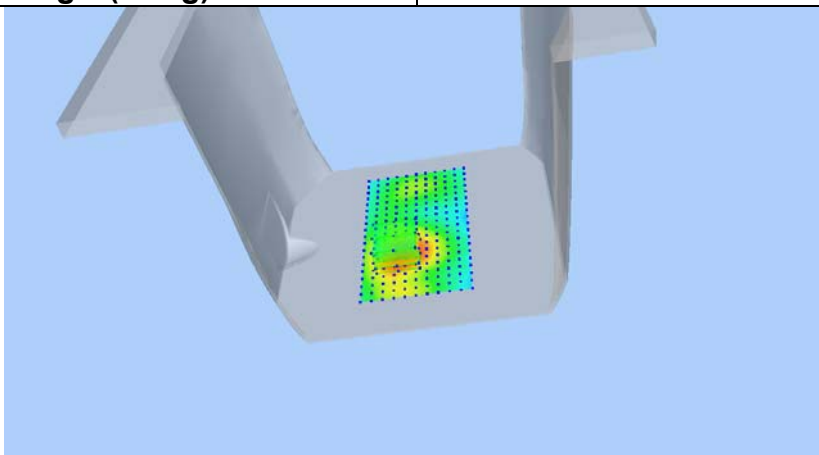
**Maximum location: X=-13.00, Y=-28.00 SAR Peak: 0.29 W/kg**

**SAR 10g (W/Kg)**

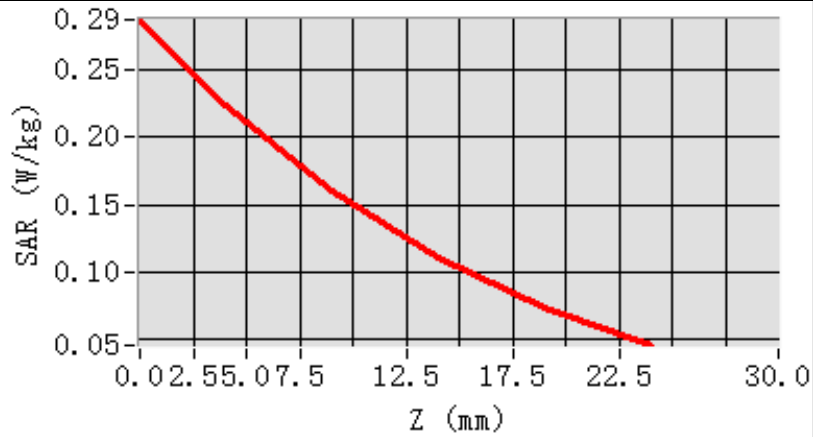
0.139584

**SAR 1g (W/Kg)**

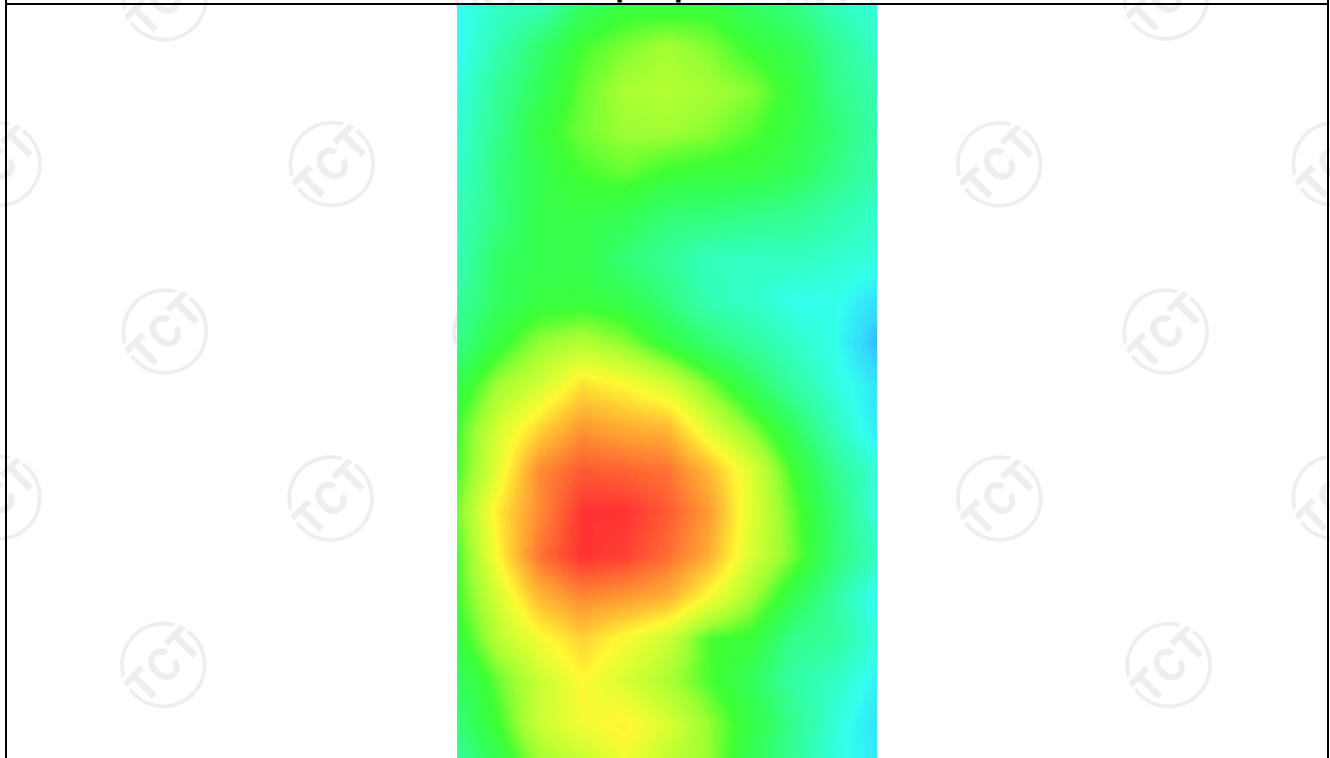
0.214453



Z (mm)	0.00	4.00	9.00	14.00	19.00
SAR (W/Kg)	0.2878	0.2240	0.1601	0.1109	0.0736



**Hot spot position**



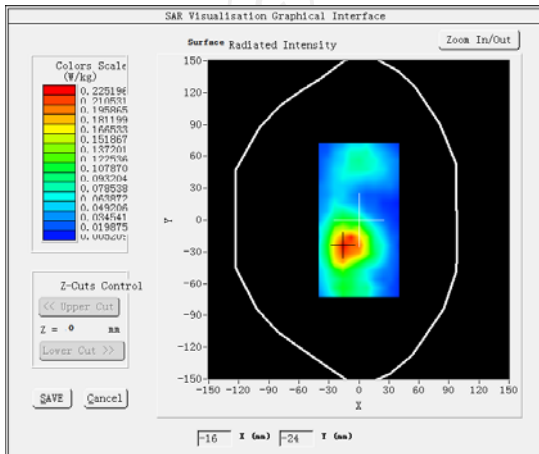
**MEASUREMENT 3**

Middle Band SAR (Channel 661):

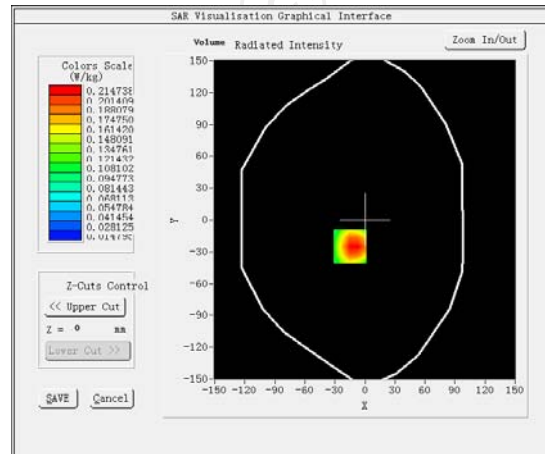
Date: 07/09/2017

Frequency (MHz)	1880.000000
Relative permittivity (real part)	53.320141
Relative permittivity (imaginary part)	14.232400
Conductivity (S/m)	1.503255
Variation (%)	-4.600000
Crest Factor	2.0
Probe Conversion factor	5.01
E-Field Probe:	SSE5 (SN 07/15 EP248)
Area Scan	<u>dx=8mm dy=8mm, h= 5.00 mm</u>
ZoomScan	<u>5x5x7, dx=8mm dy=8mm</u> <u>dz=5mm, Complete/ndx=8mm dy=8mm, h=</u> <u>5.00 mm</u>
Phantom	<u>Validation plane</u>
Device Position	<u>Body back(15mm)</u>
Band	<u>GSM1900(GPRS 4slot )</u>

**SURFACE SAR**



**VOLUME SAR**



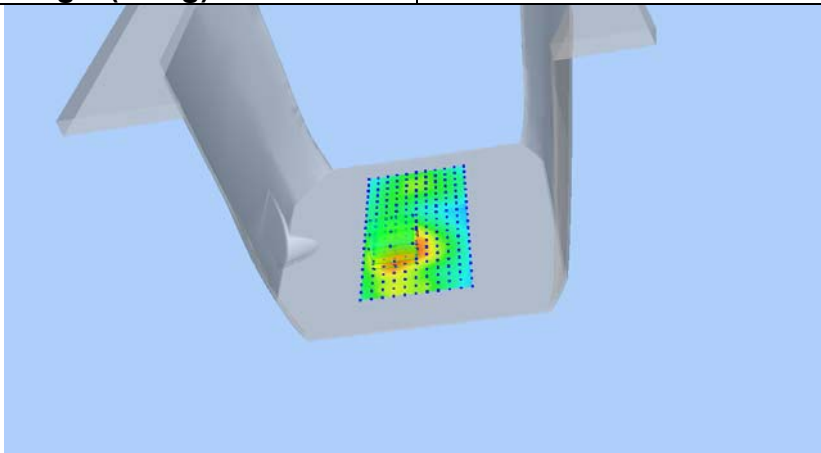
Maximum location: X=-15.00, Y=-25.00 SAR Peak: 0.29 W/kg

SAR 10g (W/Kg)

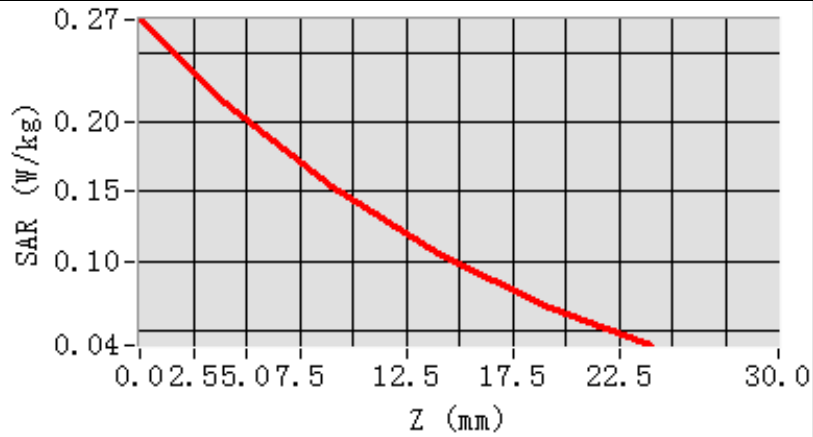
0.131277

SAR 1g (W/Kg)

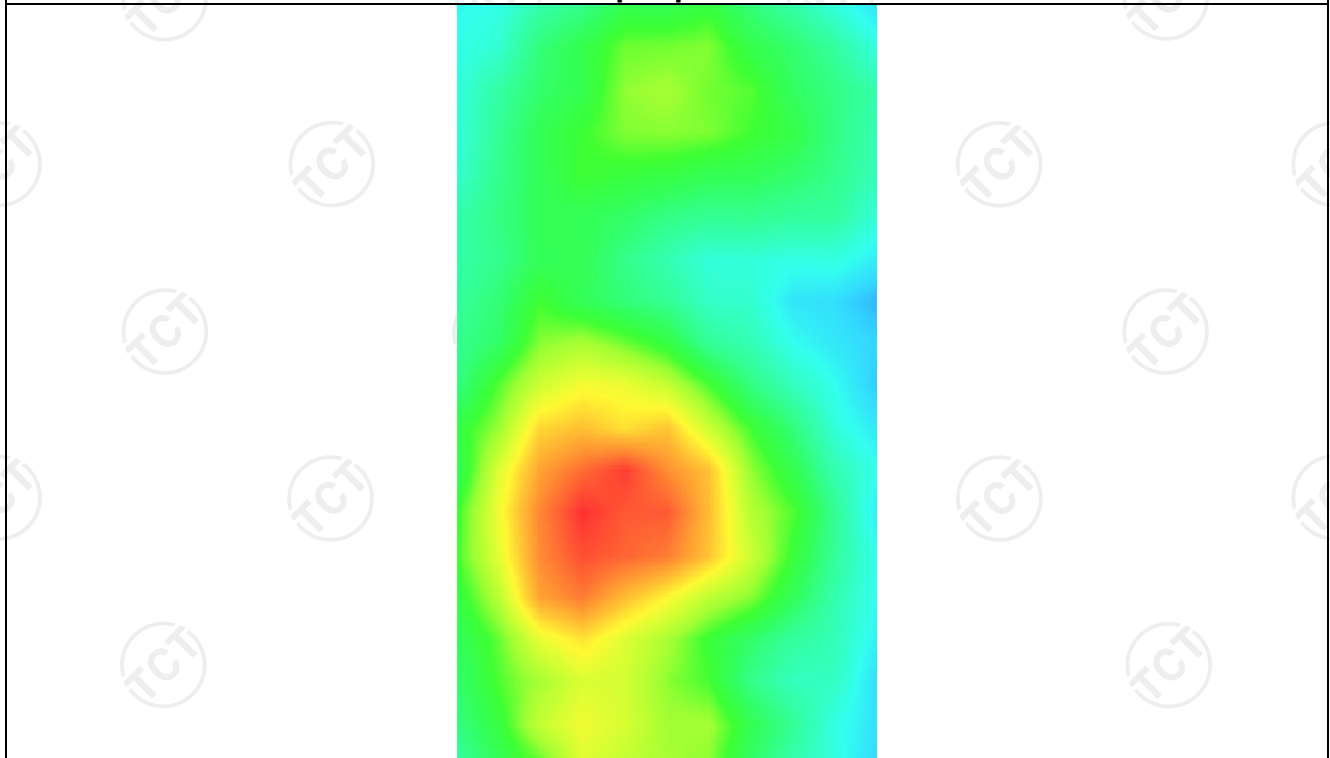
0.207082



Z (mm)	0.00	4.00	9.00	14.00	19.00
SAR (W/Kg)	0.2733	0.2140	0.1532	0.1054	0.0684



Hot spot position



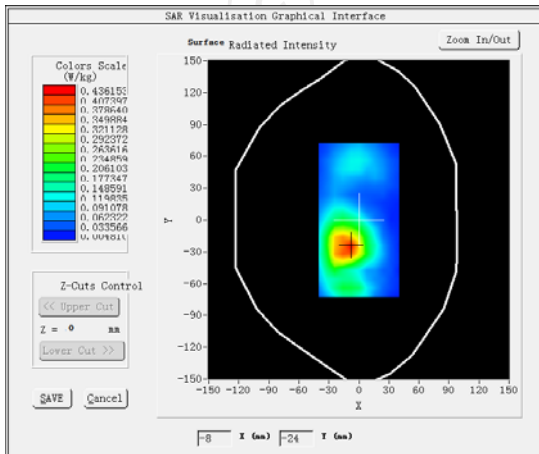
**MEASUREMENT 4**

Middle Band SAR (Channel 661):

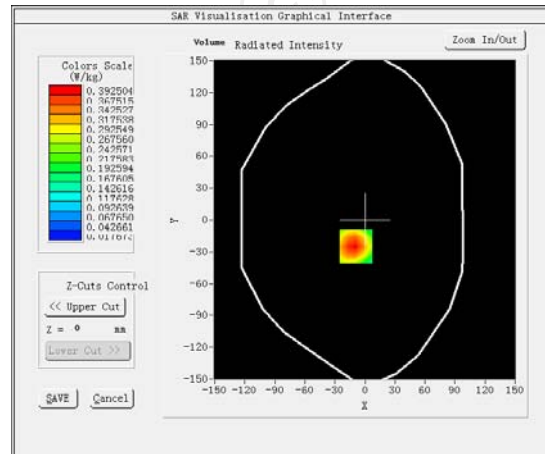
Date: 07/09/2017

<b>Frequency (MHz)</b>	1880.000000
<b>Relative permittivity (real part)</b>	53.320141
<b>Relative permittivity (imaginary part)</b>	14.232400
<b>Conductivity (S/m)</b>	1.503255
<b>Variation (%)</b>	4.350000
<b>Crest Factor</b>	2.0
<b>Probe Conversion factor</b>	5.01
<b>E-Field Probe:</b>	SSE5 (SN 07/15 EP248)
<b>Area Scan</b>	<u>dx=8mm dy=8mm, h= 5.00 mm</u>
<b>ZoomScan</b>	<u>5x5x7, dx=8mm dy=8mm</u> <u>dz=5mm, Complete/ndx=8mm dy=8mm, h=</u> <u>5.00 mm</u>
<b>Phantom</b>	<u>Validation plane</u>
<b>Device Position</b>	<u>Body back(10mm)</u>
<b>Band</b>	<u>GSM1900(GPRS 4slot hot)</u>

**SURFACE SAR**



**VOLUME SAR**



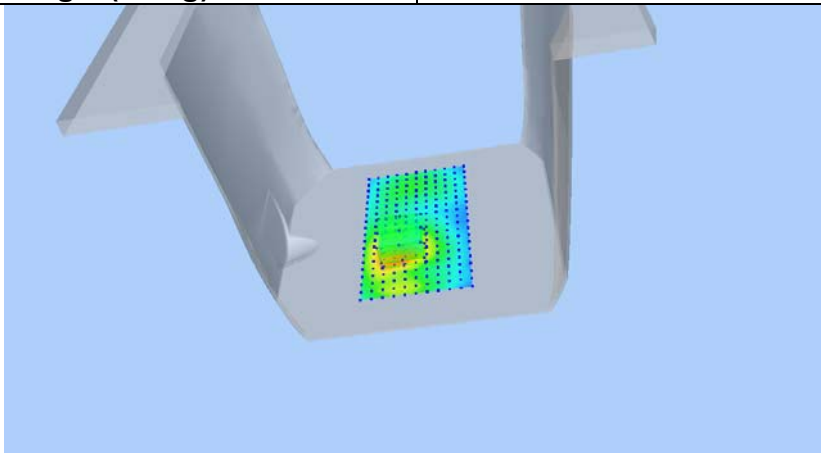
**Maximum location: X=-9.00, Y=-25.00 SAR Peak: 0.62 W/kg**

**SAR 10g (W/Kg)**

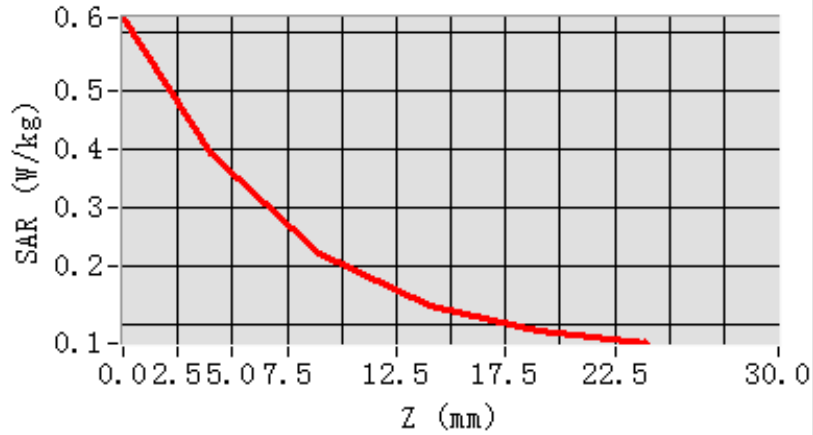
0.222160

**SAR 1g (W/Kg)**

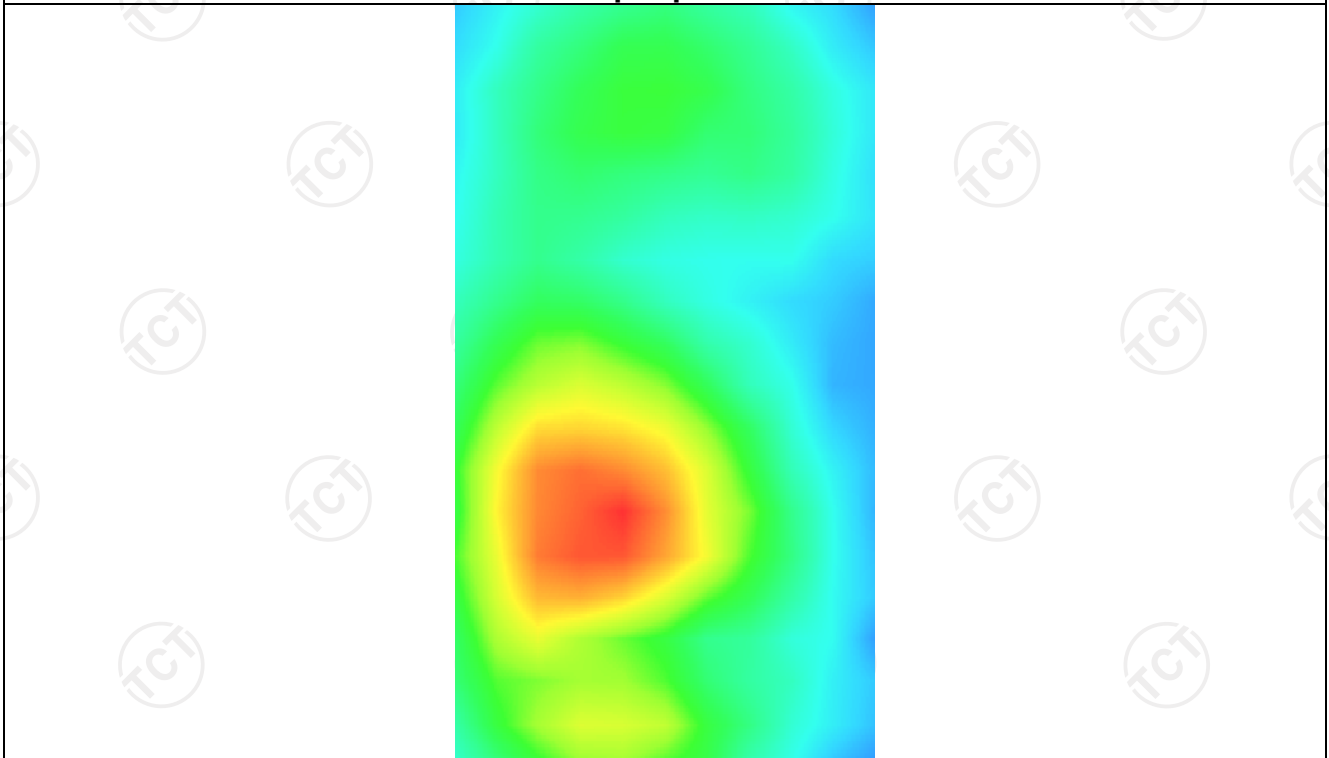
0.375660



Z (mm)	0.00	4.00	9.00	14.00	19.00
SAR (W/Kg)	0.6232	0.3925	0.2191	0.1305	0.0893



Hot spot position





WCDMA Band II

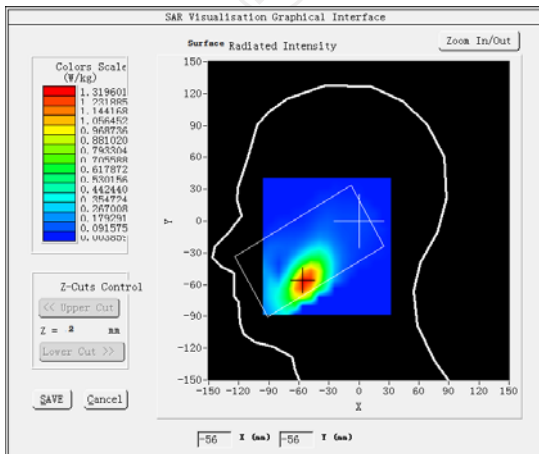
**MEASUREMENT 1**

Middle Band SAR (Channel 9400):

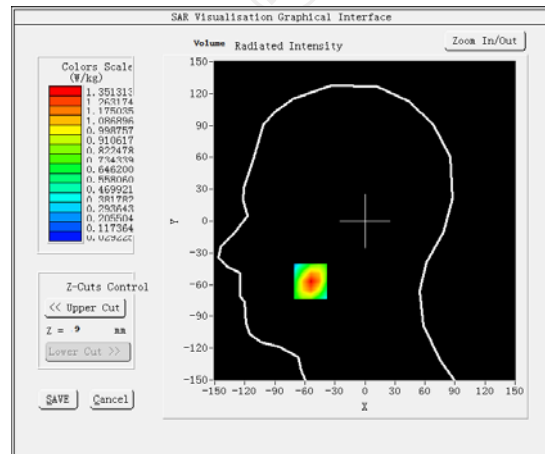
Date: 07/09/2017

<b>Frequency (MHz)</b>	1880.000000
<b>Relative permittivity (real part)</b>	39.076721
<b>Relative permittivity (imaginary part)</b>	12.607061
<b>Conductivity (S/m)</b>	1.350609
<b>Variation (%)</b>	-1.030000
<b>Crest Factor</b>	1.0
<b>Probe Conversion factor</b>	4.85
<b>E-Field Probe:</b>	SSE5 (SN 07/15 EP248)
<b>Area Scan</b>	<u>dx=8mm dy=8mm, h= 5.00 mm</u>
<b>ZoomScan</b>	<u>5x5x7, dx=8mm dy=8mm</u> <u>dz=5mm, Complete/ndx=8mm dy=8mm, h=</u> <u>5.00 mm</u>
<b>Phantom</b>	<u>Right head</u>
<b>Device Position</b>	<u>Cheek</u>
<b>Band</b>	<u>BAND2 WCDMA1900</u>

**SURFACE SAR**



**VOLUME SAR**



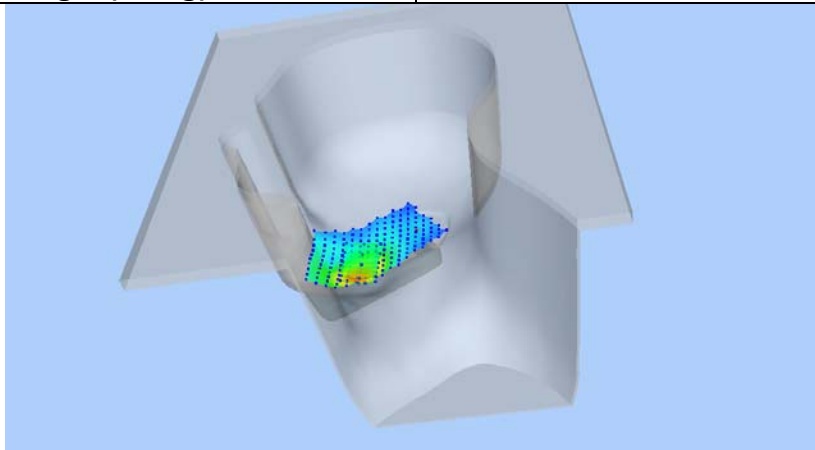
**Maximum location: X=-54.00, Y=-57.00 SAR Peak: 1.96 W/kg**

**SAR 10g (W/Kg)**

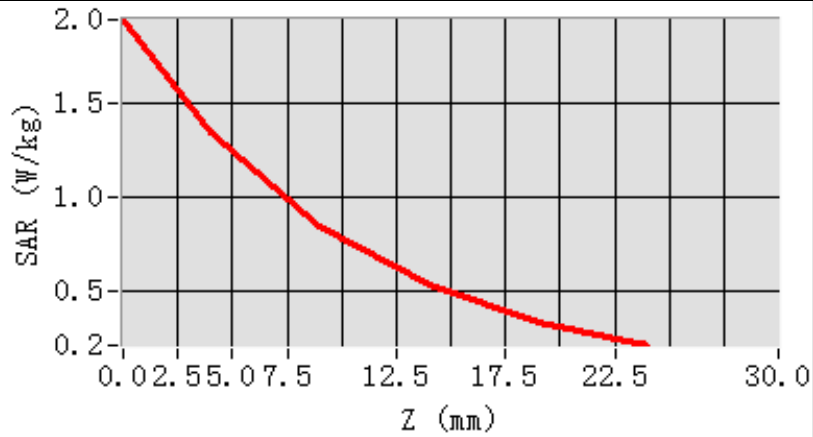
0.716435

**SAR 1g (W/Kg)**

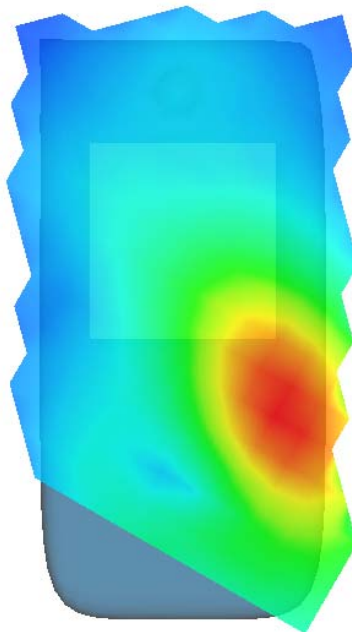
1.257615



Z (mm)	0.00	4.00	9.00	14.00	19.00
SAR (W/Kg)	1.9506	1.3513	0.8422	0.5268	0.3357



**Hot spot position**



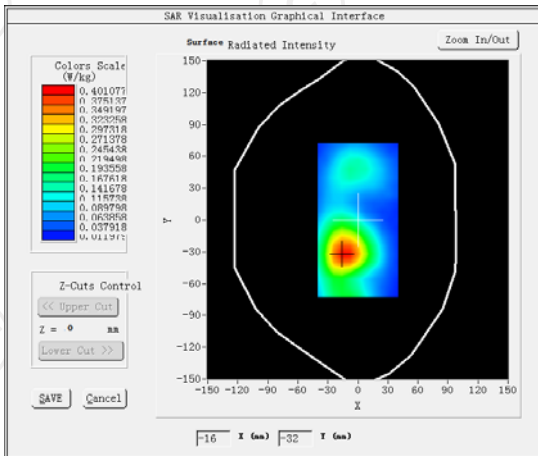
**MEASUREMENT 2**

Middle Band SAR (Channel 9400):

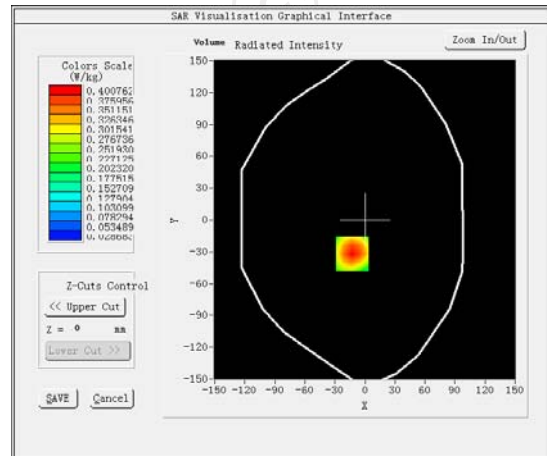
Date: 07/09/2017

<b>Frequency (MHz)</b>	1880.000000
<b>Relative permittivity (real part)</b>	53.320141
<b>Relative permittivity (imaginary part)</b>	14.232400
<b>Conductivity (S/m)</b>	1.503255
<b>Variation (%)</b>	-2.030000
<b>Crest Factor</b>	1.0
<b>Probe Conversion factor</b>	5.01
<b>E-Field Probe:</b>	SSE5 (SN 07/15 EP248)
<b>Area Scan</b>	<u>dx=8mm dy=8mm, h= 5.00 mm</u>
<b>ZoomScan</b>	<u>5x5x7, dx=8mm dy=8mm</u> <u>dz=5mm, Complete/ndx=8mm dy=8mm, h=</u> <u>5.00 mm</u>
<b>Phantom</b>	<u>Validation plane</u>
<b>Device Position</b>	<u>Body back(15mm)</u>
<b>Band</b>	<u>BAND2 WCDMA1900</u>

**SURFACE SAR**



**VOLUME SAR**



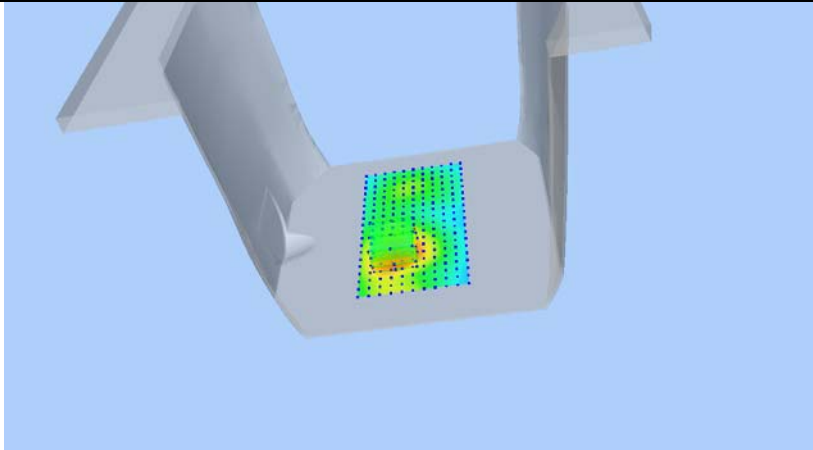
**Maximum location: X=-13.00, Y=-32.00 SAR Peak: 0.55 W/kg**

**SAR 10g (W/Kg)**

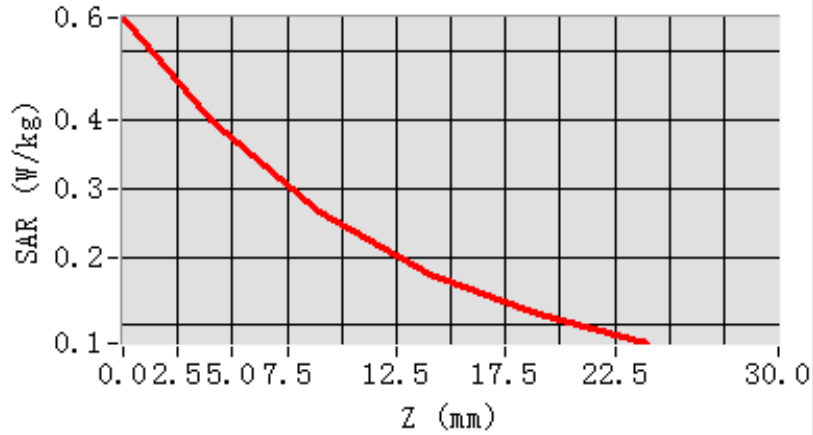
0.237729

**SAR 1g (W/Kg)**

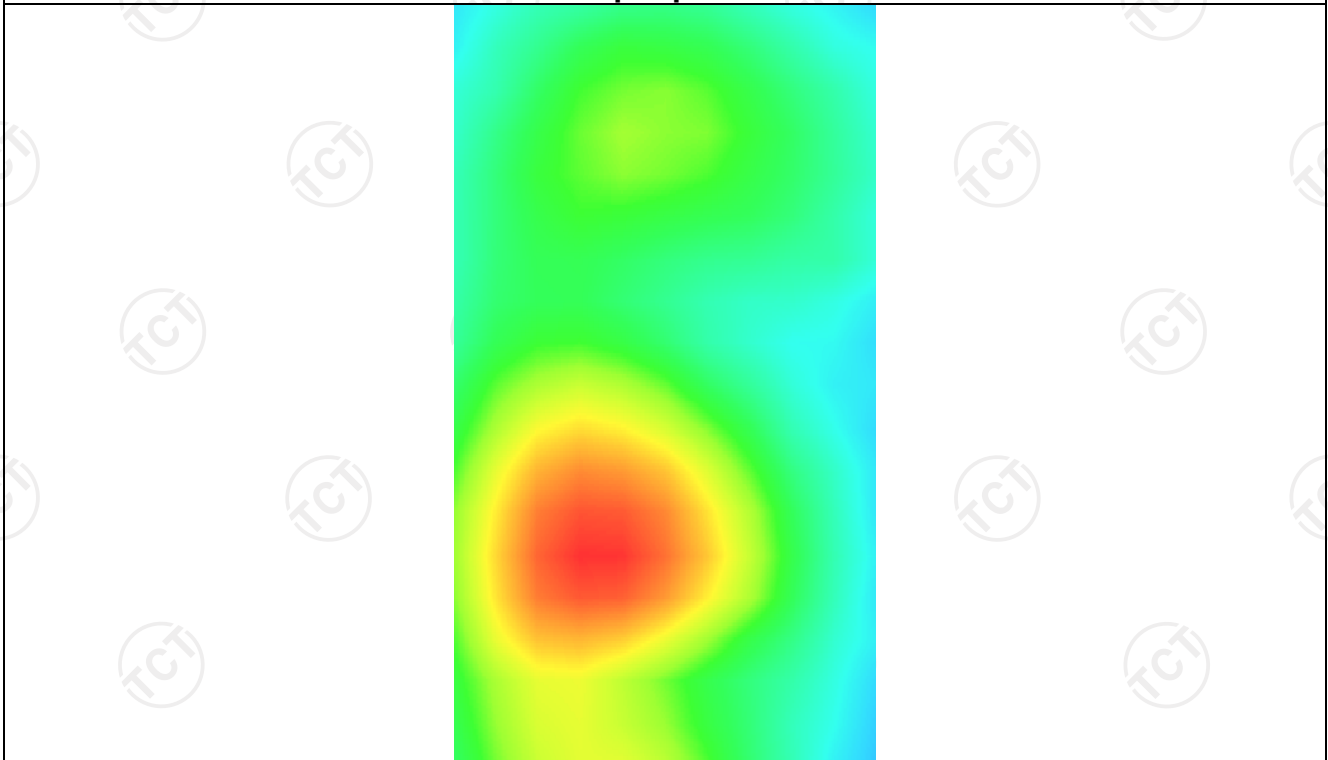
0.380054



Z (mm)	0.00	4.00	9.00	14.00	19.00
SAR (W/Kg)	0.5503	0.4008	0.2662	0.1762	0.1165



Hot spot position



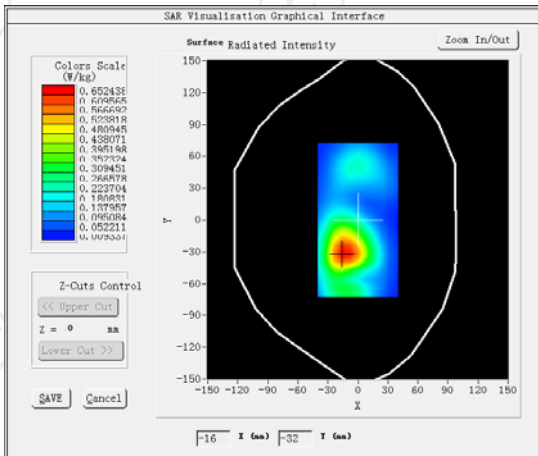
**MEASUREMENT 3**

Middle Band SAR (Channel 9400):

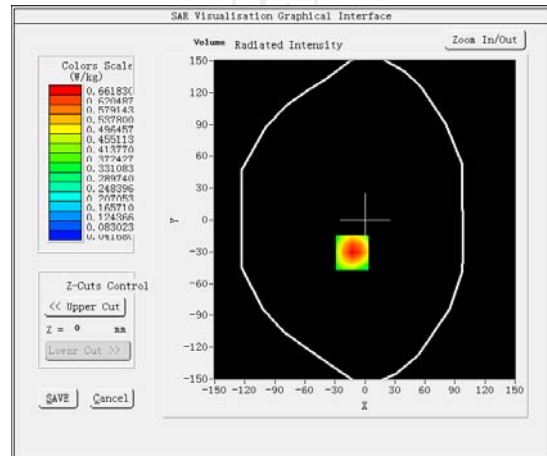
Date: 07/09/2017

<b>Frequency (MHz)</b>	1880.000000
<b>Relative permittivity (real part)</b>	53.320141
<b>Relative permittivity (imaginary part)</b>	14.232400
<b>Conductivity (S/m)</b>	1.503255
<b>Variation (%)</b>	0.090000
<b>Crest Factor</b>	1.0
<b>Probe Conversion factor</b>	5.01
<b>E-Field Probe:</b>	SSE5 (SN 07/15 EP248)
<b>Area Scan</b>	<u>dx=8mm dy=8mm, h= 5.00 mm</u>
<b>ZoomScan</b>	<u>5x5x7, dx=8mm dy=8mm</u> <u>dz=5mm, Complete/ndx=8mm dy=8mm, h=</u> <u>5.00 mm</u>
<b>Phantom</b>	<u>Validation plane</u>
<b>Device Position</b>	<u>Body back(10mm)</u>
<b>Band</b>	<u>BAND2 WCDMA1900(hotspot)</u>

**SURFACE SAR**



**VOLUME SAR**



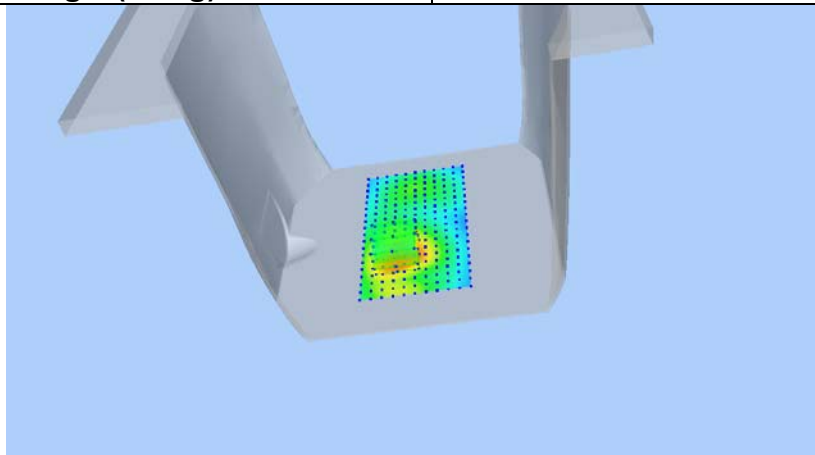
**Maximum location: X=-13.00, Y=-31.00 SAR Peak: 0.91 W/kg**

**SAR 10g (W/Kg)**

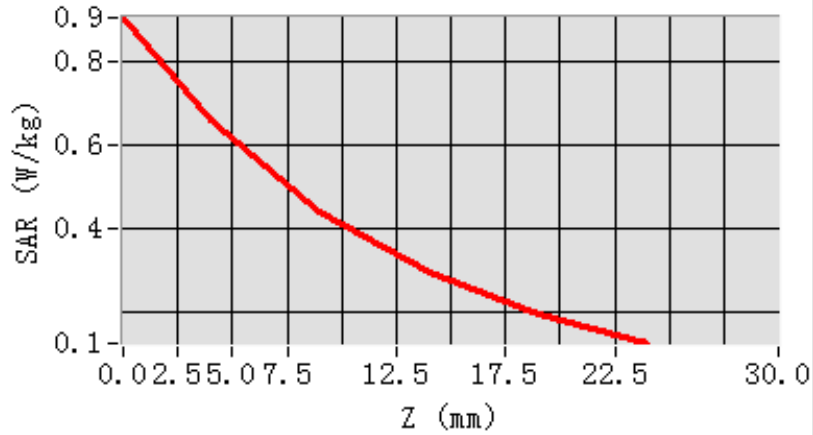
0.388729

**SAR 1g (W/Kg)**

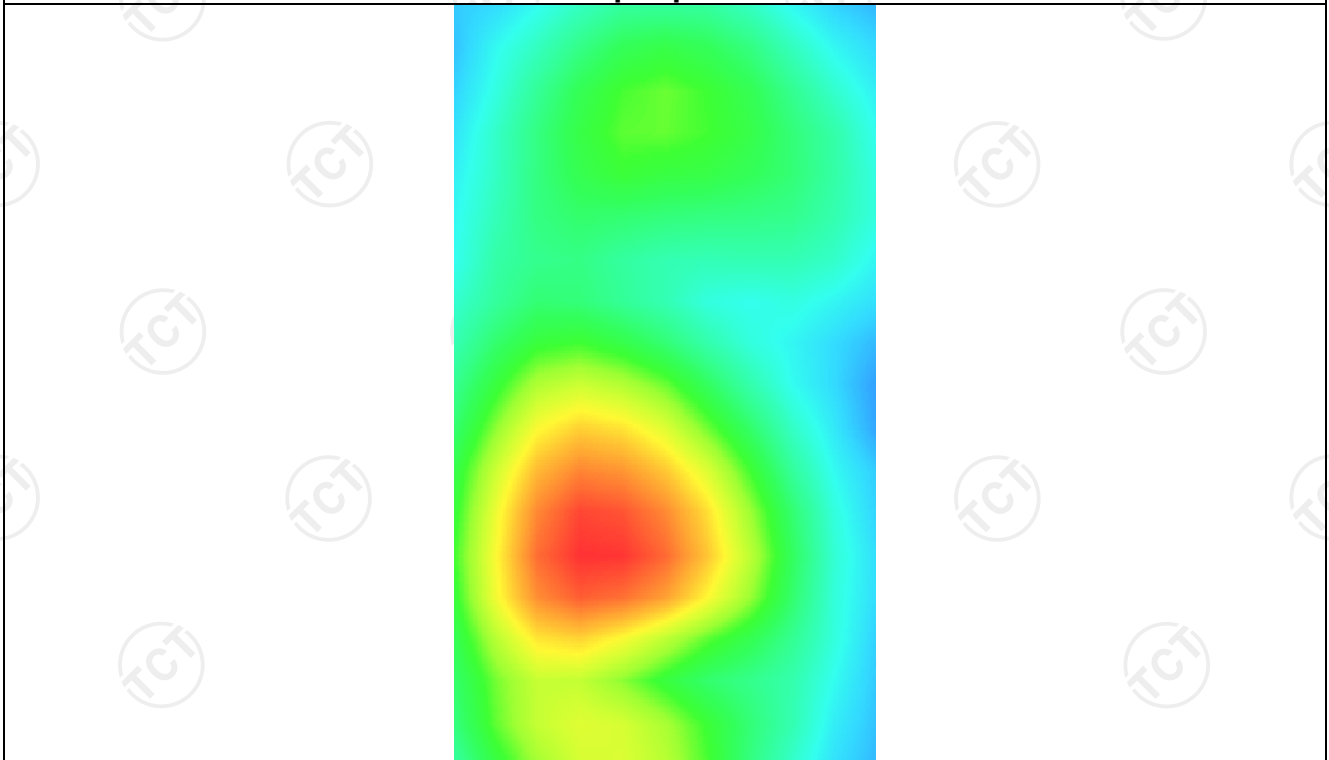
0.627655



Z (mm)	0.00	4.00	9.00	14.00	19.00
SAR (W/Kg)	0.9058	0.6618	0.4414	0.2930	0.1940



Hot spot position



WCDMA Band V

**MEASUREMENT 1**

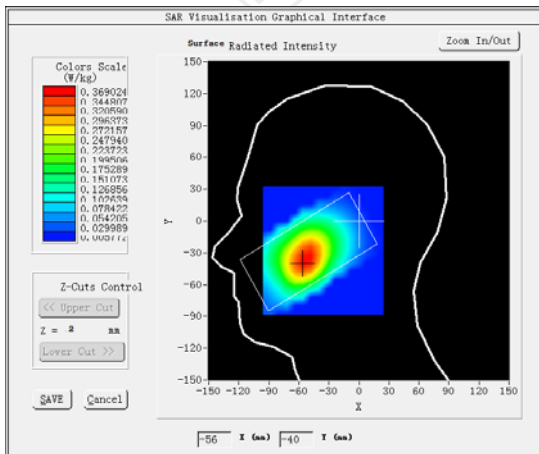
Middle Band SAR (Channel 4182):

Date: 07/08/2017

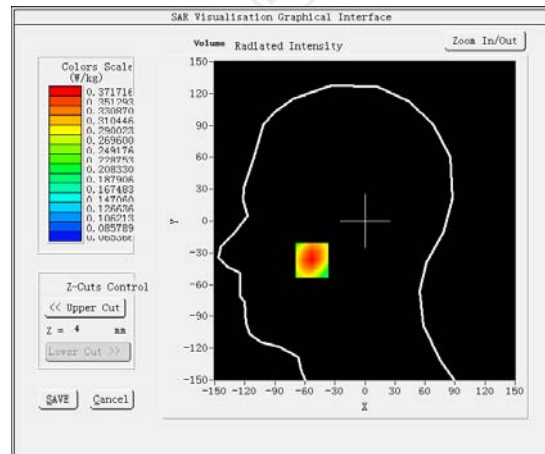
<b>Frequency (MHz)</b>	836.600000
<b>Relative permittivity (real part)</b>	41.417760
<b>Relative permittivity (imaginary part)</b>	18.129852
<b>Conductivity (S/m)</b>	0.874923
<b>Variation (%)</b>	-0.330000
<b>Crest Factor:</b>	1.0
<b>Probe Conversion factor</b>	5.50
<b>E-Field Probe:</b>	SSE5 (SN 07/15 EP248)
<b>Area Scan</b>	<u>dx=8mm dy=8mm, h= 5.00 mm</u>
<b>ZoomScan</b>	<u>5x5x7, dx=8mm dy=8mm</u> <u>dz=5mm, Complete/ndx=8mm dy=8mm, h=</u> <u>5.00 mm</u>
<b>Phantom</b>	<u>Left head</u>
<b>Device Position</b>	<u>Cheek</u>

**Band** BAND5 WCDMA850

**SURFACE SAR**



**VOLUME SAR**



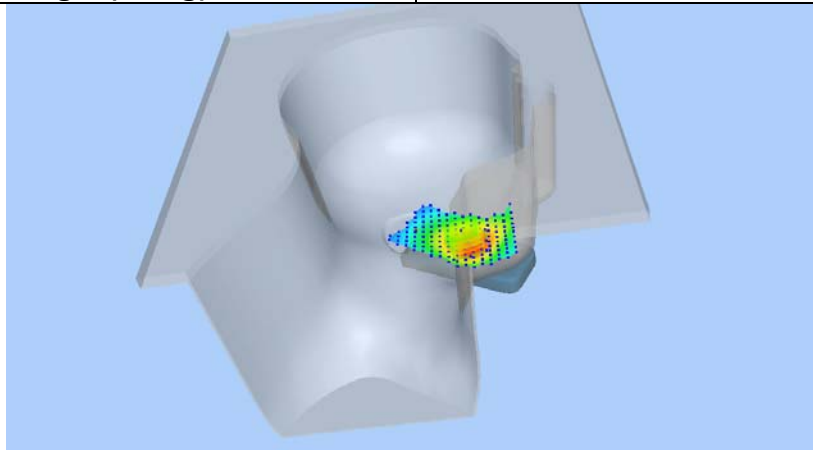
**Maximum location: X=-53.00, Y=-37.00 SAR Peak: 0.44 W/kg**

**SAR 10g (W/Kg)**

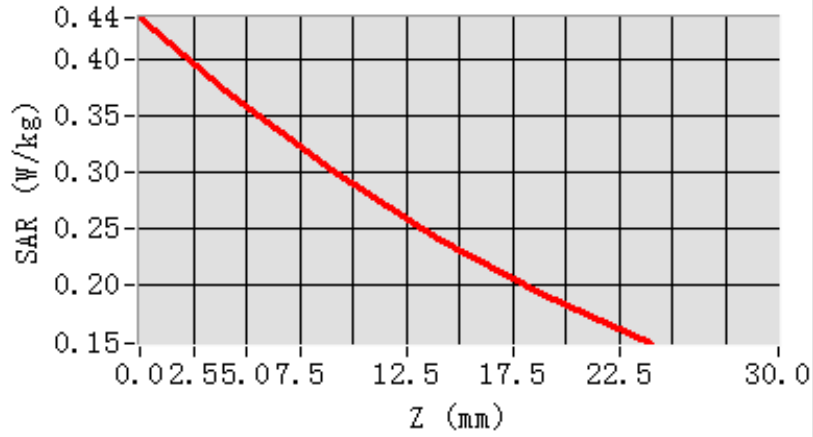
0.265108

**SAR 1g (W/Kg)**

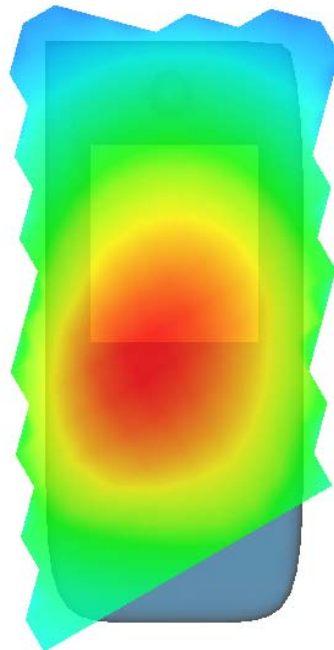
0.357215



Z (mm)	0.00	4.00	9.00	14.00	19.00
SAR (W/Kg)	0.4366	0.3717	0.3015	0.2422	0.1922



**Hot spot position**





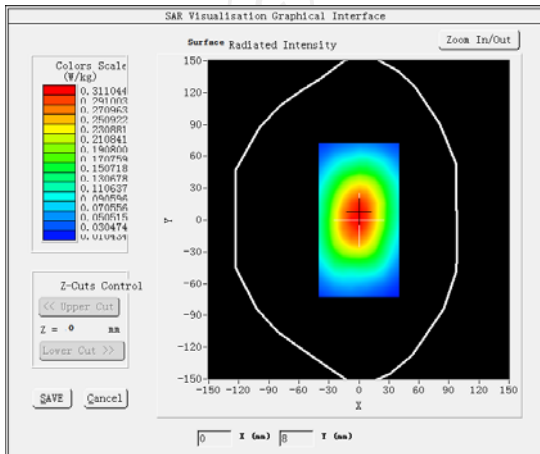
**MEASUREMENT 2**

Middle Band SAR (Channel 4182):

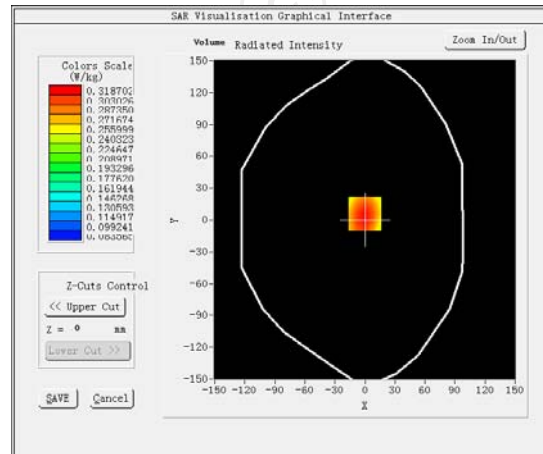
Date: 07/08/2017

<b>Frequency (MHz)</b>	836.400024
<b>Relative permittivity (real part)</b>	55.242077
<b>Relative permittivity (imaginary part)</b>	21.378187
<b>Conductivity (S/m)</b>	0.940253
<b>Variation (%)</b>	-1.260000
<b>Crest Factor:</b>	1.0
<b>Probe Conversion factor</b>	5.65
<b>E-Field Probe:</b>	SSE5 (SN 07/15 EP248)
<b>Area Scan</b>	<u>dx=8mm dy=8mm, h= 5.00 mm</u>
<b>ZoomScan</b>	<u>5x5x7, dx=8mm dy=8mm</u> <u>dz=5mm, Complete/ndx=8mm dy=8mm, h=</u> <u>5.00 mm</u>
<b>Phantom</b>	<u>Validation plane</u>
<b>Device Position</b>	<u>Body back(15mm)</u>
<b>Band</b>	<u>BAND5 WCDMA850</u>

**SURFACE SAR**



**VOLUME SAR**



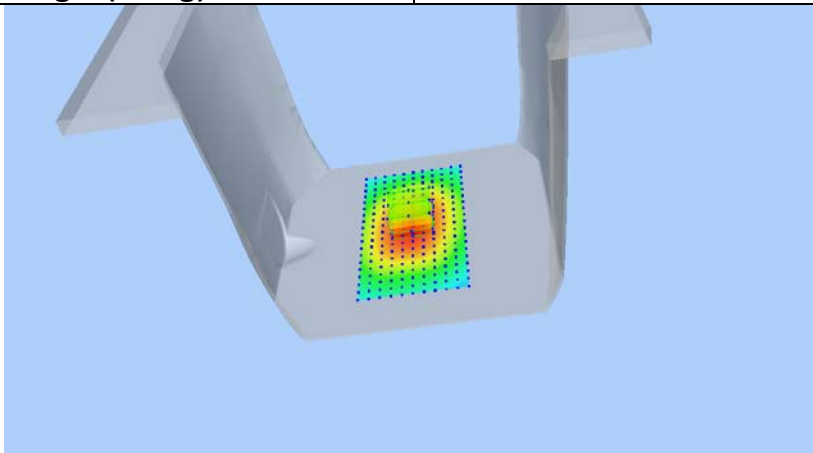
**Maximum location: X=0.00, Y=6.00 SAR Peak: 0.39 W/kg**

**SAR 10g (W/Kg)**

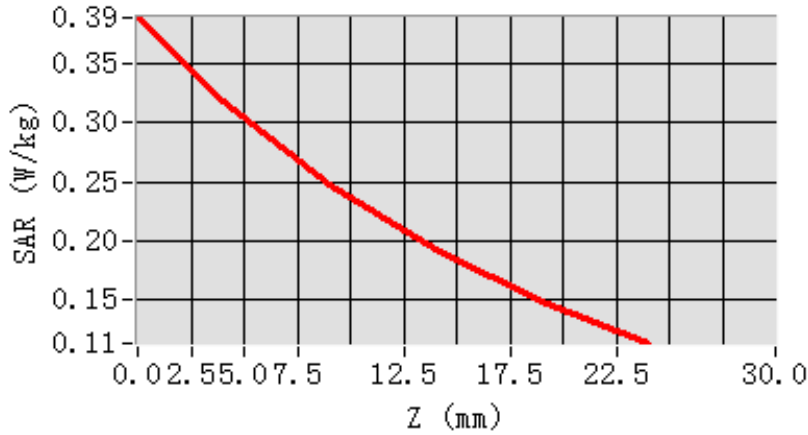
0.231358

**SAR 1g (W/Kg)**

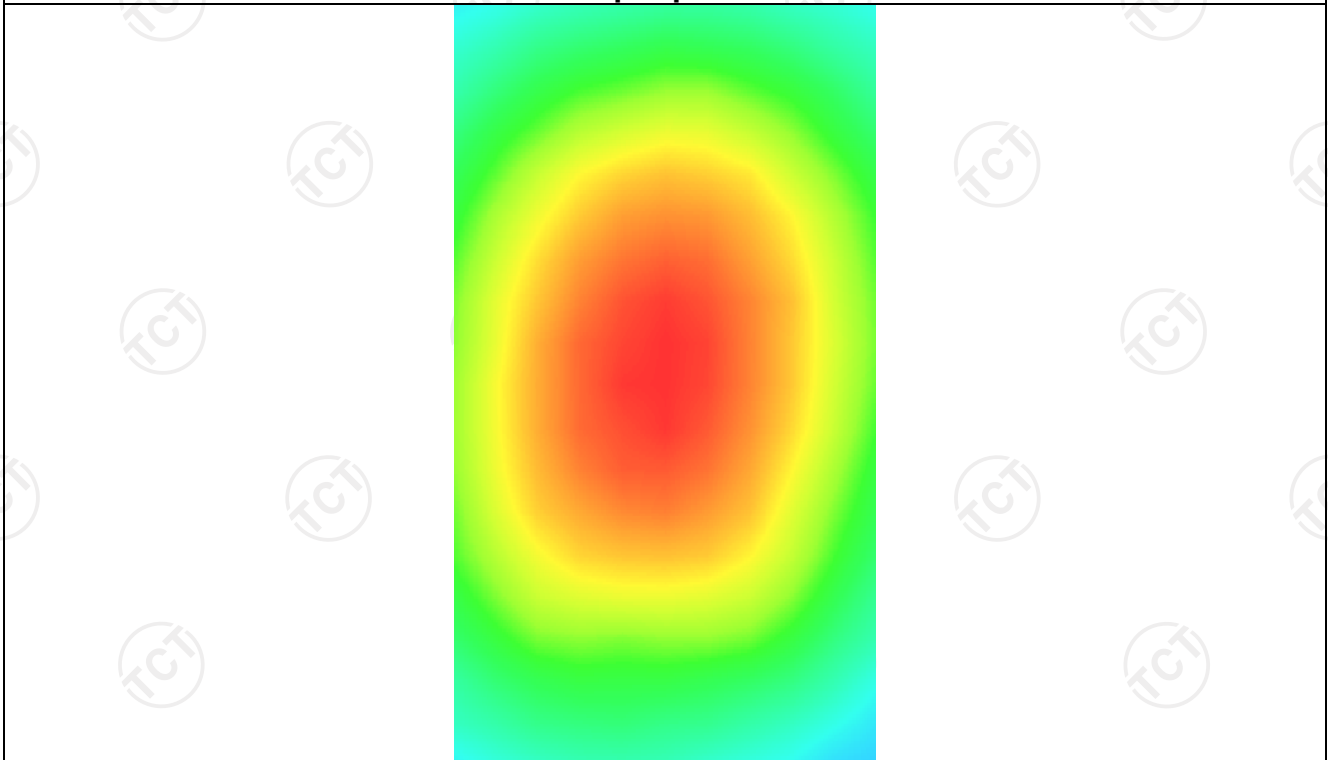
0.314162



Z (mm)	0.00	4.00	9.00	14.00	19.00
SAR (W/Kg)	0.3881	0.3187	0.2481	0.1929	0.1496



Hot spot position



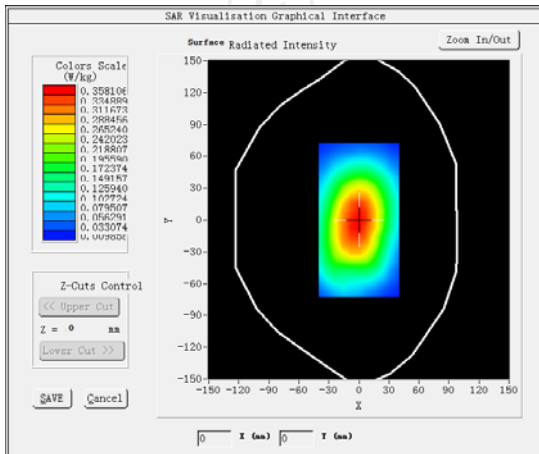
**MEASUREMENT 3**

Middle Band SAR (Channel 4182):

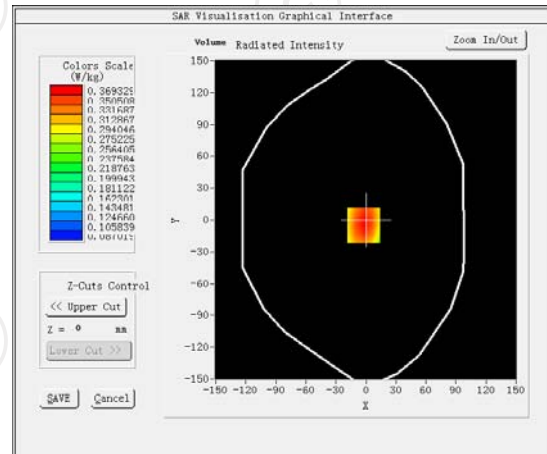
Date: 07/08/2017

Frequency (MHz)	836.400024
Relative permittivity (real part)	55.242077
Relative permittivity (imaginary part)	21.378187
Conductivity (S/m)	0.940253
Variation (%)	0.130000
Crest Factor:	1.0
Probe Conversion factor	5.65
E-Field Probe:	SSE5 (SN 07/15 EP248)
Area Scan	<u>dx=8mm dy=8mm, h= 5.00 mm</u>
ZoomScan	<u>5x5x7, dx=8mm dy=8mm</u> <u>dz=5mm, Complete/ndx=8mm dy=8mm,</u> <u>h= 5.00 mm</u>
Phantom	<u>Validation plane</u>
Device Position	<u>Body back(10mm)</u>
Band	<u>BAND5_WCDMA850(hotspot)</u>

**SURFACE SAR**



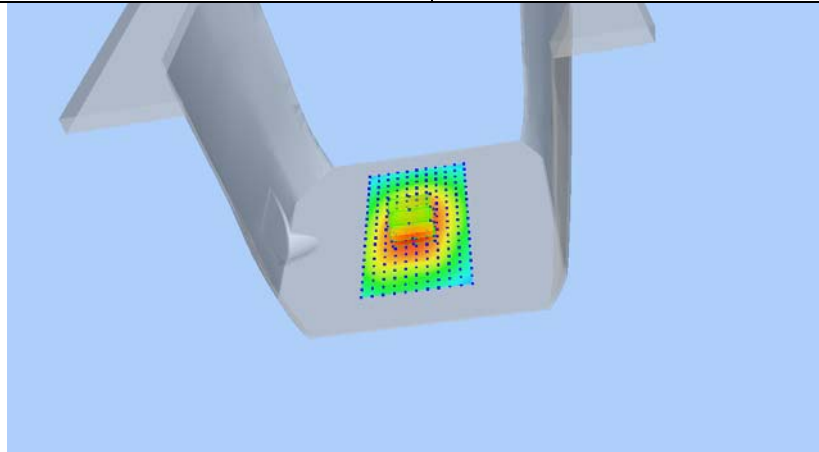
**VOLUME SAR**



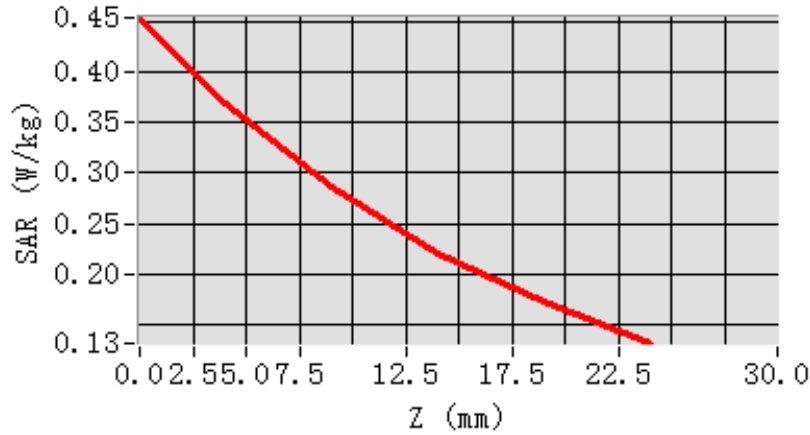
Maximum location: X=-2.00, Y=-5.00 SAR Peak: 0.45 W/kg

SAR 10g (W/Kg) 0.266584

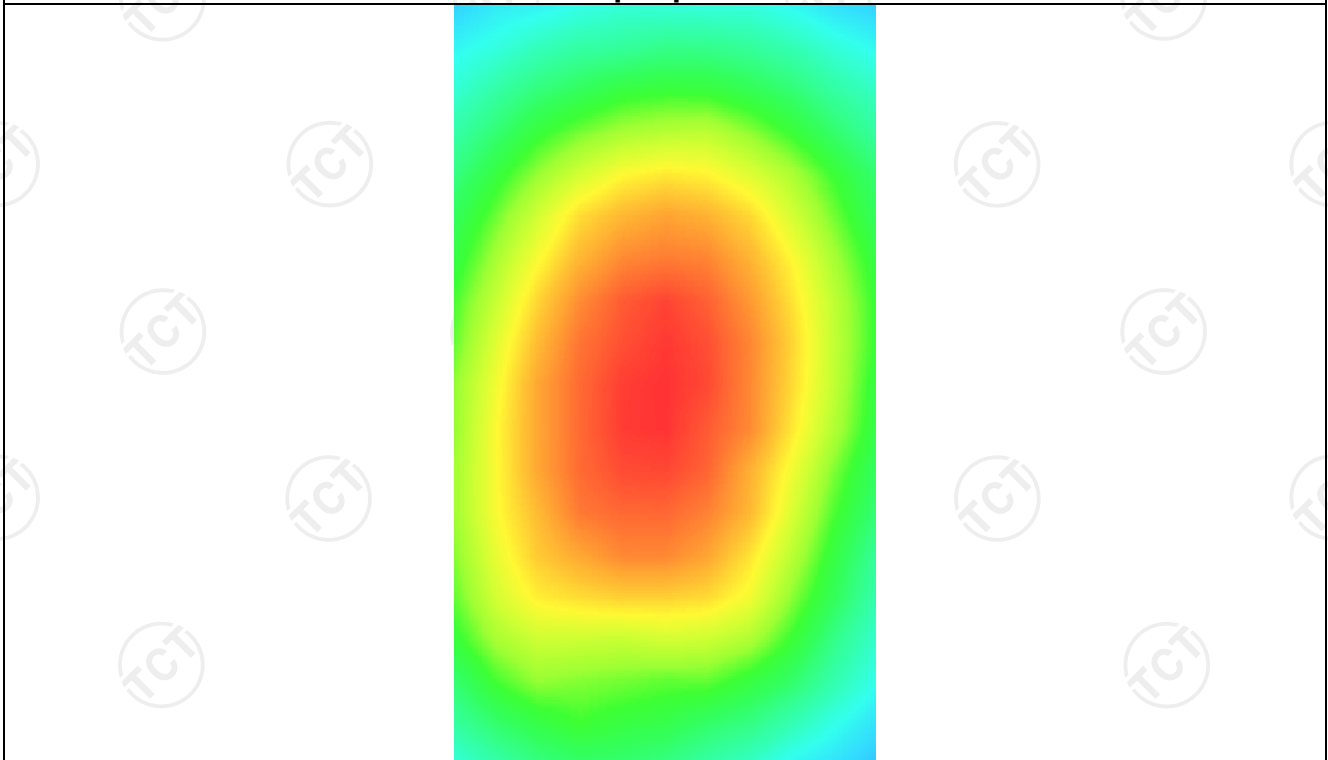
SAR 1g (W/Kg) 0.362976



Z (mm)	0.00	4.00	9.00	14.00	19.00
SAR (W/Kg)	0.4531	0.3693	0.2855	0.2212	0.1718



Hot spot position



WLAN 2.4

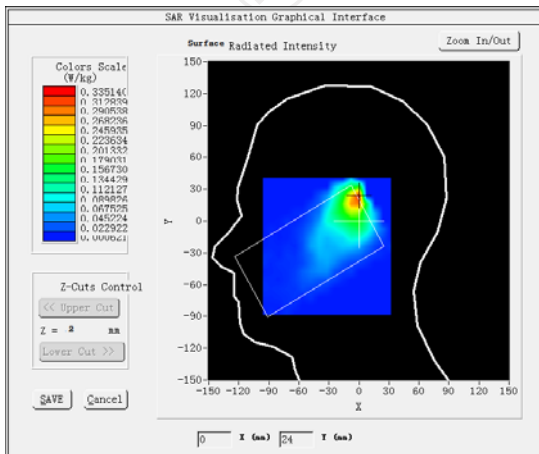
**MEASUREMENT 1**

Lower Band SAR (Channel 1):

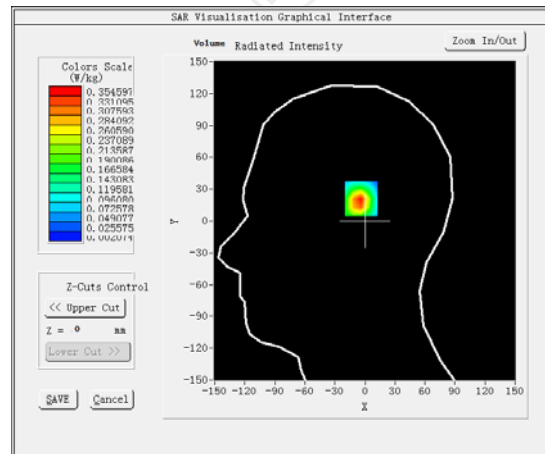
Date: 07/10/2017

<b>Frequency (MHz)</b>	2412.000000
<b>Relative permittivity (real part)</b>	37.842510
<b>Relative permittivity (imaginary part)</b>	13.546980
<b>Conductivity (S/m)</b>	1.793261
<b>Variation (%)</b>	0.800000
<b>Crest Factor</b>	1.0
<b>Probe Conversion factor</b>	4.58
<b>E-Field Probe:</b>	SSE5 (SN 07/15 EP248)
<b>Area Scan</b>	<u>dx=8mm dy=8mm, h= 5.00 mm</u>
<b>ZoomScan</b>	<u>5x5x7, dx=8mm dy=8mm</u> <u>dz=5mm, Complete/ndx=8mm dy=8mm, h=</u> <u>5.00 mm</u>
<b>Phantom</b>	<u>Right head</u>
<b>Device Position</b>	<u>Cheek</u>
<b>Band</b>	<u>IEEE 802.11b ISM</u>

**SURFACE SAR**



**VOLUME SAR**



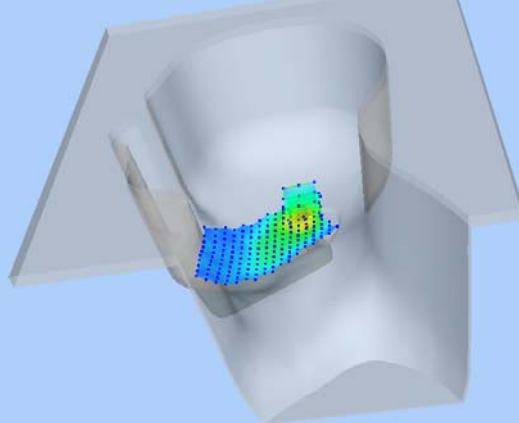
Maximum location: X=-1.00, Y=22.00 SAR Peak: 0.58 W/kg

**SAR 10g (W/Kg)**

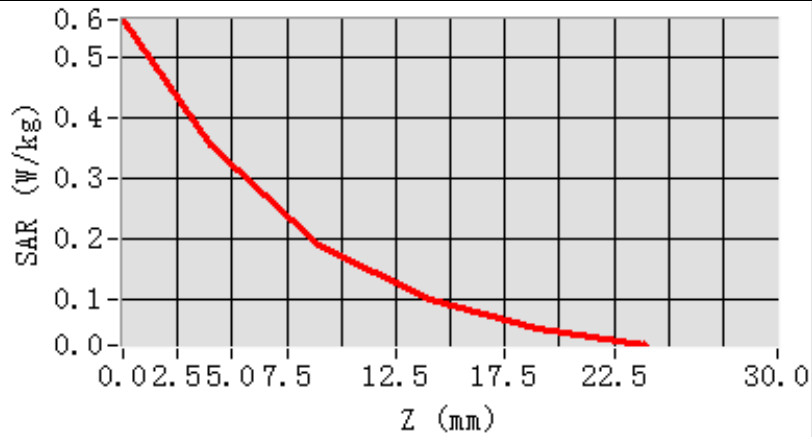
0.162170

**SAR 1g (W/Kg)**

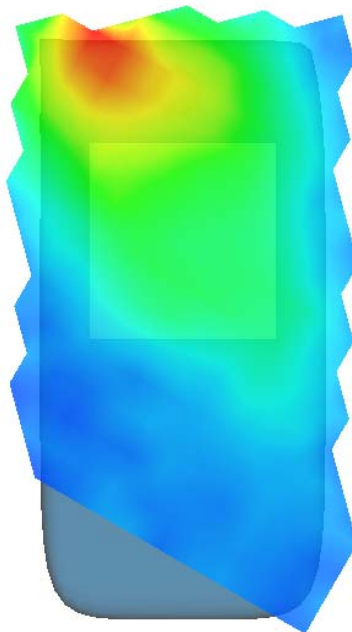
0.337554



Z (mm)	0.00	4.00	9.00	14.00	19.00
SAR (W/Kg)	0.5640	0.3546	0.1899	0.0985	0.0502



**Hot spot position**



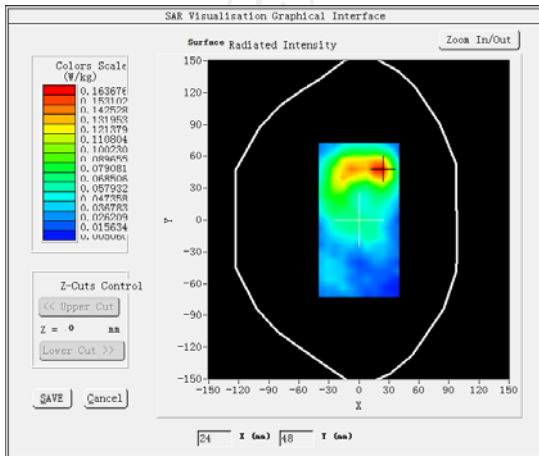
**MEASUREMENT 2**

Lower Band SAR (Channel 1):

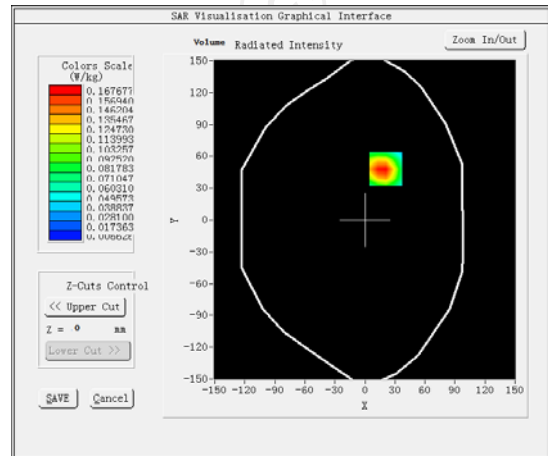
Date: 07/10/2017

Frequency (MHz)	241200000
Relative permittivity (real part)	54.650265
Relative permittivity (imaginary part)	14.318444
Conductivity (S/m)	1.973526
Variation (%)	-3.260000
Crest Factor	1.0
Probe Conversion factor	4.70
E-Field Probe:	SSE5 (SN 07/15 EP248)
Area Scan	<u>dx=8mm dy=8mm, h= 5.00 mm</u>
ZoomScan	<u>5x5x7, dx=8mm dy=8mm</u> <u>dz=5mm, Complete/ndx=8mm dy=8mm, h=</u> <u>5.00 mm</u>
Phantom	Validation plane
Device Position	Body back(15mm)
Band	<u>IEEE 802.11b ISM</u>

**SURFACE SAR**



**VOLUME SAR**



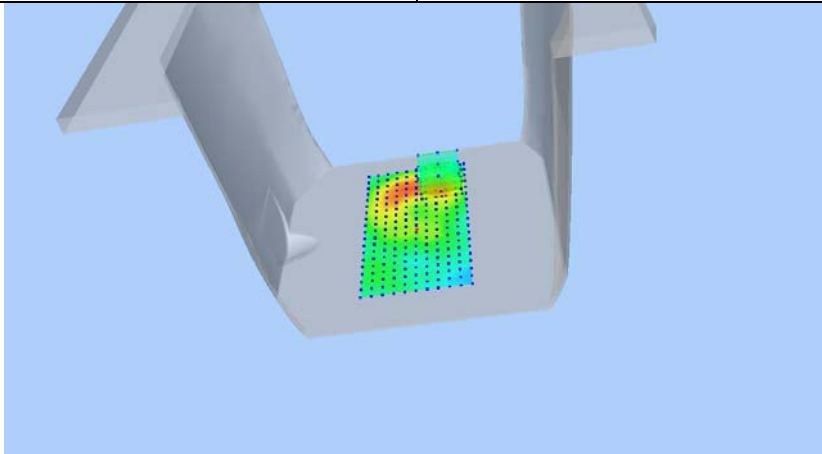
Maximum location: X=21.00, Y=48.00 SAR Peak: 0.26 W/kg

SAR 10g (W/Kg)

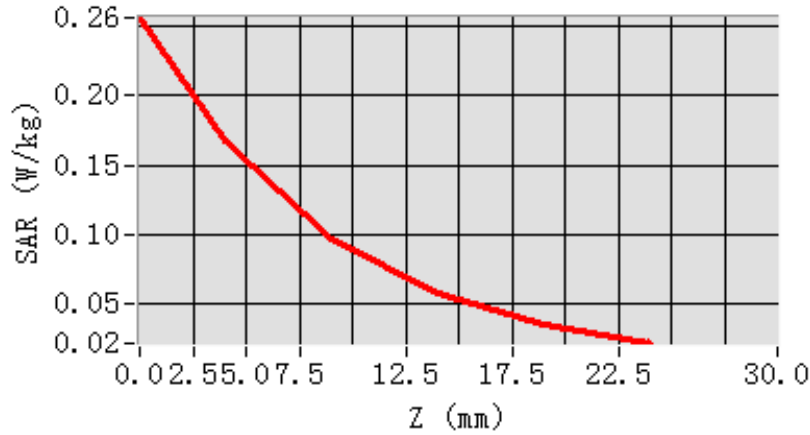
0.088755

SAR 1g (W/Kg)

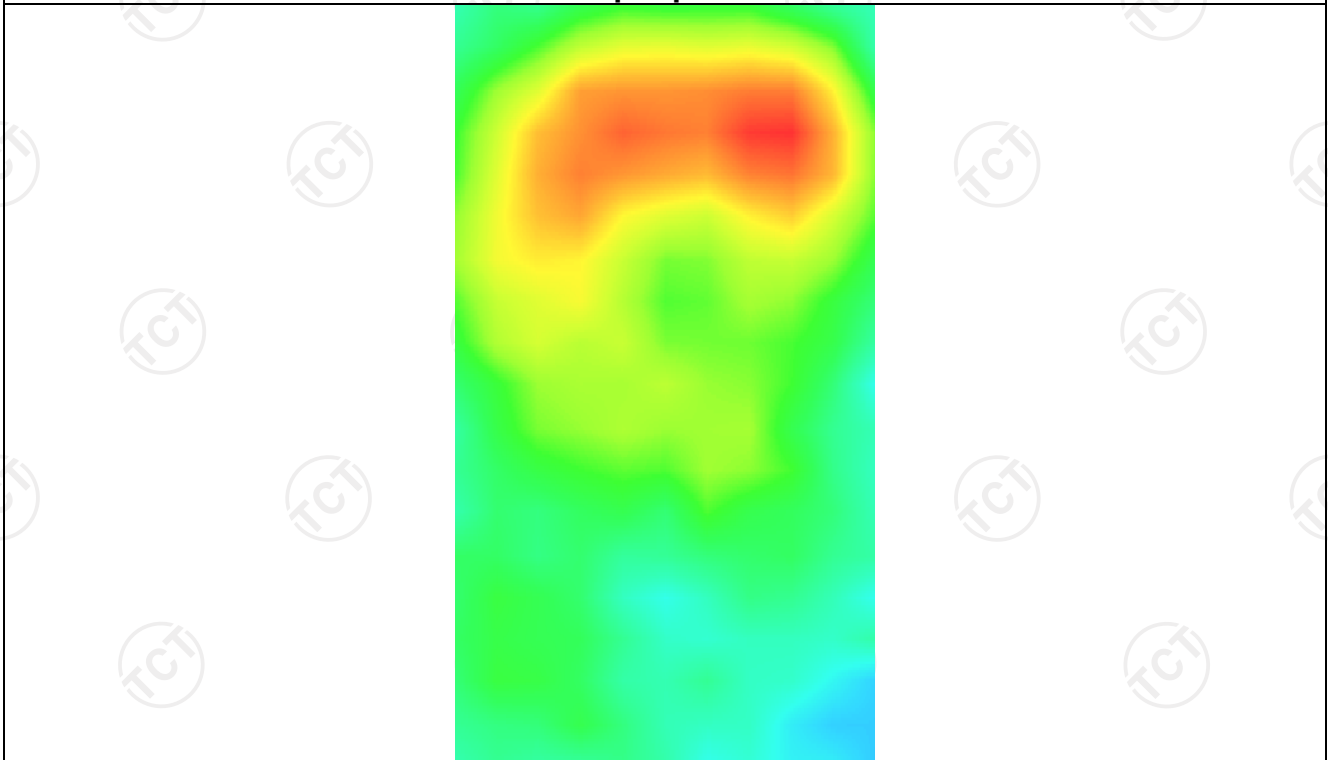
0.165646



Z (mm)	0.00	4.00	9.00	14.00	19.00
SAR (W/Kg)	0.2568	0.1677	0.0965	0.0562	0.0342



Hot spot position





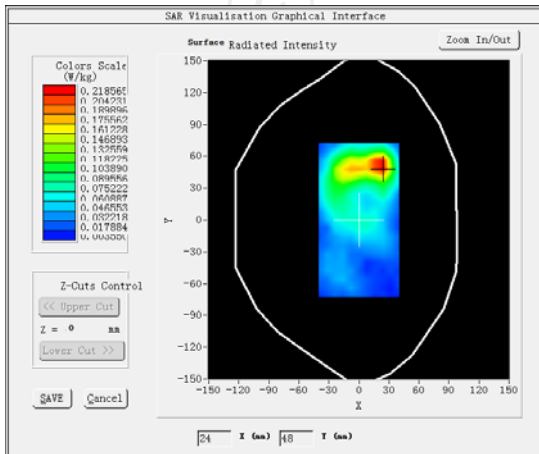
**MEASUREMENT 3**

Lower Band SAR (Channel 1):

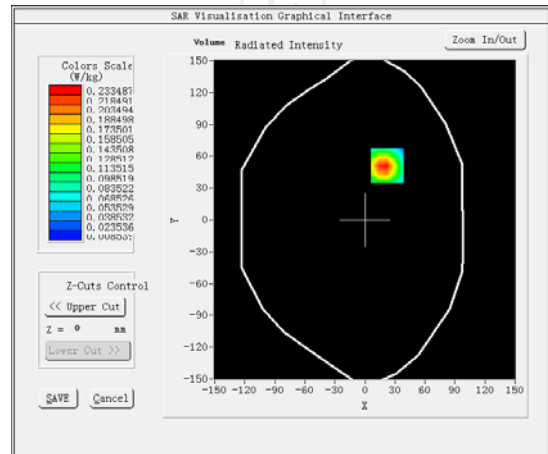
Date: 07/10/2017

Frequency (MHz)	2412.000000
Relative permittivity (real part)	54.650265
Relative permittivity (imaginary part)	14.318444
Conductivity (S/m)	1.973526
Variation (%)	3.150000
Crest Factor	1.0
Probe Conversion factor	4.70
E-Field Probe:	SSE5 (SN 07/15 EP248)
Area Scan	<u>dx=8mm dy=8mm, h= 5.00 mm</u>
ZoomScan	<u>5x5x7, dx=8mm dy=8mm</u> <u>dz=5mm, Complete/ndx=8mm dy=8mm, h=</u> <u>5.00 mm</u>
Phantom	Validation plane
Device Position	Body back(10mm)
Band	<u>IEEE 802.11b ISM</u>

**SURFACE SAR**



**VOLUME SAR**



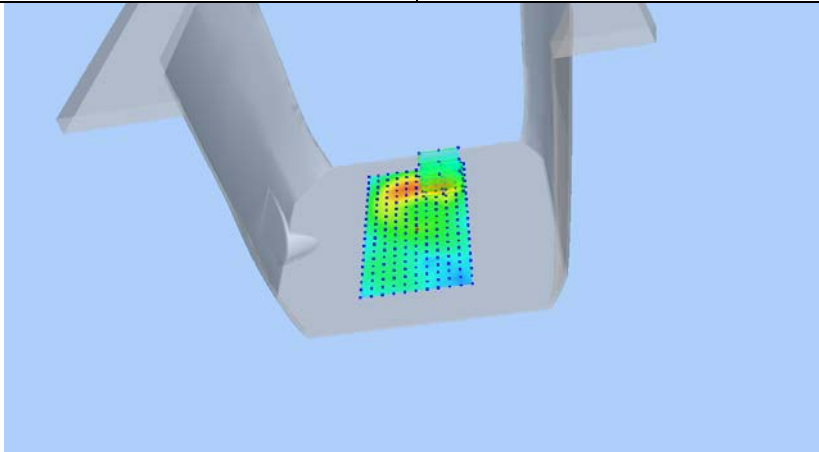
Maximum location: X=22.00, Y=51.00 SAR Peak: 0.38 W/kg

SAR 10g (W/Kg)

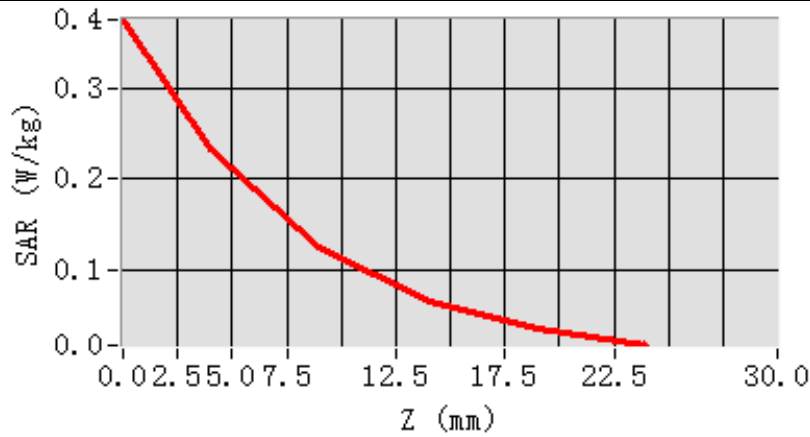
0.116491

SAR 1g (W/Kg)

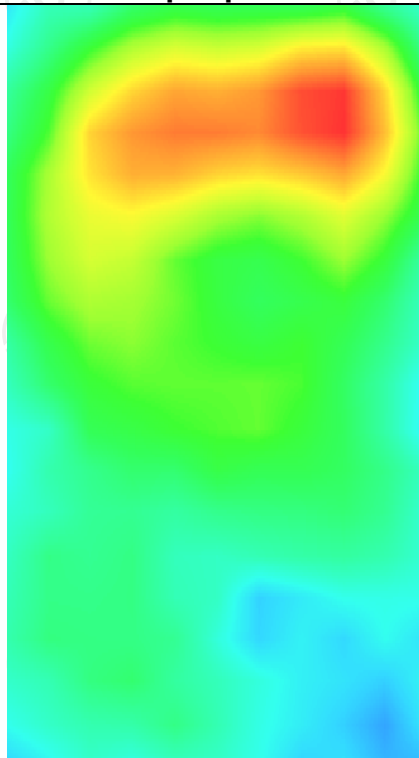
0.228596



Z (mm)	0.00	4.00	9.00	14.00	19.00
SAR (W/Kg)	0.3745	0.2335	0.1244	0.0652	0.0348



Hot spot position



### Appendix A: EUT Photos



### Liquid depth



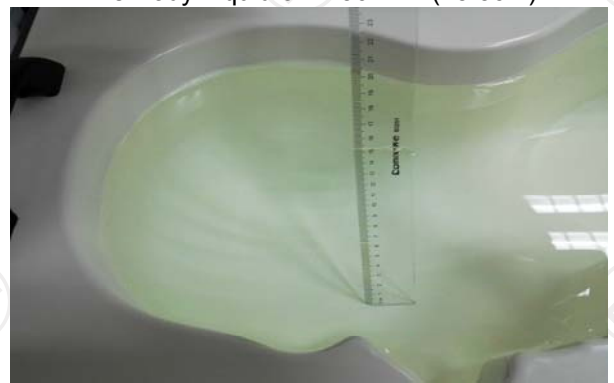
The Body Liquid of 835MHz (15.4cm)



The Body Liquid of 2450MHz (15.3cm)



The Body Liquid of 1900MHz (16.4 cm)



The Head Liquid of 835MHz (15.3cm)



The Head Liquid of 1900MHz (15.5cm)

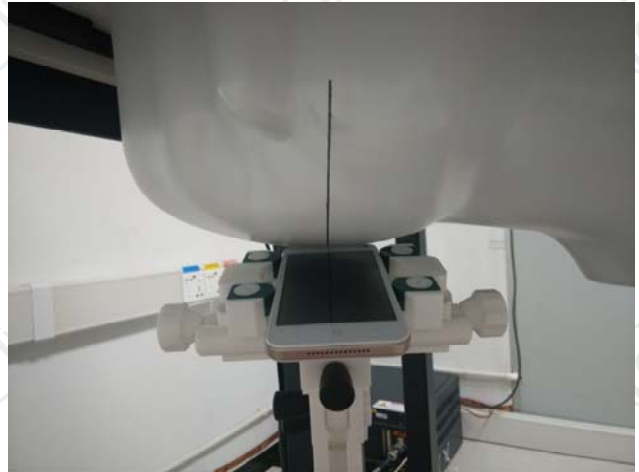


The Head Liquid of 2450MHz (15.6cm)

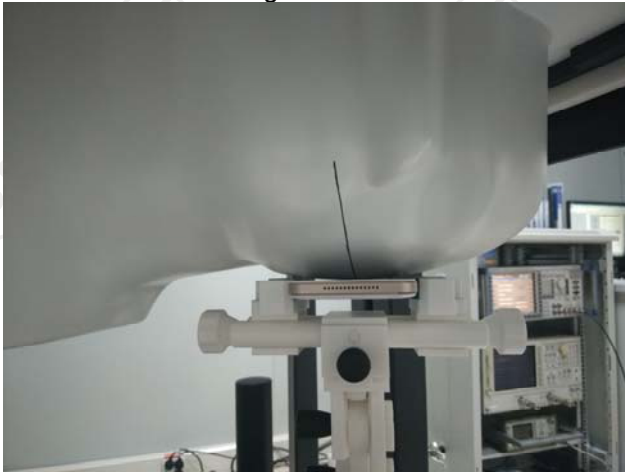
### Appendix B: Test Setup Photos



Right Cheek



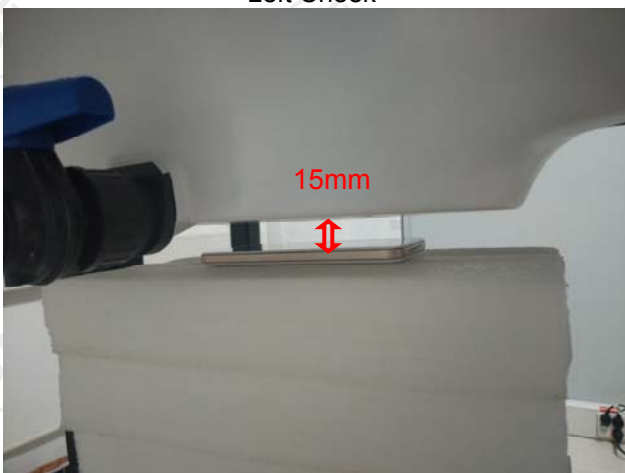
Right Tilted



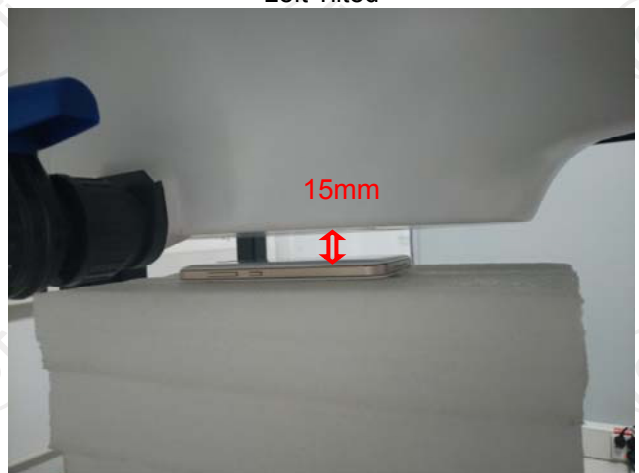
Left Cheek



Left Tilted



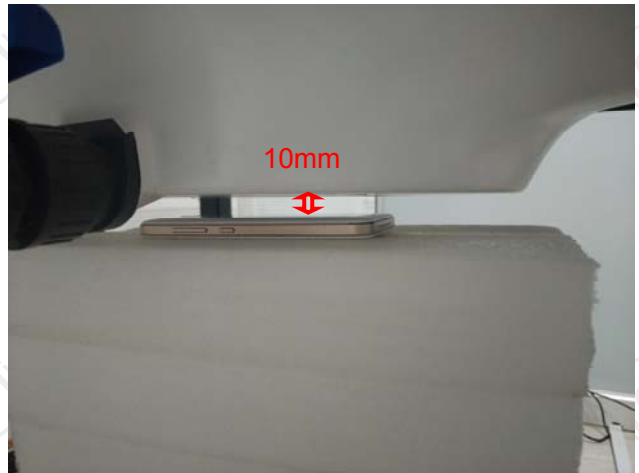
Body worn – Front (15mm)



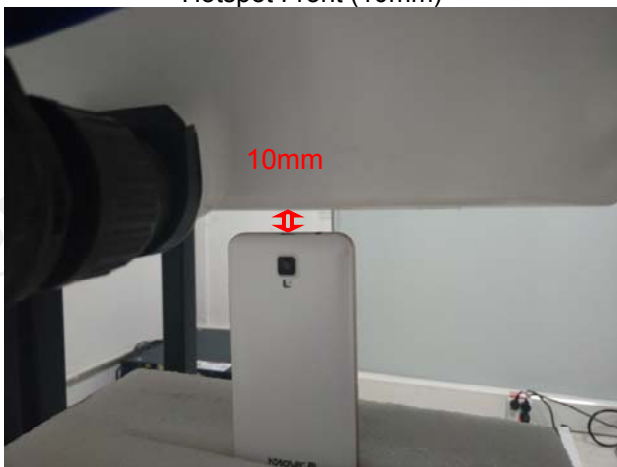
Body worn – Back (15mm)



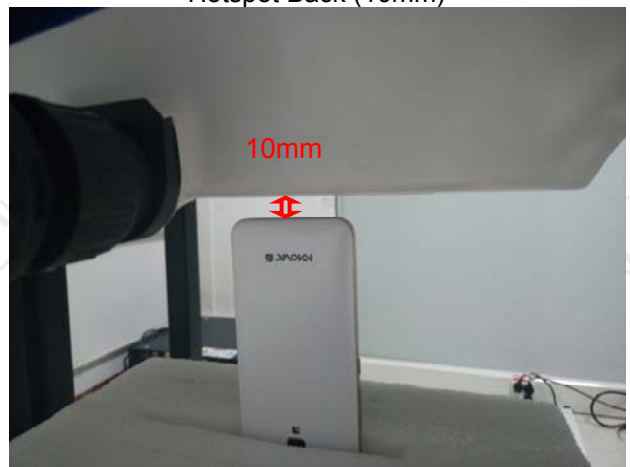
Hotspot Front (10mm)



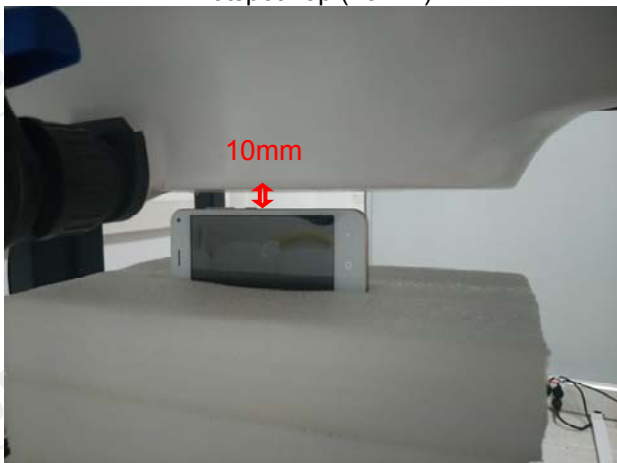
Hotspot Back (10mm)



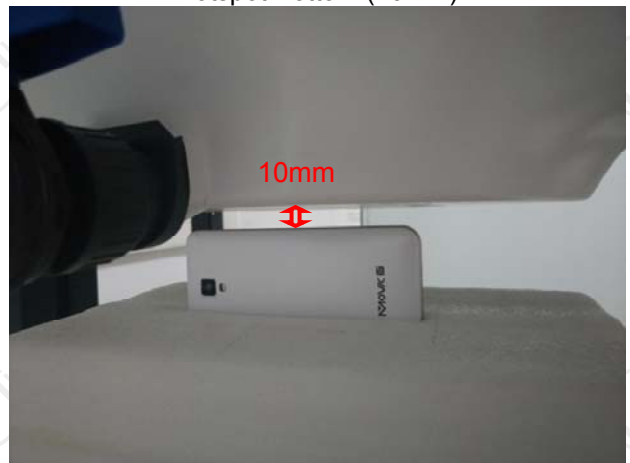
Hotspot Top (10mm)



Hotspot Bottom (10mm)



Hotspot Right (10mm)



Hotspot Left (10mm)