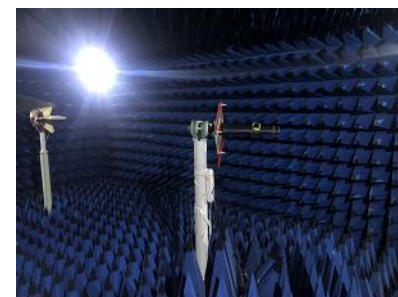


S8-4G antenna commissioning report

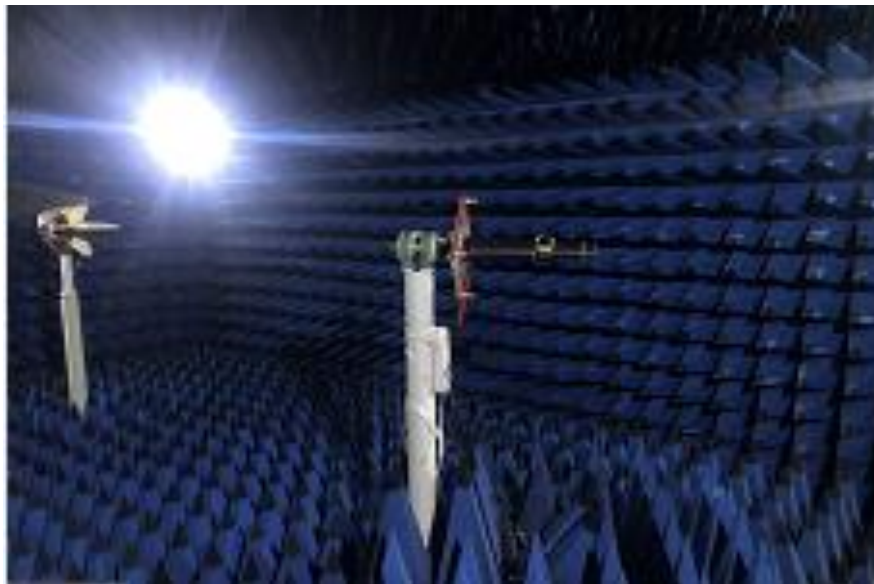
Radio frequency: Chen
Konghong

Date: August 12-2023



Project development environment

We are moving from the Internet era to the intelligent era, and the country is building a digital society and a smart city. In the next 5-10 years, there is a huge development potential in both the consumer electronics market and the Internet of Things market. The field of wireless communication is very diversified. In the future, relying on the customer platform advantages of the main antenna industry, Yusheng will strive to provide customers with professional product solutions with market competitiveness.



Yu Sheng communication products cover almost all wireless terminal equipment antenna applications, including car antenna, high precision surveying and mapping antenna, drone ground and satellite data navigation, high precision positioning antenna, medical equipment wireless transmission, consumer antenna (mobile phone antenna, PAD, laptop antenna), base station / indoor distribution antenna, smart wear antenna (smart watches, TWS headphones), security household antenna and a variety of wireless data transmission and wireless control of intelligent equipment antenna, etc.

1

Project commissioning brief

2

Outline of the report version

3

Antenna active parameters

6

Summary & additional note



Project commissioning brief

template	motherboard			
Frequency band and antenna material	main antenna	frequency range		material quality
		2G		FPC
		3G		
		4G	LTEB1/3/5//8/b38/39/40/41	
performance requirement	According to the customer's requirements			



Antenna active parameters-
1 #

Test	FDD B1			FDD B3		
Channel	18050	18300	18550	19250	19575	19900
TRP (dBm)	12.02	12.12	12.20	10.24	10.58	10.96
TIS (dBm)			-82.69			-82.41

Test	FDD B5			FDD B8		
Channel	20450	20525	20600	21500	21650	21750
TRP (dBm)		1.35			2.50	
TIS (dBm)						

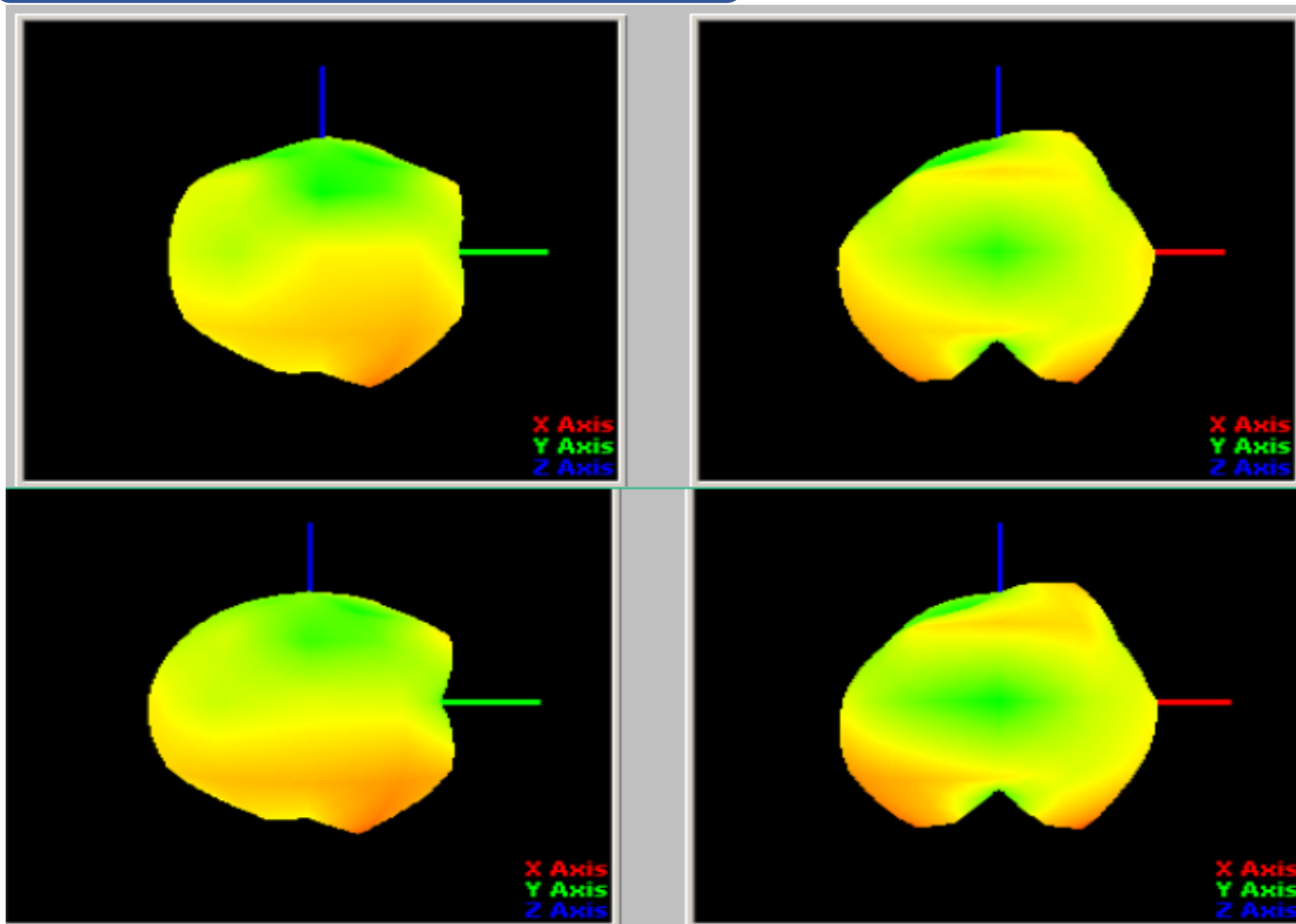


Antenna active parameters-1 #

Test	TDD B38			TDD B39		
Channel	37850	38000	38150	38350	38450	38550
TRP (dBm)	9.48	9.05	9.01	11.96	12.25	12.32
TIS (dBm)			-81.69			-83.25

Test	TDD B40			TDD B41		
Channel	38750	39150	39550	40240	40620	41140
TRP (dBm)	10.81	10.02	10.24		8.12	
TIS (dBm)			-82.11		-80.14	

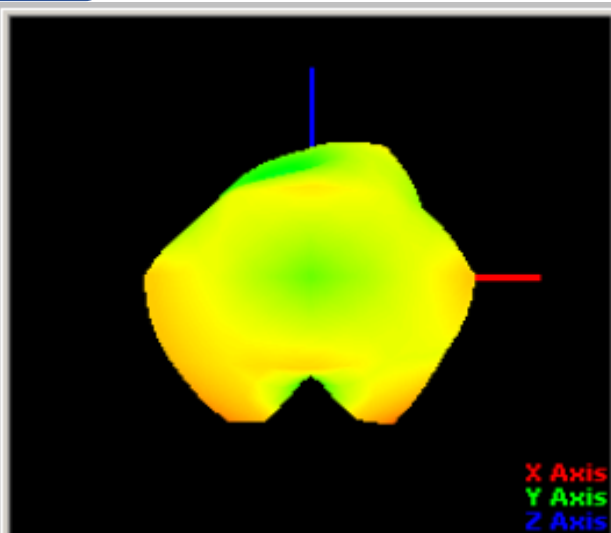
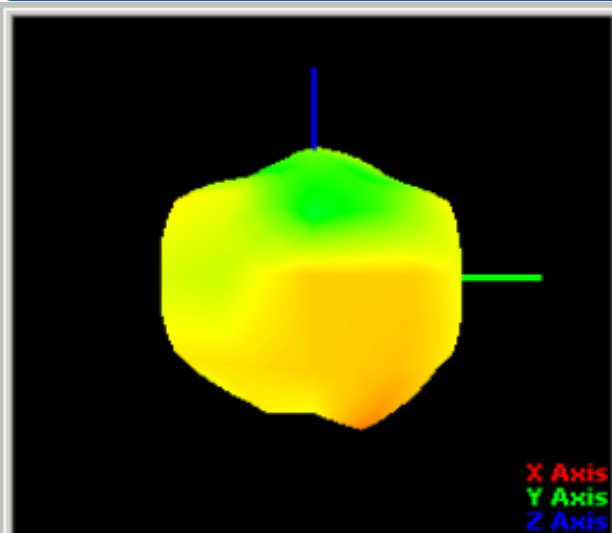
Antenna Directional Pattern



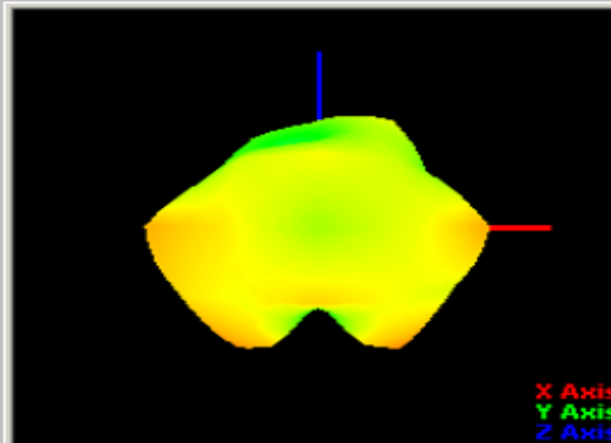
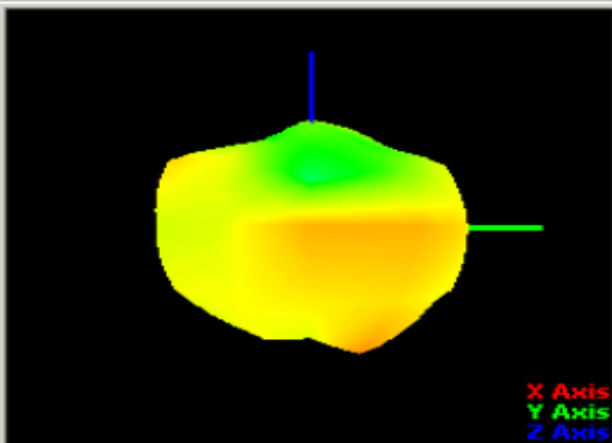
B1

B3

Antenna Directional Pattern

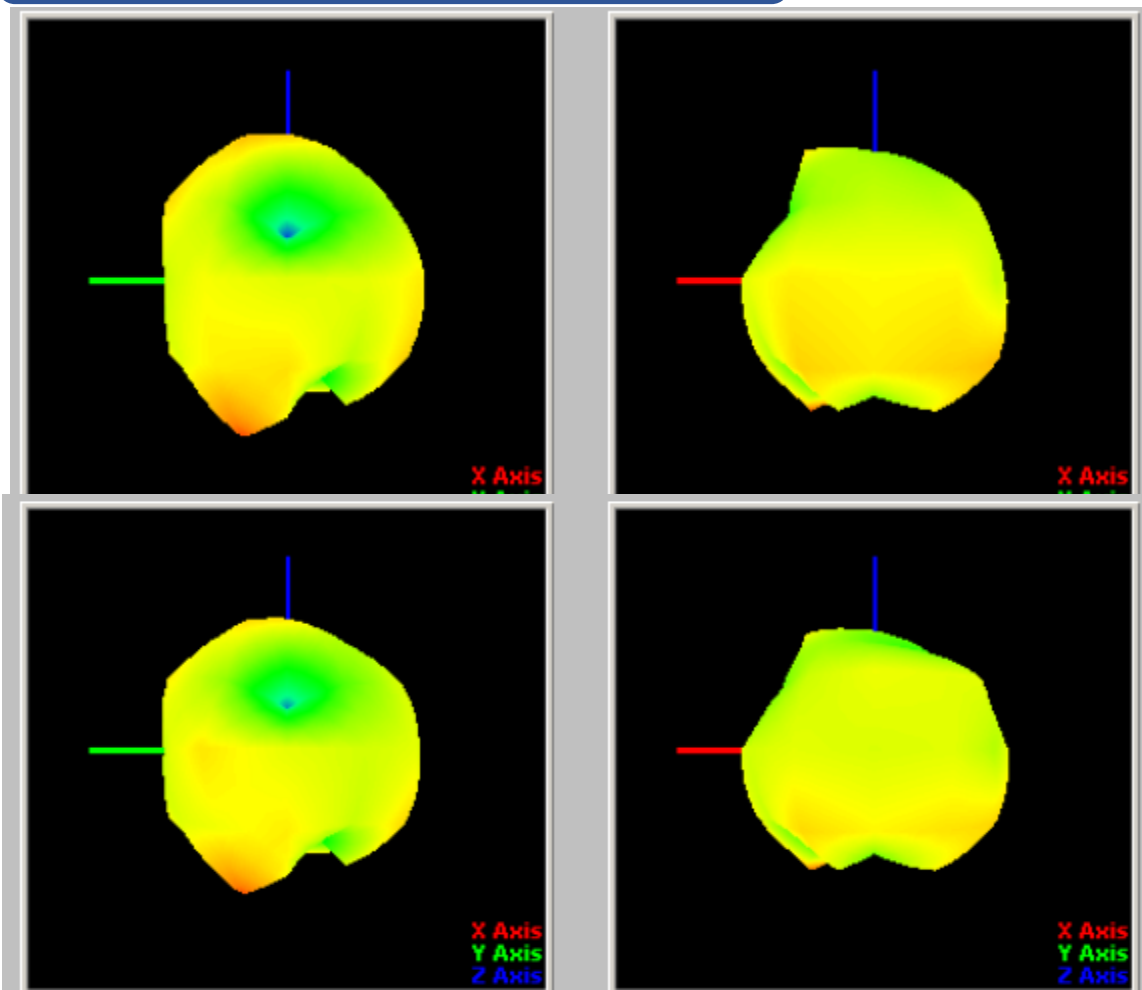


B5



B8

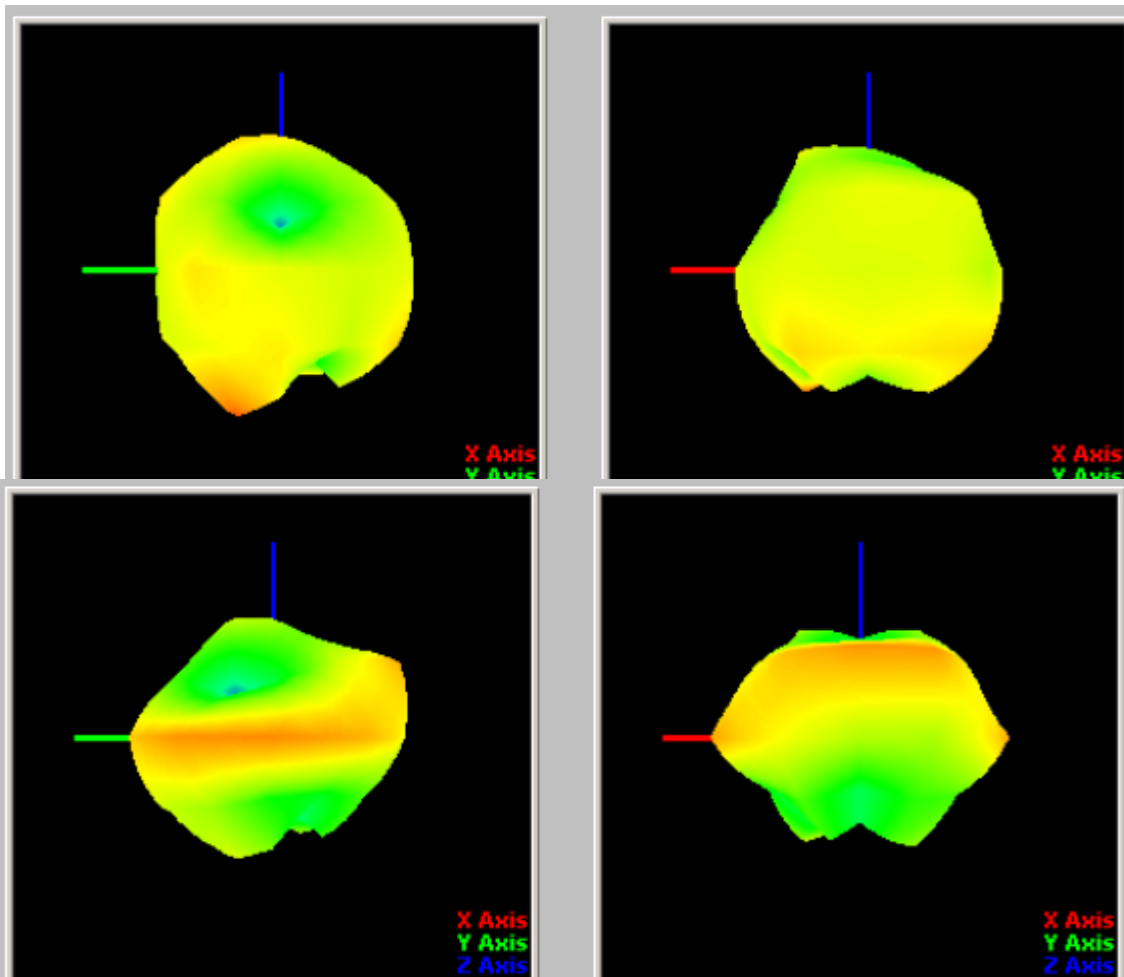
Antenna Directional Pattern



B38

B39

Antenna Directional Pattern



B40

B41



Electronic gain-4G ant

Frequency (Mhz)	Peak Gain (dbi)	Efficiency (%)
820	0.12	2.1
870	0.23	2.0
920	0.31	1.9
970	0.10	3.4
1700	0.85	15.3
1750	0.76	16.2
1800	0.69	17.0
1850	0.85	15.4
1900	0.77	16.2
1950	0.39	14.5
2000	0.58	15.0
2050	0.85	16.1
2100	0.77	16.0

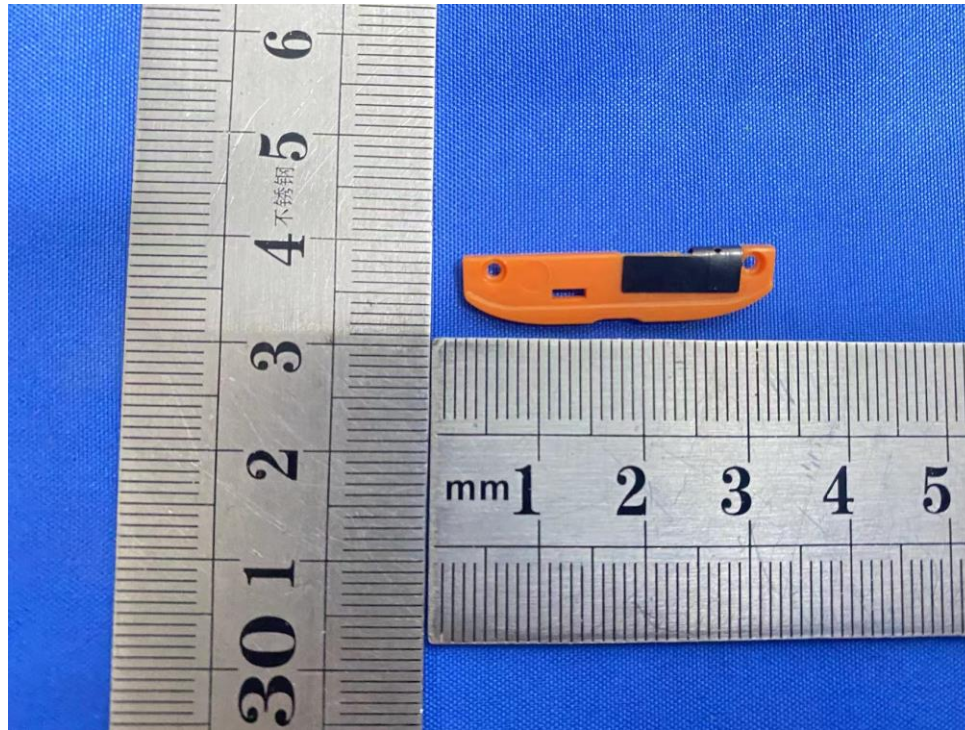
Electronic gain-4G ant

Frequency (Mhz)	Peak Gain (dbi)	Efficiency (%)
2150	0.54	15.2
2200	0.39	15.1
2250	0.85	14.2
2300	0.39	15.3
2350	0.70	14.1
2400	0.59	13.2
2450	0.48	12.5
2500	0.60	12.4
2550	0.54	12.3
2600	0.66	12.5
2650	0.70	11.6
2700	0.49	11.7

Electronic gain--WIFI/BT

Frequency (Mhz)	Peak Gain (dbi)	Efficiency (%)
2400	0.21	12.2
2410	0.50	13.5
2420	0.60	15.6
2430	0.47	15.8
2440	0.52	16.1
2450	0.55	15.5
2460	0.40	13.9
2470	0.70	12.8
2480	0.68	11.4
2490	0.49	10.9
2500	0.60	10.2

Antenna picture



Thank you!



**Shenzhen address: 4th floor, Building 2,
South Taiyue Cloud Chuanggu, Guangming
Avenue, Guangming New District, Shenzhen
City**

Tel.: 0755-23984257

Fax: 0755-86090455