

## Applications

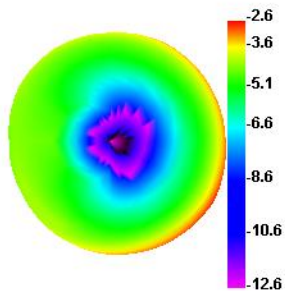
### 1. Specifications

No	Item	Specifications
1	Model Name	Ant-288
2	Frequency	WCDMA B2/B4/B5 LTD B2/B4/B5/B12/B13/B14/B66/B71
3	Gain	0.34dBi(B2) -1.22dBi(B4/B66) -2.16dBi(B5) -2.43dBi(B12) -3.3dBi(B13) -3.31dBi(B14) -2.63dBi(B71)
4	Manufacture	Quanzhou Tesunho Electronics Co., Ltd
5	Address	2#, 5F E-19# Phase 2 Xunmei, Quanzhou, Fujian, China

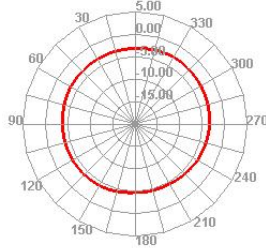
## 2. Antenna Pattern

Frequency	Eff (%)	Gain (dBi)
700	15.58	-2.63
710	16.33	-2.45
720	16.25	-2.43
730	16.37	-2.35
740	14.26	-2.87
750	12.15	-3.46
760	11.33	-3.71
770	11.41	-3.66
780	12.46	-3.3
790	12.27	-3.39
800	12.26	-3.31

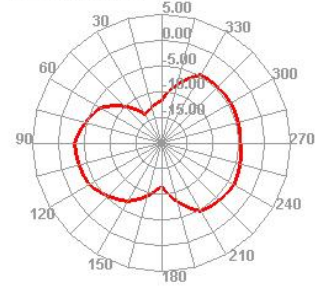
700.000MHz



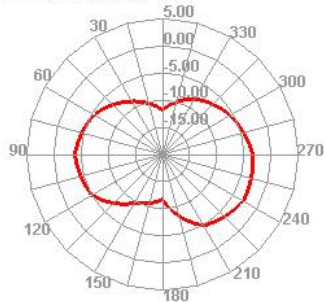
700.000MHz H



700.000MHz E1

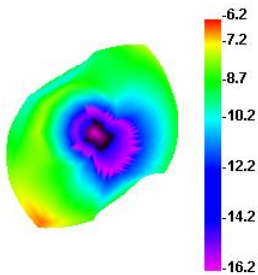


700.000MHz E2

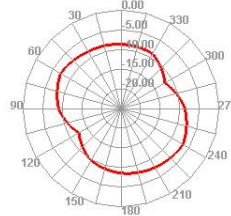


Frequency	Eff(%)	Gain (dBi)
800	18.82	-2.62
810	21.46	-2.06
820	22.37	-2.04
830	22.58	-2.16
840	23.33	-2.19
850	24.52	-2.21
860	24.9	-1.89
870	24.4	-1.93
880	27.41	-1.29

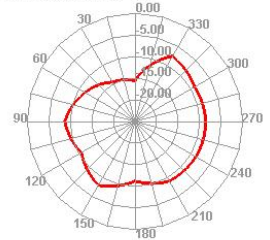
840.000MHz



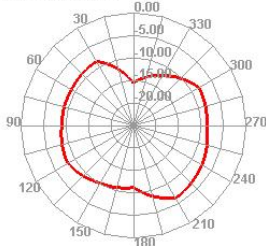
840.000MHz H



840.000MHz E1

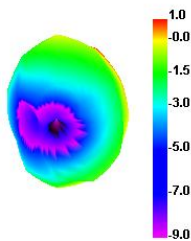


840.000MHz E2

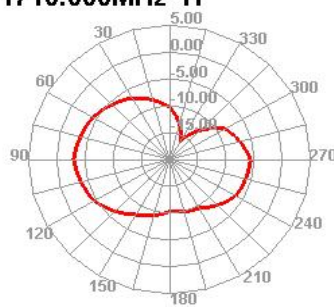


Frequency	Eff (%)	Gain (dBi)
1710	20.32	-3.07
1720	22.74	-2.33
1730	23.6	-1.93
1740	24.56	-1.73
1750	24.93	-1.59
1760	25.95	-1.22
1770	26.94	-1.27
1780	26.94	-1.42
1790	28.14	-1.35
1800	28.56	-1.33
1810	31.02	-0.98
1820	32.31	-0.66
1830	34.18	-0.30
1840	32.84	-0.39
1850	32.14	-0.35
1860	32.42	-0.21
1870	29.43	-0.69
1880	29.64	-0.46
1890	31.06	-0.13
1900	33.48	0.19
1910	33.58	0.34
1920	33.12	0.35
1930	31.48	0.04
1940	29.96	-0.40
1950	30.4	-0.56
1960	30.57	-1.06
1970	31.46	-1.47
1980	32.96	-1.29
1990	29.48	-1.56

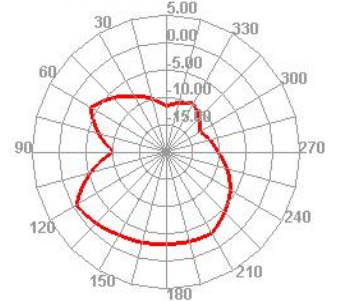
1710.000MHz



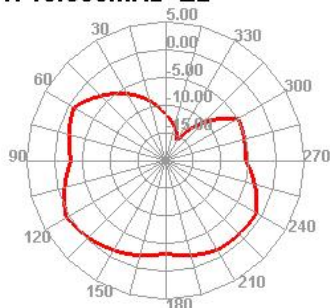
1710.000MHz H



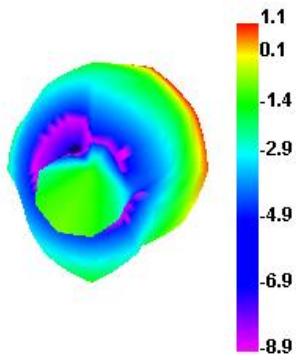
1710.000MHz E1



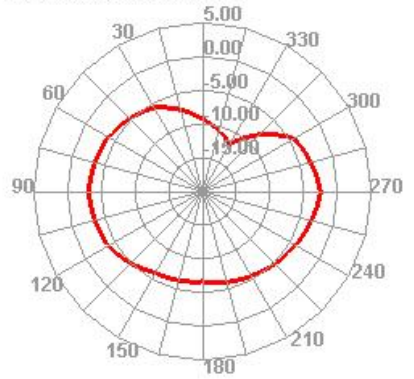
1710.000MHz E2



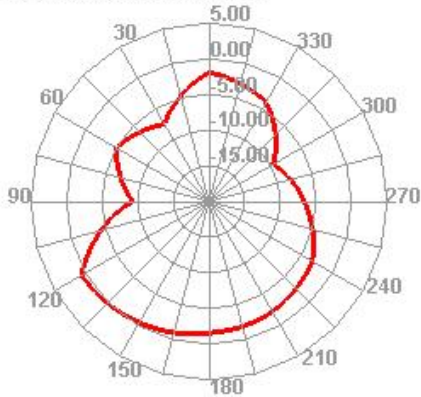
1880.000MHz



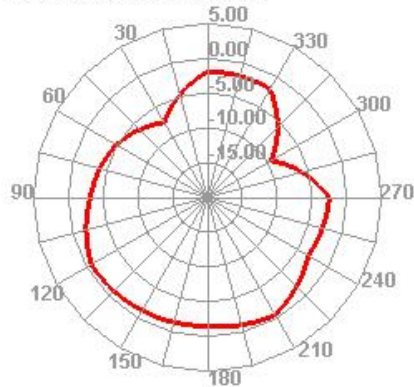
1880.000MHz H



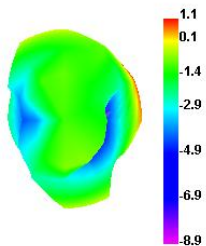
1880.000MHz E1



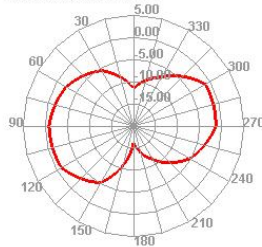
1880.000MHz E2



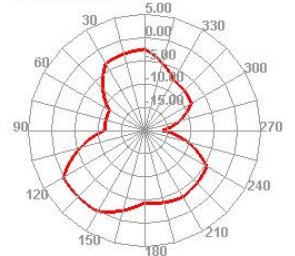
1990.000MHz



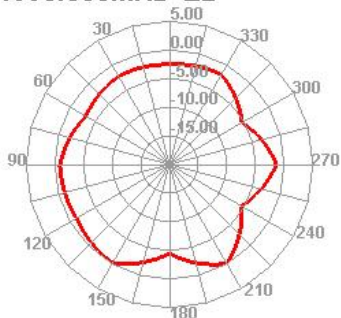
1990.000MHz H



1990.000MHz E1



1990.000MHz E2



### 3. Antenna Picture

