

System Verification Plots

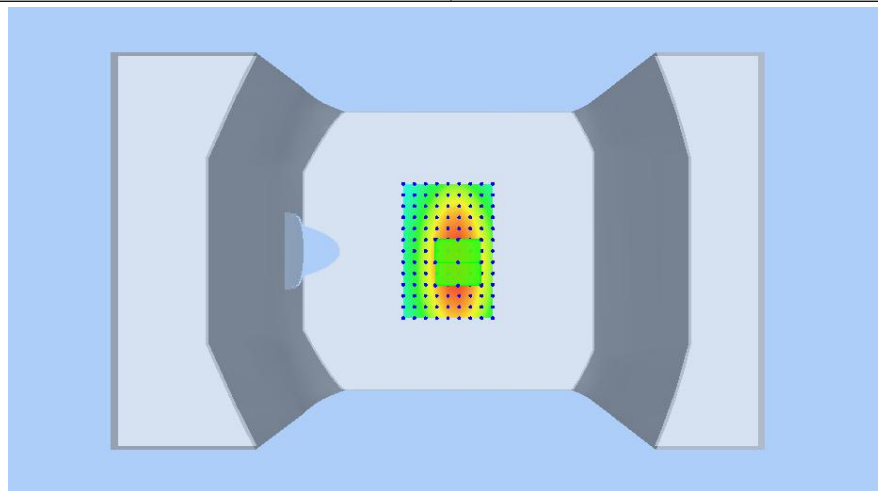
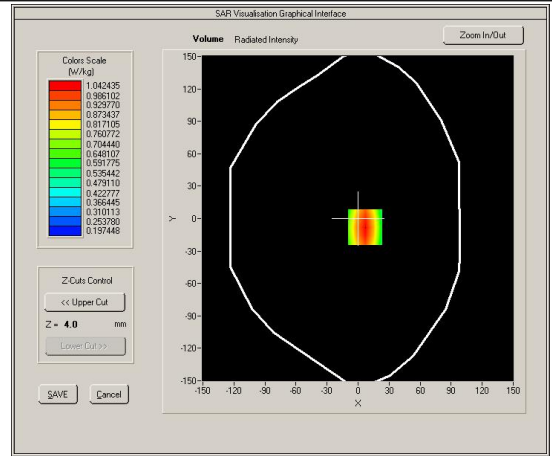
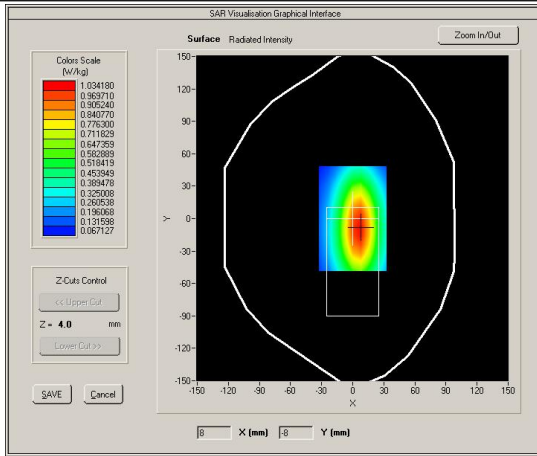
Product Description: Dipole

Model: SID835

Test Date: Nov 6, 2018

Ambient Temperature: 22.6°C; Liquid Temperature: 21.2°C

| | |
|-----------------------------------|----------------------------|
| Medium(liquid type) | HL835 |
| Frequency (MHz) | 835.000000 |
| Relative permittivity (real part) | 42.32 |
| Conductivity (S/m) | 0.92 |
| Input power | 100mW |
| E-Field Probe | SN 27/15 EPGO262 |
| Crest factor | 1.0 |
| Conversion Factor | 1.74 |
| Sensor-surface | 4mm |
| Area Scan | dx=8mm dy=8mm |
| Zoom Scan | 5x5x7,dx=8mm dy=8mm dz=5mm |
| Variation (%) | 0.470000 |
| SAR 10g (W/Kg) | 0.643158 |
| SAR 1g (W/Kg) | 0.962215 |



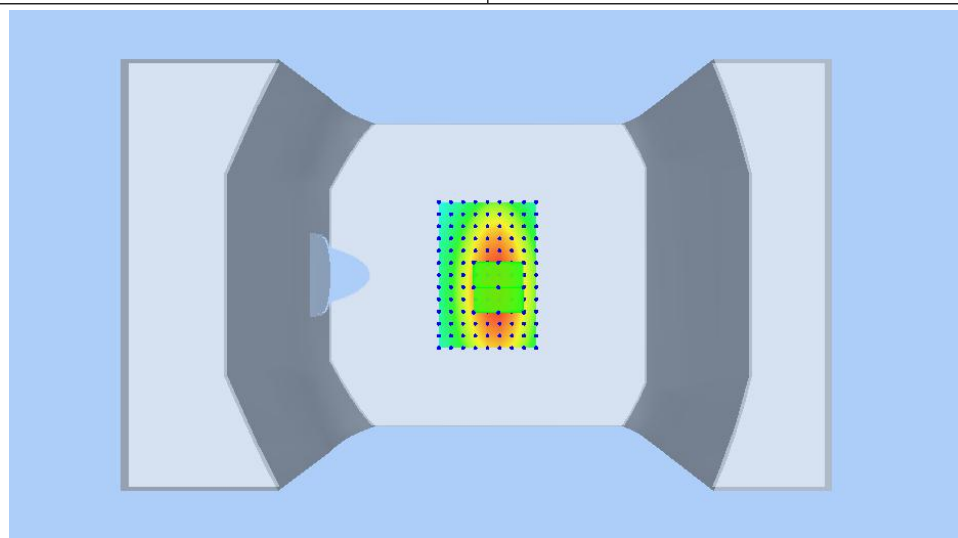
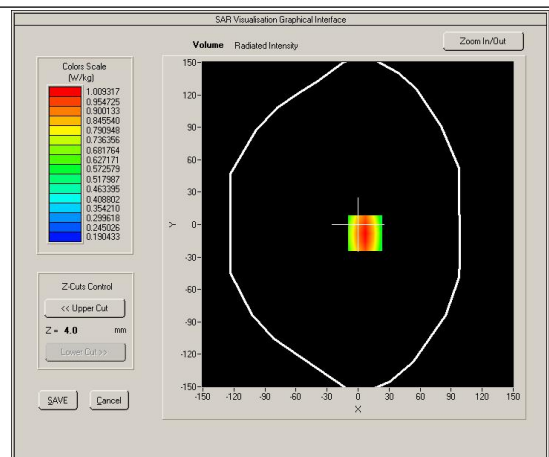
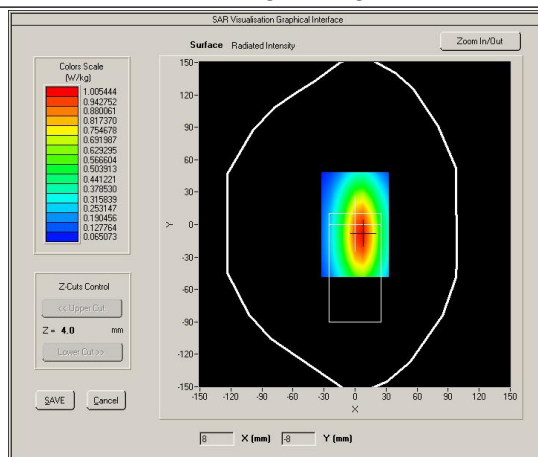
Product Description: Dipole

Model: SID835

Test Date: Nov 6, 2018

Ambient Temperature: 22.6°C; Liquid Temperature: 21.2°C

| | |
|-----------------------------------|----------------------------|
| Medium(liquid type) | BL835 |
| Frequency (MHz) | 835.000000 |
| Relative permittivity (real part) | 56.43 |
| Conductivity (S/m) | 0.99 |
| Input power | 100mW |
| E-Field Probe | SN 27/15 EPGO262 |
| Crest factor | 1.0 |
| Conversion Factor | 1.81 |
| Sensor-surface | 4mm |
| Area Scan | dx=8mm dy=8mm |
| Zoom Scan | 5x5x7,dx=8mm dy=8mm dz=5mm |
| Variation (%) | -0.120000 |
| SAR 10g (W/Kg) | 0.637155 |
| SAR 1g (W/Kg) | 0.957034 |



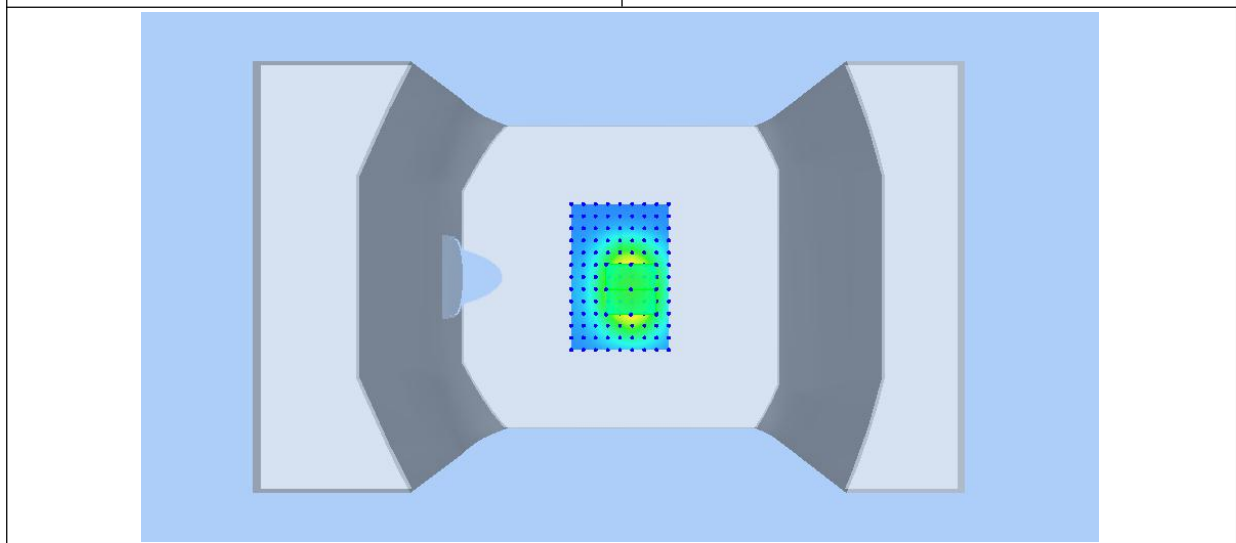
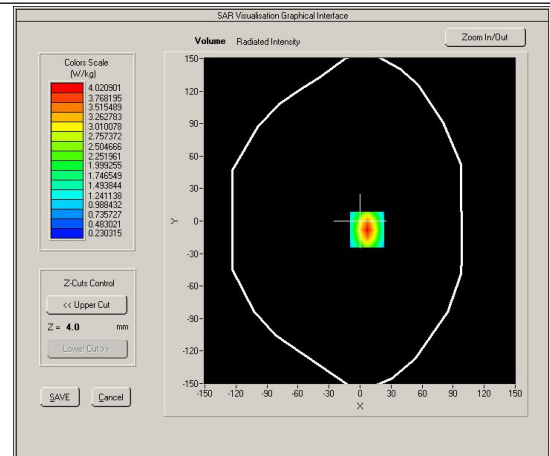
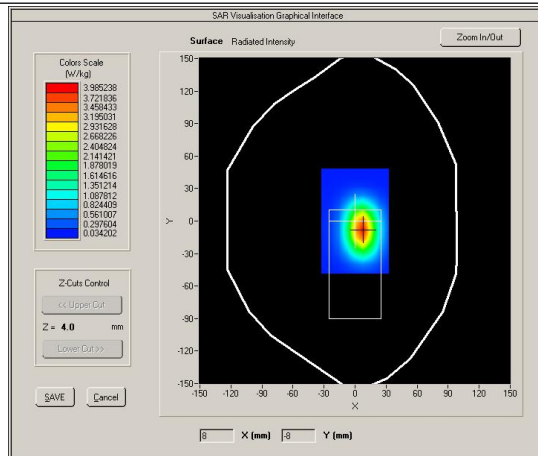
Product Description: Dipole

Model: SID1900

Test Date: Nov 8, 2018

Ambient Temperature: 22.7°C; Liquid Temperature: 21.4°C

| | |
|-----------------------------------|----------------------------|
| Medium(liquid type) | HL1900 |
| Frequency (MHz) | 1900.000 |
| Relative permittivity (real part) | 40.88 |
| Conductivity (S/m) | 1.43 |
| Input power | 100mW |
| E-Field Probe | SN 27/15 EPGO262 |
| Crest factor | 1.0 |
| Conversion Factor | 2.01 |
| Sensor-Surface | 4mm |
| Area Scan | dx=8mm dy=8mm |
| Zoom Scan | 5x5x7,dx=8mm dy=8mm dz=5mm |
| Variation (%) | -1.720000 |
| SAR 10g (W/Kg) | 1.967227 |
| SAR 1g (W/Kg) | 3.857275 |



Product Description: Dipole

Model: SID1900

Test Date: Nov 8, 2018

Ambient Temperature: 22.7°C; Liquid Temperature: 21.4°C

| | |
|-----------------------------------|----------------------------|
| Medium(liquid type) | BL1900 |
| Frequency (MHz) | 1900.000 |
| Relative permittivity (real part) | 55.15 |
| Conductivity (S/m) | 1.51 |
| Input power | 100mW |
| E-Field Probe | SN 27/15 EPGO262 |
| Crest factor | 1.0 |
| Conversion Factor | 2.05 |
| Sensor-Surface | 4mm |
| Area Scan | dx=8mm dy=8mm |
| Zoom Scan | 5x5x7,dx=8mm dy=8mm dz=5mm |
| Variation (%) | -0.640000 |
| SAR 10g (W/Kg) | 2.136254 |
| SAR 1g (W/Kg) | 4.148166 |

