

EUT Internal Photo

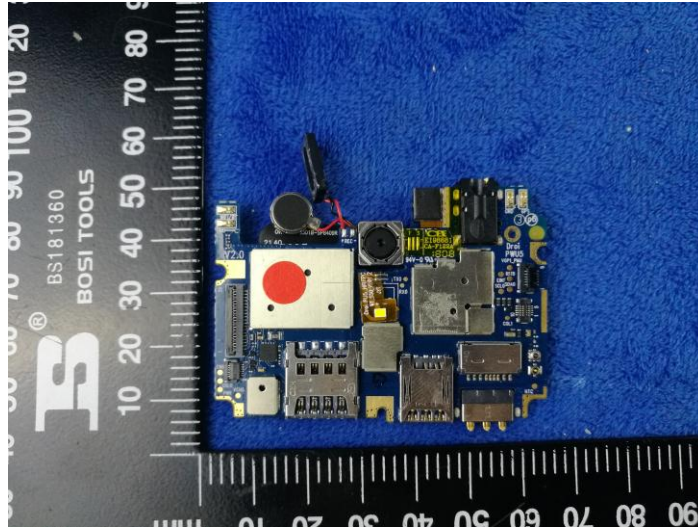
Cover off view 1



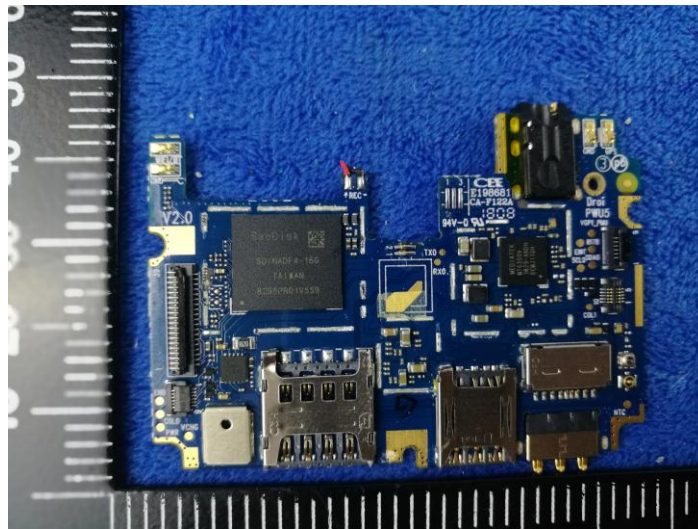
Cover off view 2



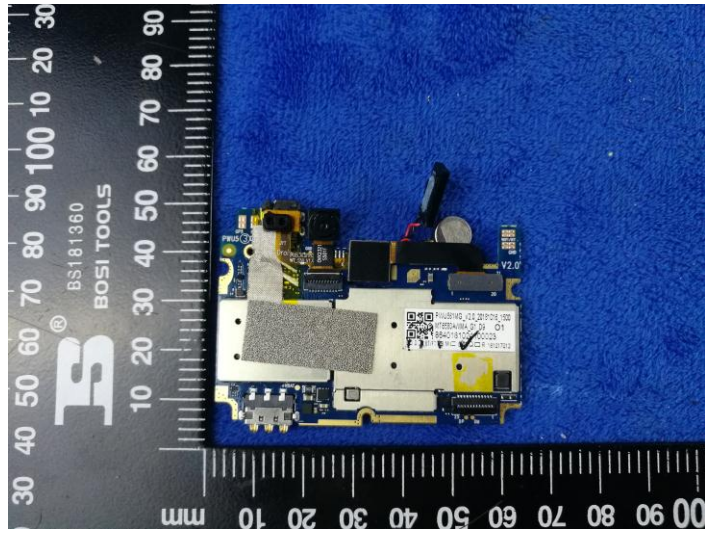
PCB with shileding – Front View



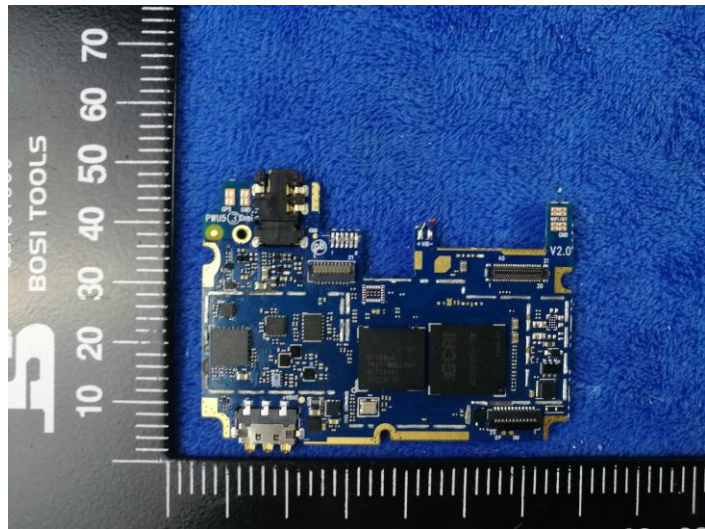
PCB without shileding – Front View



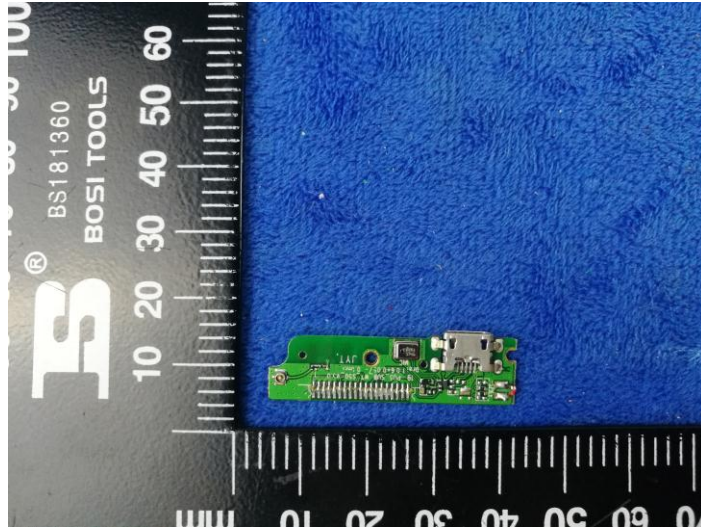
PCB with shileding – Rear View



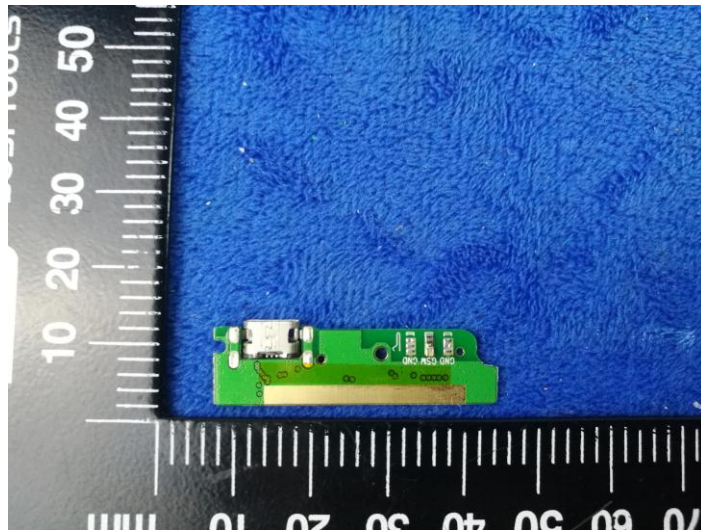
PCB PCB with shileding – Rear View



USB Board – Front View



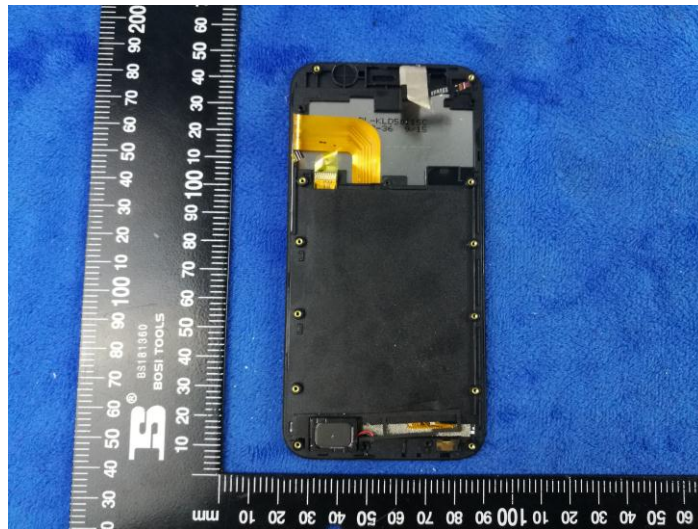
USB Board – Rear View



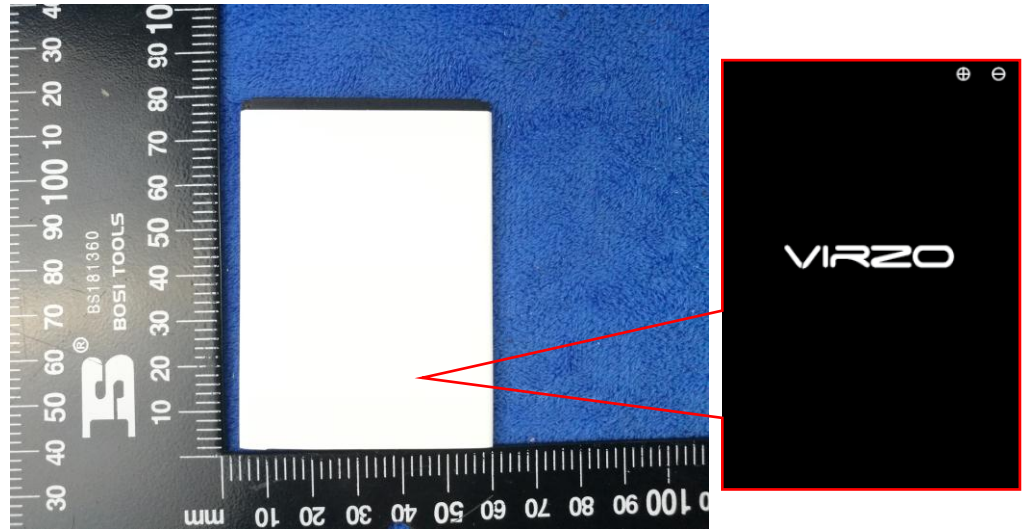
LCD – Front View



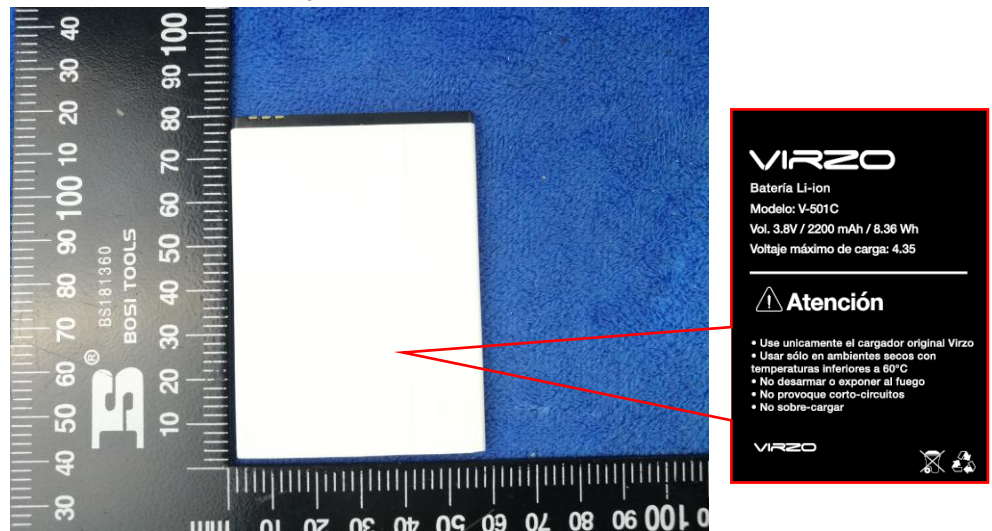
LCD – Rear View



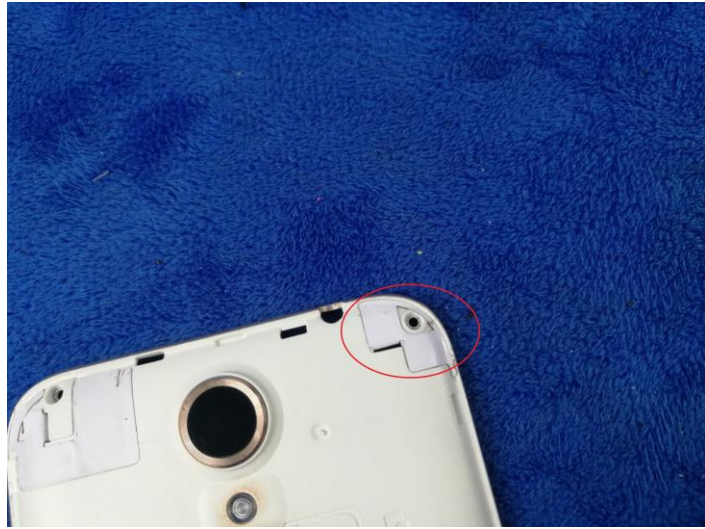
Battery – Front View



Battery – Rear View



GSM/PCS/UMTS Antenna



BT/WIFI/BLE/GPS Antenna

