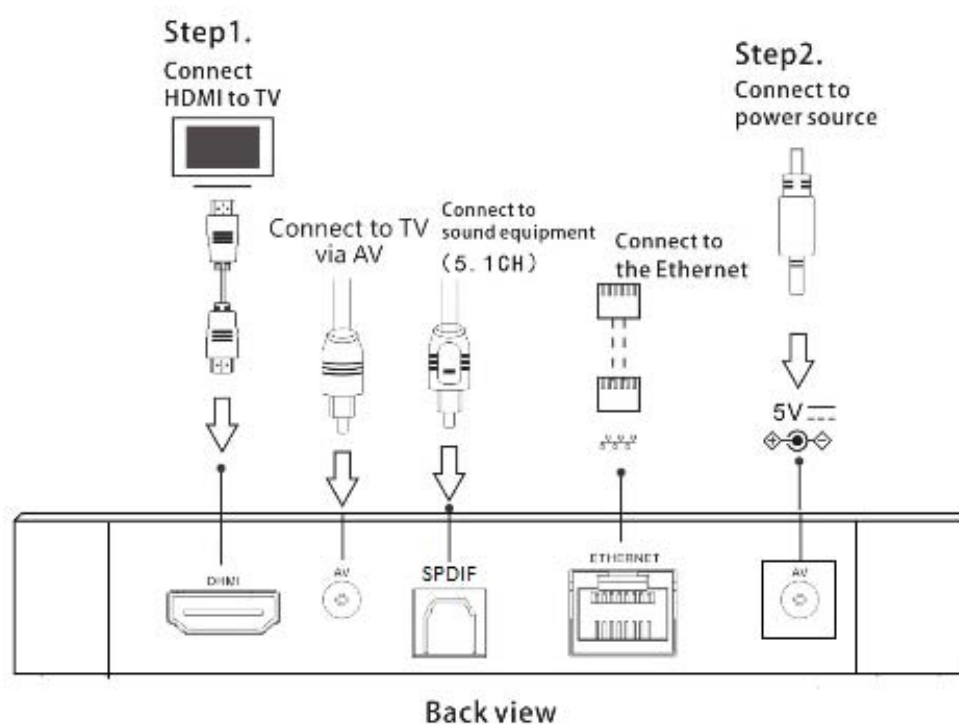



TV BOX

Sunday

User Instruction

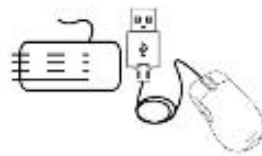
Basic Operation



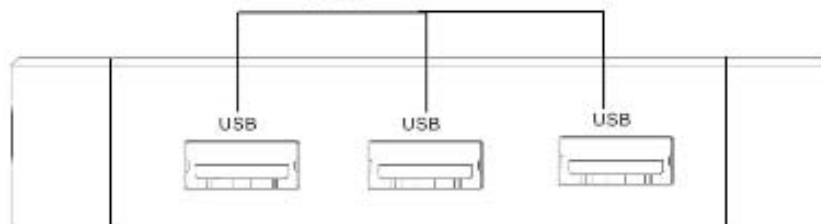
 Failure to use the included Power Adapter may violate regulatory compliance requirements and may expose the user to safety hazards.

Basic Operation

Plug in the USB
for the Mouse/Keyboard



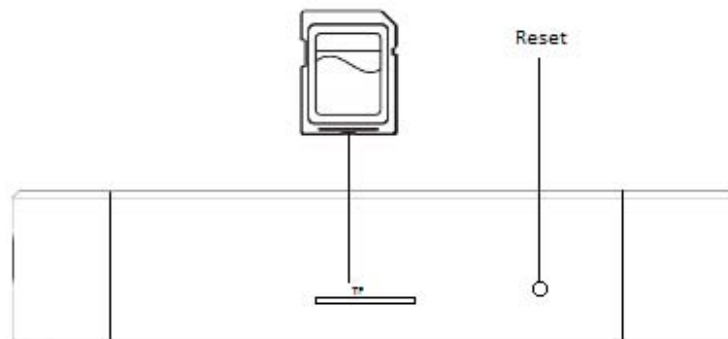
USB



Right side view

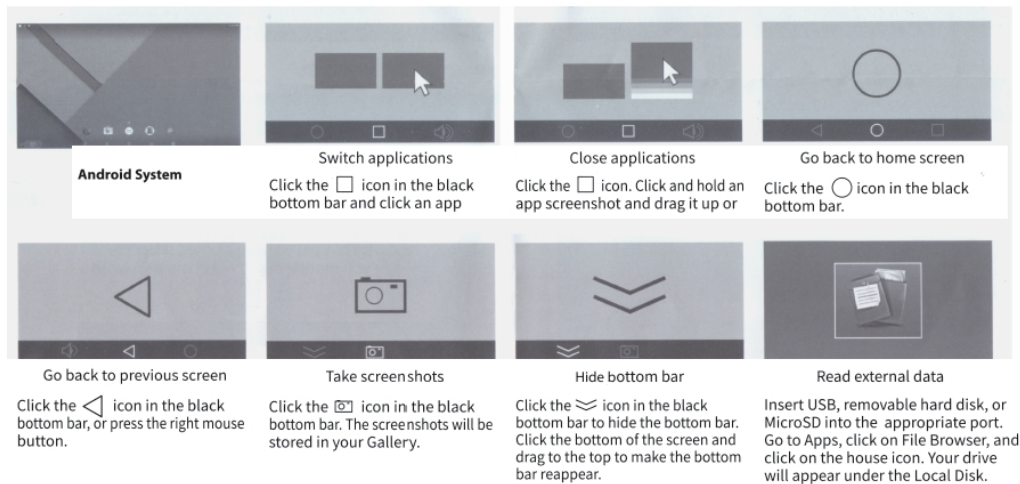
Basic Operation

Plug in the TF card Slot
for the TF card

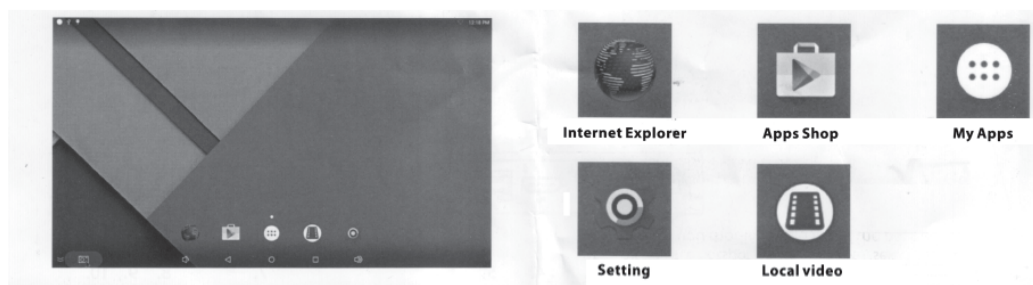


Left Side View

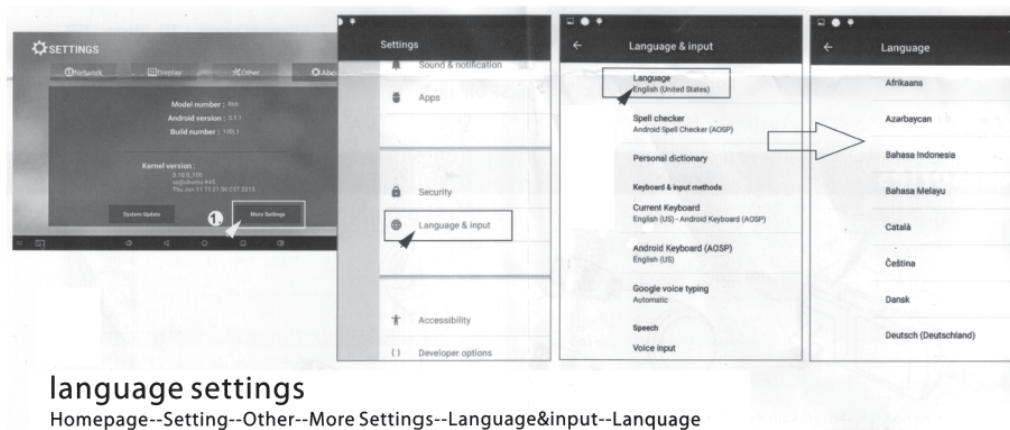
Basic Operations



Basic Operations



Language Settings



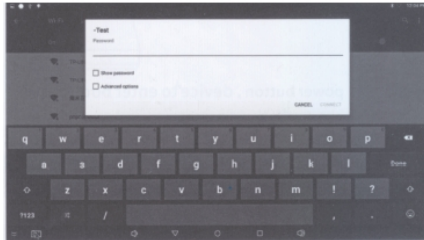
Connecting to Internet

Wi-Fi

When device starts, you will be prompted to connect to the Internet. To connect to the Internet via Wi-Fi:

1. Select Wi-Fi.
2. Select your network.
3. Input network password.

After you have finished setting up your device, you can change how you connect to the internet by clicking on Settings on the homepage and going to Network and do steps 1-3.

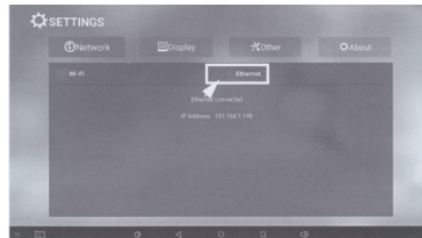


Ethernet

To connect to the Internet via Ethernet:

1. Select Ethernet.
2. Plug in the Ethernet cable to the device.
3. The device will automatically detect it.

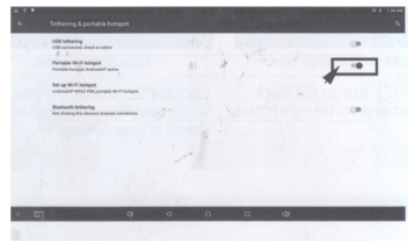
After you have finished setting up your device, you can change how you connect to the internet by clicking on Settings on the homepage and going to Network and do steps 1-3.



Set up WLAN hotspot

To set up a WLAN hotspot with your device:

1. From the homepage, click on Settings, then on Other, then on More settings, then Portable Hotspot, and select "Portable Wi-Fi Hotspot."
2. Select "Set up Wi-Fi hotspot" and create Network SSID, Security, and Password parameters.
3. To access device hotspot on other devices, select the Network SSID you modified and enter the password.



FCC Statement

This device complies with Part 15 of the FCC rules. Operation is subject to the following two conditions: 1) this device may not cause harmful interference, and 2) this device must accept any interference received, including interference that may cause undesired operation.

Note: This equipment has been tested and found to comply with the limits for a Class B digital device, pursuant to part 15 of the FCC Rules. These limits are designed to provide reasonable protection against harmful interference in a residential installation. This equipment generates uses and can radiate radio frequency energy and, if not installed and used in accordance with the instructions, may cause harmful interference to radio communications. However, there is no guarantee that interference will not occur in particular installation. If this equipment does cause harmful interference to radio or television reception, which can be determined by turning the equipment off and on, the user is encouraged to try to correct the interference by one or more of the following measures:

- Reorient or relocate the receiving antenna.
- Increase the separation between the equipment and receiver.
- Connect the equipment into an outlet on a circuit different from that to which the receiver is connected.
- Consult the dealer or an experienced radio/TV technician for help.

Changes or modifications not expressly approved by the party responsible for compliance could void the user's authority to operate the equipment.

FCC Radiation Exposure Statement

This device complies with FCC RF radiation exposure limits set forth for an uncontrolled environment. This transmitter must not be co-located or operating in conjunction with any other antenna or transmitter.

This device must operate with a minimum distance of 20 cm between the radiator and user body.

IC Note:

This device complies with Industry Canada's licence-exempt RSSs. Operation is subject to the following two conditions:

- (1) This device may not cause interference; and
- (2) This device must accept any interference, including interference that may cause undesired operation of the device.

Cet appareil est conforme aux CNR exemptes de licence d'Industrie Canada . Son fonctionnement est soumis aux deux conditions suivantes :

- (1) Ce dispositif ne peut causer d'interférences ; et
- (2) Ce dispositif doit accepter toute interférence , y compris les interférences qui peuvent causer un mauvais fonctionnement de l'appareil.