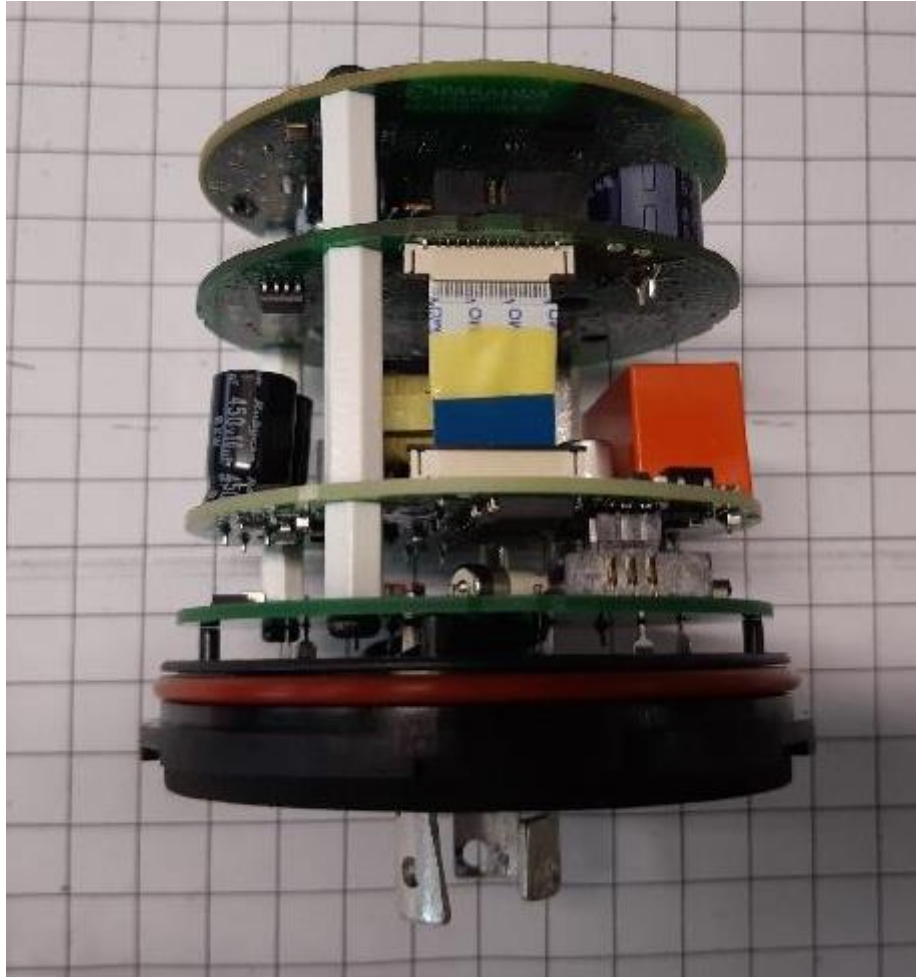


NDLM007US-1

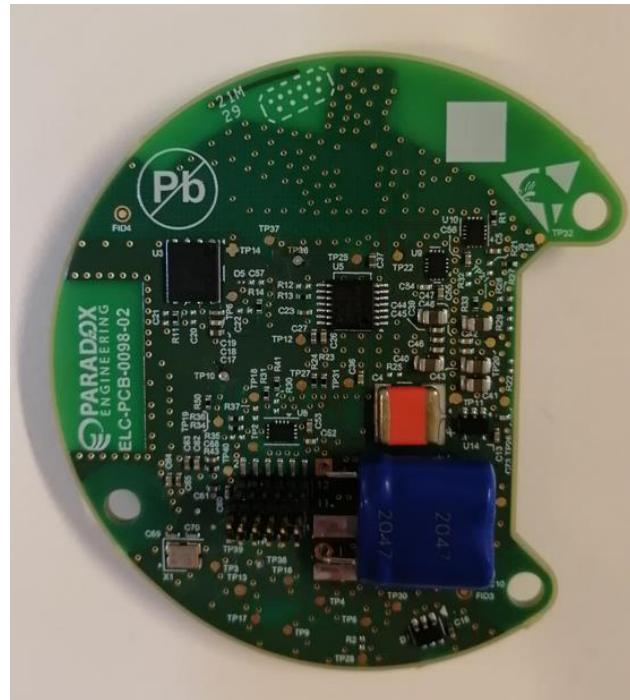
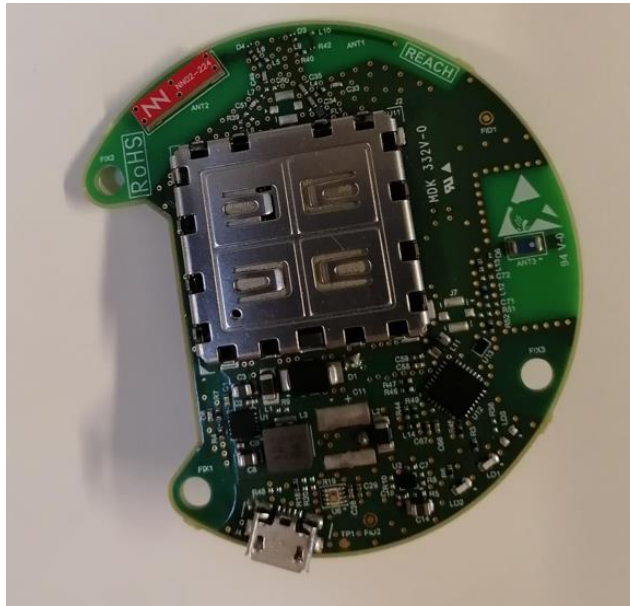
NDLM007US-2

NEMA Hybrid (NEMA) – FCC ID: 2AKPQNDLM007US

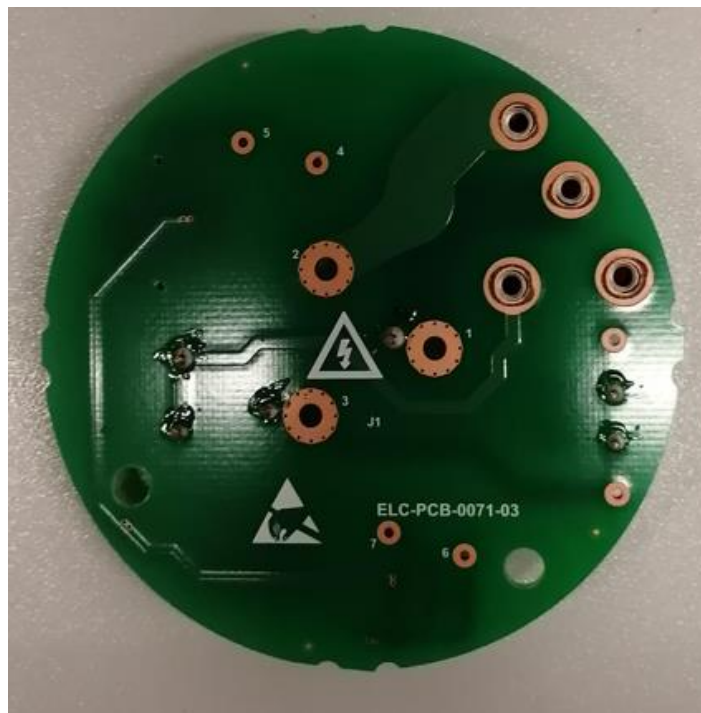
Internal pictures



3GPP board



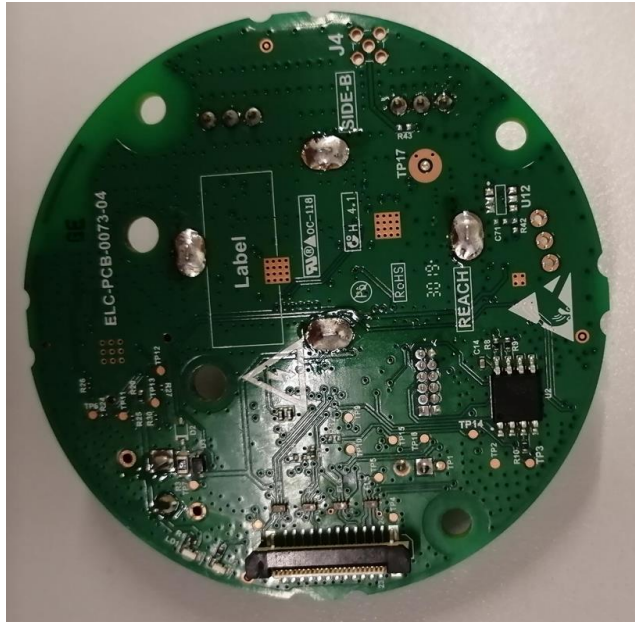
Connector board



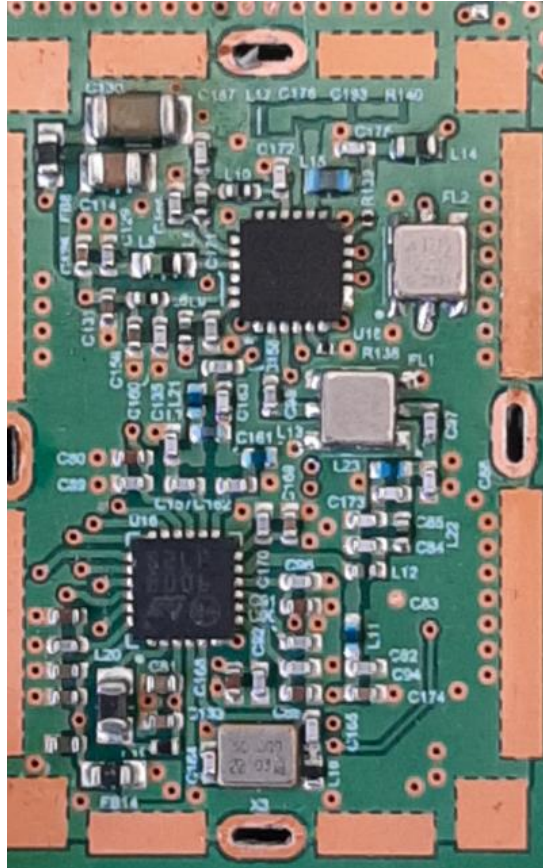
Power board



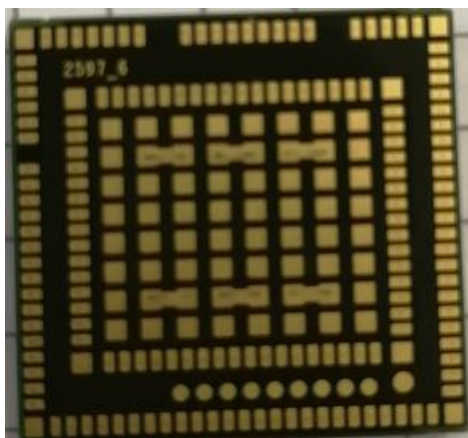
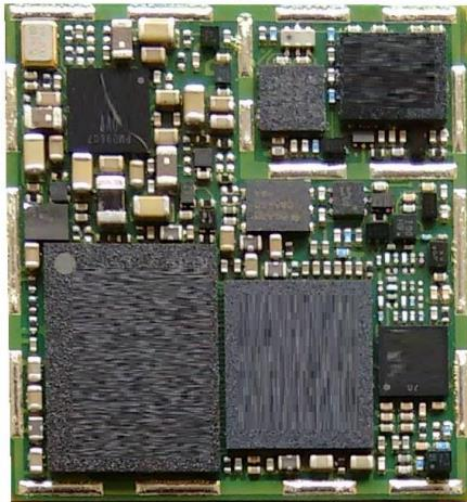
Signal board



Narrowband 915 MHz, Paradox Engineering



LTE Module Cat-M1, Sierra Wireless, WP7702, FCC ID: N7NWP77B for NDLM007US-1



LTE Module Cat-1, Sierra Wireless, WP77611-1, FCC ID: N7NWP76B for NDLM007US-2

