

# WAVE RAZOR

HIGH PERFORMANCE UFO FOR RC ENTHUSIASTS  
FLIGHT MANUAL



Battery requirements for transmitter:  
4 X 1.5V "AAA" size batteries (not included)  
DRONE is equipped with a Li-Poly rechargeable battery,  
please also pay attention to the following safety precautions:

- Don't use or leave the battery near a heat source such as fire or heater.
- Don't strike or throw the battery against any hard surface.
- Don't immerse the battery in water, and keep the battery in a cool dry place.
- When recharging, only use the battery charger intended for that purpose.
- Don't over-charge the battery.
- Don't directly solder the battery or pierce it with a nail or other sharp object.
- Don't transport or store the battery together with metal objects.
- Never charge the battery for more than one hour
- Never leave charging battery unattended.

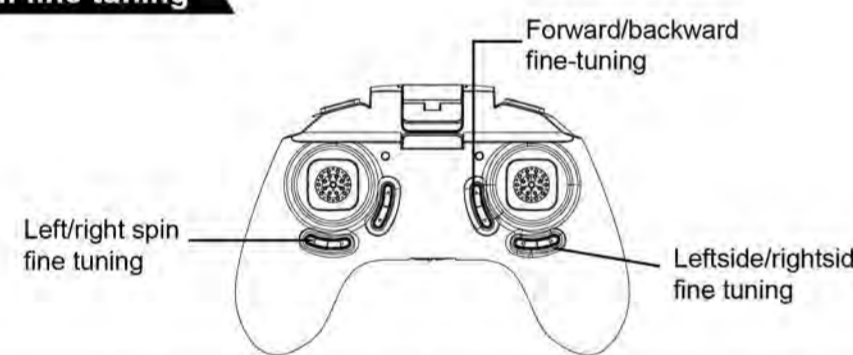
**Note:**  
\* Always dispose of old batteries responsibly



### Safety Precautions

- Please read through the manual's before using.
- Please store small parts in a place well out of the reach of small children.
- Never leave the DRONE unattended during battery charging.
- Never throw any batteries in a fire.
- Never fly the DRONE near other people.
- Keep all body parts away from the copter while the rotor blades are spinning.
- Never try to repair circuitry, there are no serviceable electronic inside the DRONE or transmitter.

### Trim fine tuning



Backward Trim	← Forward	← →	Backward Trimmer
Forward Trim	Backward →	← →	Forward Trimmer
Leftside Trim	← →	← →	LeftSide trimmer
Rightside Trim	← →	← →	RightSide trimmer
Left spin Trim	← →	← →	Left Spin trimmer
Right spin Trim	← →	← →	Right Spin trimmer

### Flying Precautions

1. Keep small parts out of the reach of children, to avoid choking hazard.
2. The DRONE is powerful, when taking off, move the throttle stick forward gradually, to avoid it's rising too fast.
3. After flight, turn off the DRONE first, then turn off the controller.
4. Do not put the battery in high temperature or near heat source
5. Note, to avoid injury or damage, the DRONE should not be flown nearer than 2 meters / 7 feet from people or other obstacles.
6. Children should fly the DRONE under adult supervision only. Always keep the DRONE in clear sight while flying.
7. Always turn off the power of the controller and DRONE when not in use.

### Battery Protection

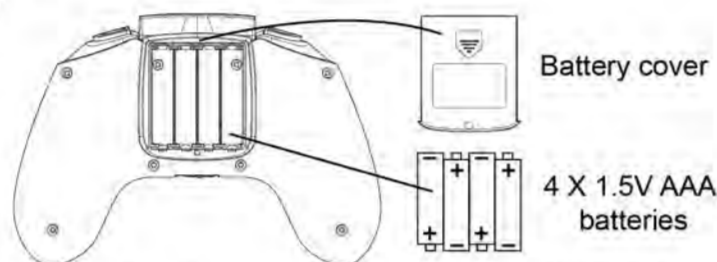
1. The DRONE is equipped with low-voltage protection: When its battery is low, the programmed control system will stop electrical supply to DRONE's rotors. The battery then needs charging to allow the DRONE to fly again.

### Maintenance

1. Clean the DRONE with clean, dry soft cloth only.
2. To avoid irreparable damage, keep the DRONE dry and away from water. Do not fly in rainy conditions.
3. Check the DRONE and accessories for damage. If damage is found, do not use the DRONE until it is repaired.

### Battery Installation & Charging

#### Controller

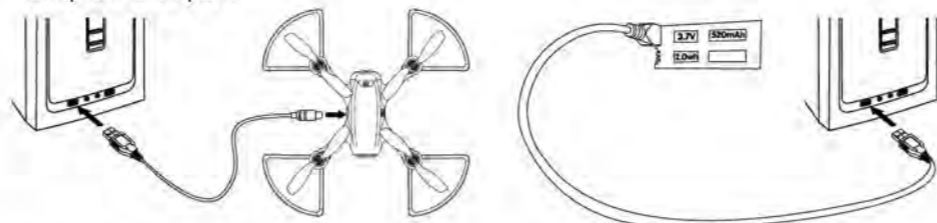


1. To install batteries: Open the cover of battery case, insert 4 X 1.5V AAA batteries, according to indicated polarity (batteries not included).

**Battery installation should be done under adult supervision only!**  
**Do not mix old and new batteries.**  
**Do not mix different types of batteries.**

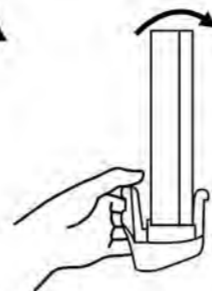
### Charging

1. Insert one side of the USB connector into the drone/battery, and the other side into any computer USB port.

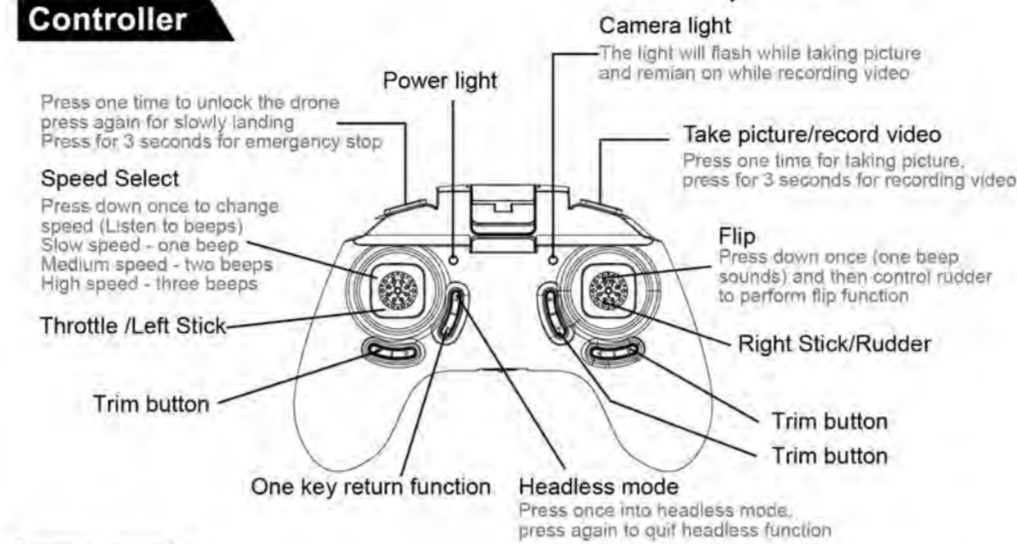


### How to get the battery out from the frame?

One hand press the frame as picture shows, and another hand press the battery to get it out.

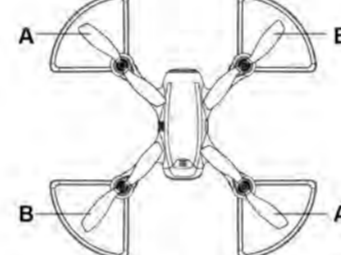


### Controller

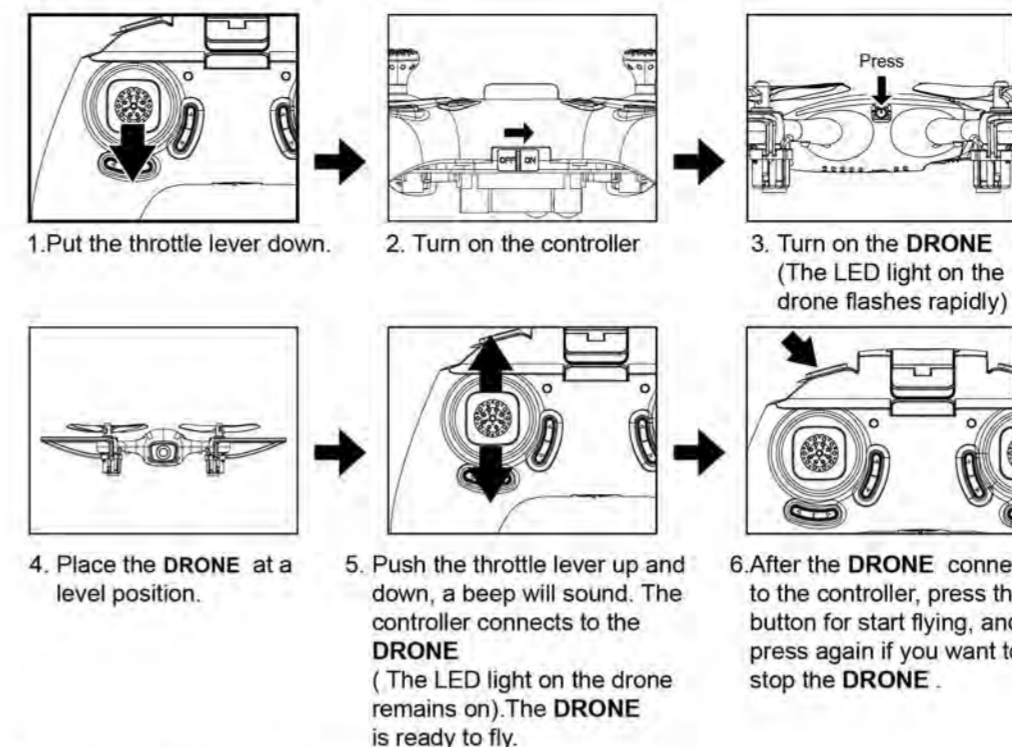


### Drone

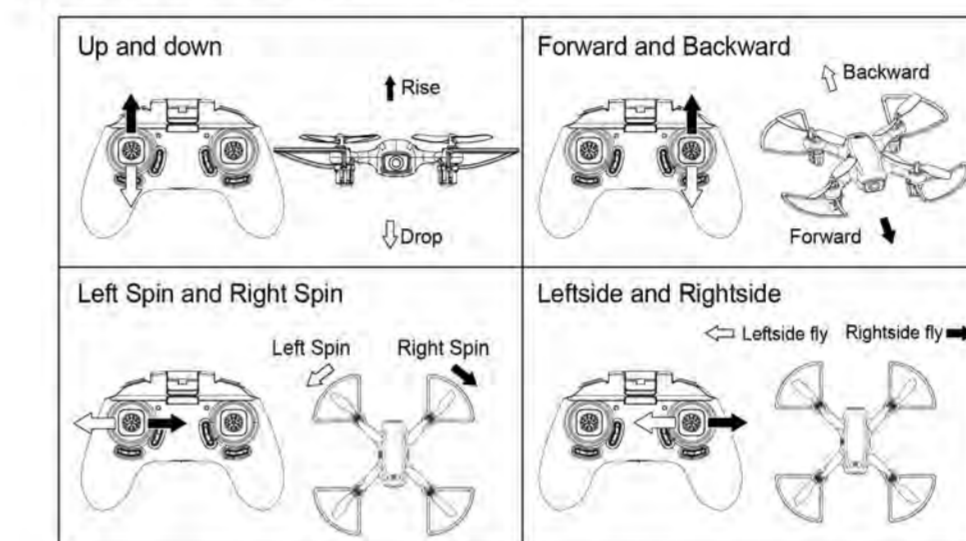
Replacing Damaged blades:  
Your set will come with 4 replacement rotors, two (A) type and two (B) type. You will see the "A" and "B" word on the canopy, put the rotor on the motor accordingly.



### Operating steps



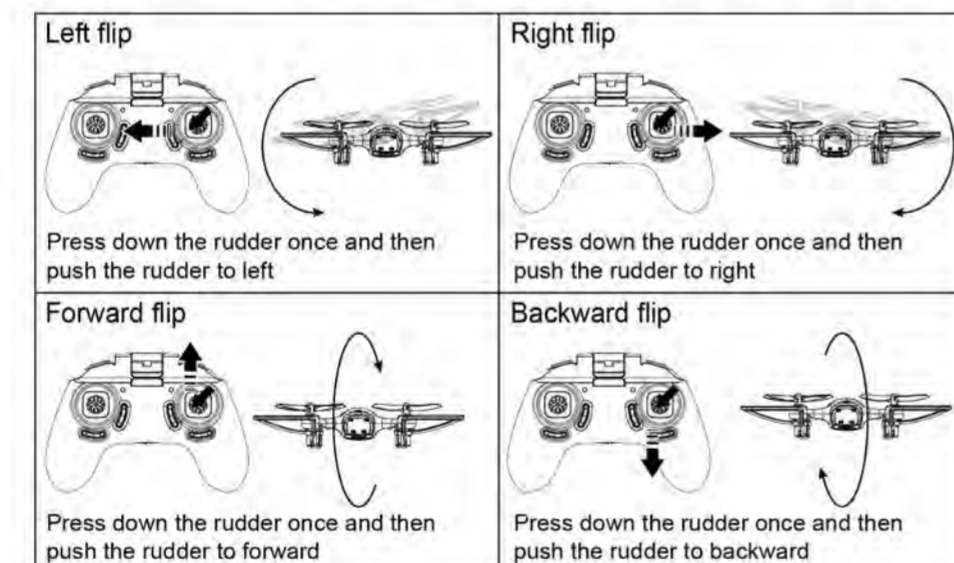
### Operation and Control



Note: When the drone is flying towards you, the control directions are reversed.

### Radical Flips & Rolls

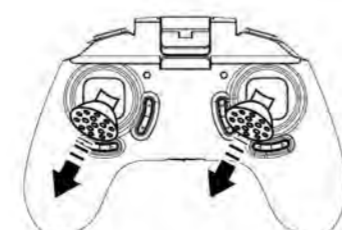
You can perform flips with your DRONE in any of the speed settings. Press down the rudder once(one beep sounds) then push the rudder in related direction.



Before you perform a Flip Trick, always make sure you have enough space both above and below your DRONE.

### Auto trim function

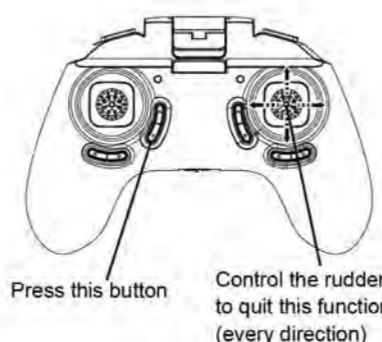
Press the throttle and rudder down to 45 degree circle (as above) for 10 second, you will see the light on the PC board of drone flashing rapidly, then pls let go the throttle and rudder, the light on the PC board remains on, the auto trim finishes.



### One key return function

When the drone is taking off, the LED light on the drone stop flashing, at the moment, the drone sets its front side to be the front direction for one key return flying. If you want to reset the front direction, then you need to turn off the rc drone and reset it again.

Press the button as picture shows for one key back home function, and then control right sticker (Rudder) to every direction to quit this function.

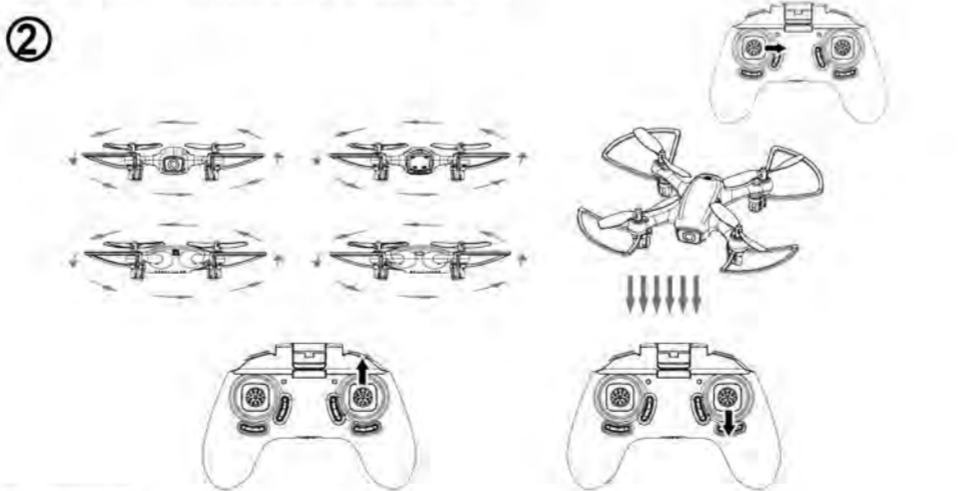


### Headless function

**HOW TO GET INTO/QUIT HEADLESS FUNCTION FLYING?**  
Press the button on controller(as picture shows) you will hear beep sounds then you get into compass mode flying. To quit from compass mode, just press it again and you will hear beep sound disappears.

**HOW TO RECOGNIZE THE " FORWARD SIDE" UNDER HEADLESS FUNCTION?**  
When the drone is taking off, the LED light on the drone stop flashing, at the moment, the drone sets its front side to be the front direction for headless mode flying.

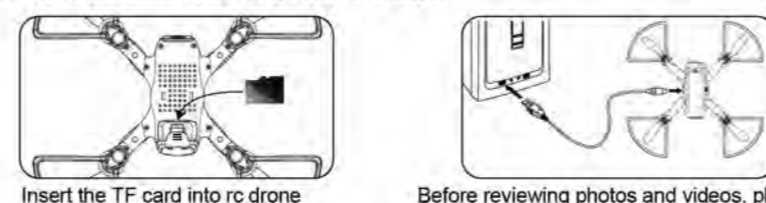
If you want to reset the front direction, then you need to turn off the rc drone and reset it again.



### Camera:

#### Normal camera:

VGA camera(Resolution: 640\*480) \ 720P camera (Resolution: 1280\*720)  
**HOW TO REVIEWING PHOTOS/VIDEOS**



Before reviewing photos and videos, please insert one end of DATA CABLE onto port of camera correctly, the other end onto computer, open "my computer" and you will find related file from which you can view photos and videos you took.

### FCC compliance statement

This device complies with Part 15 of the FCC Rules. Operation is subject to the following two conditions: (1) this device may not cause harmful interference, and (2) this device must accept any interference received, including interference that may cause undesired operation.

changes or modifications not expressly approved by the party responsible for compliance could void the user's authority to operate the equipment.

This equipment has been tested and found to comply with the limits for a Class B digital device, pursuant to Part 15 of the FCC Rules. These limits are designed to provide reasonable protection against harmful interference in a residential installation. This equipment generates, uses and can radiate radio frequency energy and, if not installed and used in accordance with the instructions, may cause harmful interference to radio communications. However, there is no guarantee that interference will not occur in a particular installation.

If this equipment does cause harmful interference to radio or television reception, which can be determined by turning the equipment off and on, the user is encouraged to try to correct the interference by one or more of the following measures:

- Reorient or relocate the receiving antenna.
- Increase the separation between the equipment and receiver.
- Connect the equipment into an outlet on a circuit different from that to which the receiver is connected.
- Consult the dealer or an experienced radio/TV technician for help.

### FCC Radiation Exposure statement

This equipment complies with FCC radiation exposure limits set forth for an uncontrolled environment. This equipment should be installed and operated with minimum distance 20cm between the radiator and your body. This transmitter must not be co-located or operating in conjunction with any other antenna or transmitter.

### Wifi camera:

#### 0.3m pixel WIFI camera (Vga/640\*480)

##### 1.SOFTWARE DOWNLOAD AND INSTALLATION



##### 2.USING INSTRUCTION

- 1). Connect the model to the power, the indicator on camera turns red.
- 2). Enter the "setting" menu of your mobile device and turn on WIFI.
- 3). Find a network WIFI called "HELICUTE FPV", click connection until "connected".
- 4). Open the "HELICUTE FPV" software, click the "play" icon into the control interface. And you will see the real time video.



#### 1.0m pixel WIFI camera (720P/1280\*720)

##### 1.SOFTWARE DOWNLOAD AND INSTALLATION



##### 2.USING INSTRUCTION

- 1). Connect the model to the power.
- 2). Enter the "setting" menu of your mobile device and turn on WIFI.
- 3). Find a network WIFI called "HELICUTE 720P FPV", click connection until "connected".
- 4). Open the "HELICUTE 720P FPV" software, click the "play" icon into the control interface. And you will see the real time video.
- 5). To save video, pls insert the TF card (optional) into wifi camera.

