



**ACCURATE TECHNOLOGY CO., LTD.**

F1,Bldg,A,Changyuan New Material Port Keyuan Rd,  
Science & Industry Park,Nanshan Shenzhen,P.R.China

Site: 2# Chamber

Tel:+86-0755-26503290

Fax:+86-0755-26503396

Job No.: FRANK #1035

Standard: FCC PK

Test item: Radiation Test

Temp.( C)/Hum.(%) 23 C / 48 %

EUT: Interactive Flat Panel

Mode: USB IN

Model: ETX-7500UHD

Manufacturer: XIAMEN PRIMA

Polarization: Vertical

Power Source: AC 120V/60Hz

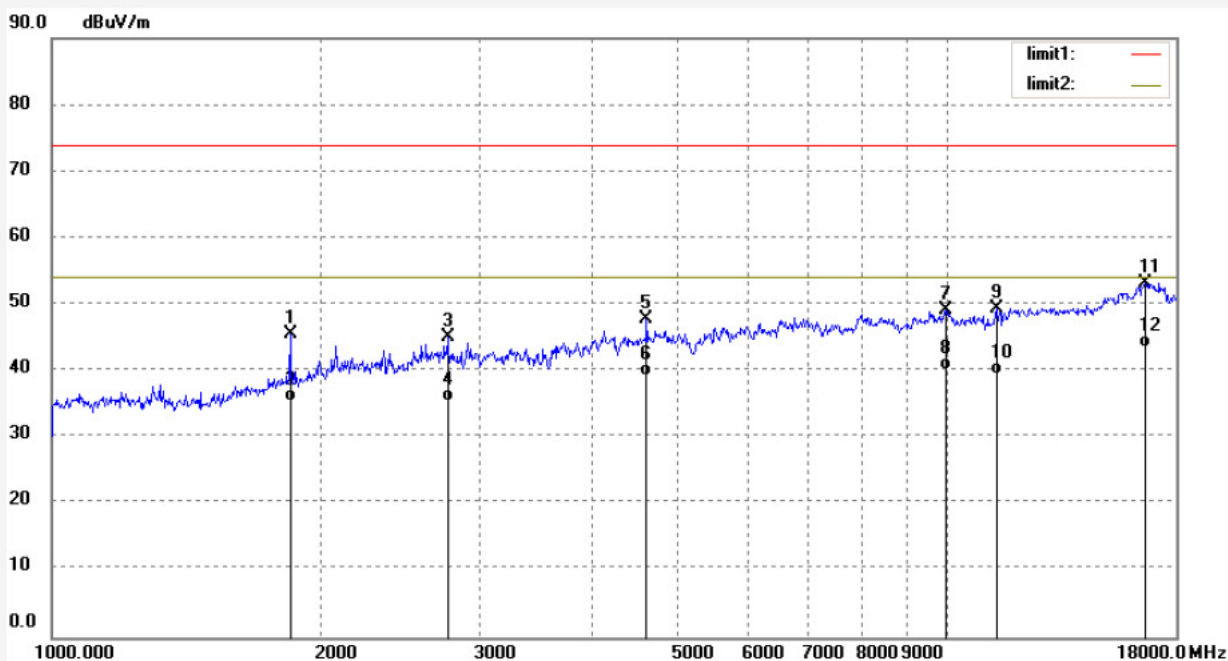
Date: 17/02/21/

Time: 20/10/24

Engineer Signature:

Distance: 3m

Note: Report NO.:ATE20170112



No.	Freq. (MHz)	Reading (dBuV/m)	Factor (dB)	Result (dBuV/m)	Limit (dBuV/m)	Margin (dB)	Detector	Height (cm)	Degree (deg.)	Remark
1	1845.515	50.45	-4.86	45.59	74.00	-28.41	peak			
2	1845.515	40.32	-4.86	35.46	54.00	-18.54	AVG			
3	2766.024	46.12	-0.96	45.16	74.00	-28.84	peak			
4	2766.024	36.45	-0.96	35.49	54.00	-18.51	AVG			
5	4613.592	43.74	4.07	47.81	74.00	-26.19	peak			
6	4613.592	35.22	4.07	39.29	54.00	-14.71	AVG			
7	9952.717	31.99	17.12	49.11	74.00	-24.89	peak			
8	9952.717	23.10	17.12	40.22	54.00	-13.78	AVG			
9	11335.193	30.21	19.12	49.33	74.00	-24.67	peak			
10	11335.193	20.35	19.12	39.47	54.00	-14.53	AVG			
11	16648.693	-6.48	59.78	53.30	74.00	-20.70	peak			
12	16648.693	-16.25	59.78	43.53	54.00	-10.47	AVG			



**ACCURATE TECHNOLOGY CO., LTD.**

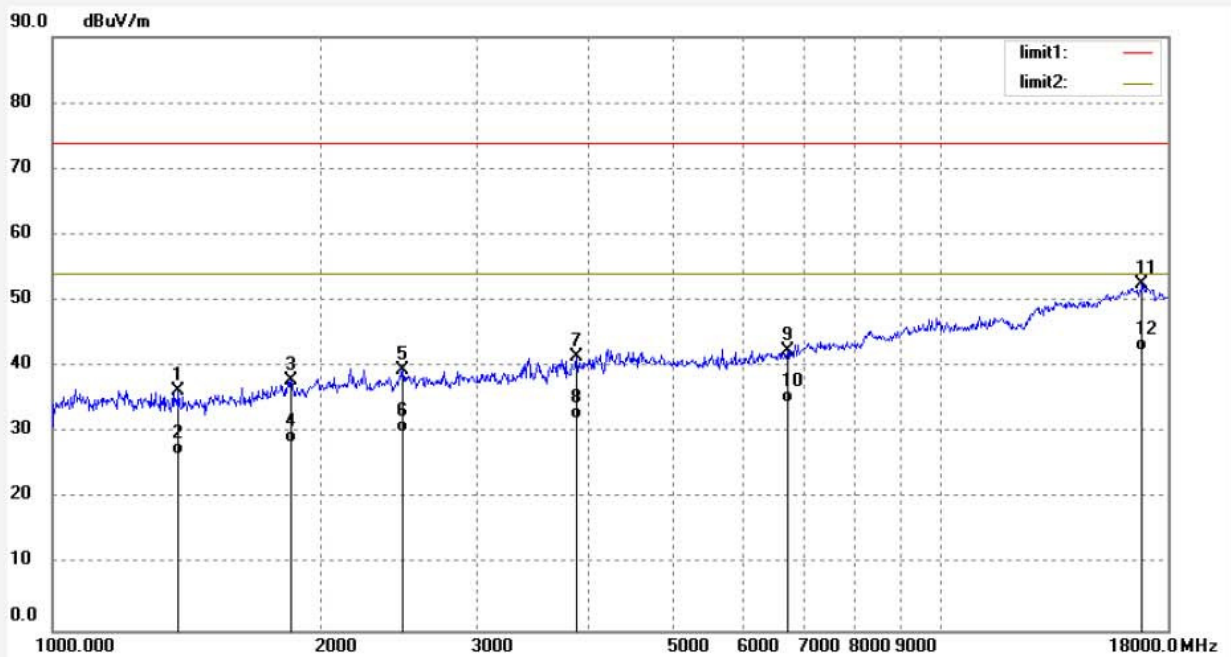
F1,Bldg,A,Changyuan New Material Port Keyuan Rd,  
Science & Industry Park,Nanshan Shenzhen,P.R.China

Site: 2# Chamber  
Tel:+86-0755-26503290  
Fax:+86-0755-26503396

Job No.: FRANK #1029  
Standard: FCC PK  
Test item: Radiation Test  
Temp.( C)/Hum.(%) 23 C / 48 %  
EUT: Interactive Flat Panel  
Mode: AV IN  
Model: ETX-7500UHD  
Manufacturer: XIAMEN PRIMA

Polarization: Horizontal  
Power Source: AC 120V/60Hz  
Date: 17/02/21/  
Time: 19/10/23  
Engineer Signature:  
Distance: 3m

Note: Report NO.:ATE20170112



No.	Freq. (MHz)	Reading (dBuV/m)	Factor (dB)	Result (dBuV/m)	Limit (dBuV/m)	Margin (dB)	Detector	Height (cm)	Degree (deg.)	Remark
1	1386.264	44.85	-8.53	36.32	74.00	-37.68	peak			
2	1386.264	35.16	-8.53	26.63	54.00	-27.37	AVG			
3	1856.215	42.67	-4.79	37.88	74.00	-36.12	peak			
4	1856.215	33.15	-4.79	28.36	54.00	-25.64	AVG			
5	2478.310	40.92	-1.41	39.51	74.00	-34.49	peak			
6	2478.310	31.45	-1.41	30.04	54.00	-23.96	AVG			
7	3890.255	39.92	1.62	41.54	74.00	-32.46	peak			
8	3890.255	30.45	1.62	32.07	54.00	-21.93	AVG			
9	6717.761	33.29	9.15	42.44	74.00	-31.56	peak			
10	6717.761	25.42	9.15	34.57	54.00	-19.43	AVG			
11	16842.294	-7.82	60.40	52.58	74.00	-21.42	peak			
12	16842.294	-18.00	60.40	42.40	54.00	-11.60	AVG			



**ACCURATE TECHNOLOGY CO., LTD.**

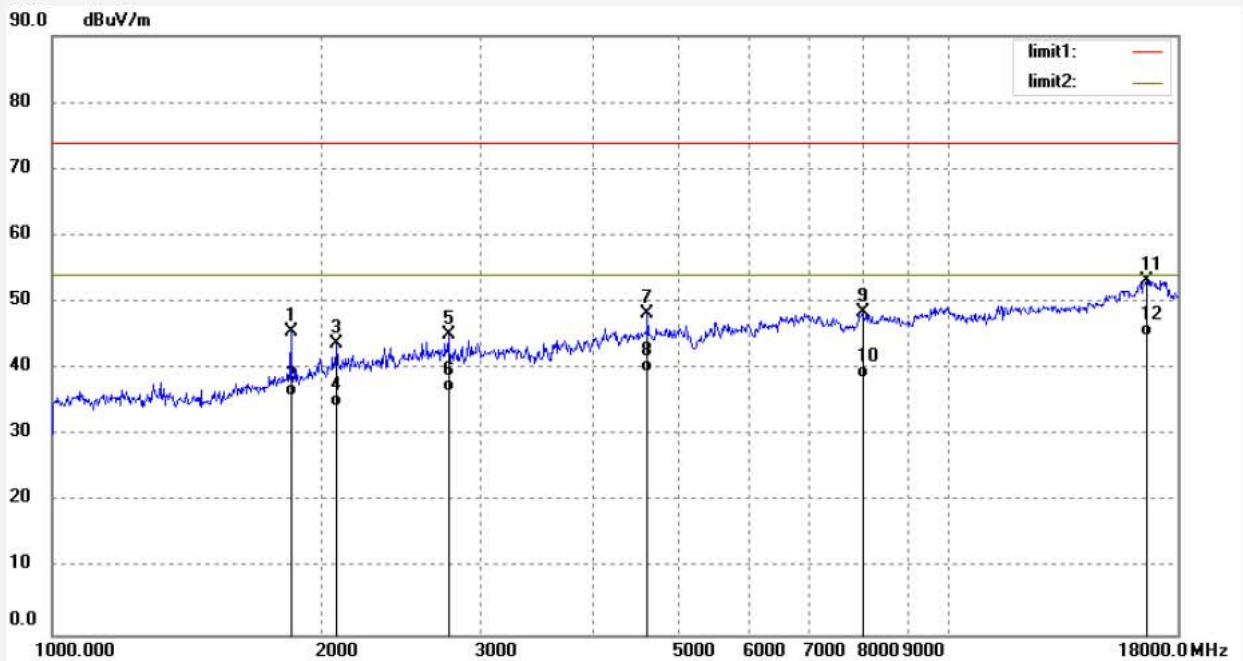
F1,Bldg,A,Changyuan New Material Port Keyuan Rd,  
Science & Industry Park,Nanshan Shenzhen,P.R.China

Site: 2# Chamber  
Tel:+86-0755-26503290  
Fax:+86-0755-26503396

Job No.: FRANK #1028  
Standard: FCC PK  
Test item: Radiation Test  
Temp.( C)/Hum.(%) 23 C / 48 %  
EUT: Interactive Flat Panel  
Mode: AV IN  
Model: ETX-7500UHD  
Manufacturer: XIAMEN PRIMA

Polarization: Vertical  
Power Source: AC 120V/60Hz  
Date: 17/02/21/  
Time: 18/59/54  
Engineer Signature:  
Distance: 3m

Note: Report NO.:ATE20170112



No.	Freq. (MHz)	Reading (dBuV/m)	Factor (dB)	Result (dBuV/m)	Limit (dBuV/m)	Margin (dB)	Detector	Height (cm)	Degree (deg.)	Remark
1	1845.515	50.45	-4.86	45.59	74.00	-28.41	peak			
2	1845.515	40.65	-4.86	35.79	54.00	-18.21	AVG			
3	2077.705	46.82	-3.11	43.71	74.00	-30.29	peak			
4	2077.705	37.51	-3.11	34.40	54.00	-19.60	AVG			
5	2766.024	46.12	-0.96	45.16	74.00	-28.84	peak			
6	2766.024	37.44	-0.96	36.48	54.00	-17.52	AVG			
7	4613.592	44.24	4.07	48.31	74.00	-25.69	peak			
8	4613.592	35.46	4.07	39.53	54.00	-14.47	AVG			
9	8013.020	35.40	13.11	48.51	74.00	-25.49	peak			
10	8013.020	25.42	13.11	38.53	54.00	-15.47	AVG			
11	16648.693	-6.48	59.78	53.30	74.00	-20.70	peak			
12	16648.693	-15.00	59.78	44.78	54.00	-9.22	AVG			



**ACCURATE TECHNOLOGY CO., LTD.**

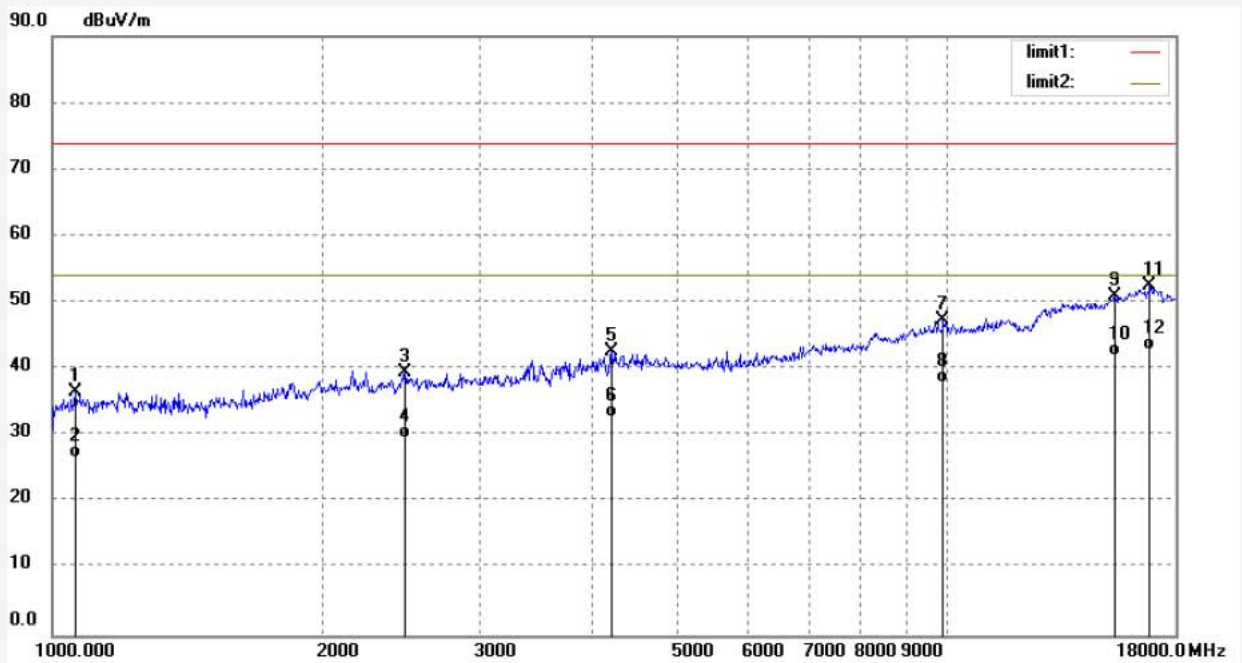
F1,Bldg,A,Changyuan New Material Port Keyuan Rd,  
Science & Industry Park,Nanshan Shenzhen,P.R.China

Site: 2# Chamber  
Tel:+86-0755-26503290  
Fax:+86-0755-26503396

Job No.: FRANK #1037  
Standard: FCC PK  
Test item: Radiation Test  
Temp.( C)/Hum.(%) 23 C / 48 %  
EUT: Interactive Flat Panel  
Mode: VGA IN  
Model: ETX-7500UHD  
Manufacturer: XIAMEN PRIMA

Polarization: Horizontal  
Power Source: AC 120V/60Hz  
Date: 17/02/21/  
Time: 20/38/57  
Engineer Signature:  
Distance: 3m

Note: Report NO.:ATE20170112



No.	Freq. (MHz)	Reading (dBuV/m)	Factor (dB)	Result (dBuV/m)	Limit (dBuV/m)	Margin (dB)	Detector	Height (cm)	Degree (deg.)	Remark
1	1059.511	45.31	-8.73	36.58	74.00	-37.42	peak			
2	1059.511	35.36	-8.73	26.63	54.00	-27.37	AVG			
3	2478.310	40.92	-1.41	39.51	74.00	-34.49	peak			
4	2478.310	30.95	-1.41	29.54	54.00	-24.46	AVG			
5	4218.186	39.96	2.57	42.53	74.00	-31.47	peak			
6	4218.186	30.10	2.57	32.67	54.00	-21.33	AVG			
7	9895.349	30.29	16.97	47.26	74.00	-26.74	peak			
8	9895.349	21.01	16.97	37.98	54.00	-16.02	AVG			
9	15398.832	-7.59	58.46	50.87	74.00	-23.13	peak			
10	15398.832	-16.52	58.46	41.94	54.00	-12.06	AVG			
11	16842.294	-7.82	60.40	52.58	74.00	-21.42	peak			
12	16842.294	-17.52	60.40	42.88	54.00	-11.12	AVG			



**ACCURATE TECHNOLOGY CO., LTD.**

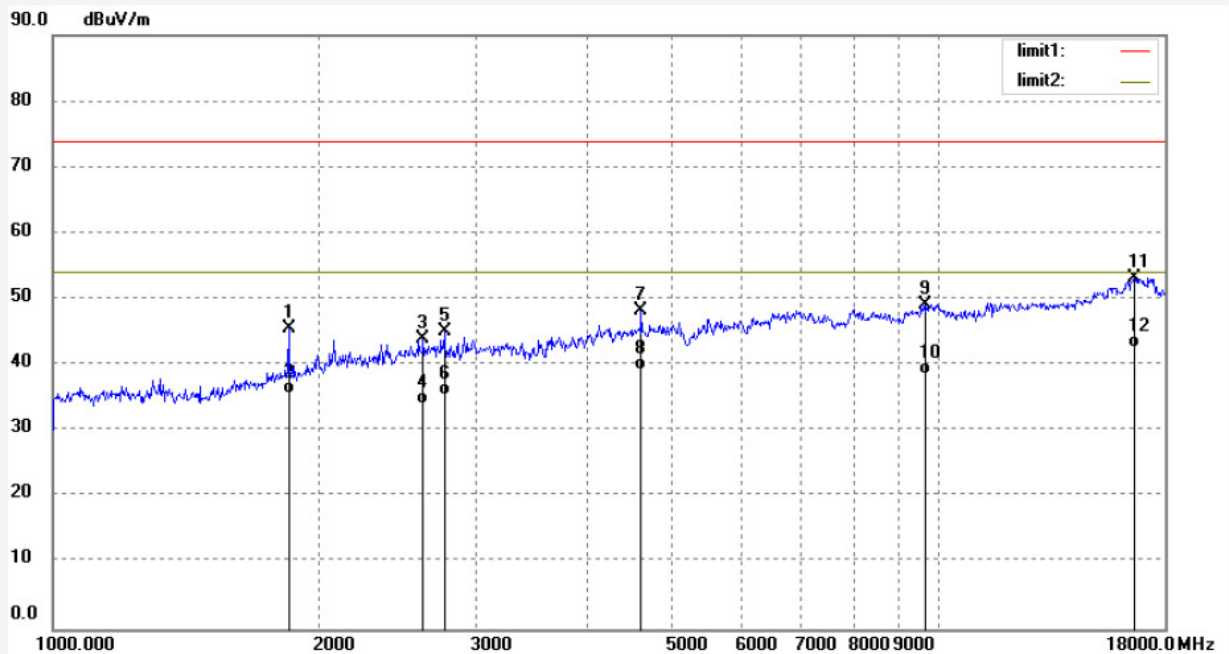
F1,Bldg,A,Changyuan New Material Port Keyuan Rd,  
Science & Industry Park,Nanshan Shenzhen,P.R.China

Site: 2# Chamber  
Tel:+86-0755-26503290  
Fax:+86-0755-26503396

Job No.: FRANK #1036  
Standard: FCC PK  
Test item: Radiation Test  
Temp.( C)/Hum.(%) 23 C / 48 %  
EUT: Interactive Flat Panel  
Mode: VGA IN  
Model: ETX-7500UHD  
Manufacturer: XIAMEN PRIMA

Polarization: Vertical  
Power Source: AC 120V/60Hz  
Date: 17/02/21/  
Time: 20/21/54  
Engineer Signature:  
Distance: 3m

Note: Report NO.:ATE20170112



No.	Freq. (MHz)	Reading (dBuV/m)	Factor (dB)	Result (dBuV/m)	Limit (dBuV/m)	Margin (dB)	Detector	Height (cm)	Degree (deg.)	Remark
1	1845.515	50.45	-4.86	45.59	74.00	-28.41	peak			
2	1845.515	40.56	-4.86	35.70	54.00	-18.30	AVG			
3	2618.218	45.16	-1.09	44.07	74.00	-29.93	peak			
4	2618.218	35.16	-1.09	34.07	54.00	-19.93	AVG			
5	2766.024	46.12	-0.96	45.16	74.00	-28.84	peak			
6	2766.024	36.51	-0.96	35.55	54.00	-18.45	AVG			
7	4613.592	44.24	4.07	48.31	74.00	-25.69	peak			
8	4613.592	35.12	4.07	39.19	54.00	-14.81	AVG			
9	9669.164	32.93	16.34	49.27	74.00	-24.73	peak			
10	9669.164	22.31	16.34	38.65	54.00	-15.35	AVG			
11	16648.693	-6.48	59.78	53.30	74.00	-20.70	peak			
12	16648.693	-17.25	59.78	42.53	54.00	-11.47	AVG			



**ACCURATE TECHNOLOGY CO., LTD.**

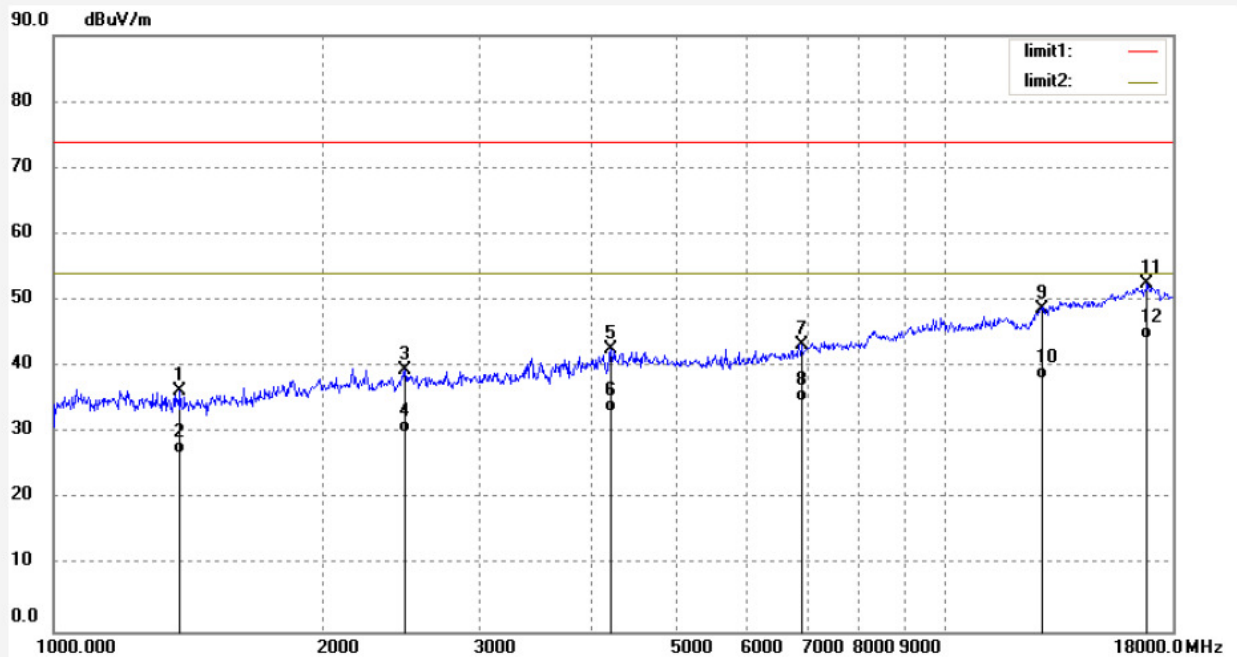
F1,Bldg,A,Changyuan New Material Port Keyuan Rd,  
Science & Industry Park,Nanshan Shenzhen,P.R.China

Site: 2# Chamber  
Tel:+86-0755-26503290  
Fax:+86-0755-26503396

Job No.: FRANK #1030  
Standard: FCC PK  
Test item: Radiation Test  
Temp.( C)/Hum.(%) 23 C / 48 %  
EUT: Interactive Flat Panel  
Mode: DP IN  
Model: ETX-7500UHD  
Manufacturer: XIAMEN PRIMA

Polarization: Horizontal  
Power Source: AC 120V/60Hz  
Date: 17/02/21/  
Time: 19/19/24  
Engineer Signature:  
Distance: 3m

Note: Report NO.:ATE20170112



No.	Freq. (MHz)	Reading (dBuV/m)	Factor (dB)	Result (dBuV/m)	Limit (dBuV/m)	Margin (dB)	Detector	Height (cm)	Degree (deg.)	Remark
1	1386.264	44.85	-8.53	36.32	74.00	-37.68	peak			
2	1386.264	35.45	-8.53	26.92	54.00	-27.08	AVG			
3	2478.310	40.92	-1.41	39.51	74.00	-34.49	peak			
4	2478.310	31.46	-1.41	30.05	54.00	-23.95	AVG			
5	4218.186	39.96	2.57	42.53	74.00	-31.47	peak			
6	4218.186	30.54	2.57	33.11	54.00	-20.89	AVG			
7	6894.806	34.01	9.37	43.38	74.00	-30.62	peak			
8	6894.806	25.46	9.37	34.83	54.00	-19.17	AVG			
9	12798.243	-6.83	55.57	48.74	74.00	-25.26	peak			
10	12835.288	-17.40	55.65	38.25	54.00	-15.75	AVG			
11	16842.294	-7.82	60.40	52.58	74.00	-21.42	peak			
12	16842.294	-16.14	60.40	44.26	54.00	-9.74	AVG			



**ACCURATE TECHNOLOGY CO., LTD.**

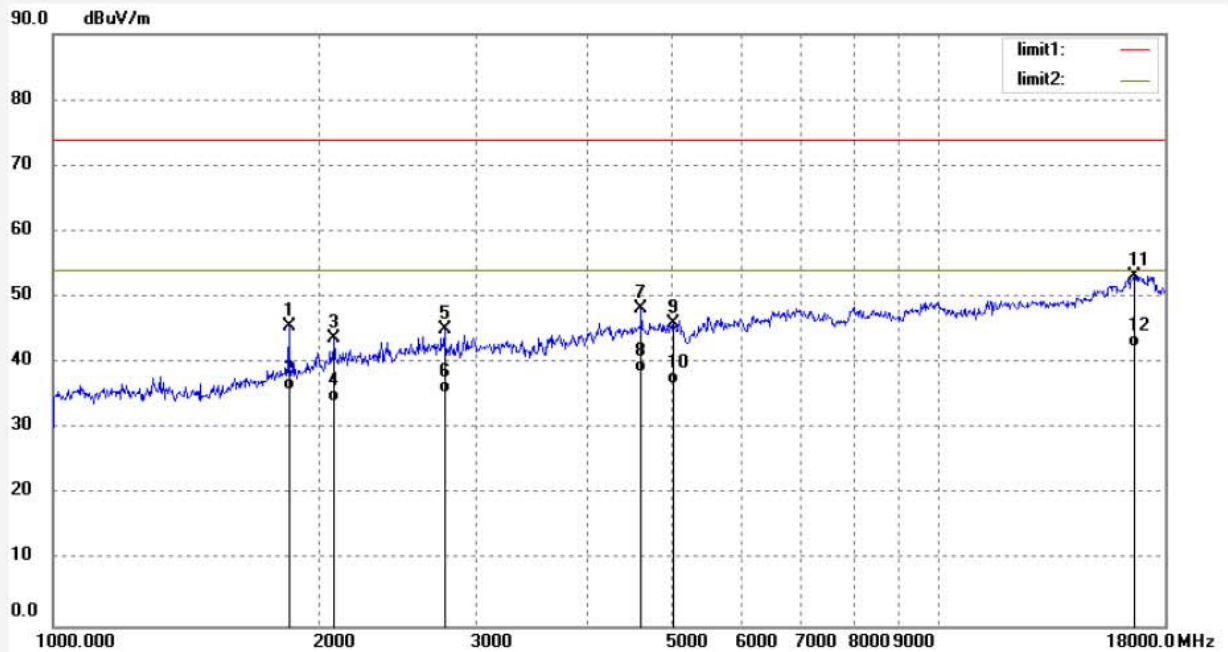
F1,Bldg,A,Changyuan New Material Port Keyuan Rd,  
Science & Industry Park,Nanshan Shenzhen,P.R.China

Site: 2# Chamber  
Tel:+86-0755-26503290  
Fax:+86-0755-26503396

Job No.: FRANK #1031  
Standard: FCC PK  
Test item: Radiation Test  
Temp.( C)/Hum.(%) 23 C / 48 %  
EUT: Interactive Flat Panel  
Mode: DP IN  
Model: ETX-7500UHD  
Manufacturer: XIAMEN PRIMA

Polarization: Vertical  
Power Source: AC 120V/60Hz  
Date: 17/02/21/  
Time: 19/27/54  
Engineer Signature:  
Distance: 3m

Note: Report NO.:ATE20170112



No.	Freq. (MHz)	Reading (dBuV/m)	Factor (dB)	Result (dBuV/m)	Limit (dBuV/m)	Margin (dB)	Detector	Height (cm)	Degree (deg.)	Remark
1	1845.515	50.45	-4.86	45.59	74.00	-28.41	peak			
2	1845.515	40.65	-4.86	35.79	54.00	-18.21	AVG			
3	2077.705	46.82	-3.11	43.71	74.00	-30.29	peak			
4	2077.705	37.24	-3.11	34.13	54.00	-19.87	AVG			
5	2766.024	46.12	-0.96	45.16	74.00	-28.84	peak			
6	2766.024	36.45	-0.96	35.49	54.00	-18.51	AVG			
7	4613.592	44.24	4.07	48.31	74.00	-25.69	peak			
8	4613.592	34.55	4.07	38.62	54.00	-15.38	AVG			
9	5016.976	39.82	6.27	46.09	74.00	-27.91	peak			
10	5016.976	30.62	6.27	36.89	54.00	-17.11	AVG			
11	16648.693	-6.48	59.78	53.30	74.00	-20.70	peak			
12	16648.693	-17.45	59.78	42.33	54.00	-11.67	AVG			



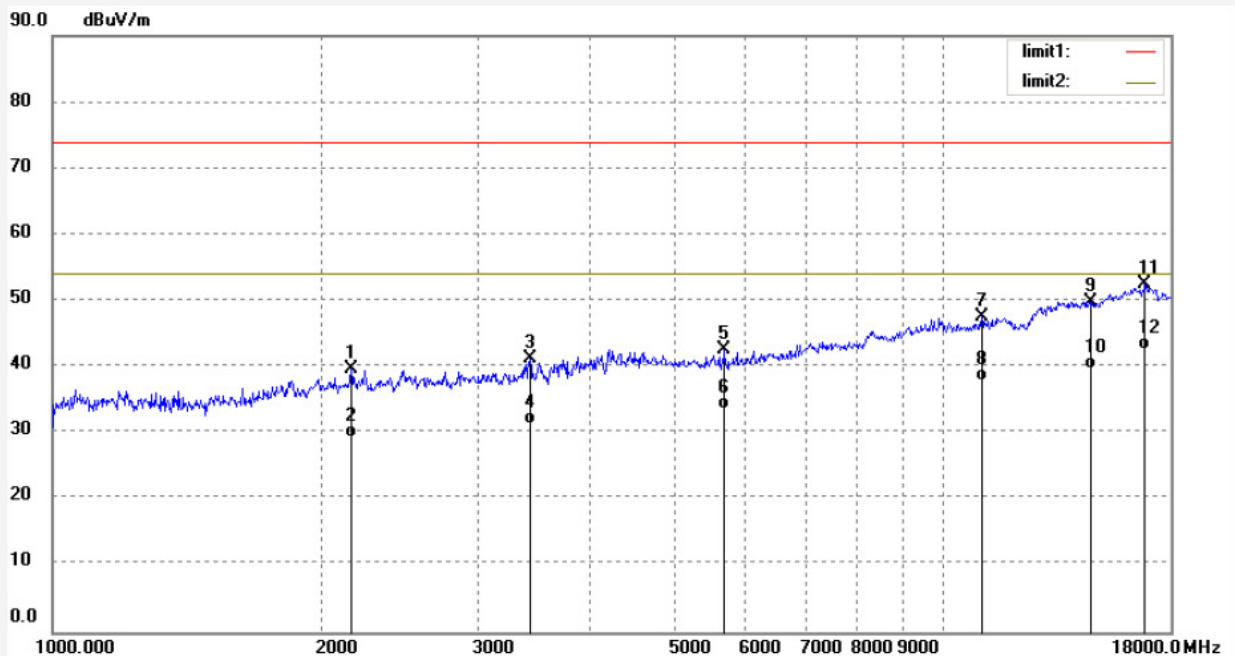
**ACCURATE TECHNOLOGY CO., LTD.**  
F1,Bldg,A,Changyuan New Material Port Keyuan Rd,  
Science & Industry Park,Nanshan Shenzhen,P.R.China

Site: 2# Chamber  
Tel:+86-0755-26503290  
Fax:+86-0755-26503396

Job No.: FRANK #1033  
Standard: FCC PK  
Test item: Radiation Test  
Temp.( C)/Hum.(%) 23 C / 48 %  
EUT: Interactive Flat Panel  
Mode: HDMI IN  
Model: ETX-7500UHD  
Manufacturer: XIAMEN PRIMA

Polarization: Horizontal  
Power Source: AC 120V/60Hz  
Date: 17/02/21/  
Time: 19/48/34  
Engineer Signature:  
Distance: 3m

Note: Report NO.:ATE20170112



No.	Freq. (MHz)	Reading (dBuV/m)	Factor (dB)	Result (dBuV/m)	Limit (dBuV/m)	Margin (dB)	Detector	Height (cm)	Degree (deg.)	Remark
1	2163.504	42.46	-2.79	39.67	74.00	-34.33	peak			
2	2163.504	32.25	-2.79	29.46	54.00	-24.54	AVG			
3	3435.590	41.03	0.20	41.23	74.00	-32.77	peak			
4	3435.590	31.08	0.20	31.28	54.00	-22.72	AVG			
5	5680.921	35.00	7.54	42.54	74.00	-31.46	peak			
6	5680.921	26.12	7.54	33.66	54.00	-20.34	AVG			
7	11044.129	30.20	17.29	47.49	74.00	-26.51	peak			
8	11044.129	20.64	17.29	37.93	54.00	-16.07	AVG			
9	14618.166	-10.36	60.17	49.81	74.00	-24.19	peak			
10	14618.166	-20.36	60.17	39.81	54.00	-14.19	AVG			
11	16842.294	-7.82	60.40	52.58	74.00	-21.42	peak			
12	16842.294	-17.82	60.40	42.58	54.00	-11.42	AVG			





**ACCURATE TECHNOLOGY CO., LTD.**

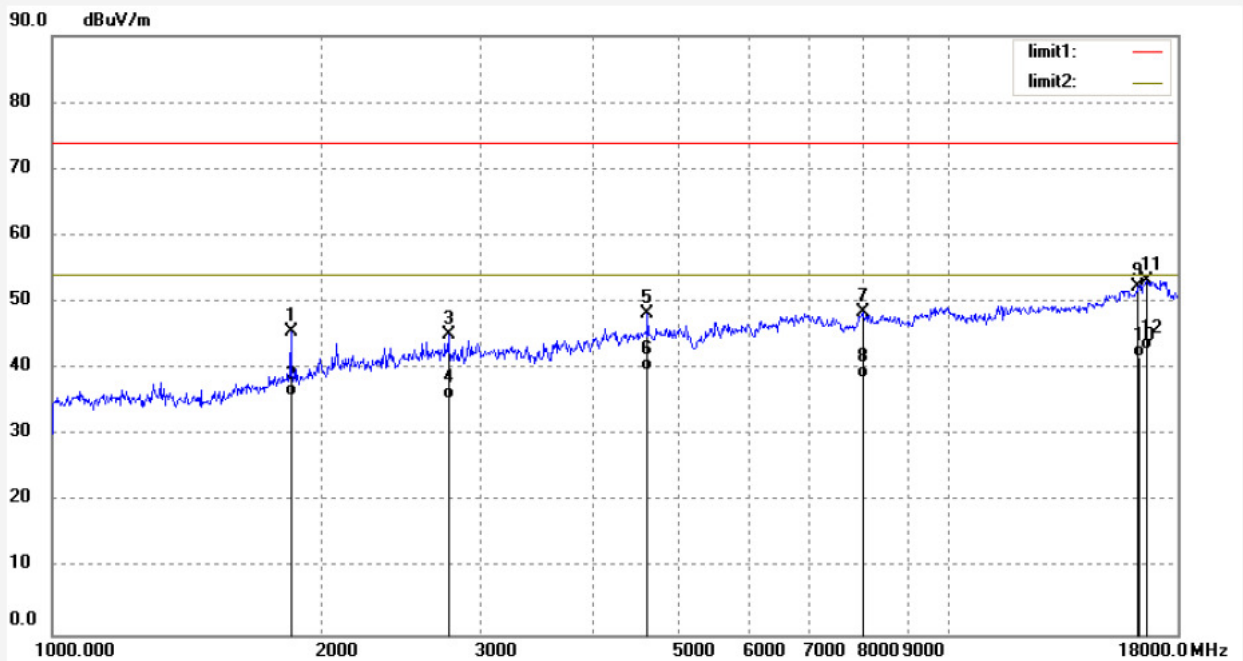
F1,Bldg,A,Changyuan New Material Port Keyuan Rd,  
Science & Industry Park,Nanshan Shenzhen,P.R.China

Site: 2# Chamber  
Tel:+86-0755-26503290  
Fax:+86-0755-26503396

Job No.: FRANK #1032  
Standard: FCC PK  
Test item: Radiation Test  
Temp.( C)/Hum.(%) 23 C / 48 %  
EUT: Interactive Flat Panel  
Mode: HDMI IN  
Model: ETX-7500UHD  
Manufacturer: XIAMEN PRIMA

Polarization: Vertical  
Power Source: AC 120V/60Hz  
Date: 17/02/21/  
Time: 19/34/36  
Engineer Signature:  
Distance: 3m

Note: Report NO.:ATE20170112



No.	Freq. (MHz)	Reading (dBuV/m)	Factor (dB)	Result (dBuV/m)	Limit (dBuV/m)	Margin (dB)	Detector	Height (cm)	Degree (deg.)	Remark
1	1845.515	50.45	-4.86	45.59	74.00	-28.41	peak			
2	1845.515	40.65	-4.86	35.79	54.00	-18.21	AVG			
3	2766.024	46.12	-0.96	45.16	74.00	-28.84	peak			
4	2766.024	36.45	-0.96	35.49	54.00	-18.51	AVG			
5	4613.592	44.24	4.07	48.31	74.00	-25.69	peak			
6	4613.592	35.66	4.07	39.73	54.00	-14.27	AVG			
7	8013.020	35.40	13.11	48.51	74.00	-25.49	peak			
8	8013.020	25.46	13.11	38.57	54.00	-15.43	AVG			
9	16268.142	-6.68	58.97	52.29	74.00	-21.71	peak			
10	16268.142	-17.21	58.97	41.76	54.00	-12.24	AVG			
11	16648.693	-6.48	59.78	53.30	74.00	-20.70	peak			
12	16648.693	-16.86	59.78	42.92	54.00	-11.08	AVG			



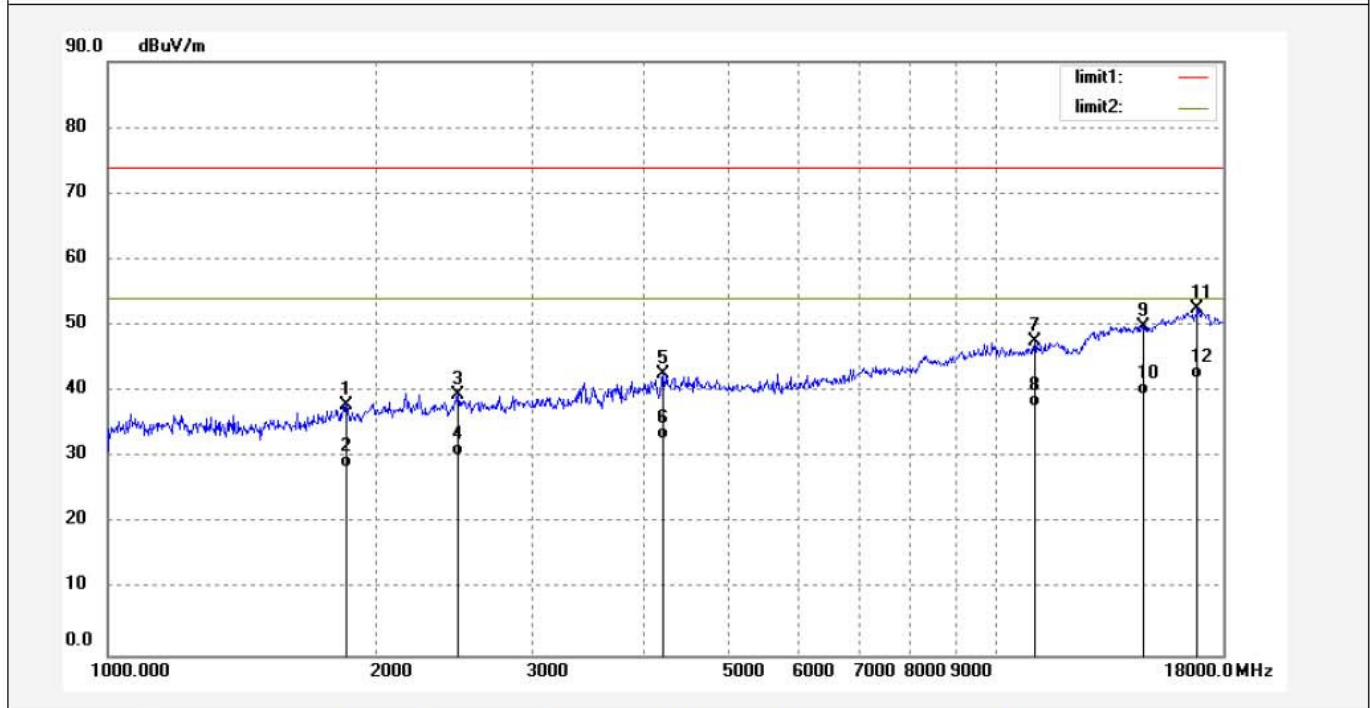
**ACCURATE TECHNOLOGY CO., LTD.**

F1,Bldg,A,Changyuan New Material Port Keyuan Rd,  
Science & Industry Park,Nanshan Shenzhen,P.R.China

Site: 2# Chamber  
Tel:+86-0755-26503290  
Fax:+86-0755-26503396

Job No.: FRANK #1026	Polarization: Horizontal
Standard: FCC PK	Power Source: AC 120V/60Hz
Test item: Radiation Test	Date: 17/02/21/
Temp.( C)/Hum.(%) 23 C / 48 %	Time: 18/35/21
EUT: Interactive Flat Panel	Engineer Signature:
Mode: Memory Playing	Distance: 3m
Model: ETX-7500UHD	
Manufacturer: XIAMEN PRIMA	

Note: Report NO.:ATE20170112



No.	Freq. (MHz)	Reading (dBuV/m)	Factor (dB)	Result (dBuV/m)	Limit (dBuV/m)	Margin (dB)	Detector	Height (cm)	Degree (deg.)	Remark
1	1856.215	42.67	-4.79	37.88	74.00	-36.12	peak			
2	1856.215	33.21	-4.79	28.42	54.00	-25.58	AVG			
3	2478.310	40.92	-1.41	39.51	74.00	-34.49	peak			
4	2478.310	31.60	-1.41	30.19	54.00	-23.81	AVG			
5	4218.186	39.96	2.57	42.53	74.00	-31.47	peak			
6	4218.186	30.13	2.57	32.70	54.00	-21.30	AVG			
7	11044.129	30.20	17.29	47.49	74.00	-26.51	peak			
8	11044.129	20.31	17.29	37.60	54.00	-16.40	AVG			
9	14618.166	-10.36	60.17	49.81	74.00	-24.19	peak			
10	14618.166	-20.63	60.17	39.54	54.00	-14.46	AVG			
11	16842.294	-7.82	60.40	52.58	74.00	-21.42	peak			
12	16842.294	-18.34	60.40	42.06	54.00	-11.94	AVG			



**ACCURATE TECHNOLOGY CO., LTD.**

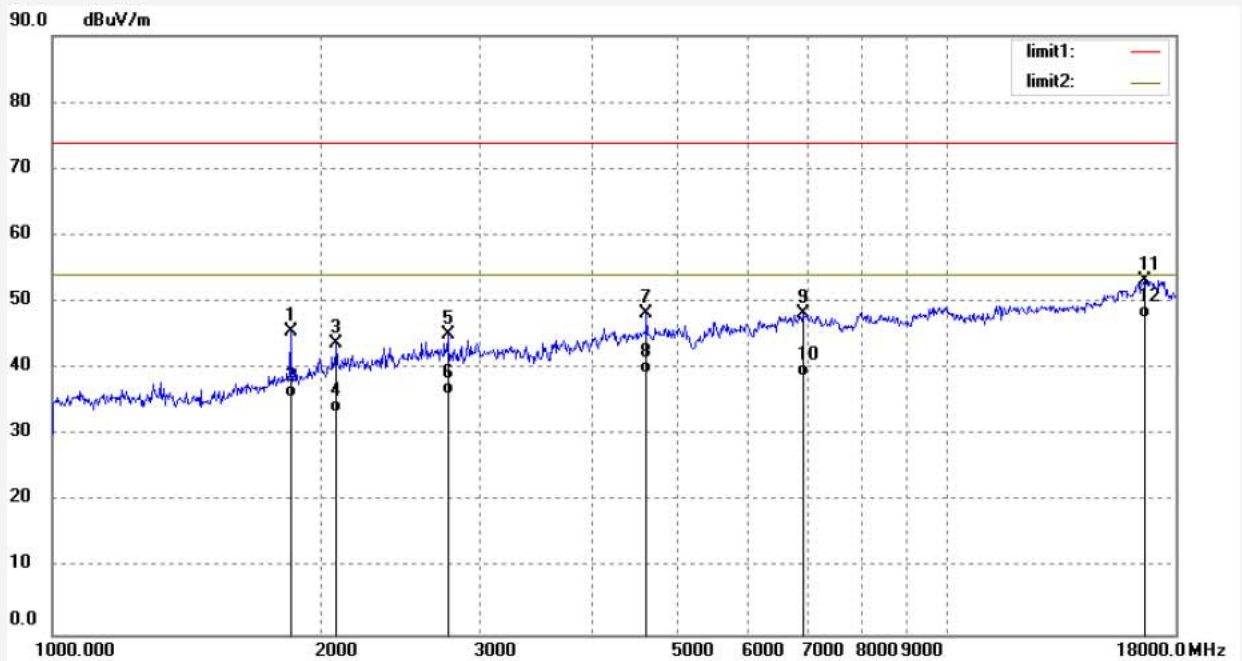
F1,Bldg,A,Changyuan New Material Port Keyuan Rd,  
Science & Industry Park,Nanshan Shenzhen,P.R.China

Site: 2# Chamber  
Tel:+86-0755-26503290  
Fax:+86-0755-26503396

Job No.: FRANK #1027  
Standard: FCC PK  
Test item: Radiation Test  
Temp.( C)/Hum.(%) 23 C / 48 %  
EUT: Interactive Flat Panel  
Mode: Memory Playing  
Model: ETX-7500UHD  
Manufacturer: XIAMEN PRIMA

Polarization: Vertical  
Power Source: AC 120V/60Hz  
Date: 17/02/21/  
Time: 18/46/23  
Engineer Signature:  
Distance: 3m

Note: Report NO.:ATE20170112

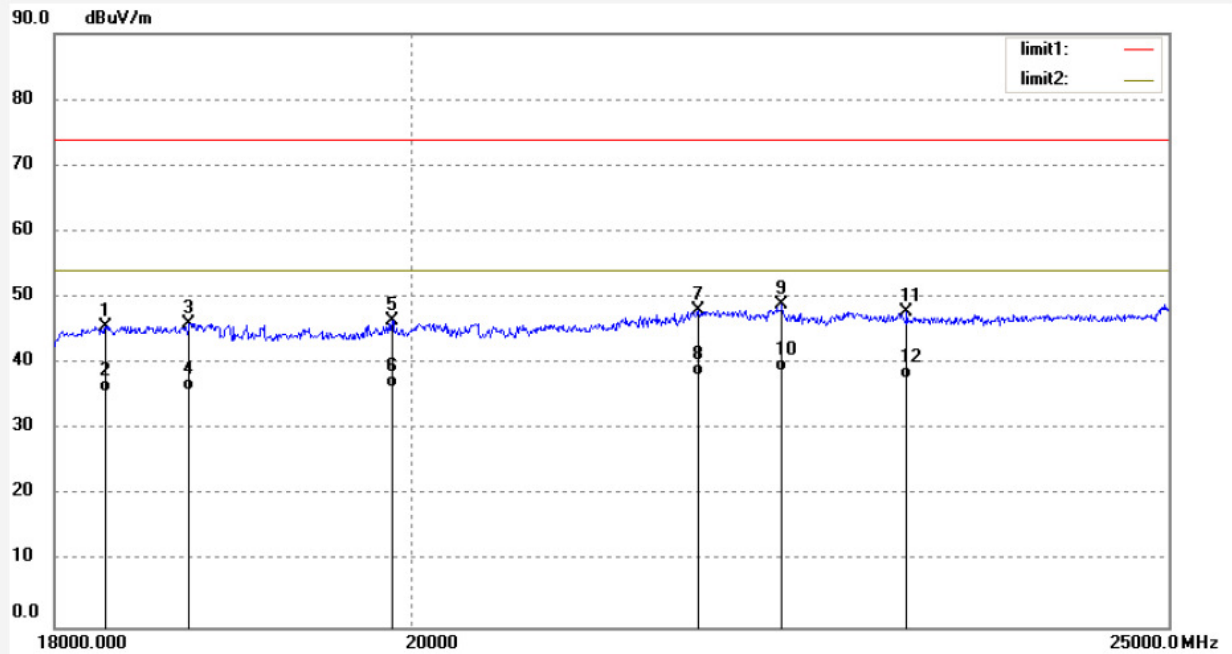


No.	Freq. (MHz)	Reading (dBuV/m)	Factor (dB)	Result (dBuV/m)	Limit (dBuV/m)	Margin (dB)	Detector	Height (cm)	Degree (deg.)	Remark
1	1845.515	50.45	-4.86	45.59	74.00	-28.41	peak			
2	1845.515	40.56	-4.86	35.70	54.00	-18.30	AVG			
3	2077.705	46.82	-3.11	43.71	74.00	-30.29	peak			
4	2077.705	36.48	-3.11	33.37	54.00	-20.63	AVG			
5	2766.024	46.12	-0.96	45.16	74.00	-28.84	peak			
6	2766.024	37.01	-0.96	36.05	54.00	-17.95	AVG			
7	4613.592	44.24	4.07	48.31	74.00	-25.69	peak			
8	4613.592	35.15	4.07	39.22	54.00	-14.78	AVG			
9	6914.763	38.84	9.38	48.22	74.00	-25.78	peak			
10	6914.763	29.43	9.38	38.81	54.00	-15.19	AVG			
11	16648.693	-6.48	59.78	53.30	74.00	-20.70	peak			
12	16648.693	-12.12	59.78	47.66	54.00	-6.34	AVG			

Job No.: FRANK #1040  
Standard: FCC PK  
Test item: Radiation Test  
Temp.( C)/Hum.(%) 23 C / 48 %  
EUT: Interactive Flat Panel  
Mode: USB IN  
Model: ETX-7500UHD  
Manufacturer: XIAMEN PRIMA

Polarization: Horizontal  
Power Source: AC 120V/60Hz  
Date: 17/02/22/  
Time: 08/46/54  
Engineer Signature:  
Distance: 3m

Note: Report NO.:ATE20170112



No.	Freq. (MHz)	Reading (dBuV/m)	Factor (dB)	Result (dBuV/m)	Limit (dBuV/m)	Margin (dB)	Detector	Height (cm)	Degree (deg.)	Remark
1	18280.000	7.65	37.94	45.59	74.00	-28.41	peak			
2	18280.000	-2.30	37.94	35.64	54.00	-18.36	AVG			
3	18735.000	8.81	37.27	46.08	74.00	-27.92	peak			
4	18735.000	-1.30	37.27	35.97	54.00	-18.03	AVG			
5	19890.000	8.22	38.21	46.43	74.00	-27.57	peak			
6	19890.000	-1.90	38.21	36.31	54.00	-17.69	AVG			
7	21766.000	9.00	38.99	47.99	74.00	-26.01	peak			
8	21766.000	-0.96	38.99	38.03	54.00	-15.97	AVG			
9	22312.000	9.17	39.67	48.84	74.00	-25.16	peak			
10	22312.000	-0.80	39.67	38.87	54.00	-15.13	AVG			
11	23145.000	8.01	39.71	47.72	74.00	-26.28	peak			
12	23145.000	-2.00	39.71	37.71	54.00	-16.29	AVG			



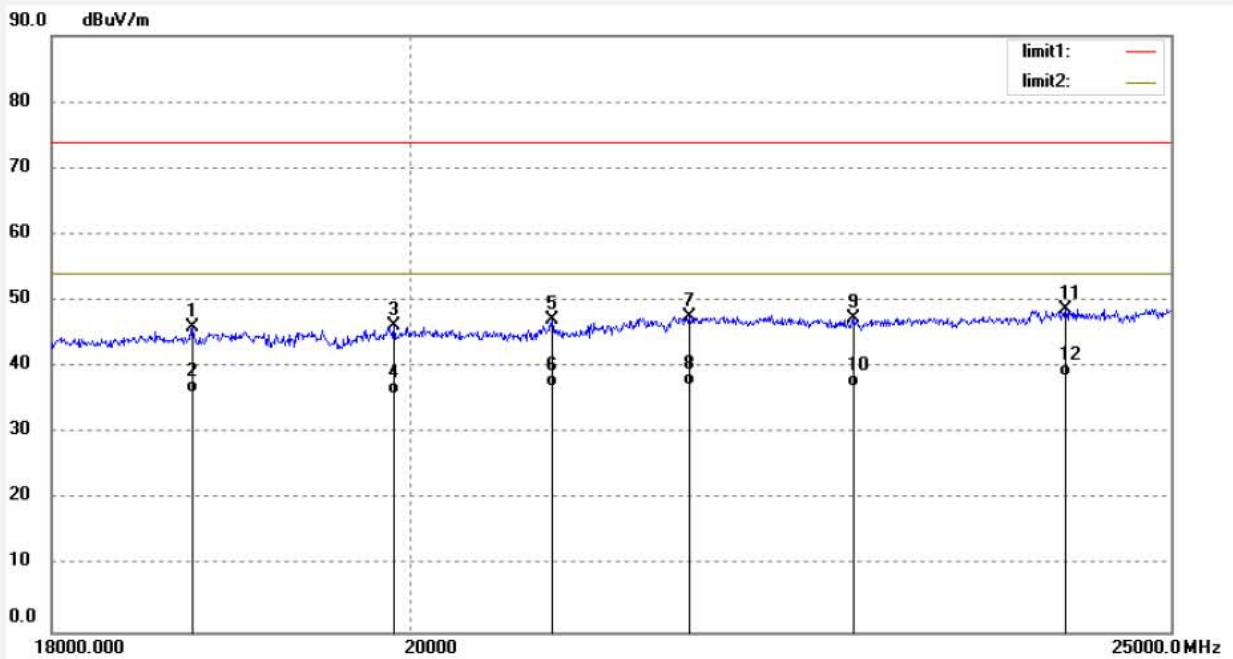
**ACCURATE TECHNOLOGY CO., LTD.**

F1,Bldg,A,Changyuan New Material Port Keyuan Rd,  
Science & Industry Park,Nanshan Shenzhen,P.R.China

Site: 2# Chamber  
Tel:+86-0755-26503290  
Fax:+86-0755-26503396

Job No.: FRANK #1041	Polarization: Vertical
Standard: FCC PK	Power Source: AC 120V/60Hz
Test item: Radiation Test	Date: 17/02/22/
Temp.( C)/Hum.(%) 23 C / 48 %	Time: 08/54/24
EUT: Interactive Flat Panel	Engineer Signature:
Mode: USB IN	Distance: 3m
Model: ETX-7500UHD	
Manufacturer: XIAMEN PRIMA	

Note: Report NO.:ATE20170112



No.	Freq. (MHz)	Reading (dBuV/m)	Factor (dB)	Result (dBuV/m)	Limit (dBuV/m)	Margin (dB)	Detector	Height (cm)	Degree (deg.)	Remark
1	18763.000	8.29	37.76	46.05	74.00	-27.95	peak			
2	18763.000	-1.60	37.76	36.16	54.00	-17.84	AVG			
3	19904.000	7.32	38.83	46.15	74.00	-27.85	peak			
4	19904.000	-3.00	38.83	35.83	54.00	-18.17	AVG			
5	20849.000	8.10	39.07	47.17	74.00	-26.83	peak			
6	20849.000	-2.00	39.07	37.07	54.00	-16.93	AVG			
7	21710.000	8.28	39.24	47.52	74.00	-26.48	peak			
8	21710.000	-1.90	39.24	37.34	54.00	-16.66	AVG			
9	22774.000	7.77	39.62	47.39	74.00	-26.61	peak			
10	22774.000	-2.60	39.62	37.02	54.00	-16.98	AVG			
11	24244.000	8.82	39.96	48.78	74.00	-25.22	peak			
12	24244.000	-1.30	39.96	38.66	54.00	-15.34	AVG			



**ACCURATE TECHNOLOGY CO., LTD.**

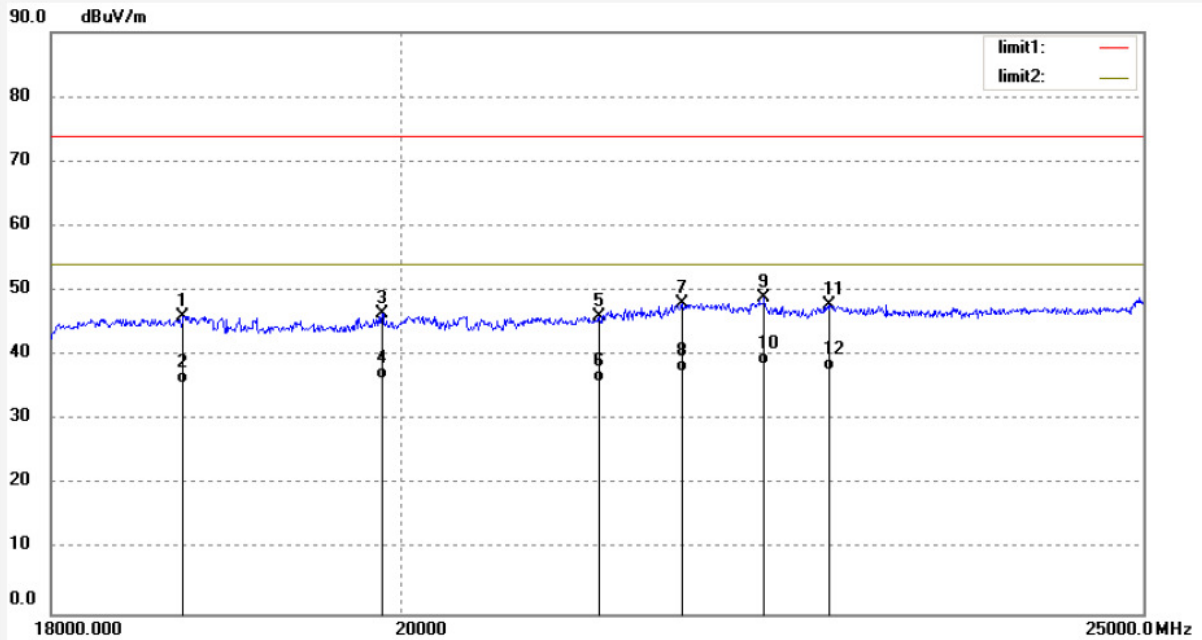
F1,Bldg,A,Changyuan New Material Port Keyuan Rd,  
Science & Industry Park,Nanshan Shenzhen,P.R.China

Site: 2# Chamber  
Tel:+86-0755-26503290  
Fax:+86-0755-26503396

Job No.: FRANK #1047  
Standard: FCC PK  
Test item: Radiation Test  
Temp.( C)/Hum.(%) 23 C / 48 %  
EUT: Interactive Flat Panel  
Mode: AV IN  
Model: ETX-7500UHD  
Manufacturer: XIAMEN PRIMA

Polarization: Horizontal  
Power Source: AC 120V/60Hz  
Date: 17/02/22/  
Time: 09/56/56  
Engineer Signature:  
Distance: 3m

Note: Report NO.:ATE20170112



No.	Freq. (MHz)	Reading (dBuV/m)	Factor (dB)	Result (dBuV/m)	Limit (dBuV/m)	Margin (dB)	Detector	Height (cm)	Degree (deg.)	Remark
1	18735.000	8.81	37.27	46.08	74.00	-27.92	peak			
2	18735.000	-1.60	37.27	35.67	54.00	-18.33	AVG			
3	19890.000	8.22	38.21	46.43	74.00	-27.57	peak			
4	19890.000	-1.90	38.21	36.31	54.00	-17.69	AVG			
5	21234.000	7.55	38.46	46.01	74.00	-27.99	peak			
6	21234.000	-2.60	38.46	35.86	54.00	-18.14	AVG			
7	21766.000	9.00	38.99	47.99	74.00	-26.01	peak			
8	21766.000	-1.50	38.99	37.49	54.00	-16.51	AVG			
9	22312.000	9.17	39.67	48.84	74.00	-25.16	peak			
10	22312.000	-1.00	39.67	38.67	54.00	-15.33	AVG			
11	22753.000	8.04	39.70	47.74	74.00	-26.26	peak			
12	22753.000	-2.00	39.70	37.70	54.00	-16.30	AVG			



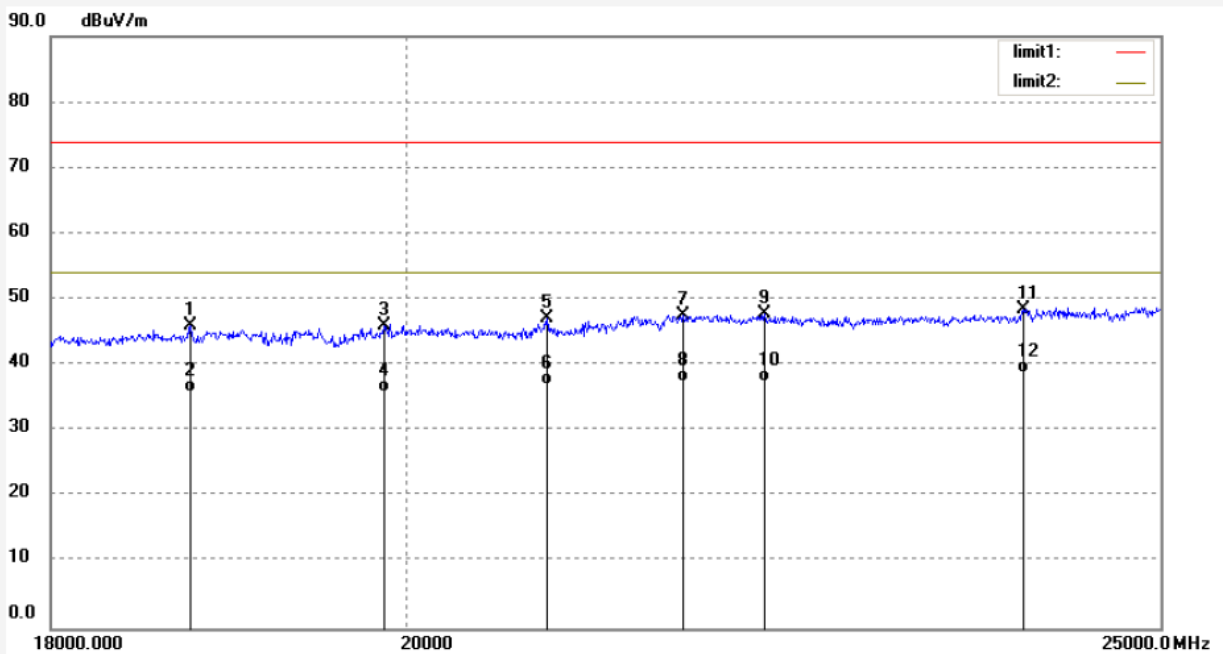
**ACCURATE TECHNOLOGY CO., LTD.**

F1,Bldg,A,Changyuan New Material Port Keyuan Rd,  
Science & Industry Park,Nanshan Shenzhen,P.R.China

Site: 2# Chamber  
Tel:+86-0755-26503290  
Fax:+86-0755-26503396

Job No.: FRANK #1046	Polarization: Vertical
Standard: FCC PK	Power Source: AC 120V/60Hz
Test item: Radiation Test	Date: 17/02/22/
Temp.( C)/Hum.(%) 23 C / 48 %	Time: 09/41/55
EUT: Interactive Flat Panel	Engineer Signature:
Mode: AV IN	Distance: 3m
Model: ETX-7500UHD	
Manufacturer: XIAMEN PRIMA	

Note: Report NO.:ATE20170112



No.	Freq. (MHz)	Reading (dBuV/m)	Factor (dB)	Result (dBuV/m)	Limit (dBuV/m)	Margin (dB)	Detector	Height (cm)	Degree (deg.)	Remark
1	18763.000	8.29	37.76	46.05	74.00	-27.95	peak			
2	18763.000	-1.90	37.76	35.86	54.00	-18.14	AVG			
3	19869.000	7.34	38.76	46.10	74.00	-27.90	peak			
4	19869.000	-2.90	38.76	35.86	54.00	-18.14	AVG			
5	20849.000	8.10	39.07	47.17	74.00	-26.83	peak			
6	20849.000	-2.00	39.07	37.07	54.00	-16.93	AVG			
7	21710.000	8.28	39.24	47.52	74.00	-26.48	peak			
8	21710.000	-1.80	39.24	37.44	54.00	-16.56	AVG			
9	22235.000	8.53	39.29	47.82	74.00	-26.18	peak			
10	22235.000	-1.80	39.29	37.49	54.00	-16.51	AVG			
11	24006.000	8.84	39.74	48.58	74.00	-25.42	peak			
12	24006.000	-1.00	39.74	38.74	54.00	-15.26	AVG			



**ACCURATE TECHNOLOGY CO., LTD.**

F1,Bldg,A,Changyuan New Material Port Keyuan Rd,  
Science & Industry Park,Nanshan Shenzhen,P.R.China

Site: 2# Chamber  
Tel:+86-0755-26503290  
Fax:+86-0755-26503396

Job No.: FRANK #1039

Polarization: Horizontal

Standard: FCC PK

Power Source: AC 120V/60Hz

Test item: Radiation Test

Date: 17/02/22/

Temp.( C)/Hum.(%) 23 C / 48 %

Time: 08/34/08

EUT: Interactive Flat Panel

Engineer Signature:

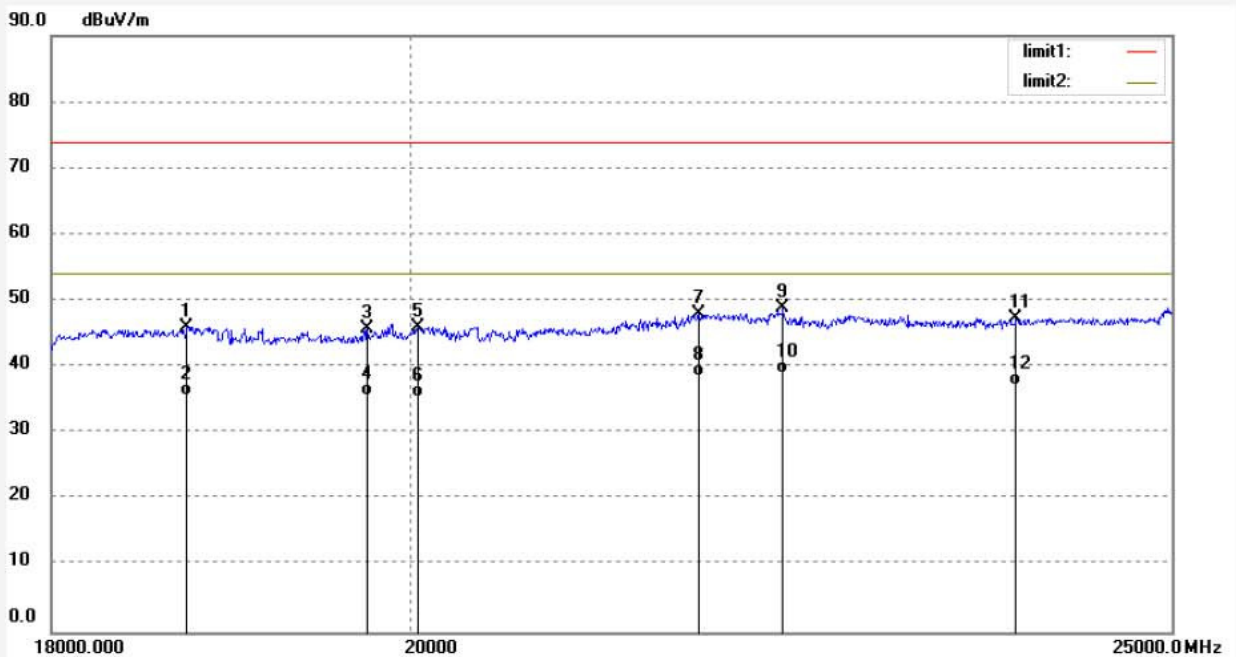
Mode: VGA IN

Distance: 3m

Model: ETX-7500UHD

Manufacturer: XIAMEN PRIMA

Note: Report NO.:ATE20170112



No.	Freq. (MHz)	Reading (dBuV/m)	Factor (dB)	Result (dBuV/m)	Limit (dBuV/m)	Margin (dB)	Detector	Height (cm)	Degree (deg.)	Remark
1	18735.000	8.81	37.27	46.08	74.00	-27.92	peak			
2	18735.000	-1.60	37.27	35.67	54.00	-18.33	AVG			
3	19750.000	7.86	38.03	45.89	74.00	-28.11	peak			
4	19750.000	-2.30	38.03	35.73	54.00	-18.27	AVG			
5	20044.000	7.77	38.35	46.12	74.00	-27.88	peak			
6	20044.000	-2.89	38.35	35.46	54.00	-18.54	AVG			
7	21766.000	9.00	38.99	47.99	74.00	-26.01	peak			
8	21766.000	-0.50	38.99	38.49	54.00	-15.51	AVG			
9	22312.000	9.17	39.67	48.84	74.00	-25.16	peak			
10	22312.000	-0.60	39.67	39.07	54.00	-14.93	AVG			
11	23887.000	6.96	40.34	47.30	74.00	-26.70	peak			
12	23887.000	-3.10	40.34	37.24	54.00	-16.76	AVG			





**ACCURATE TECHNOLOGY CO., LTD.**

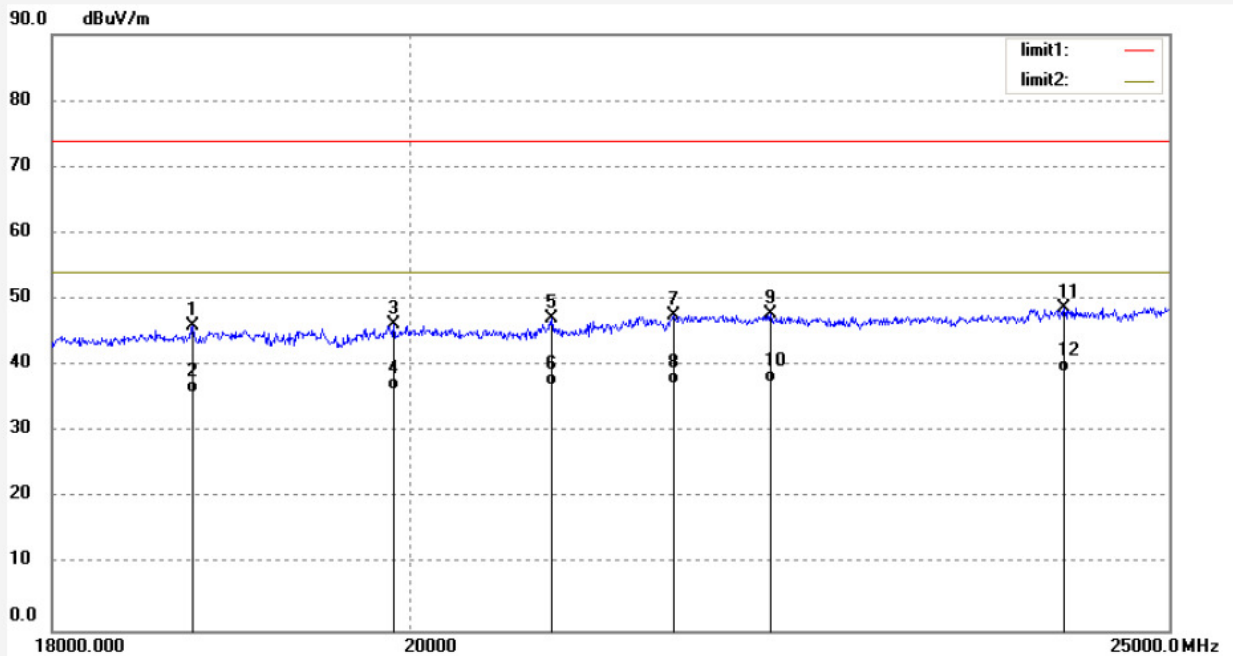
F1,Bldg,A,Changyuan New Material Port Keyuan Rd,  
Science & Industry Park,Nanshan Shenzhen,P.R.China

Site: 2# Chamber  
Tel:+86-0755-26503290  
Fax:+86-0755-26503396

Job No.: FRANK #1038  
Standard: FCC PK  
Test item: Radiation Test  
Temp.( C)/Hum.(%) 23 C / 48 %  
EUT: Interactive Flat Panel  
Mode: VGA IN  
Model: ETX-7500UHD  
Manufacturer: XIAMEN PRIMA

Polarization: Vertical  
Power Source: AC 120V/60Hz  
Date: 17/02/22/  
Time: 08/23/14  
Engineer Signature:  
Distance: 3m

Note: Report NO.:ATE20170112



No.	Freq. (MHz)	Reading (dBuV/m)	Factor (dB)	Result (dBuV/m)	Limit (dBuV/m)	Margin (dB)	Detector	Height (cm)	Degree (deg.)	Remark
1	18763.000	8.29	37.76	46.05	74.00	-27.95	peak			
2	18763.000	-1.90	37.76	35.86	54.00	-18.14	AVG			
3	19904.000	7.32	38.83	46.15	74.00	-27.85	peak			
4	19904.000	-2.60	38.83	36.23	54.00	-17.77	AVG			
5	20849.000	8.10	39.07	47.17	74.00	-26.83	peak			
6	20849.000	-2.00	39.07	37.07	54.00	-16.93	AVG			
7	21612.000	8.23	39.25	47.48	74.00	-26.52	peak			
8	21612.000	-2.00	39.25	37.25	54.00	-16.75	AVG			
9	22235.000	8.53	39.29	47.82	74.00	-26.18	peak			
10	22235.000	-1.90	39.29	37.39	54.00	-16.61	AVG			
11	24244.000	8.82	39.96	48.78	74.00	-25.22	peak			
12	24244.000	-1.00	39.96	38.96	54.00	-15.04	AVG			



**ACCURATE TECHNOLOGY CO., LTD.**

F1,Bldg,A,Changyuan New Material Port Keyuan Rd,  
Science & Industry Park,Nanshan Shenzhen,P.R.China

Site: 2# Chamber  
Tel:+86-0755-26503290  
Fax:+86-0755-26503396

Job No.: FRANK #1044

Polarization: Horizontal

Standard: FCC PK

Power Source: AC 120V/60Hz

Test item: Radiation Test

Date: 17/02/22/

Temp.( C)/Hum.(%) 23 C / 48 %

Time: 09/26/43

EUT: Interactive Flat Panel

Engineer Signature:

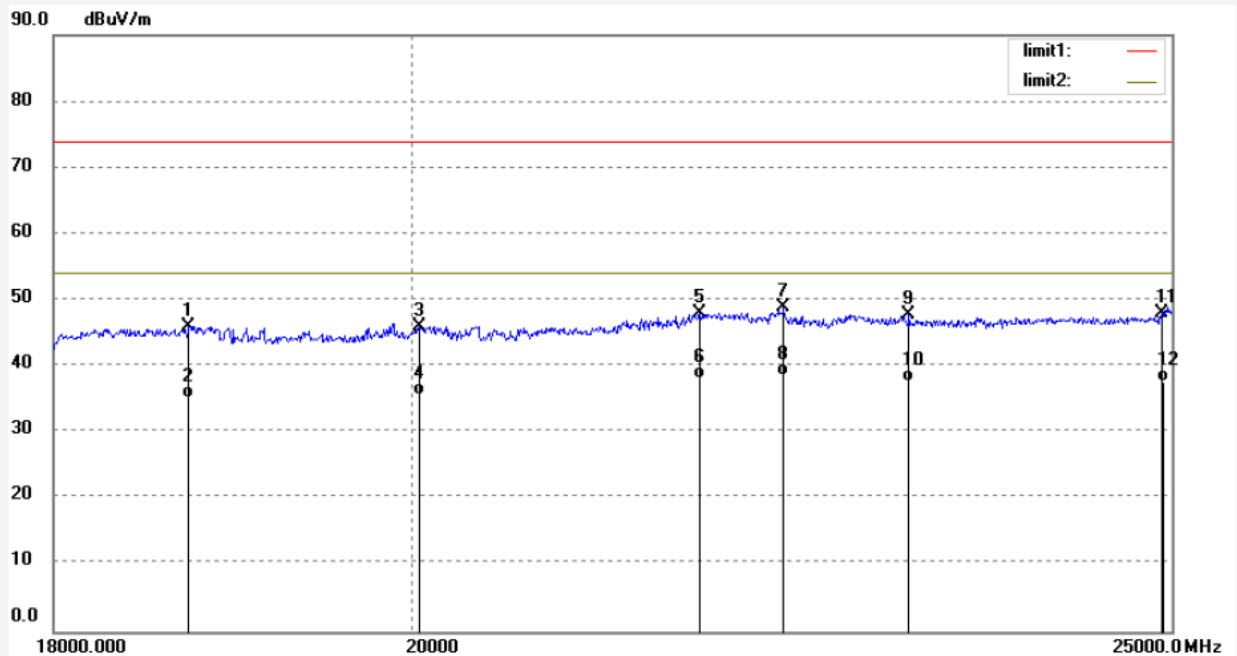
Mode: DP IN

Distance: 3m

Model: ETX-7500UHD

Manufacturer: XIAMEN PRIMA

Note: Report NO.:ATE20170112



No.	Freq. (MHz)	Reading (dBuV/m)	Factor (dB)	Result (dBuV/m)	Limit (dBuV/m)	Margin (dB)	Detector	Height (cm)	Degree (deg.)	Remark
1	18735.000	8.81	37.27	46.08	74.00	-27.92	peak			
2	18735.000	-2.10	37.27	35.17	54.00	-18.83	AVG			
3	20044.000	7.77	38.35	46.12	74.00	-27.88	peak			
4	20044.000	-2.60	38.35	35.75	54.00	-18.25	AVG			
5	21766.000	9.00	38.99	47.99	74.00	-26.01	peak			
6	21766.000	-0.80	38.99	38.19	54.00	-15.81	AVG			
7	22312.000	9.17	39.67	48.84	74.00	-25.16	peak			
8	22312.000	-1.00	39.67	38.67	54.00	-15.33	AVG			
9	23145.000	8.01	39.71	47.72	74.00	-26.28	peak			
10	23145.000	-2.00	39.71	37.71	54.00	-16.29	AVG			
11	24930.000	8.21	39.74	47.95	74.00	-26.05	peak			
12	24930.000	-2.00	39.74	37.74	54.00	-16.26	AVG			



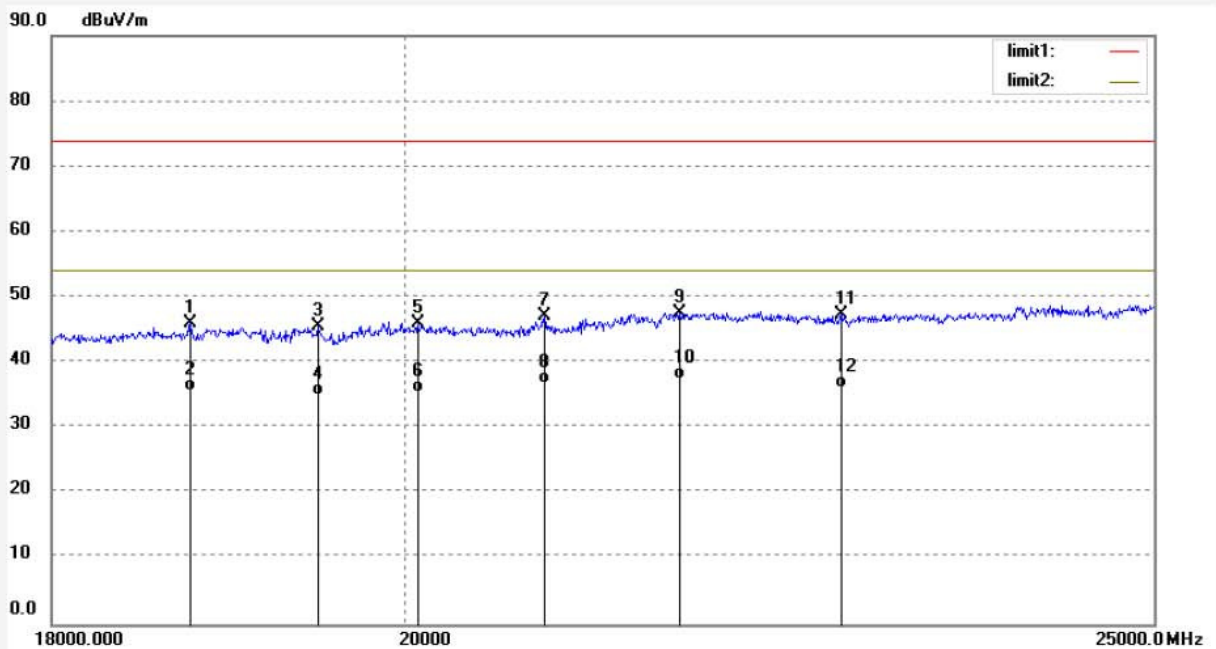
**ACCURATE TECHNOLOGY CO., LTD.**

F1,Bldg,A,Changyuan New Material Port Keyuan Rd,  
Science & Industry Park,Nanshan Shenzhen,P.R.China

Site: 2# Chamber  
Tel:+86-0755-26503290  
Fax:+86-0755-26503396

Job No.: FRANK #1045	Polarization: Vertical
Standard: FCC PK	Power Source: AC 120V/60Hz
Test item: Radiation Test	Date: 17/02/22/
Temp.( C)/Hum.(%) 23 C / 48 %	Time: 09/35/43
EUT: Interactive Flat Panel	Engineer Signature:
Mode: DP IN	Distance: 3m
Model: ETX-7500UHD	
Manufacturer: XIAMEN PRIMA	

Note: Report NO.:ATE20170112



No.	Freq. (MHz)	Reading (dBuV/m)	Factor (dB)	Result (dBuV/m)	Limit (dBuV/m)	Margin (dB)	Detector	Height (cm)	Degree (deg.)	Remark
1	18763.000	8.29	37.76	46.05	74.00	-27.95	peak			
2	18763.000	-2.00	37.76	35.76	54.00	-18.24	AVG			
3	19491.000	7.44	38.05	45.49	74.00	-28.51	peak			
4	19491.000	-3.10	38.05	34.95	54.00	-19.05	AVG			
5	20079.000	7.14	38.89	46.03	74.00	-27.97	peak			
6	20079.000	-3.35	38.89	35.54	54.00	-18.46	AVG			
7	20849.000	8.10	39.07	47.17	74.00	-26.83	peak			
8	20849.000	-2.30	39.07	36.77	54.00	-17.23	AVG			
9	21710.000	8.28	39.24	47.52	74.00	-26.48	peak			
10	21710.000	-1.80	39.24	37.44	54.00	-16.56	AVG			
11	22774.000	7.77	39.62	47.39	74.00	-26.61	peak			
12	22774.000	-3.50	39.62	36.12	54.00	-17.88	AVG			



**ACCURATE TECHNOLOGY CO., LTD.**

F1,Bldg,A,Changyuan New Material Port Keyuan Rd,  
Science & Industry Park,Nanshan Shenzhen,P.R.China

Site: 2# Chamber  
Tel:+86-0755-26503290  
Fax:+86-0755-26503396

Job No.: FRANK #1043

Standard: FCC PK

Test item: Radiation Test

Temp.( C)/Hum.(%) 23 C / 48 %

EUT: Interactive Flat Panel

Mode: HDMI IN

Model: ETX-7500UHD

Manufacturer: XIAMEN PRIMA

Polarization: Horizontal

Power Source: AC 120V/60Hz

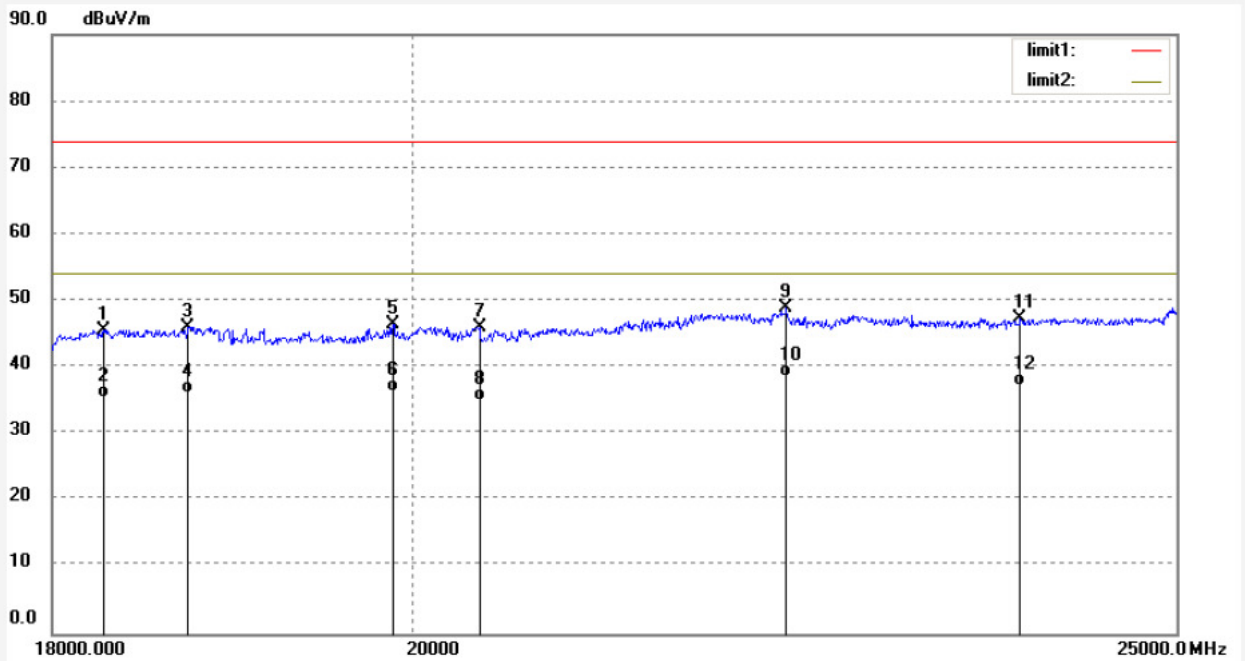
Date: 17/02/22/

Time: 09/16/21

Engineer Signature:

Distance: 3m

Note: Report NO.:ATE20170112



No.	Freq. (MHz)	Reading (dBuV/m)	Factor (dB)	Result (dBuV/m)	Limit (dBuV/m)	Margin (dB)	Detector	Height (cm)	Degree (deg.)	Remark
1	18280.000	7.65	37.94	45.59	74.00	-28.41	peak			
2	18280.000	-2.50	37.94	35.44	54.00	-18.56	AVG			
3	18735.000	8.81	37.27	46.08	74.00	-27.92	peak			
4	18735.000	-1.10	37.27	36.17	54.00	-17.83	AVG			
5	19890.000	8.22	38.21	46.43	74.00	-27.57	peak			
6	19890.000	-1.90	38.21	36.31	54.00	-17.69	AVG			
7	20394.000	7.65	38.28	45.93	74.00	-28.07	peak			
8	20394.000	-3.20	38.28	35.08	54.00	-18.92	AVG			
9	22312.000	9.17	39.67	48.84	74.00	-25.16	peak			
10	22312.000	-1.10	39.67	38.57	54.00	-15.43	AVG			
11	23887.000	6.96	40.34	47.30	74.00	-26.70	peak			
12	23887.000	-3.20	40.34	37.14	54.00	-16.86	AVG			



**ACCURATE TECHNOLOGY CO., LTD.**

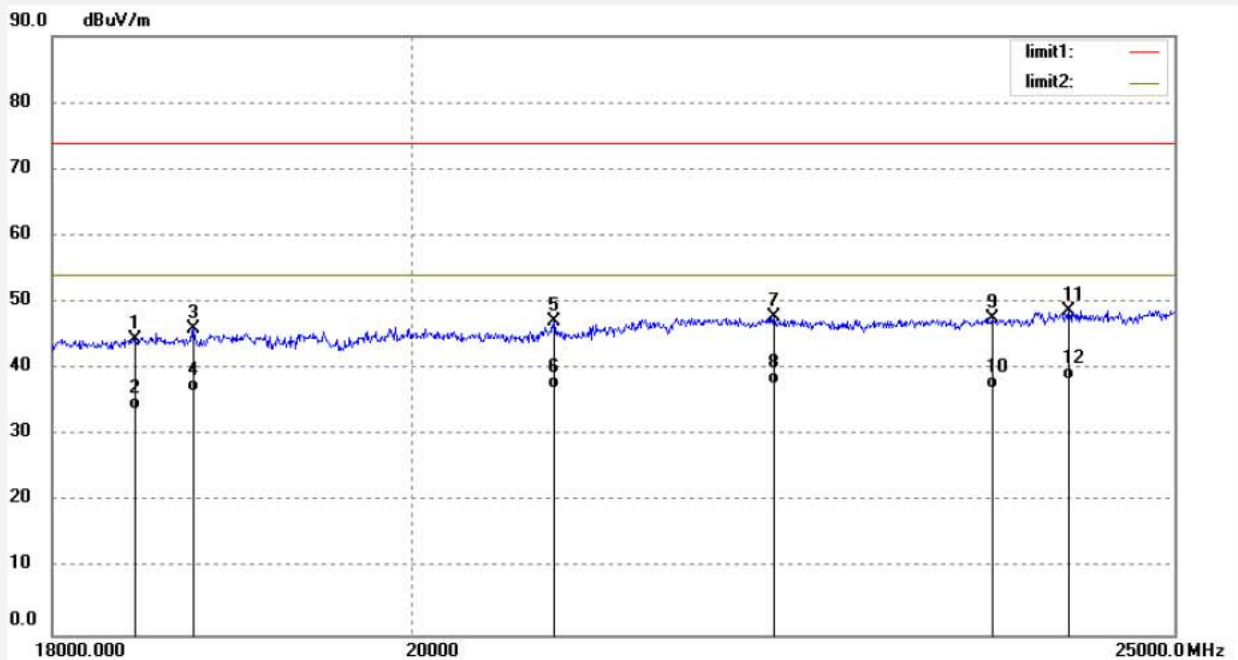
F1,Bldg,A,Changyuan New Material Port Keyuan Rd,  
Science & Industry Park,Nanshan Shenzhen,P.R.China

Site: 2# Chamber  
Tel:+86-0755-26503290  
Fax:+86-0755-26503396

Job No.: FRANK #1042  
Standard: FCC PK  
Test item: Radiation Test  
Temp.( C)/Hum.(%) 23 C / 48 %  
EUT: Interactive Flat Panel  
Mode: HDMI IN  
Model: ETX-7500UHD  
Manufacturer: XIAMEN PRIMA

Polarization: Vertical  
Power Source: AC 120V/60Hz  
Date: 17/02/22/  
Time: 09/03/54  
Engineer Signature:  
Distance: 3m

Note: Report NO.:ATE20170112



No.	Freq. (MHz)	Reading (dBuV/m)	Factor (dB)	Result (dBuV/m)	Limit (dBuV/m)	Margin (dB)	Detector	Height (cm)	Degree (deg.)	Remark
1	18448.000	6.76	37.76	44.52	74.00	-29.48	peak			
2	18448.000	-3.86	37.76	33.90	54.00	-20.10	AVG			
3	18763.000	8.29	37.76	46.05	74.00	-27.95	peak			
4	18763.000	-1.20	37.76	36.56	54.00	-17.44	AVG			
5	20849.000	8.10	39.07	47.17	74.00	-26.83	peak			
6	20849.000	-2.00	39.07	37.07	54.00	-16.93	AVG			
7	22235.000	8.53	39.29	47.82	74.00	-26.18	peak			
8	22235.000	-1.60	39.29	37.69	54.00	-16.31	AVG			
9	23705.000	7.82	39.70	47.52	74.00	-26.48	peak			
10	23705.000	-2.60	39.70	37.10	54.00	-16.90	AVG			
11	24244.000	8.82	39.96	48.78	74.00	-25.22	peak			
12	24244.000	-1.50	39.96	38.46	54.00	-15.54	AVG			



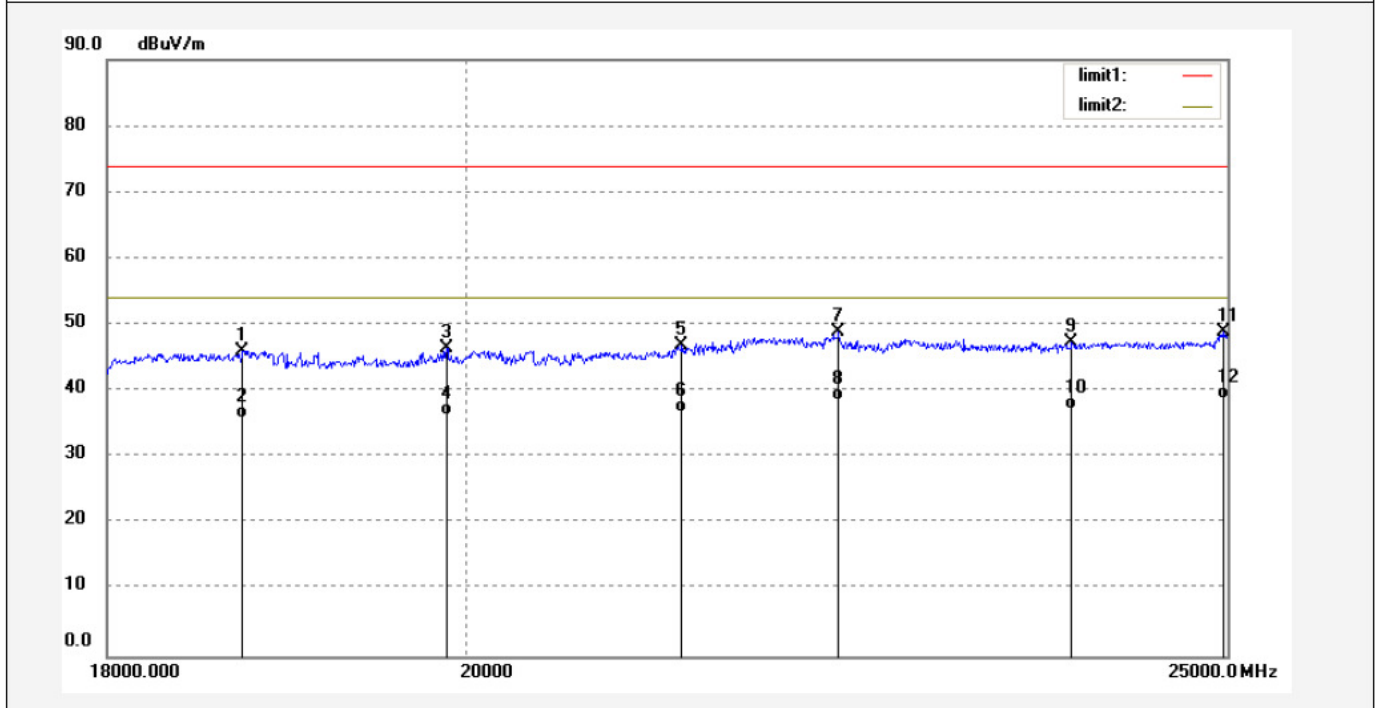
**ACCURATE TECHNOLOGY CO., LTD.**

F1,Bldg,A,Changyuan New Material Port Keyuan Rd,  
Science & Industry Park,Nanshan Shenzhen,P.R.China

Site: 2# Chamber  
Tel:+86-0755-26503290  
Fax:+86-0755-26503396

Job No.: FRANK #1048	Polarization: Horizontal
Standard: FCC PK	Power Source: AC 120V/60Hz
Test item: Radiation Test	Date: 17/02/22/
Temp.( C)/Hum.(%) 23 C / 48 %	Time: 10/02/15
EUT: Interactive Flat Panel	Engineer Signature:
Mode: Memory Playing	Distance: 3m
Model: ETX-7500UHD	
Manufacturer: XIAMEN PRIMA	

Note: Report NO.:ATE20170112



No.	Freq. (MHz)	Reading (dBuV/m)	Factor (dB)	Result (dBuV/m)	Limit (dBuV/m)	Margin (dB)	Detector	Height (cm)	Degree (deg.)	Remark
1	18735.000	8.81	37.27	46.08	74.00	-27.92	peak			
2	18735.000	-1.30	37.27	35.97	54.00	-18.03	AVG			
3	19890.000	8.22	38.21	46.43	74.00	-27.57	peak			
4	19890.000	-1.90	38.21	36.31	54.00	-17.69	AVG			
5	21304.000	8.45	38.48	46.93	74.00	-27.07	peak			
6	21304.000	-1.80	38.48	36.68	54.00	-17.32	AVG			
7	22312.000	9.17	39.67	48.84	74.00	-25.16	peak			
8	22312.000	-1.00	39.67	38.67	54.00	-15.33	AVG			
9	23887.000	6.96	40.34	47.30	74.00	-26.70	peak			
10	23887.000	-3.00	40.34	37.34	54.00	-16.66	AVG			
11	24972.000	9.21	39.75	48.96	74.00	-25.04	peak			
12	24972.000	-1.00	39.75	38.75	54.00	-15.25	AVG			



**ACCURATE TECHNOLOGY CO., LTD.**

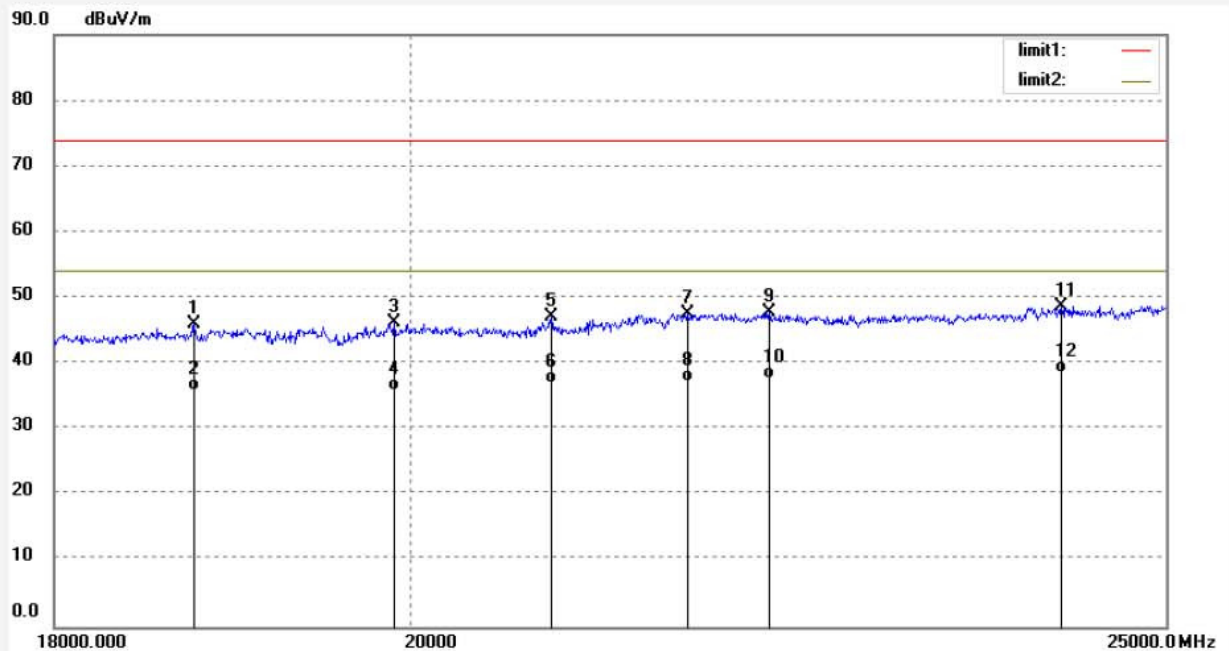
F1,Bldg,A,Changyuan New Material Port Keyuan Rd,  
Science & Industry Park,Nanshan Shenzhen,P.R.China

Site: 2# Chamber  
Tel:+86-0755-26503290  
Fax:+86-0755-26503396

Job No.: FRANK #1049  
Standard: FCC PK  
Test item: Radiation Test  
Temp.( C)/Hum.(%) 23 C / 48 %  
EUT: Interactive Flat Panel  
Mode: Memory Playing  
Model: ETX-7500UHD  
Manufacturer: XIAMEN PRIMA

Polarization: Vertical  
Power Source: AC 120V/60Hz  
Date: 17/02/22/  
Time: 10/13/10  
Engineer Signature:  
Distance: 3m

Note: Report NO.:ATE20170112



No.	Freq. (MHz)	Reading (dBuV/m)	Factor (dB)	Result (dBuV/m)	Limit (dBuV/m)	Margin (dB)	Detector	Height (cm)	Degree (deg.)	Remark
1	18763.000	8.29	37.76	46.05	74.00	-27.95	peak			
2	18763.000	-1.90	37.76	35.86	54.00	-18.14	AVG			
3	19904.000	7.32	38.83	46.15	74.00	-27.85	peak			
4	19904.000	-2.90	38.83	35.93	54.00	-18.07	AVG			
5	20849.000	8.10	39.07	47.17	74.00	-26.83	peak			
6	20849.000	-2.00	39.07	37.07	54.00	-16.93	AVG			
7	21710.000	8.28	39.24	47.52	74.00	-26.48	peak			
8	21710.000	-1.90	39.24	37.34	54.00	-16.66	AVG			
9	22235.000	8.53	39.29	47.82	74.00	-26.18	peak			
10	22235.000	-1.60	39.29	37.69	54.00	-16.31	AVG			
11	24244.000	8.82	39.96	48.78	74.00	-25.22	peak			
12	24244.000	-1.30	39.96	38.66	54.00	-15.34	AVG			

## 6. PHOTOGRAPHS

### 6.1.Photos of Radiated Emission Measurement

Below 1G



Above 1G





### 6.2. Photo of Conducted Emission Measurement

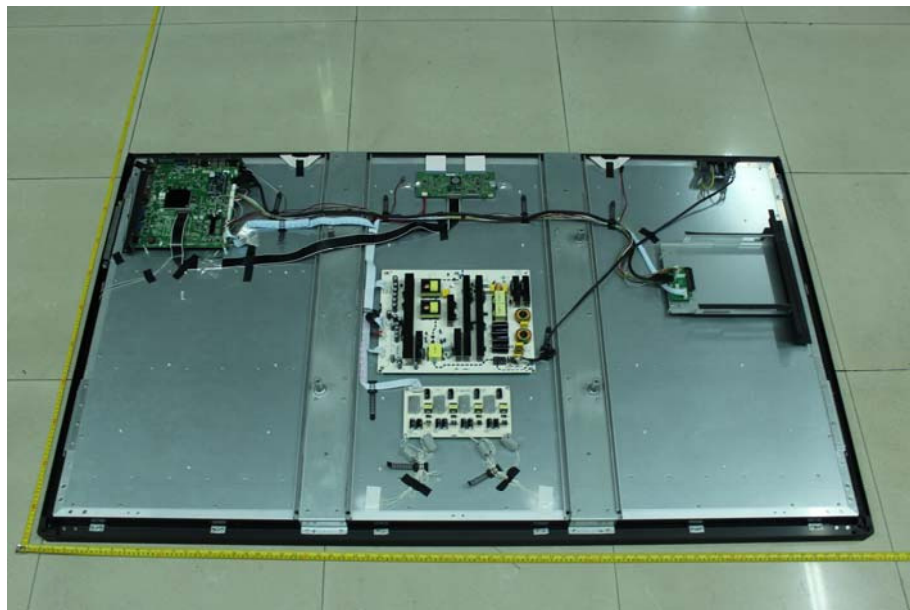


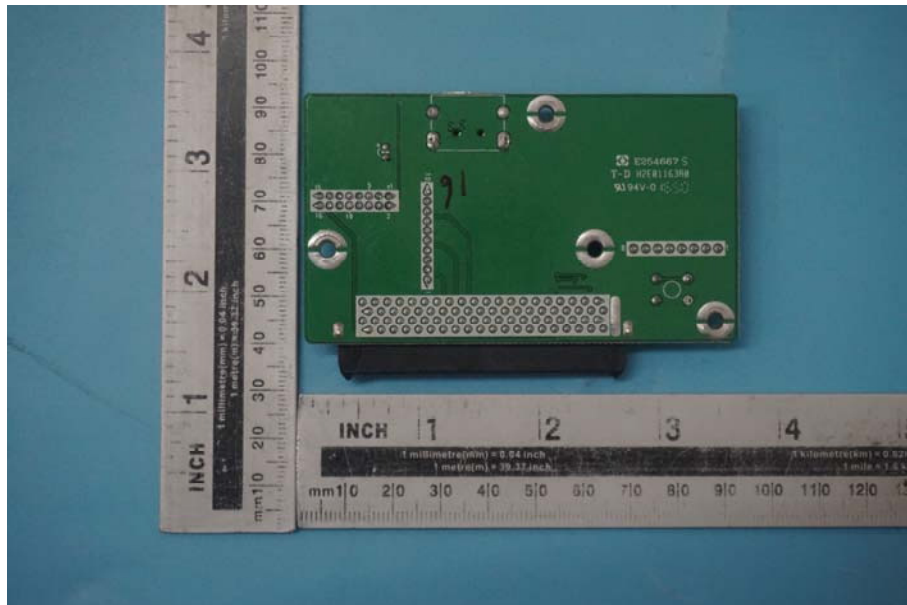
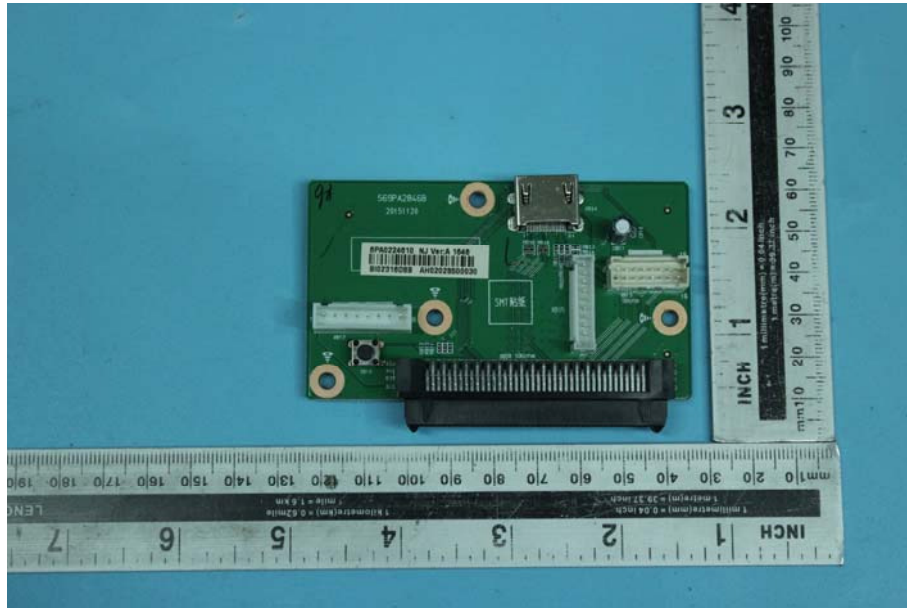
### 6.3. Photo of EUT

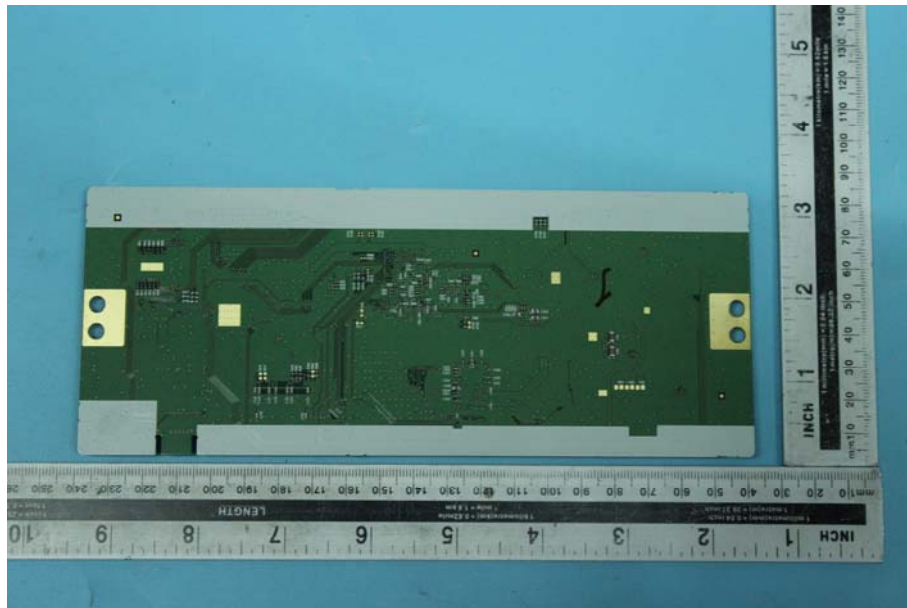


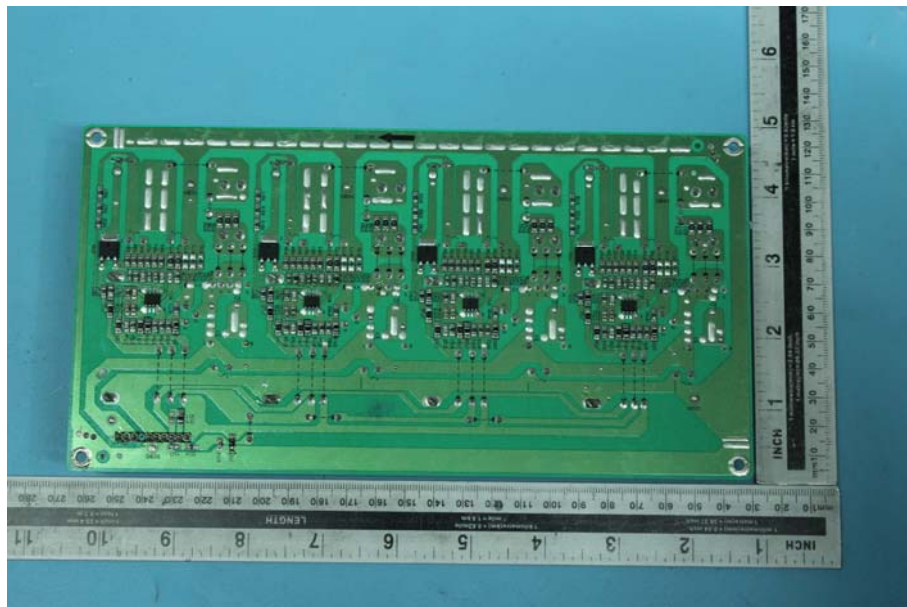
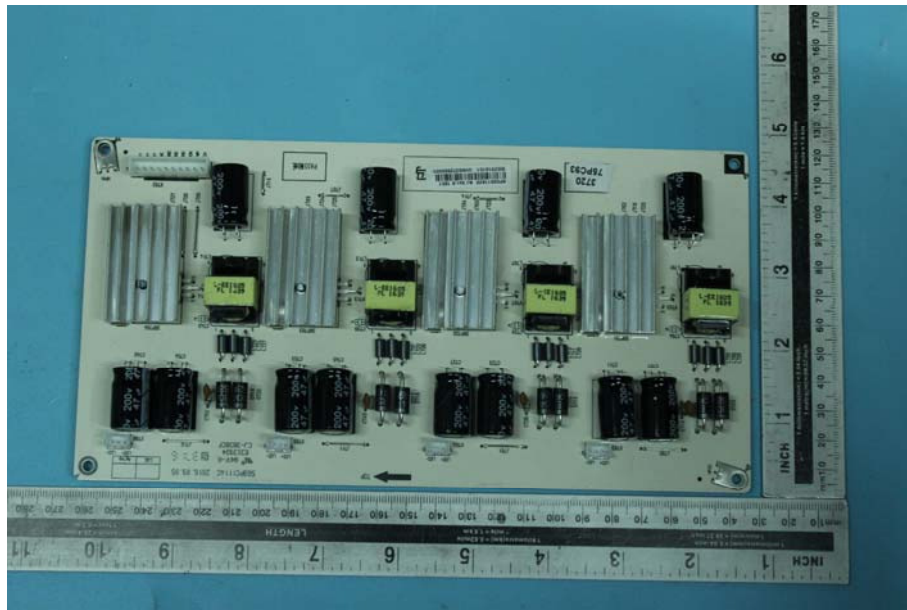


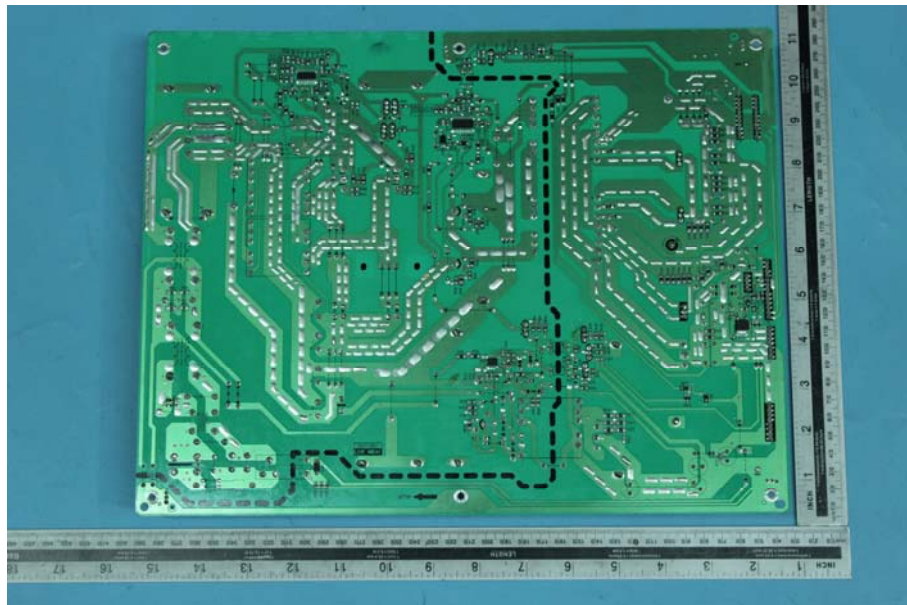
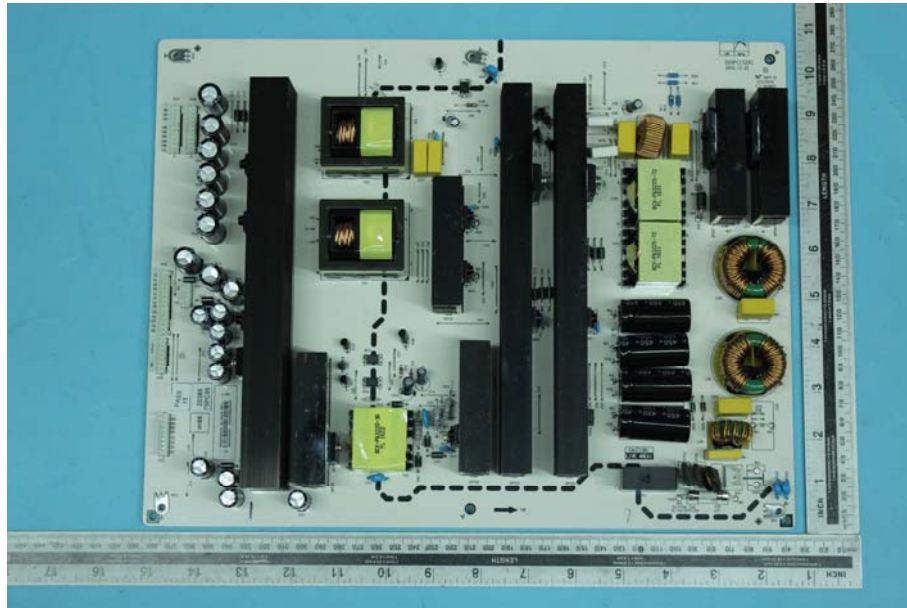




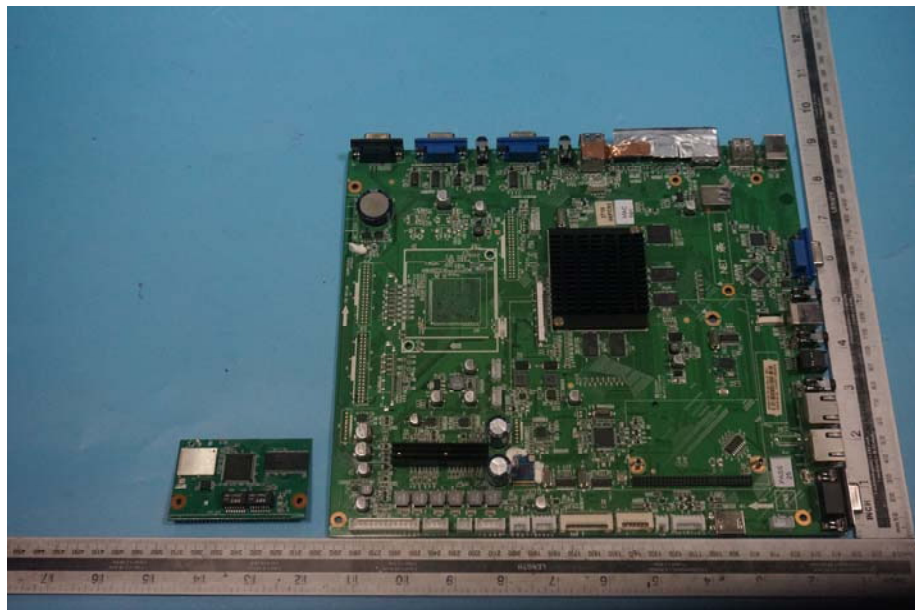


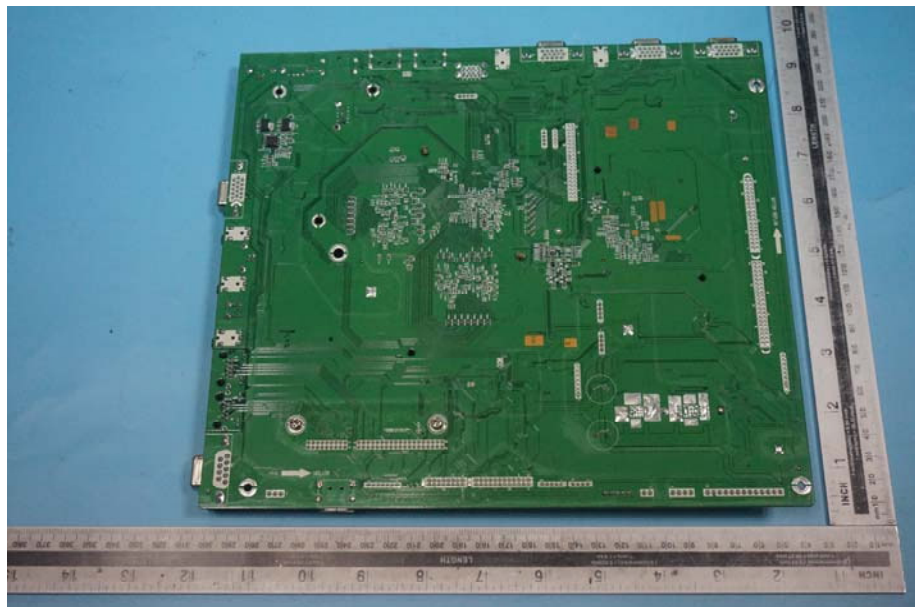


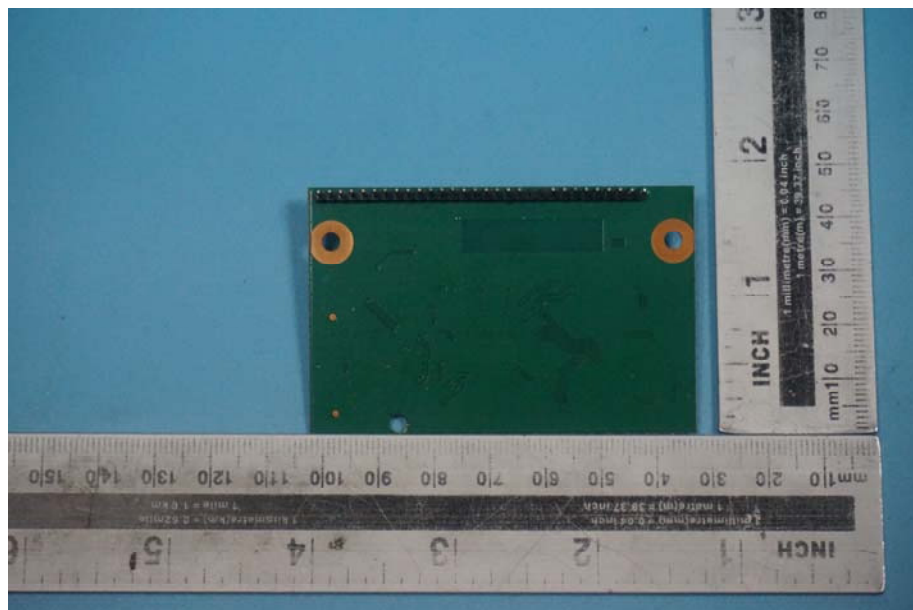
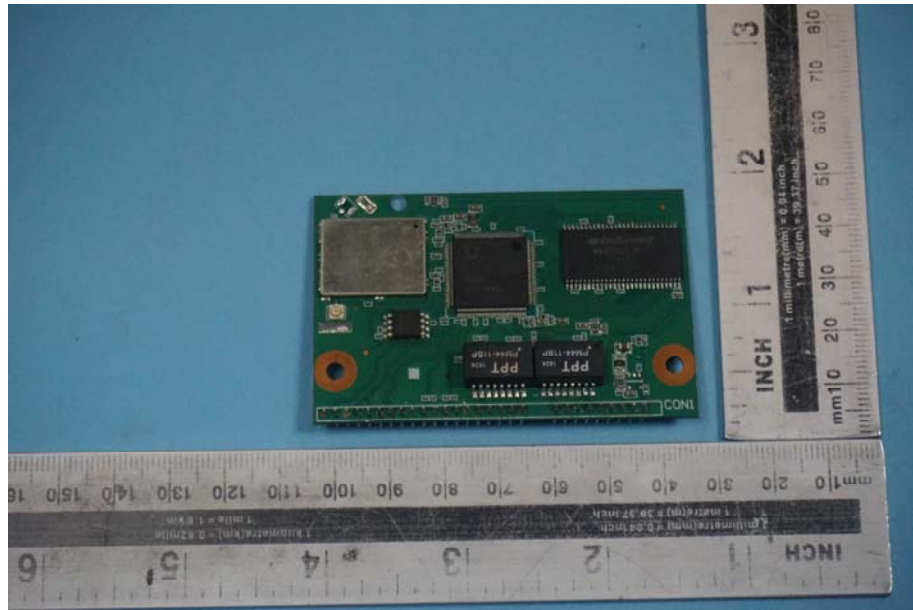












**\*\*\*\*\* End of Test Report \*\*\*\*\***