

# Bluetooth Transmitter

## User Manual

**Please read this manual carefully before use.**

### Product Description

This bluetooth transmitter is designed to effortlessly adds bluetooth functionality to your TV/laptops/CD player /iPods/MP3/MP4 players and other stereo devices that lack bluetooth functionality. Connect them with the 3.5mm audio cable,the transmitter broadcasts high quality music or stereo sound from HDTV to bluetooth headphones, speakers and bluetooth receivers.So you can privately watch late night TV shows,movies and play games without disturbing or waking up anyone sleeping near you.Without wires,all in a simple and convenient.

### Product Diagram



1. Power ON/OFF button
2. Bluetooth indicator light
3. Micro USB charge port
4. 3.5mm aux in port

### Standard accessories

1. Bluetooth transmitter x1
2. USB charging cable x1
3. 3.5mm audio cable x1
4. User Manual x1

## Specifications

Bluetooth specification: V2.1+EDR

Bluetooth operating distance: 30 feet

Micro USB charge input: 5V/1A

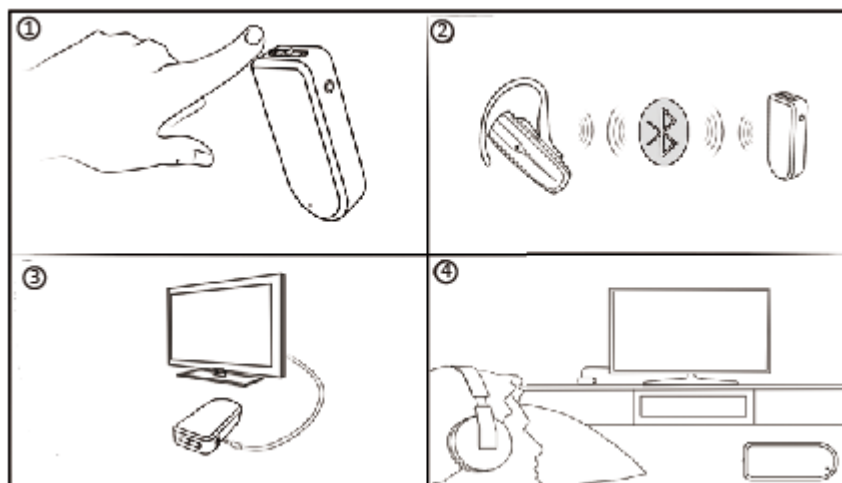
## Operating Guide

Step1: Switch on the bluetooth transmitter,the bluetooth indicator flashes means it's ready to pair.

Step2: Power on your bluetooth headphone to start pairing,when successfully paired,the bluetooth indicator will illuminate blue.

Step3: Connect the Bluetooth Transmitter with your TV via 3.5 mm audio cable.

Step4: Now you can enjoy your privately late night TV shows without disturbing anyone sleeping near you.



## Remark

1. If old television have no 3.5mm aux in port,a RCA cable will be need .
2. It will connect to the last paired device automatically when turned on next time.(Turn on the bluetooth of your smart device first)
- 3.While connected to your TV,keep the transmitter powered with any USB adapter and never worry about recharging the battery again.

This device complies with Part 15 of the FCC Rules. Operation is subject to the following two conditions:

(1) this device may not cause harmful interference, and (2) this device must accept any interference received, including interference that may cause undesired operation.

changes or modifications not expressly approved by the party responsible for compliance could void the user's authority to operate the equipment.

This equipment has been tested and found to comply with the limits for a Class B digital device, pursuant to Part 15 of the FCC Rules. These limits are designed to provide reasonable protection against harmful interference in a residential installation. This equipment generates, uses and can radiate radio frequency energy and, if not installed and used in accordance with the instructions, may cause harmful interference to radio communications. However, there is no guarantee that interference will not occur in a particular installation.

If this equipment does cause harmful interference to radio or television reception, which can be determined by turning the equipment off and on, the user is encouraged to try to correct the interference by one or more of the following measures:

- Reorient or relocate the receiving antenna.
- Increase the separation between the equipment and receiver.
- Connect the equipment into an outlet on a circuit different from that to which the receiver is connected.
- Consult the dealer or an experienced radio/TV technician for help.