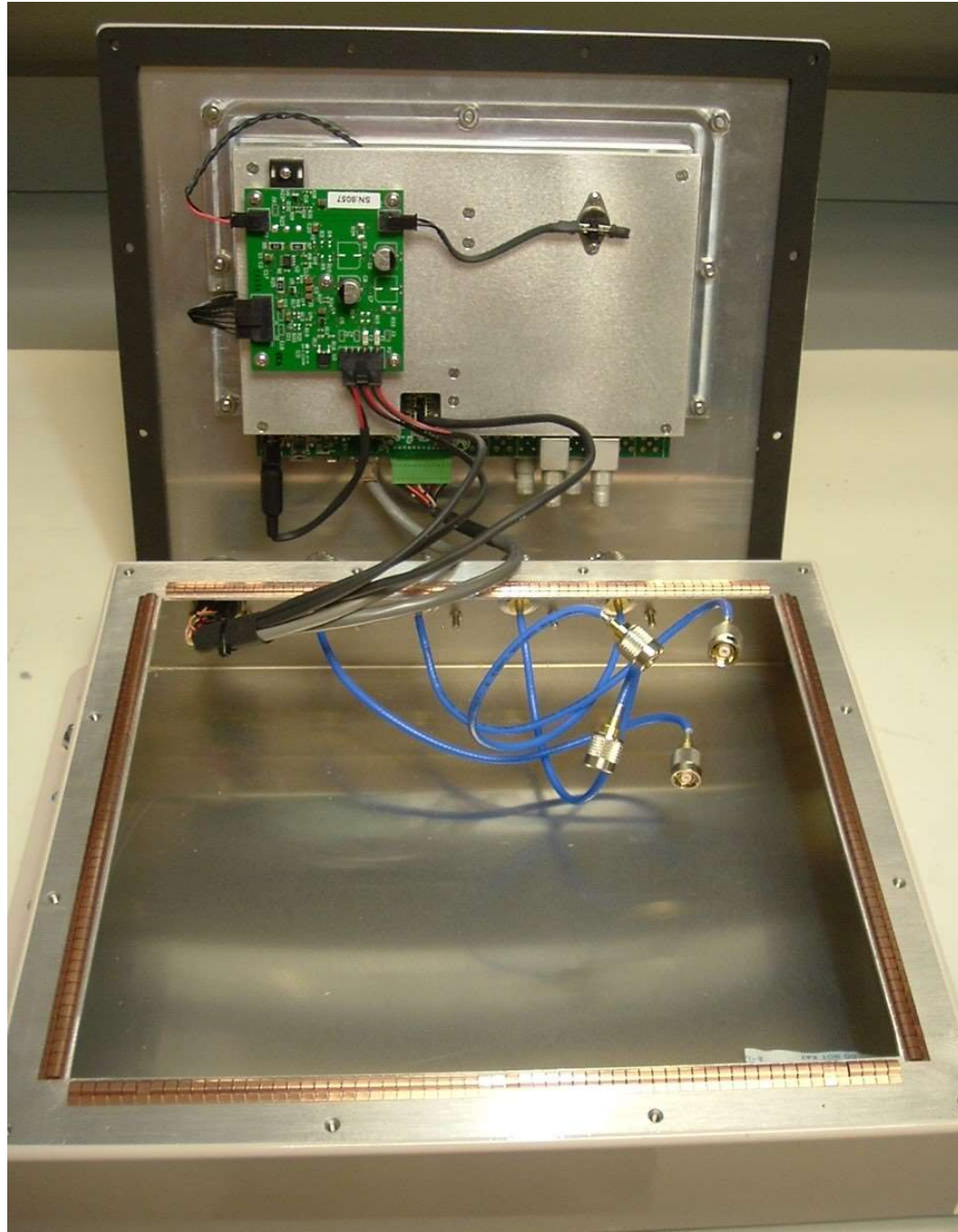
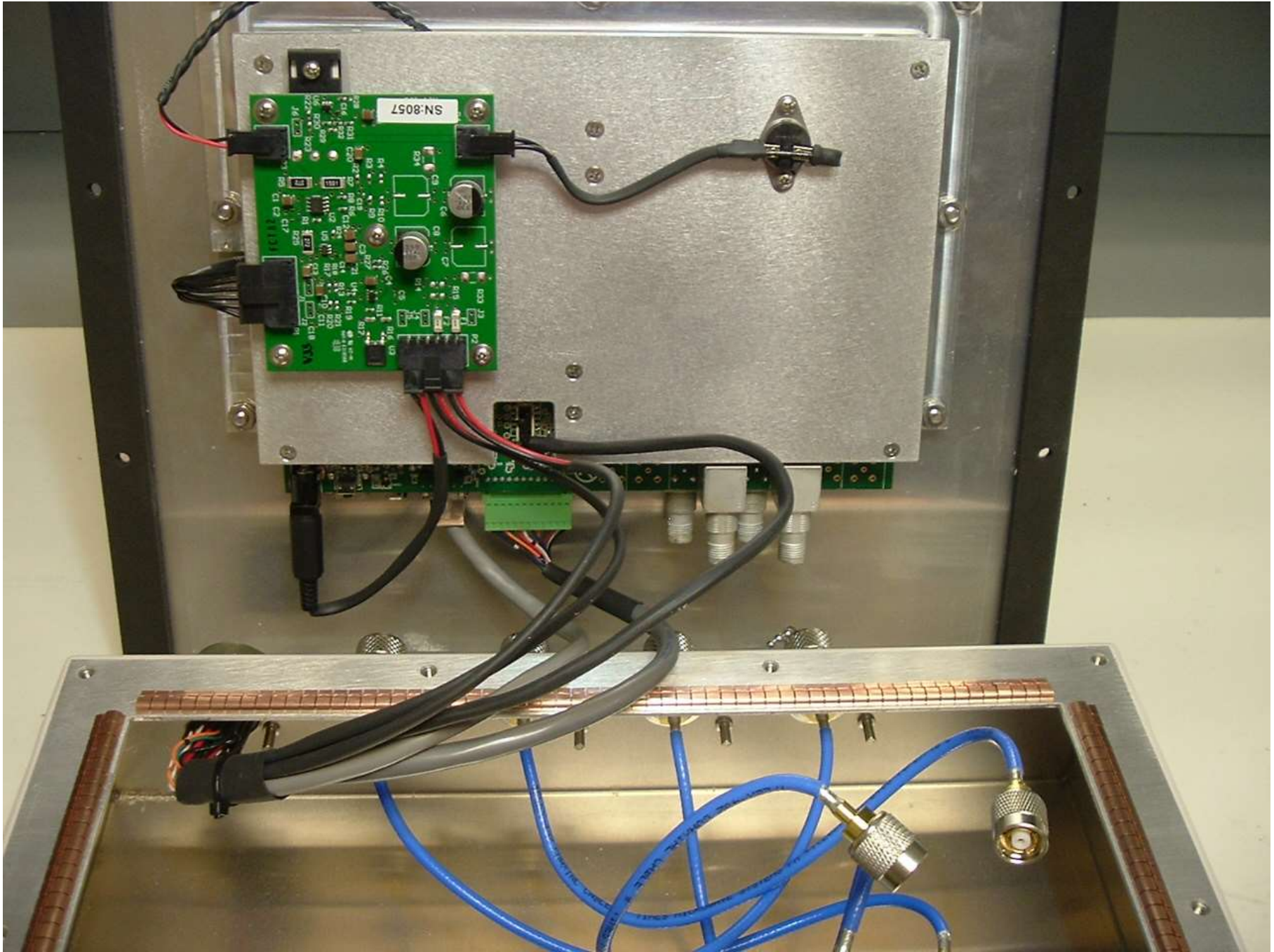


Internal Photo #1: 6204 Chassis Interior – Showing All Interior Cabling Connections, as Lid is Initially Opened

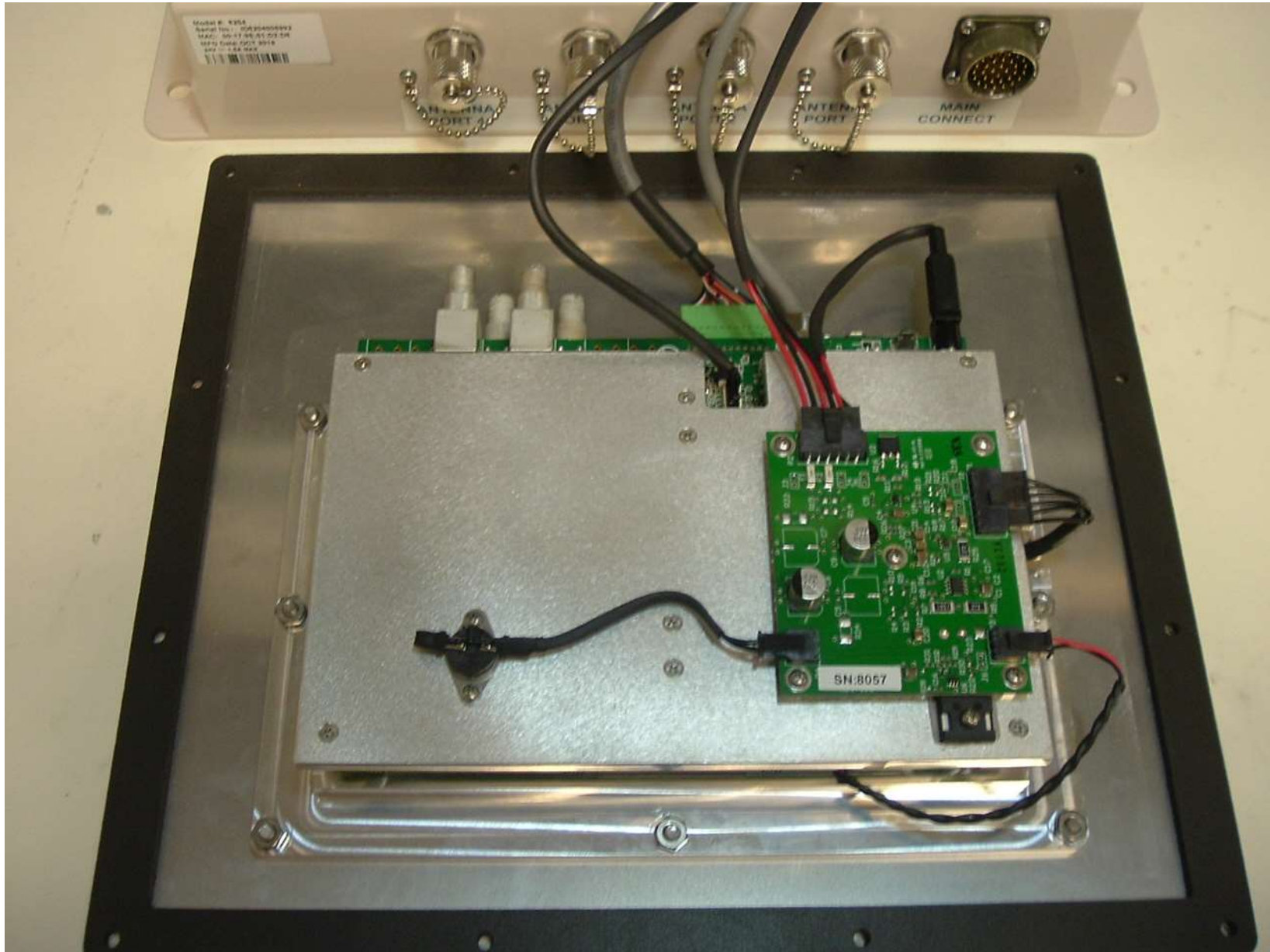


Internal Photo #2: 6204 Chassis Interior – (RF Cables Disconnected)





Internal Photo #3: 6204 Chassis Interior



Internal Photo #4: 6204 Bottom Shield Cover, Daughter PCB Assembly & Interconnect Wiring





Internal Photo #5: 6204 Bottom Shield Cover, Daughter PCB Assembly & Interconnect Wiring (Close-Up View)

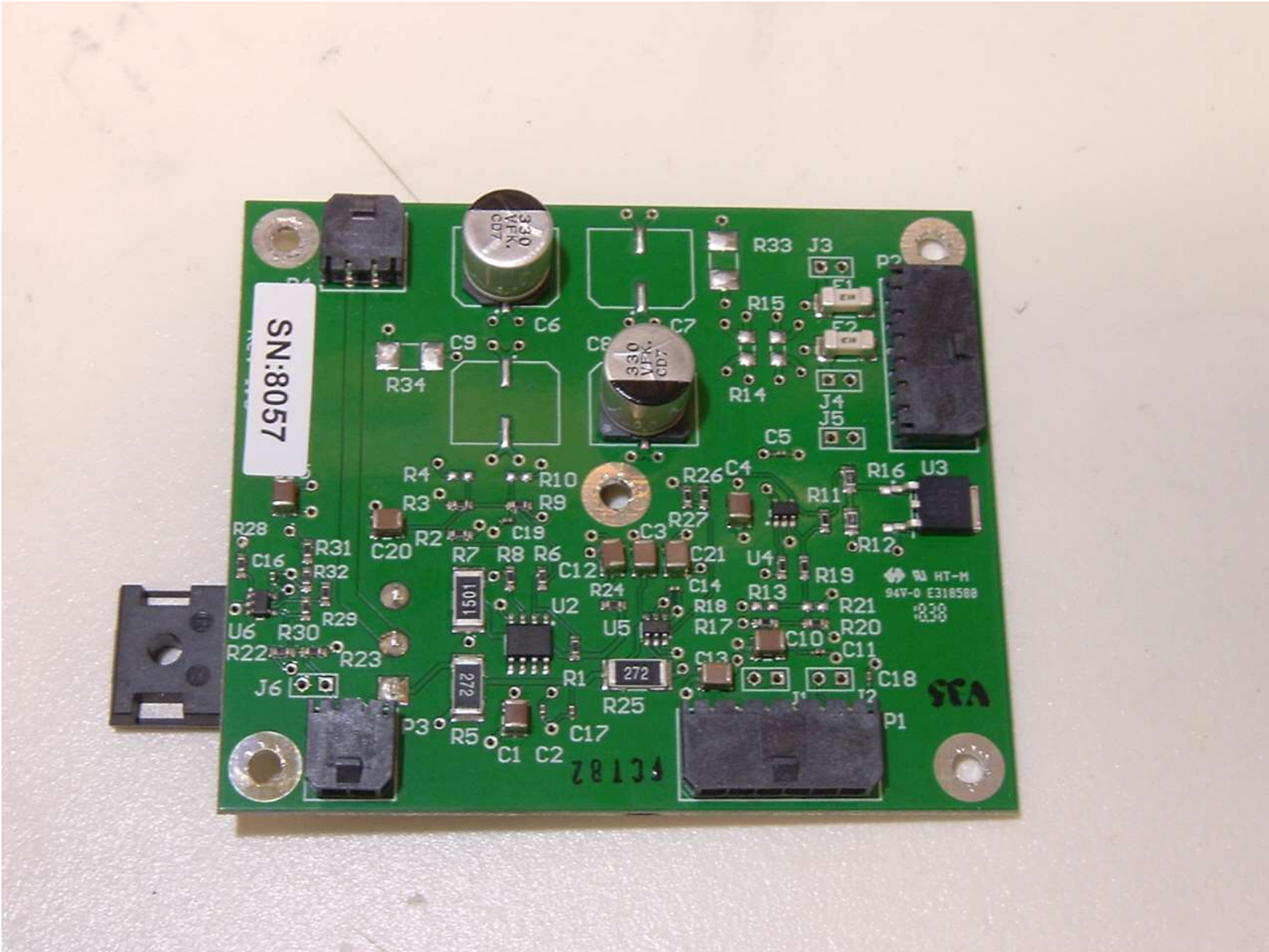


Internal Photo #6: 6204 Bottom Shield Cover - Daughter PCB Assembly Removed



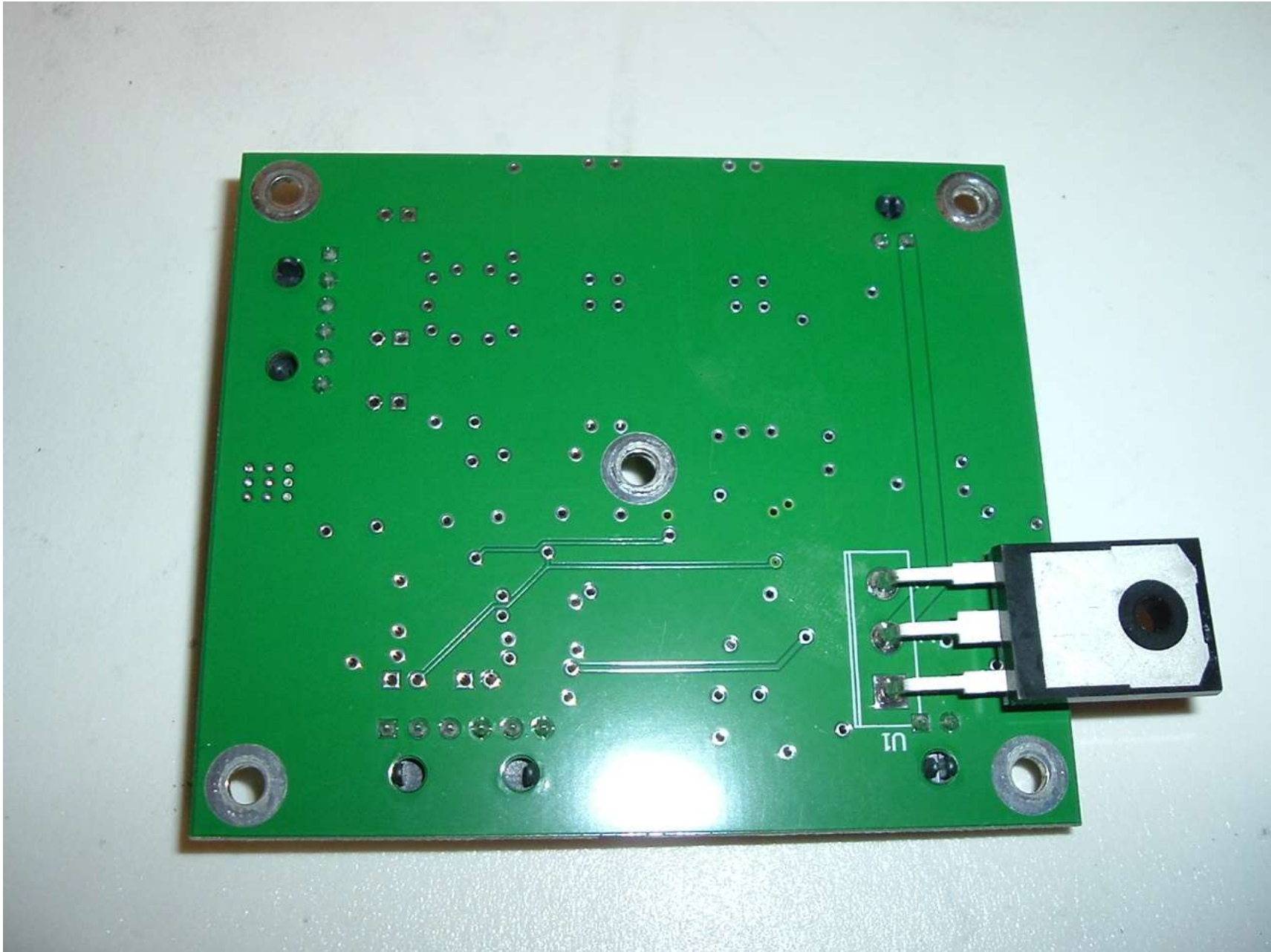


Internal Photo #7: 6204 PCB Assembly Bottom (Bottom Shield Cover Removed, PCBA Still Mounted)



Internal Photo #8: 6204 Daughter PCBA PCB Top Side



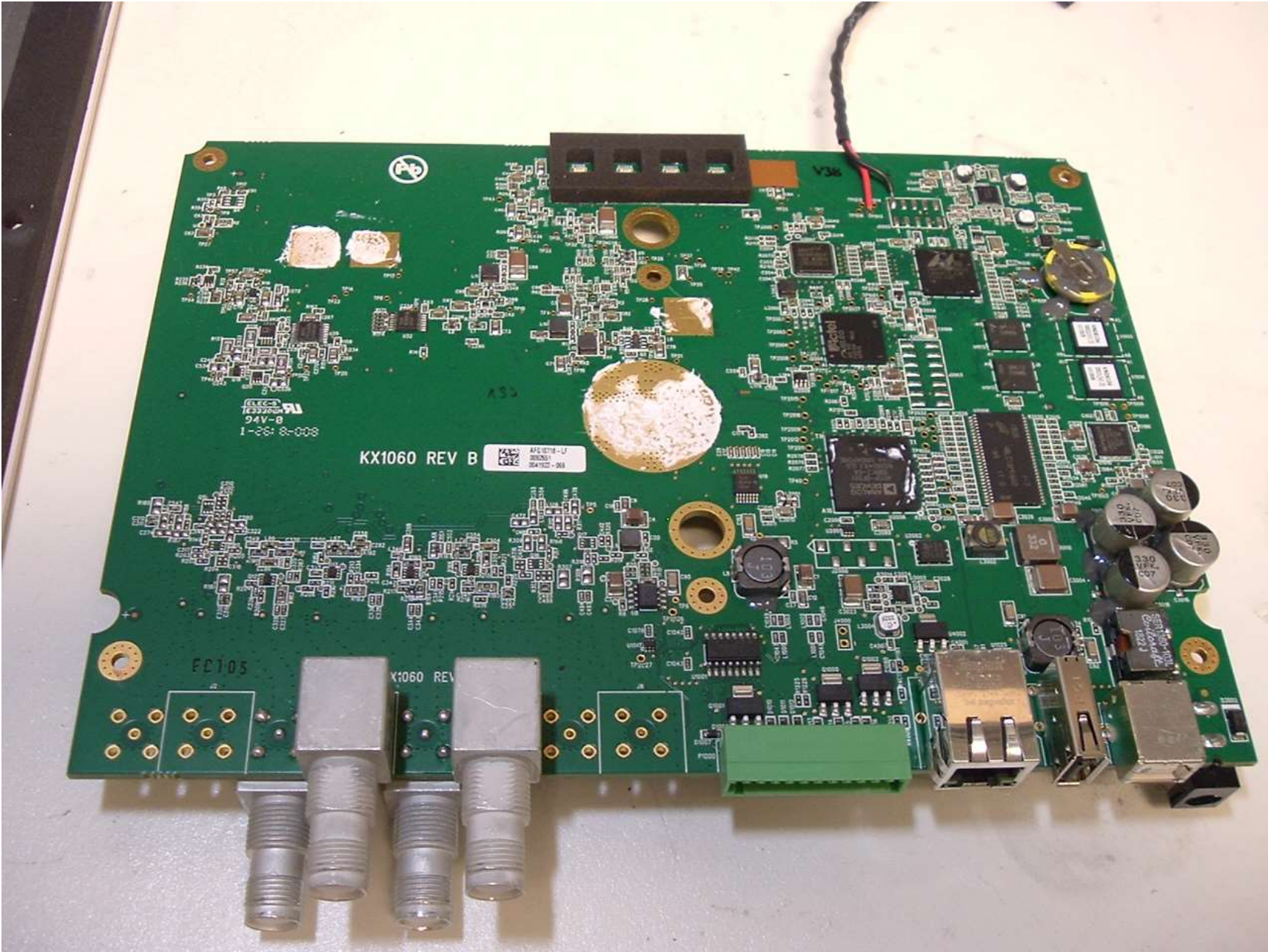


Internal Photo #9: 6204 Daughter PCBA Bottom Side



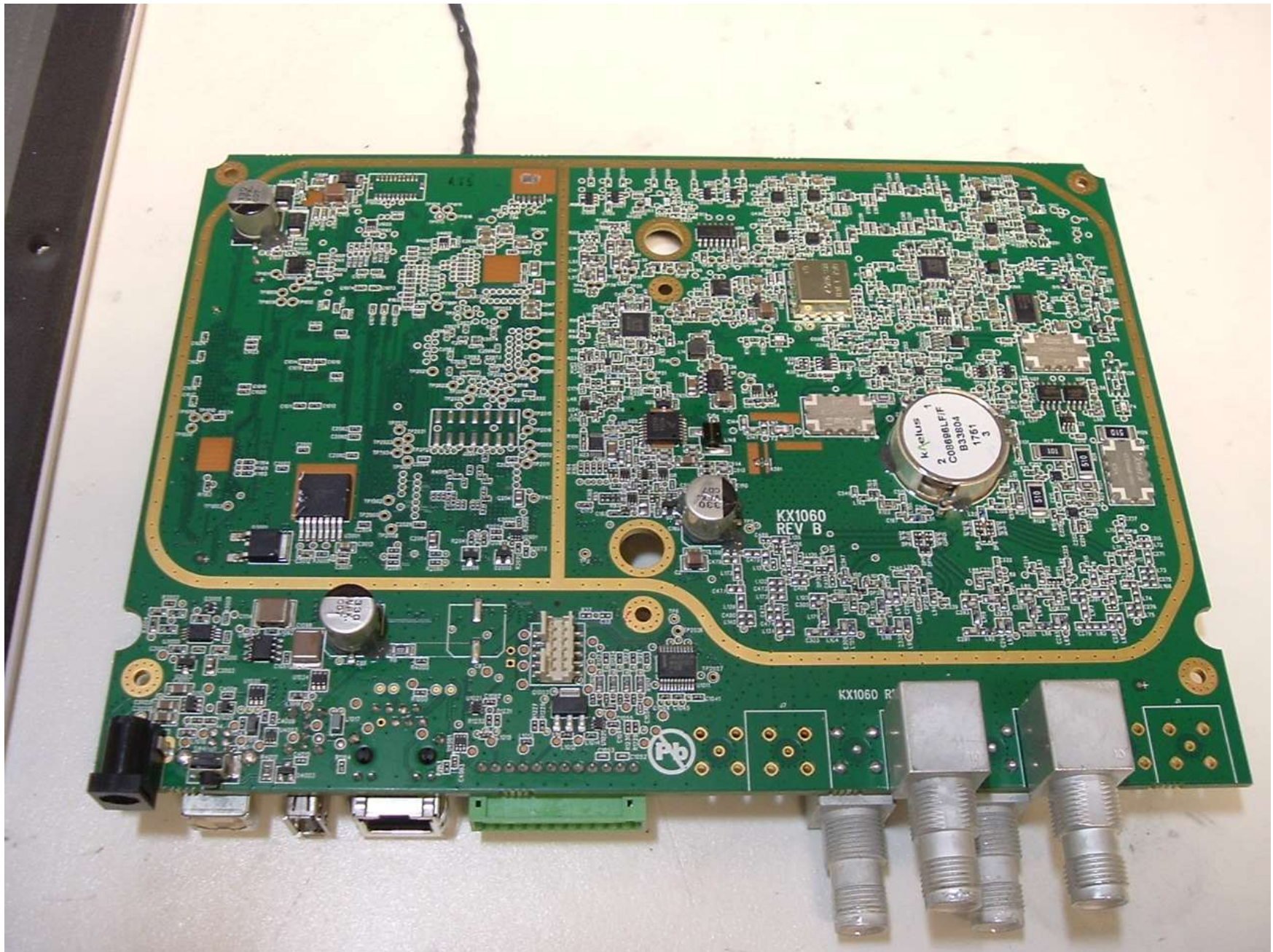
Internal Photo #10: 6204 Bottom Shielding Cover – Interior





Internal Photo #11: 6204 Reader PCB Assembly Top-Side



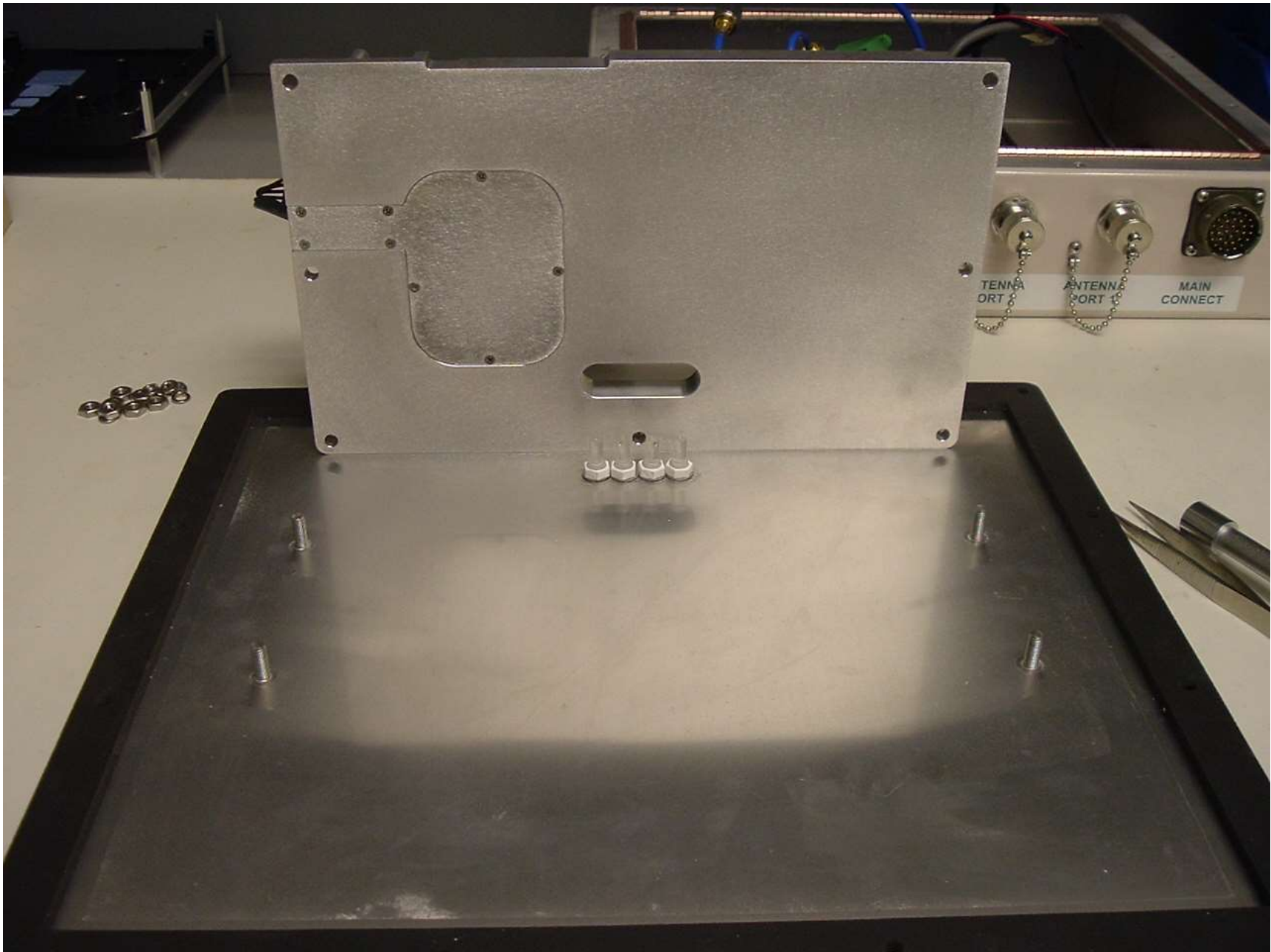


Internal Photo #12: 6204 Reader PCB Assembly Bottom-Side



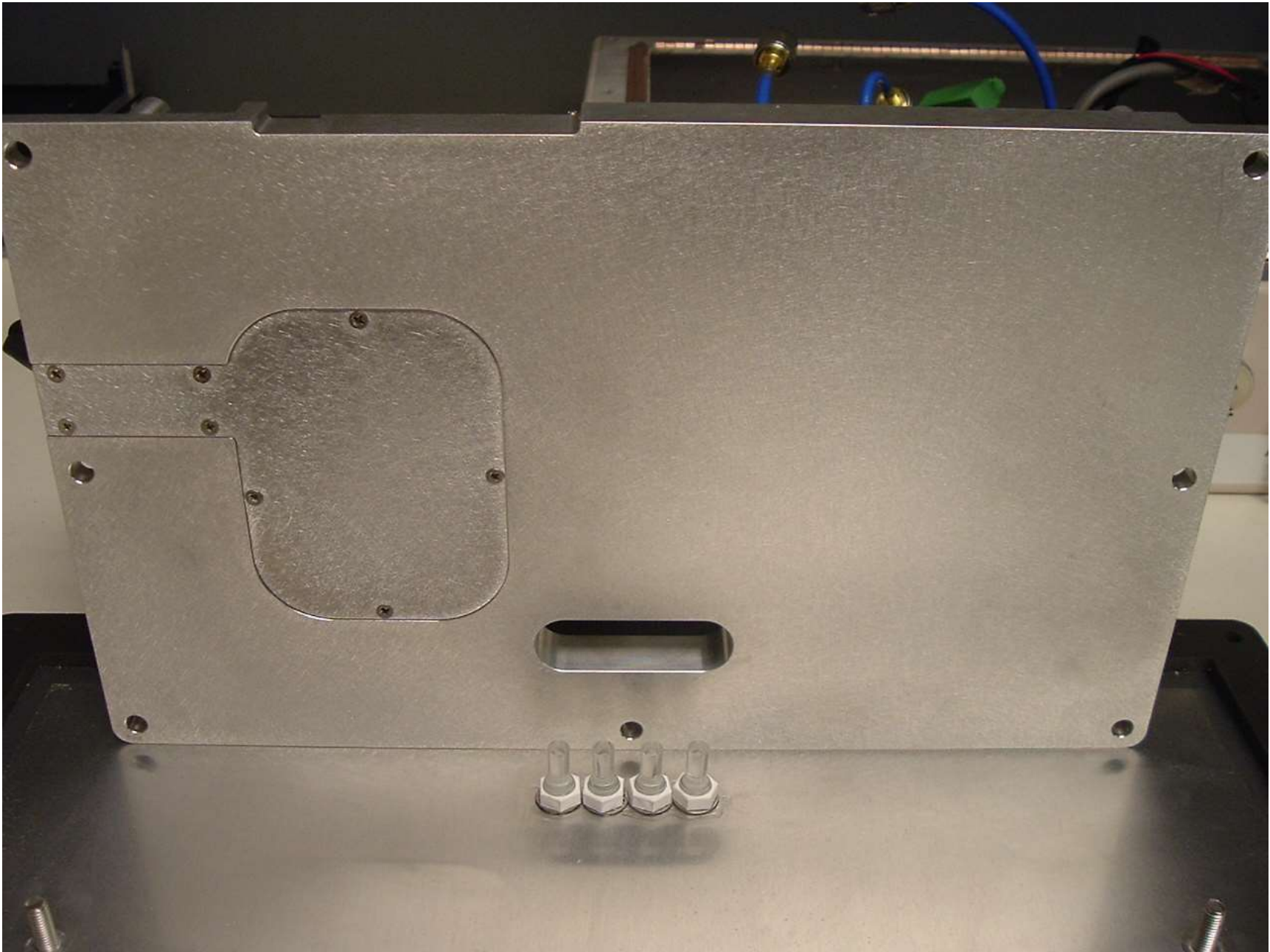


Internal Photo #13: 6204 Assembly Base Plate Mounted to Interior Surface of Enclosure Lid



Internal Photo #14: 6204 Assembly Base Plate Removed From Interior Surface of Enclosure Lid



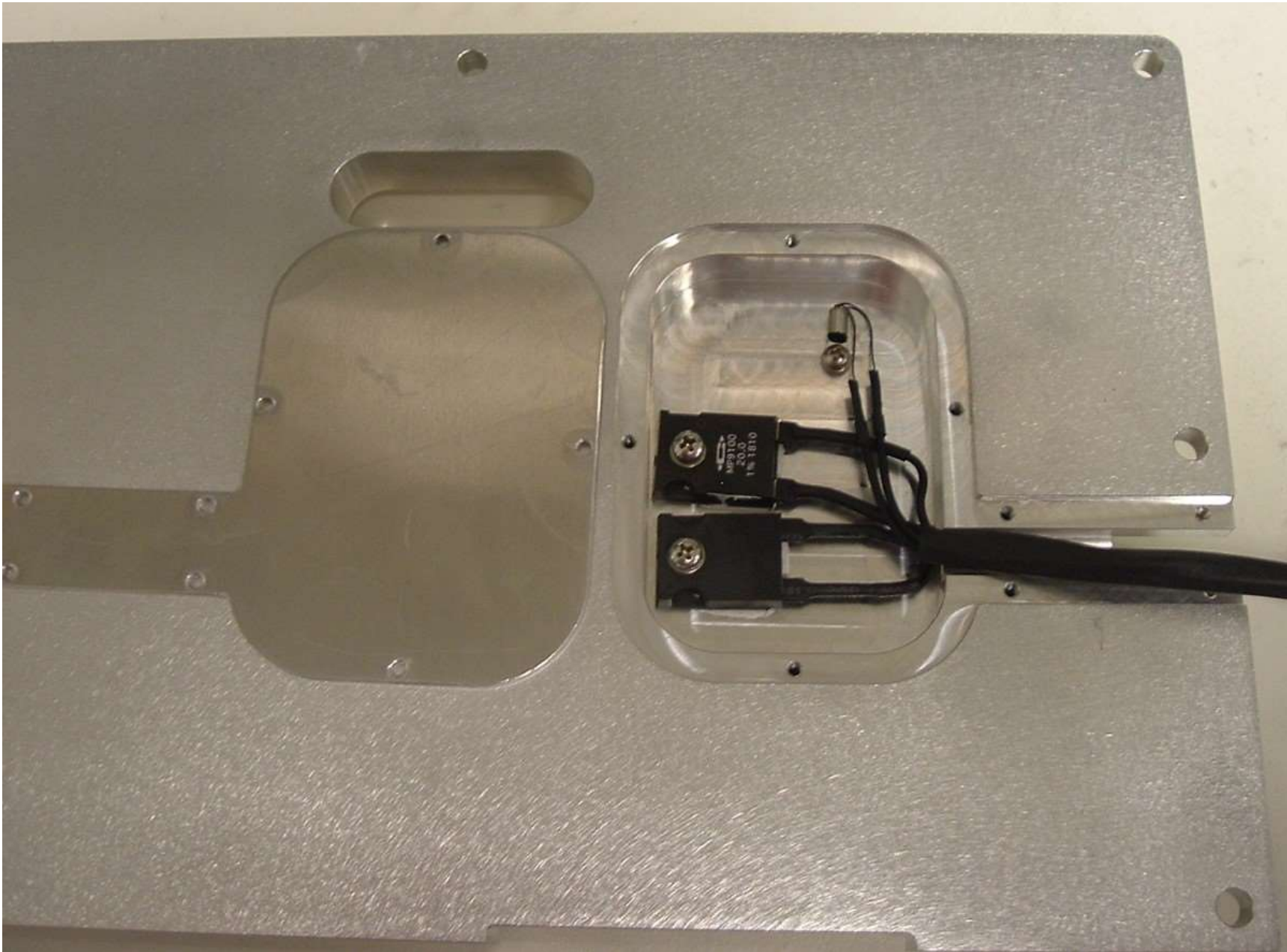


Internal Photo #15: 6204 Bottom View of Assembly Base Plate



Internal Photo #16: 6204 Bottom View of Assembly Base Plate





Internal Photo #17: 6204 Bottom View of Assembly Base Plate – Cover Removed from Bottom Compartment