



**TEST REPORT**  
**FCC ID: 2AKN4-ZHSPS01**  
**For**  
**SHENZHEN JAME TECHNOLOGY CORP.,LTD**  
selfie robot

Model No. : ZH-SPS01, ZH-SPD01, ZH-SPD02, ZH-SPSS01, ZH-SPG01,  
XSM05, XSM06, XSM07, XSM08

Trade name : N/A

Prepared for : SHENZHEN JAME TECHNOLOGY CORP.,LTD  
9th floor, Block B, No.9 Building, Baoneng High-Tech Park,  
Address : Qingxiang Rd, Qinghu Industrial Park, Longhua New District,  
Shenzhen, China

Prepared by : Shenzhen Alpha Product Testing Co., Ltd.  
Address : Building B, East Area of Nanchang Second, Industrial Zone,  
Gushu 2nd Road, Bao'an, Shenzhen, China

Report No. : T1862437 01

Date of Receipt : November 29, 2016

Date of Test : November 29-December 26, 2016

Date of Report : December 26, 2016

Version Number : REV0

## TABLE OF CONTENT

Description	Page
<b>1 General Information-----</b>	<b>4</b>
1.1 Description of Device (EUT) -----	4
1.2 Description of Test Facility -----	5
<b>2 EMC Equipment List -----</b>	<b>6</b>
<b>3 Test Procedure -----</b>	<b>7</b>
<b>4 Summary of Measurement -----</b>	<b>8</b>
4.1 Summary of test result -----	8
4.2 Test connection -----	8
4.3 Assistant equipment used for test -----	8
4.4 Test mode -----	9
4.5 Test Conditions -----	9
4.6 Measurement Uncertainty (95% confidence levels, k=2) -----	9
<b>5 Spurious Emission -----</b>	<b>10</b>
5.1 Radiation Emission -----	10
5.2 Radiation Emission Limits(15.209&249) -----	10
5.3 Test Setup -----	11
5.4 Test Procedure -----	13
5.5 Test Equipment Setting For emission test Result. -----	13
5.6 Test Condition -----	14
5.7 Test Result -----	14
<b>6 POWER LINE CONDUCTED EMISSION -----</b>	<b>20</b>
6.1 Conducted Emission Limits(15.207) -----	20
6.2 Test Setup -----	20
6.3 Test Procedure -----	21
6.4 Test Results -----	21
<b>7 Bandwidth -----</b>	<b>24</b>
7.1 Test limit -----	24
7.2 Method of measurement -----	24
7.3 Test Setup -----	24
7.4 Test Results -----	24
<b>8 Antenna Requirement -----</b>	<b>27</b>
8.1 Standard Requirement -----	27
8.2 Antenna Connected Construction -----	27
8.3 Result -----	27
<b>9 Photographs of Test Setup -----</b>	<b>28</b>
9.1 Photos of Radiated emission -----	28
9.2 Photos of Conduction emission -----	29
<b>10 Photographs of EUT -----</b>	<b>30</b>

# DECLARATION

Applicant : SHENZHEN JAME TECHNOLOGY CORP.,LTD  
 Manufacturer : Dongguan Ziho Electronic Technology Co., Ltd.  
 Product : selfie robot  
 (A)Model No. : ZH-SPS01, ZH-SPD01, ZH-SPD02, ZH-SPSS01,  
 ZH-SPG01, XSM05, XSM06, XSM07, XSM08  
 (B)Trade Name : N/A  
 (C)Power supply : DC 3.7V from battery, DC 5V From USB Port

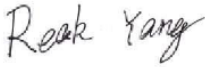
Measurement Standard Used:

**FCC Rules and Regulations Part 15 Subpart C Section 15.249: 2016, ANSI C63.10-2013**

The device described above is tested by Shenzhen Alpha Product Testing Co., Ltd. to determine the maximum emission levels emanating from the device. The maximum emission levels are compared to the FCC Part 15 Subpart B Class B limits both conducted and radiated emissions. The test results are contained in this test report and Shenzhen Alpha Product Testing Co., Ltd. is assumed of full responsibility for the accuracy and completeness of these tests.

After the test, our opinion is that EUT compliance with the requirement of the above standards.

This report applies to above tested sample only. This report shall not be reproduced in parts without written approval of Shenzhen Alpha Product Testing Co., Ltd.

Tested by (name + signature).....: Reak Yang  
 Test Engineer 

Approved by (name + signature).....: Simple Guan  
 Project Manager 

Date of issue..... : December 26, 2016

# 1 General Information

## 1.1 Description of Device (EUT)

EUT	: selfie robot
Model No.	: ZH-SPS01, ZH-SPD01, ZH-SPD02, ZH-SPSS01, ZH-SPG01, XSM05, XSM06, XSM07, XSM08
DIFF.	: There is no difference between all the models, except the appearance color and model No., so this report performs the model ZH-SPS01.
Trade mark	: N/A
Power supply	: DC 3.7V from battery, DC 5V From USB Port
Radio Technology	: Bluetooth 4.0 BLE
Operation frequency	: 2402-2480MHz
Channel No.	40 Channels
Channel Separation	: 2MHz
Modulation	: GFSK
Antenna Type	: PCB Antenna, max gain 0dBi.
Software Version	: N/A
Hardware Version	: N/A
Applicant	: SHENZHEN JAME TECHNOLOGY CORP.,LTD
Address	: 9th floor, Block B, No.9 Building, Baoneng High-Tech Park, Qingxiang Rd, Qinghu Industrial Park, Longhua New District, Shenzhen, China
Manufacturer	: Dongguan Zihoelectronic Technology Co., Ltd.
Address	: Jame Science and Technology Park, Xiaob No.2 Road, Guanjingtou Village, Dongguan, Guangdong Province

## 1.2 Description of Test Facility

Shenzhen Alpha Product Testing Co., Ltd.

Building B, East Area of Nanchang Second, Industrial Zone, Gushu 2nd  
Road, Bao'an, Shenzhen, China

March 25, 2015 File on Federal Communication Commission  
Registration Number: 203110

July 18, 2014 Certificated by IC  
Registration Number: 12135A

## 2 EMC Equipment List

Equipment	Manufacture	Model No.	Serial No.	Due cal.	Cal Interval
3m Semi-Anechoic	CHENYU	N/A	N/A	2018.01.18	2Year
Spectrum analyzer	Agilent	E4407B	MY46185649	2017.01.16	1Year
Receiver	R&S	ESPI	101873	2017.01.16	1Year
Receiver	R&S	ESCI	101165	2017.01.16	1Year
Bilog Antenna	SCHWARZBECK	VULB 9168	VULB9168-438	2018.01.18	2Year
Horn Antenna	SCHWARZBECK	BBHA 9120 D	BBHA 9120 D(1201)	2017.01.20	2Year
L.I.S.N.#1	Schwarzbeck	NSLK8126	8126466	2017.01.16	1 Year
L.I.S.N.#2	ROHDE&SCHWARZ	ENV216	101043	2017.01.16	1 Year
Cable	Resenberger	N/A	No.1	2017.01.16	1Year
Cable	SCHWARZBECK	N/A	No.2	2017.01.16	1Year
Cable	SCHWARZBECK	N/A	No.3	2017.01.16	1Year
Pre-amplifier	HP	HP8347A	2834A00455	2017.01.18	1Year
Pre-amplifier	Agilent	8449B	3008A02664	2017.01.18	1Year
vector Signal Generator	Agilent	N5182A	MY49060042	2017.11.16	1 Year
vector Signal Generator	Agilent	E4438C	US44271917	2017.11.16	1 Year
X-series USB Peak and Average Power Sensor	Agilent	U2021XA	MY54080020	2017.11.16	1 Year
X-series USB Peak and Average Power Sensor	Agilent	U2021XA	MY54110001	2017.11.16	1 Year
Signal Analyzer	Agilent	N9020A	MY48030494	2017.11.16	1 Year

### 3 Test Procedure

**POWER LINE CONDUCTED INTERFERENCE:** The test procedure used was ANSI Standard C63.10-2013 using a 50 u H LISN. Both Lines were observed. The bandwidth of the receiver was 10kHz with an appropriate sweep speed. The ambient temperature of the EUT was 25°C with a humidity of 58%.

**RADIATION INTERFERENCE:** The test procedure used was ANSI Standard C63.10-2013 using a ANRITSU spectrum analyzer with a pre-selector. The analyzer was calibrated in dB above a micro volt at the output of the antenna. The resolution bandwidth was 100kHz and the video bandwidth was 300 kHz up to 1 GHz and 1 MHz with a video BW of 3MHz above 1 GHz. The ambient temperature of the EUT was 25°C with a humidity of 58%.

**FORMULA OF CONVERSION FACTORS:** The Field Strength at 3m was established by adding the meter reading of the spectrum analyzer (which is set to read in units of dBuV) to the antenna correction factor supplied by the antenna manufacturer and cable loss. The antenna correction factors and cable loss are stated in terms of dB. The gain of the Pre-selector was accounted for in the Spectrum Analyzer Meter Reading.

Example:

Freq (MHz) METER READING + ACF + CABLE = FS

33.20 dBuV + 10.36 dB + 0.9 dB= 44.46 dBuV/m @ 3m

**ANSI STANDARD C63.10-2013 10.1.7 MEASUREMENT PROCEDURES:** The EUT was placed on a table 80 cm high and with dimensions of 1m by 1.5m. The EUT was placed in the center of the table (1.5m side). The table used for radiated measurements is capable of continuous rotation. When an emission was found, the table was rotated to produce the maximum signal strength. At this point, the antenna was raised and lowered from 1m to 4m. The antenna was placed in both the horizontal and vertical planes. The situation was similar for the conducted measurement except that the table did not rotate. The EUT was setup as described in ANSI Standard C63.10-2013 10.1.7 with the EUT 40 cm from the vertical ground wall.

## 4 Summary of Measurement

### 4.1 Summary of test result

Test Item	Test Requirement	Standard Paragraph	Result
Spurious Emission	FCC PART 15: 2016	Section 15.249&15.209	Compliance
Conduction Emission	FCC PART 15: 2016	Section 15.207	Compliance
Occupied bandwidth	FCC PART 15: 2016	Section 15.215	Compliance
Band edge Requirement	FCC PART 15: 2016	Section 15.249	Compliance
Antenna Requirement	FCC PART 15: 2016	Section 15.203	Compliance

Note: The EUT has been tested as an independent unit. And Continual Transmitting in maximum power.

### 4.2 Test connection

EUT was placed on a turn table, which is 0.8 meter high above ground for below 1GHz, 1.5 meter high above ground for above 1GHz.

#### TX Mode:

EUT
-----

### 4.3 Assistant equipment used for test

Description	:	Notebook PC
Manufacturer	:	LENOVO
Model No.	:	Thinkpad S60
Note: FCC DOC approved.		



#### 4.4 Test mode

The “wtcdb.exe” was used to control EUT work in Continuous TX mode, and select test channel, wireless mode. New battery is used during all test.

##### Channel List

Channel No.	Frequency (MHz)	Channel No.	Frequency (MHz)	Channel No.	Frequency (MHz)
1	2402	18	2438	37	2476
2	2404	19	2440	38	2478
3	2406	20	2442	39	2480
... ..	... ..	... ..	... ..		

#### 4.5 Test Conditions

Temperature range	21-25°C
Humidity range	40-75%
Pressure range	86-106kPa

#### 4.6 Measurement Uncertainty (95% confidence levels, k=2)

Item	MU	Remark
Uncertainty for Power point Conducted Emissions Test	2.71dB	
Uncertainty for Radiation Emission test in 3m chamber (below 30MHz)	2.13 dB	Polarize: V
	2.57dB	Polarize: H
Uncertainty for Radiation Emission test in 3m chamber (30MHz to 1GHz)	3.90 dB	Polarize: V
	3.92dB	Polarize: H
Uncertainty for Radiation Emission test in 3m chamber (1GHz to 25GHz)	4.26 dB	Polarize: H
	4.28 dB	Polarize: V
Uncertainty for radio frequency	1×10 <sup>-9</sup>	
Uncertainty for DC and low frequency voltages	0.06%	

## 5 Spurious Emission

### 5.1 Radiation Emission

### 5.2 Radiation Emission Limits(15.209&249)

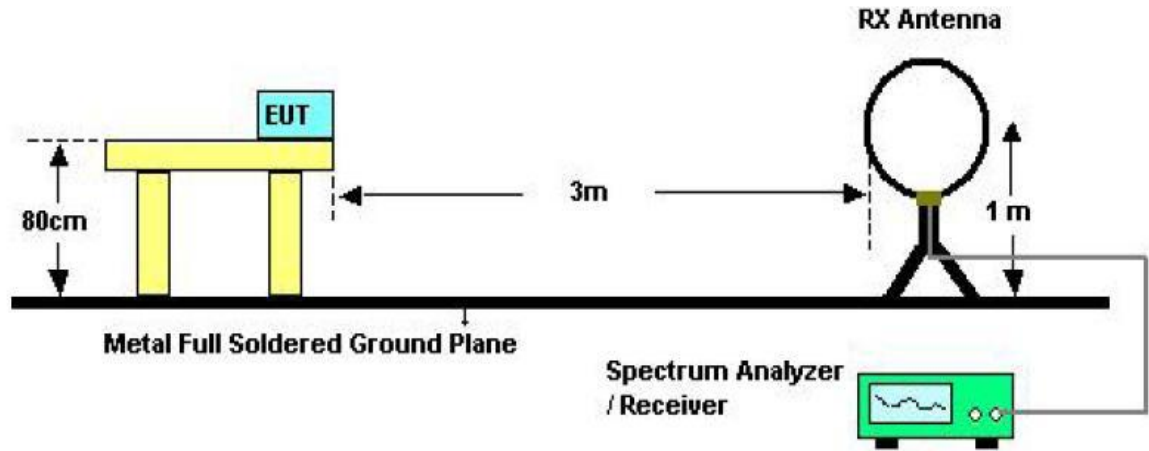
Frequency (MHz)	Field Strength Limits at 3 metres (watts, e.i.r.p.)		
	uV/m	dB uV/m	Measurement distance(m)
0.009-0.490	2400/F(kHz)	XX	300
0.490-1.705	24000/F(kHz)	XX	30
1.705-30	30	29.5	30
30~88	100(3nW)	40	3
88~216	150(6.8nW)	43.5	3
216~960	200(12nW)	46	3
Above960	500(75nW)	54	3
Carrier frequency		93.97(AV)	3
Carrier frequency		113.97(PK)	3

**NOTE:**

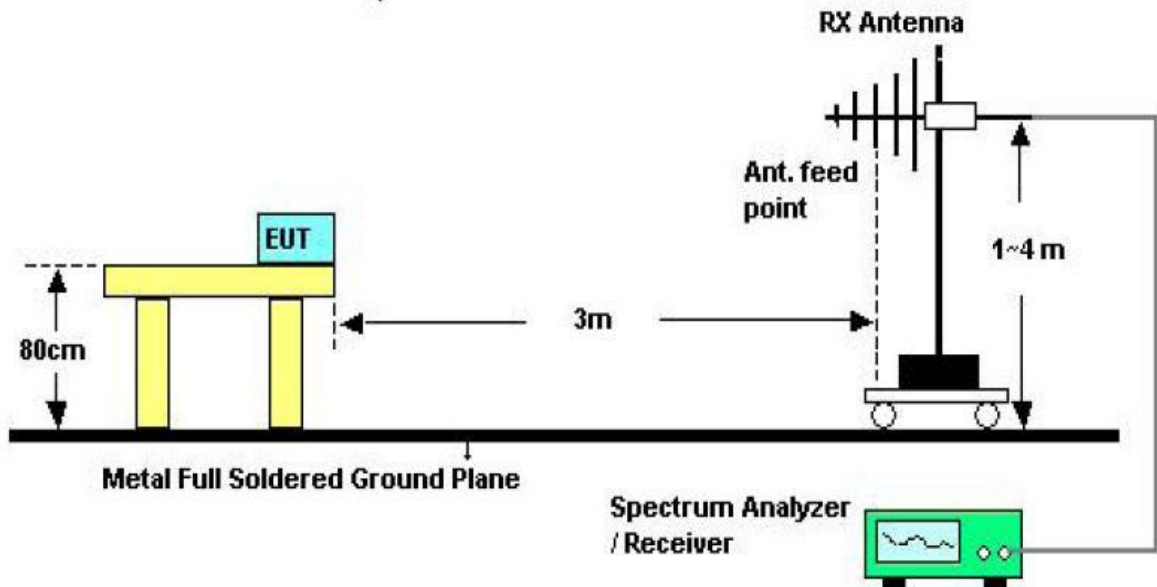
- a) The tighter limit applies at the band edges.
- b) Emission Level(dB uV/m)=20log Emission Level(uV /m)

### 5.3 Test Setup

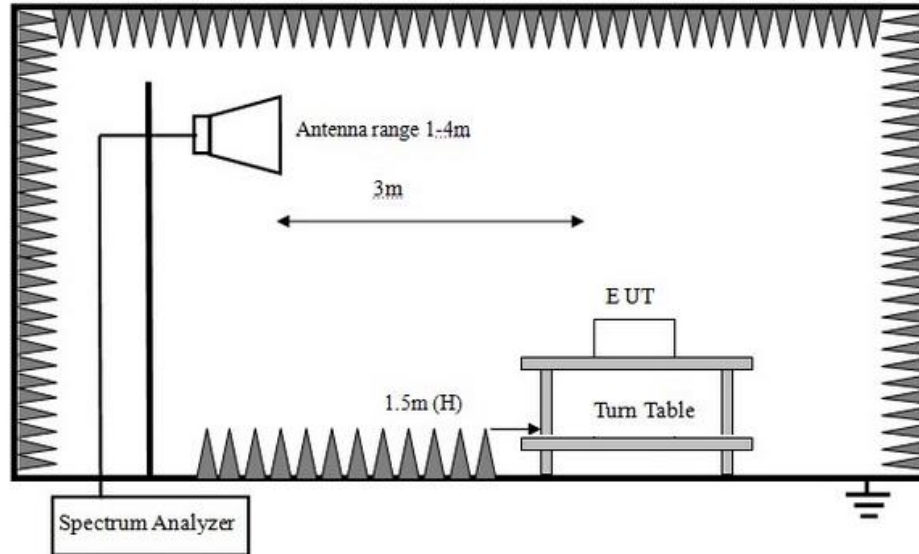
See the next page



Below 30MHz Test Setup



Above 30MHz Test Setup



### Above 1GHz Test Setup

Note: For harmonic emissions test a appropriate high pass filter was inserted in the input port of AMP.

## 5.4 Test Procedure

- a) The measuring distance of 3m shall be used for measurements at frequency up to 1GHz and above 1GHz, The EUT was placed on a rotating 0.8 m high above ground for below 1GHz and 1.5m high for above1GHz testing, The table was rotated 360 degrees to determine the position of the highest radiation
- b) The Test antenna shall vary between 1m and 4m, Both Horizontal and Vertical antenna are set of make measurement.
- c) The initial step in collecting conducted emission data is a spectrum analyzer Peak detector mode pre-scanning the measurement frequency range. Significant Peaks are then marked. and then Qusia Peak Detector mode premeasured
- d) If Peak value comply with QP limit Below 1GHz.The EUT deemed to comply with QP limit. But the Peak value and average value both need to comply with applicable limit above 1GHz.
- e) For the actual test configuration, please see the test setup photo.
- f) Test for all x, y, z axes is performed and only the worst case of X xes was recorded in the test report.
- g) For the radiated emission test above 1GHz:  
Place the measurement antenna away from each area of the EUT determined to be a source of emissions at the specified measurement distance, while keeping the measurement antenna aimed at the source of emissions at each frequency of significant emissions, with polarization oriented for maximum response. The measurement antenna may have to be higher or lower than the EUT, depending on the radiation pattern of the emission and staying aimed at the emission source for receiving the maximum signal. The final measurement antenna elevation shall be that which maximizes the emissions. The measurement antenna elevation for maximum emissions shall be restricted to a range of heights of from 1 m to 4 m above the ground or reference ground plane.

## 5.5 Test Equipment Setting For emission test Result.

9KHz~150KHz	RBW 200Hz	VBW1KHz
150KHz~30MHz	RBW 9KHz	VBW 30KHz
30MHz~1GHz	RBW 120KHz	VBW 300KHz
Above 1GHz	RBW 1MHz	VBW 3MHz

## 5.6 Test Condition

Continual Transmitting in maximum power.

## 5.7 Test Result

We have scanned the 10th harmonic from 9KHz to the EUT.  
Detailed information please see the following page.

From 9KHz to 30MHz: Conclusion: PASS

Note: The amplitude of spurious emissions which are attenuated by more than 20dB below the permissible value has no need to be reported.

Remark: Only show the test data of the worst Channel in this report.

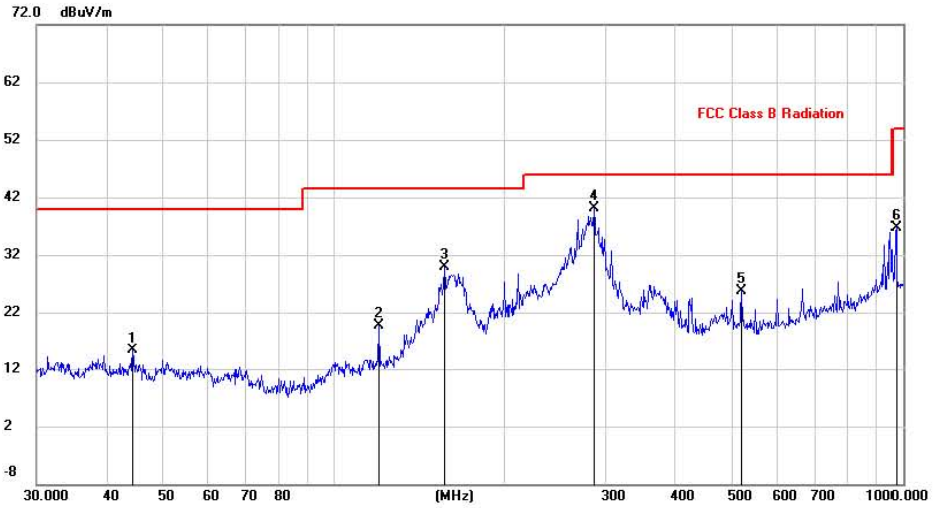
From 30MHz to 1000MHz: Conclusion: PASS

Below 1GHz

Site LAB Polarization: **Horizontal** Temperature: 24.3  
 Limit: Power:  
 EUT: Selfie robot Distance: 3m  
 M/N: ZH-SPS01  
 Mode:  
 Note:

**Radiated Emission Measurement**

File: ZH-SPS01 Data: #12 Date: 2016/12/22 Time: 11:35:50



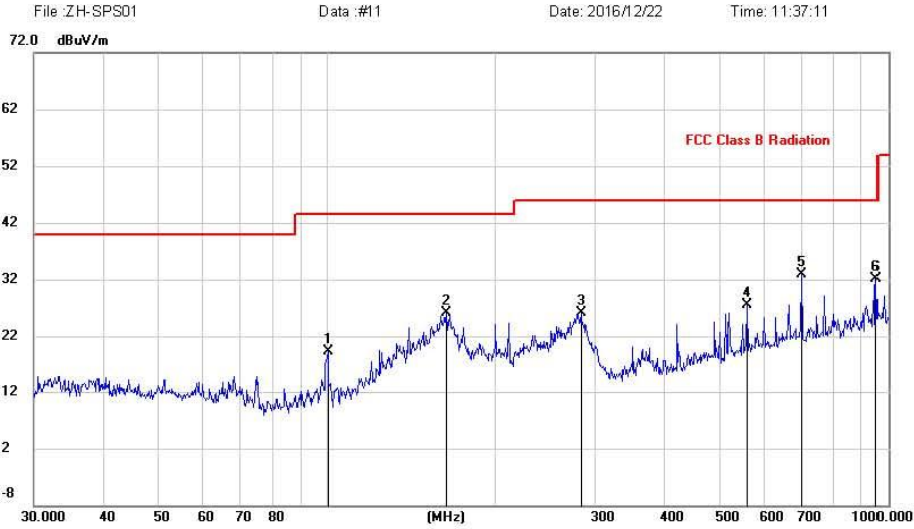
No.	Mk.	Freq.	Reading	Correct	Measurement	Limit	Margin	Antenna	Table
		MHz	Level	Factor	dBuV/m	dBuV/m	dB	Height	Degree
			dBuV	dB				cm	degree
1		44.1200	1.40	13.85	15.25	40.00	-24.75	peak	
2		119.8555	7.13	12.58	19.71	43.50	-23.79	peak	
3		157.0072	15.40	14.58	29.98	43.50	-13.52	peak	
4	*	285.9778	27.14	13.06	40.20	46.00	-5.80	peak	
5		520.8881	7.71	17.92	25.63	46.00	-20.37	peak	
6		975.7527	13.15	23.65	36.80	54.00	-17.20	peak	

Note: 1. \*:Maximum data; x:Over limit; l:over margin.  
 2.Measurement=Reading Level+Correct Factor; Correct Factor=Antenna Factor+Cable Loss.

Site: LAB  
 Limit:  
 EUT: Selfie robot  
 M/N: ZH-SPS01  
 Mode:  
 Note:

Polarization: **Vertical**  
 Power:  
 Distance: 3m  
 Temperature: 24.3  
 Humidity: 35 %

**Radiated Emission Measurement**



No.	Mk.	Freq. MHz	Reading Level dBuV	Correct Factor dB	Measurement dBuV/m	Limit dBuV/m	Margin dB	Antenna Height cm	Table Degree	Comment
1		100.2286	8.74	10.63	19.37	43.50	-24.13	peak		
2		163.7547	11.83	14.28	26.11	43.50	-17.39	peak		
3		283.9791	13.16	13.03	26.19	46.00	-19.81	peak		
4		560.6928	8.96	18.62	27.58	46.00	-18.42	peak		
5	*	701.7607	12.56	20.40	32.96	46.00	-13.04	peak		
6		952.0937	8.62	23.58	32.20	46.00	-13.80	peak		

Note: 1. \*: Maximum data; x: Over limit; !: over margin.  
 2. Measurement=Reading Level+Correct Factor; Correct Factor=Antenna Factor+Cable Loss.

**Notes:** Above is below 1GHz test data. This report only shall the worst case mode for TX 2402MHz.



## Radiated Emissions Result of Inside band and out of band

1GHz—25GHz Radiated emission Test result									
EUT: selfie robot					M/N: ZH-SPS01				
Power: DC 3.7V from battery									
Test date: 2016-12-01			Test site: 3m Chamber			Tested by: Reak Yang			
Test mode: 2402MHz									
Antenna polarity: Vertical									
No	Freq (MHz)	Read Level (dBUV/m)	Antenna Factor (dB/m)	Cable loss(dB)	Amp Factor (dB)	Result (dBUV/m)	Limit (dBUV/m)	Margin (dB)	Remark
1	2402	89.62	27.61	3.94	34.97	86.20	114	27.80	PK
2	2402	82.88	27.61	3.94	34.97	79.46	94	14.54	AV
3	4804	53.67	31.29	5.70	34.19	56.47	74	17.53	PK
4	4804	42.96	31.29	5.70	34.19	45.76	54	8.24	AV
5	2400	52.78	27.62	3.94	34.97	49.37	74	24.63	PK
6	2400	42.33	27.62	3.94	34.97	38.92	54	15.08	AV
	/								
Antenna Polarity: Horizontal									
1	2402	92.44	27.61	3.94	34.97	89.02	114	24.98	PK
2	2402	85.75	27.61	3.94	34.97	82.33	94	11.67	AV
3	4804	53.82	31.29	5.70	34.19	56.62	74	17.38	PK
4	4804	44.13	31.29	5.70	34.19	46.93	54	7.07	AV
5	2400	52.93	27.62	3.94	34.97	49.52	74	24.48	PK
6	2400	43.15	27.62	3.94	34.97	39.74	54	14.26	AV
	/	/							
Note:									
1,Measuring frequency from 1GHz to 25GHz									
2,Spectrum Set for PK measure: RBW=1MHz, VBW=1MHz, Sweep time=Auto, Detector: PK									
2,Spectrum Set for AV measure: RBW=1MHz, VBW=3MHz, Sweep time=Auto, Detector: RMS									
3, Result = Read level + Antenna factor + cable loss-Amp factor									
4, All the other emissions not reported were too low to read and deemed to comply with FCC limit.									

EUT: selfie robot M/N: ZH-SPS01									
Power: DC 3.7V from battery									
Test date: 2016-12-01 Test site: 3m Chamber Tested by: Reak Yang									
Test mode: 2440MHz									
Antenna polarity: Vertical									
No	Freq (MHz)	Read Level (dBuV/m)	Antenna Factor (dB/m)	Cable loss(dB)	Amp Factor (dB)	Result (dBuV/m)	Limit (dBuV/m)	Margin (dB)	Remark
1	2440	90.72	27.60	3.97	34.97	87.32	114	26.68	PK
2	2440	81.47	27.60	3.97	34.97	78.07	94	15.93	AV
3	4880	54.62	31.38	5.75	34.14	57.61	74	16.39	PK
4	4880	44.75	31.38	5.75	34.14	47.74	54	6.26	AV
	/	/							
Antenna Polarity: Horizontal									
1	2440	93.57	27.60	3.97	34.97	90.17	114	23.83	PK
2	2440	84.21	27.60	3.97	34.97	80.81	94	13.19	AV
3	4880	53.92	31.38	5.75	34.14	56.91	74	17.09	PK
4	4880	43.75	31.38	5.75	34.14	46.74	54	7.26	AV
	/	/							
Note:									
1, Measuring frequency from 1GHz to 25GHz									
2,Spectrum Set for PK measure: RBW=1MHz, VBW=1MHz, Sweep time=Auto, Detector: PK									
2,Spectrum Set for AV measure: RBW=1MHz, VBW=3MHz, Sweep time=Auto, Detector: RMS									
3, Result = Read level + Antenna factor + cable loss-Amp factor									
4, All the other emissions not reported were too low to read and deemed to comply with FCC limit.									

EUT: selfie robot M/N: ZH-SPS01									
Power: DC 3.7V from battery									
Test date: 2016-12-01 Test site: 3m Chamber Tested by: Reak Yang									
Test mode: 2480MHz									
Antenna polarity: Vertical									
No	Freq (MHz)	Read Level (dBuV/m)	Antenna Factor (dB/m)	Cable loss (dB)	Amp Factor (dB)	Result (dBuV/m)	Limit (dBuV/m)	Margin (dB)	Remark
1	2480	89.82	27.59	4.00	34.97	86.44	114	27.56	PK
2	2480	81.38	27.59	4.00	34.97	78.00	94	16.00	AV
3	4960	53.41	31.43	5.79	34.12	56.51	74	17.49	PK
4	4960	43.14	31.43	5.79	34.12	46.24	54	7.76	AV
5	2483.5	53.33	27.59	4.00	34.97	49.95	74	24.05	PK
6	2483.5	42.86	27.59	4.00	34.97	39.48	54	14.52	AV
	/	/							
Antenna Polarity: Horizontal									
1	2480	92.38	27.59	4.00	34.97	89.00	114	25.00	PK
2	2480	82.81	27.59	4.00	34.97	79.43	94	14.57	AV
3	4960	55.22	31.43	5.79	34.12	58.32	74	15.68	PK
4	4960	45.88	31.43	5.79	34.12	48.98	54	5.02	AV
5	2483.5	52.79	27.59	4.00	34.97	49.41	74	24.59	PK
6	2483.5	41.31	27.59	4.00	34.97	37.93	54	16.07	AV
	/	/							
Note:									
1, Measuring frequency from 1GHz to 25GHz									
2, Spectrum Set for PK measure: RBW=1MHz, VBW=1MHz, Sweep time=Auto, Detector: PK									
2,Spectrum Set for AV measure: RBW=1MHz, VBW=3MHz, Sweep time=Auto, Detector: RMS									
3, Result = Read level + Antenna factor + cable loss-Amp factor									
4, All the other emissions not reported were too low to read and deemed to comply with FCC limit.									

## 6 POWER LINE CONDUCTED EMISSION

### 6.1 Conducted Emission Limits(15.207)

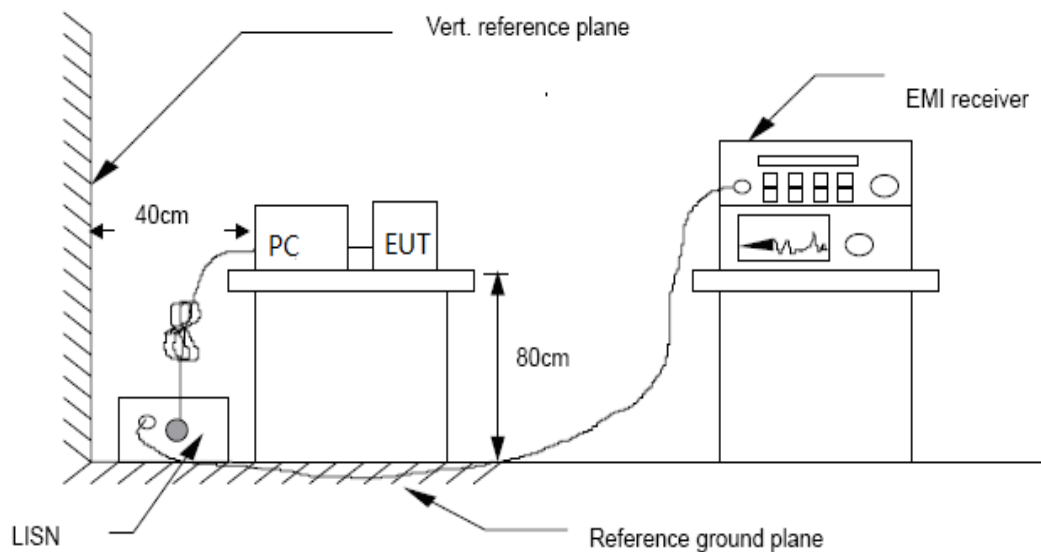
Frequency MHz	Limits dB( $\mu$ V)	
	Quasi-peak Level	Average Level
0.15 -0.50	66 -56*	56 - 46*
0.50 -5.00	56	46
5.00 -30.00	60	50

Notes: 1. \*Decreasing linearly with logarithm of frequency.

2. The lower limit shall apply at the transition frequencies.

3. The limit decreases in line with the logarithm of the frequency in the range of 0.15 to 0.50 MHz.

### 6.2 Test Setup



### 6.3 Test Procedure

The EUT is put on the plane 0.8m high above the ground by insulating support and is connected to the power mains through a line impedance stabilization network (L.I.S.N.). This provides a 50ohm coupling impedance for the EUT system. Please refer the block diagram of the test setup and photographs. Both sides of AC lines are checked to find out the maximum conducted emission. In order to find the maximum emission levels, the relative positions of equipment and all of the interface cables shall be changed according to ANSI C63.10-2013 on Conducted Emission Measurement. The bandwidth of test receiver (R & S ESCS30) is set at 9 kHz.

### 6.4 Test Results

#### TX MODE

All modes have been tested, and only worse case mode is reported only.

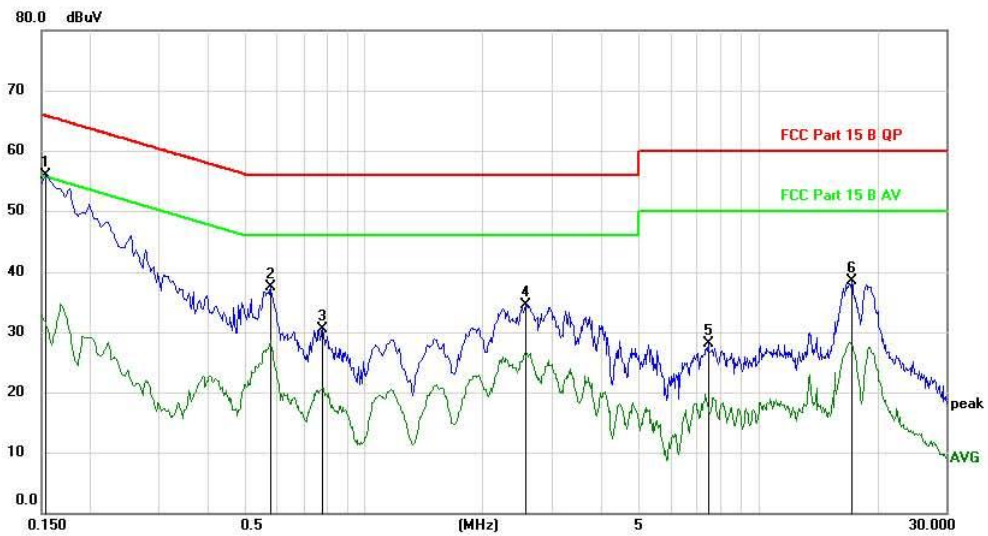
#### PASS

Detailed information please see the following page.

Site: LAB	Phase: <b>N</b>	Temperature: 24
Limit:	Power: DC 5V	Humidity: 45 %
EUT: selfie robot		
MN: ZH-SPS01		
Mode:		
Note:		

**Conducted Emission Measurement**

File: ZH-SPS01      Data: #5      Date: 2016-12-24      Time: 11:08:30



No.	Mk.	Freq. MHz	Reading Level dBuV	Correct Factor dB	Measure- ment dBuV	Limit dBuV	Margin dB	Detector	Comment
1	*	0.1545	46.33	9.66	55.99	65.75	-9.76	peak	
2		0.5775	27.78	9.72	37.50	56.00	-18.50	peak	
3		0.7755	20.78	9.74	30.52	56.00	-25.48	peak	
4		2.5605	24.63	9.95	34.58	56.00	-21.42	peak	
5		7.4205	17.85	10.25	28.10	60.00	-31.90	peak	
6		17.2205	27.98	10.43	38.41	60.00	-21.59	peak	

\*:Maximum data    x:Over limit    !:over margin

(Reference Only)

Note: Measurement=Reading Level+Correc Factor. Factor=(LISN or ISN or PLC or Current Probe)Factor+Cable

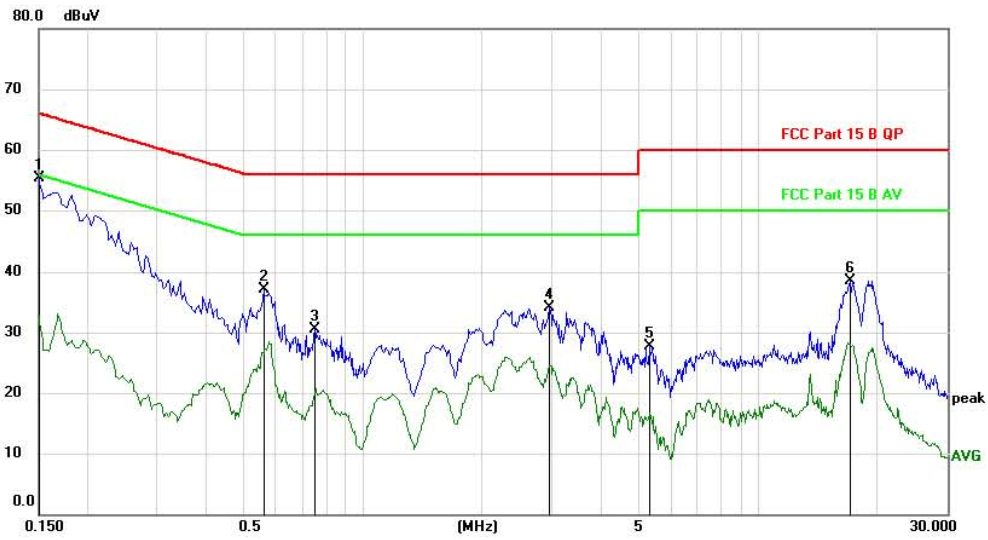
Site: LAB  
 Limit:  
 EUT: selfie robot  
 MN: ZH-SPS01  
 Mode:  
 Note:

Phase: **L1**  
 Power: DC 5V

Temperature: 24  
 Humidity: 45 %

**Conducted Emission Measurement**

File :ZH-SPS01      Data :#6      Date: 2016-12-24      Time: 11:10:05



No.	Mk.	Freq. MHz	Reading Level dBuV	Correct Factor dB	Measure- ment dBuV	Limit dBuV	Margin dB	Detector	Comment
1	*	0.1500	45.68	9.66	55.34	66.00	-10.66	peak	
2		0.5595	27.31	9.72	37.03	56.00	-18.97	peak	
3		0.7485	20.69	9.74	30.43	56.00	-25.57	peak	
4		2.9605	24.19	9.99	34.18	56.00	-21.82	peak	
5		5.2805	17.58	10.17	27.75	60.00	-32.25	peak	
6		17.0805	28.10	10.44	38.54	60.00	-21.46	peak	

\*:Maximum data    x:Over limit    !:over margin

(Reference Only)

Note: Measurement=Reading Level+Correc Factor. Factor=(LISN or ISN or PLC or Current Probe)Factor+Cable

## 7 Bandwidth

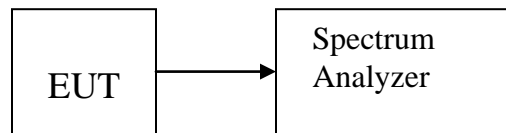
### 7.1 Test limit

Please refer section 15.215

### 7.2 Method of measurement

- a) The bandwidth is measured at an amplitude level reduced 20dB from the reference level. The reference level is the level of the highest amplitude signal observed from the transmitter at the fundamental frequency. Once the reference level is established, the equipment is conditioned with typical modulating signal to produce the worst-case (i.e. the widest) bandwidth.
- b) The test receiver RBW set 100Hz, VBW set 300KHz, Sweep time set auto.
- c) Peak detector is used

### 7.3 Test Setup



### 7.4 Test Results

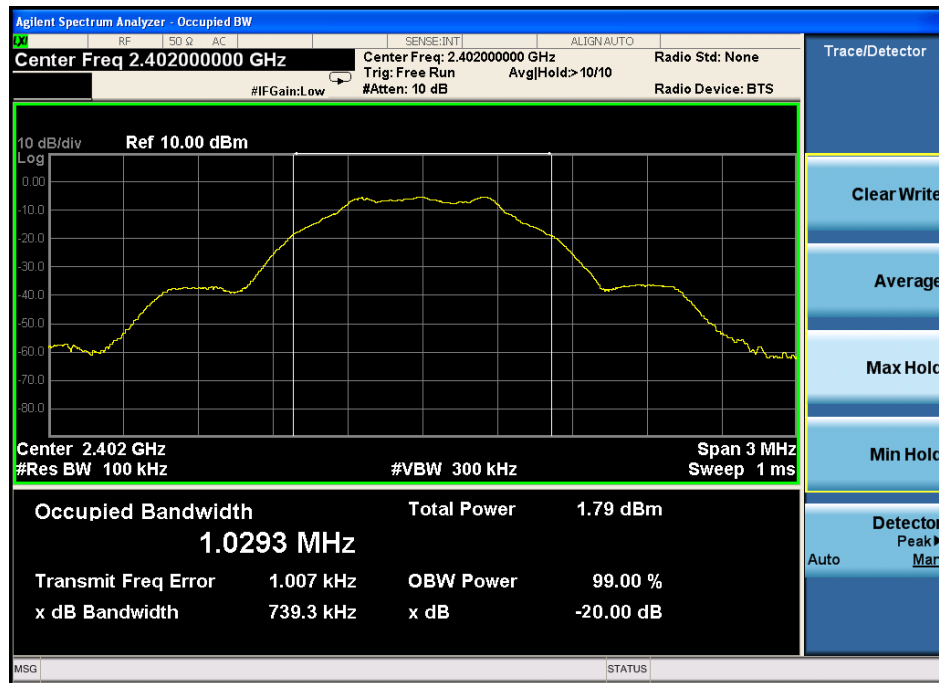
PASS.

Detailed information please see the following page.

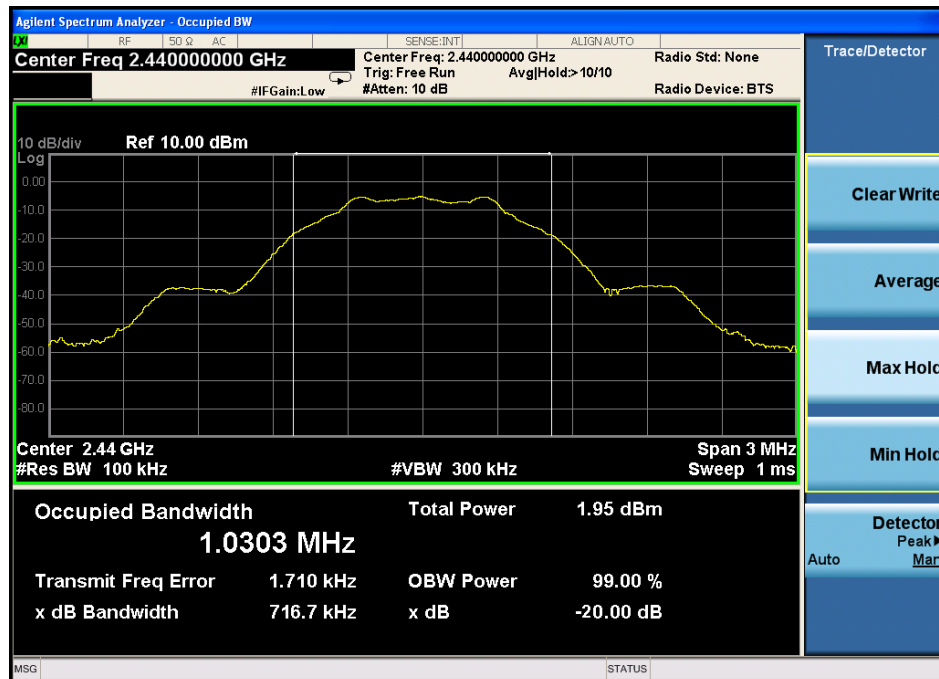
Channel	Frequency (MHz)	20dB Bandwidth (KHz)	Limit (KHz)	Result
CH1	2402	739.3	/	PASS
CH19	2440	716.7	/	PASS
CH39	2480	716.2	/	PASS



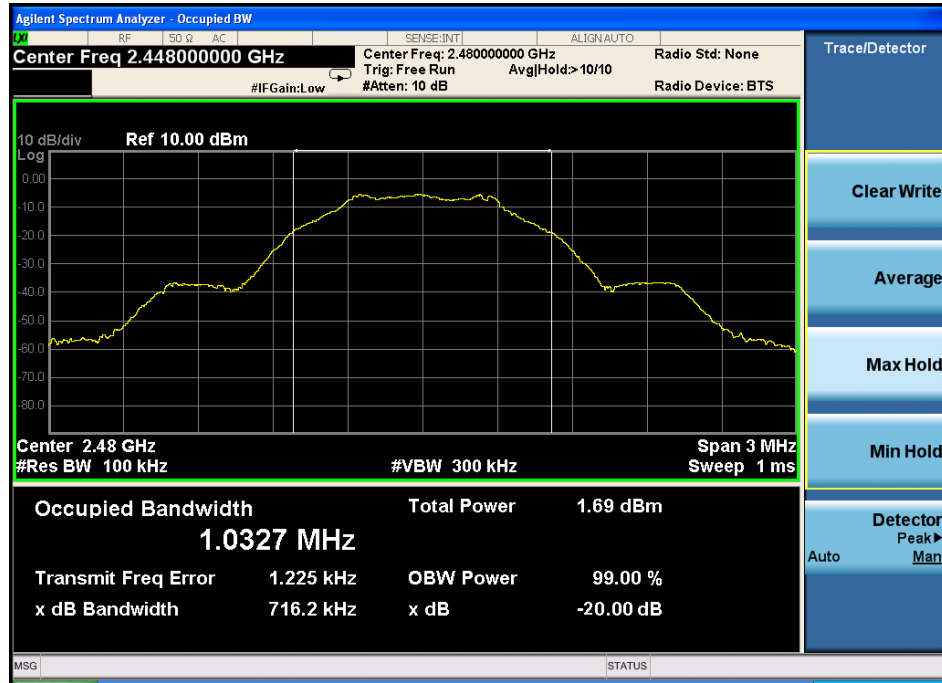
CH Low :



CH Mid :



CH High :



## 8 Antenna Requirement

### 8.1 Standard Requirement

An intentional radiator shall be designed to ensure that no antenna other than that furnished by the responsible party shall be used with the device. The use of a permanently attached antenna or of an antenna that uses a unique coupling to the intentional radiator shall be considered sufficient to comply with the provisions of this Section. The manufacturer may design the unit so that a broken antenna can be replaced by the user, but the use of a standard antenna jack or electrical connector is prohibited.

### 8.2 Antenna Connected Construction

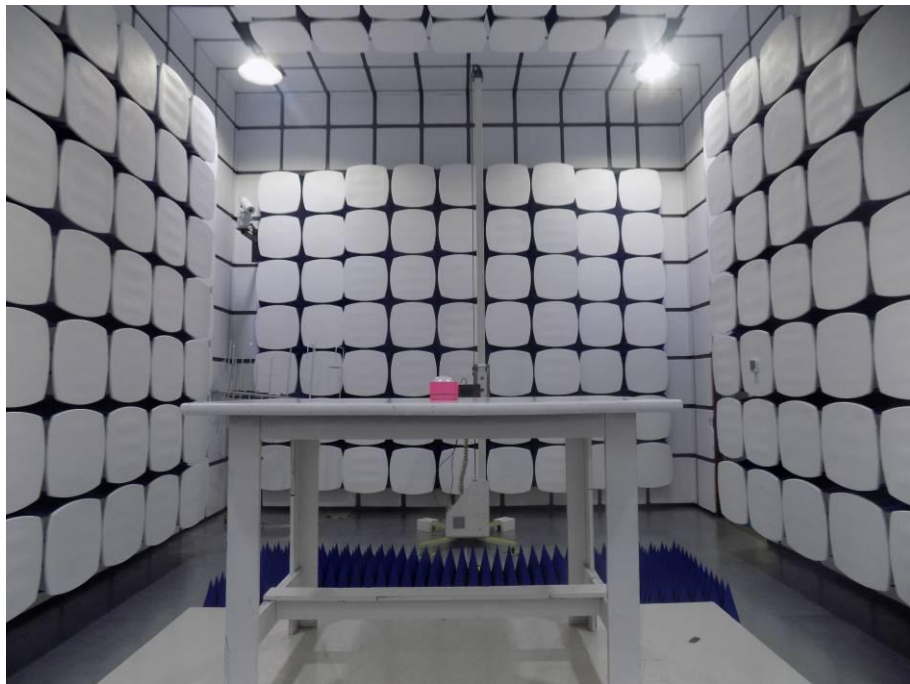
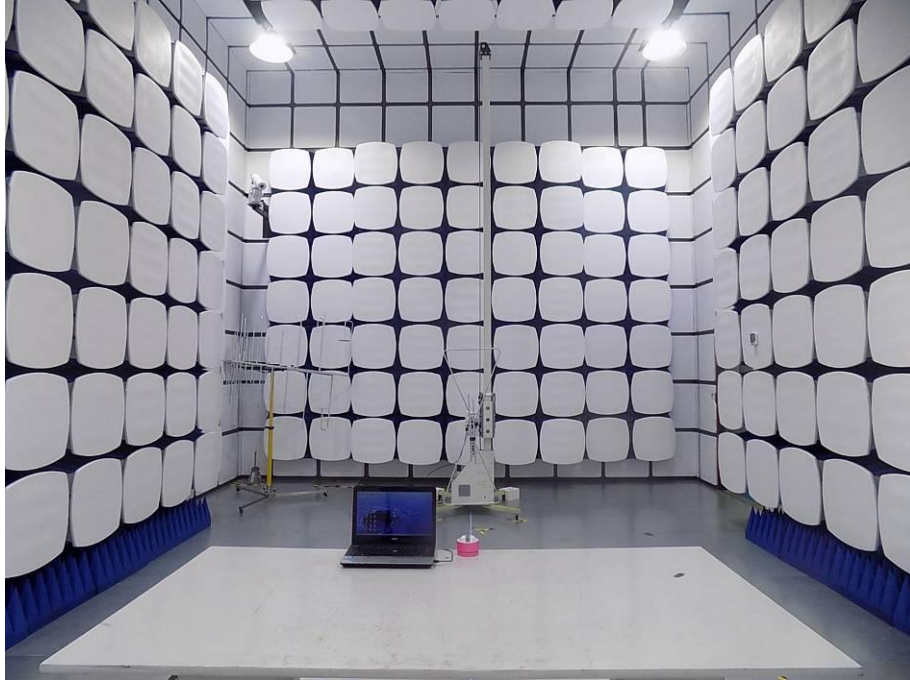
The directional gains of antenna used for transmitting is 0dBi, and is a PCB Antenna and no consideration of replacement. Please see EUT photo for details.

### 8.3 Result

The EUT antenna is PCB Antenna. It comply with the standard requirement.

## 9 Photographs of Test Setup

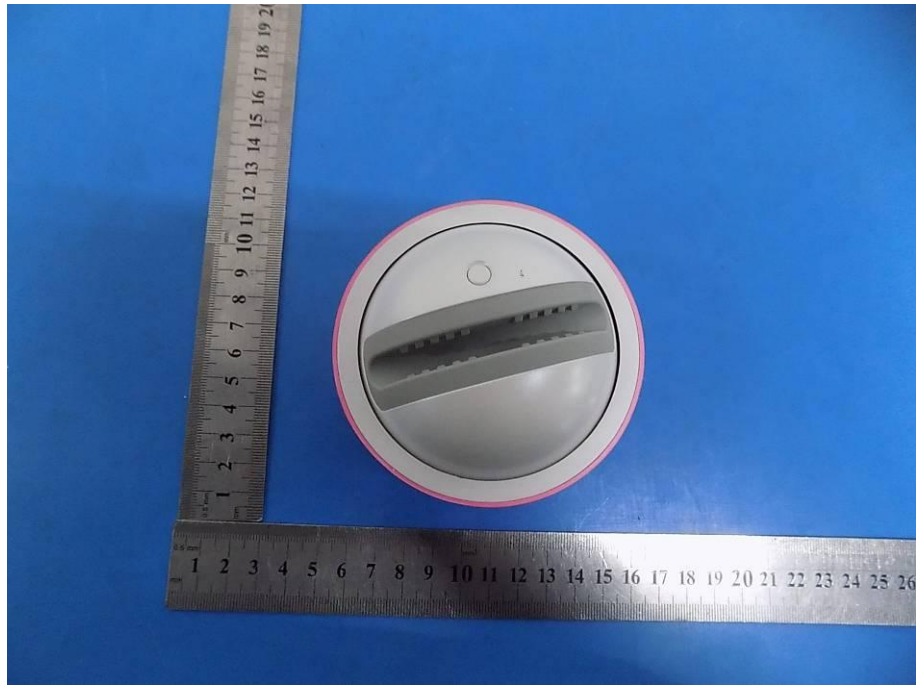
### 9.1 Photos of Radiated emission

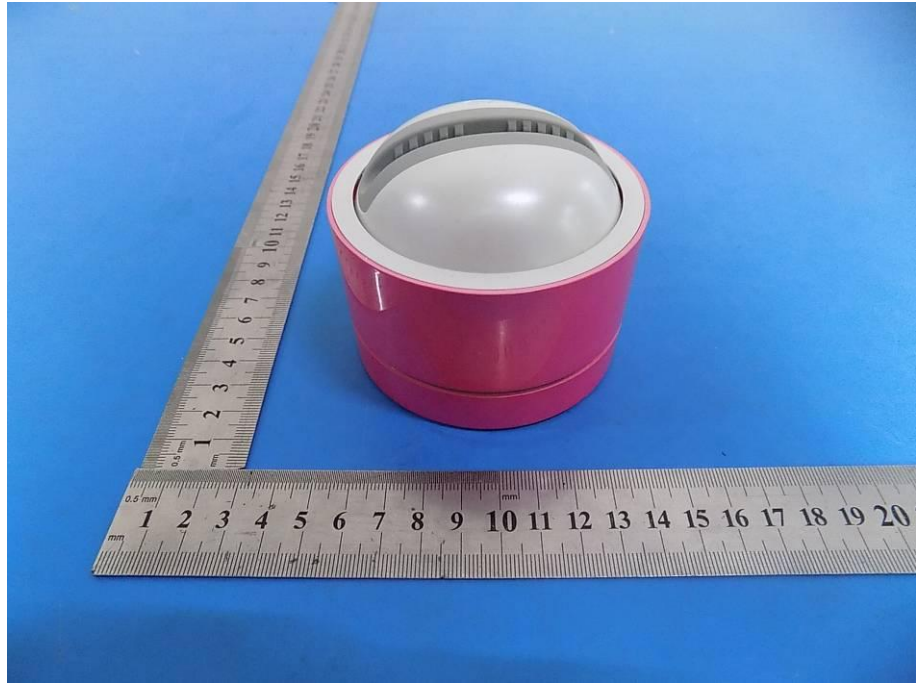


## 9.2 Photos of Conduction emission



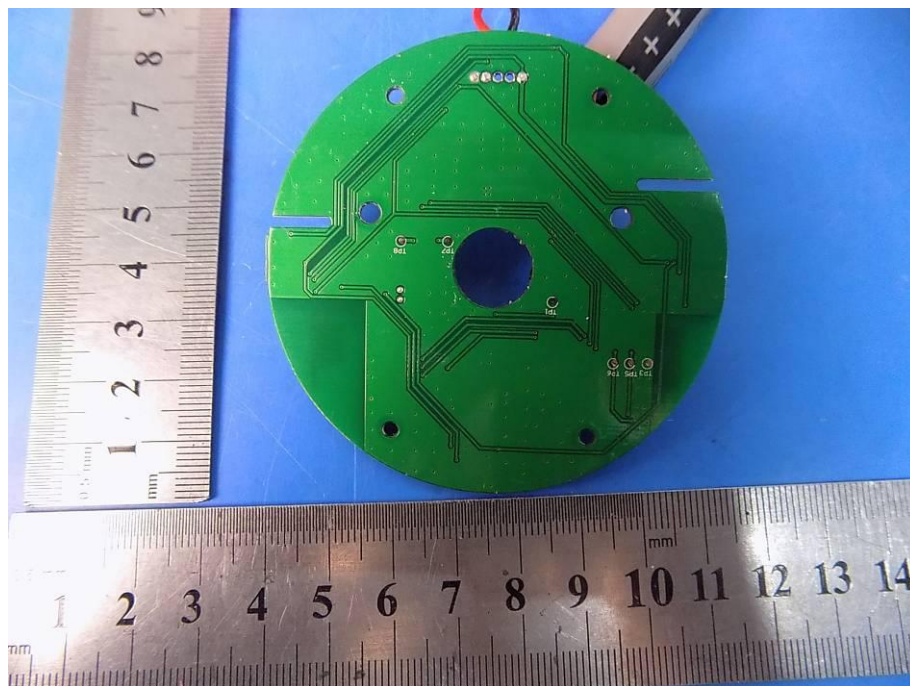
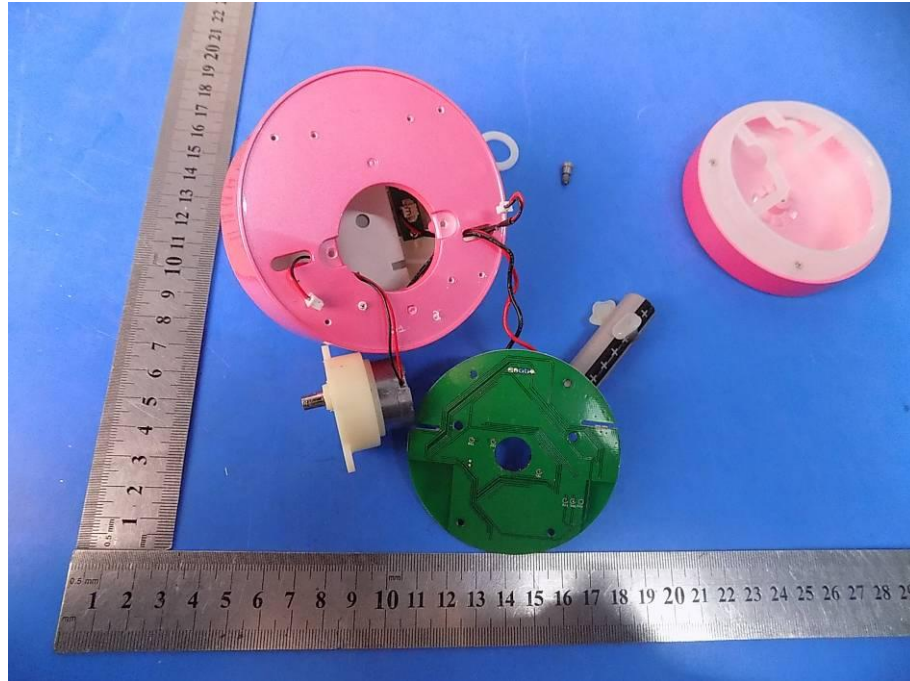
# 10 Photographs of EUT

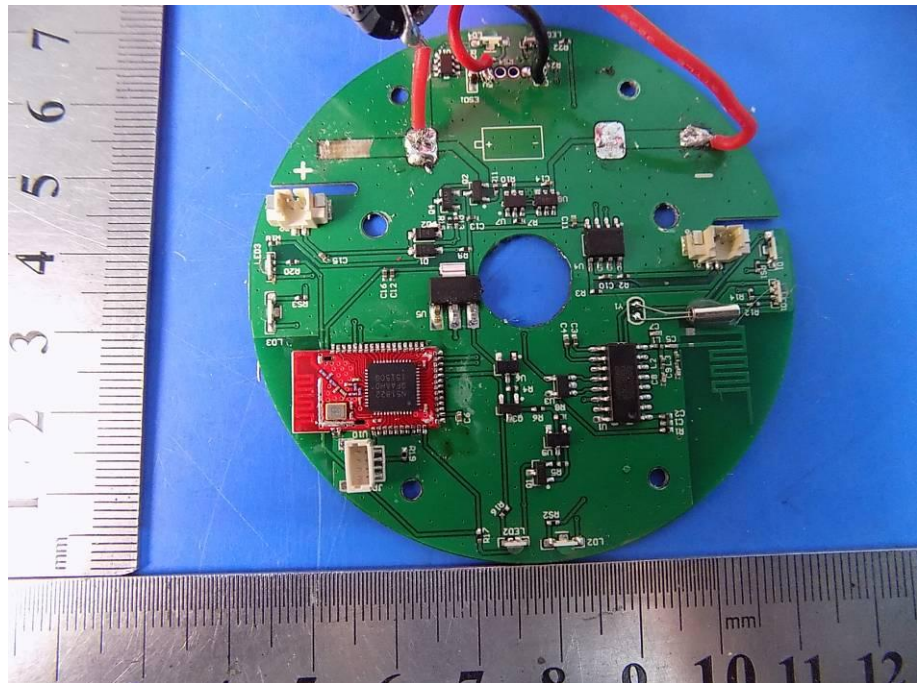
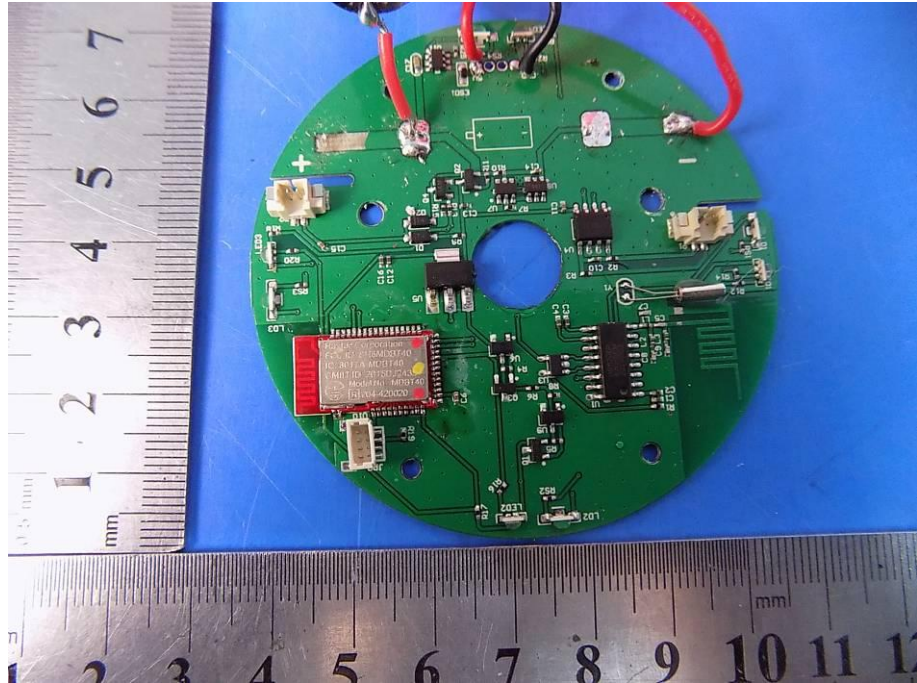












----- END OF REPORT-----