

无线收音话筒

使用说明书



使用之前请先阅读使用说明书,以便更好的了解和使用此款无线麦克风产品的各种功能。



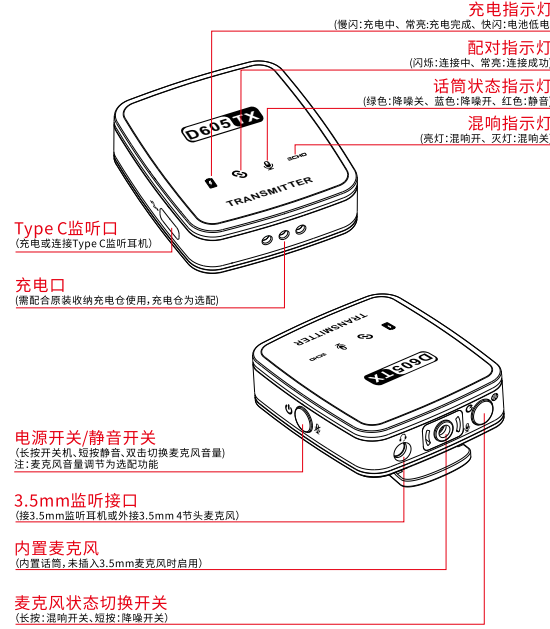
产品介绍

感谢您选择我们的产品。
本产品是一款智能无线领夹式话筒,可提供专业水平的现场录音输出。即插即用,无需应用软件。用途广泛,可用于网络直播、视频录影、拍摄、节目采访、节目录制、视频教学、会议演讲、KTV伴奏等场合。
无线收音话筒由TX发射器和RX接收器组成(如下图所示)。

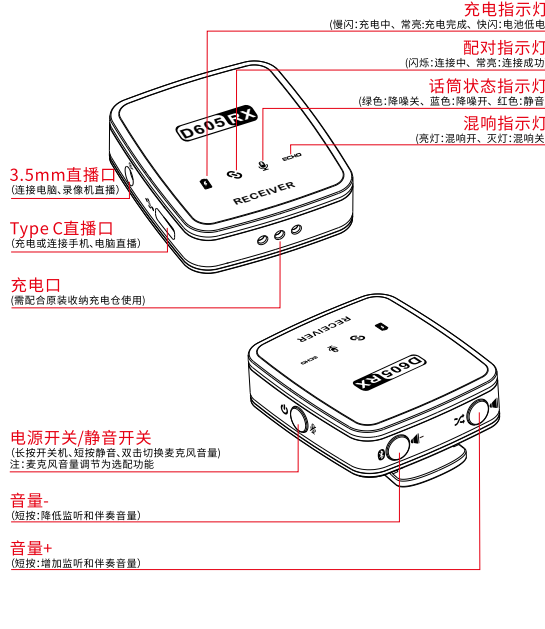


★使用的时候注意区分发射器和接收器

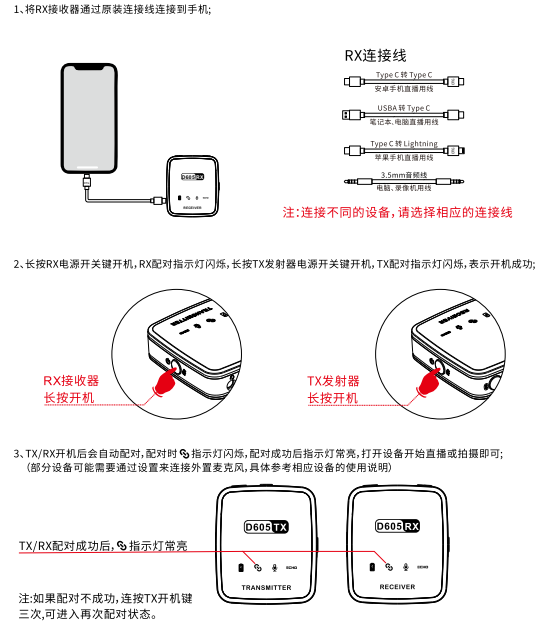
功能介绍(TX发射器)



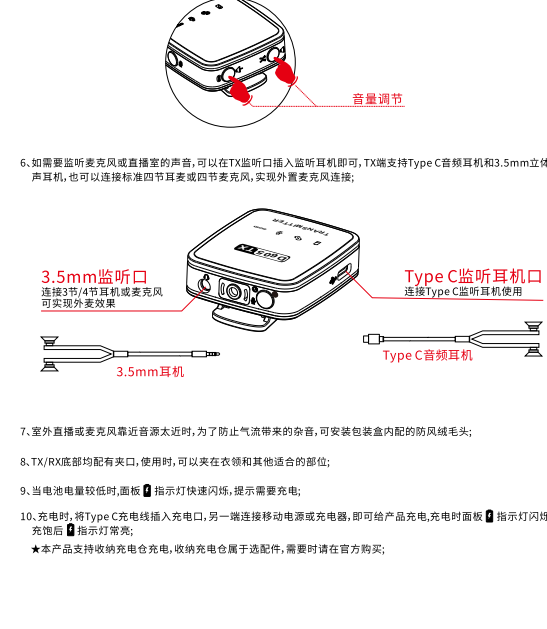
功能介绍(RX接收器)



操作说明



规格参数



规格参数

TX规格参数	
输入电压	DC 5V/1A
通讯距离	最大50米(空旷环境)
电池电压	3.7V
电池容量	300mAh(部分机型350-400mAh)
工作电流	45mAh MAX
待机电流	42uA MAX
灵敏度	90dB
信噪比	> 75dB
续航时间	10小时左右

RX规格参数	
输入电压	DC 5V/1A
通讯距离	最大50米(空旷环境)
电池电压	3.7V
电池容量	300mAh(部分机型350-400mAh)
工作电流	45mAh MAX
待机电流	42uA MAX
灵敏度	90dB
频率稳定性	±10PPM
音频输出	350mV MAX
信噪比	> 75dB
续航时间	10小时左右

其它参数

通讯频率	2.4G
麦克风特性	全指向性麦克风
频响范围	30HZ-18KHZ
充电时长	1-2小时
工作温度	-10℃—45℃
存储温度	-20℃—60℃

合格证

Certificate of quality

检验员
CHECKER
日期
DATE

本产品经检验已合格
This product has passed the inspection

保修卡

Warranty card

产品编号
Product NO.
销售日期
Sales Date
销售单位
Retail stores

Wireless Microphone

User'S Maual



Always read the instructions before you start.



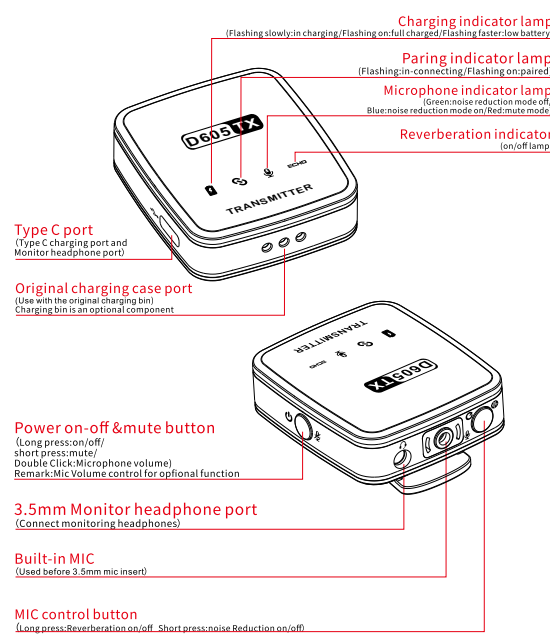
Product Introduction

Thanks you for choosing our products.
This product is a smart wireless collar-clip microphone that provides professional on-site recording output. Plug and play, no app required, Multi-purpose. It could be used for webcasting, video,vlog, shooting, prograrm interview,recording, video-teachin, conference speech,KTV accompaniment and other occastios.
Wireless Microphone consisted of Transmitter and Receiver (PICS HERE)

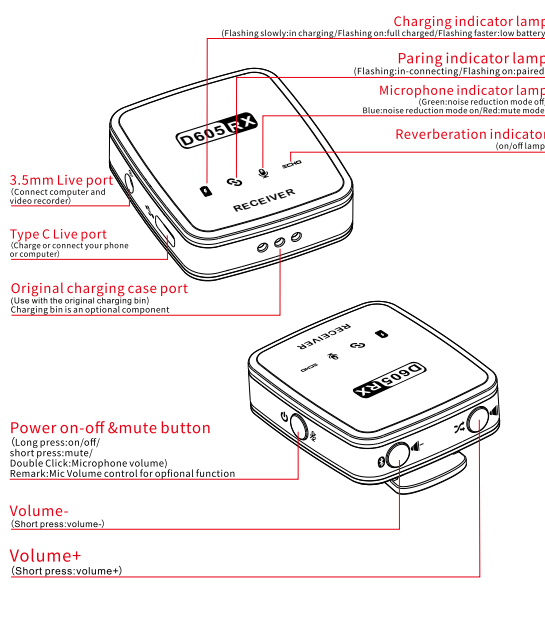


★Please use properly and make a distincton between Transmitter & Receiver

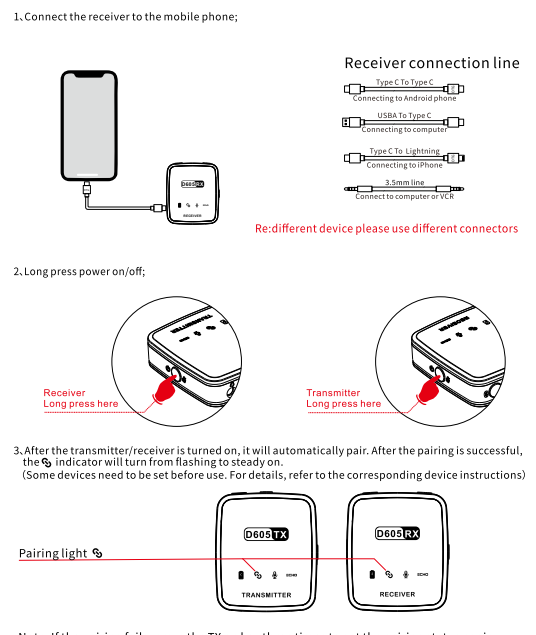
Function Introductio(Transmitter)



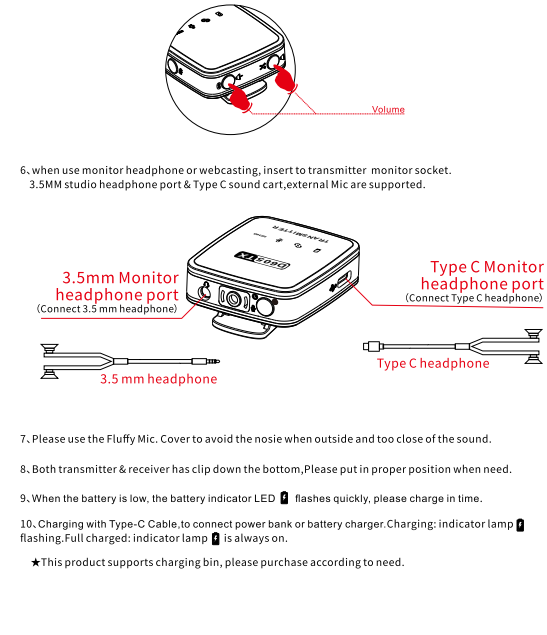
Function Introductio(Receiver)



Instruction



规格参数



Specification

Transmitter	
Input voltage	DC 5V/1A
Transmission distance	50M MAX
Battery voltage	3.7V
Battery capacity	300mAh
Operating current	45mAh MAX
Sleepy current	42uA MAX
sensitivity	90dB
Signal to noise ratio	> 75dB
Operating hours	10H

Receiver	
Input voltage	DC 5V/1A
Transmission distance	50M MAX
Battery voltage	3.7V
Battery capacity	300mAh
Operating current	45mAh MAX
Sleepy current	42uA MAX
sensitivity	90dB
Frequency stability	±10PPM
Audio range	350mV MAX
Signal to noise ratio	> 75dB
Operating hours	10H

Other

Communication frequency	2.4G
Microphone characteristics	Omnidirectional
Frequency response range	30HZ-18KHZ
Charging time	1-2H
Operating temperature	-10℃—45℃
Storage temperature	-20℃—60℃

合格证

Certificate of quality

检验员
CHECKER
日期
DATE

本产品经检验已合格
This product has passed the inspection

保修卡

Warranty card

产品编号
Product NO.
销售日期
Sales Date
销售单位
Retail stores

§ 15.19 Labelling requirements.

This device complies with part 15 of the FCC Rules. Operation is subject to the following two conditions: (1) This device may not cause harmful interference, and (2) this device must accept any interference received, including interference that may cause undesired operation.

§ 15.21 Information to user.

Any Changes or modifications not expressly approved by the party responsible for compliance could void the user's authority to operate the equipment.

§ 15.105 Information to the user.

Note: This equipment has been tested and found to comply with the limits for a Class B digital device, pursuant to part 15 of the FCC Rules. These limits are designed to provide reasonable protection against harmful interference in a residential installation. This equipment generates uses and can radiate radio frequency energy and, if not installed and used in accordance with the instructions, may cause harmful interference to radio communications. However, there is no guarantee that interference will not occur in a particular installation. If this equipment does cause harmful interference to radio or television reception, which can be determined by turning the equipment off and on, the user is encouraged to try to correct the interference by one or more of the following measures:

- Reorient or relocate the receiving antenna.
- Increase the separation between the equipment and receiver.
- Connect the equipment into an outlet on a circuit different from that to which the receiver is connected.
- Consult the dealer or an experienced radio/TV technician for help.

The device has been evaluated to meet general RF exposure requirement. The device can be used in portable exposure condition without restriction.