

FCC CERTIFICATION TEST REPORT

FOR

Applicant	:	Dongguan Yat Import and Export Limited
Address	:	Room 706-710, Business Plaza, Dalingshan Town, Dongguan City, Guandong, China 523820
Equipment under Test	:	Remote Shutter
Model No.	:	YSS12-13
Trade Mark	:	N/A
FCC ID	:	2AKMC2462
Manufacturer	:	Dongguan Yat Import and Export Limited
Address	:	Room 706-710, Business Plaza, Dalingshan Town, Dongguan City, Guandong, China 523820

Issued By: Dongguan Dongdian Testing Service Co., Ltd.

Add: No. 17, Zongbu Road 2, Songshan Lake Sci&Tech, Industry Park, Dongguan City,
Guangdong Province, China, 523808

Tel: +86-0769-22891499 [Http://www.dgddt.com](http://www.dgddt.com)

TABLE OF CONTENTS

	Test report declares.....	4
1.	Summary of test results	5
2.	General test information.....	6
2.1.	Description of EUT	6
2.2.	Accessories of EUT.....	6
2.3.	Assistant equipment used for test.....	6
2.4.	Block diagram of EUT configuration for test	6
2.5.	Test environment conditions	7
2.6.	Deviations of test standard	7
2.7.	Test laboratory.....	7
2.8.	Measurement uncertainty	7
3.	Equipment used during test	8
4.	6dB Bandwidth and 99% Bandwidth.....	9
4.1.	Block diagram of test setup	9
4.2.	Limits	9
4.3.	Test Procedure.....	9
4.4.	Test Result.....	9
4.5.	Original test data	10
5.	Maximum Peak Output Power	11
5.1.	Block diagram of test setup	11
5.2.	Limits	11
5.3.	Test Procedure.....	11
5.4.	Test Result.....	11
6.	Power Spectral Density	12
6.1.	Block diagram of test setup	12
6.2.	Limits	12
6.3.	Test Procedure.....	12
6.4.	Test Result.....	12
6.5.	Original test data	12
7.	Emissions in non-restricted frequency bands.....	14
7.1.	Block diagram of test setup	14
7.2.	Limits	14
7.3.	Test Procedure.....	14
7.4.	Test Result.....	15
7.5.	Original test data	15
8.	Emissions in restricted frequency bands	16
8.1.	Block diagram of test setup	16

8.2.	Limit	17
8.3.	Test Procedure.....	18
8.4.	Test result	19
9.	Band Edge Compliance.....	23
9.1.	Block diagram of test setup	23
9.2.	Limit	23
9.3.	Test Procedure.....	23
9.4.	Test result	23
10.	Power Line Conducted Emission	28
10.1.	Block diagram of test setup	28
10.2.	Power Line Conducted Emission Limits(Class B).....	28
10.3.	Test Procedure.....	28
10.4.	Test Result.....	29
11.	Antenna Requirements	30
11.1.	Limit	30
11.2.	Result.....	30
12.	Test setup photograph	31
13.	Photos of the EUT	32

TEST REPORT DECLARE

Applicant	:	Dongguan Yat Import and Export Limited
Address	:	Room 706-710, Business Plaza, Dalingshan Town, Dongguan City, Guandong, China 523820
Equipment under Test	:	Remote Shutter
Model No.	:	YSS12-13
Trade Mark	:	N/A
Manufacturer	:	Dongguan Yat Import and Export Limited
Address	:	Room 706-710, Business Plaza, Dalingshan Town, Dongguan City, Guandong, China 523820

Test Standard Used:

FCC Rules and Regulations Part 15 Subpart C: 2015.

Test procedure used:

ANSI C63.10:2013, ANSI C63.4:2014

We Declare:

The equipment described above is tested by Dongguan Dongdian Testing Service Co., Ltd and in the configuration tested the equipment complied with the standards specified above. The test results are contained in this test report and Dongguan Dongdian Testing Service Co., Ltd is assumed of full responsibility for the accuracy and completeness of these tests.

After test and evaluation, our opinion is that the equipment provided for test compliance with the requirement of the above FCC standards.

Report No:	DDT-R16Q1202-7E1		
Date of Test:	Dec. 6, 2016 - Dec. 10, 2016	Date of Report:	Dec. 10, 2016

Prepared By:



Leo Liu/Engineer



Kevin Feng/EMC Manager

Note: This report applies to above tested sample only. This report shall not be reproduced in parts without written approval of Dongguan Dongdian Testing Service Co., Ltd.

1. Summary of test results

The EUT have been tested according to the applicable standards as referenced below.		
Description of Test Item	Standard	Results
6dB Bandwidth and 99% Bandwidth	FCC Part 15: 15.247 ANSI C63.10 :2013 ANSI C63.4:2014	PASS
Peak Output Power	FCC Part 15: 15.247 ANSI C63.10 :2013 ANSI C63.4:2014	PASS
Power Spectral Density	FCC Part 15: 15.247 ANSI C63.10 :2013 ANSI C63.4:2014	PASS
Emissions in non-restricted frequency bands	FCC Part 15: 15.247 ANSI C63.10 :2013 ANSI C63.4:2014	PASS
Transmitter spurious emission	FCC Part 15: 15.209 FCC Part 15: 15.247 ANSI C63.10: 2013	PASS
Band Edge Compliance	FCC Part 15: 15.209 FCC Part 15: 15.247 ANSI C63.10: 2013	PASS
Power Line Conducted Emission	FCC Part 15: 15.207 ANSI C63.10: 2013	N/A
Antenna requirement	FCC Part 15: 15.203	PASS
Note: N/A is an abbreviation for Not Applicable.		

2. General test information

2.1. Description of EUT

EUT* Name	: Remote Shutter
Model Number	: YSS12-13
EUT function description	: Please reference user manual of this device
Power supply	: DC 3V from CR 2032 battery
Radio Specification	: Bluetooth V4.0 (BLE)
Operation frequency	: 2402MHz -2480MHz
Modulation	: GFSK
Data rate	: 1Mbps
Antenna Type	: Integrated antenna, maximum PK gain: -3.01dBi
Date of Receipt	: Dec. 6, 2016
Sample Type	: Series production

Note: EUT is the ab. of equipment under test.

2.2. Accessories of EUT

Description of Accessories	Manufacturer	Model number or Type	Serial No.	Other
N/A	N/A	N/A	N/A	N/A

2.3. Assistant equipment used for test

Description of Assistant equipment	Manufacturer	Model number or Type	EMC Compliance	Other
N/A	N/A	N/A	N/A	N/A

2.4. Block diagram of EUT configuration for test



Test software: BlueSuite2.6.0.

The test software was used to control EUT work in Continuous TX mode, and select test channel, wireless mode as blow table:

Tested mode, channel, information		
Mode	Channel	Frequency (MHz)
GFSK	CH0	2402
	CH19	2440
	CH39	2480

Note: According exploratory test, EUT will have maximum output power in those data rate, so those data rate were used for all test. New battery is used during all test.

2.5. Test environment conditions

During the measurement the environmental conditions were within the listed ranges:

Temperature range:	21-25°C
Humidity range:	40-75%
Pressure range:	86-106kPa

2.6. Deviations of test standard

No Deviation.

2.7. Test laboratory

Dongguan Dongdian Testing Service Co., Ltd

Add: No. 17, Zongbu Road 2, Songshan Lake Sci&Tech, Industry Park, Dongguan City, Guangdong Province, China, 523808 Tel: +86-0769-22891499 <http://www.dgddt.com>

FCC Registration Number: 270092 Industry Canada site registration number: 10288A-1

2.8. Measurement uncertainty

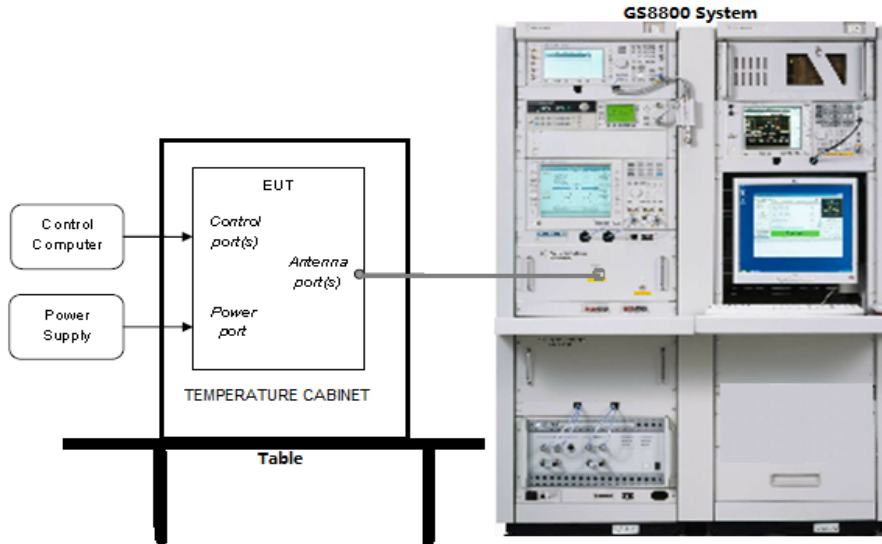
Test Item	Uncertainty
Bandwidth	±1.1%
Peak Output Power(Conducted)(Spectrum analyzer)	0.86dB(10 MHz ≤ f < 3.6GHz);
	1.38dB(3.6GHz ≤ f < 8GHz)
Peak Output Power(Conducted)(Power Sensor)	0.74dB
Power Spectral Density	0.74dB(10 MHz ≤ f < 3.6GHz);
	1.38dB(3.6GHz ≤ f < 8GHz)
Conducted spurious emissions	0.86dB(10 MHz ≤ f < 3.6GHz);
	1.40dB(3.6GHz ≤ f < 8GHz)
	1.66dB(8GHz ≤ f < 22GHz)
Uncertainty for radio frequency (RBW<20KHz)	3×10 ⁻⁸
Temperature	±0.4°C
Humidity	±2%
Uncertainty for Radiation Emission test (30MHz-1GHz)	4.70 dB (Antenna Polarize: V)
	4.84 dB (Antenna Polarize: H)
Uncertainty for Radiation Emission test (1GHz-18GHz)	4.10dB(1-6GHz)
	4.40dB (6GHz-18Gz)
Uncertainty for Power line conduction emission test	3.32dB (150KHz-30MHz)
Note: This uncertainty represents an expanded uncertainty expressed at approximately the 95% confidence level using a coverage factor of k=2.	

3. Equipment used during test

Equipment	Manufacturer	Model No.	Serial No.	Last Cal.	Cal. Interval
RF Connected test					
Spectrum analyzer	R&S	FSU26	1166.1660.26	2016/10/16	1Year
Vertor Signal Generator	Agilent	E8267D	MY52098743	2016/10/20	1Year
Vector Signal Generator	Agilent	N5182A	MY48180737	2016/07/05	1Year
Power Sensor	Agilent	U2021XA	MY55150010	2016/04/18	1Year
Power Sensor	Agilent	U2021XA	MY55150011	2016/04/19	1Year
DC Power Source	MATRIS	MPS-3005L-3	D813058W	2016/10/24	1Year
Attenuator	Mini-Circuits	BW-S10W2	101109	2016/08/18	1Year
RF Cable	Micable	C10-01-01-1	100309	2016/08/18	1Year
Temp&Humi Programmable Chamber	Dongguan Bell	BE-TH-150M3	201208153364	2016/09/23	1Year
Test Software	JS Tonscend	JS1120-2	Ver.2.5	N/A	N/A
USB Data acquisition	Agilent	U2531A	TW55043503	N/A	N/A
Auto control Unit	JS Tonscend	JS0806-2	158060010	N/A	N/A
RE/RF in chamber					
EMI Test Receiver	R&S	ESU8	100316	2016/10/16	1Year
Spectrum analyzer	R&S	FSU26	1166.1660.26	2016/10/16	1Year
Trilog Broadband Antenna	Schwarzbeck	VULB9163	9163-462	2016/10/27	1 Year
Active Loop antenna	Schwarzbeck	FMZB-1519	1519-038	2016/10/27	1 Year
Double Ridged Horn Antenna	R&S	HF907	100276	2016/10/12	1 Year
Pre-amplifier	A.H.	PAM-0118	360	2016/10/16	1 Year
RF Cable	HUBSER	CP-X2	W11.03	2016/10/16	1Year
RF Cable	HUBSER	CP-X1	W12.02	2016/10/16	1 Year
MI Cable	HUBSER	C10-01-01-1M	1091629	2016/10/16	1 Year
Test software	Audix	E3	V 6.11111b	/	/

4. 6dB Bandwidth and 99% Bandwidth

4.1. Block diagram of test setup



4.2. Limits

For direct sequence systems, the minimum 6dB bandwidth shall be at least 500 KHz

4.3. Test Procedure

(1) Connect EUT's antenna output to spectrum analyzer by RF cable.

(2) Set the spectrum analyzer as follows:

RBW:	100KHz
VBW:	300KHz
Detector Mode:	Peak
Sweep time:	auto
Trace mode	Max hold

(3) Allow the trace to stabilize, measure the 6dB and 99% bandwidth of signal.

4.4. Test Result

Mode	Channel	6dB bandwidth Result (MHz)	99% bandwidth Result (MHz)	6 dB width Limit (MHz)	Conclusion
GFSK	CH0	0.856	1.156	>0.5	PASS
	CH19	0.860	1.184	>0.5	PASS
	CH39	0.892	1.208	>0.5	PASS
Test Date : Dec. 6, 2016			Test Engineer : Toby Ren		

4.5. Original test data

Graphs	
LCH	<p style="font-size: small;">Ref 20 dBm -Att 30 dB RBW 100 kHz VBW 300 kHz SWT 5 ms</p> <p style="font-size: x-small;">Marker 4 [T1] -19.90 dBm 2.402476000 GHz</p> <p style="font-size: x-small;">Marker 1 [T1] -19.91 dBm 2.401830000 GHz</p> <p style="font-size: x-small;">Marker 3 [T1] -19.91 dBm 2.401620000 GHz</p> <p style="font-size: x-small;">Temp 1 [T1] 0dBm 2.401476000 GHz</p> <p style="font-size: x-small;">Temp 2 [T1] 0dBm 2.402630000 GHz</p> <p style="font-size: x-small;">Center 2.402 GHz 400 kHz/ Span 4 MHz</p> <p style="font-size: x-small;">Date: 6.DEC.2016 12:09:29</p>
MCH	<p style="font-size: small;">Ref 20 dBm -Att 30 dB RBW 100 kHz VBW 300 kHz SWT 5 ms</p> <p style="font-size: x-small;">Marker 4 [T1] -19.31 dBm 2.440476000 GHz</p> <p style="font-size: x-small;">Marker 1 [T1] -19.32 dBm 2.439830000 GHz</p> <p style="font-size: x-small;">Marker 3 [T1] -19.32 dBm 2.439620000 GHz</p> <p style="font-size: x-small;">Temp 1 [T1] 0dBm 2.439464000 GHz</p> <p style="font-size: x-small;">Temp 2 [T1] 0dBm 2.440644000 GHz</p> <p style="font-size: x-small;">Center 2.44 GHz 400 kHz/ Span 4 MHz</p> <p style="font-size: x-small;">Date: 6.DEC.2016 12:05:18</p>
HCH	<p style="font-size: small;">Ref 20 dBm -Att 30 dB RBW 100 kHz VBW 300 kHz SWT 5 ms</p> <p style="font-size: x-small;">Marker 4 [T1] -18.97 dBm 2.480476000 GHz</p> <p style="font-size: x-small;">Marker 1 [T1] -18.98 dBm 2.479830000 GHz</p> <p style="font-size: x-small;">Marker 3 [T1] -18.98 dBm 2.479620000 GHz</p> <p style="font-size: x-small;">Temp 1 [T1] 0dBm 2.479464000 GHz</p> <p style="font-size: x-small;">Temp 2 [T1] 0dBm 2.480644000 GHz</p> <p style="font-size: x-small;">Center 2.48 GHz 400 kHz/ Span 4 MHz</p> <p style="font-size: x-small;">Date: 6.DEC.2016 12:06:58</p>

5. Maximum Peak Output Power

5.1. Block diagram of test setup

Same with 4.1

5.2. Limits

For systems using digital modulation in the 902-928 MHz, 2400-2483.5 MHz, and 5725-5850 MHz bands: 1 Watt. If transmitting antennas of directional gain greater than 6 dBi are used, the conducted output power from the intentional radiator shall be reduced below the stated values as appropriate, by the amount in dB that the directional gain of the antenna exceeds 6 dBi.

5.3. Test Procedure

(1) Connect EUT's antenna output to spectrum analyzer by RF cable.

(2) Set the spectrum analyzer as follows:

RBW:	1MHz
VBW:	3MHz
Span	>1.5x 6dB bandwidth
Detector Mode:	Peak
Sweep time:	auto
Trace mode	Max hold

(3) Allow the trace to stabilize, Use the instrument's band/channel power measurement function with the band limits set equal to the DTS bandwidth edges measure out the PK output power.

5.4. Test Result

Mode	Freq (MHz)	Peak Output Power (dBm)	Limit (dBm)	Conclusion
GFSK	2402	-11.040	30	PASS
	2440	-11.140	30	PASS
	2480	-10.240	30	PASS
Test Date : Dec. 6, 2016		Test Engineer : Toby Ren		

6. Power Spectral Density

6.1. Block diagram of test setup

Same with 4.1

6.2. Limits

For digitally modulated systems, the power spectral density conducted from the intentional radiator to the antenna shall not be greater than 8dBm in any 3 kHz band during any time interval of continuous transmission.

6.3. Test Procedure

(1) Connect EUT's antenna output to spectrum analyzer by RF cable.

(2) Set the spectrum analyzer as follows:

Center frequency	DTS Channel center frequency
RBW:	$3 \text{ kHz} \leq \text{RBW} \leq 100 \text{ kHz}$
VBW:	$\geq 3\text{RBW}$
Span	1.5times the DTS bandwidth
Detector Mode:	Peak
Sweep time:	auto
Trace mode	Max hold

(3) Allow the trace to stabilize, use the peak marker function to determine the maximum amplitude level within the RBW.

(4) If measured value exceeds limit, reduce RBW (no less than 3 kHz) and repeat.

6.4. Test Result

EUT Set Mode	Channel	Result (dBm)
GFSK	CH0	-13.220
	CH19	-13.290
	CH39	-12.340
Limit: <8dBm/3KHz		Conclusion: PASS
Test Date : Dec. 6, 2016		Test Engineer : Toby Ren

6.5. Original test data

Graphs

LCH	<p>Date: 6.DEC.2016 12:03:47</p>
MCH	<p>Date: 6.DEC.2016 12:05:41</p>
HCH	<p>Date: 6.DEC.2016 12:07:21</p>

7. Emissions in non-restricted frequency bands

7.1. Block diagram of test setup

Same with 4.1

7.2. Limits

In any 100kHz bandwidth outside the frequency bands in which the spread spectrum intentional radiator is operating, the radio frequency power that is produced by the intentional radiator shall be at least 20dB below that in the 100kHz bandwidth within the band that contains the highest level of the desired power.

7.3. Test Procedure

(1) Connect EUT's antenna output to spectrum analyzer by RF cable.

(2) Establish a reference level by using the following procedure:

Center frequency	DTS Channel center frequency
RBW:	100KHz
VBW:	300KHz
Span	1.5times the DTS bandwidth
Detector Mode:	Peak
Sweep time:	auto
Trace mode	Max hold

(3) Allow the trace to stabilize, use the peak marker function to determine the maximum peak power level to establish the reference level.

(4) Set the spectrum analyzer as follows:

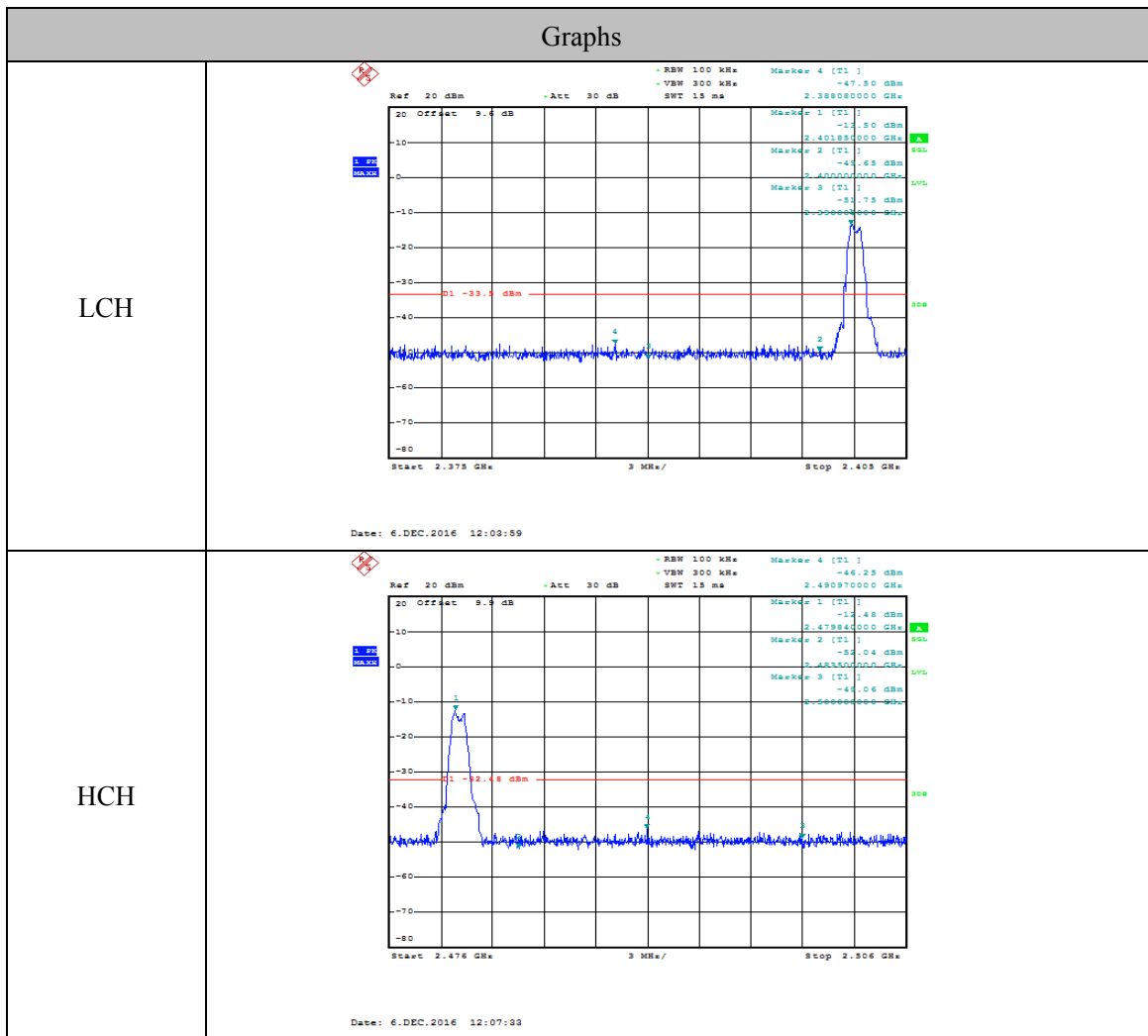
RBW:	100KHz
VBW:	300KHz
Span	Encompass frequency range to be measured
Number of measurement points	$\geq \text{span}/\text{RBW}$
Detector Mode:	Peak
Sweep time:	auto
Trace mode	Max hold

(5) Allow the trace to stabilize, use the peak marker function to determine the maximum amplitude of all unwanted emissions outside of the authorized frequency band

7.4. Test Result

EUT Set Mode	CH or Frequency	Measured Range	Result (dBm)
GFSK	CH0	2.375GHz-2.405GHz	PASS
	CH39	2.476GHz-2.506GHz	PASS
Test Date : Dec. 6, 2016			Test Engineer : Toby Ren

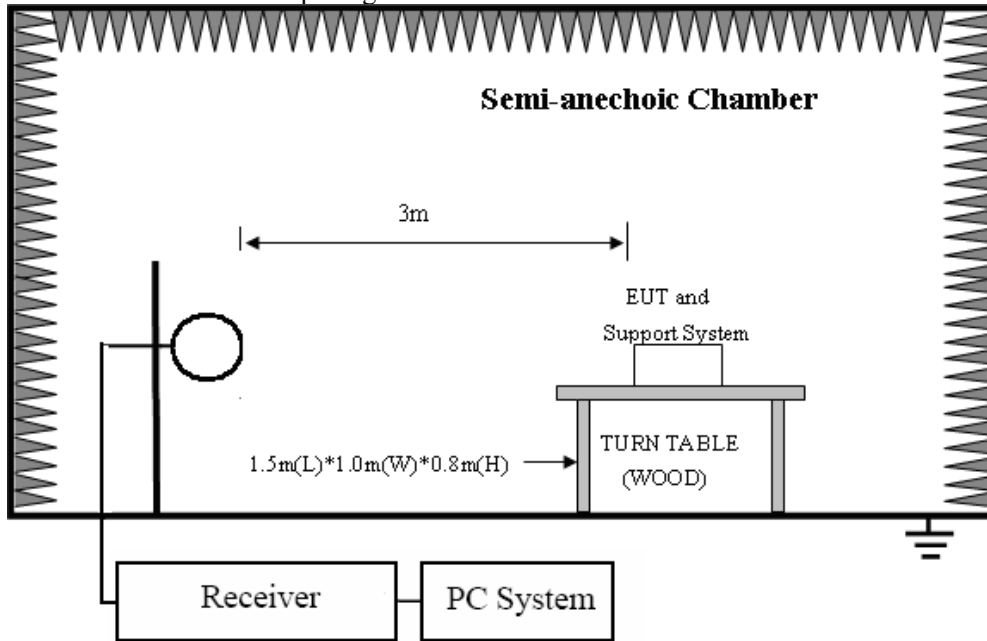
7.5. Original test data



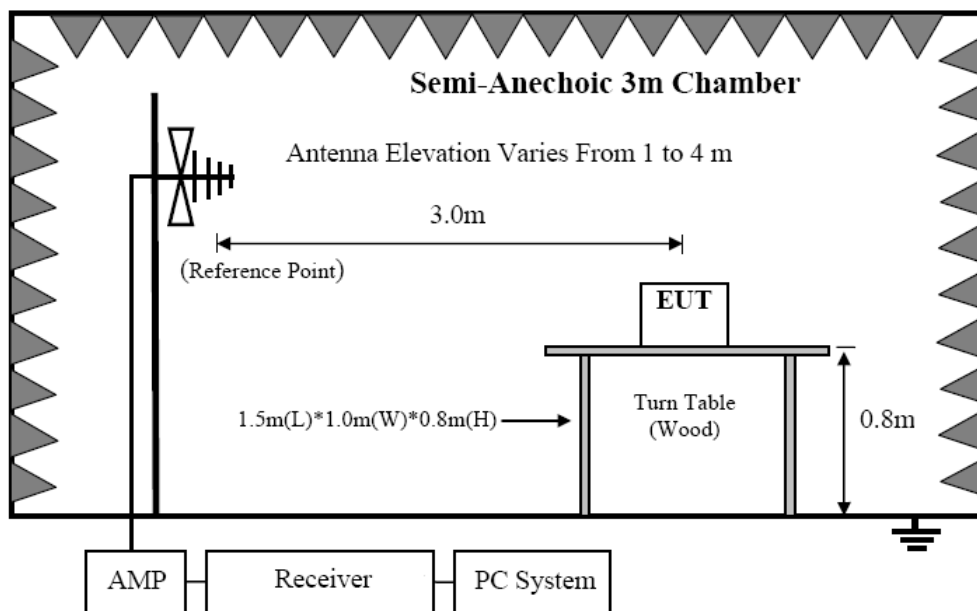
8. Emissions in restricted frequency bands

8.1. Block diagram of test setup

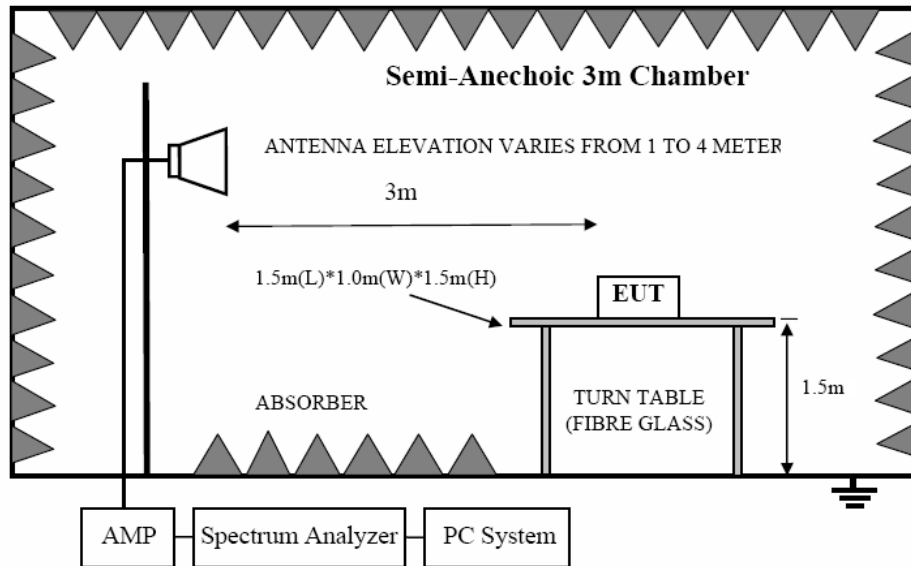
In 3m Anechoic Chamber Test Setup Diagram for 9KHz-30MHz



In 3m Anechoic Chamber Test Setup Diagram for 30MHz-1GHz



In 3m Anechoic Chamber Test Setup Diagram for frequency above 1GHz



Note: For harmonic emissions test a appropriate high pass filter was inserted in the input port of AMP.

8.2. Limit

8.2.1 FCC 15.205 Restricted frequency band

MHz	MHz	MHz	GHz
0.090 - 0.110	16.42 - 16.423	399.9 - 410	4.5 - 5.15
¹ 0.495 - 0.505	16.69475 - 16.69525	608 - 614	5.35 - 5.46
2.1735 - 2.1905	16.80425 - 16.80475	960 - 1240	7.25 - 7.75
4.125 - 4.128	25.5 - 25.67	1300 - 1427	8.025 - 8.5
4.17725 - 4.17775	37.5 - 38.25	1435 - 1626.5	9.0 - 9.2
4.20725 - 4.20775	73 - 74.6	1645.5 - 1646.5	9.3 - 9.5
6.215 - 6.218	74.8 - 75.2	1660 - 1710	10.6 - 12.7
6.26775 - 6.26825	108 - 121.94	1718.8 - 1722.2	13.25 - 13.4
6.31175 - 6.31225	123 - 138	2200 - 2300	14.47 - 14.5
8.291 - 8.294	149.9 - 150.05	2310 - 2390	15.35 - 16.2
8.362 - 8.366	156.52475 - 156.52525	2483.5 - 2500	17.7 - 21.4
8.37625 - 8.38675	156.7 - 156.9	2690 - 2900	22.01 - 23.12
8.41425 - 8.41475	162.0125 - 167.17	3260 - 3267	23.6 - 24.0
12.29 - 12.293	167.72 - 173.2	3332 - 3339	31.2 - 31.8
12.51975 - 12.52025	240 - 285	3345.8 - 3358	36.43 - 36.5
12.57675 - 12.57725	322 - 335.4	3600 - 4400	(²)

8.2.2 FCC 15.209 Limit.

FREQUENCY MHz	DISTANCE Meters	FIELD STRENGTHS LIMIT	
		μV/m	dB(μV)/m
0.009 ~ 0.490	300	2400/F(KHz)	67.6-20log(F)
0.490 ~ 1.705	30	24000/F(KHz)	87.6-20log(F)
1.705 ~ 30.0	30	30	29.54
30 ~ 88	3	100	40.0
88 ~ 216	3	150	43.5
216 ~ 960	3	200	46.0
960 ~ 1000	3	500	54.0

Above 1000	3	74.0 dB(μ V)/m (Peak) 54.0 dB(μ V)/m (Average)
------------	---	---

Note: (1) The emission limits shown in the above table are based on measurements employing a CISPR QP detector except for the frequency bands 9-90KHz, 110-490KHz and above 1000MHz. Radiated emissions limits in these three bands are based on measurements employing an average detector.

(2) At frequencies below 30MHz, measurement may be performed at a distance closer than that specified, and the limit at closer measurement distance can be extrapolated by below formula:

$$\text{Limit}_{3m}(\text{dBuV/m}) = \text{Limit}_{30m}(\text{dBuV/m}) + 40\text{Log}(30m/3m)$$

8.2.3 Limit for this EUT

All the emissions appearing within 15.205 restricted frequency bands shall not exceed the limits shown in 15.209, all the other emissions shall be at least 20dB below the fundamental emissions, or comply with 15.209 limits.

8.3. Test Procedure

- (1) EUT was placed on a non-metallic table, 80 cm above the ground plane inside a semi-anechoic chamber for below 1G and 150 cm above the ground plane inside a semi-anechoic chamber for above 1G.
- (2) Test antenna was located 3m from the EUT on an adjustable mast, and the antenna used as below table.

Test frequency range	Test antenna used
9KHz-30MHz	Active Loop antenna
30MHz-1GHz	Trilog Broadband Antenna
1GHz-18GHz	Double Ridged Horn Antenna(1GHz-18GHz)
18GHz-40GHz	Horn Antenna(18GHz-40GHz)

According ANSI C63.10:2013 clause 6.4.4.2 and 6.5.3, for measurements below 30 MHz, the loop antenna was positioned with its plane vertical from the EUT and rotated about its vertical axis for maximum response at each azimuth position around the EUT. And the loop antenna also be positioned with its plane horizontal at the specified distance from the EUT. The center of the loop is 1 m above the ground. for measurement above 30MHz, the Trilog Broadband Antenna or Horn Antenna was located 3m from EUT, Measurements were made with the antenna positioned in both the horizontal and vertical planes of Polarization, and the measurement antenna was varied from 1 m to 4 m. in height above the reference ground plane to obtain the maximum signal strength.

(3) Below pre-scan procedure was first performed in order to find prominent frequency spectrum radiated emissions from 9KHz to 25GHz:

- (a) Scanning the peak frequency spectrum with the antenna specified in step (3), and the EUT was rotated 360 degree, the antenna height was varied from 1m to 4m(Except loop antenna, it's fixed 1m above ground.)
- (b) Change work frequency or channel of device if practicable.
- (c) Change modulation type of device if practicable.
- (d) Change power supply range from 85% to 115% of the rated supply voltage
- (e) Rotated EUT though three orthogonal axes to determine the attitude of EUT arrangement produces

highest emissions.

Spectrum frequency from 9KHz to 25GHz (tenth harmonic of fundamental frequency) was investigated, and no any obvious emission were detected from 9KHz to 30MHz and 18GHz to 25GHz so below final test was performed with frequency range from 30MHz to 18GHz.

- (4) For final emissions measurements at each frequency of interest, the EUT was rotated and the antenna height was varied between 1m and 4m in order to maximize the emission. Measurements in both horizontal and vertical polarities were made and the data was recorded. In order to find the maximum emission, the relative positions of equipments and all of the interface cables were changed according to ANSI C63.10 2013 on Radiated Emission test.
- (5) The emissions from 9KHz to 1GHz were measured based on CISPR QP detector except for the frequency bands 9-90KHz, 110-490KHz, for emissions from 9KHz-90KHz, 110KHz-490KHz and above 1GHz were measured based on average detector, for emissions above 1GHz, peak emissions also be measured and need comply with Peak limit.
- (6) The emissions from 9KHz to 1GHz, QP or average values were measured with EMI receiver with below RBW

Frequency band	RBW
9KHz-150KHz	200Hz
150KHz-30MHz	9KHz
30MHz-1GHz	120KHz

For emissions above 1GHz, both Peak and Average level were measured with Spectrum Analyzer, and the RBW is set at 1MHz, VBW is set at 3MHz for Peak measure; RBW is set at 1MHz, VBW is set at 3MHz for Average measure (according ANSI C63.10:2013 clause 4.2.3.2.3 procedure for average measure).

- (8) X axis, Y axis, Z axis are tested, and worse setup X axis is reported.

8.4. Test result

PASS. (See below detailed test result)

All the emissions except fundamental emission from 9KHz to 25GHz were comply with 15.209 limit.

Note1: According exploratory test no any obvious emission were detected from 9KHz to 30MHz and 18GHz to 25GHz, so the final test was performed with frequency range from 30MHz to 18GHz and recorded in below.

Note2: For emissions below 1GHz, according exploratory explorer test, when change Tx mode and channel, have no distinct influence on emissions level, so for emissions below 1GHz, the final test was only performed with EUT working in GFSK, Tx 2440MHz mode.

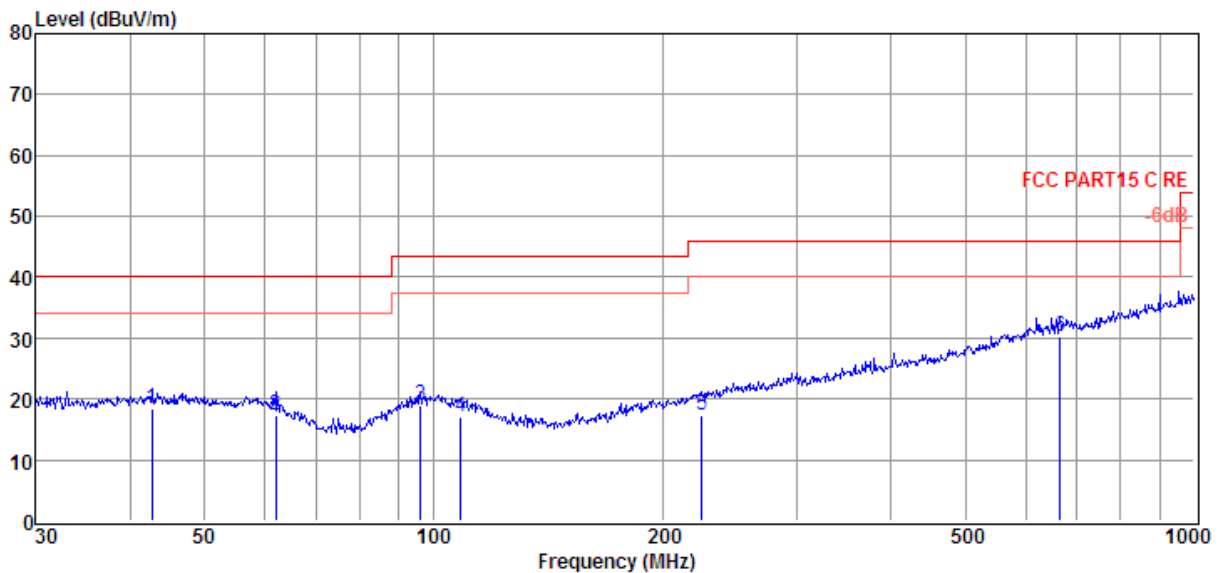
Note3: For emissions above 1GHz. If peak results comply with AV limit, AV Result is deemed to comply with AV limit.

Radiated Emission test (below 1GHz)

TR-4-E-009 Radiated Emission Test Result

Test Site	: DDT 3m Chamber	D:\2016 Report Data\16Q1202-7\RE.EM6
Test Date	: 2016-12-08	Tested By : Jerry
EUT	: Remote Shutter	Model Number : YSS12-13
Power Supply	: DC 3V	Test Mode : Tx mode
Condition	: Temp:24.5°C,Humi:55%, Press:100.1kPa	Antenna/Distance : 2016 VULB9163 1#/3m/VERTICAL
Memo	:	

Data: 1



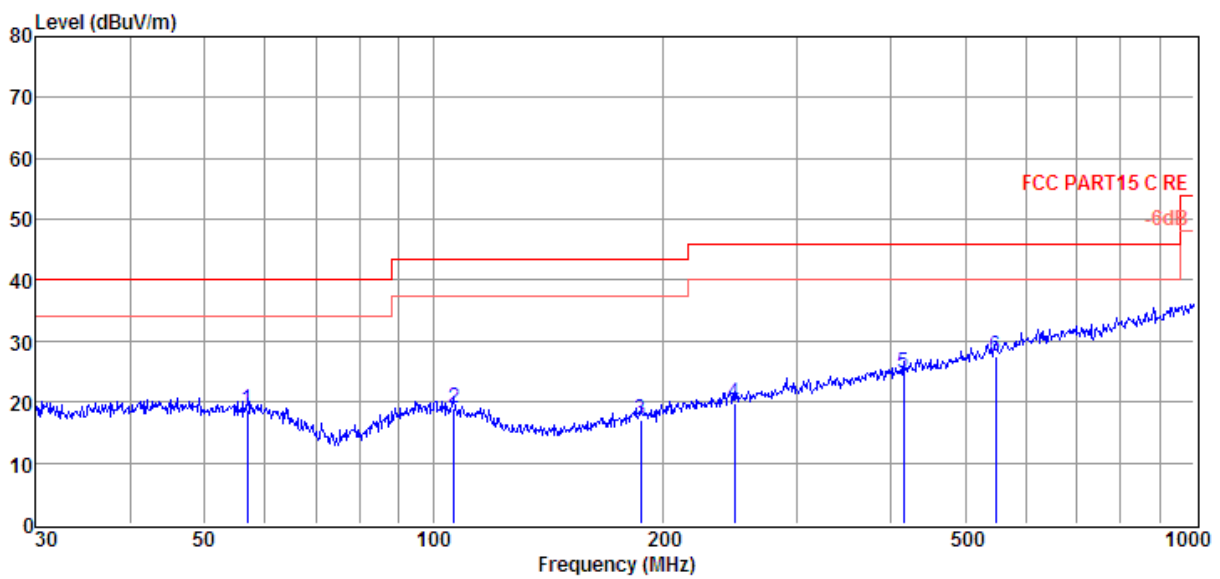
Item (Mark)	Freq. (MHz)	Read Level (dBμV)	Antenna Factor (dB/m)	Cable Loss (dB)	Result Level (dBμV/m)	Limit Line (dBμV/m)	Over Limit (dB)	Detector	Polarization
1	42.60	2.26	12.47	3.82	18.55	40.00	-21.45	QP	VERTICAL
2	62.00	2.50	10.80	4.00	17.30	40.00	-22.70	QP	VERTICAL
3	96.10	2.89	11.69	4.27	18.85	43.50	-24.65	QP	VERTICAL
4	108.65	1.55	11.16	4.35	17.06	43.50	-26.44	QP	VERTICAL
5	225.31	0.76	11.51	5.02	17.29	46.00	-28.71	QP	VERTICAL
6	665.80	3.75	19.72	6.72	30.19	46.00	-15.81	QP	VERTICAL

- Note: 1. Result Level = Read Level + Antenna Factor + Cable loss.
 2. If Peak Result complies with QP limit, QP Result is deemed to comply with QP limit.
 3. Test setup: RBW: 120 kHz, VBW: 300 kHz, Sweep time: auto.

TR-4-E-009 Radiated Emission Test Result

Test Site : DDT 3m Chamber D:\2016 Report Data\16Q1202-7\RE.EM6
Test Date : 2016-12-08 **Tested By** : Jerry
EUT : Remote Shutter **Model Number** : YSS12-13
Power Supply : DC 3V **Test Mode** : Tx mode
Condition : Temp:24.5°C,Humi:55%,
 : Press:100.1kPa **Antenna/Distance** : 2016 VULB9163 1#/3m/HORIZONTAL
Memo :

Data: 2



Item (Mark)	Freq. (MHz)	Read Level (dBμV)	Antenna Factor (dB/m)	Cable Loss (dB)	Result Level (dBμV/m)	Limit Line (dBμV/m)	Over Limit (dB)	Detector	Polarization
1	56.99	3.12	11.65	3.95	18.72	40.00	-21.28	QP	HORIZONTAL
2	106.39	3.19	11.43	4.34	18.96	43.50	-24.54	QP	HORIZONTAL
3	187.10	2.49	9.80	4.82	17.11	43.50	-26.39	QP	HORIZONTAL
4	248.55	2.41	12.30	5.14	19.85	46.00	-26.15	QP	HORIZONTAL
5	414.72	2.70	16.09	5.86	24.65	46.00	-21.35	QP	HORIZONTAL
6	549.02	2.96	18.29	6.34	27.59	46.00	-18.41	QP	HORIZONTAL

- Note: 1. Result Level = Read Level + Antenna Factor + Cable loss.
 2. If Peak Result complies with QP limit, QP Result is deemed to comply with QP limit.
 3. Test setup: RBW: 120 kHz, VBW: 300 kHz, Sweep time: auto.

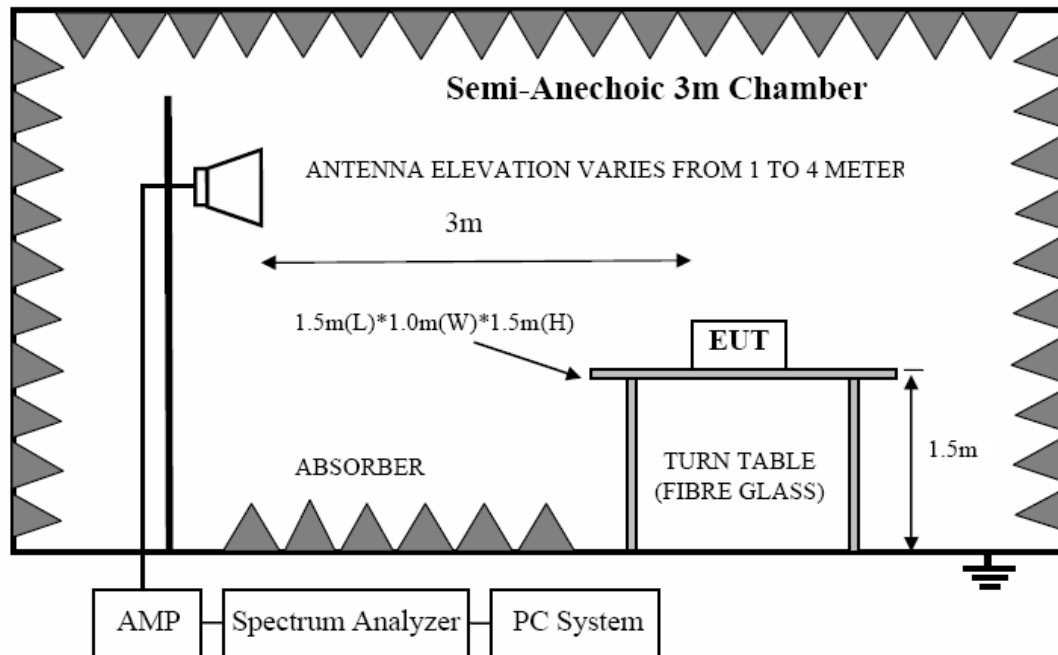
Radiated Emission test (above 1GHz)

Freq (MHz)	Read level (dB μ V)	Antenna Factor (dB/m)	PRM Factor (dB)	Cable Loss (dB)	Result Level (dB μ V/m)	Limit (dB μ V/m)	Margin (dB)	Detector type	Polarization
GFSK Tx mode 2402MHz									
3541.00	38.02	32.03	29.45	7.32	47.92	74.00	-26.08	Peak	VERTICAL
3954.00	36.78	33.27	29.06	7.58	48.57	74.00	-25.43	Peak	VERTICAL
4804.00	31.58	33.74	29.32	8.48	44.48	54.00	-9.52	Average	VERTICAL
4804.00	42.71	33.74	29.32	8.48	55.61	74.00	-18.39	Peak	VERTICAL
6047.00	35.51	35.08	29.23	9.71	51.07	74.00	-22.93	Peak	VERTICAL
6733.00	35.72	35.99	30.18	10.17	51.70	74.00	-22.30	Peak	VERTICAL
3527.00	37.93	31.99	29.47	7.32	47.77	74.00	-26.23	Peak	HORIZONTAL
3877.00	37.43	33.05	29.11	7.53	48.90	74.00	-25.10	Peak	HORIZONTAL
4804.00	45.11	33.74	29.32	8.48	58.01	74.00	-15.99	Peak	HORIZONTAL
4804.00	35.39	35.09	29.23	9.71	50.96	54.00	-3.04	Average	HORIZONTAL
6873.00	35.40	36.10	30.30	10.31	51.51	74.00	-22.49	Peak	HORIZONTAL
GFSK Tx mode 2440MHz									
3527.00	37.94	31.99	29.47	7.32	47.78	74.00	-26.22	Peak	VERTICAL
3933.00	37.64	33.21	29.07	7.57	49.35	74.00	-24.65	Peak	VERTICAL
4880.00	32.05	33.72	29.33	8.56	45.00	54.00	-9.00	Average	VERTICAL
4880.00	41.52	33.72	29.33	8.56	54.47	74.00	-19.53	Peak	VERTICAL
5774.00	35.29	34.87	29.21	9.47	50.42	74.00	-23.58	Peak	VERTICAL
6936.00	35.48	36.15	30.34	10.37	51.66	74.00	-22.34	Peak	VERTICAL
2799.00	38.24	31.13	30.10	6.53	45.80	74.00	-28.20	Peak	HORIZONTAL
3254.00	39.18	31.81	30.00	7.03	48.02	74.00	-25.98	Peak	HORIZONTAL
3940.00	39.00	33.23	29.07	7.58	50.74	74.00	-23.26	Peak	HORIZONTAL
4880.00	31.59	33.72	29.33	8.56	44.54	54.00	-9.46	Average	HORIZONTAL
4880.00	44.53	33.72	29.33	8.56	57.48	74.00	-16.52	Peak	HORIZONTAL
6068.00	36.07	35.11	29.24	9.72	51.66	74.00	-22.34	Peak	HORIZONTAL
GFSK Tx mode 2480MHz									
3240.00	39.08	31.80	30.01	7.03	47.90	74.00	-26.10	Peak	VERTICAL
3408.00	39.53	31.87	29.77	7.21	48.84	74.00	-25.16	Peak	VERTICAL
4444.00	36.95	33.76	29.18	8.10	49.63	74.00	-24.37	Peak	VERTICAL
4960.00	32.64	33.71	29.34	8.63	45.64	54.00	-8.36	Average	VERTICAL
4960.00	40.14	33.71	29.34	8.63	53.14	74.00	-20.86	Peak	VERTICAL
6124.00	35.20	35.20	29.29	9.74	50.85	74.00	-23.15	Peak	VERTICAL
3079.00	38.72	31.73	30.15	6.86	47.16	74.00	-26.84	Peak	HORIZONTAL
3387.00	38.67	31.86	29.81	7.19	47.91	74.00	-26.09	Peak	HORIZONTAL
4374.00	36.19	33.70	29.14	8.02	48.77	74.00	-25.23	Peak	HORIZONTAL
4960.00	32.59	33.71	29.34	8.63	45.59	54.00	-8.41	Average	HORIZONTAL
4960.00	42.33	33.71	29.34	8.63	55.33	74.00	-18.67	Peak	HORIZONTAL
6054.00	35.73	35.09	29.23	9.71	51.30	74.00	-22.70	Peak	HORIZONTAL
Result: Pass									
Test Date : Dec. 7, 2016					Test Engineer : Toby Ren				

Note: Result Level = Read Level + Antenna Factor + Cable loss - PRM Factor.

9. Band Edge Compliance

9.1. Block diagram of test setup



9.2. Limit

All the lower and upper band-edges emissions appearing within 2310MHz to 2390MHz and 2483.5MHz to 2500MHz restricted frequency bands shall not exceed the limits shown in 15.209, all the other emissions outside operation frequency band 2400MHz to 2483.5MHz and 5725MHz to 5850MHz shall be at least 20dB below the fundamental emissions, or comply with 15.209 limits.

9.3. Test Procedure

Same with clause 8.3 except change investigated frequency range from 2310MHz to 2415MHz and 2475MHz to 2500MHz.

Remark: All restriction band have been tested, and only the worse case is shown in report.

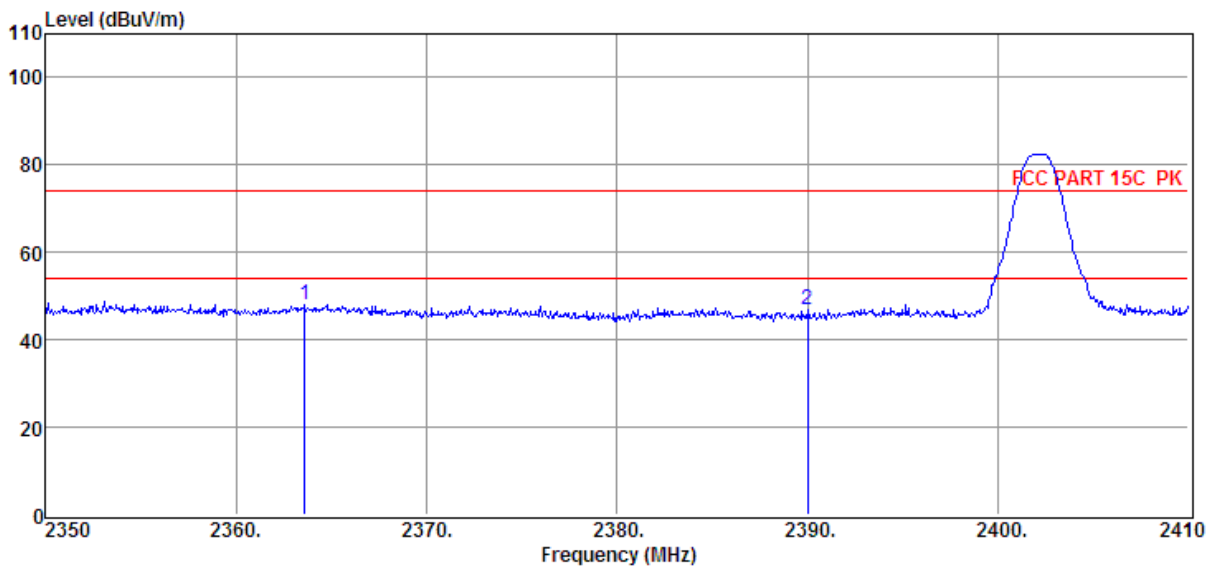
9.4. Test result

PASS. (See below detailed test result)

TR-4-E-009 Radiated Emission Test Result

Test Site	: DDT 3m Chamber	D:\2016 Report Data\16Q1202-7\RF.EM6
Test Date	: 2016-12-07	Tested By : Jerry
EUT	: Remote Shutter	Model Number : YSS12-13
Power Supply	: DC 3V	Test Mode : Tx mode GFSK 2402MHz
Condition	: Temp:24.5°C,Humi:55%, Press:100.1kPa	Antenna/Distance : 2016 HF907/3m/HORIZONTAL
Memo	: BLE	

Data: 3



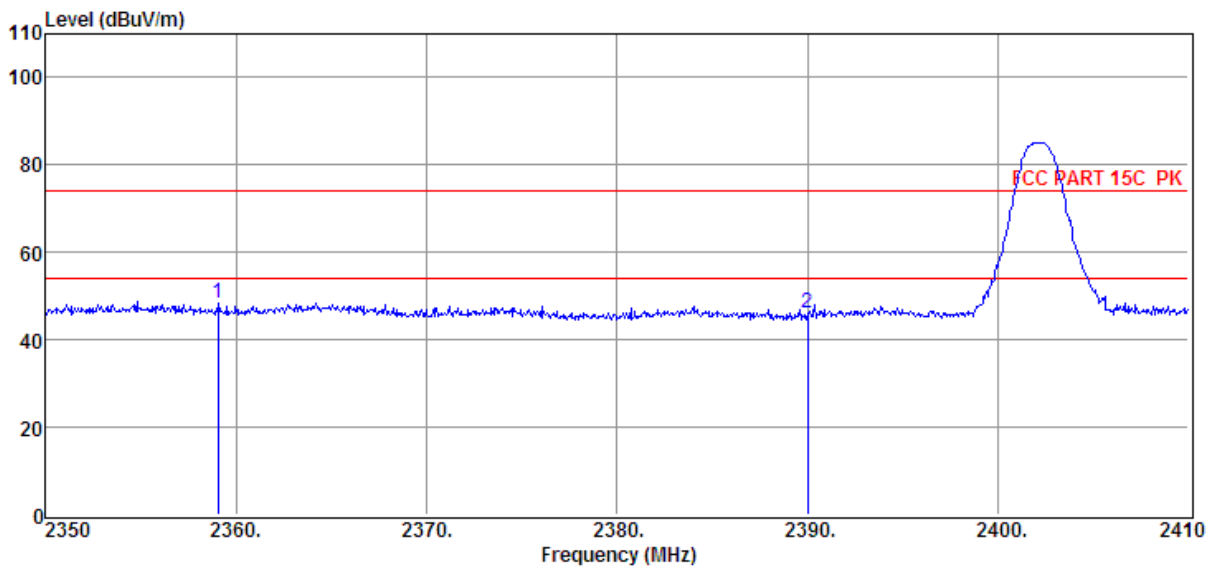
Item (Mark)	Freq. (MHz)	Read Level (dBμV)	Antenna Factor (dB/m)	PRM Factor dB	Cable Loss dB	Result Level (dBμV/m)	Limit Line (dBμV/m)	Over Limit (dB)	Detector	Polarization
1	2363.62	41.88	29.67	29.37	5.98	48.16	74.00	-25.84	Peak	HORIZONTAL
2	2390.02	40.50	29.78	29.41	6.01	46.88	74.00	-27.12	Peak	HORIZONTAL

- Note: 1. Result Level = Read Level + Antenna Factor + Cable loss - PRM Factor.
 2. If Peak Result complies with AV limit, AV Result is deemed to comply with AV limit.
 3. Test setup: RBW: 1 MHz, VBW: 3 MHz, Sweep time: auto.

TR-4-E-009 Radiated Emission Test Result

Test Site	: DDT 3m Chamber	D:\2016 Report Data\16Q1202-7\RF.EM6
Test Date	: 2016-12-07	Tested By : Jerry
EUT	: Remote Shutter	Model Number : YSS12-13
Power Supply	: DC 3V	Test Mode : Tx mode GFSK 2402MHz
Condition	: Temp:24.5°C,Humi:55%, Press:100.1kPa	Antenna/Distance : 2016 HF907/3m/VERTICAL
Memo	: BLE	

Data: 4



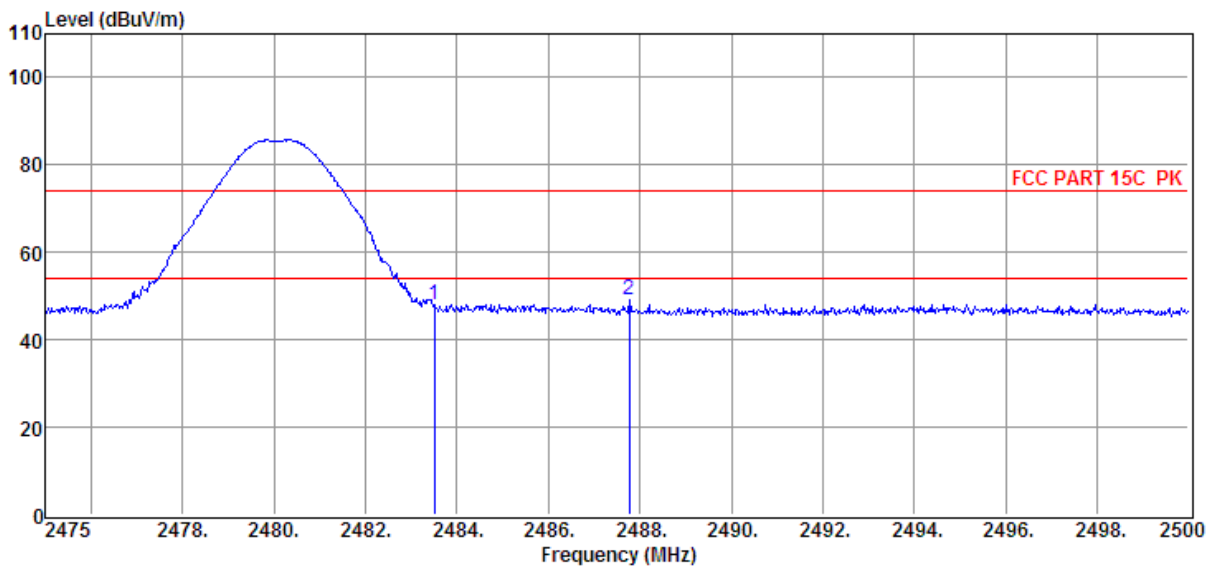
Item (Mark)	Freq. (MHz)	Read Level (dBμV)	Antenna Factor (dB/m)	PRM Factor dB	Cable Loss dB	Result Level (dBμV/m)	Limit Line (dBμV/m)	Over Limit (dB)	Detector	Polarization
1	2359.06	42.21	29.65	29.35	5.98	48.49	74.00	-25.51	Peak	VERTICAL
2	2390.02	39.61	29.78	29.41	6.01	45.99	74.00	-28.01	Peak	VERTICAL

- Note: 1. Result Level = Read Level + Antenna Factor + Cable loss - PRM Factor.
 2. If Peak Result complies with AV limit, AV Result is deemed to comply with AV limit.
 3. Test setup: RBW: 1 MHz, VBW: 3 MHz, Sweep time: auto.

TR-4-E-009 Radiated Emission Test Result

Test Site : DDT 3m Chamber D:\2016 Report Data\16Q1202-7\RF.EM6
Test Date : 2016-12-07 **Tested By** : Jerry
EUT : Remote Shutter **Model Number** : YSS12-13
Power Supply : DC 3V **Test Mode** : Tx mode GFSK 2480MHz
Condition : Temp:24.5°C,Humi:55%,
 Press:100.1kPa **Antenna/Distance** : 2016 HF907/3m/VERTICAL
Memo : BLE

Data: 9



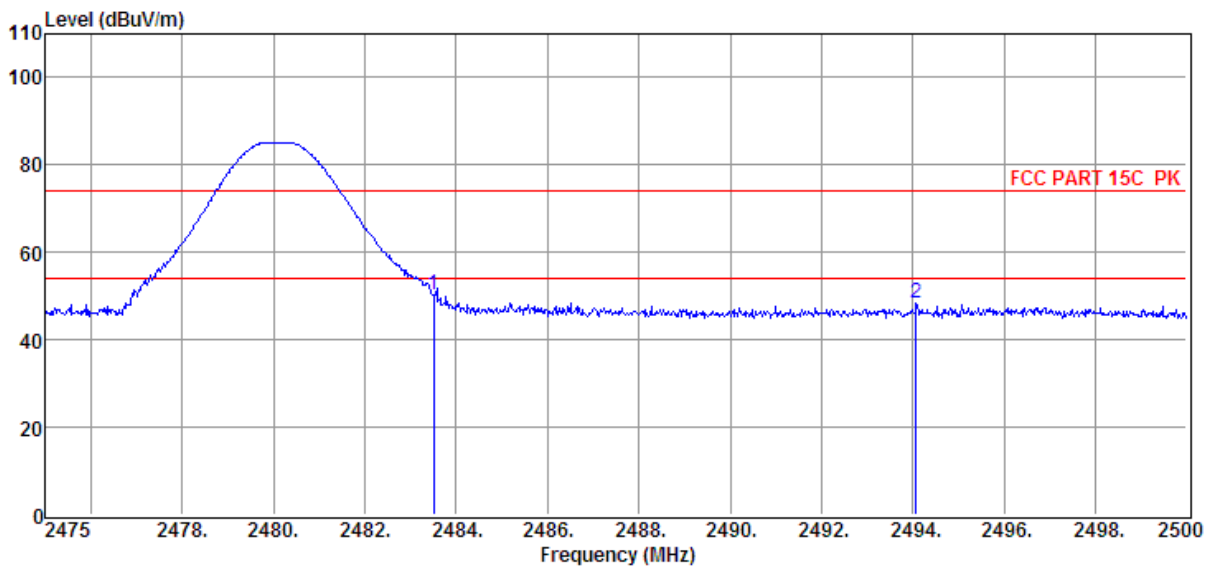
Item (Mark)	Freq. (MHz)	Read Level (dBμV)	Antenna Factor (dB/m)	PRM Factor (dB)	Cable Loss (dB)	Result Level (dBμV/m)	Limit Line (dBμV/m)	Over Limit (dB)	Detector	Polarization
1	2483.50	41.61	30.14	29.71	6.15	48.19	74.00	-25.81	Peak	VERTICAL
2	2487.78	42.68	30.15	29.71	6.15	49.27	74.00	-24.73	Peak	VERTICAL

Note: 1. Result Level = Read Level + Antenna Factor + Cable loss - PRM Factor.
 2. If Peak Result complies with AV limit, AV Result is deemed to comply with AV limit.
 3. Test setup: RBW: 1 MHz, VBW: 3 MHz, Sweep time: auto.

TR-4-E-009 Radiated Emission Test Result

Test Site	: DDT 3m Chamber	D:\2016 Report Data\16Q1202-7\RF.EM6
Test Date	: 2016-12-07	Tested By : Jerry
EUT	: Remote Shutter	Model Number : YSS12-13
Power Supply	: DC 3V	Test Mode : Tx mode GFSK 2480MHz
Condition	: Temp:24.5°C,Humi:55%, Press:100.1kPa	Antenna/Distance : 2016 HF907/3m/HORIZONTAL
Memo	: BLE	

Data: 10

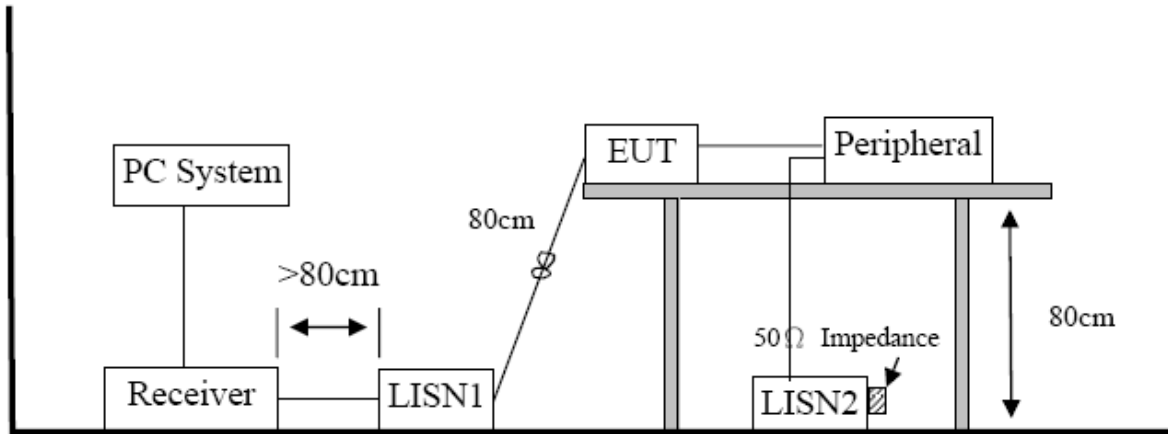


Item (Mark)	Freq. (MHz)	Read Level (dBμV)	Antenna Factor (dB/m)	PRM Factor dB	Cable Loss dB	Result Level (dBμV/m)	Limit Line (dBμV/m)	Over Limit (dB)	Detector	Polarization
1	2483.50	43.84	30.14	29.71	6.15	50.42	74.00	-23.58	Peak	HORIZONTAL
2	2494.08	41.84	30.18	29.73	6.15	48.44	74.00	-25.56	Peak	HORIZONTAL

Note: 1. Result Level = Read Level + Antenna Factor + Cable loss - PRM Factor.
 2. If Peak Result complies with AV limit, AV Result is deemed to comply with AV limit.
 3. Test setup: RBW: 1 MHz, VBW: 3 MHz, Sweep time: auto.

10. Power Line Conducted Emission

10.1. Block diagram of test setup



10.2. Power Line Conducted Emission Limits(Class B)

Frequency	Quasi-Peak Level dB(μ V)	Average Level dB(μ V)
150kHz ~ 500kHz	66 ~ 56*	56 ~ 46*
500kHz ~ 5MHz	56	46
5MHz ~ 30MHz	60	50

Note 1: * Decreasing linearly with logarithm of frequency.

Note 2: The lower limit shall apply at the transition frequencies.

10.3. Test Procedure

The EUT and Support equipment, if needed, were put placed on a non-metallic table, 80cm above the ground plane.

Configuration EUT to simulate typical usage as described in clause 2.4 and test equipment as described in clause 10.2 of this report.

All I/O cables were positioned to simulate typical actual usage as per ANSI C63.4.

All support equipment power received from a second LISN.

Emissions were measured on each current carrying line of the EUT using an EMI Test Receiver connected to the LISN powering the EUT.

The Receiver scanned from 150 kHz to 30MHz for emissions in each of the test modes.

During the above scans, the emissions were maximized by cable manipulation.

The test mode(s) described in clause 2.4 were scanned during the preliminary test.

After the preliminary scan, we found the test mode producing the highest emission level.

The EUT configuration and worse cable configuration of the above highest emission levels were recorded for reference of the final test.

EUT and support equipment were set up on the test bench as per the configuration with highest emission level in the preliminary test.

A scan was taken on both power lines, Neutral and Line, recording at least the six highest emissions.

Emission frequency and amplitude were recorded into a computer in which correction factors were used to calculate the emission level and compare reading to the applicable limit.

The test data of the worst-case condition(s) was recorded.

The bandwidth of test receiver is set at 9 KHz.

10.4. Test Result

Not Applicable

11. Antenna Requirements

11.1. Limit

For intentional device, according to FCC 47 CFR Section 15.203, an intentional radiator shall be designed to ensure that no antenna other than that furnished by the responsible party shall be used with the device. And according to FCC 47 CFR Section 15.247 (b), if transmitting antennas of directional gain greater than 6dBi are used, the power shall be reduced by the amount in dB that the directional gain of the antenna exceeds 6dBi.

11.2. Result

The antennas used for this product is integrated antenna and that no antenna other than that furnished by the responsible party shall be used with the device, the maximum peak gain of the transmit antenna is only -3.01dBi.

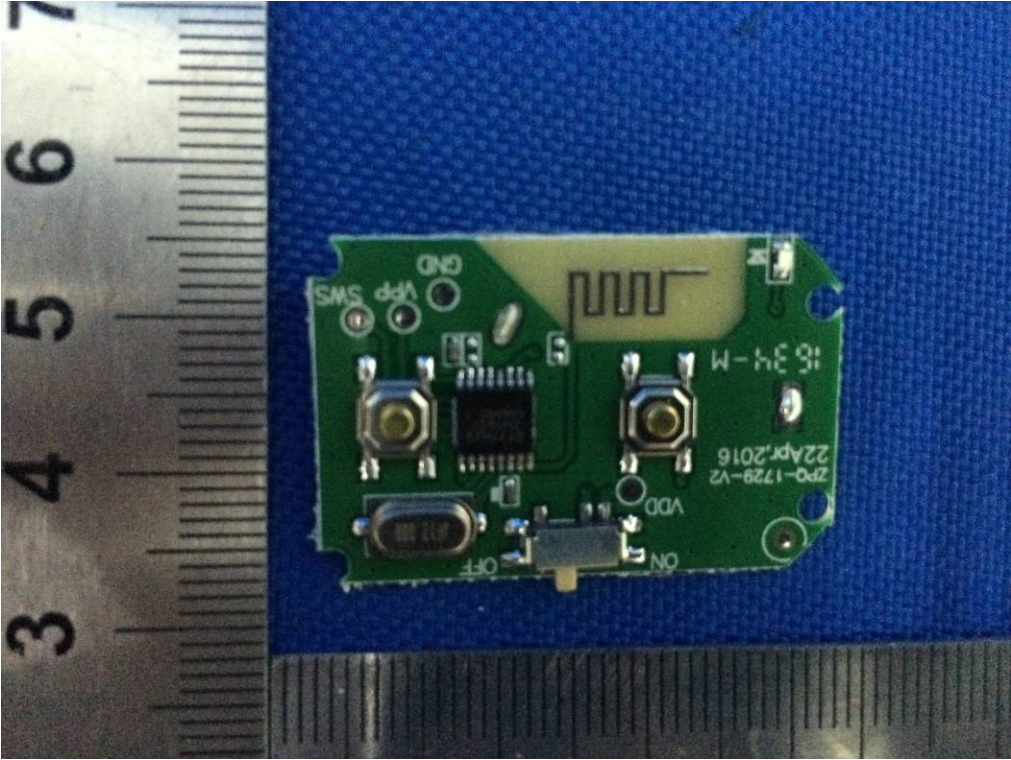
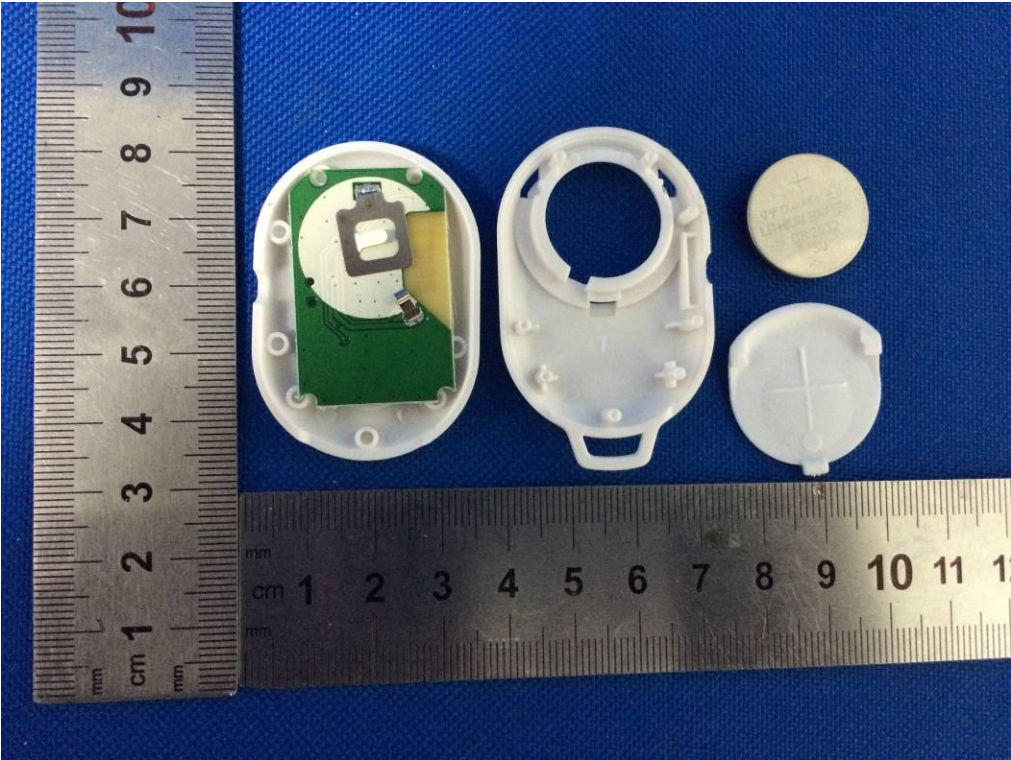
12. Test setup photograph

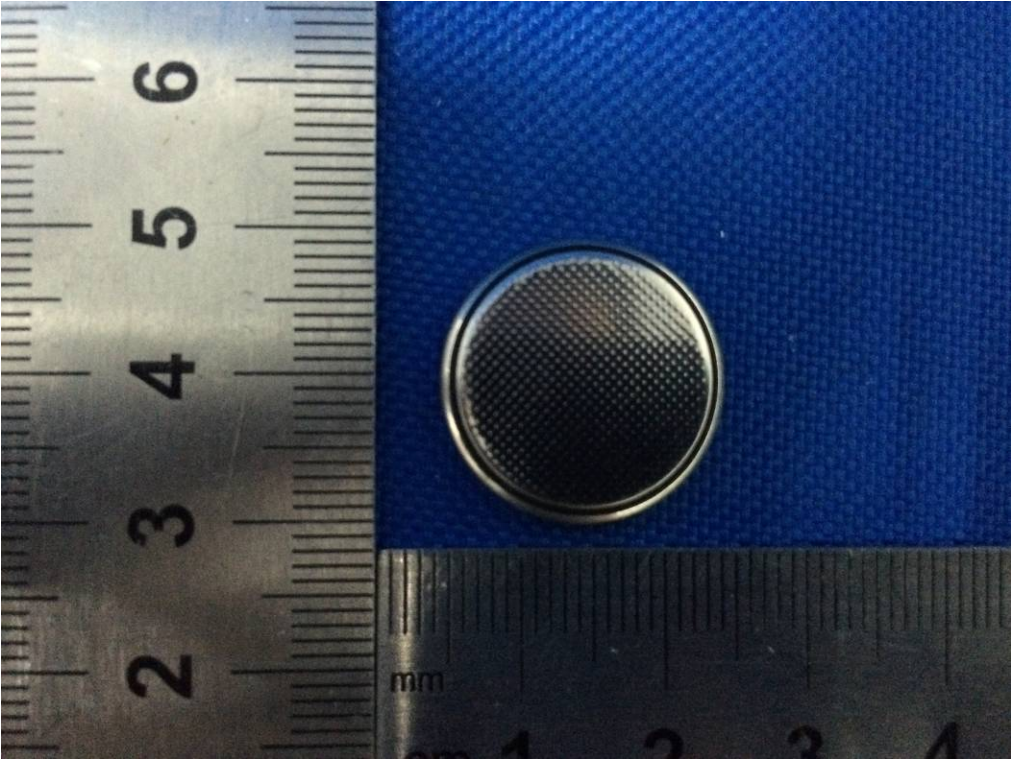
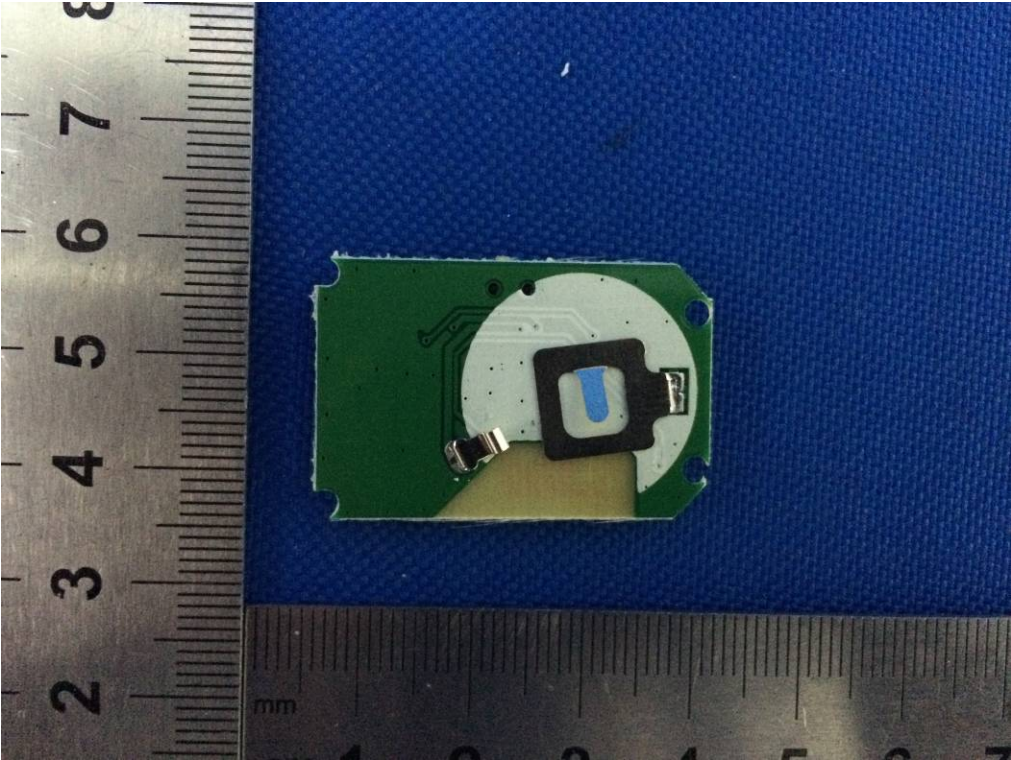


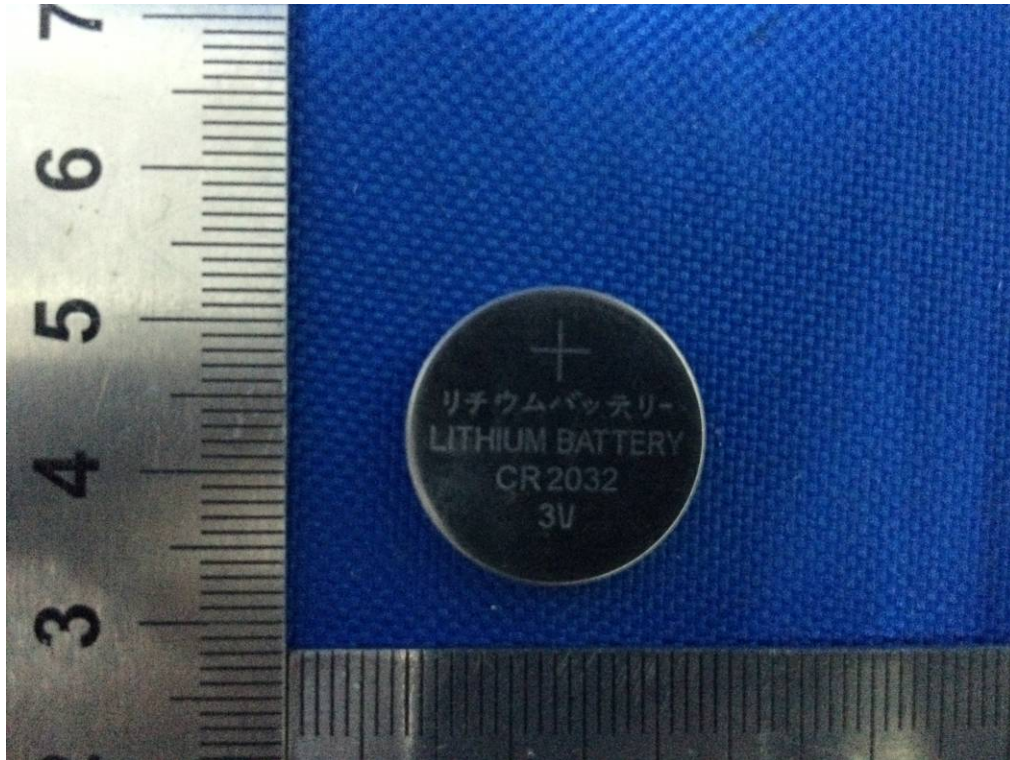
13. Photos of the EUT











END OF REPORT