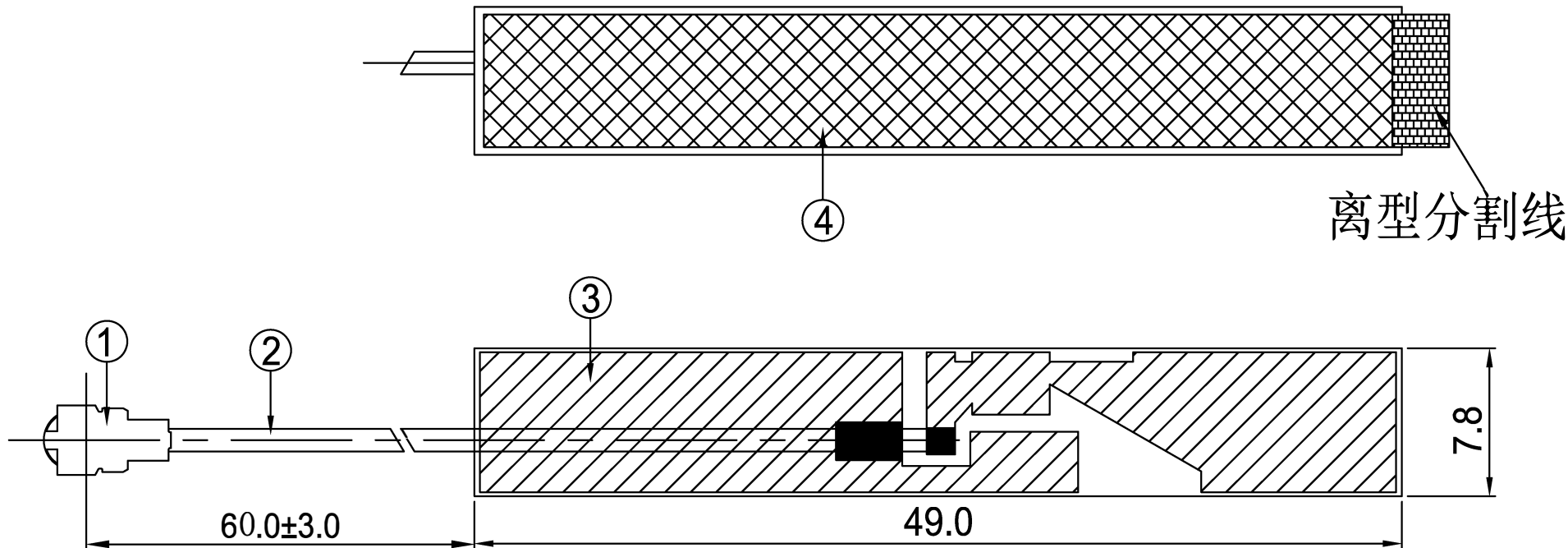


RoHS
Compatible

CUSTOMER	空气管家
PART NO	Arix-K8

REV.	DESCRIPTION	DATE
△	首次发行	2016.08.25



4	Paster	48.0*7.0MM	3M	PAS100XXA.P01	1
3	PCB Green	49.0*7.8*T0.6MM	PCB	PCB100XXA.P01	1
2	Coaxial Cable	O.D.1.13Gray	O.D.1.13	COA100XXA.P01	1
1	Mini Connector	Au Plated 1代	Cu	TER10001A.P01	1
NO	PART NAME	DESCRIPTION	Material	Part Number	Q.TY

Shenzhen Jinliyuanxing Electronics Co., Ltd					
PART NAME: WiFi Antenna L=67mm					
PART NO.: GX029W.300053.W01			DATE: 2016-08-25		
APPROVED BY	CHECKED BY	DESIGNED BY	 UNITS: mm SCALE: 1/1 REVISION: A	Tolerance	
陈国强	刘妮	汪婷		X.X ±0.50	
				X.XX±0.15	
					X° ±3°

Antenna Test Report

Contents:

1. Antenna Profile

2. Antenna Performance Test

3. Antenna Passive Test

Tester : Tang Guohao

Approval : Chen Guoqiang

Date : 2022 / 9 / 2

天线规格

Antenna Specification

Electrical Properties	
Model Name	W01
Frequency	2400~2484MHz
Impedance	50 Ohm Nominal
V.S.W.R	1.92: 1 Max
Return Loss	-10 dB Max
Radiation	Omni-directional
Gain (Peak)	3.2dBi
Polarization	Linear
Connector	1代IPEX
Physical Properties	
Antenna Material	PCB
Cable Type	O.D.1.13mm//L=67mm
Operating Temp.	-10 ~ +60 °C
Storage Temp.	-10 ~ +70 °C
Cable Color	Gray
Manufacturer	Shenzhen Jinliyuanxing Electronics Co., Ltd
Frequency band	WiFi 2.4G 802.11b/ g/ n(HT20):2412~2472 MHz WiFi 2.4G 802.11n(HT40): 2422~2462 MHz

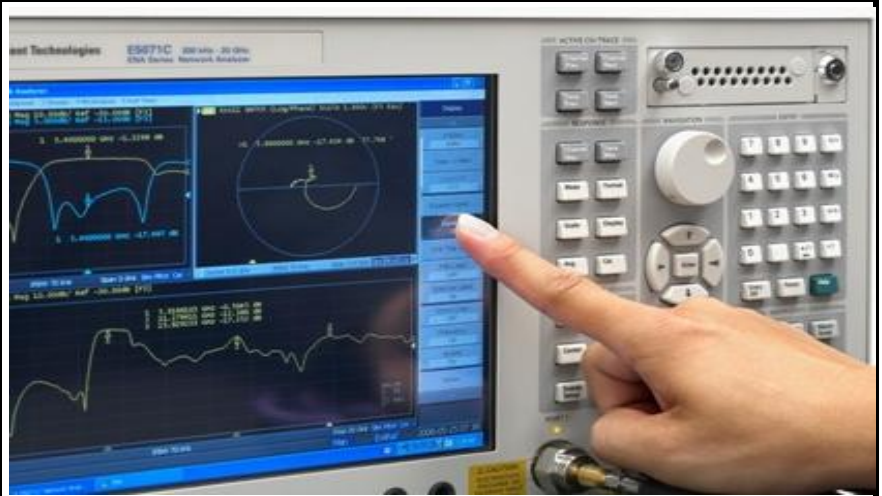
1. Antenna Profile

*WiFi
Antenna*

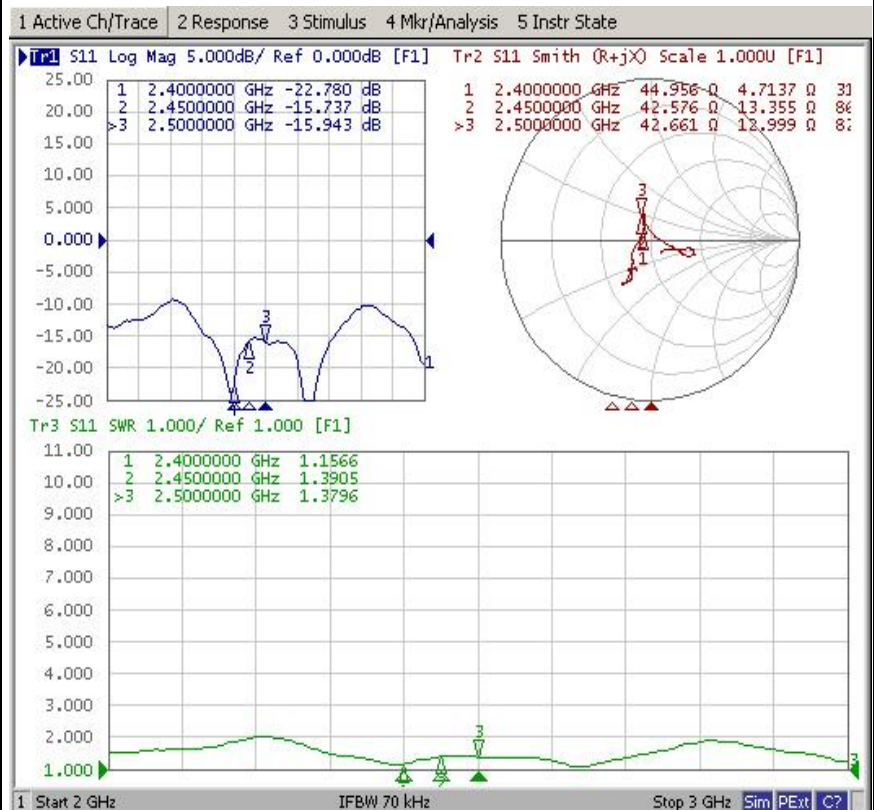


2. Antenna Performance Test

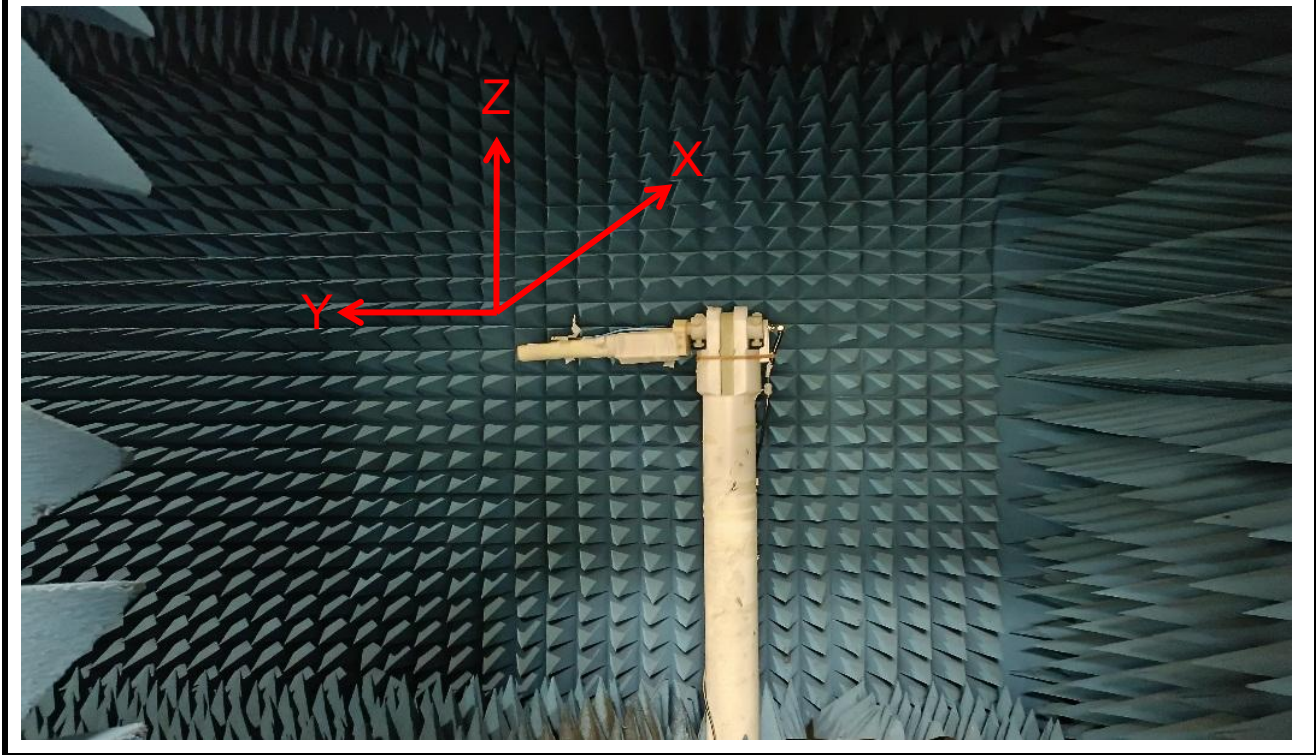
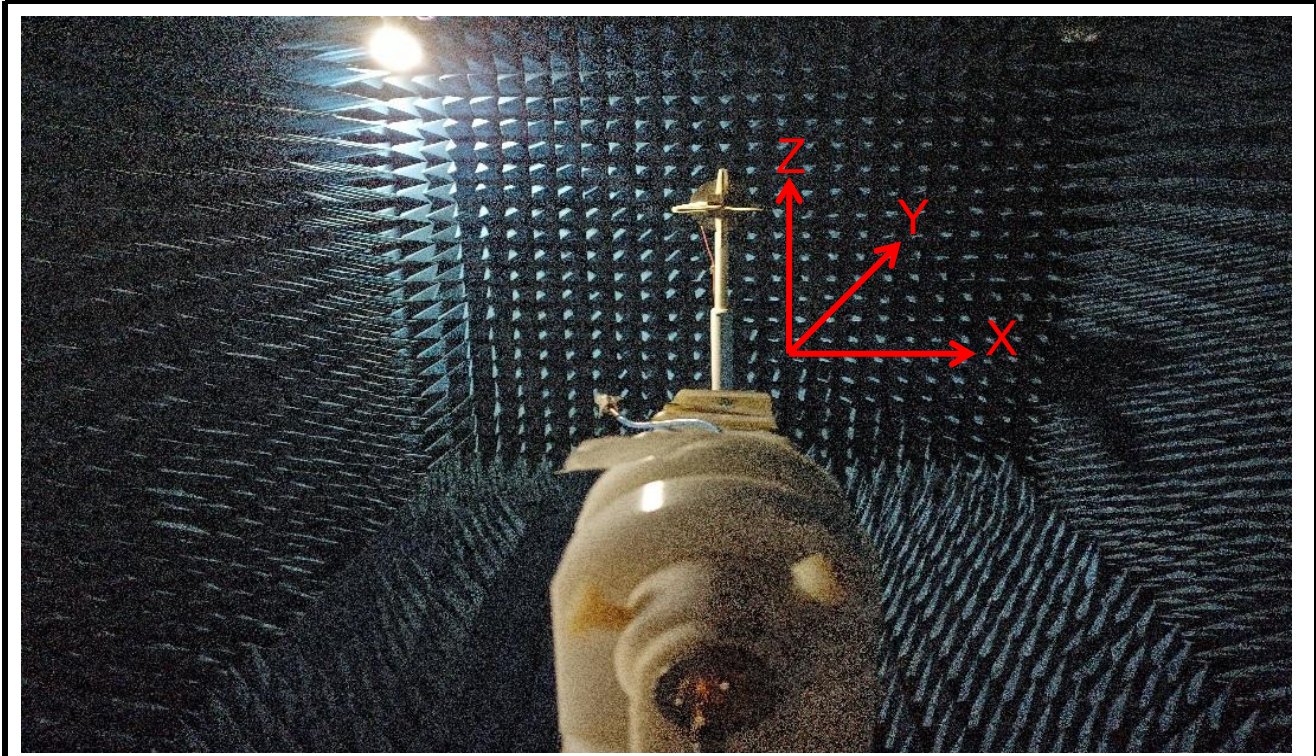
**Agilent
E5071B**



**S
Parameter
Test //
WiFi
Antenna**



3. Antenna Passive Test

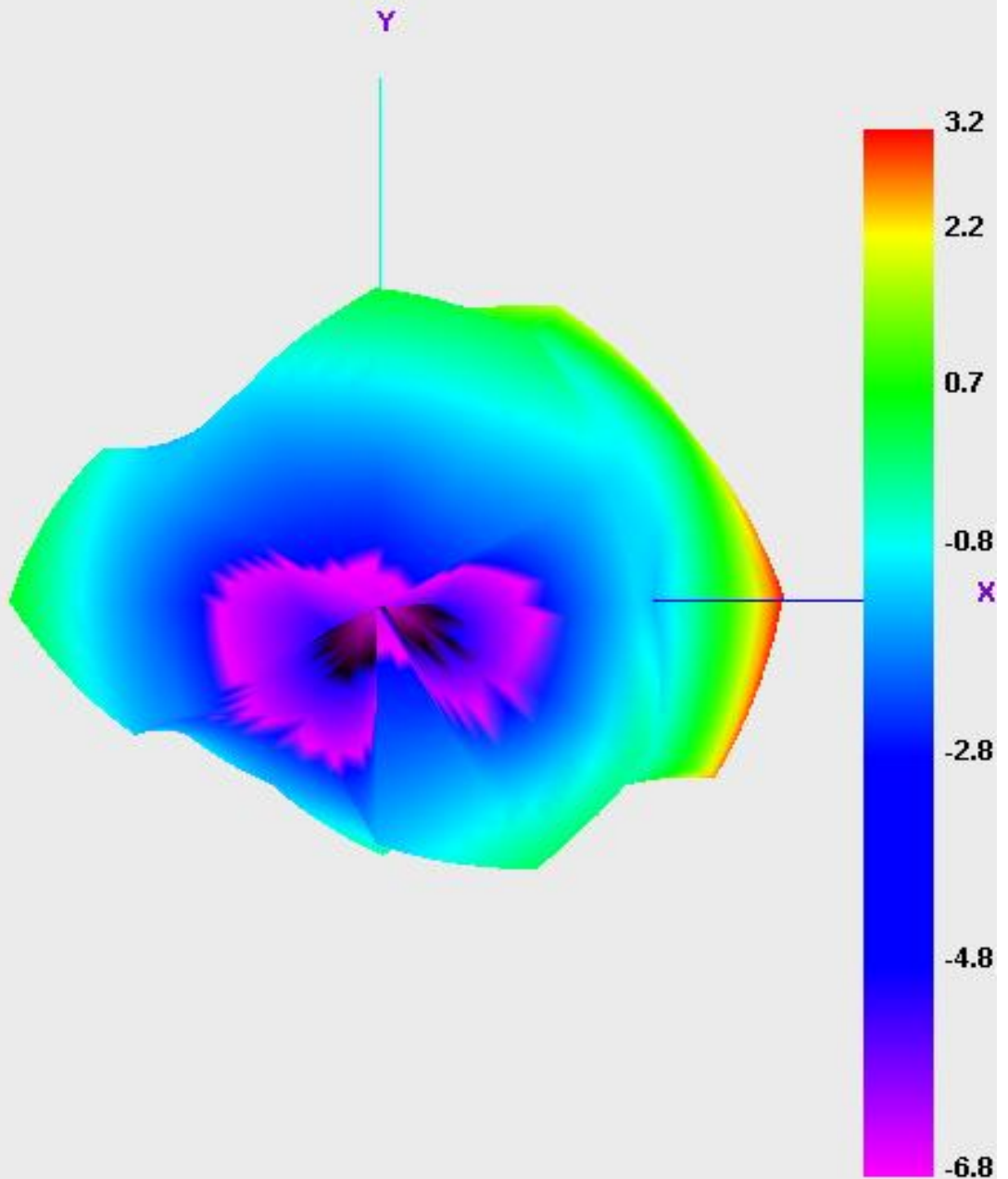


Passive Test For WiFi Antenna

Freq (MHz)	Effi (%)	Effi (dB)	Gain (dBi)
2400	52.0	-2.8	3.2
2410	50.7	-3.0	3.1
2420	49.0	-3.1	3.0
2430	46.6	-3.3	2.9
2440	44.7	-3.5	2.7
2450	46.8	-3.3	2.8
2460	47.2	-3.3	2.8
2470	49.3	-3.1	3.0
2480	48.9	-3.1	2.8
2490	49.8	-3.0	2.7
2500	53.0	-2.8	2.9

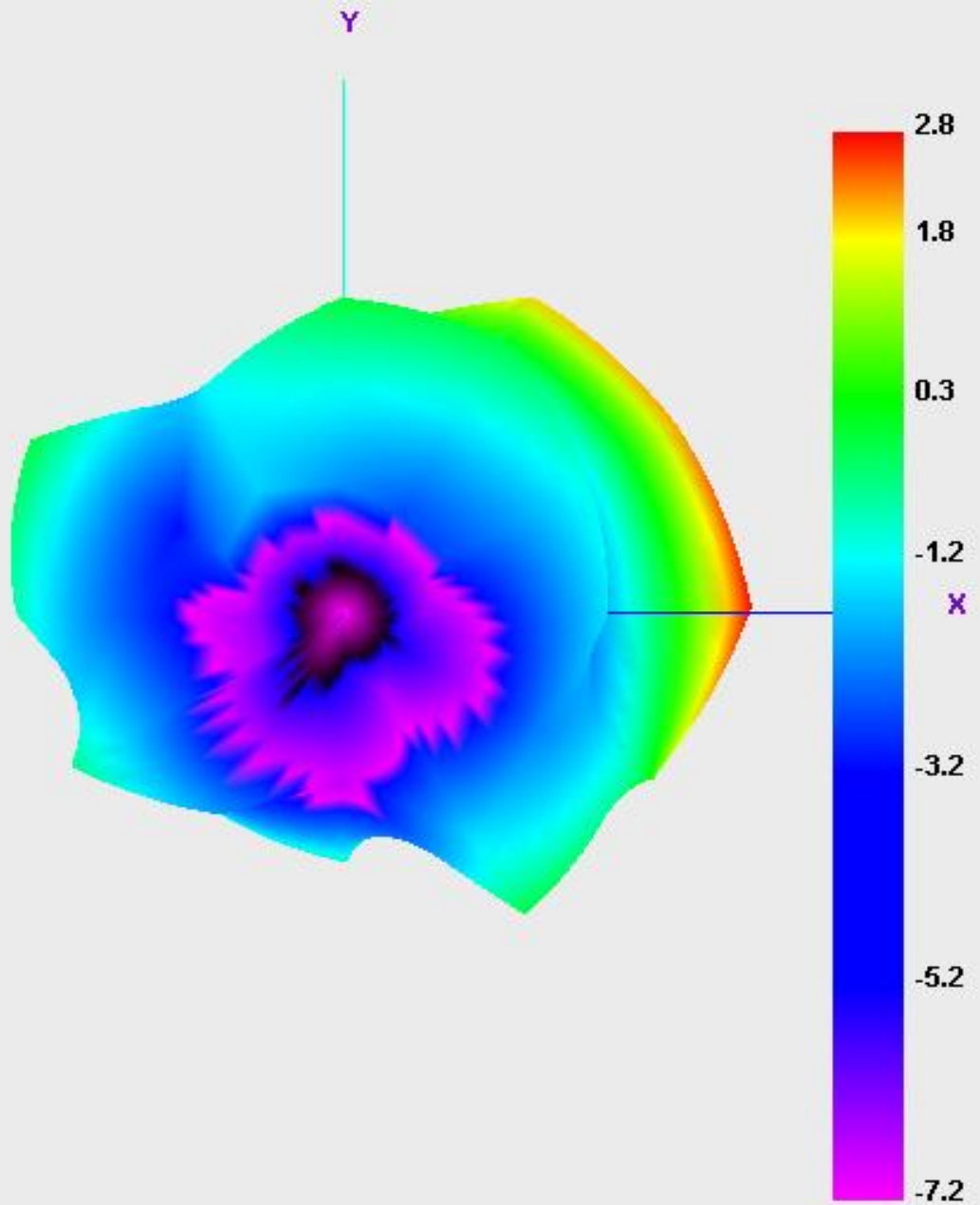
Radiation Pattern For WiFi Antenna

2400.000MHz



Radiation Pattern For WiFi Antenna

2450.000MHz



Radiation Pattern For WiFi Antenna

2500.000MHz

