

Antenna Specification

Contents:

1. Antenna type : FPC ANT
2. Antenna Model: F155UFL
3. Antenna gain : WIFI 2.4G ANT: 3.2dBi(Max)
WIFI 5G ANT: 4.9dBi(Max)

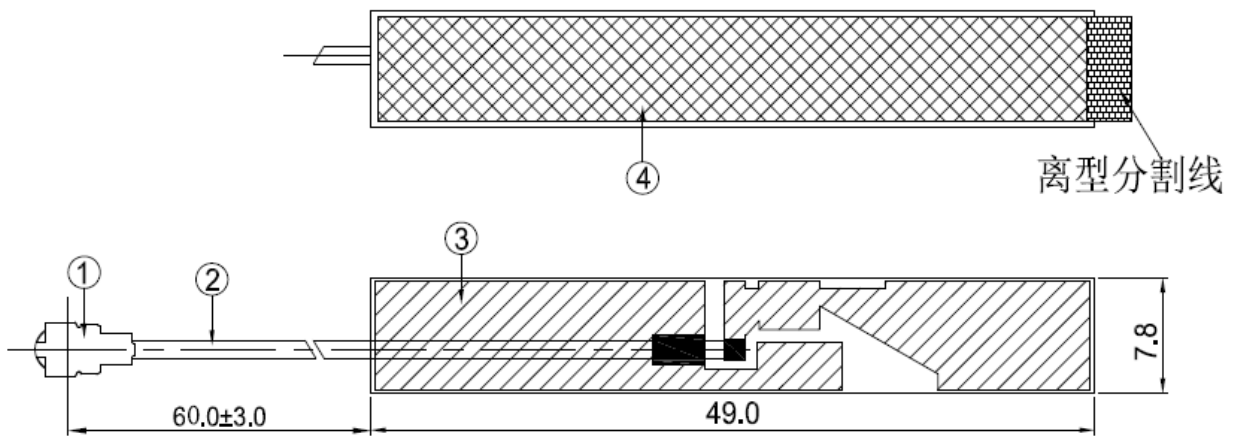
Tester : Tang Guohao

Approval : Chen Guoqiang

Date : 2022 / 10 / 10

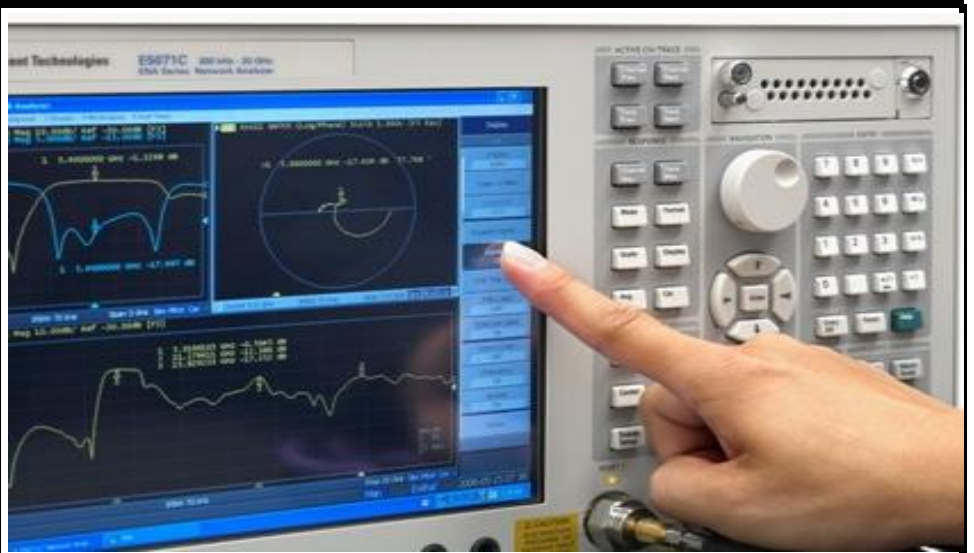
1. Antenna Profile

WiFi Antenna

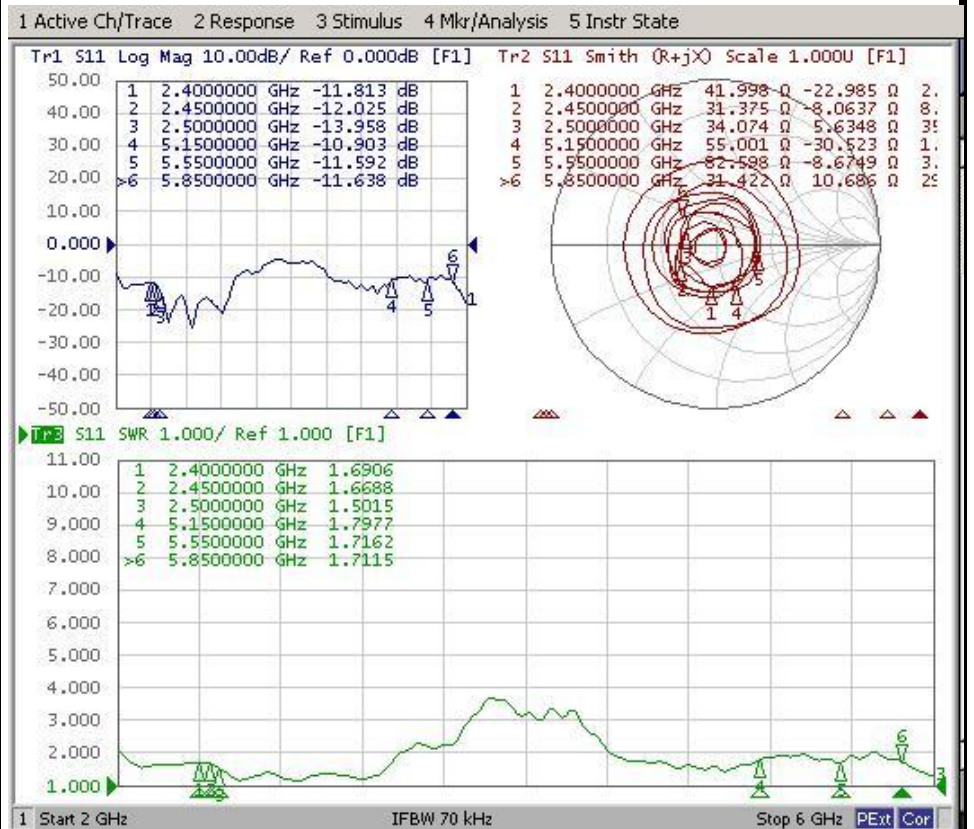


2. Antenna Performance Test

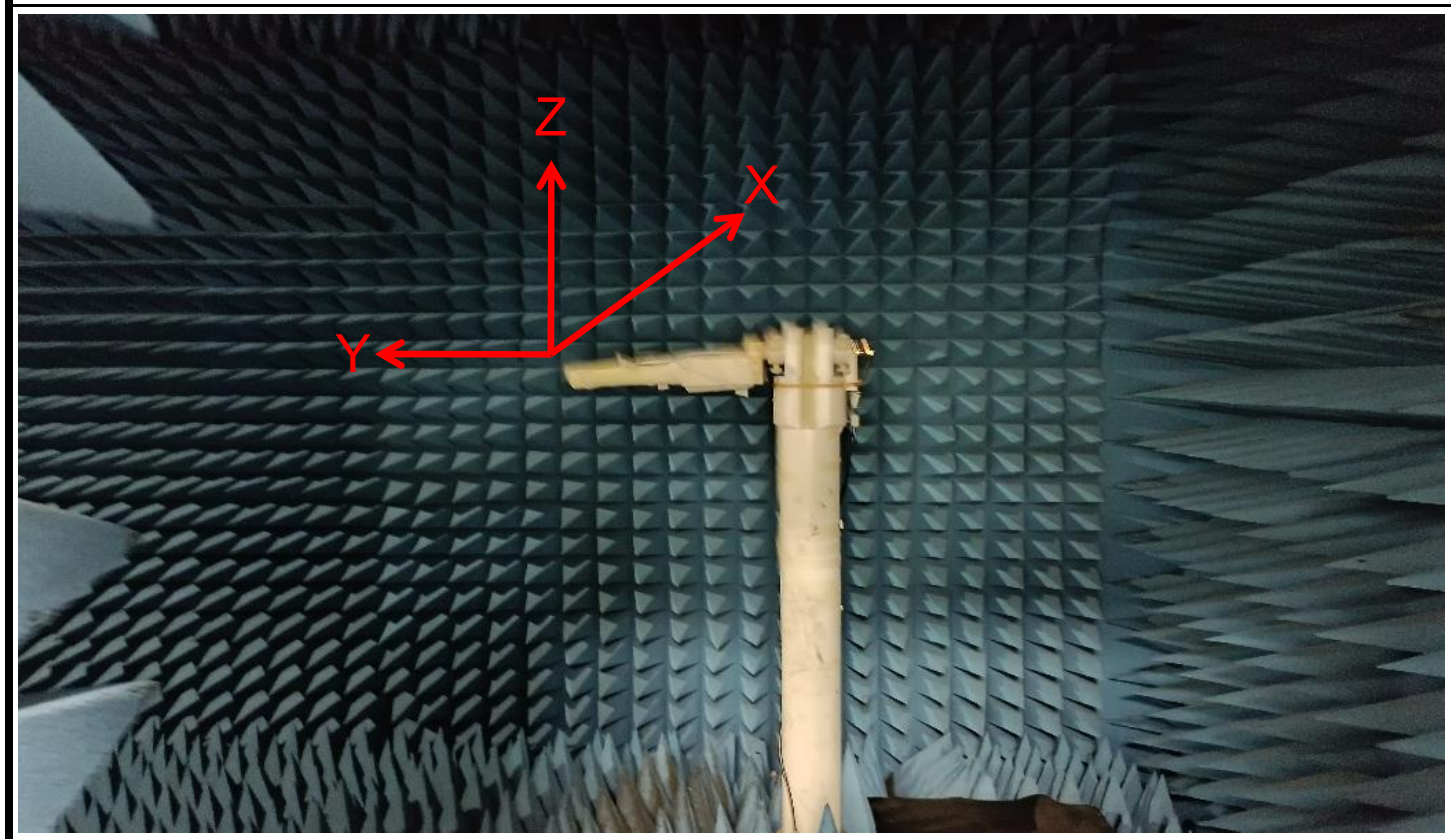
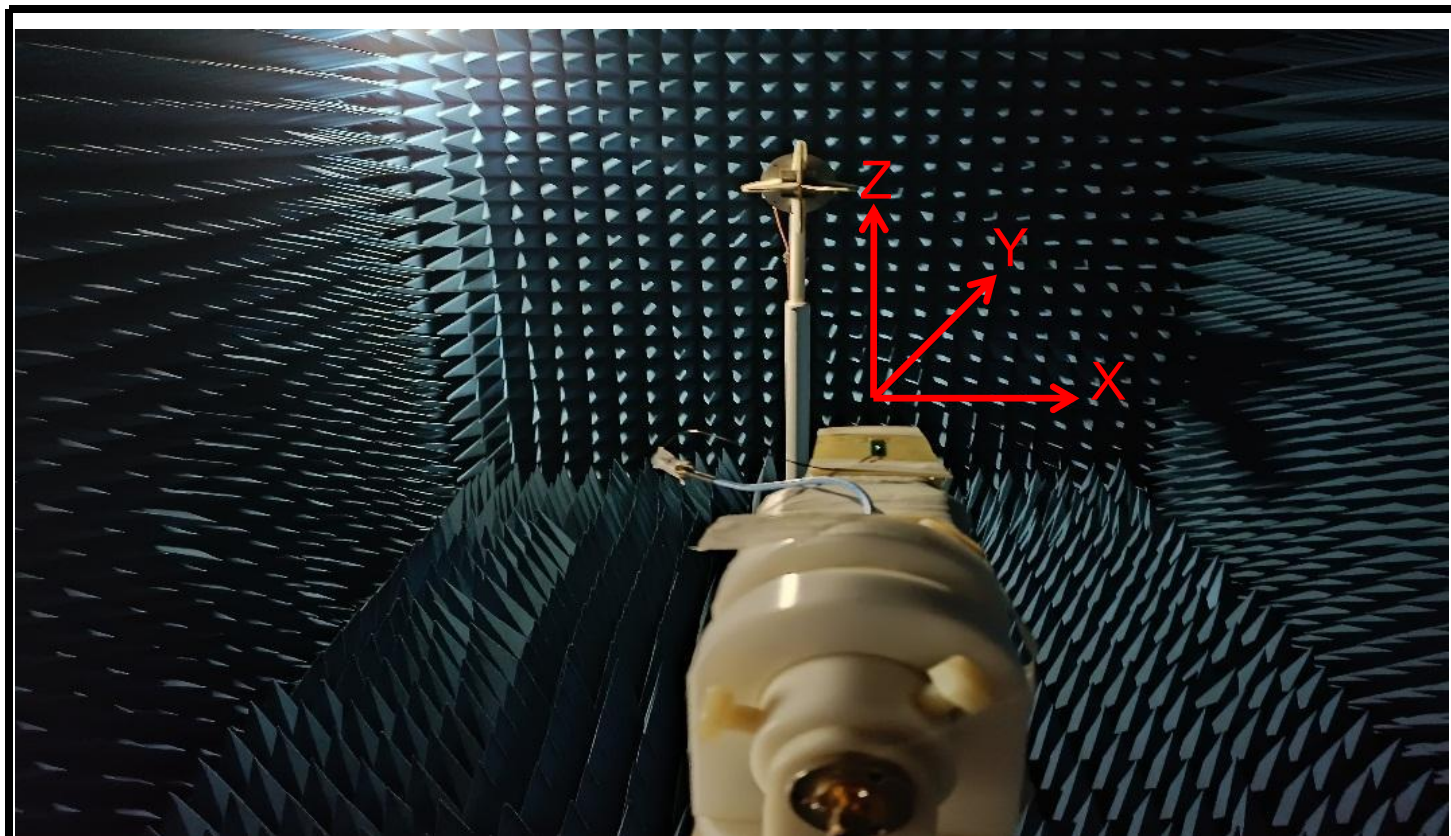
*Agilent
E5071B*



*S
Parameter
Test //
WiFi
Antenna*



3. Antenna Passive Test



Passive Test For WiFi2.4G

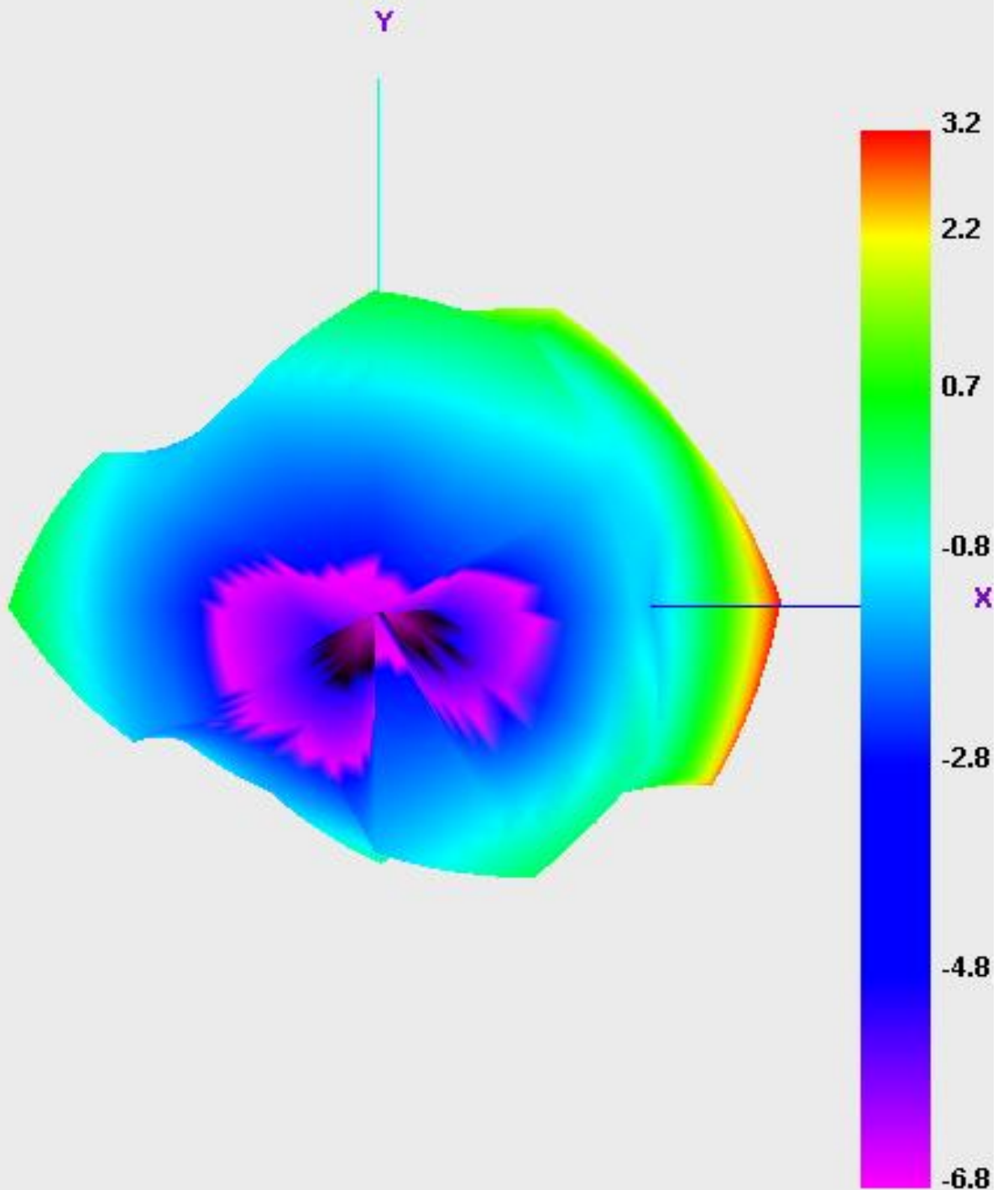
Freq (MHz)	Effi (%)	Effi (dB)	Gain (dBi)
2400	52.0	-2.8	3.2
2410	50.7	-3.0	3.1
2420	49.0	-3.1	3.0
2430	46.6	-3.3	2.9
2440	44.7	-3.5	2.7
2450	46.8	-3.3	2.8
2460	47.2	-3.3	2.8
2470	49.3	-3.1	3.0
2480	48.9	-3.1	2.8
2490	49.8	-3.0	2.7
2500	53.0	-2.8	2.9

Passive Test For WiFi5.8G

Freq (MHz)	Effi (%)	Effi (dB)	Gain (dBi)
5150	27.6	-5.6	-0.6
5200	39.4	-4.0	0.9
5250	43.5	-3.6	1.7
5300	49.3	-3.1	2.2
5350	53.7	-2.7	2.5
5400	51.8	-2.9	2.3
5450	46.9	-3.3	2.4
5500	45.5	-3.4	2.7
5550	43.0	-3.7	2.7
5600	46.5	-3.3	3.0
5650	68.0	-1.7	4.4
5700	67.8	-1.7	4.7
5750	65.2	-1.9	4.9
5800	55.8	-2.5	4.7
5850	52.7	-2.8	4.7

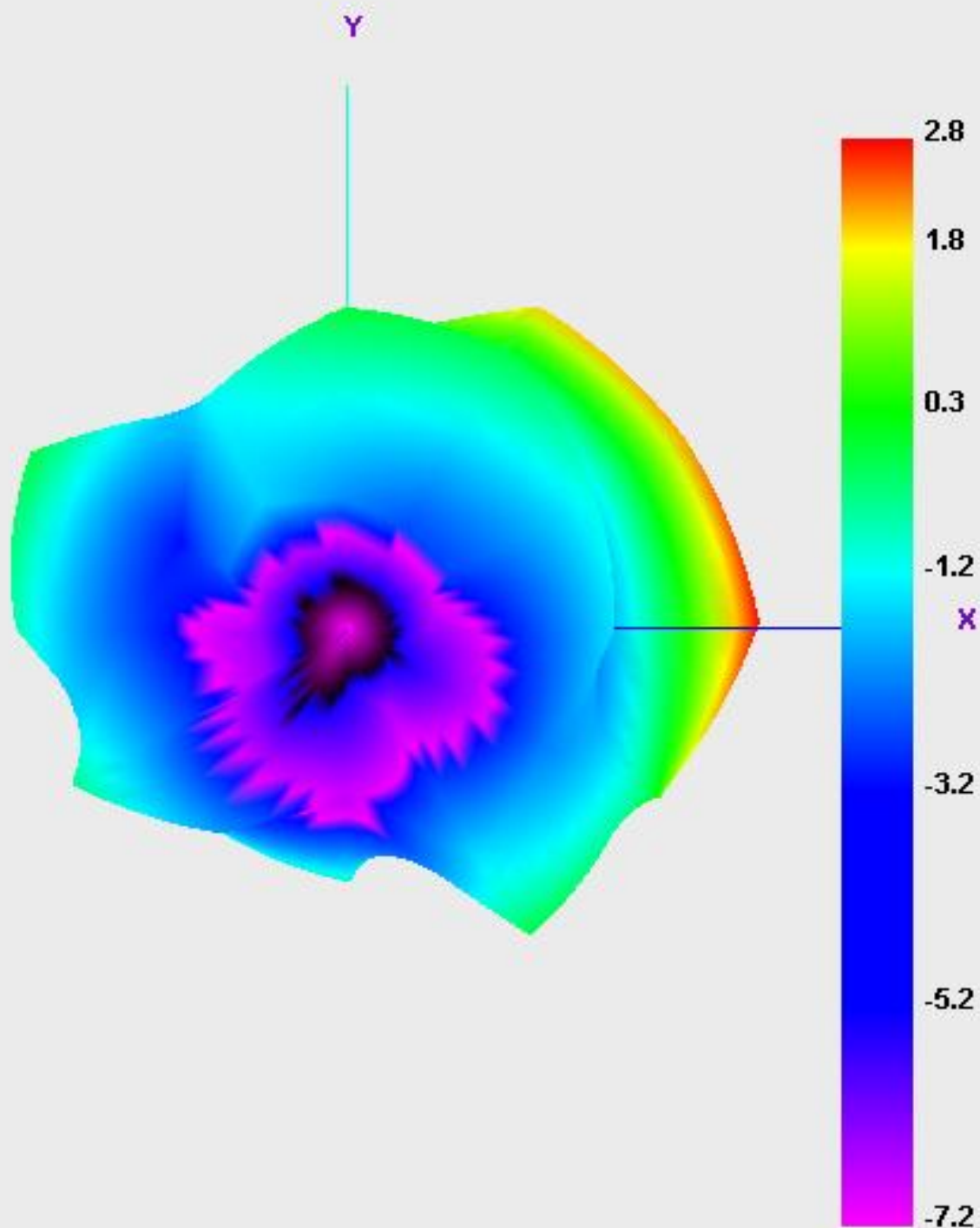
Radiation Pattern For WiFi2.4G

2400.000MHz



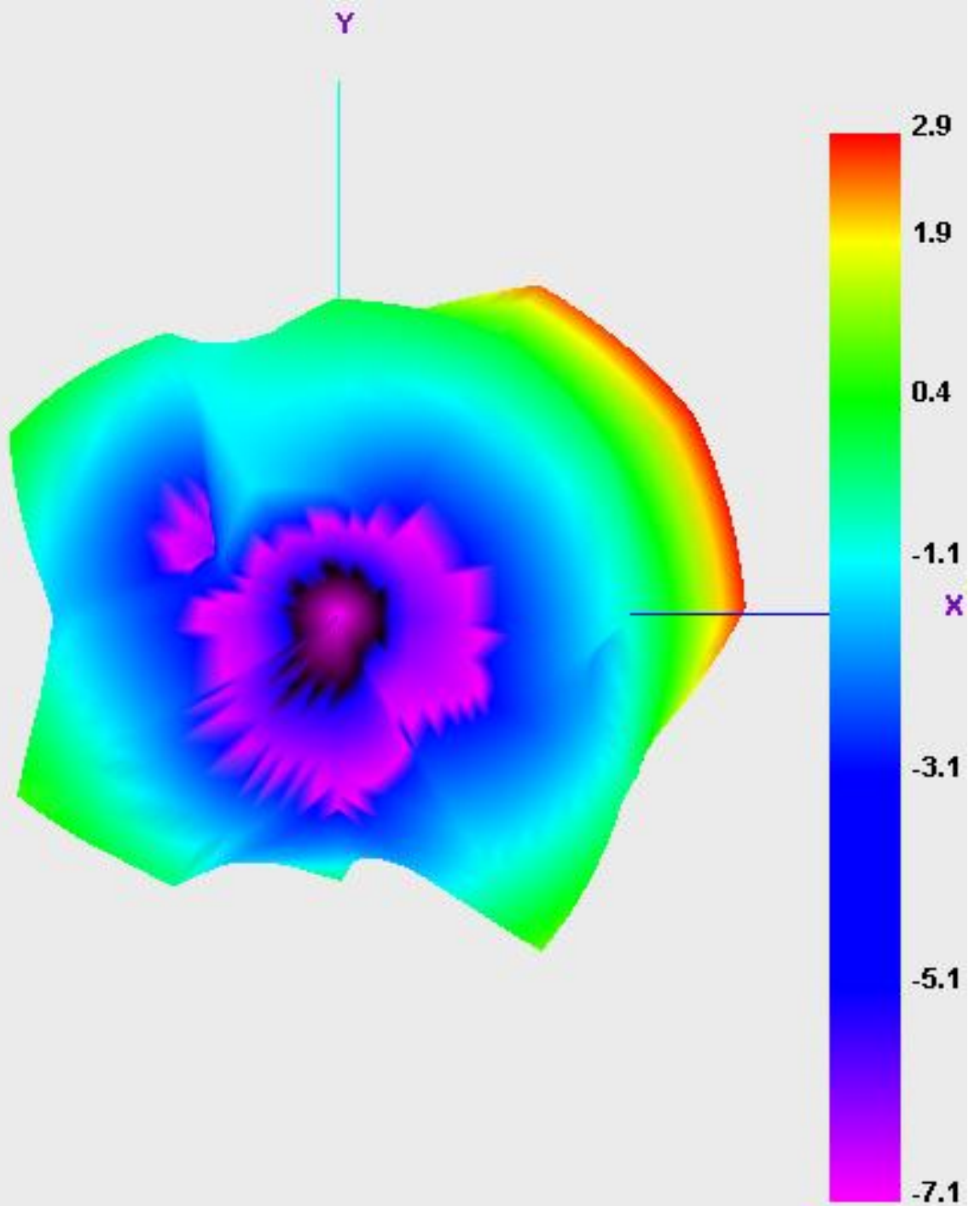
Radiation Pattern For WiFi2.4G

2450.000MHz



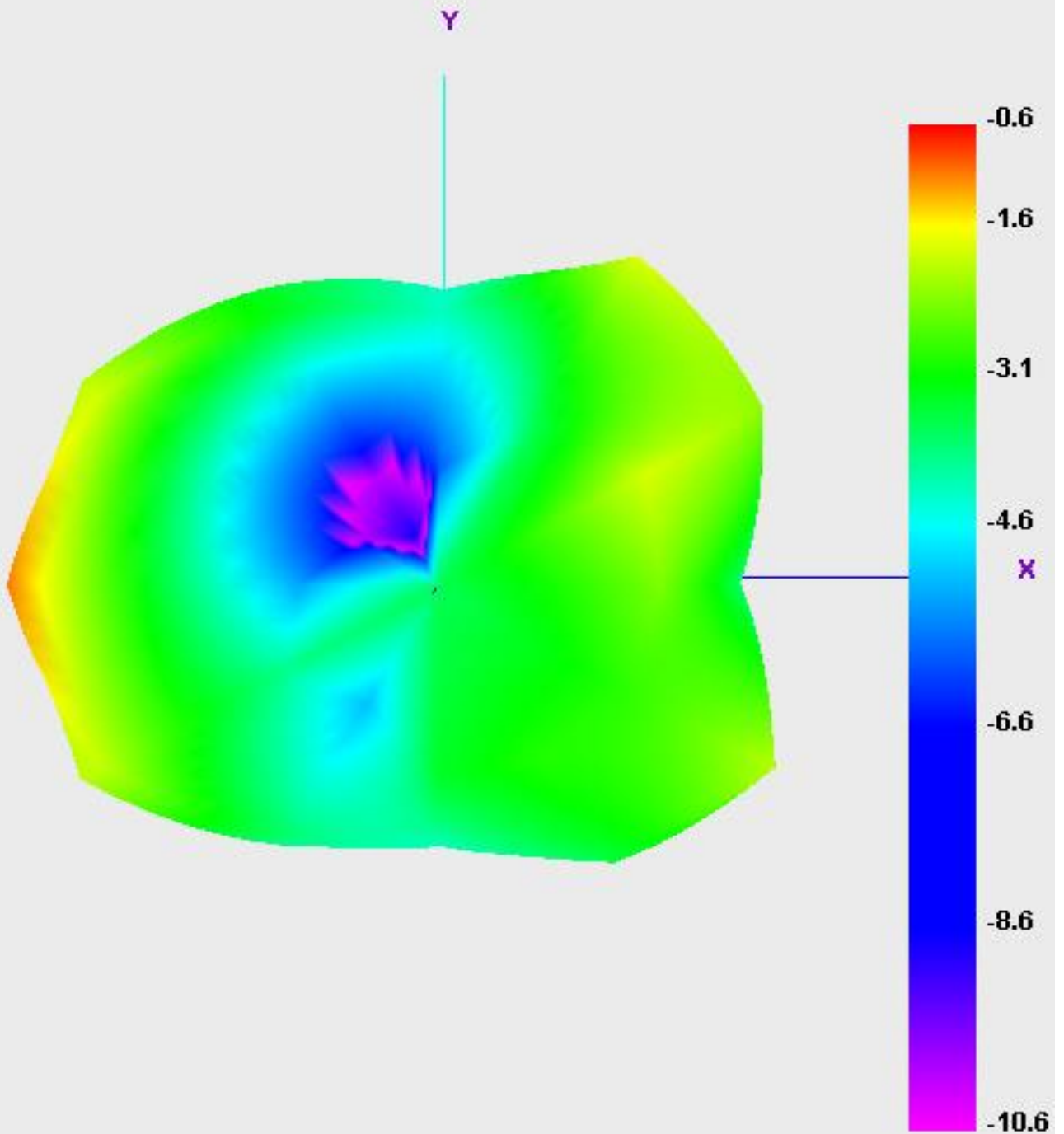
Radiation Pattern For WiFi2.4G

2500.000MHz



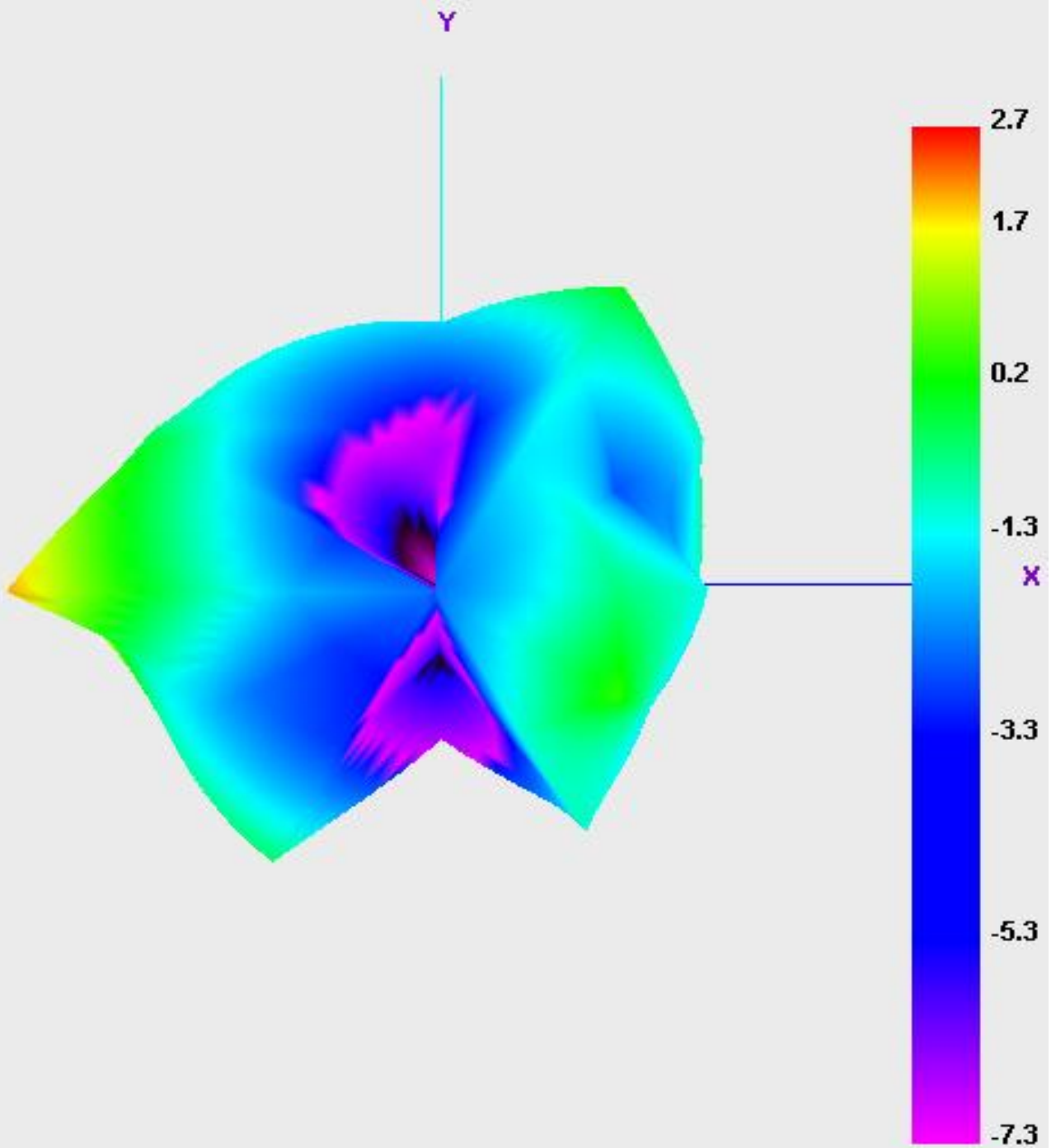
Radiation Pattern For WiFi5.8G

5150.000MHz



Radiation Pattern For WiFi5.8G

5550.000MHz



Radiation Pattern For WiFi5.8G

5850.000MHz

