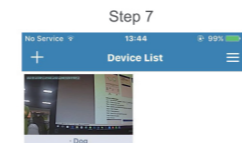
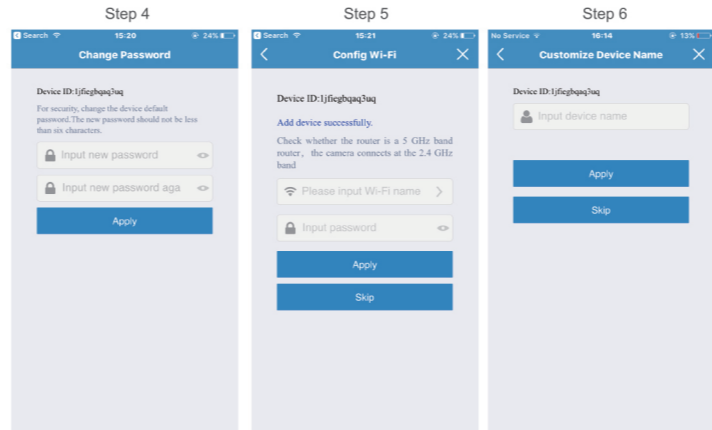
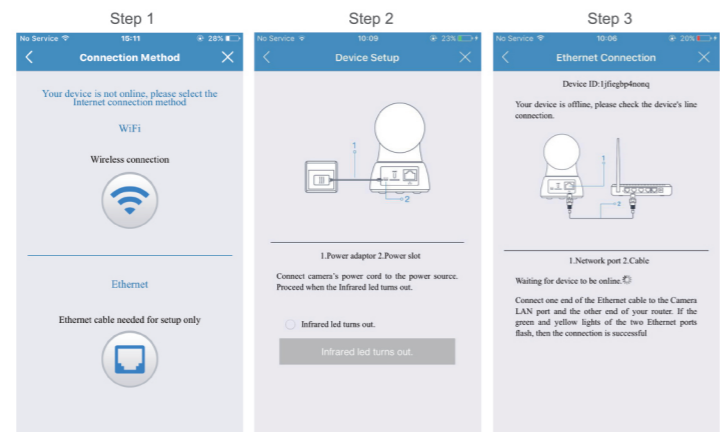


Ethernet configuration(The most stable way to connect to network)

- Step 1: Select Ethernet
- Step 2: Connect the camera's power cord to the power source, proceed to the next step when the infrared led turns out.
- Step 3: Connect the camera to the router through ethernet cable
- Step 4: Change password, you had better set a strong password to keep you camera safe
- Step 5: Select Wi-Fi and input the password
- Step 6: Modify the name(Like Front Door)
- Step 7: Preview



If you want to view the device via web browser, please visit www.myannke.com

Warning/Caution

- Read this guide carefully and keep it for future reference
- Follow all instructions for safe use of the product and handle with care
- Use the camera within given temperature, humidity and voltage levels noted in Camera Specifications
- Do not disassemble the camera
- Do not point the camera directly towards the sun or a source of intense light
- Periodic cleaning may be required. Use a damp cloth only. Do not use harsh cleaners or aerosol cleaners.

Support

Visit our official website to get more support.

- 1 Go to www.annke.com
- 2 Search the model of your product
- 3 Click on the product in the search list
- 4 Download what you need.

