

## HD Smart Wireless Security Camera Quick Start Guide



www.annke.com

### Regulatory Information

#### FCC Information

Please take attention that changes or modification not expressly approved by the party responsible for compliance could void the user's authority to operate the equipment.

#### RF exposure

This equipment complies with RF radiation exposure limits. This equipment should be installed and operated with minimum distances 20cm between the radiators include antenna & your body.


FCC compliance: This equipment has been tested and found to comply with the limits for a Class B digital device, pursuant to part 15 of the FCC Rules. These limits are designed to provide reasonable protection against harmful interference in a residential installation. This equipment generates, uses and can radiate radio frequency energy and, if not installed and used in accordance with the instructions, may cause harmful interference to radio communications. However, there is no guarantee that interference will not occur in a particular installation. If this equipment does cause harmful interference to radio or television reception, which can be determined by turning the equipment off and on, the user is encouraged to try to correct the interference by one or more of the following measures: --Reorient or relocate the receiving antenna. --Increase the separation between the equipment and receiver. --Connect the equipment into an outlet on a circuit different from that to which the receiver is connected. --Consult the dealer or an experienced radio/TV technician for help.

#### FCC Conditions


This device complies with part 15 of the FCC Rules. Operation is subject to the following two conditions:

1. This device may not cause harmful interference.
2. This device must accept any interference received, including interference that may cause undesired operation.

#### EU Conformity Statement

 This product and -if applicable -the supplied accessories too are marked with "CE" and comply therefore with the applicable harmonized European standards listed under the EMC Directive 2014/30/EU, the LVD Directive 2014/35/EU, the RoHS Directive 2011/65/EU.

 012/19/EU(WEEE directive): Products marked with this symbol cannot be disposed of as unsorted municipal waste in the European Union. For proper recycling, return this product to your local supplier upon the purchase of equivalent new equipment, or dispose of it at designated collection points. For more information see: [www.recyclethis.info](http://www.recyclethis.info)

 2006/66/EC (battery directive): This product contains a battery that cannot be disposed of as unsorted municipal waste in the European Union. See the product documentation for specific battery information. The battery is marked with this symbol, which may include lettering to indicate cadmium (Cd), lead (Pb), or mercury (Hg). For proper recycling, return the battery to your supplier or to a designated collection point. For more information see: [www.recyclethis.info](http://www.recyclethis.info)

#### Industry Canada ICES-003 Compliance

This device meets the CAN ICES-3 (A)/NMB-3(A) standards requirements.



### Safety Instruction

These instructions are intended to ensure that user can use the product correctly to avoid danger or property loss.

The precaution measure is divided into "Warnings" and "Cautions"

Warnings: Serious injury or death may occur if any of the warnings are neglected.

Cautions: Injury or equipment damage may occur if any of the cautions are neglected.

	
<b>Warnings</b> Follow these safeguards to prevent serious injury or death.	<b>Cautions</b> Follow these precautions to prevent potential injury or material damage.

#### Warnings

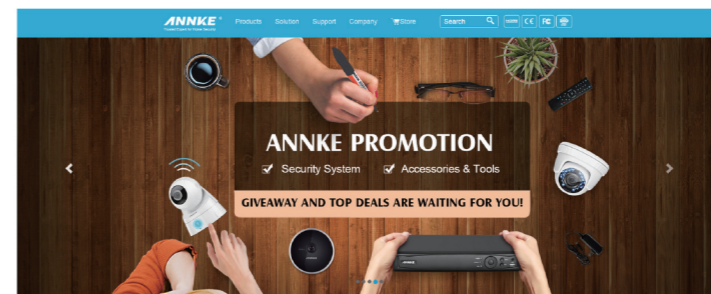
- ◆ Proper configuration of all passwords and other security settings is the responsibility of the installer and/or end-user.
- ◆ In the use of the product, you must be in strict compliance with the electrical safety regulations of the nation and region. Please refer to technical specifications for detailed information.
- ◆ Input voltage should meet both the SELV (Safety Extra Low Voltage) and the Limited Power Source with 100 to 240 VAC or 5 VDC according to the IEC60950-1 standard. Please refer to technical specifications for detailed information.
- ◆ Do not connect several devices to one power adapter as adapter overload may cause over-heating or a fire hazard.
- ◆ Please make sure that the plug is firmly connected to the power socket.
- ◆ If smoke, odor or noise rise from the device, turn off the power at once and unplug the power cable, and then please contact the service center.

### Package Contents

- HD Wireless IPC x1
- DC 5V Power Adapter x1
- Quick Start Guide x1
- Mounting Bracket x1 Mounting Screws x1
- Ethernet Cable\*1 USB Cable x1


### Software and Download

#### To install the camera:



ANNKE Surveillance Solutions

Software and complete instruction manual all available on [www.annke.com](http://www.annke.com).

 **Note:** Information in this document is subject to change without notice. As our product are subject to continuous improvement, our company reserve the right to modify product design, specifications and prices without notice.

#### To install the camera:

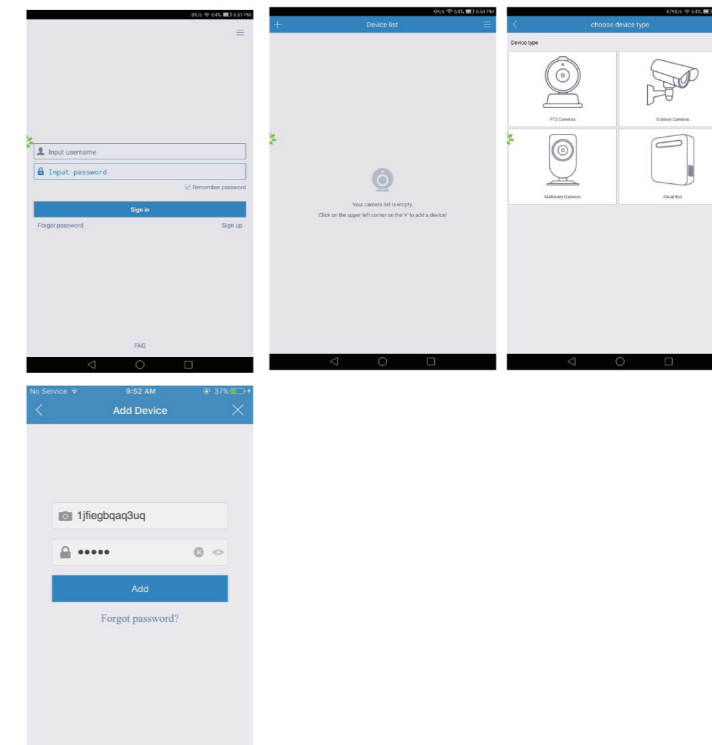
- 1 Use the included mounting template to mark holes for the screws.
- 2 Use a Philips head screwdriver(not included) to loosen the adjustment screw.
- 3 Adjust the camera position as needed, and then tighten the adjustment screw to the secure the position.

### APP Installation

Download 'Myannke' APP from APP Store or Google Play.

### Add Camera to APP(5G is not supported)

- 1 Assemble the camera and connect to power, start the app, then register an account and login
- 2 Click on "+" icon at the top of left corner. Then select the camera type:PTZ camera
- 3 Scan the QR code on the bottom of the camera or enter the Device ID manually, and input the password(default: admin)



#### Wireless Connection(The most common way to connect to the network)

- Step 1: Select Wireless connection
- Step 2: Connect the camera's power cord to the power source, proceed to the next step when the infrared led turns out.
- Step 3: Press the reset button one time to start network connection, tab next when you hear the hint voice.
- Step 4: Input the password(Ensure you smart phone has connected to Wifi)
- Step 5: Wifi Connection, it will take about 1 minutes to connect to the router and the server
- Step 6: Change password, you had better set a strong password to keep you camera safe
- Step 7: Preview