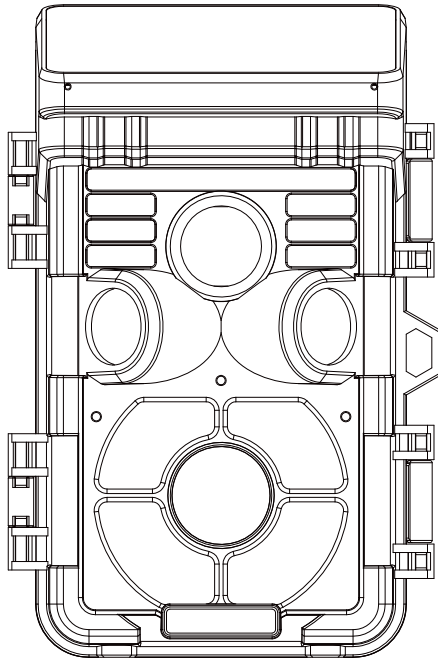


# **SOLAR INTEGRATED HUNTING CAMERA**

**Model: DL30J2CW**



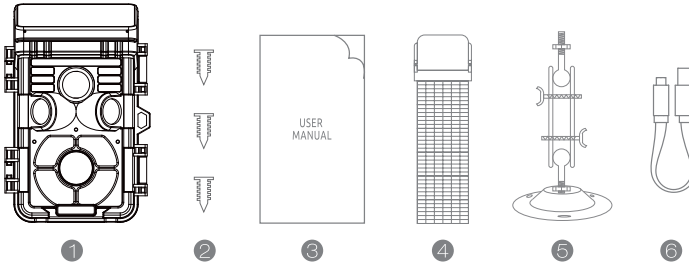
**Instruction Manual**

# CONTENTS

01. PACKING LIST -----	01
02. INTRODUCTION-----	01
2.1 Parameter of Wildlife Camera-----	01
2.2 Features of Wildlife Camera -----	02
03. STRUCTURE -----	02
04. PREPARATION BEFORE USING -----	02
05. USING THE CAMERA AND SETUP MENU -----	04
5.1 Using the Camera -----	04
5.2 Setup Menu -----	06
06. THER NOTICE-----	08
6.1 Aligning the Camera-----	08
6.2 ON Mode-----	09
6.3 Night Recording -----	10
6.4 File Format -----	10
07. CONNECTING TO COMPUTER -----	10
08. APP CONNECTION -----	11
09. TECHNICAL SPECIFICATION -----	13
10. SIMPLE TROUBLE SHOOTING -----	14
11. SYSTEM INFORMATION, MAINTENANCE AND DISPOSAL TRADEMARK INFORMATION -----	15
12. HAZARD,SAFETY AND WARNING NOTICES -----	16

## 1.PACKINGLIST

Please carefully unpack camera and check that below accessories are contained in the box.



1.Wildlife Camera \* 1  
4.Mounting Belt \* 1

2.Screws \* 3  
5.Wall Mount \*1

3.User Manual \* 1  
6.USB cable \*1

## 2.INTRODUCTION

The Wildlife Camera is a wildlife and surveillance camera with an infrared sensor. The sensor can detect sudden changes to the ambience temperature within an evaluation area. The signals of the highly sensitive infrared sensor (PIR, Passive infrared sensor) switch on the camera, activating photo or video mode.

### 2.1Parameter of Wildlife Camera

- 1.CMOS sensor.
- 2.1080P video.
- 3.2.0" color TFT LCD:320 X 240 Pixels.
- 4.20pcs IR LEDs.
- 5.Full automatic IR filter.
- 6.Trigger speed: Approx. 0.4 second.
- 7.Setup Serial No. to record the position.
- 8.Time, date, temperature, phase and Serial No. will be stamped on the photo
- 9.Password protection.
- 10.Power indicating.
- 11.Built-in test function about environmental temperature.
- 12.Built-in microphone and speaker.
- 13.Type-C USB 2.0 interface.
- 14.Waterproof standard IP65.
- 15.Working temperature: -20°C to 60°C(-4°F to 140°F).

16. Extremely low power consumption in standby operation provides quite long operating time.

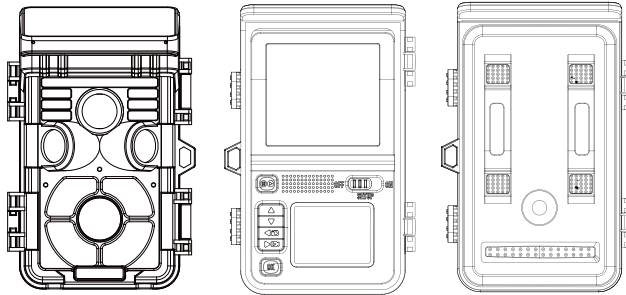
17. The camera is equipped with a 5000mAh lithium battery and can be powered by the solar panel on the top of the camera.

## 2.2 Features of Wildlife Camera

1. Camera trap for hunting
2. Animal or incident observation.
3. Motion triggered security camera for domestic, office or public use.
4. Any internal and external surveillance.

## 3. STRUCTURE

Understanding the camera structure helps to use this product more skillfully.



3.1 The monitor is only switched on in the SETUP mode for changing menu settings or viewing existing photos and videos.

3.2 A SD memory card must have been inserted into the memory card slot to save photos and videos

3.3 Using the Type-C USB connection (USB 2.0), the camera can be connected to a computer to download photos and videos.

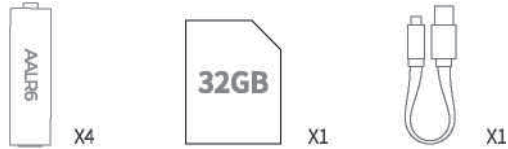
3.4 Using the mode switch, the three operating modes: OFF, SETUP and ON can be selected.

## 4. PREPARATION BEFORE USING



Note:

1. SD memory cards up to a capacity of 32 GB are supported.



2. Under low temperature and low sun light, please use 4 AA batteries as auxiliary power supply.

3. If the built-in lithium battery of the camera is out of power, please use a 5V1A USB adapter to charge. When using Type-C USB to charge the camera, a red indicator light at the Type-C USB interface will light up, and the camera will be fully charged after 8 hours. The red indicator light will disappear.

4. Insert CLASS 10 or higher class SD card.

5. Please insert or remove the SD card when the camera is in "OFF" mode. Insert or remove the memory card in setup mode, the camera will shut itself down.

6. New memory card is recommended to be formatted when using (as below described).

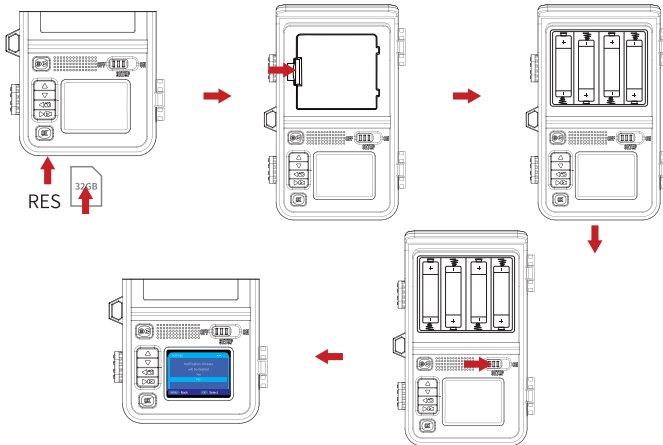
7. Please note that the camera will power off when power is very low.

**How to start:**

Press to the right and lift up to take out the battery cover, charge the trail camera for more than 8 hours or put 4 AA batteries in the order of the battery compartment.

Insert the SD card and switch to SETUP

Then reposition the battery cover.



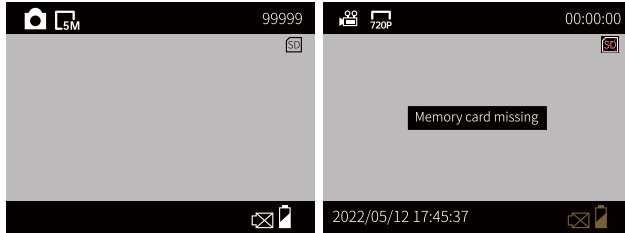



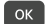


	Photo or video mode icon
	SD card status icon
5M/720P	Photo or video resolution
99999/00:58:30	Can store the number of photos or the length of video recording (related to memory card capacity/pixel/resolution)
	Lithium battery icon (the power is supplied by the lithium battery by default when the power is turned on. When the lithium battery power is lower than 10%, the trail camera will be powered by AA alkaline battery).
	There is no AA alkaline battery icon (it is recommended to install 4 spare AA alkaline batteries).
2021/02/23 15:35:26	Date and time display.

## 5. USING THE CAMERA AND SETUP MENU

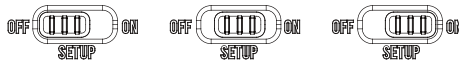
### 5.1 Using the Camera

Operation Buttons	
Button	Function
	Switch the camera mode between OFF/ SETUP /ON.
	1.In photo/video mode, press once to playback, press twice to menu. 2.In playback mode, press once to back to menu.
	1.In Setup mode, page down. 2.In playback mode, move file. 3.In setup mode, adjust time.

	<ol style="list-style-type: none"> <li>1.In setup mode. Page up;</li> <li>2.In playback mode,move file.</li> <li>3.In setup mode,adjust time.</li> </ol>
	<ol style="list-style-type: none"> <li>1.In photo/video mode, switch to recording mode.</li> <li>2.In setup mode. adjust time.</li> </ol>
	<ol style="list-style-type: none"> <li>1.In photo/video mode. switch to photo mode.</li> <li>2.In setup mode. adjust time.</li> </ol>
	<ol style="list-style-type: none"> <li>1.In photo/video mode,short press to take photos and videos.</li> <li>2.In setup mode. short press confirm option.</li> <li>3.In playback mode,video play and pause.</li> </ol>

### Power Switch

Shift the switch to choose work mode:



The Power Switch is used to control the camera working status.

#### OFF:

The camera is completely off, only in this mode, you can remove the memory card and replace the batteries

#### Setup:

Under this mode, the camera screen is on, you can manually record video or take photos, you can also review the recorded files or change the setup options according to your own reference. When the camera is in Setup mode, the PIR sensors are on, when they are triggered, the PIR Indicators LED will flash. But in this mode, the camera will not take photos or record video when the PIR sensors are triggered.

#### ON:

When the camera is switched from SETUP mode to ON mode, it will enter standby with low power consumption, screen display will turn off and button operation will be disabled. The camera will respond to the PIR sensors only. It will turn on and take photos or record videos when the PIR sensor is triggered, then return to standby afterwards.

#### Notice

Prior to setting up the camera for surveillance, it must be set up for the respective purpose. For this purpose, there is a setup mode available. In addition to change settings, photos and videos can be taken and existing photos can be viewed in this mode.

## 5.2 Setup Menu

### 1.Mode

Photo, Video, Photo+Video, select whether photos or videos should be taken when motion is detected. When in the "Photo+Video" mode, the camera first takes a set number of photos prior to recording a video.

### 2.Photo Pixels

Select the desired resolution for photos. A higher resolution produces a somewhat better photo quality but results in larger files requiring more space on the memory card.

### 3.Photo series : 1 P, 2P, 3P

### 4.Video resolution

Select the required video resolution. A higher resolution produces higher quality videos but results in larger files requiring more space on the memory card. Videos are recorded in AVI format which can be played back on most video devices.

### Taking 16GB memory card for example:

Video Resolution	Video Length:10 seconds		Total recording time (Minute)
	Video size (MB)	Video quantity	
1920x1080	46.2	350	58
1280x720	34.4	470	78
720 x480	17.8	920	153
640x480	13.4	1200	203

### 5.Video Length

▲ Default 5 seconds, optional 3s-59s, 1-3Minutes

Specify the duration of a video recording when the camera is triggered automatically. The recording period for videos is not limited in the SETUP mode.

1.In the SETUP mode in daytime and at night.

>When recording manually, the camera will stop when the memory card is full or ultra low power.

2.In live mode (ON) at night, the camera will work automatically as per the video length setting. For low power, it will stop recording in advance.

3.Please set the shorter video length to guarantee a long-time usage of batteries.



## **6.Audio recording**

Turn on/off audio recording

## **7.Shot lag**

▲ Defaulted 1 MIN. optional from 5 seconds-60 minutes.

Select the shortest period for the camera to wait before it reacts to the successive triggering of the main sensor after an animal has first been detected. The camera does not record any photos or videos during the selected interval. This prevents the memory card from being fitted with unnecessary shots.

1.The shot lag is short, the camera shooting frequency would be high, and there would be high consumption of the power. It would affect the usage days of the batteries.

2.On the opposite, if the shot lag is long, it would be a lower consumption of power to guarantee a long-time usage.

## **8. Side motion sensor switch Turn on/off the side motion sensor**

## **9.Sensitivity of motion sensors**

1.Select "High" for interior areas and environments with little interference

2.Select "Medium" for exterior areas and environment with a normal amount of interference,

3.select "Low" for an environment with a high level of interference.

## **10.Target recording time**

Press "OK", and then select "ON" to set the starting working and ending working time. After finishing setting, the camera only works during the set time every day. Beyond the period, the camera is in standby.If the start time is, for instance set to 18:35 and the end time to 8:25, the camera will be operational from 6:35 pm of the current day until 8:25 am of the next day. The camera will not be triggered and will not take any photos or videos outside of this period.

## **11.Time lapse**

Press "MENU" to find "Time lapse". Press "OK", then select "ON" to set the time interval, and set the values of Hr, Min and Sec. For example, if the process of flowers blooming has to be recorded, time lapse can be used. The camera automatically takes pictures in every set time intervals.

## **12.Language**

Select the desired menu language.The following languages are available: English, German, French, Spanish, Chinese, etc.

## **13.Time&date**

Press"MENU"to find "Time & Date". Press"OK",then select Set time & date: Set the time and date according to current time.

Press Left/Right button to change the value, press "OK " to confirm changes and move to next number.

Time formats: 12/24hr Date formats: dd/mm/yyyy, yyyy/mm/dd, mm/dd/yyyy;

#### **14.Photo stamp**

Turn on/off display of watermark on photo

#### **15.Password protection**

Password protection setup. Select "Password protection" in the menu. Press "OK", and then select "On" to set the password of the camera. The password is a 4-digit number selected between 0-9. If the password is lost, press MENU button and UP button at the same time, and slide the operating mode selector from OFF to SETUP position. The camera is unlocked.

#### **16.Beep sound**

Turn on/off beep sound

#### **17.Format memory card**

Select to format memory card on this camera, we suggest format the memory card on computer then format it on this camera again for first use.

#### **18.Serial NO.**

Press "OK", and then select "ON" to set the serial number for the camera. You can use a combination of 4 digits. When using several cameras, this makes it easier to identify the location when viewing photos.

#### **19.Reset settings**

Select to reset the camera to the default settings.

Please note to set date and time again.

#### **20. Automatically turn off WiFi**

Set the time for the camera to automatically turn off WIFI, select the "Auto Turn Off WIFI" option, and press the "OK" button to open the menu for 1 minute/2 minutes/3 minutes/. In monitoring or SETUP mode, after connecting to WIFI and using the APP, the camera will exit WIFI automatically after the default time of "Auto Turn Off WIFI" is reached, and automatically returns to ON or SETUP mode.

#### **21.Version**

Select to check the camera's current firmware version number.

#### **5.3Replay mode**

Notice:

In playback mode, long press the menu button to delete and lock the file.

Delete

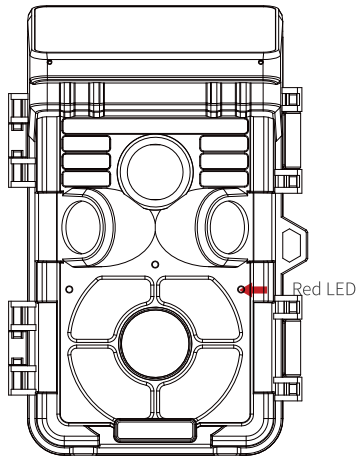
Select the "Delete" option to remove individual or all photos and videos from the memory card thus making storage room for new photos and videos.

## **6. THER NOTICE**

### **6.1 Aligning the Camera**

The Test mode is advantageous for determining the best possible detection angle and range of the movement sensor. For this purpose attach the camera at approx. 1-2 m height to a tree and align the camera with a desired direction. Move slowly from one side of the observed area to the other and move parallel to the camera. Try out different angles and distances.

The red LED indicator on the front of the camera lights up to indicate that you have been detected by the PIR sensor area.



In this way you can determine the best position for aligning the camera. The LED only lights up in the SETUP mode as soon as the sensors have detected movement. The LEDs do not light up when in ON mode. In order to prevent incorrect signals and unnecessary photos, we recommend using the camera at sunny points and check that no branches are in the active area of the sensor. Optimum alignment is in North or South direction. The detection range of the sensors is approx. 120°. Also check that the camera is set to the correct height in line with the point to be observed. Where necessary, point the camera down for optimum alignment.

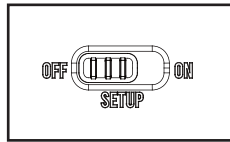


**Notice:** Wildlife Camera corresponds to protection class IP 65. The camera is protected against dust and spray water and can thus be used in any weather condition.

## 6.2 On Mode

The standard application of the Wildlife Camera is the Live mode. When in this mode, photos are either triggered by movement sensors or at intervals according to the respective setting. To set up the Live mode, switch mode switch to ON position. The

red status LED flashes for approx. 5 seconds before the camera operates automatically and enters the Standby mode.



### 6.3 Night Recording

During night recording the infrared LEDs (IR LEDs) at the front of the Wildlife Camera provide the light required for taking photos. Wildlife Camera uses IR LEDs with a long wave length to keep red light to a minimum. The provided number of IR LEDs generates a high deflection angle thus allowing night recording at a distance of 3 m to 20 m, without overexposing the object. Reflecting objects can, however, also cause overexposure within this range (e.g. road signs). Please note that night recording using IR LEDs produces black and white images.

### 6.4 File format

The Wildlife Camera stores photos and videos on the memory card in the folder "DCIM". Photos are given a file name with extension "JPG" (Example: "IM\_00001.JPG"). Videos, are given the extension ".AVI" (Example: "VD\_0001.AVI"). When in SETUP and OFF mode use the enclosed USB cable to transfer files onto the computer. Alternatively you can insert the memory card in a card reader on the computer.

The video file can be played with most standard programs, such as Windows Media Player, PotPlayer etc.

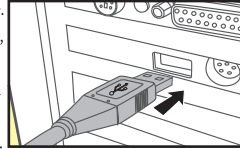
## 7. Connecting to computer

The Wildlife Camera can be connected to a computer using the supplied USB cables to view existing photos/videos.

### System requirements:

Windows	Macintosh
■ Pentium III or higher	■ PowerPC G3/G4/G5
■ Windows XP/Vista/7/8/10	■ OS 10.3.9 or newer system
■ 512 MB RAM	■ 512 MB RAM
■ 1GB available hard disk space	■ 1GB available hard disk space
■ Screen resolution 1.024 x 768 or higher	■ Screen resolution 1.024 x 768 or higher
■ Available USB connection	■ Available USB connection

1. Connect the camera to your computer using the USB cable.
  2. The camera switches on automatically in the USB mode, irrespective of the selection on the mode switch.
  3. The camera installs itself on the computer as an additional drive under the name "Removable storage device".
  4. Double click on the device to detect the folder "DCIM".
  5. The photos and videos are located in the sub folders of the "DCIM" folder.
  6. You can copy or move photo and video files on the computer.
- Alternatively you can insert the memory card in a card reader on the computer.



Note:

- Mac computers show an "Unknown" drive on the desktop. When clicking on this drive, the program "iPhoto" is automatically started.

## 8.APP Connection

### 8.1.APP download & installation

Download method 2: Please scan the QR code below with your Android or IOS mobile phone to download the "Trali Cam Plus" APP.



Android/IOS

Download method 1: Before use, please download and install the "Trali Cam Plus" APP in the Google Play or Apple store.

### 8.2. Bluetooth to turn WiFi and Automatic Connect

8.2-1. Set the camera to the SETUP or ON mode, turn on the APP "Trali Cam Plus" on the phone.

8.2-2. Click (as shown in picture 1) "Add Camera +" , The mobile phone will prompt "Whether allow to turn on the bluetooth" , click "Allow" . It will automatically search for the bluetooth name "Hunting Cam" and the corresponding bluetooth address.

8.2-3. Click to add (as shown in picture 2) "+". The camera will automatically turn on wifi and connect without entering a password.

8.2-4. Connect to device (as shown in picture 3) WiFi is connecting, please wait....

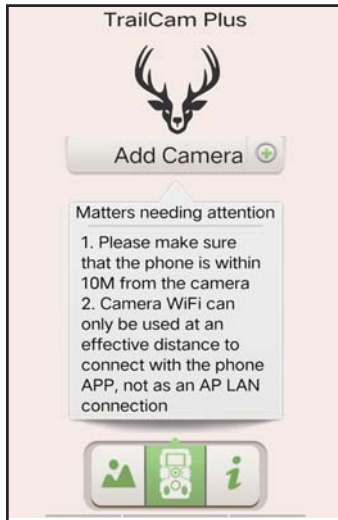
8.2-5. The "TraliCam Plus" app wants to use a temporary Wi-Fi network to connect to your device.

Hunting 338B21F9 (as shown in Picture 4) click to connect ( camera WiFi will automatically exit when this interface does not click to connect within 45S, you need to restart the bluetooth to turn on the WiFi). The camera will prompt that the connection is successful, then you can preview/playback/deletion/setting on the effective distance APP in Real-time, the video cannot be played back online. It can only be played after downloading.

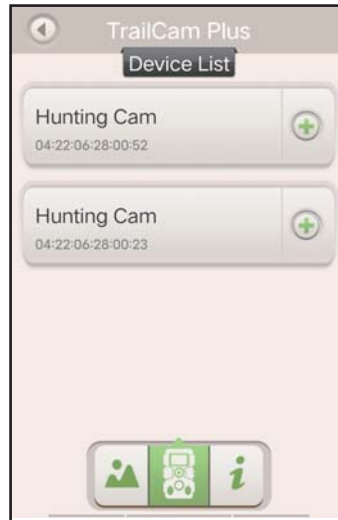


**Notes:**

1. Please make sure the phone is within 10M from the camera.
2. Camera WiFi can only be used at an effective distance to connect with the mobile APP, not as an LAN connection
3. The WiFi cannot be turned on when the machine is low power, please replace the AA battery or charging the lithium battery
4. After the APP is downloaded and installed, the mobile phone prompts “Allow TrailCam Plus to access this device’s location?”, please select “While using the app”, and then prompt “Allow TrailCam Plus to access photos and media on your device?”, please select “Allow”. If click “Deny”, APP cannot read camera pictures and videos



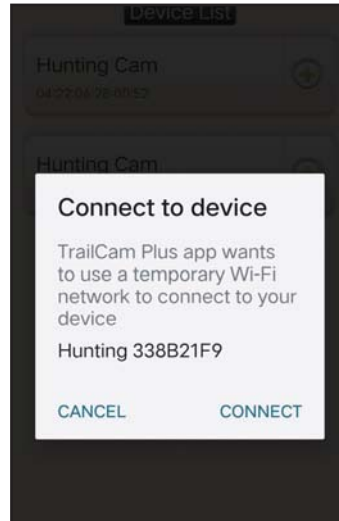
Picture1



Picture2



Picture3



Picture4

## 9. Technical specification

Image and Video	
Image sensor	1/3" CMOS sensor
Screen	2.0" colour TFT LCD; 320 x 240 pixels
Lens	F=4.3; F/NO=2.0; Auto IR filter
Triggering time	approx. 0.1 second
Video resolutions	4K(3840X2160 ,10fps), 2.7K(688X1520,20ps) 1080P(1920X1080,30fps), 720P (1280 X720,30fps) 480P (848 X480,30fps), 360P(640X360,30fps)
Effectiveness	Daytime: 1 m-infinite; Night time: 3 m - 20 m
Storage formats	Photo: JPG; Video: AVI

Audio	
Microphone	48 dB high sensitivity sound collection
Buzzer	2700HZ, 85dB

Trigger	
Detection angle of sensors	Total sensor angle zone: 120°
Triggering distance	up to 20 metres
PIR Sensitivity	High / Medium / Low

Data Storage	
Recording medium	Supports SD/SDHC memory cards up to 32 GB (optional)

Night vision	
Day/Night Mode	Day/night, Auto Switching
IR-CUT	Built-in
IR flash	20pcs 850nm infrared LEDs range 20m

Power Supply and Power Consumption	
Power supply	4x batteries type LR6 (AA);
Standby time	approx. 6 months (When the sun is full)

Others	
Spray water protected	Yes (IP protection class 65)
Connections	Type-C USB 2.0
Dimensions	approx. 145 (H) x 105(B) x 95 (T) mm



**Note:**

- Design and technical specification are subject to change.

## 10.Simple Trouble Shooting

The camera will not turn on	<ul style="list-style-type: none"> <li>•Please charge the trail camera for more than 8 hours with USB cable.</li> <li>•Check if the battery capacity is low or exhausted. If so, please replace them with new batteries.</li> </ul>
The camera turns off automatically	<ul style="list-style-type: none"> <li>•Please check whether the battery capacity is low or exhausted. If so, please charge the trail camera for more than 8 hours or replace new AA battery.</li> <li>•Please check if SD card is full. If so, transfer images and videos to your computer or delete some files in the Replay Mode.</li> </ul>



It shows "SD card Errorf	<ul style="list-style-type: none"> <li>•Please ensure that SD card is with class 10 standard or higher level.</li> <li>•Please use the camera to format SD card at the first time.</li> <li>•Ensure that the computer system requirements are met.</li> </ul>
Videos are choppy or jumpy when played on a computer	<ul style="list-style-type: none"> <li>•Ensure AVI format Video clip can be played on your computer.</li> </ul>
The image is not clear	<ul style="list-style-type: none"> <li>•Please ensure that you removed the protective films on IR LEDs and lens before using.</li> <li>•Please ensure that the lens is not dirty.</li> </ul>
The camera does not take images or record videos	<ul style="list-style-type: none"> <li>•If the memory of SD card is full, transfer images or videos to your computer or delete some files in the Replay Mode.</li> <li>•The memory card is not formatted properly. Format the SD card again or use a new card.</li> </ul>
Camera can not turn off	<ul style="list-style-type: none"> <li>• Please use reset pin to press the reset hole and the device will be restarted.</li> </ul>
Forget the password	<ul style="list-style-type: none"> <li>• Please enter the words "OPEN", in case that you forget the password to start the machine.</li> </ul>

## 11. System information, Maintenance and Disposal

### Trademark information

•Microsoft® and Windows® are trademarks of Microsoft Corporation registered in the US.

•Pentium® is a registered trademark of Intel Corporation. Macintosh is a trademark of Apple Computer Inc. .SD™ is a trademark.

#### 11.1. Care

Do not use any corrosive cleaners, such as methylated spirits, thinners, etc. to clean the camera housing and supplied accessory. When required, please clean system components with a soft dry doth.

#### 11.2. Storage

Always remove the battery from the housing if the camera is not being used for some time and store the battery separately. On a day to day basis and over longer periods the batteries can be kept at a dry location out of the reach of children.

#### 11.3. Disposal

For disposal, separate packaging into different types and dispose of in line with environmental regulations in supplied collection containers. Batteries and storage

batteries may not be disposed of in domestic waste. Consumers are obliged by law to return used batteries to communal collection points or dealers selling batteries. Storage batteries and batteries do therefore contain the adjacent symbol.

Correct disposal of product:

The adjacent symbol indicates that electrical and electronic equipment may not be disposed of in domestic waste in the EU. Please use the returns and collection points of your local council or contact your dealer you purchased the product from. This prevents potentially harmful effects on the environment and health as a result of incorrect disposal. For further information contact the respective department of your local council.

## **12.Hazard, safety and warning notices**

Incorrect use of the camera and accessories can be dangerous for you and others and can damage or destroy the camera. We therefore ask you to read, and strictly observe the following Hazard, safety and warning notices.

### **12.1Intended use**

This camera is intended for taking digital photos and video clips. It has been designed for private use and is not suitable for commercial purposes.

### **12.2Hazards for children and persons with limited ability to operate electronic equipment.**

The camera, accessory and packaging are not toys for children. These should therefore always be kept away from children. Danger of electrocution, poisoning and suffocation.

The camera and accessory may not be used by children and persons with limited abilities. The camera may only be operated by persons physically and mentally able to operate it safely.

### **12.3Electrical hazard**

1.Switch off the camera and remove the batteries if a foreign body or liquid has entered the camera. Let all parts dry thoroughly. Otherwise danger of fire or electrocution.

2.Switch off the camera and remove the batteries if the camera has been dropped or the housing is damaged. Otherwise danger of fire and electrocution. The camera may not be dismantled, modified or repaired. Danger of fire and electrocution.

3.The power supply may not be used during thunderstorms. Otherwise danger of electrocution.

## **FCC STATEMENT**

1. This device complies with Part 15 of the FCC Rules. Operation is subject to the following two conditions:

(1) This device may not cause harmful interference, and

(2) This device must accept any interference received, including interference that may cause undesired operation.

2. Changes or modifications not expressly approved by the party responsible for compliance could void the user's authority to operate the equipment.

NOTE: This equipment has been tested and found to comply with the limits for a Class B digital device, pursuant to Part 15 of the FCC Rules. These limits are designed to provide reasonable protection against harmful interference in a residential installation.

This equipment generates uses and can radiate radio frequency energy and, if not installed and used in accordance with the instructions, may cause harmful interference to radio communications. However, there is no guarantee that interference will not occur in a particular installation. If this equipment does cause harmful interference to radio or television reception, which can be determined by turning the equipment off and on, the user is encouraged to try to correct the interference by one or more of the following measures:

Reorient or relocate the receiving antenna.

Increase the separation between the equipment and receiver.

Connect the equipment into an outlet on a circuit different from that to which the receiver is connected.

Consult the dealer or an experienced radio/TV technician for help.

## **Radiation Exposure Statement**

This equipment complies with FCC radiation exposure limits set forth for an uncontrolled environment. This equipment should be installed and operated with minimum distance 20cm between the radiator & your body