

SAR plots:**DUT: POS Payment Terminal; Type: AMP 7000-FD**

Communication System: GPRS bands-4slots; Frequency: 836.6 MHz; Duty Cycle: 1:2
Medium parameters used: $f = 836.6$ MHz; $\sigma = 0.97$ mho/m; $\epsilon_r = 55.41$; $\rho = 1000$ kg/m³
Phantom section: Flat Section

DASY4 Configuration:

- Probe: EX3DV4 – SN7382; ConvF(10.54, 10.54, 10.54); Calibrated: 26/10/2016
- Sensor-Surface: 4mm (Mechanical Surface Detection)
- Electronics: DAE – SN772; Calibrated: 25/10/2016
- Phantom: TWIN SAM; Type: Twin SAM V5.0; Serial: 1909
- Measurement SW: DASY4, V4.5 Build 19; Postprocessing SW: SEMCAD, V1.8 Build 145

Body back/GPRS 850 Mid/Area Scan (121x121x1): Measurement grid: dx=10mm, dy=10mm
Maximum value of SAR (interpolated) = 0.531 mW/g

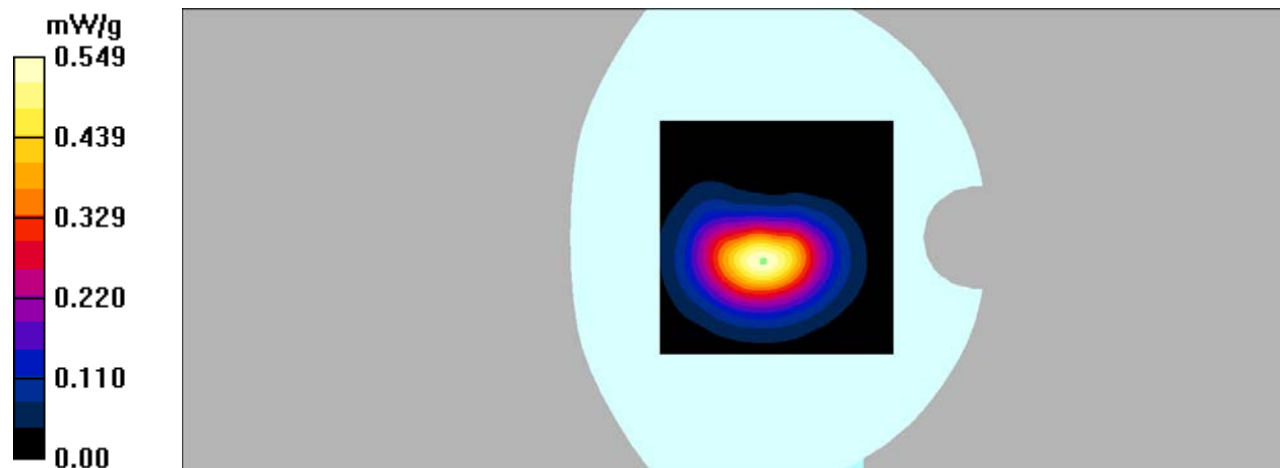
Body back/GPRS 850 Mid/Zoom Scan (7x7x7)/Cube 0: Measurement grid: dx=5mm, dy=5mm, dz=5mm

Reference Value = 19.6 V/m; Power Drift = -0.140 dB

Peak SAR (extrapolated) = 0.722 W/kg

SAR(1 g) = 0.493 mW/g; SAR(10 g) = 0.322 mW/g

Maximum value of SAR (measured) = 0.549 mW/g



DUT: POS Payment Terminal; Type: AMP 7000-FD

Communication System: GPRS bands-4slots; Frequency: 836.6 MHz; Duty Cycle: 1:2
Medium parameters used: $f = 836.6$ MHz; $\sigma = 0.97$ mho/m; $\epsilon_r = 55.41$; $\rho = 1000$ kg/m³
Phantom section: Flat Section

DASY4 Configuration:

- Probe: EX3DV4 – SN7382; ConvF(10.54, 10.54, 10.54); Calibrated: 26/10/2016
- Sensor-Surface: 4mm (Mechanical Surface Detection)
- Electronics: DAE – SN772; Calibrated: 25/10/2016
- Phantom: TWIN SAM; Type: Twin SAM V5.0; Serial: 1909
- Measurement SW: DASY4, V4.5 Build 19; Postprocessing SW: SEMCAD, V1.8 Build 145

Handheld Left/GPRS 850 Mid/Area Scan (121x121x1): Measurement grid: dx=10mm,
dy=10mm

Maximum value of SAR (interpolated) = 0.158 mW/g

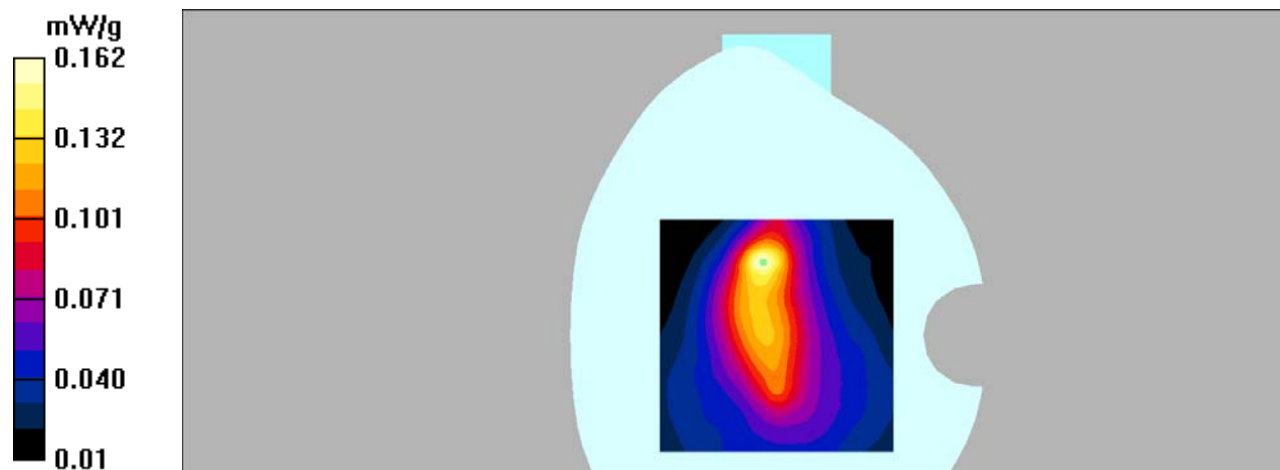
Handheld Left/GPRS 850 Mid/Zoom Scan (7x7x7)/Cube 0: Measurement grid: dx=5mm,
dy=5mm, dz=5mm

Reference Value = 11.1 V/m; Power Drift = 0.026 dB

Peak SAR (extrapolated) = 0.247 W/kg

SAR(1 g) = 0.143 mW/g; SAR(10 g) = 0.092 mW/g

Maximum value of SAR (measured) = 0.162 mW/g



DUT: POS Payment Terminal; Type: AMP 7000-FD

Communication System: GPRS bands-4slots; Frequency: 836.6 MHz; Duty Cycle: 1:2
Medium parameters used: $f = 836.6$ MHz; $\sigma = 0.97$ mho/m; $\epsilon_r = 55.41$; $\rho = 1000$ kg/m³
Phantom section: Flat Section

DASY4 Configuration:

- Probe: EX3DV4 – SN7382; ConvF(10.54, 10.54, 10.54); Calibrated: 26/10/2016
- Sensor-Surface: 4mm (Mechanical Surface Detection)
- Electronics: DAE – SN772; Calibrated: 25/10/2016
- Phantom: TWIN SAM; Type: Twin SAM V5.0; Serial: 1909
- Measurement SW: DASY4, V4.5 Build 19; Postprocessing SW: SEMCAD, V1.8 Build 145

Handheld Right/GPRS 850 Mid/Area Scan (121x121x1): Measurement grid: dx=10mm,
dy=10mm

Maximum value of SAR (interpolated) = 0.115 mW/g

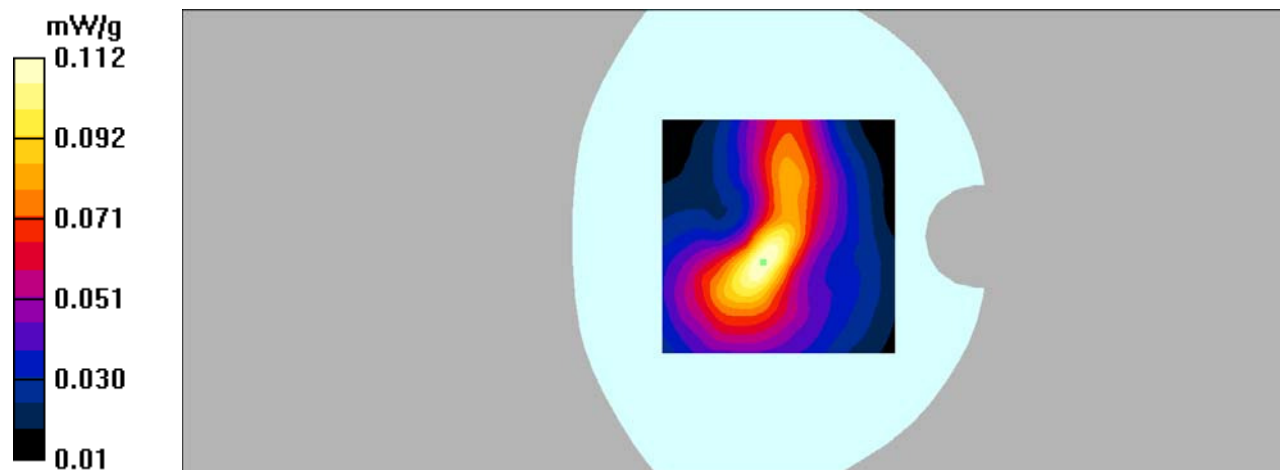
Handheld Right/GPRS 850 Mid/Zoom Scan (7x7x7)/Cube 0: Measurement grid: dx=5mm,
dy=5mm, dz=5mm

Reference Value = 10.2 V/m; Power Drift = -0.088 dB

Peak SAR (extrapolated) = 0.155 W/kg

SAR(1 g) = 0.105 mW/g; SAR(10 g) = 0.068 mW/g

Maximum value of SAR (measured) = 0.112 mW/g



DUT: POS Payment Terminal; Type: AMP 7000-FD

Communication System: GPRS bands-4slots; Frequency: 836.6 MHz; Duty Cycle: 1:2
Medium parameters used: $f = 836.6$ MHz; $\sigma = 0.97$ mho/m; $\epsilon_r = 55.41$; $\rho = 1000$ kg/m³
Phantom section: Flat Section

DASY4 Configuration:

- Probe: EX3DV4 – SN7382; ConvF(10.54, 10.54, 10.54); Calibrated: 26/10/2016
- Sensor-Surface: 4mm (Mechanical Surface Detection)
- Electronics: DAE – SN772; Calibrated: 25/10/2016
- Phantom: TWIN SAM; Type: Twin SAM V5.0; Serial: 1909
- Measurement SW: DASY4, V4.5 Build 19; Postprocessing SW: SEMCAD, V1.8 Build 145

Handheld Top/GPRS 850 Mid/Area Scan (121x121x1): Measurement grid: dx=10mm,
dy=10mm

Maximum value of SAR (interpolated) = 2.03 mW/g

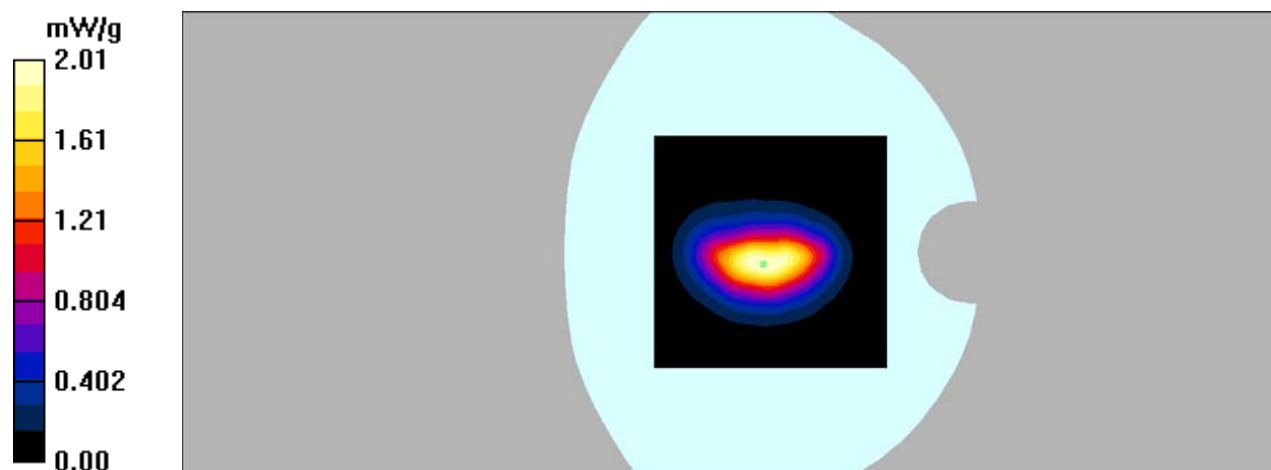
Handheld Top/GPRS 850 Mid/Zoom Scan (7x7x7)/Cube 0: Measurement grid: dx=5mm,
dy=5mm, dz=5mm

Reference Value = 42.7 V/m; Power Drift = -0.00 dB

Peak SAR (extrapolated) = 3.01 W/kg

SAR(1 g) = 1.84 mW/g; SAR(10 g) = 1.11 mW/g

Maximum value of SAR (measured) = 2.01 mW/g



DUT: POS Payment Terminal; Type: AMP 7000-FD

Communication System: GPRS bands-4slots; Frequency: 1880 MHz; Duty Cycle: 1:2
Medium parameters used: $f = 1880$ MHz; $\sigma = 1.52$ mho/m; $\epsilon_r = 52.64$; $\rho = 1000$ kg/m³
Phantom section: Flat Section

DASY4 Configuration:

- Probe: EX3DV4 – SN7382; ConvF(8.31, 8.31, 8.31); Calibrated: 26/10/2016
- Sensor-Surface: 4mm (Mechanical Surface Detection)
- Electronics: DAE – SN772; Calibrated: 25/10/2016
- Phantom: TWIN SAM; Type: Twin SAM V5.0; Serial: 1909
- Measurement SW: DASY4, V4.5 Build 19; Postprocessing SW: SEMCAD, V1.8 Build 145

Body Back/GPRS 1900 Mid/Area Scan (121x121x1): Measurement grid: dx=10mm, dy=10mm
Maximum value of SAR (interpolated) = 0.150 mW/g

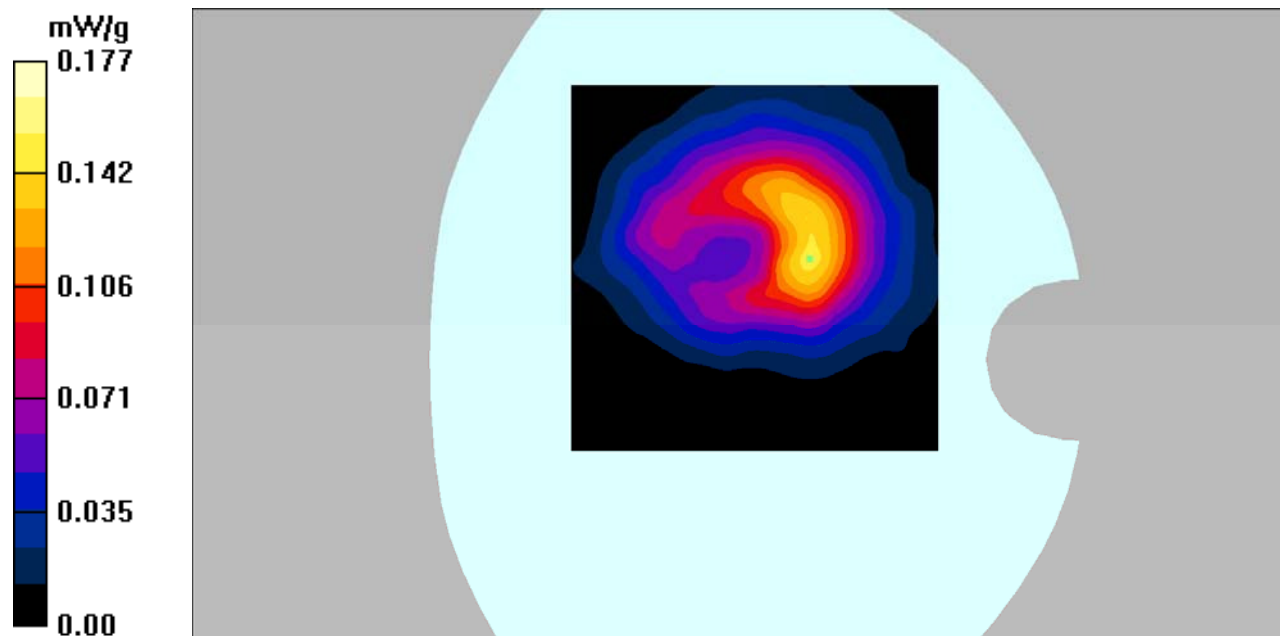
Body Back/GPRS 1900 Mid/Zoom Scan (7x7x7)/Cube 0: Measurement grid: dx=5mm, dy=5mm, dz=5mm

Reference Value = 6.46 V/m; Power Drift = 0.085 dB

Peak SAR (extrapolated) = 0.288 W/kg

SAR(1 g) = 0.146 mW/g; SAR(10 g) = 0.091 mW/g

Maximum value of SAR (measured) = 0.177 mW/g



DUT: POS Payment Terminal; Type: AMP 7000-FD

Communication System: GPRS bands-4slots; Frequency: 1880 MHz; Duty Cycle: 1:2
Medium parameters used: $f = 1880$ MHz; $\sigma = 1.52$ mho/m; $\epsilon_r = 52.64$; $\rho = 1000$ kg/m³
Phantom section: Flat Section

DASY4 Configuration:

- Probe: EX3DV4 – SN7382; ConvF(8.31, 8.31, 8.31); Calibrated: 26/10/2016
- Sensor-Surface: 4mm (Mechanical Surface Detection)
- Electronics: DAE – SN772; Calibrated: 25/10/2016
- Phantom: TWIN SAM; Type: Twin SAM V5.0; Serial: 1909
- Measurement SW: DASY4, V4.5 Build 19; Postprocessing SW: SEMCAD, V1.8 Build 145

Handheld Left/GPRS 1900 Mid/Area Scan (121x121x1): Measurement grid: dx=10mm,
dy=10mm

Maximum value of SAR (interpolated) = 0.232 mW/g

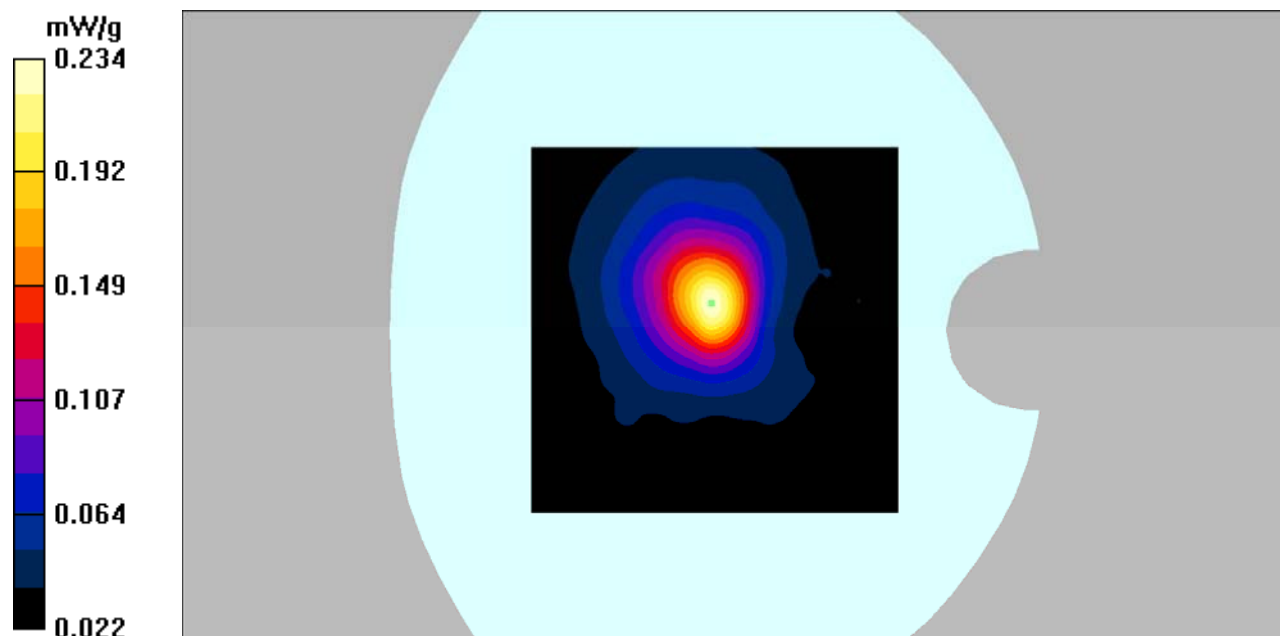
Handheld Left/GPRS 1900 Mid/Zoom Scan (7x7x7)/Cube 0: Measurement grid: dx=5mm,
dy=5mm, dz=5mm

Reference Value = 11.1 V/m; Power Drift = 0.106 dB

Peak SAR (extrapolated) = 0.390 W/kg

SAR(1 g) = 0.211 mW/g; SAR(10 g) = 0.116 mW/g

Maximum value of SAR (measured) = 0.234 mW/g



DUT: POS Payment Terminal; Type: AMP 7000-FD

Communication System: GPRS bands-4slots; Frequency: 1880 MHz; Duty Cycle: 1:2
Medium parameters used: $f = 1880$ MHz; $\sigma = 1.52$ mho/m; $\epsilon_r = 52.64$; $\rho = 1000$ kg/m³
Phantom section: Flat Section

DASY4 Configuration:

- Probe: EX3DV4 – SN7382; ConvF(8.31, 8.31, 8.31); Calibrated: 26/10/2016
- Sensor-Surface: 4mm (Mechanical Surface Detection)
- Electronics: DAE – SN772; Calibrated: 25/10/2016
- Phantom: TWIN SAM; Type: Twin SAM V5.0; Serial: 1909
- Measurement SW: DASY4, V4.5 Build 19; Postprocessing SW: SEMCAD, V1.8 Build 145

Handheld Right/GPRS 1900 Mid/Area Scan (121x141x1): Measurement grid: dx=10mm, dy=10mm

Maximum value of SAR (interpolated) = 0.026 mW/g

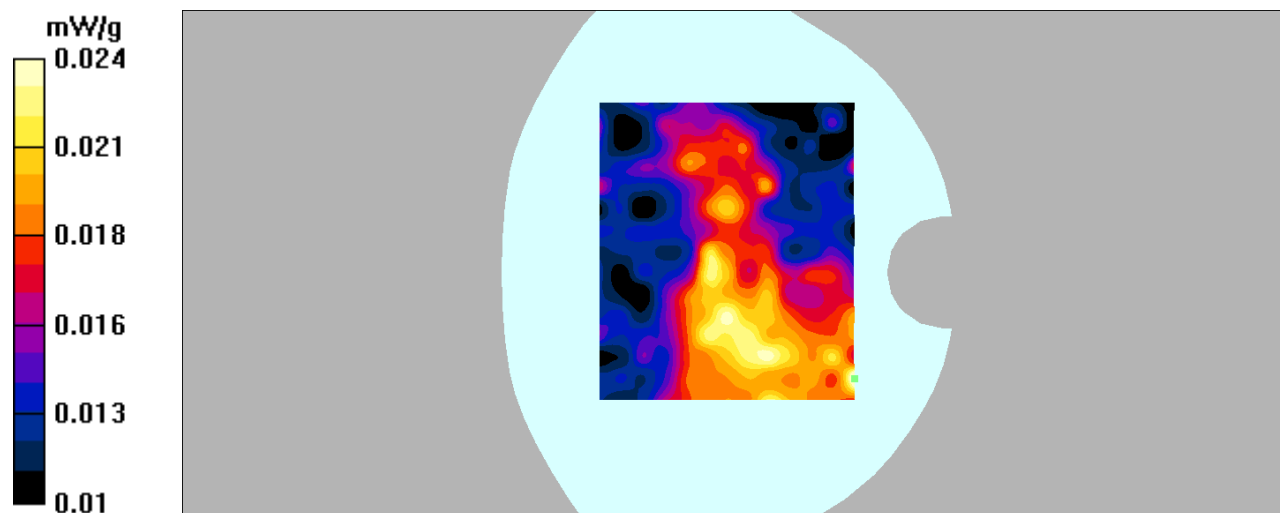
Handheld Right/GPRS 1900 Mid/Zoom Scan (7x7x7)/Cube 0: Measurement grid: dx=5mm, dy=5mm, dz=5mm

Reference Value = 3.33 V/m; Power Drift = 0.210 dB

Peak SAR (extrapolated) = 0.030 W/kg

SAR(1 g) = 0.020 mW/g; SAR(10 g) = 0.017 mW/g

Maximum value of SAR (measured) = 0.024 mW/g



DUT: POS Payment Terminal; Type: AMP 7000-FD

Communication System: GPRS bands-4slots; Frequency: 1880 MHz; Duty Cycle: 1:2
Medium parameters used: $f = 1880$ MHz; $\sigma = 1.52$ mho/m; $\epsilon_r = 52.64$; $\rho = 1000$ kg/m³
Phantom section: Flat Section

DASY4 Configuration:

- Probe: EX3DV4 – SN7382; ConvF(8.31, 8.31, 8.31); Calibrated: 26/10/2016
- Sensor-Surface: 4mm (Mechanical Surface Detection)
- Electronics: DAE – SN772; Calibrated: 25/10/2016
- Phantom: TWIN SAM; Type: Twin SAM V5.0; Serial: 1909
- Measurement SW: DASY4, V4.5 Build 19; Postprocessing SW: SEMCAD, V1.8 Build 145

Handheld Top/GPRS 1900 Mid/Area Scan (91x101x1): Measurement grid: dx=10mm,
dy=10mm

Maximum value of SAR (interpolated) = 0.787 mW/g

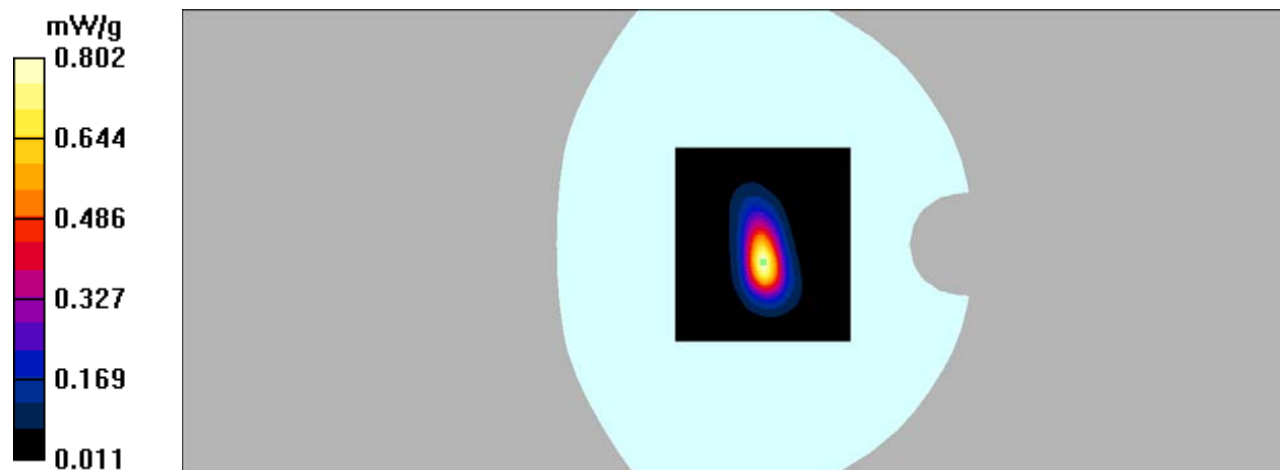
Handheld Top/GPRS 1900 Mid/Zoom Scan (7x7x7)/Cube 0: Measurement grid: dx=5mm,
dy=5mm, dz=5mm

Reference Value = 20.7 V/m; Power Drift = -0.099 dB

Peak SAR (extrapolated) = 1.71 W/kg

SAR(1 g) = 0.682 mW/g; SAR(10 g) = 0.279 mW/g

Maximum value of SAR (measured) = 0.802 mW/g



DUT: POS Payment Terminal; Type: AMP 7000-FD

Communication System: 3G Bands; Frequency: 836.6 MHz; Duty Cycle: 1:1

Medium parameters used: $f = 836.6$ MHz; $\sigma = 0.97$ mho/m; $\epsilon_r = 55.41$; $\rho = 1000$ kg/m³

Phantom section: Flat Section

DASY4 Configuration:

- Probe: EX3DV4 – SN7382; ConvF(10.54, 10.54, 10.54); Calibrated: 26/10/2016
- Sensor-Surface: 4mm (Mechanical Surface Detection)
- Electronics: DAE – SN772; Calibrated: 25/10/2016
- Phantom: TWIN SAM; Type: Twin SAM V5.0; Serial: 1909
- Measurement SW: DASY4, V4.5 Build 19; Postprocessing SW: SEMCAD, V1.8 Build 145

Body Back/WCDMA Band 5 Mid/Area Scan (121x121x1): Measurement grid: dx=10mm, dy=10mm

Maximum value of SAR (interpolated) = 0.567 mW/g

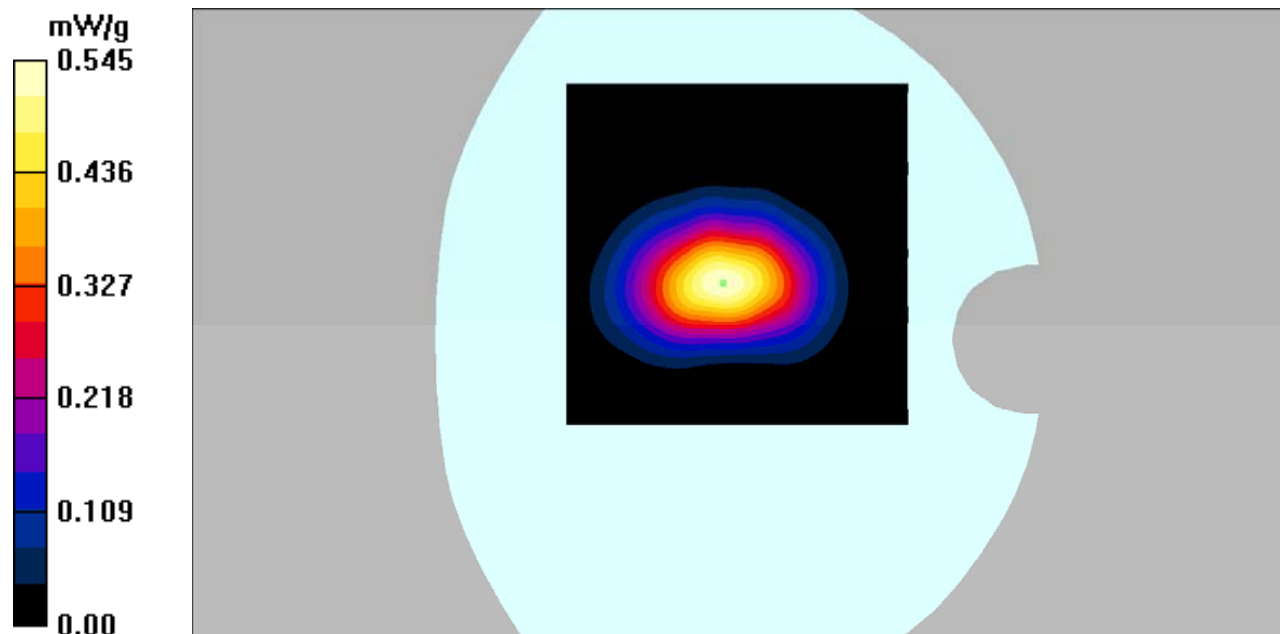
Body Back/WCDMA Band 5 Mid/Zoom Scan (7x7x7)/Cube 0: Measurement grid: dx=5mm, dy=5mm, dz=5mm

Reference Value = 18.3 V/m; Power Drift = 0.125 dB

Peak SAR (extrapolated) = 0.776 W/kg

SAR(1 g) = 0.514 mW/g; SAR(10 g) = 0.321 mW/g

Maximum value of SAR (measured) = 0.545 mW/g



DUT: POS Payment Terminal; Type: AMP 7000-FD

Communication System: 3G Bands; Frequency: 836.6 MHz; Duty Cycle: 1:1

Medium parameters used: $f = 836.6$ MHz; $\sigma = 0.97$ mho/m; $\epsilon_r = 55.41$; $\rho = 1000$ kg/m³

Phantom section: Flat Section

DASY4 Configuration:

- Probe: EX3DV4 – SN7382; ConvF(10.54, 10.54, 10.54); Calibrated: 26/10/2016
- Sensor-Surface: 4mm (Mechanical Surface Detection)
- Electronics: DAE – SN772; Calibrated: 25/10/2016
- Phantom: TWIN SAM; Type: Twin SAM V5.0; Serial: 1909
- Measurement SW: DASY4, V4.5 Build 19; Postprocessing SW: SEMCAD, V1.8 Build 145

Handheld Left/WCDMA Band 5 Mid/Area Scan (121x121x1): Measurement grid: dx=10mm, dy=10mm

Maximum value of SAR (interpolated) = 0.185 mW/g

Handheld Left/WCDMA Band 5 Mid/Zoom Scan (7x7x7)/Cube 0: Measurement grid:

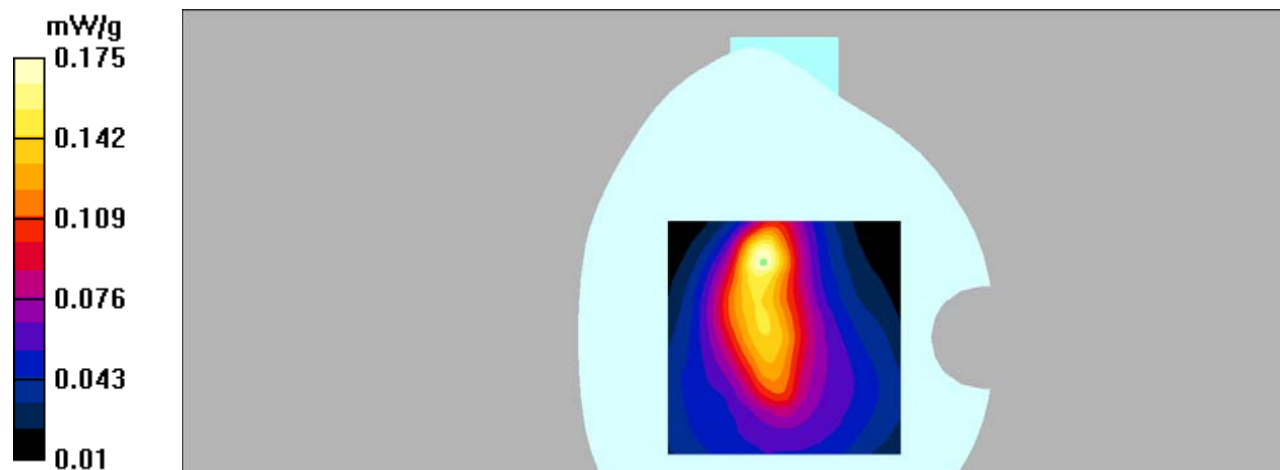
dx=5mm, dy=5mm, dz=5mm

Reference Value = 11.7 V/m; Power Drift = -0.021 dB

Peak SAR (extrapolated) = 0.266 W/kg

SAR(1 g) = 0.165 mW/g; SAR(10 g) = 0.108 mW/g

Maximum value of SAR (measured) = 0.175 mW/g



DUT: POS Payment Terminal; Type: AMP 7000-FD

Communication System: 3G Bands; Frequency: 836.6 MHz; Duty Cycle: 1:1

Medium parameters used: $f = 836.6$ MHz; $\sigma = 0.97$ mho/m; $\epsilon_r = 55.41$; $\rho = 1000$ kg/m³

Phantom section: Flat Section

DASY4 Configuration:

- Probe: EX3DV4 – SN7382; ConvF(10.54, 10.54, 10.54); Calibrated: 26/10/2016
- Sensor-Surface: 4mm (Mechanical Surface Detection)
- Electronics: DAE – SN772; Calibrated: 25/10/2016
- Phantom: TWIN SAM; Type: Twin SAM V5.0; Serial: 1909
- Measurement SW: DASY4, V4.5 Build 19; Postprocessing SW: SEMCAD, V1.8 Build 145

Handheld Right/WCDMA Band 5 Mid/Area Scan (121x121x1): Measurement grid: dx=10mm, dy=10mm

Maximum value of SAR (interpolated) = 0.042 mW/g

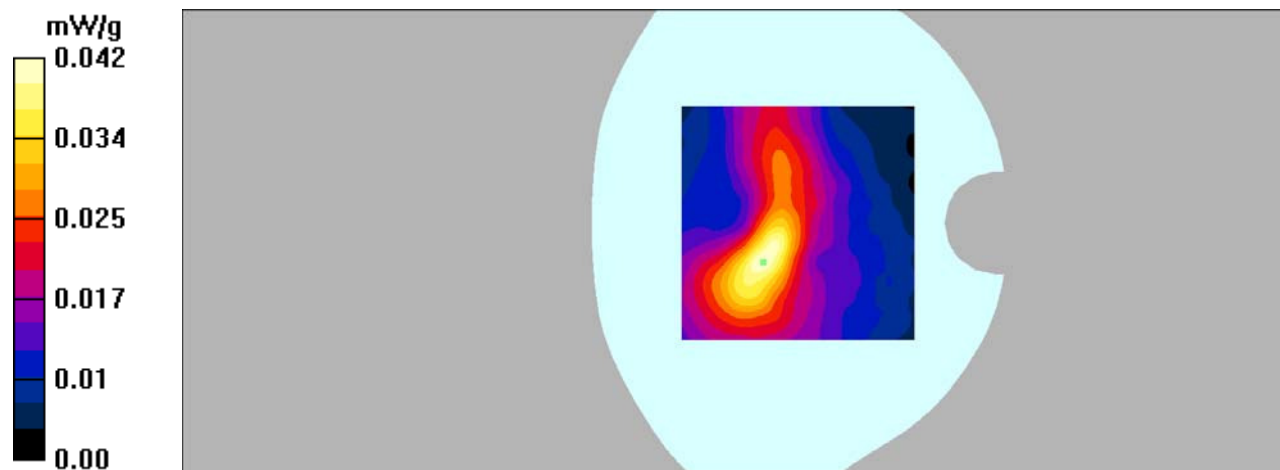
Handheld Right/WCDMA Band 5 Mid/Zoom Scan (7x7x7)/Cube 0: Measurement grid: dx=5mm, dy=5mm, dz=5mm

Reference Value = 5.22 V/m; Power Drift = 0.159 dB

Peak SAR (extrapolated) = 0.055 W/kg

SAR(1 g) = 0.038 mW/g; SAR(10 g) = 0.025 mW/g

Maximum value of SAR (measured) = 0.042 mW/g



DUT: POS Payment Terminal; Type: AMP 7000-FD

Communication System: 3G Bands; Frequency: 836.6 MHz; Duty Cycle: 1:1

Medium parameters used: $f = 836.6$ MHz; $\sigma = 0.97$ mho/m; $\epsilon_r = 55.41$; $\rho = 1000$ kg/m³

Phantom section: Flat Section

DASY4 Configuration:

- Probe: EX3DV4 – SN7382; ConvF(10.54, 10.54, 10.54); Calibrated: 26/10/2016
- Sensor-Surface: 4mm (Mechanical Surface Detection)
- Electronics: DAE – SN772; Calibrated: 25/10/2016
- Phantom: TWIN SAM; Type: Twin SAM V5.0; Serial: 1909
- Measurement SW: DASY4, V4.5 Build 19; Postprocessing SW: SEMCAD, V1.8 Build 145

Handheld Top/WCDMA Band 5 Mid/Area Scan (121x121x1): Measurement grid: dx=10mm, dy=10mm

Maximum value of SAR (interpolated) = 2.46 mW/g

Handheld Top/ WCDMA Band 5 Mid/Zoom Scan (7x7x7)/Cube 0: Measurement grid:

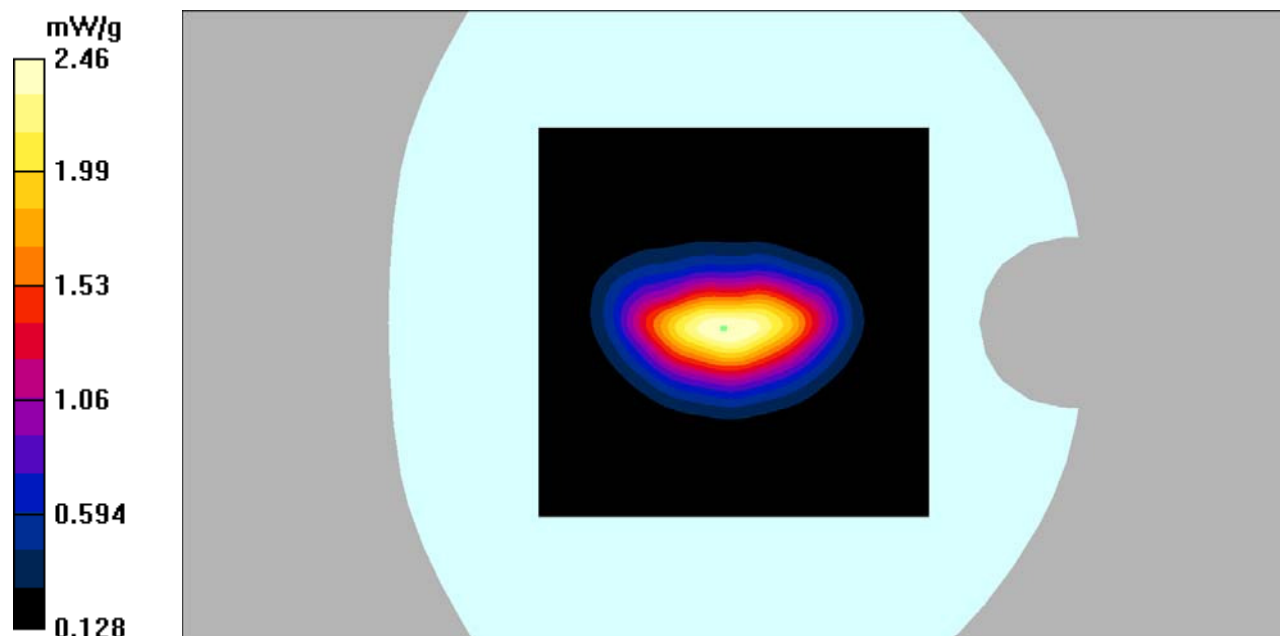
dx=5mm, dy=5mm, dz=5mm

Reference Value = 50.3 V/m; Power Drift = -0.110 dB

Peak SAR (extrapolated) = 3.54 W/kg

SAR(1 g) = 2.24 mW/g; SAR(10 g) = 1.33 mW/g

Maximum value of SAR (measured) = 2.46 mW/g



DUT: POS Payment Terminal; Type: AMP 7000-FD;

Communication System: 3G Bands; Frequency: 1852.4 MHz; Duty Cycle: 1:1
Medium parameters used: $f = 1852.4$ MHz; $\sigma = 1.52$ mho/m; $\epsilon_r = 53.72$; $\rho = 1000$ kg/m³
Phantom section: Flat Section

DASY4 Configuration:

- Probe: EX3DV4 – SN7382; ConvF(8.31, 8.31, 8.31); Calibrated: 26/10/2016
- Sensor-Surface: 4mm (Mechanical Surface Detection)
- Electronics: DAE – SN772; Calibrated: 25/10/2016
- Phantom: TWIN SAM; Type: Twin SAM V5.0; Serial: 1909
- Measurement SW: DASY4, V4.5 Build 19; Postprocessing SW: SEMCAD, V1.8 Build 145

Body Back/WCDMA Band 2 Low/Area Scan (121x121x1): Measurement grid: dx=10mm, dy=10mm

Maximum value of SAR (interpolated) = 0.252 mW/g

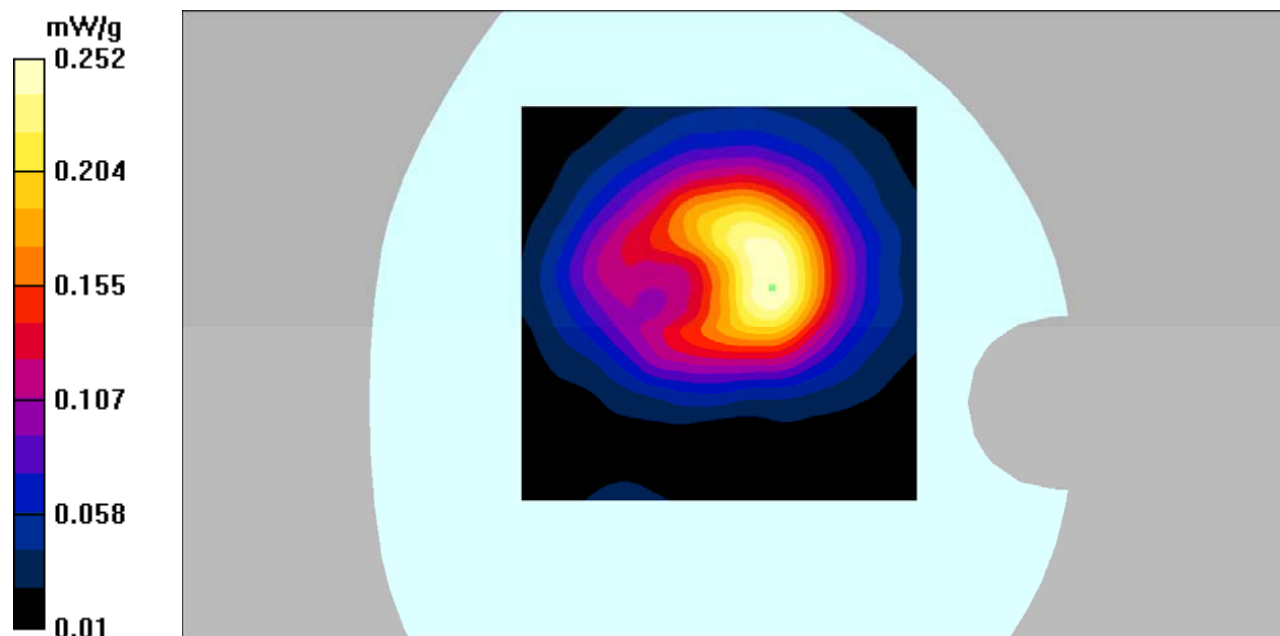
Body Back/WCDMA Band 2 Low/Zoom Scan (7x7x7)/Cube 0: Measurement grid: dx=5mm, dy=5mm, dz=5mm

Reference Value = 5.39 V/m; Power Drift = 0.142 dB

Peak SAR (extrapolated) = 0.401 W/kg

SAR(1 g) = 0.233 mW/g; SAR(10 g) = 0.137 mW/g

Maximum value of SAR (measured) = 0.252 mW/g



DUT: POS Payment Terminal; Type: AMP 7000-FD

Communication System: 3G Bands; Frequency: 1852.4 MHz; Duty Cycle: 1:1

Medium parameters used: $f = 1852.4$ MHz; $\sigma = 1.52$ mho/m; $\epsilon_r = 53.72$; $\rho = 1000$ kg/m³

Phantom section: Flat Section

DASY4 Configuration:

- Probe: EX3DV4 – SN7382; ConvF(8.31, 8.31, 8.31); Calibrated: 26/10/2016
- Sensor-Surface: 4mm (Mechanical Surface Detection)
- Electronics: DAE – SN772; Calibrated: 25/10/2016
- Phantom: TWIN SAM; Type: Twin SAM V5.0; Serial: 1909
- Measurement SW: DASY4, V4.5 Build 19; Postprocessing SW: SEMCAD, V1.8 Build 145

Handheld Left/WCDMA Band 2 Low/Area Scan (121x121x1): Measurement grid: dx=10mm, dy=10mm

Maximum value of SAR (interpolated) = 0.530 mW/g

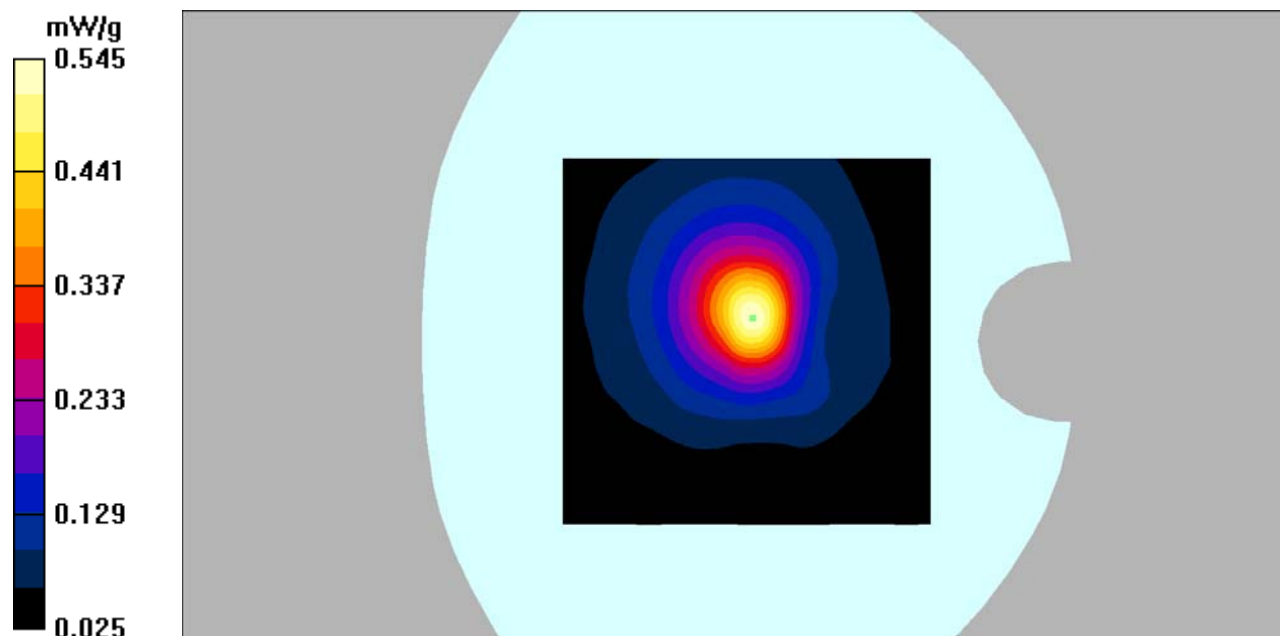
Handheld Left/WCDMA Band 2 Low/Zoom Scan (7x7x7)/Cube 0: Measurement grid: dx=5mm, dy=5mm, dz=5mm

Reference Value = 17.0 V/m; Power Drift = 0.053 dB

Peak SAR (extrapolated) = 0.926 W/kg

SAR(1 g) = 0.490 mW/g; SAR(10 g) = 0.261 mW/g

Maximum value of SAR (measured) = 0.545 mW/g



DUT: POS Payment Terminal; Type: AMP 7000-FD

Communication System: 3G Bands; Frequency: 1852.4 MHz; Duty Cycle: 1:1

Medium parameters used: $f = 1852.4$ MHz; $\sigma = 1.52$ mho/m; $\epsilon_r = 53.72$; $\rho = 1000$ kg/m³

Phantom section: Flat Section

DASY4 Configuration:

- Probe: EX3DV4 – SN7382; ConvF(8.31, 8.31, 8.31); Calibrated: 26/10/2016
- Sensor-Surface: 4mm (Mechanical Surface Detection)
- Electronics: DAE – SN772; Calibrated: 25/10/2016
- Phantom: TWIN SAM; Type: Twin SAM V5.0; Serial: 1909
- Measurement SW: DASY4, V4.5 Build 19; Postprocessing SW: SEMCAD, V1.8 Build 145

Handheld Right/WCDMA Band 2 Low/Area Scan (121x141x1): Measurement grid: dx=10mm, dy=10mm

Maximum value of SAR (interpolated) = 0.053 mW/g

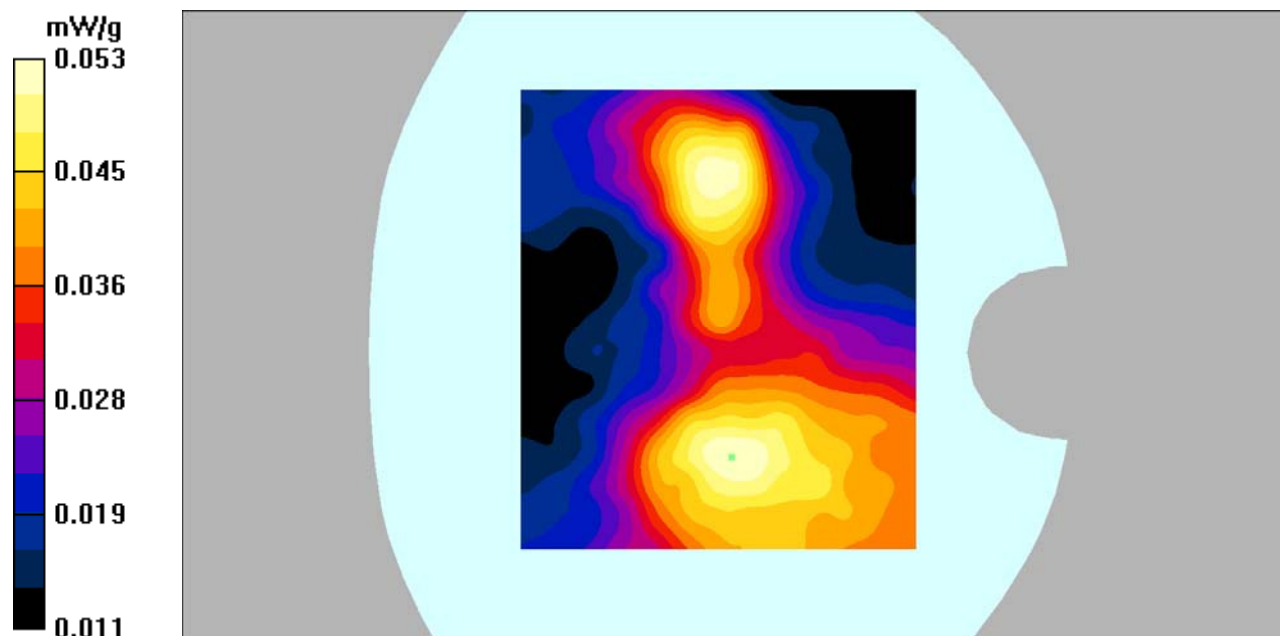
Handheld Right/WCDMA Band 2 Low/Zoom Scan (7x7x7)/Cube 0: Measurement grid: dx=5mm, dy=5mm, dz=5mm

Reference Value = 4.58 V/m; Power Drift = -0.063 dB

Peak SAR (extrapolated) = 0.082 W/kg

SAR(1 g) = 0.049 mW/g; SAR(10 g) = 0.035 mW/g

Maximum value of SAR (measured) = 0.053 mW/g



DUT: POS Payment Terminal; Type: AMP 7000-FD;

Communication System: 3G Bands; Frequency: 1852.4 MHz; Duty Cycle: 1:1

Medium parameters used: $f = 1852.4$ MHz; $\sigma = 1.52$ mho/m; $\epsilon_r = 53.72$; $\rho = 1000$ kg/m³

Phantom section: Flat Section

DASY4 Configuration:

- Probe: EX3DV4 – SN7382; ConvF(8.31, 8.31, 8.31); Calibrated: 26/10/2016
- Sensor-Surface: 4mm (Mechanical Surface Detection)
- Electronics: DAE – SN772; Calibrated: 25/10/2016
- Phantom: TWIN SAM; Type: Twin SAM V5.0; Serial: 1909
- Measurement SW: DASY4, V4.5 Build 19; Postprocessing SW: SEMCAD, V1.8 Build 145

Handheld Top/WCDMA Band 2 Low/Area Scan (91x101x1): Measurement grid: dx=10mm, dy=10mm

Maximum value of SAR (interpolated) = 4.13 mW/g

Handheld Top/WCDMA Band 2 Low/Zoom Scan (7x7x7)/Cube 0: Measurement grid: dx=5mm, dy=5mm, dz=5mm

Reference Value = 47.6 V/m; Power Drift = 0.069 dB

Peak SAR (extrapolated) = 9.39 W/kg

SAR(1 g) = 3.69 mW/g; SAR(10 g) = 1.56 mW/g

Maximum value of SAR (measured) = 4.28 mW/g

