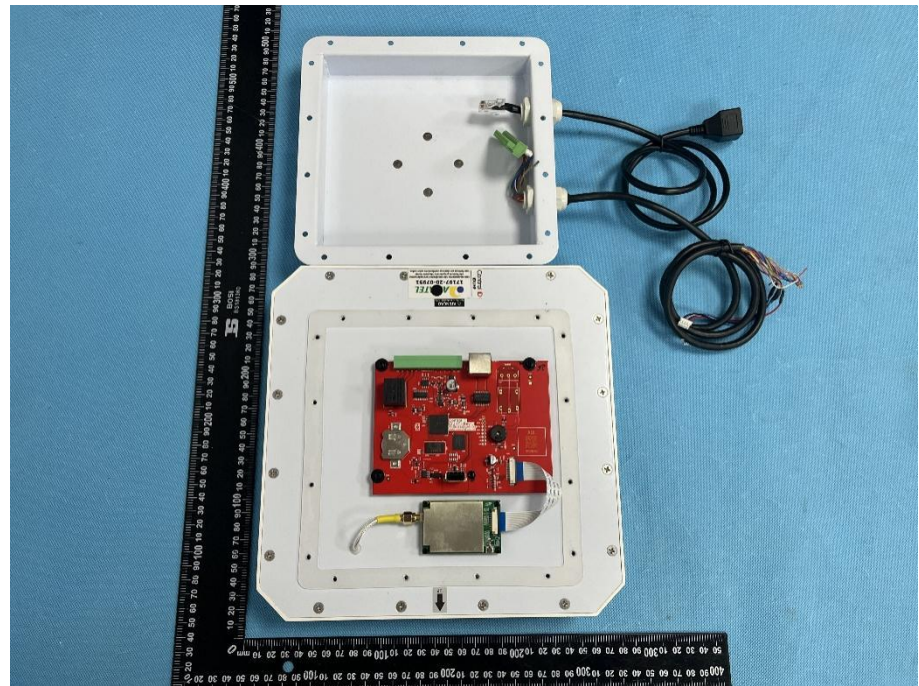


EXHIBIT 3 - EUT INTERNAL PHOTOGRAPHS

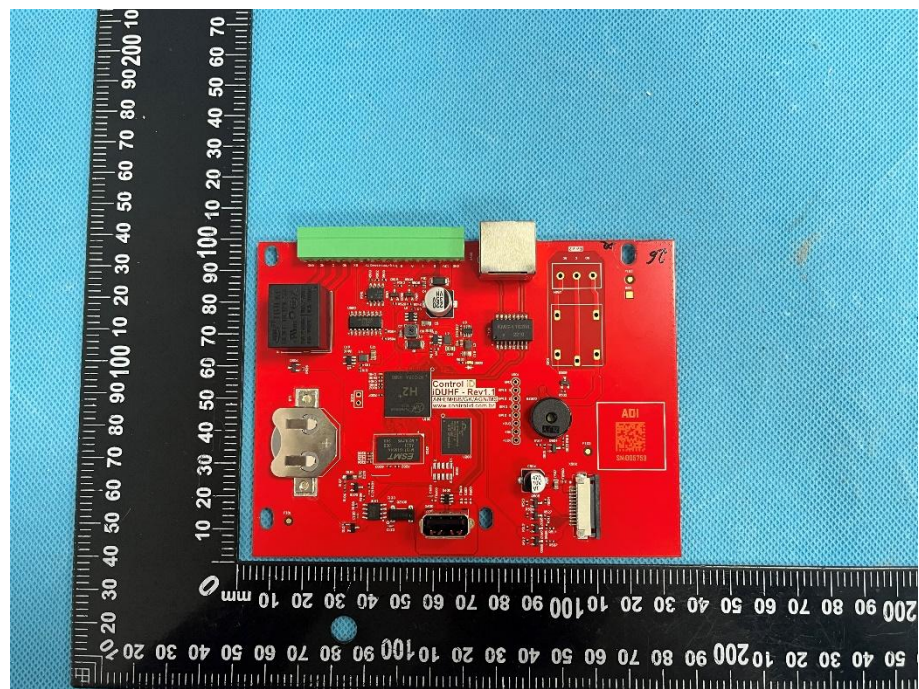
EUT Housing and Board View 1



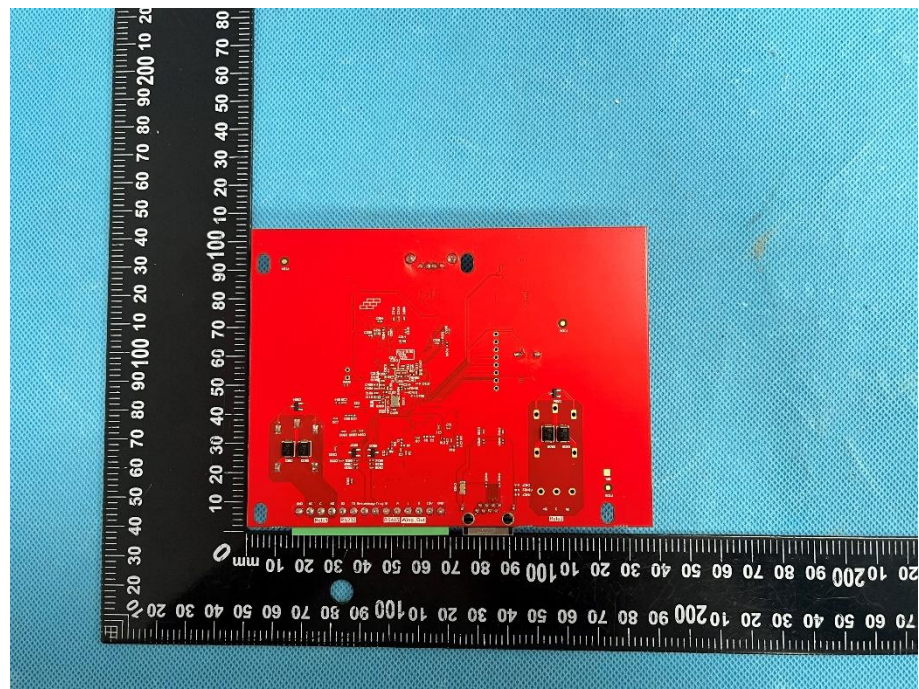
EUT Housing and Board View 2

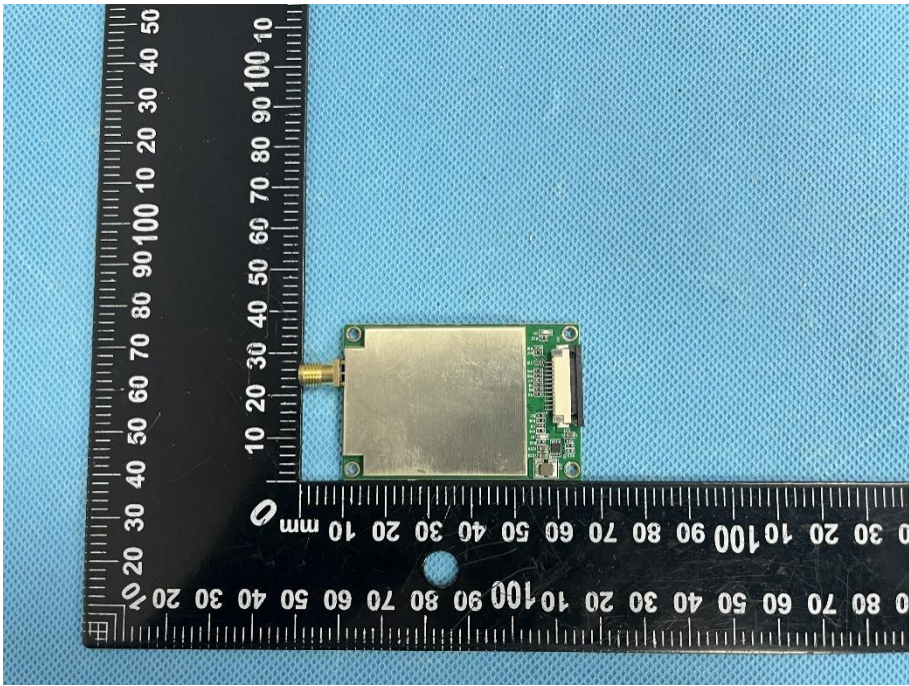
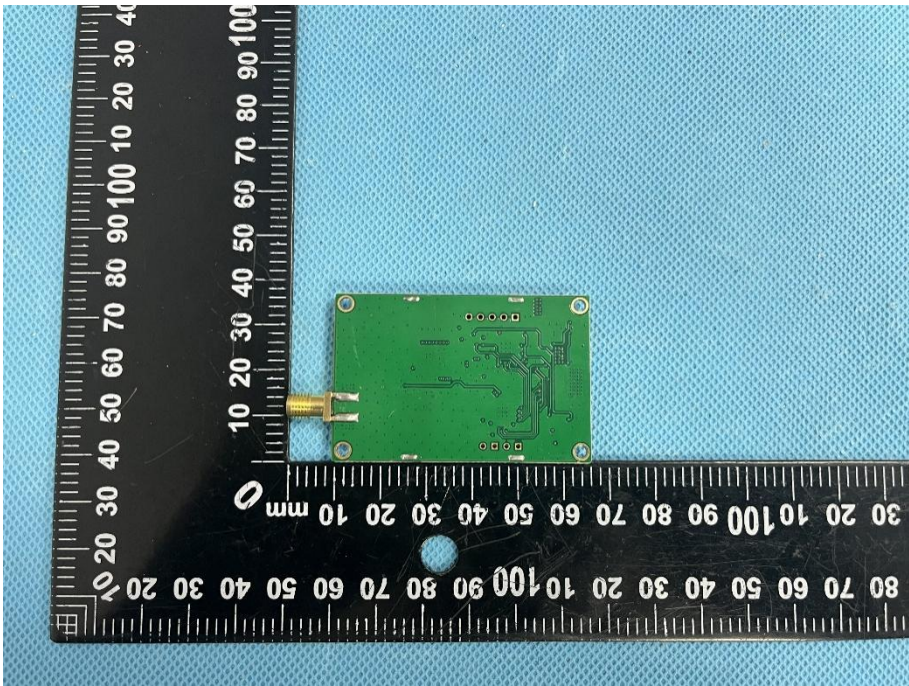


**Solder
Board-Component
View 1**

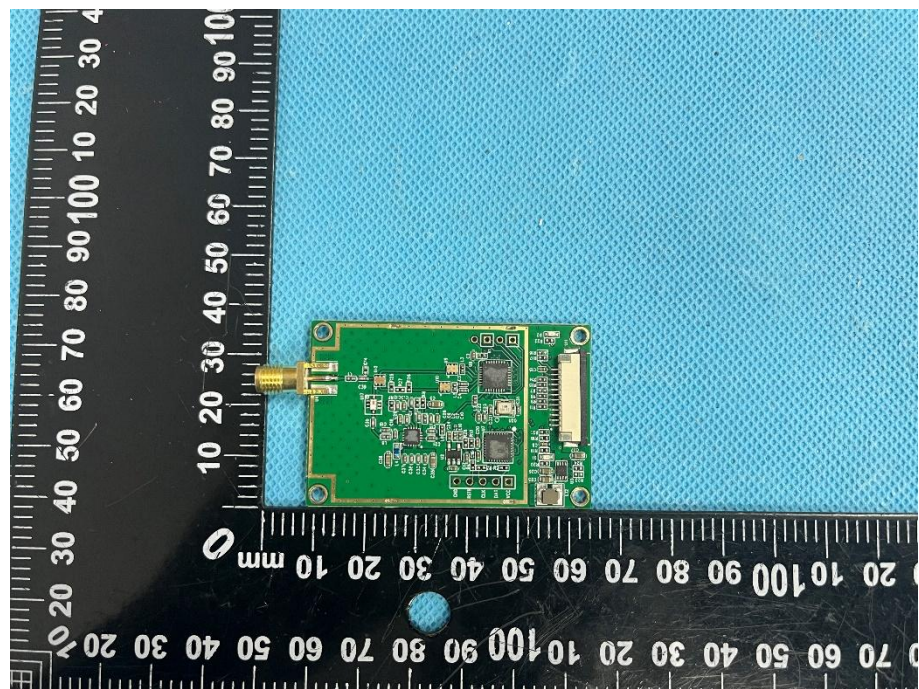


**Solder
Board-Component
View 2**



<p>Solder Board-Component View 3</p>	 A photograph showing the top surface of a rectangular green printed circuit board (PCB) component. The component is positioned on a blue textured surface. A black L-shaped ruler is placed next to it for scale. The ruler's vertical scale on the left is marked from 0 to 100 mm, and the horizontal scale at the bottom is also marked from 0 to 100 mm. The component features a large, rectangular, silver-colored metal shield covering most of its top surface. On the left side, there is a gold-colored SMA connector. On the right side, there is a multi-pin connector. The PCB has several small components and traces visible around the edges of the shield.
<p>Solder Board-Component View 4</p>	 A photograph showing the bottom surface of the same rectangular green PCB component. The component is positioned on a blue textured surface. A black L-shaped ruler is placed next to it for scale. The ruler's vertical scale on the left is marked from 0 to 100 mm, and the horizontal scale at the bottom is also marked from 0 to 100 mm. The component's bottom surface shows the green PCB material with various traces, pads, and components. The gold-colored SMA connector is visible on the left side. The multi-pin connector is visible on the right side. The component is held in place by four small circular solder joints at the corners.

**Solder
Board-Component
View 5**



Antenna View

