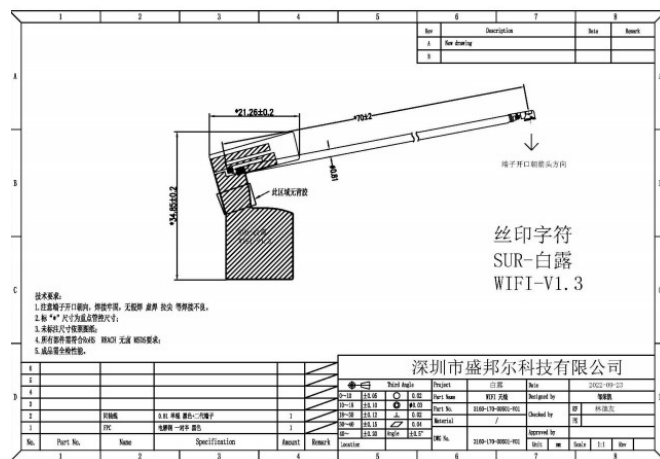


## 1. Antenna Information

Product Model	FP2
Antenna Model	SUR-白露-WiFi
Antenna Type	PIFA
Manufacturer	Shenzhen Surbaner Technology CO.;LTD

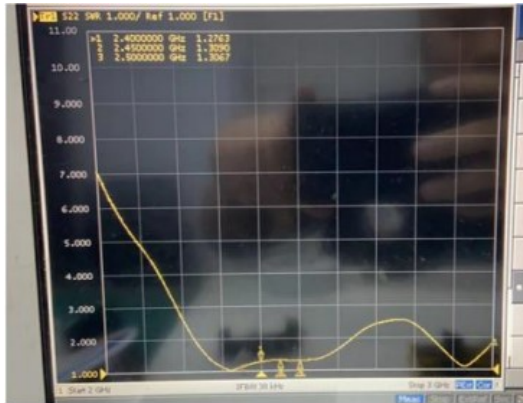
## 2. Antenna Picture



## 3. Electrical Specification

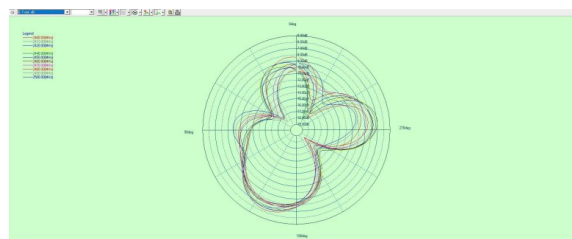
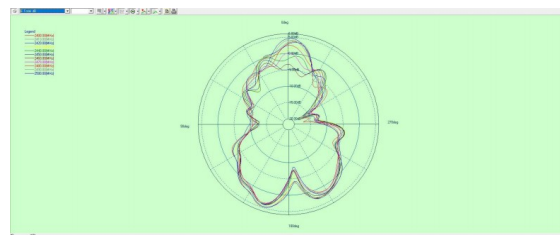
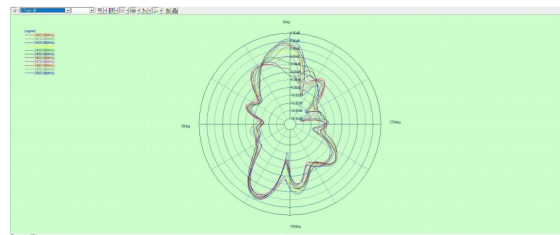
Frequency Range	2400MHZ-2500 MHZ
Bandwidth	100MHz
Input Impedence	50Ω
S11	≤-10 dB
Peak Gain	1dBi

## 4. Antenna S11



Frequency(MHz)	2400	2450	2500
VSWR	1.27	1.30	1.30

## 5. Radiation Pattern



## 6. Test Results

<b>Frequency ID</b>	<b>Frequency (MHz)</b>	<b>Gain (dBi)</b>	<b>Efficiency (dB)</b>	<b>Efficiency (%)</b>
<b>1</b>	<b>2400</b>	0.82	-3.58	43.84
<b>2</b>	<b>2410</b>	0.71	-3.69	42.8
<b>3</b>	<b>2420</b>	0.54	-3.95	40.26
<b>4</b>	<b>2430</b>	0.14	-3.53	44.36
<b>5</b>	<b>2440</b>	-0.19	-3.87	41
<b>6</b>	<b>2450</b>	-0.1	-3.82	41.51
<b>7</b>	<b>2460</b>	-0.09	-3.78	41.9
<b>8</b>	<b>2470</b>	-0.21	-3.79	41.78
<b>9</b>	<b>2480</b>	0.15	-3.47	45
<b>10</b>	<b>2490</b>	0.66	-3.87	41.02
<b>11</b>	<b>2500</b>	0.95	-3.71	42.53