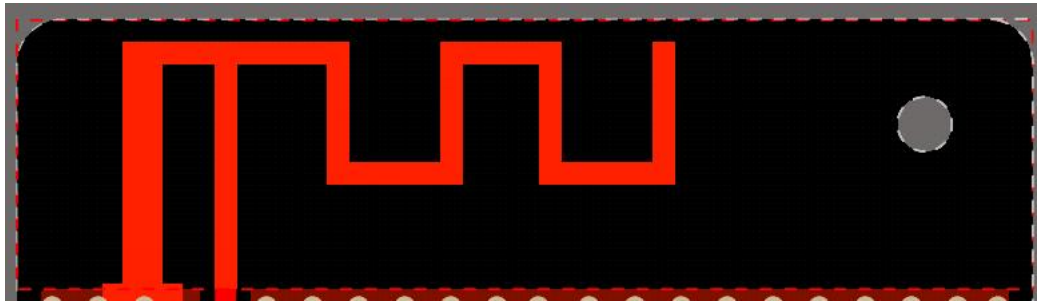


1. Antenna Information

Product Model	P2
Antenna Model	P2-Zigbee
Antenna Type	PIFA
Manufacturer	Lumi United Technology Co., Ltd

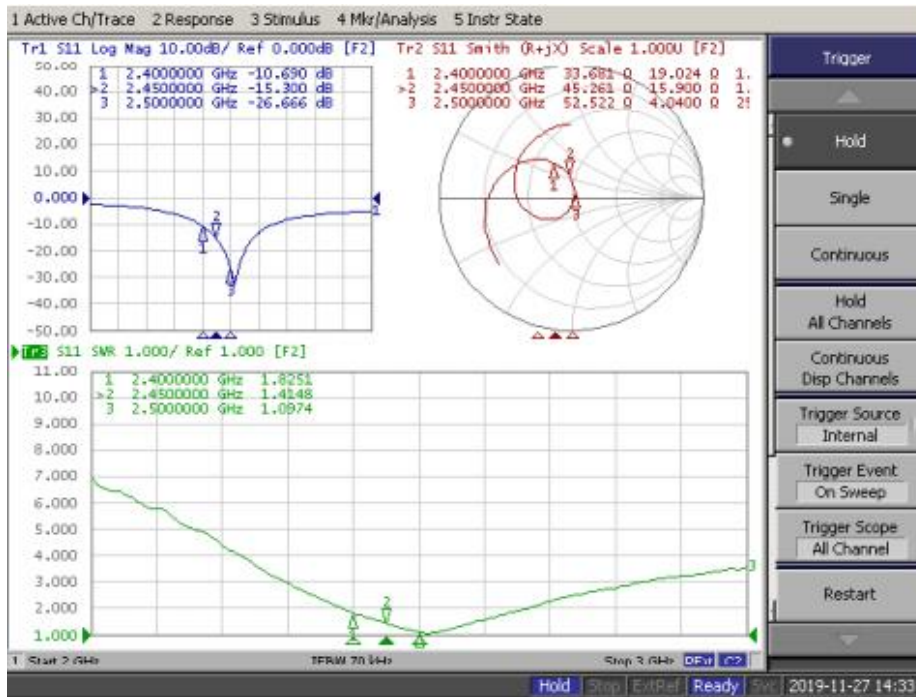
2. Antenna Picture



3. Electrical Specification

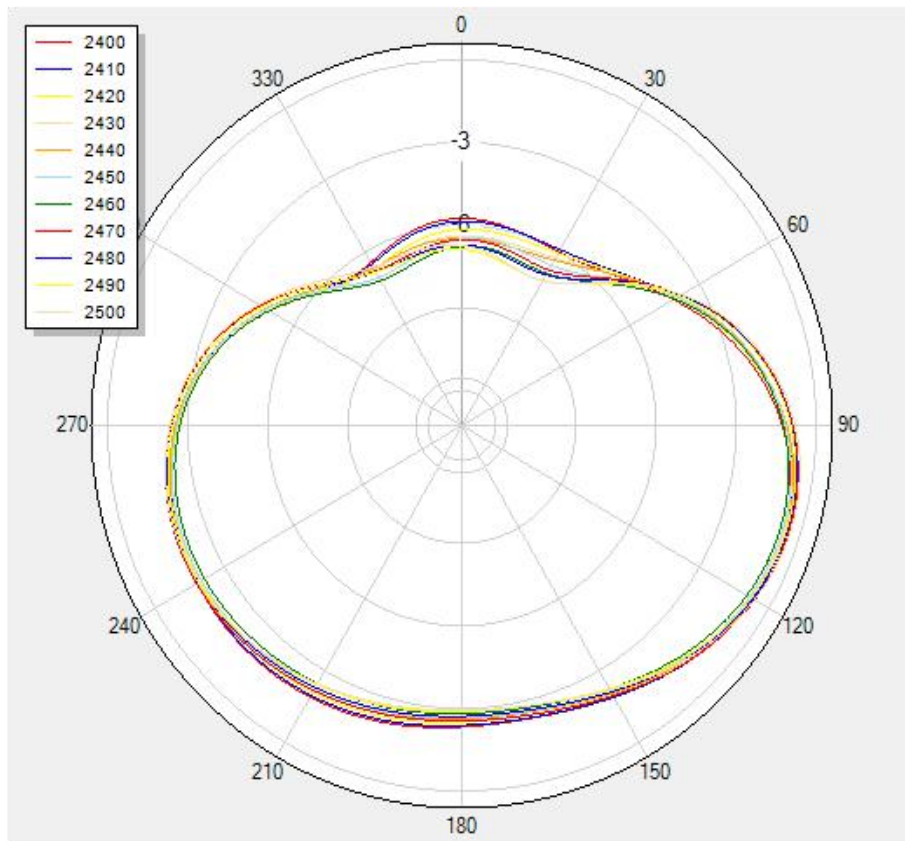
Frequency Range	2400MHZ-2500 MHZ
Bandwidth	100MHz
Input Impedence	50Ω
S11	≤-10 dB
Peak Gain	0.95dBi

4. Antenna S11

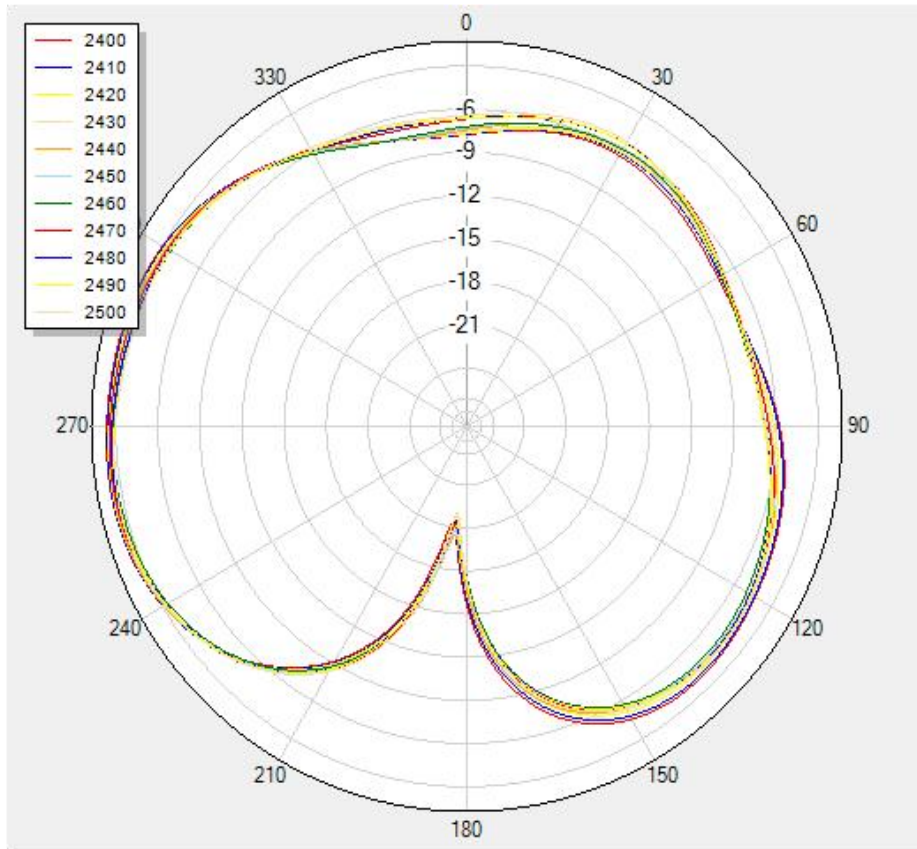


5. Radiation Pattern

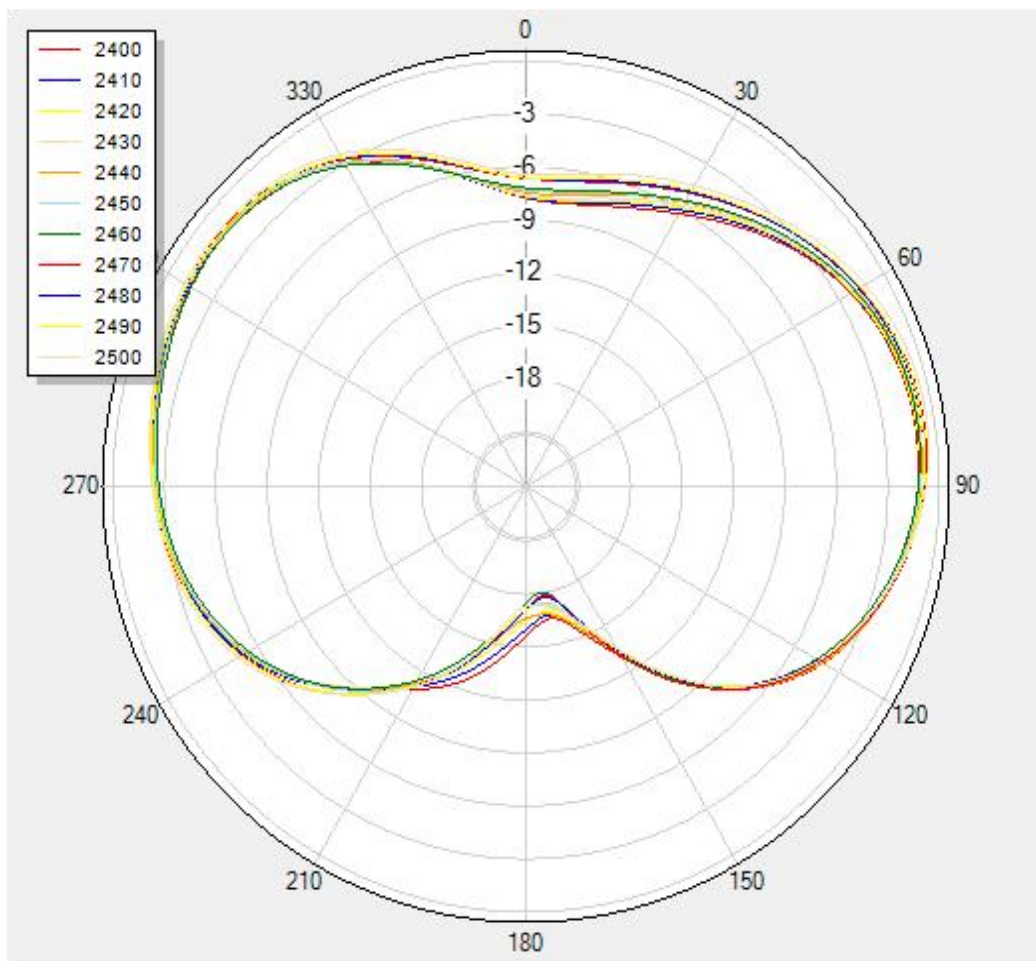
H Theta=90



V Phi=0



V Phi=90



6. Test Results

Frequency ID	Frequency (MHz)	Gain (dBi)	Efficiency (dB)	Efficiency (%)
1	2400	0.82	-5.60	27.57
2	2410	0.71	-5.66	27.16
3	2420	0.54	-5.44	28.58
4	2430	0.14	-5.39	28.91
5	2440	-0.19	-5.62	27.41
6	2450	-0.1	-5.46	28.42
7	2460	-0.09	-5.28	29.67
8	2470	-0.21	-5.57	27.71
9	2480	0.15	-5.45	28.48
10	2490	0.66	-5.27	29.7
11	2500	0.95	-5.54	27.91