

APPENDIX B EUT TEST POSITION PHOTOS

Liquid depth $\geq 15\text{cm}$



Handheld Mode:

Test Position_Back (0mm)



Test Position_Back Antenna Fold (0mm)



Test Position_Front (0mm)

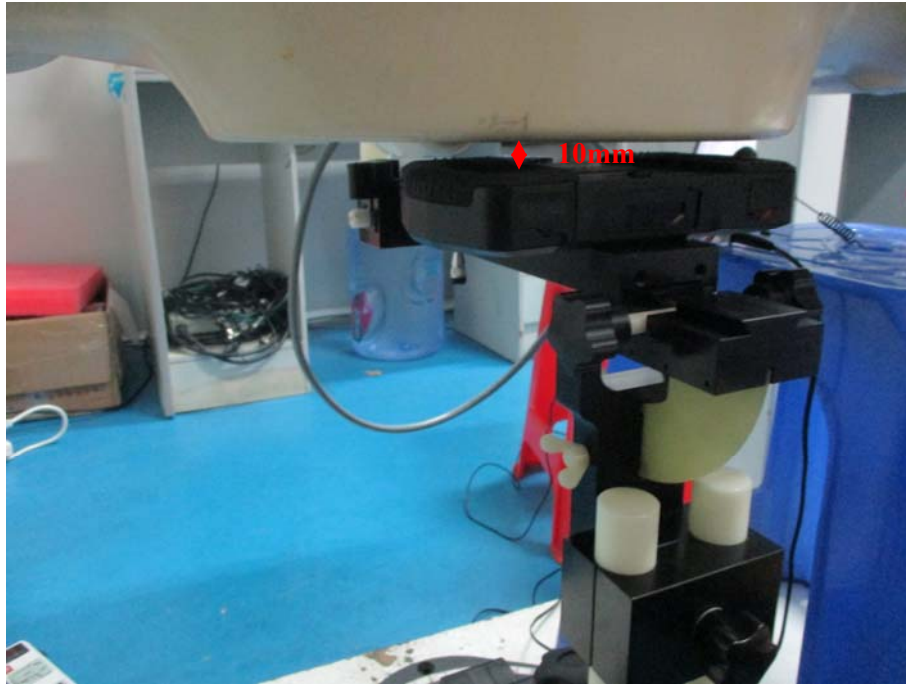


Test Position_Top (0mm)



Close to Body Mode:

Test Position_Back (10mm)



Test Position_Back Antenna Fold (10mm)



Test Position_Front (10mm)



Test Position_Top (10mm)

