

75x50mm

True Wireless Earbuds

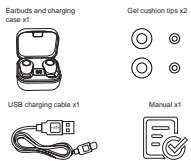
Model: Z1TW32

PRODUCT GUIDE

FCC ID: ZAKI8-TWSEARBUDS

Ver.01

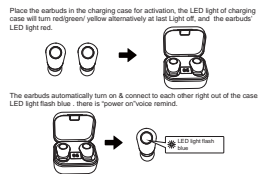
what's in box



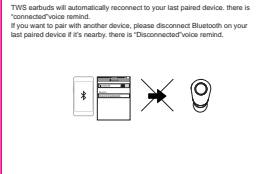
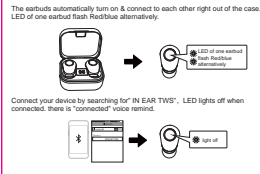
Specification

Bluetooth version: V5.0
 Pairing name: IN EAR TWS
 Speaker diameter: 6mm
 Impedance: 16Ω ±1, 15% at 1kHz
 Frequency range: 20Hz - 20kHz
 Sensitivity: 90±3dB @1mw 1kHz
 Microphone_Sensitivity: -42 ±3dB at 1mw 1kHz
 Operating range: 10m
 Battery capacity of earbuds: 50mAh
 Battery capacity of charging box: 300mAh
 Working hour: 4 hours per full charge
 Charging time: 1.5 hrs
 Bluetooth profiles: HFP, A2DP, HSP, AVRCP
 Warning: Risk of fire, burns and explosion. Do not open, crush, heat above 45°C or incinerate.
 Rechargeable lithium battery: 602030 30mAh 3.7V 1.11Wh
 SHENZHEN ZEPPOWER TECHNOLOGY CO., LTD
 501515 3/F, Ginate 01, B69W
 Shenzhen Keping Tai Technology Co., Ltd
 Red wire (+) Black wire (-)
 made in china X0000.XX.XX

Powering on/off



Bluetooth pairing



Play music



Voice assistant: Press and hold 1s on either earbuds MFB button then release to activate voice assistant

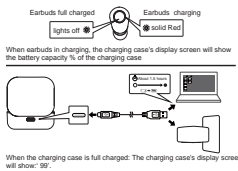


Phone call

1x press either side : answer/hang up, press and hold 1s either side, reject incoming call.



Charging



FCC Statement

This equipment has been tested and found to comply with the limits for a Class B digital device, pursuant to Part 15 of the FCC Rules, these limits are designed to provide reasonable protection against harmful interference in a residential installation. This equipment generates uses and can radiate radio frequency energy and, if not installed and used in accordance with the instructions, may cause harmful interference to radio communications. However, there is no guarantee that interference will not occur in a particular installation. If this equipment does cause harmful interference to radio or television reception, which can be determined by turning the equipment off and on, the user is encouraged to try to correct the interference by one or more of the following measures:

- Reorient or relocate the receiving antenna.
- Increase the separation between the equipment and receiver.
- Connect the equipment into an outlet on a circuit different from that to which the receiver is connected.
- Consult the dealer or an experienced radio/TV technician for help.

This device complies with part 15 of the FCC Rules. Operation is subject to the following two conditions:
 (1) This device may not cause harmful interference, and (2) this device must accept any interference received, including interference that may cause undesired operation. Changes or modifications not expressly approved by the party responsible for compliance could void the user's authority to operate the equipment.
 Warning:
 Changes or modifications to this unit not expressly approved by the party responsible for compliance could void the user's authority to operate the equipment

Shooting and Common Situations

Earbuds cannot power on
 Battery drain, please charge the device for 30 minutes, and then powering on.
Smart phone cannot search Bluetooth Earbuds
 1. Make sure the Earbuds is in pairing mode (red/blue LED flashing alternately)
 2. Delete pairing list in smart phone and searching Earbuds again.
 3. If it still cannot be found, please restart smart phone and Earbuds again.
Earbuds will be disconnected from time to time
 1. The battery drain.
 2. The Earbuds is beyond the communication range (10m)
No sound on talking mode
 1. Confirmed the Earbuds connected to smart phone mode on talking.
No sound with music playing
 1. Try to volume up Earbuds or smart phone.
 2. Earbuds disconnected with smart phone, please reconnect again.
Cannot charge for Earbuds
 1. Make sure the earbuds placed well in the charging case and the charging case LED flash slowly red/green/ yellow
 2. make sure LED lights red.
 3. Check if the charging case is drain up.
 4. Charge the charging case.

This device complies with part 15 of the FCC Rules. Operation is subject to the following two conditions: (1) this device may not cause harmful interference, and (2) this device must accept any interference received, including interference that may cause undesired operation.

Any changes or modifications not expressly approved by the party responsible for compliance could void the user's authority to operate the equipment.

NOTE: This equipment has been tested and found to comply with the limits for a Class B digital device, pursuant to Part 15 of the FCC Rules. These limits are designed to provide reasonable protection against harmful interference in a residential installation. This equipment generates, uses and can radiate radio frequency energy and, if not installed and used in accordance with the instructions, may cause harmful interference to radio communications.

However, there is no guarantee that interference will not occur in a particular installation.

If this equipment does cause harmful interference to radio or television reception, which can be determined by turning the equipment off and on, the user is encouraged to try to correct the interference by one or more of the following measures:

- Reorient or relocate the receiving antenna.
- Increase the separation between the equipment and receiver.
- Connect the equipment into an outlet on a circuit different from that to which the receiver is connected.
- Consult the dealer or an experienced radio/TV technician for help.

The device has been evaluated to meet general RF exposure requirement. The device can be used in portable exposure condition without restriction