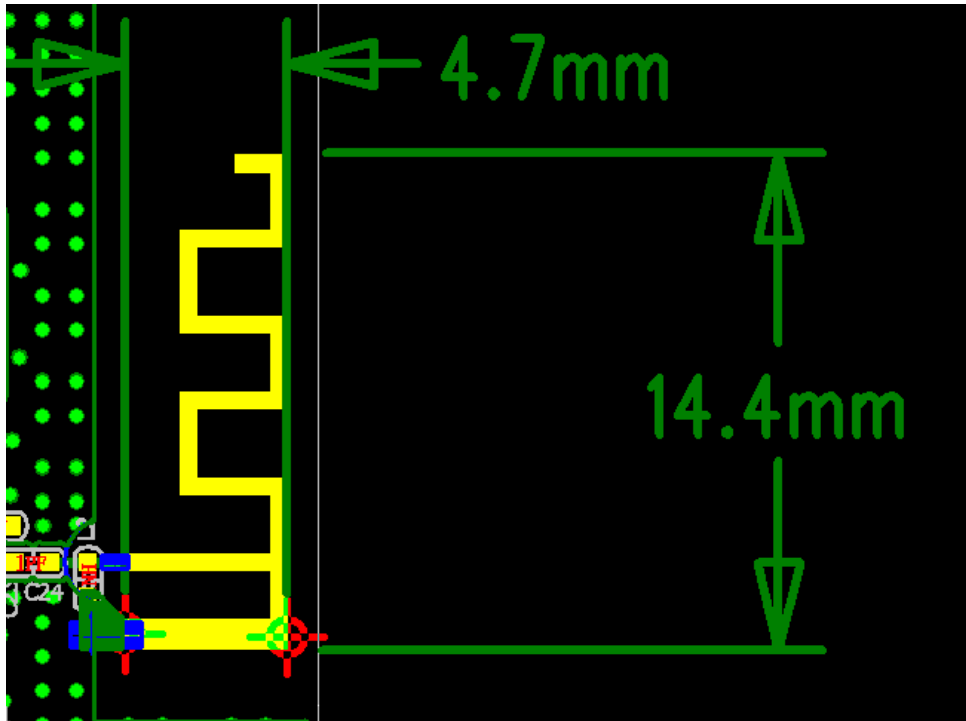


Product specification

- 1.Type of antenna
(Antenna module on the system board)

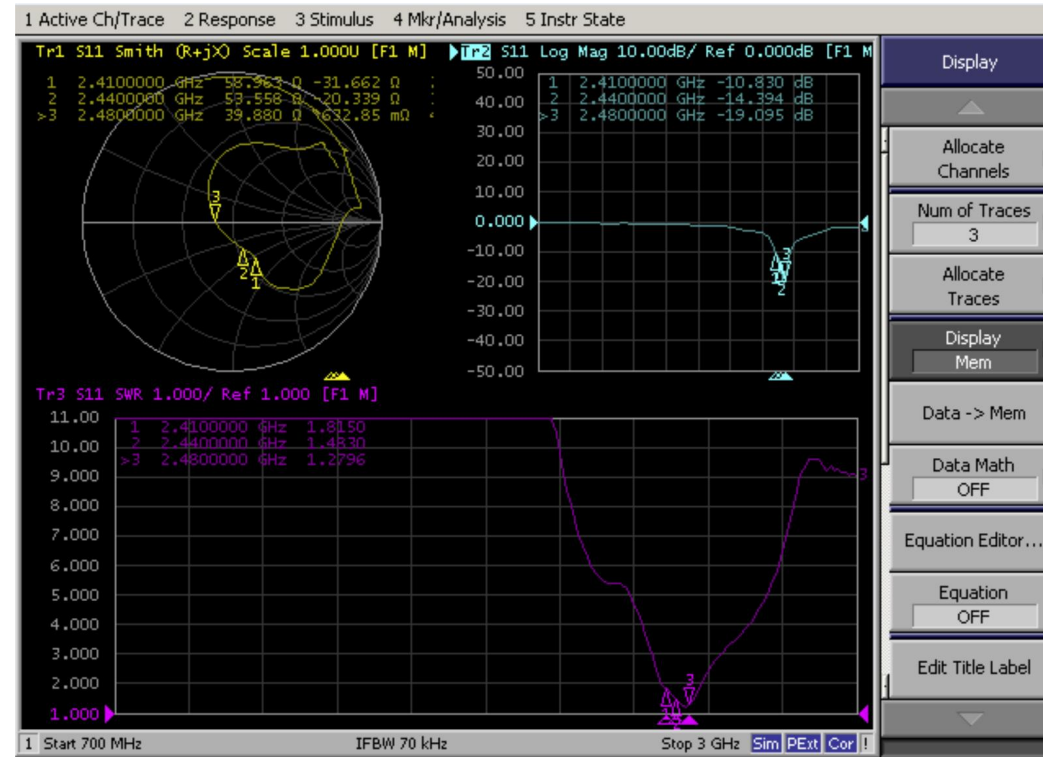


2.Electrical Characteristics

No.	Item	Specifications
1	Frequenc Range	2400 ~ 2500MHz
2	Band Width	100MHz typ.
3	Peak gain	-3dBi
4	V.S.W.R	≤ 2.0
5	Polarization	Linear
6	Azimuth Beam width	Omni-directional
7	Impedance	50 Ω

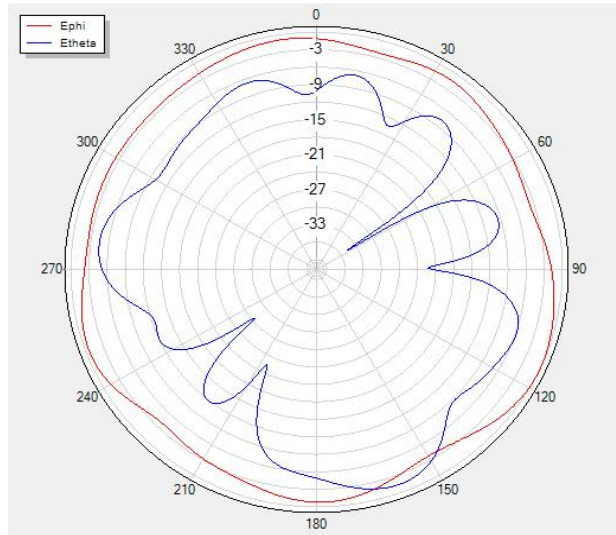
All the technical data and information contained herein are subject to change without prior notice

3. Return Loss

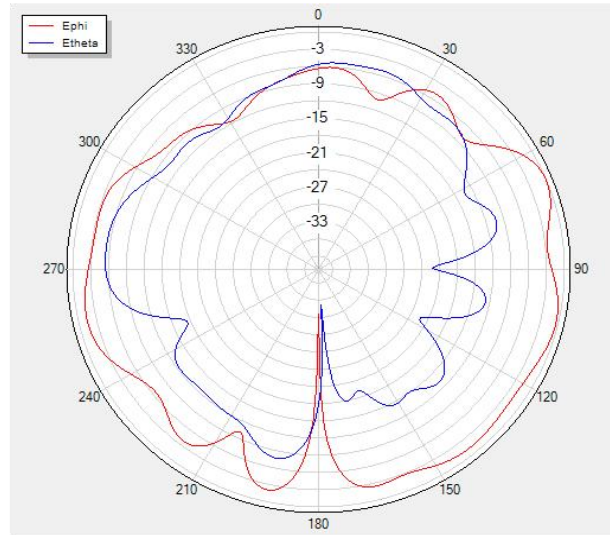


4. Radiation Pattern

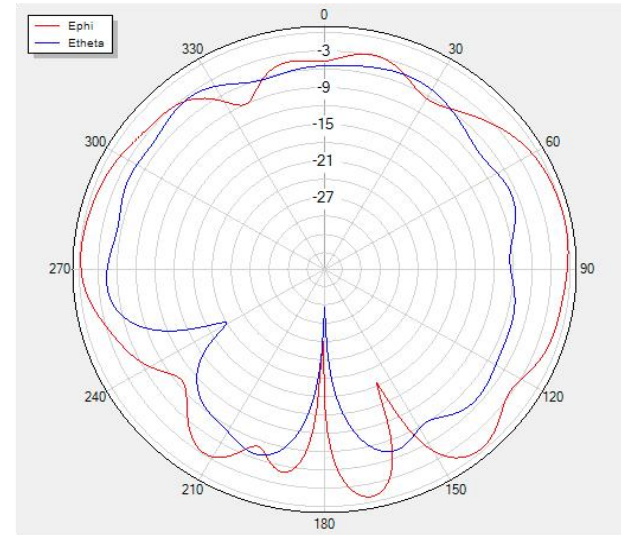
Theta=90 freq=2440MHz



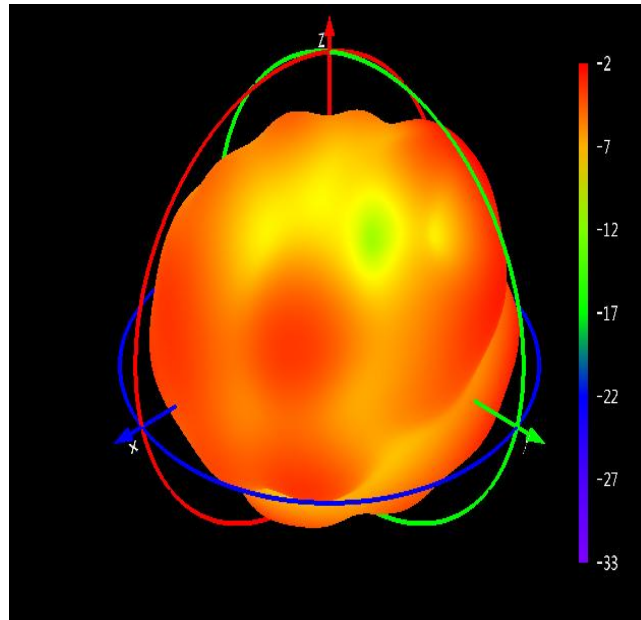
Phi=90 freq=2440MHz



Phi=0 freq=2440MHz



3D Radiation Pattern



Frequency (MHz)	2400	2450	2500
Avg. Gain (dBi)	-6.82	-5.3	-3
Efficiency (%)	20.81	29.52	50.16