

21TW22 75x50mm

True Wireless Earbuds

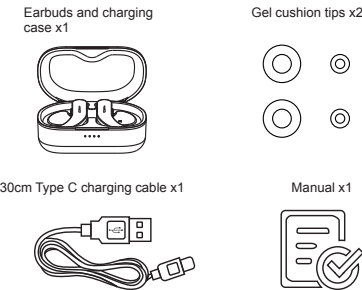
Model: 17LY86BK

PRODUCT GUIDE

FCC ID: 2AKI8-SPORTTWS

Ver.01

what's in box

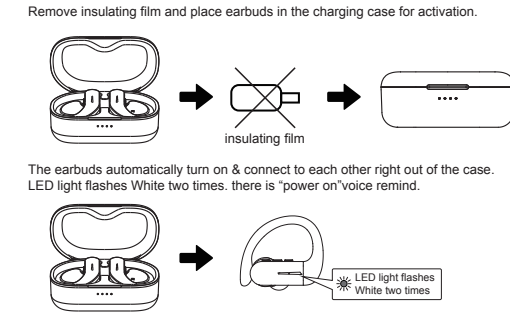


Specification

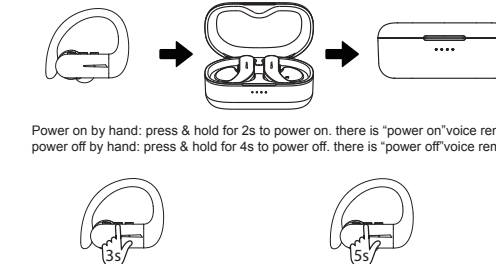
Bluetooth version: V5.0
 Pairing name: TWS EARBUDS
 Speaker diameter: 13mm
 Impedance: 32±15%Ω
 Frequency range: 20Hz~20KHz
 Sensitivity: 96± 3dB @1mw 1kHz
 Microphone_Sensitivity: -42 ± 3dB
 Operating range: 10m
 Battery capacity of earbuds: 60mAh
 Battery capacity of charging box: 1200mAh
 Working hour: 10 hours per full charge
 Charging time: about 1.5 hrs
 Bluetooth profile:HFP A2DP HSP AVRCP

Warning: Risk of fire, burns and explosion. Do not open, crush, heat above 45°C or incinerate.

Powering on/off

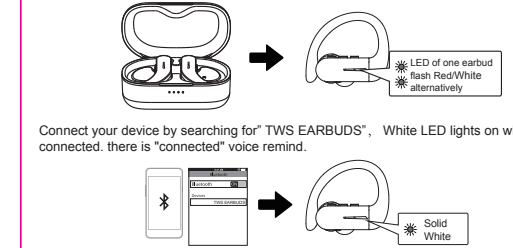


Place earbuds in the charging case , earbuds will power off automatically, LED light Red.

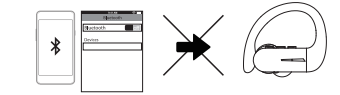


Bluetooth pairing

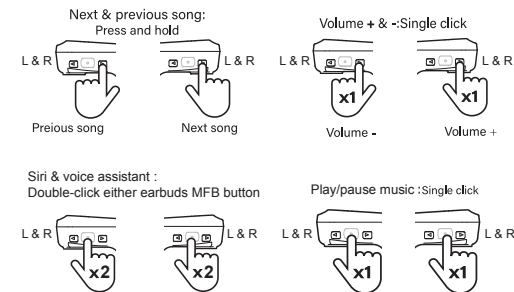
The earbuds automatically turn on & connect to each other right out of the case. LED of one earbud flash Red/White alternatively, there is "pairing" voice remind.



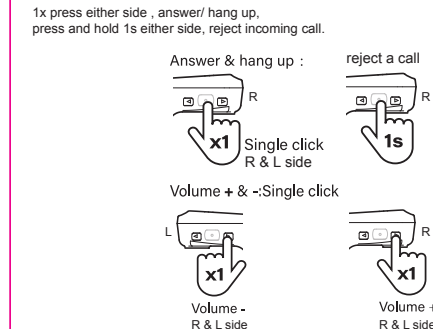
TWS earbuds will automatically reconnect to your last paired device. there is "connected"voice remind.
 If you want to pair with another device, please disconnect Bluetooth on your last paired device if it's nearby, there is "pairing"voice remind.



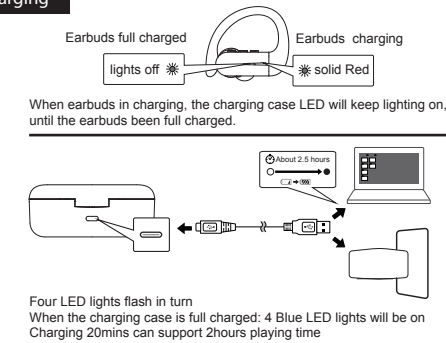
Play music



Phone call



Charging



FCC Statement

This equipment has been tested and found to comply with the limits for a Class B digital device, pursuant to Part 15 of the FCC Rules, these limits are designed to provide reasonable protection against harmful interference in a residential installation, this equipment generates uses and can radiate radio frequency energy and, if not installed and used in accordance with the instructions. May cause harmful interference to radio or television reception, which can be determined by turning the equipment off and on, the user is encouraged to try to correct the interference by one or more of the following measures:
 -- Reorient or relocate the receiving antenna.
 -- Increase the separation between the equipment and receiver.
 -- Connect the equipment into an outlet on a circuit different from that to which the receiver is connected.
 --Consult the dealer or an experienced radio/TV technician for help.

This device complies with part 15 of the FCC Rules. Operation is subject to the following two conditions:
 (1) This device may not cause harmful interference, and (2) this device must accept any interference received, including interference that may cause undesired operation. Changes or modifications not expressly approved by the party responsible for compliance could void the user's authority to operate the equipment.

Warning:
 Changes or modifications to this unit not expressly approved by the party responsible for compliance could void the user's authority to operate the equipment

Produced for Walmart inc.
 Bentovile. AR72716
 1-888-516-2630
 Website: <https://www.walmart.com/>

Trouble Shooting and Common Situations

Earbuds cannot power on
 Battery drain, please charge the device for 30 minutes, and then powering on.
Smart phone cannot search the 'TWS EARBUDS'
 1. Make sure the Earbuds is in pairing mode (red and white LED flashing alternately)
 2. Delete pairing list in smart phone and searching Earbuds again.
 3. If it still cannot be found, please restart smart phone and Earbuds again.
Earbuds will be disconnected from time to time
 1. The battery drain.
 2. The Earbuds is beyond the communication range(10m)
No sound on talking mode
 1. Confirmed the Earbuds connected to smart phone mode on talking.
 2. Try to volume up Earbuds or smart phone.
No sound with music playing
 1. Try to volume up Earbuds or smart phone.
 2. Earbuds disconnected with smart phone, please reconnected again.

Cannot charge for Earbuds
 1.Make sure the insulating film on the earbuds have been removed.
 2. Make sure the earbuds placed well in the charging case.
 3. make sure LED lights red.
 4. Check if the charging case is drain up.
 5. Charge the charging case.