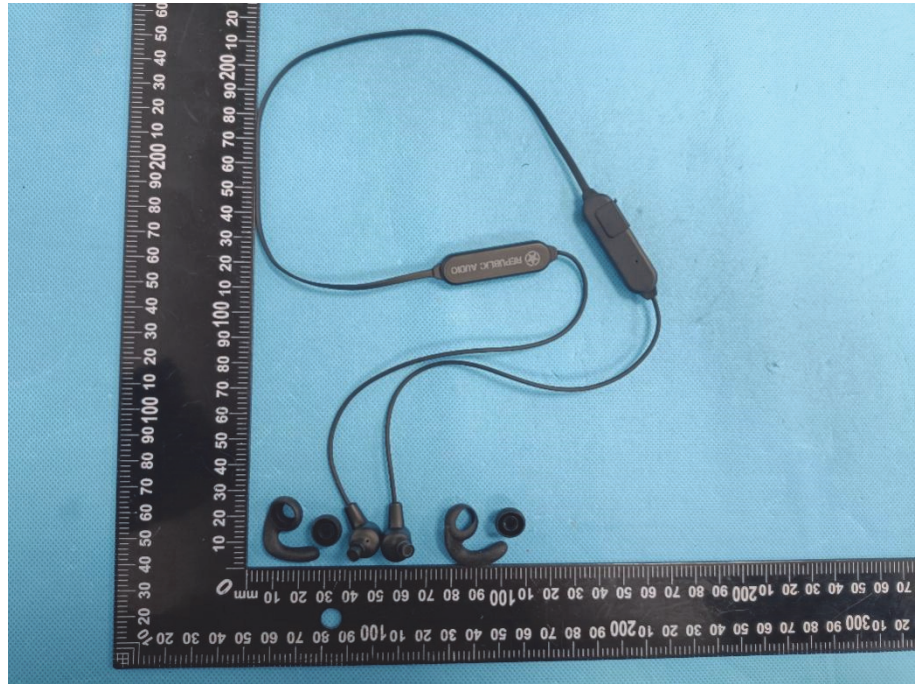
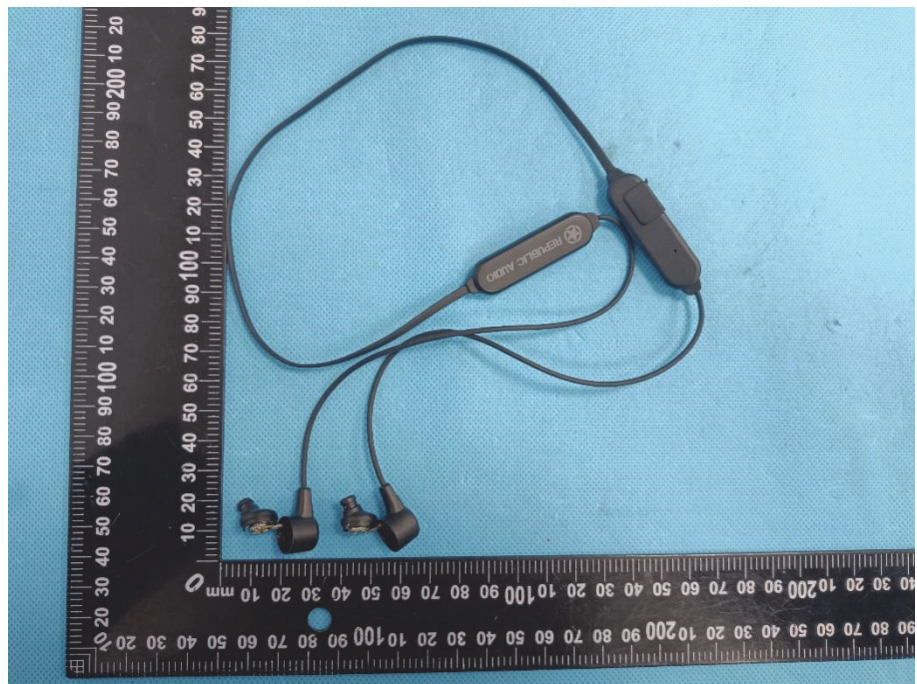


EXHIBIT 3 - EUT INTERNAL PHOTOGRAPHS

EUT Housing and Board View 1



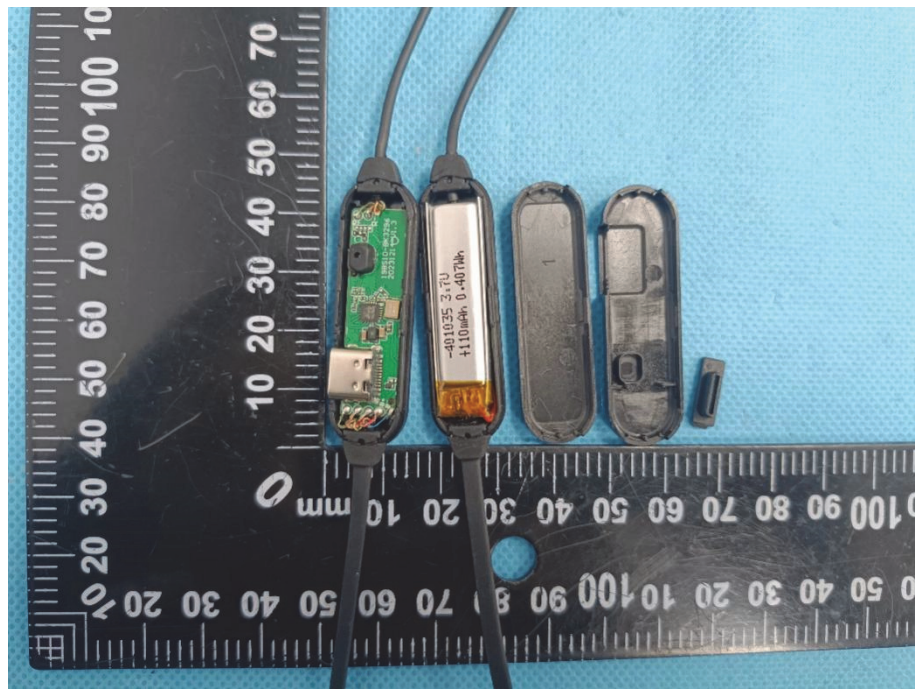
EUT Housing and Board View 2

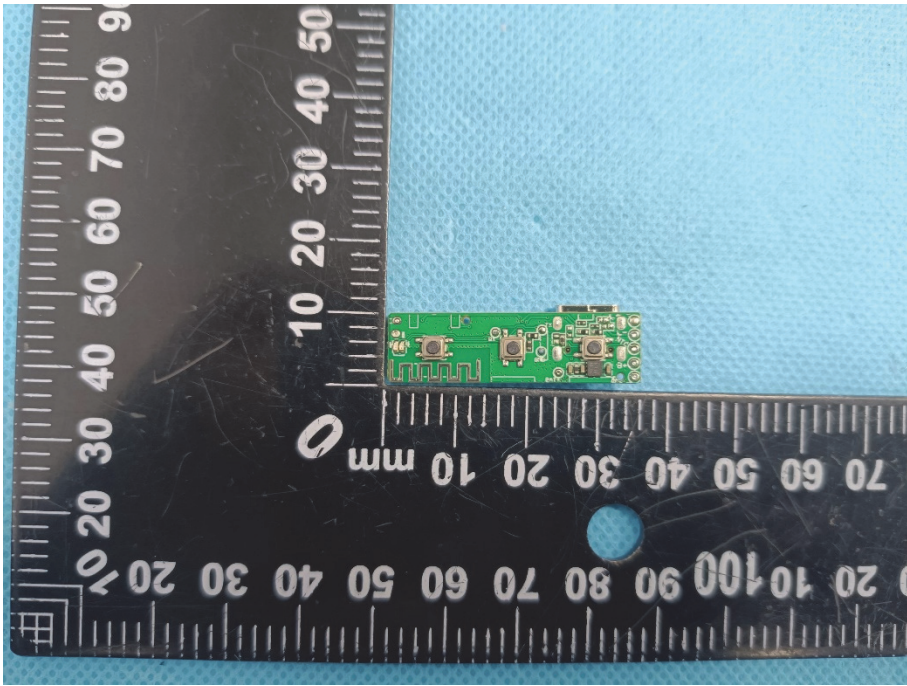
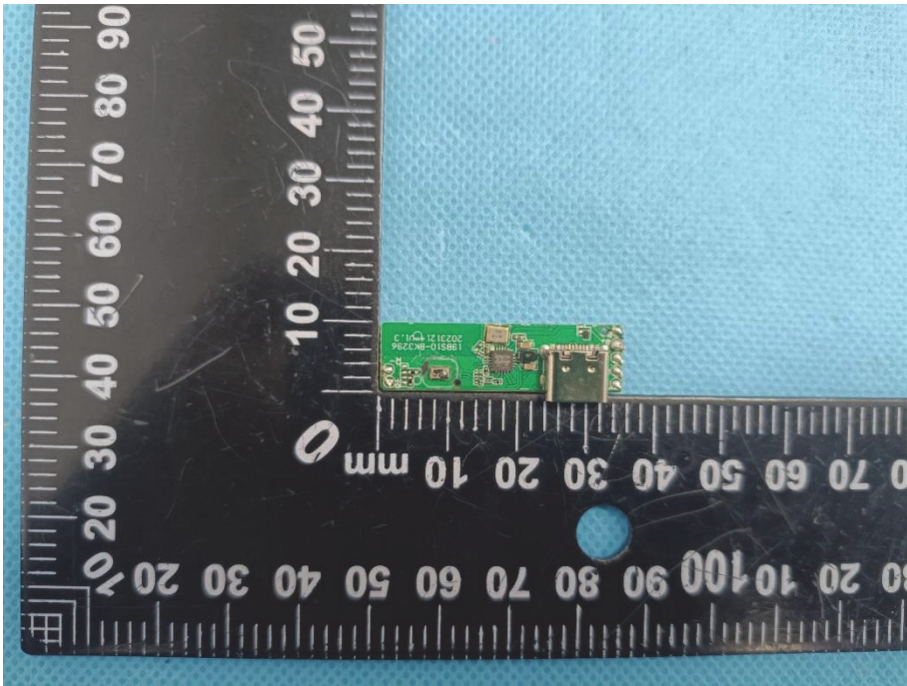


EUT Housing and Board View 3



EUT Housing and Board View 4



<p>Solder Board-Component View 1</p>	 A photograph of a small green printed circuit board (PCB) component with various electronic components and solder joints. The component is placed on a black L-shaped ruler with white markings in millimeters. The ruler is positioned against a light blue textured background. The component is oriented horizontally, with its longer side parallel to the ruler's edge. The ruler shows markings from 0 to 100 mm on the horizontal axis and 0 to 90 mm on the vertical axis.
<p>Solder Board-Component View 2</p>	 A photograph of the same small green PCB component as in View 1, but from a different perspective. The component is placed on the same black L-shaped ruler with white markings. The ruler is positioned against the same light blue textured background. The component is oriented horizontally, with its longer side parallel to the ruler's edge. The ruler shows markings from 0 to 100 mm on the horizontal axis and 0 to 90 mm on the vertical axis. The component's orientation is different from View 1, showing a different side of the board.

