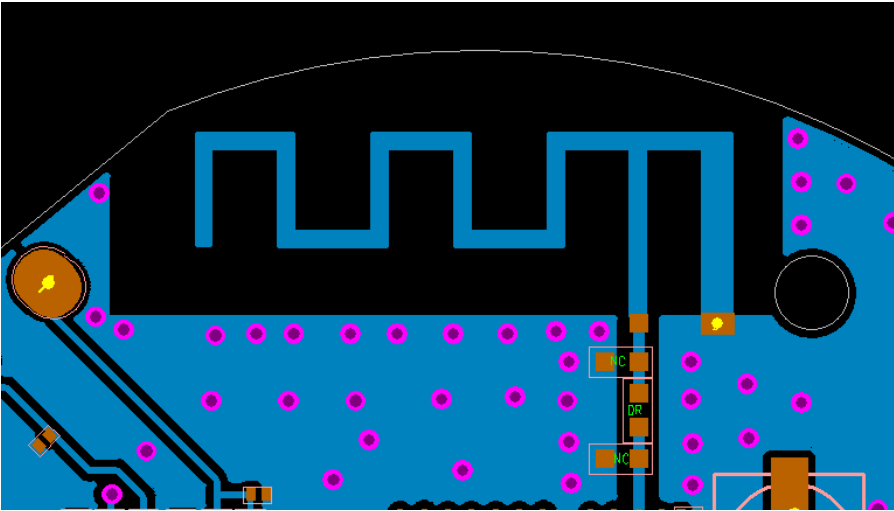


# Product specification

## 1.Type of antenna

(Antenna module on the system board)



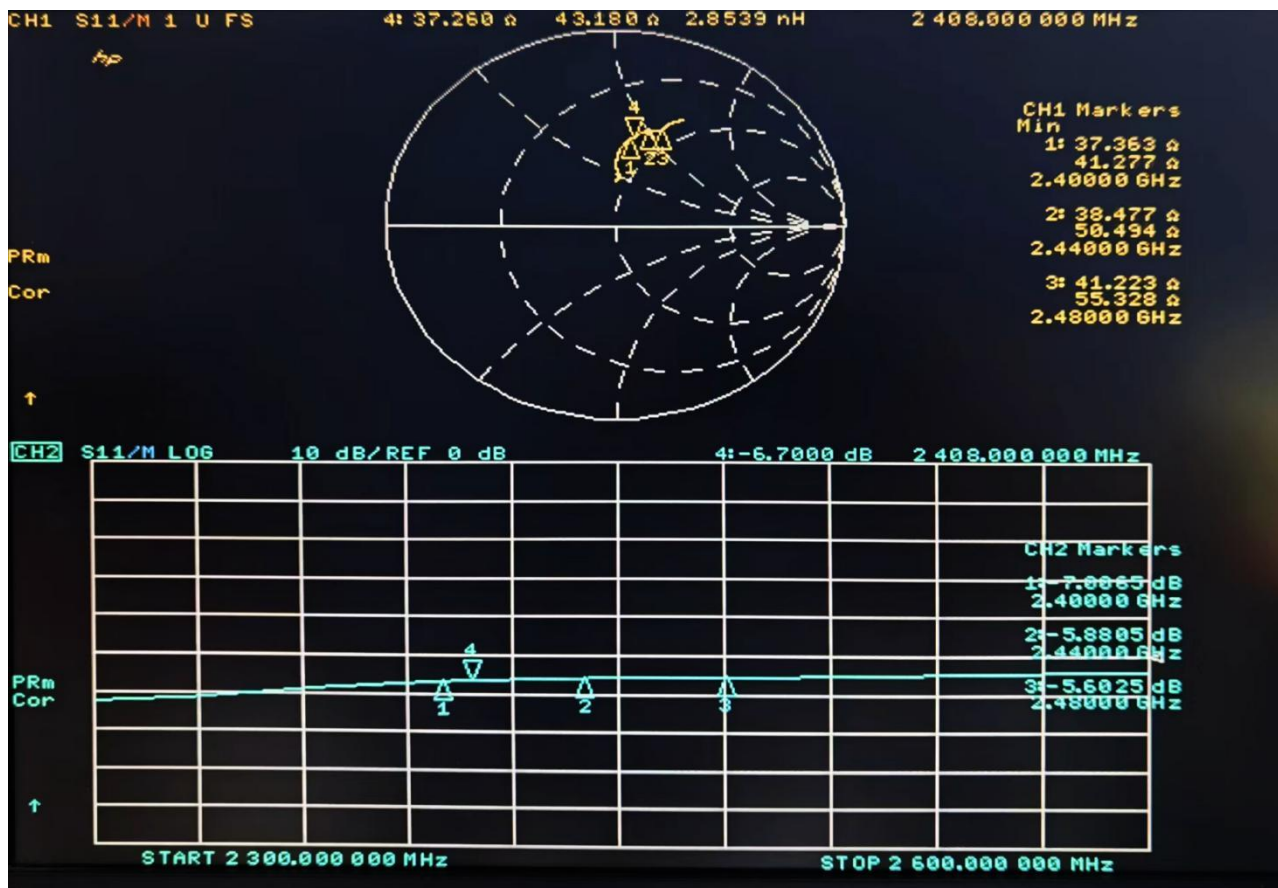
(这图片是实物的图片)

## 2.Electrical Characteristics

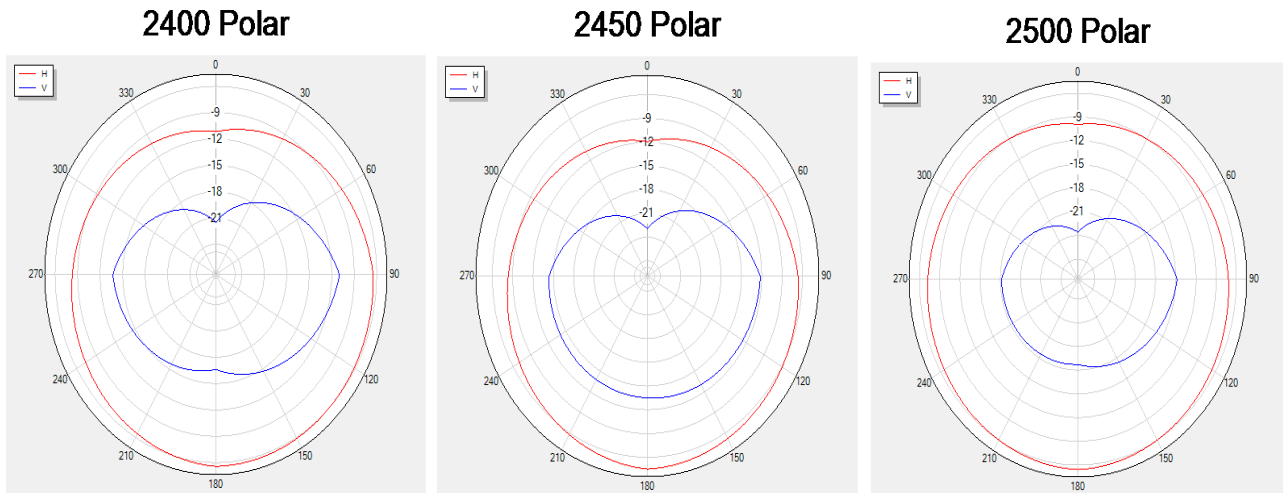
No.	Item	Specifications
1	Frequenc Range	2400 ~ 2500MHz
2	Band Width	100MHz typ.
3	Peak Gain	-0.14 dBi
4	V.S.W.R	$\leq 2.0$
5	Polarization	Linear
6	Azimuth Beam width	Omni-directional
7	Impedance	50 $\Omega$

All the technical data and information contained herein are subject to change without prior notice

### 3.Return Loss



## 4. Radiation Pattern



Frequency (MHz)	2400	2450	2500
Efficiency	-5.25	-5.7	-6.56
Gain	-0.14	-1.37	-3.32
Percentage	29.88%	26.92%	22.07%

Standard	Band	Chan	Freq	Type	MAX	TRP/TIS
BT	BLUETOOTH	1	2403	Trp	-0.11	-3.14
BT	BLUETOOTH	37	2439	Trp	-0.22	-3.8
BT	BLUETOOTH	78	2480	Trp	0.07	-4.48
BT	BLUETOOTH	1	2403	Tis_Rssi	-85.81	-79.94
BT	BLUETOOTH	37	2439	Tis_Rssi	-85.77	-78.88
BT	BLUETOOTH	78	2480	Tis_Rssi	-86.2	-77.78