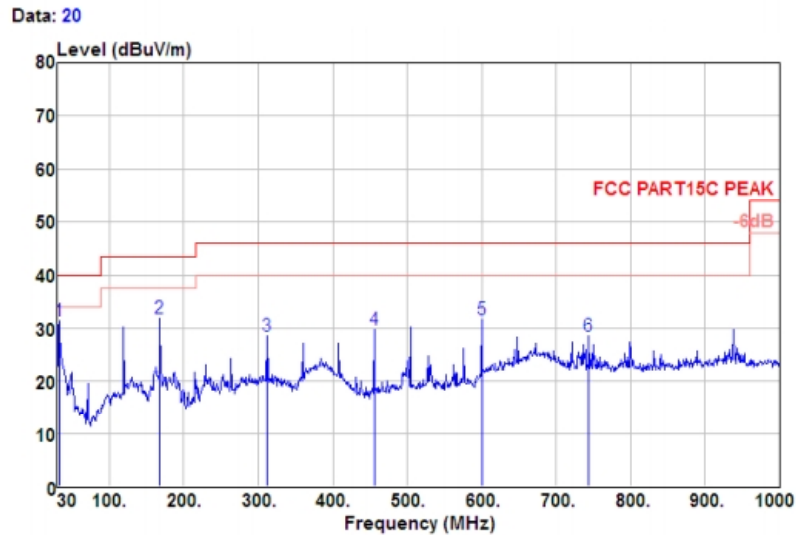


Test mode:	Transmitting mode	Antenna Polarity:	Vertical
Temp.:	27°C	Humidity:	55%



Freq MHz	Reading level dBuV	Antenna factor dB/m	Cable loss dB	Preamp factor dB	level dBuV	Limit level dBuV/m	Over limit dB	Remark
32.910	49.63	13.32	1.04	32.53	31.46	40.00	-8.54	Peak
167.740	48.42	13.43	2.53	32.52	31.86	43.50	-11.64	Peak
312.270	44.50	13.13	3.52	32.51	28.64	46.00	-17.36	Peak
455.830	42.14	15.75	4.34	32.52	29.71	46.00	-16.29	Peak
600.360	40.97	18.40	5.02	32.69	31.70	46.00	-14.30	Peak
743.920	35.51	20.18	5.58	32.72	28.55	46.00	-17.45	Peak

■ Above 1GHz

Test channel:	Lowest
---------------	--------

Peak value:

Frequency (MHz)	Read Level (dBuV)	Antenna Factor (dB/m)	Cable Loss (dB)	Preamp Factor (dB)	Level (dBuV/m)	Limit Line (dBuV/m)	Over Limit (dB)	Polarization
4804.00	41.31	31.23	5.45	36.27	41.72	74.00	-32.28	Vertical
7206.00	39.46	35.87	6.94	34.25	48.02	74.00	-25.98	Vertical
9608.00	41.18	37.79	7.77	34.13	52.61	74.00	-21.39	Vertical
12010.00	*					74.00	*	Vertical
14412.00	*					74.00	*	Vertical
4804.00	43.22	31.23	5.45	36.27	43.63	74.00	-30.37	Horizontal
7206.00	39.93	35.87	6.94	34.25	48.49	74.00	-25.51	Horizontal
9608.00	39.98	37.79	7.77	34.13	51.41	74.00	-22.59	Horizontal
12010.00	*					74.00	*	Horizontal
14412.00	*					74.00	*	Horizontal

Average value:

Frequency (MHz)	Read Level (dBuV)	Antenna Factor (dB/m)	Cable Loss (dB)	Preamp Factor (dB)	Level (dBuV/m)	Limit Line (dBuV/m)	Over Limit (dB)	Polarization
4804.00	30.56	31.23	5.45	36.27	30.97	54.00	-23.03	Vertical
7206.00	28.75	35.87	6.94	34.25	37.31	54.00	-16.69	Vertical
9608.00	30.86	37.79	7.77	34.13	42.29	54.00	-11.71	Vertical
12010.00	*					54.00	*	Vertical
14412.00	*					54.00	*	Vertical
4804.00	33.12	31.23	5.45	36.27	33.53	54.00	-20.47	Horizontal
7206.00	28.40	35.87	6.94	34.25	36.96	54.00	-17.04	Horizontal
9608.00	28.43	37.79	7.77	34.13	39.86	54.00	-14.14	Horizontal
12010.00	*					54.00	*	Horizontal
14412.00	*					54.00	*	Horizontal

Remark:

1. Final Level = Receiver Read level + Antenna Factor + Cable Loss – Preamplifier Factor
2. “*”, means this data is the too weak instrument of signal is unable to test.
3. The emission levels of other frequencies are very lower than the limit and not show in test report.

Test channel:	Middle
---------------	--------

Peak value:

Frequency (MHz)	Read Level (dBuV)	Antenna Factor (dB/m)	Cable Loss (dB)	Preamp Factor (dB)	Level (dBuV/m)	Limit Line (dBuV/m)	Over Limit (dB)	Polarization
4882.00	42.39	31.42	5.40	36.24	42.97	74.00	-31.03	Vertical
7323.00	39.44	36.14	7.28	34.36	48.50	74.00	-25.50	Vertical
9764.00	39.38	38.08	7.98	34.20	51.24	74.00	-22.76	Vertical
12205.00	*					74.00	*	Vertical
14646.00	*					74.00	*	Vertical
4882.00	43.50	31.42	5.40	36.24	44.08	74.00	-29.92	Horizontal
7323.00	39.48	36.14	7.28	34.36	48.54	74.00	-25.46	Horizontal
9764.00	39.41	38.08	7.98	34.20	51.27	74.00	-22.73	Horizontal
12205.00	*					74.00	*	Horizontal
14646.00	*					74.00	*	Horizontal

Average value:

Frequency (MHz)	Read Level (dBuV)	Antenna Factor (dB/m)	Cable Loss (dB)	Preamp Factor (dB)	Level (dBuV/m)	Limit Line (dBuV/m)	Over Limit (dB)	Polarization
4882.00	31.45	31.42	5.40	36.24	32.03	54.00	-21.97	Vertical
7323.00	28.57	36.14	7.28	34.36	37.63	54.00	-16.37	Vertical
9764.00	27.62	38.08	7.98	34.20	39.48	54.00	-14.52	Vertical
12205.00	*					54.00	*	Vertical
14646.00	*					54.00	*	Vertical
4882.00	32.74	31.42	5.40	36.24	33.32	54.00	-20.68	Horizontal
7323.00	28.46	36.14	7.28	34.36	37.52	54.00	-16.48	Horizontal
9764.00	29.13	38.08	7.98	34.20	40.99	54.00	-13.01	Horizontal
12205.00	*					54.00	*	Horizontal
14646.00	*					54.00	*	Horizontal

Remark:

1. *Final Level = Receiver Read level + Antenna Factor + Cable Loss – Preamplifier Factor*
2. *“*” means this data is the too weak instrument of signal is unable to test.*
3. *The emission levels of other frequencies are very lower than the limit and not show in test report.*

Test channel:	Highest
---------------	---------

Peak value:

Frequency (MHz)	Read Level (dBuV)	Antenna Factor (dB/m)	Cable Loss (dB)	Preamp Factor (dB)	Level (dBuV/m)	Limit Line (dBuV/m)	Over Limit (dB)	Polarization
4960.00	43.98	31.60	5.36	36.21	44.73	74.00	-29.27	Vertical
7440.00	38.84	36.41	7.44	34.47	48.22	74.00	-25.78	Vertical
9920.00	39.56	38.36	8.05	34.26	51.71	74.00	-22.29	Vertical
12400.00	*					74.00	*	Vertical
14880.00	*					74.00	*	Vertical
4960.00	42.56	31.60	5.36	36.21	43.31	74.00	-30.69	Horizontal
7440.00	39.72	36.41	7.44	34.47	49.10	74.00	-24.90	Horizontal
9920.00	39.78	38.36	8.05	34.26	51.93	74.00	-22.07	Horizontal
12400.00	*					74.00	*	Horizontal
14880.00	*					74.00	*	Horizontal

Average value:

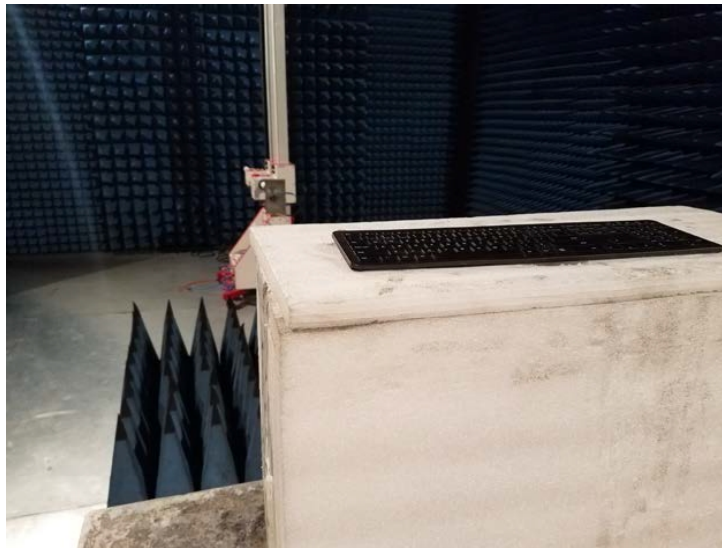
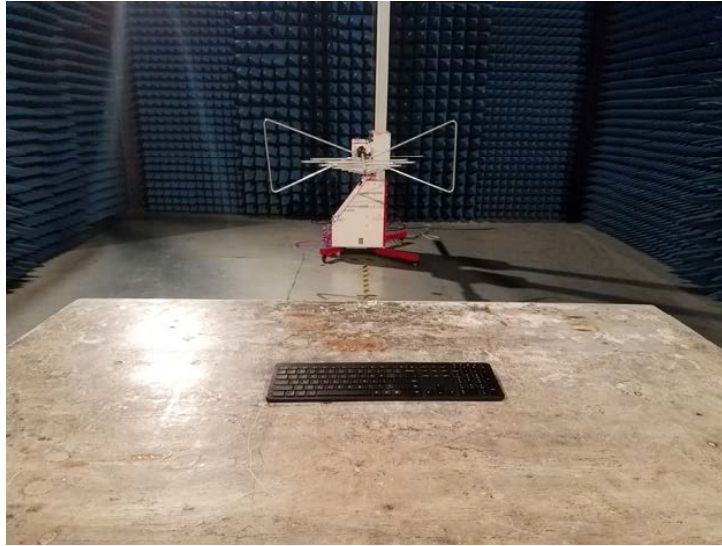
Frequency (MHz)	Read Level (dBuV)	Antenna Factor (dB/m)	Cable Loss (dB)	Preamp Factor (dB)	Level (dBuV/m)	Limit Line (dBuV/m)	Over Limit (dB)	Polarization
4960.00	32.48	31.60	5.36	36.21	33.23	54.00	-20.77	Vertical
7440.00	27.50	36.41	7.44	34.47	36.88	54.00	-17.12	Vertical
9920.00	27.84	38.36	8.05	34.26	39.99	54.00	-14.01	Vertical
12400.00	*					54.00	*	Vertical
14880.00	*					54.00	*	Vertical
4960.00	31.58	31.60	5.36	36.21	32.33	54.00	-21.67	Horizontal
7440.00	28.47	36.41	7.44	34.47	37.85	54.00	-16.15	Horizontal
9920.00	28.72	38.36	8.05	34.26	40.87	54.00	-13.13	Horizontal
12400.00	*					54.00	*	Horizontal
14880.00	*					54.00	*	Horizontal

Remark:

1. Final Level = Receiver Read level + Antenna Factor + Cable Loss – Preamplifier Factor
2. “*”, means this data is the too weak instrument of signal is unable to test.
3. The emission levels of other frequencies are very lower than the limit and not show in test report.

8 Test Setup Photo

Radiated Emission



9 EUT Constructional Details

Test Model No.: HB197-3-G



Model No.: HB197-2-G



Model No.: HB198-3-G

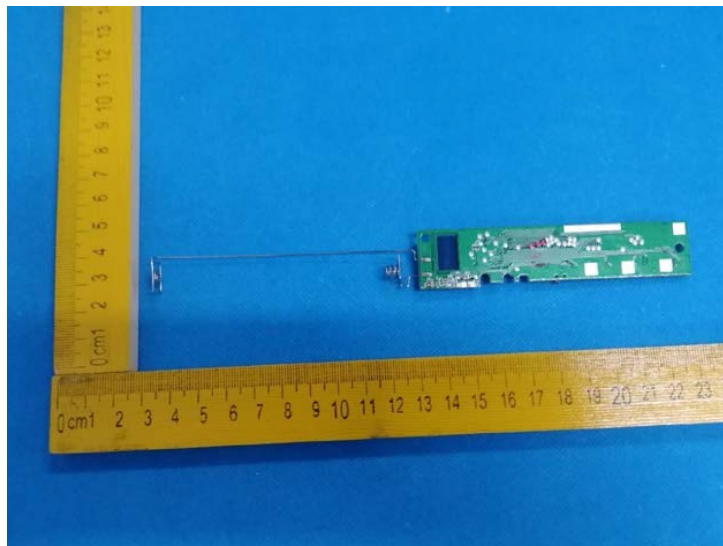


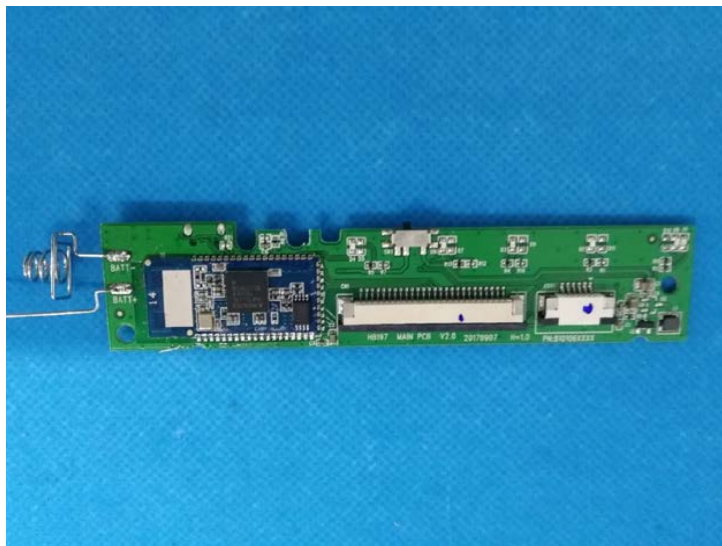
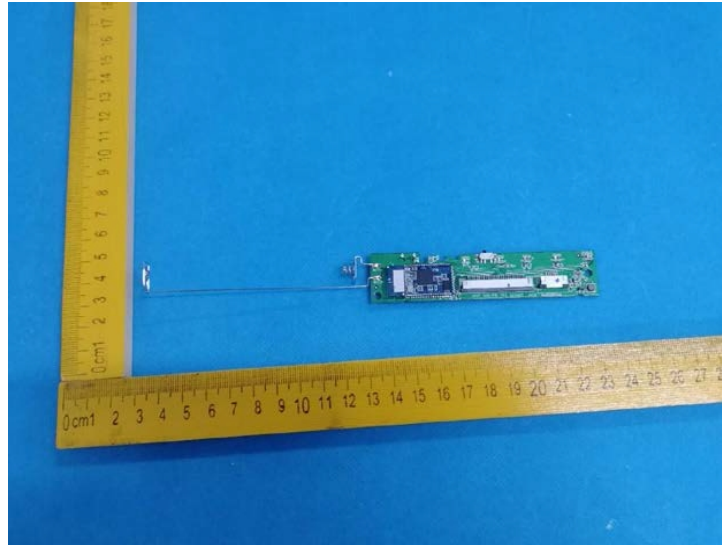
Model No.: HB198-2-G



Test Model No.: HB197-3-G







-----End-----